



46' (14.02m) 2023 Beneteau OCEANIS 46.1 #400  
Clear Lake Shores Texas United States



## OVERVIEW

Manufacturer:	Beneteau		
Engines:	1 Yanmar	Hull Material:	Fiberglass
Engine Model:	4JH80 CR SD	Cruise Speed:	
Engine HP:	80	Max Speed:	
Beam:	14' 9"	Cabins/Heads:	3 / 2
Max Draft:	5' 9"	Fuel Type:	Diesel
Water:	98 G (370.97 L)	Fuel:	53 G (200.63 L)

Call for Price



## Data Sheet

Category: Cruisers	Fuel Type: Diesel	Displacement: 24000 lbs
Subcategory: Sloop	Hull Material: Fiberglass	Dry Weight: 24000 lbs
Condition: New	Hull Finish: Gel Coat	Bow Thruster: Yes
Model Year: 2023	Air Conditioning: Yes	Fuel Tank: 53 gal (200.63 liters)
Beam: 14'9" Max Draft: 5' 9" LOA: 47' 11" (14.61m)	Bridge Clearance: 66' 8"	Fresh Water: 98 gal (370.97 liters)
LWL: 43' 5" Cabins: 3		Holding Tank: 42 gal (158.99 liters)
Sleeps: 8		CE Certified: Yes
Head Room: 6' 7"		Imported: Yes
Heads: 2		Builder: Beneteau France
		Designer: Pascal Conq
		Interior Designer: Nauta
		HIN/IMO: BEYFS400J223
		Stock #: 15438

## Engines/Generators

### Engine 1

Yanmar  
4JH80 CR SD  
Inboard  
80HP  
Fuel: Diesel

## Summary/Description

The world reference in cruising. Oceanis is our range of long-distance, blue water cruisers & for years has set the standard for sailboat design and construction. With a hull that is a marvel in hydrodynamics, Oceanis delivers superior performance while providing stability and safety under sail.

The Oceanis 46.1 offers a true balance between elegance, performance, and comfort. Her stepped hull adds massive amounts of volume below with no compromise to seakeeping abilities. Her deck and cockpit layout make her an easy boat to sail doublehanded, and a large number of custom options and trims ensure she will be tailored to each sailor's expectations and requirements.

NAVAL ARCHITECT: Pascal CONQ

INTERIOR DESIGN: Nauta Design

DECK DESIGN: Nauta Design

## EXTERIOR DESIGN

The Oceanis 46.1 is based on a Finot-Conq plan, keeping the distinctive stepped hull of the 51.1. Apart from her performance at sea and the huge amount of space that set this boat apart, this architecture makes optimal use of the cockpit beam. An incredibly efficient deck plan makes her wonderfully safe and easy to use. Maneuvering is simple when sailing short-handed, thanks to the furling mast, self-tacking jib, and all the halyards and sheets which are brought back to a single winch at each of the helm stations.

## INTERIOR DESIGN

Large hull portholes bring a considerable amount of natural light right into the center of the boat, so that you can truly enjoy the elegant interiors by Nauta Design. A choice of satin light oak or mahogany set the tone and create the interior atmosphere, which can be readily customized.

## EVERY STYLE OF CRUISING

Easy to sail, easy-going and fast, the Oceanis 46.1 can be customized to make her unique, appealing to a wide range of crews. Attention to design details makes life on board a real pleasure and you can sail confidently in the knowledge that she is safe.

## COCKPIT AND RELAXATION

The Oceanis 46.1 has a very spacious cockpit with space for 8 guests around a large table. There are two reclining sun loungers together with drinks holders on either side of the companionway. These can easily be lifted and brought forward onto the fore deck.

## MASTER SUITE

With unparalleled space on a boat this size, the master cabin has a shower room with a separate head, offering comfort worthy of a sailing yacht of much bigger proportions, with a 5'25" x 6'72" island bed.

## SPEED AND SENSATIONS

With a longer mast of 3 additional feet, a sail area increased by 28%, Harken deck fittings, and a deep lead-bulb keel to reduce drag, the First Line version of the Oceanis 46.1 is all set to offer unique cruising sensations.

## Beneteau OCEANIS 46.1 #400 Factory Options

Order #15438

- YANMAR 4JH80 CR SD (80HP) in Lieu of the standard 54 hp
- SHALLOW CAST IRON KEEL (5'9")
- 1 FWD CAB 1T 2 AFT CAB 1T OAK (Light Interior)
- ULTRALEATHER UPHOLSTERY IN SALON, WOODPECKER
- COMFORT TRIM LEVEL

-Cockpit bench extensions + 2 halyard bags below

- Hifi: Fusion + Interior loudspeakers & Waterproof exterior speakers
- Salon & Galley: LED indirect lighting
- Galley: Stainless steel cooker 2 burner oven/grill on gimbal
- Galley: Refrigeration system, 12 V, in top-opening icebox (for storage below 0°C)
- Galley: Compact sink cover Clay with cutting board
- Beige padding upholstery in cabins
- Battery charge display, Navicolor screen (3,5")
- 3 Additional 100 ampères service batteries
- 1 Additional 40 ampères battery charger
- AGM Batteries in lieu of standard
- Mosquito nets on portholes
- Access opening to port and starboard

- UPWIND AND DOWNWIND PACK

- 2 Genoa winches (H50.2 STA)
- German system (Two-way mainsheet at the helm station)
- Polyester bowsprit with integrated anchoring gear and bobstay (for Code 0 and asymmetric spinnaker)
- Asymmetrical spinnaker rigging / Code 0 rigging
- 2 Additional halyard clutches
- Genoa sheet tracks on side decks
- Dacron genoa on furler (to replace the standard self-tacking jib)

- LARGE CONSOLES OFFSHORE PACK R

- XXL consoles to port and starboard
- 1 Multifunction touchscreen Axiom+ 9" on each console
- 2 i70s Displays (1 to port, 1 to starboard)
- Electric engine controls on starboard console
- Wind Sensor (Windvane, Anemometer)
- Sensor (Log, Speedometer, Temperature)

- P70S autopilot + Control on the port console
- S100 Wireless autopilot remote control
- Fixed Ray73 VHF at the chart table
- Protective cover (Cadet Grey): Steering wheel & console
- Windlass control with chain counter on starboard console
- Bow thruster control on starboard console

- H50 2 STAEH ELECTRIC GENOA WINCHES
- AFT FAIRLEADS S/S
- ELECTRIC CONTROL WINDLASS
- MOORING ANCHORING KIT
- MAINSAIL ARCH
- FIXED SWIMMING LADDER
- ELECTRICALLY OPENING PLATFORM
- POLYESTER-WOOD COCKPIT TABLE
- DOLCE 51 COCKPIT CUSHIONS
- DOLCE 51 SUNBATHING MATTRESS
- BLACK COMPOSITE STEERING WHEEL
- TUNNEL BOW THRUSTER
- ELECTRIC DECK WASH PUMP
- GENERATOR 8.5KVA
- 3 STAINLESS STEEL BURNERS OVEN
- GAS PLANCHA IN COCKPIT (Grill)
- 115V MICROWAVE OVEN
- 36,000 BTU AIR CONDITIONING
- INNER SPRING MATTRESS IN OWNER'S CABIN
- ELECTRIC TOILET QUIET FLUSH PORT FWD
- ELECTRIC TOILET QUIET FLUSH STB AFT
- EXTRA FUEL TANK (200 LITERS)
- 3 FOLDING BLADE PROPELLER
- PEARL GREY HULL (Colored Gelcoat)
- TV PRE-WIRING IN SALON 115V
- TV PRE-WIRING IN FWD CABIN 230V
- US RAYMARINE CARTOGRAPHY
- AIS 700 RAYMARINE TRANSMIT
- OPENING PORTHOLE AFT CABINS
- PLEATED BLINDS IN THE SALON
- TEAK COCKPIT FLOOR

**Contact us for the complete OC46.1 #400 Package.**

## Disclaimer

The company offers the details of this vessel in good faith but cannot guarantee or warrant the accuracy of this information nor warrant the condition of the vessel. A buyer should instruct his agents, or his surveyors, to investigate such details as the buyer desires validated. This vessel is offered subject to prior sale, price change or withdrawal without notice.





2023 Beneteau OC46.1 #400



2023 Beneteau OC46.1 #400





2023 Beneteau OC46.1 #400



2023 Beneteau OC46.1 #400



2023 Beneteau OC46.1 #400



2023 Beneteau OC46.1 #400





2023 Beneteau OC46.1 #400



2023 Beneteau OC46.1 #400



2023 Beneteau OC46.1 #400



2023 Beneteau OC46.1 #400



2023 Beneteau OC46.1 #400



2023 Beneteau OC46.1 #400





2023 Beneteau OC46.1 #400



2023 Beneteau OC46.1 #400

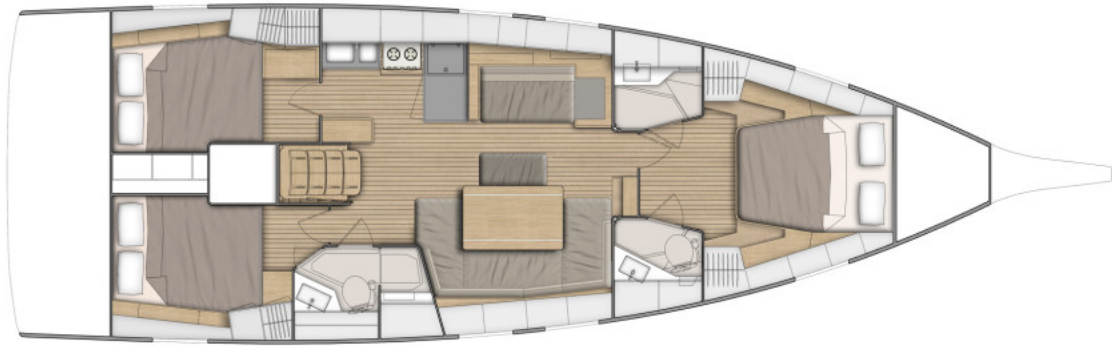




2023 Beneteau OC46.1 #400



2023 Beneteau OC46.1 #400



2023 Beneteau OCEANIS 46.1 Three Cabins / Two Heads Layout

# **5 Year Exclusive YANMAR Engine Coverage**

Beneteau and YANMAR proudly offer a 5 year warranty on your YANMAR engine. This exclusive warranty is available to Groupe Beneteau brands only. Feel confident in your voyage with the reliability of a YANMAR, the world's largest support network, and now an exclusive 5 year warranty.

*The 5 Year Exclusive Beneteau/YANMAR Warranty covers engine, Kanzaki shaft gears, control systems, service, and parts for 5 full years. Conditions apply; see reverse for details.*

For standard warranty details, see the  
YANMAR Limited Warranty Handbook.

[www.yanmar.com/marine](http://www.yanmar.com/marine)



2023 Beneteau OCEANIS 46.1 5 Year Exclusive Yanmar Engine Coverage