



40' (12.19m) 2024 Tartan 395
For Delivery Annapolis Washington United States



OVERVIEW

Manufacturer: *Tartan*

Engines:

Engine Model:

Engine HP:

Beam: 12' 8"

Max Draft: 6' 2"

Water: 100 G (378.54 L)

Hull Material: Fiberglass

Cruise Speed: Knots

Max Speed: Knots

Cabins/Heads: /

Fuel Type: Diesel

Fuel: 40 G (151.42 L)

Call for Price



Data Sheet

Category: Cruiser-Racer	Knots	Displacement: 16000 lbs
Condition: New	Knots	Fuel Tank: 40 gal (151.42 liters)
Model Year: 2024	Fuel Type: Diesel	Fresh Water: 100 gal (378.54 liters)
Beam: 12'8" Max Draft: 6' 2" LOA: 40' (12.19m)	Hull Material: Fiberglass	
Single Berths: 7		

Engines/Generators



Summary/Description

Our commitment to design and engineering is based on total performance.

At Tartan Yachts we have a passion to deliver the best sailboat owner experience possible. Our commitment to design and engineering is based on total performance. We don't believe that a simple superficial appeal to aesthetics is enough to serve the interests of our owners. Our designers, builders, and sales team understand and appreciate that every yacht we build must be the best yacht we build. Most importantly we are committed to the next 50 years with the focus of simply making our customer experience the best the industry has to offer.

Disclaimer

The company offers the details of this vessel in good faith but cannot guarantee or warrant the accuracy of this information nor warrant the condition of the vessel. A buyer should instruct his agents, or his surveyors, to investigate such details as the buyer desires validated. This vessel is offered subject to prior sale, price change or withdrawal without notice.



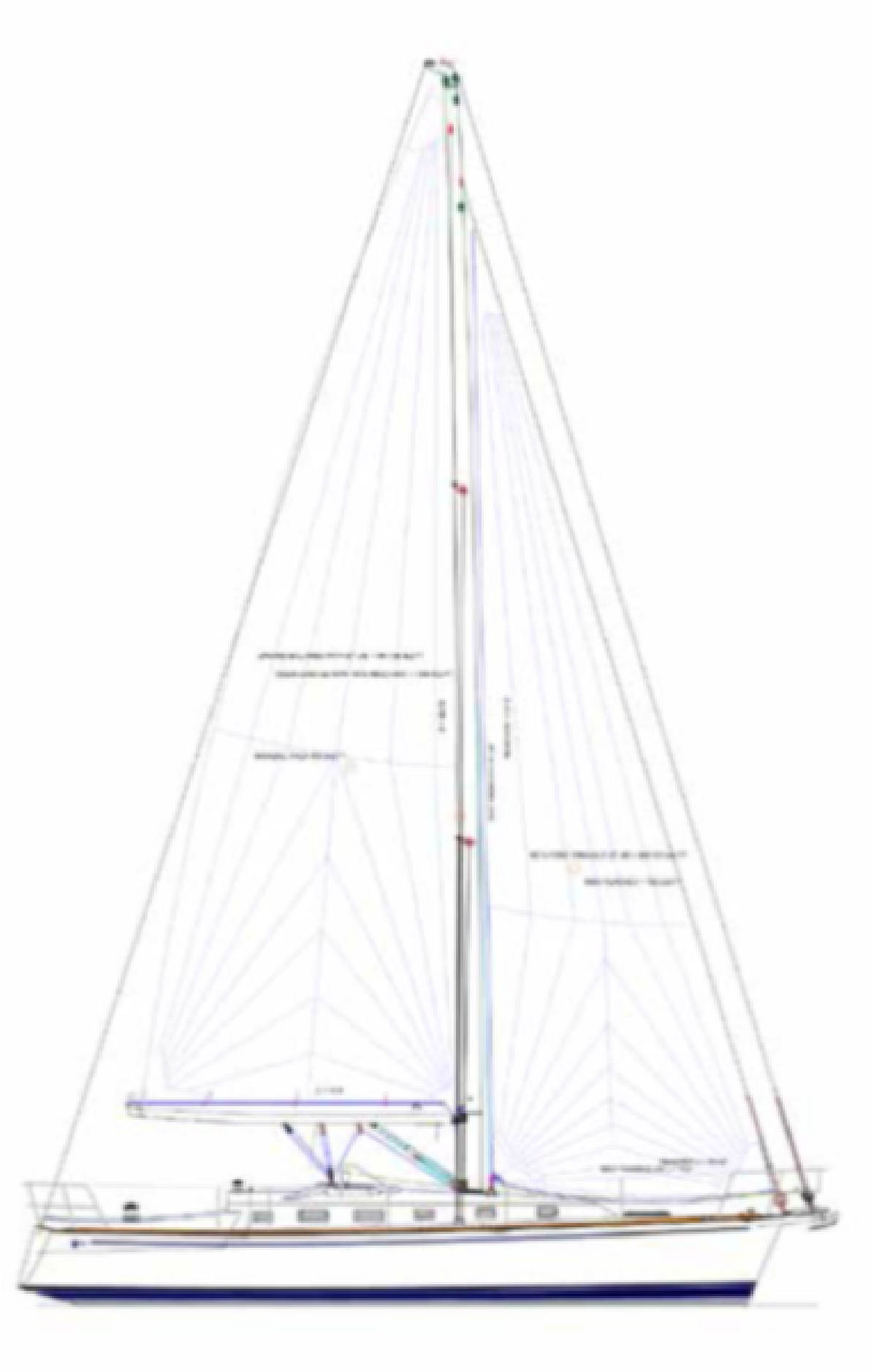


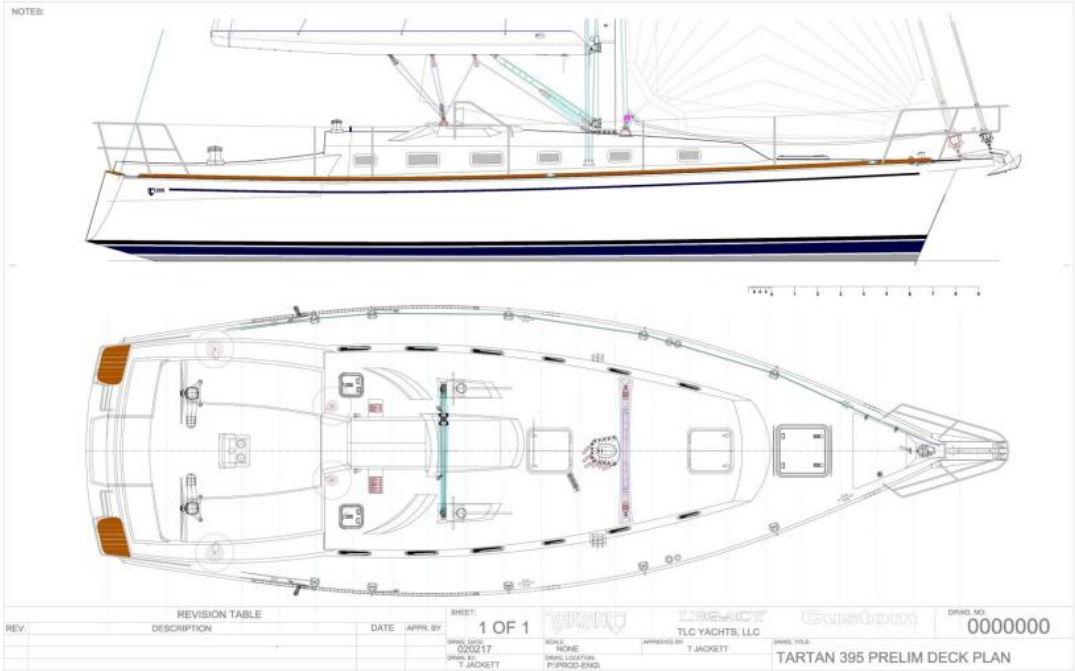






2019 Tartan Profile





Deck Plans

