



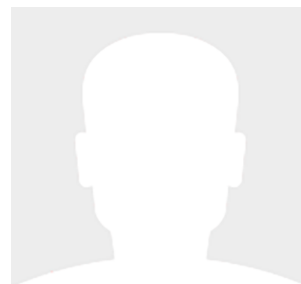
37' (11.00m) 2011 Jeanneau 379  
Fort Lauderdale Florida United States



## OVERVIEW

**\$195,000**

Manufacturer:	Jeanneau		
Engines:	1 Yanmar	Hull Material:	Fiberglass
Engine Model:		Cruise Speed:	Knots
Engine HP:	29	Max Speed:	Knots
Beam:	12' 9"	Cabins/Heads:	/
Max Draft:	"	Fuel Type:	Diesel
Water:	85 G ( L)	Fuel:	243 G ( L)



## Data Sheet

Category: Sloop  
Subcategory: Cruiser-Racer  
Condition: Used  
Model Year: 2011  
Beam: 12'9" (3.89m)  
LOA: 37' (11.00m)  
Single Berths: 6

Knots  
Knots  
Fuel Type: Diesel  
Hull Material: Fiberglass

Fuel Tank: 243 gal Fresh Water: 85 gal  
Designer: JD/Garroni/M.Peter

## Engines/Generators

### Engine 1

Yanmar  
Inboard  
29HP  
21.63KW  
Fuel: Diesel

## Summary/Description

For Sale

Built in USA - Come See How She is Made!!!

In-Mast Furling Mainsail - • Ease of handling • Quick furling of the sail • No hassle reefing.

Swing keel version FAST Design 3'7" to 7'5". (\$12,000 added Option For Optimal SPEED)!

Large head compartment with shower

Huge Storage to Port Aft -Make a 3rd Cabin or even room for a Generator!!!

Multi-functional navigation station - Fully-equipped galley

Exceptional Ergonomics "BOAT OF THE YEAR 2012" ~SAIL

The Sun Odyssey 379 represents the perfect balance of ingredients that have made the Sun Odyssey range a success. The performance-oriented hull comes from the drawing boards of Marc Lombard. Special attention was given to the ease of sail handling, the ergonomics and the modern aesthetics. A hull with a hard chine, a keel designed with the help of powerful software and a powerful twin rudder ensure the speed and the stability of the Sun Odyssey 379.

Down below, comfort, space and seaworthiness are the key words. The interior design marries solid wood, stainless steel and light fabrics to provide a warm feeling. At sea, as in port, functional and practical details make the difference. A galley with numerous storage compartments, a high-capacity fridge, a large saloon table, a hanging locker in the saloon and easy conversion of seating areas to berths, everything onboard affirms the Sun Odyssey 379 as a true cruiser.

Overall length 11,34 m / 37' 2"

Hull length 10,98 m / 36'

Waterline length 10,40 m / 34' 1"

Beam 3,76 m / 12' 4"

Displacement 6.700 kg / 14.771 lbs

Swing keel draft 1,10 - 2,25 m / 3' 7"- 7' 4" "Beachable" Twin Rudder and Shoal Winged Keel

Engine power Yanmar 29 Hp / 21 kW

Cabins 2 / 3 Berths 4 / 6 + 3

Fuel capacity 130 l / 34 US gal Water capacity 200 l / 53 US gal

Sail area / Surface 70 m<sup>2</sup> / 754 Sq ft

CE Category CE A8 / B10 / C12

Designers / Architectes Marc Lombard - Jeanneau Design

International Standards All Jeanneau boats carry the CE certification which ensures strict standards for stability, safety and structure. In addition, all boats 12m and over are certified by the Bureau Veritas, an independent engineering certification. This certification includes every part of the conception and building process.

The marine ecosystem is among the most fragile on Earth. We are acting to protect this vital resource, as our ISO 14001 certification attests. Each Jeanneau Boats benefits from the latest environmentally friendly equipment for minimal impact on plant and animal life, whether at sea or at port.

## Disclaimer

The Company offers the details of this vessel in good faith but cannot guarantee or warrant the accuracy of this information nor warrant the condition of the vessel. A buyer should instruct his agents, or his surveyors, to investigate such details as the buyer desires validated. This vessel is offered subject to prior sale, price change, or withdrawal without notice.



**Swing keel version\***









New  
Nouveauté  
Neu  
Novedad  
Novità  
2012

NEW 2012  
Sun Odyssey  
379



## Timelessness of Beauty

### Quality The Timelessness of Beauty

Our total quality control system tracks a product through the entire production process and beyond. From laboratory tests of each batch of resin to tank testing to customer satisfaction questionnaires and frequent supplier reviews, we continually seek ways to improve our boats.

### Dependability

Quality starts with the best materials and components. Aboard a Jeanneau you will find equipment from the leaders in each field, because we only use suppliers that share our commitment to quality control and product excellence. These premium suppliers also help ensure servicing of your

only use the highest quality deck fittings. This helps create the legendary Jeanneau seaworthiness that comes with 50 years of experience in building offshore boats.

### ISO 9001

As an ISO 9001 company, the Jeanneau's building process is

### Satisfaction The Enjoyment of Beauty

At Jeanneau, we know that delivering excellent boats is only the beginning; excellent customer service must follow. When you purchase a Jeanneau you become part of our family.







NEW 2012  
Sun Odyssey  
379



Looking into the cockpit and my comments are: "Wow!"  
"This is a really nice boat, it's a real beauty!"  
"I've never seen a boat like this before!"  
"This is a really nice boat, it's a real beauty!"  
"I've never seen a boat like this before!"  
"This is a really nice boat, it's a real beauty!"  
"I've never seen a boat like this before!"



