



TRUE NORTH

41' (12.50m) 2018 Beneteau Oceanis 41.1
Yarmouth Maine United States



OVERVIEW

Manufacturer:	Beneteau		
Engines:	1 Yanmar	Hull Material:	Fiberglass
Engine Model:	4JH45	Cruise Speed:	7 Knots
Engine HP:	45	Max Speed:	9 Knots
Beam:	13' 9"	Cabins/Heads:	2 / 1
Max Draft:	5' 7"	Fuel Type:	Diesel
Water:	87 G (329.33 L)	Fuel:	53 G (200.63 L)

\$299,000



Data Sheet

Category: Cruisers
Condition: Used
Model Year: 2018
Documented Year: 2018
Beam: 13'9" (4.19m)
Max Draft: 5' 7" (1.70m)
LOA: 40' 9" (12.42m)
Cabins: 2
Sleeps: 4
Heads: 1

Maximum Speed: 9 Knots
Cruise Speed: 7 Knots
Range NM: 745
Fuel Type: Diesel
Hull Material: Fiberglass
Hull Shape: Monohull
Bridge Clearance: 59' 10"

Gross Tonnage: 18
Fuel Tank: 53 gal (200.63 liters)
Fresh Water: 87 gal (329.33 liters)
Holding Tank: 21 gal (79.49 liters)
Builder: Beneteau
Exterior Color: White
HIN/IMO: BEYKL059B818

Engines/Generators

Engine 1

Yanmar
4JH45
Inboard
45HP
33.56KW
Fuel: Diesel
Hours: 780
Hours Date: 02-02-2024
Year: 2018
Location: Middle

Summary/Description

Freshwater boat, spacious 2-cabin light oak interior with loads of upgrades for cruising. B&G electronics, new Quantum sails. In-mast furling, electric winches, sails 2022/3.

TRUE NORTH is an ideal cruising boat for a family or two couples, and having spent most of its life on the Great Lakes, has pristine machinery and systems.

INTRODUCTION

Fresh Water Boat

TRUE NORTH is a like-new Oceanis 41.1 that has been in fresh water from new until August, 2023.

Her 2-cabin layout features a huge master cabin, spacious guest cabin and great utility cabin/ workshop. The interior joinery is of blonde oak with contrasting dark soleboards.

On deck she is easy to handle with in-mast furling and three electric winches. Lines are led aft to cockpit and managed in jammers. The cockpit is spacious and protected; the full enclosure allows for it to be a great living space in any weather.

Factory upgrades include 280 watts of solar panels, a 2000 watt inverter, cockpit canvas with full enclosure, Quantum Fusion M6 sails 2022 and 2023, Sea Swag custom bedding, Kato Marine arch with davits, electrically-operated swim platform, and additional water tank and house battery capacity.

TRUE NORTH is an ideal cruising boat for a family or two couples, and having spent most of its life on the Great Lakes, has pristine machinery and systems.

CONSTRUCTION

- Design made following European Directive requirements and according to EC certification
- Monolithic hull in polyester
- Monolithic structural hull liner bonded to the hull
- Deck injection constructed in glass fiber and SAERform foam sandwich, covered with "diamond-point" non-slip coating
- Cast iron keel fixed with bolts and stainless steel backing plates
- Rudder hung with glass composite stock
- Hull is white

DECK EQUIPMENT

RIGGING

- Standard mast 9/10 anodized aluminum installed on the deck, (2) sets of spreaders

- Anodized aluminum boom
- Discontinuous stainless steel standing rigging
- (2) Backstay: Bridle
- Rigid boom vang
- Genoa furling system with drum on the deck
- Stand-up block for mainsail on fixed composite arch
- (2) Genoa tracks with adjustable cars, lines and cleats running to cockpit
- (2) Genoa sheet return blocks
- Rigging run back to cockpit, including boom topping lift
- Complete running rigging: main halyard, genoa halyard with clutch on mast and cleat, boom topping lift with cleat on mast, mainsheet, (2) genoa sheets
- 6-Line stopper

WINCHES

- (2) Self-tailing electric genoa sheet winches (H46.2 STAEH)
- Coach roof winch self-tailing electric (H40.2 STAEH), starboard
- Coach roof winch self-tailing (H40.2 STA) port
- (2) Aluminum Lewmar One Touch Power Grip winch handles
- (2) Winch handle storage

SAILS

- Furling genoa with UV protective strip, natural color upgraded to Quantum Fusion M6 in 2023
- In-mast furling mainsail upgraded to Quantum Fusion M6 in 2022
- Upgraded asymmetrical spinnaker by Ullman Sails (1367 sq ft)

MOORING - ANCHORING GEAR

- Windlass
- Rocna anchor with 200 feet of chain and upgraded Mantus swivel
- Self-bailing chain locker - clench bolt - hatch cover
- Double roller stainless steel bow fitting with offset roller
- (6) Aluminum mooring cleats - stainless steel deck line protection

SAFETY ON DECK

- Open stainless steel forward pulpit
- (2) Stainless steel aft pushpits
- Ring lifebuoy bracket
- Flag mounts welded on aft pushpit
- Double lifelines and stainless steel stanchions - access to port and to starboard in lifelines
- Emergency ladder (pushpit)

COCKPIT

- Self-bailing cockpit
- Sail locker (to port)
- (2) Lockers in cockpit floor under helm's feet
- Life raft locker starboard seat (3'-1" x 1'-8" x 1'-1")
- Gas locker
- Teak slatted cockpit benches
- (2) Steering wheel consoles: stainless steel steering wheels - 900 mm diameter, leather covered
- Steering gear at the helm station: metal cable transmission system, stainless steel handrail, navigation instrument pod (optional instruments), glass holder
- Deck filler for access to tiller system
- Emergency tiller
- (2) Steering compasses on consoles
- Portside engine control and control panel
- Cockpit table, stainless steel frame, cup holders, (2) leaves in composite upgrade
- Mainsail arch (fixed, composite, built-in lighting)
- (2) Hinged companionway doors, sliding hatch

SWIM DECK/STERN DECK

- Fully-opening transom, converts into swim platform (9'-1" x 2'-5")
- Electrically operated
- Natural solid wood decking on swim platform
- Stainless steel integrated telescopic swimming ladder

INTERIOR

OVERVIEW

- Blond oak joinery
- Parquet type laminated floors
- Fabric upholstery in "Commando Monument" grey
- Mattress in cabins, HR35kg/m3 foam
- Wood slats under all bunks for better air flow and comfort

COMPANIONWAY

- Headroom: 6'-4"
- Wooden salon companionway with molded wood hanging steps with nonslip surface
- Leather-covered stainless steel handrails

SALON

- Headroom: 6'-4"
- U-shaped salon bench, double density foam
- Saloon table, folding leaf, varnished wooden top, central and side storages, bottle holder
- Mirror on starboard bulkhead
- Storage space along the hull, storage under bench seats
- (2) Coach roof panoramic windows with curtains
- (2) Hull portholes with curtain

- (2) Opening portholes on coaming inside windows
- Opening deck hatch with fan, mosquito/blind

CHART TABLE - PORTSIDE

- Table with flap, molded wood beading
- Switch panel on bulkhead for access to electrical functions
- Reading light
- (2) USB ports

GALLEY - PORTSIDE

- Headroom: 6'-4"
- L-shaped galley
- Countertop of synthetic surfaces
- Stainless steel sink, rectangular basin. Mixer tap cold/hot water, under pressure
- Gas stove with (2) burners - stainless steel oven on gimbal mountings - stainless steel protection handrail
- Refrigeration: top and front opening + freezer
- Microwave
- Fitted cupboards and closed cubbyholes - garbage bin
- Lower cupboard: (2) drawers, storage
- Opening portlight with curtains inside windows in the coaming
- Storage space along the hull, with sliding door
- Portable 12V DC / 120V AC freezer

STARBOARD AFT HEAD

- Headroom: 6'-1"
- Separate shower - mixing tap hot/cold water
- Electric marine toilet
- Rigid holding tank, 21 US gal
- SCAD holding tank monitor
- Sink: mixing tap hot/cold water
- Washroom cabinet
- (2) Mirrors
- Toilet accessories
- Opening portlight with curtains inside windows in the coaming

STARBOARD AFT CABIN

- Headroom: 6'-4"
- Double bed (6'-9" x 4'-10" x 3'-10")
- Hanging locker - open cubbyholes
- Bed access sideboard
- Hull porthole with curtain
- Cockpit windows with curtains

- Porthole opening onto cockpit with curtain
- Flush deck hatch with shutter/mosquito screen

AFT-GALLEY STORAGE WORKSHOP (PORT AFT)

- Headroom: 6'-4
- Access via galley
- Large storage area (hanging locker, cupboard units)
- Space for dishwasher (optional) in place of dresser
- Access door to port cockpit locker
- Flush deck hatch with blind/mosquito screen

FORWARD CABIN

- Headroom: 6'-2"
- Centerline double berth (6'-7" x 4'-11")
- Hanging locker (portside), cupboard with shelves (starboard), open lockers along the hull
- Storage space under berth
- (3) Flush deck hatches with blind/mosquito screen
- (2) Hull portholes with curtains

ENGINE

- Yanmar 4JH45 engine (diesel): 2018, 45 HP common rail
- Engine hours approximately 760, Dec 2023
- Engine control panel in cockpit
- Engine compartment: soundproofing foam, ventilation: air intake and air outlet
- Alternator 125 A
- Rotomolded diesel tank 53 US Gal (under port sail locker), Electronic gauge, Low level alarm, deck filler
- Filters: sea water – (2) diesel
- Folding three-blade Flexifold propeller
- Sail drive
- Primary engine access through companionway (opening with (2) gas pistons), additional engine access through aft cabins

ELECTRICITY

- 12 V Circuit
- (4) Service batteries (85 Ah)
- Engine battery (110 Ah)
- (2) Bow thruster batteries
- 12 V Electrical panel: fuses, voltmeter, water gauge, fuel gauge, battery warning
- Victron smart battery monitor
- (2) 140 Watt solar panels with Victron MPPT controller and monitor
- Xantrex Freedom X 2000W inverter
- Fuel warning, water warning
- 12 V Power lighter style outlet and USB ports in every cabin and one added to cockpit table
- LED lighting: overhead lights, reading lights
- Navigation lights (LED): forward and aft navigation lights, engine steaming light

- Deck light forward of mast, mooring light on masthead

PLUMBING

- Rotomolded freshwater tank, 53 US gal, fwd cabin, deck filler
- Additional 34 US gal under aft starboard bunk making 87 US gal total
- Water pressure system, expansion tank, in-line filter
- Electric water heater 11 US Gal (engine run or shore power)
- Rigid holding tank 21 US Gal (starboard aft head compartment)
- Delayed shower draining and electric shower drain pump
- Electric bilge pump
- Manual bilge pump

PROPANE

- Box fits (2) gas bottles, located in cockpit (11" x 1'-5")
- Regulator (replaced 2023) and solenoid

FACTORY OPTIONS & UPGRADES

- Trim Level Exclusive
- B&G Electronics: 1 T41 graphic display at helm
- B&G Electronics: Sensor (log, speedometer, temperature, depth)
- Wind sensor B&G (wind speed and direction)
- Windex windvane
- Cockpit shower hot/cold water
- Electric windlass with remote control and helm control with chain counter
- Fusion stereo
- Interior speakers, waterproof exterior speakers
- USB ports (one in each cabin)
- Full 110 V shore power system
- 60 A battery charger
- Additional (2) 85 Ah additional service batteries for a total of (4) per above
- Gel batteries
- Electrically opening swim platform
- Remote control for swim platform at steering station and (2) portable remote controls
- Helm seats, slatted teak
- (2) Halyard bags
- (2) Removable textile storages on arch
- Front opening icebox in galley
- Cover on sink
- Storage space under the floor
- LED indirect lighting in saloon
- LED courtesy light in cockpit
- Stainless steel beading for fenders in cockpit locker
- Self-tacking hardware
- Ambiance package taupe
- Electronic pack B
- Flag halyards to P&S spreaders
- Asymmetric spinnaker gear

- Furling mast
 - Genoa sheet leads adjustable from cockpit
 - Two H46.2STAEH electric genoa sheet winches
 - H40.2STA halyard winch on port cabin top
 - H40.2STAEH electric starboard halyard winch on starboard cabin top
 - Cockpit windlass control with chain counter
 - Extra bow roller and stainless steel bobstay
 - Outboard engine bracket
 - Deluxe cockpit table
 - Rubrail
 - Bow thruster with (2) batteries
 - Deck wash pump
 - Dock water inlet
 - Extra water tank
 - Microwave
 - A/C and reverse-cycle heat with two Dometic compressors and separate forward / aft controls
 - Salon double berth
 - Slatted bed bases
 - Electric toilet
 - Folding prop, 3-blade Flexifold
 - Samsung smart TV in salon
 - B&G 4G radar
 - B&G autopilot
 - VHF radio, VHF handset
 - B&G NAIS 500 AIS transponder 2020
 - Port screens
 - Teak slatted cockpit sole
-
- CANVAS PACKAGE
 - Dodger, bimini, connector, cockpit cushions, various covers
 - Upgraded full enclosure, with all new bimini, dodger and connector canvas 2023
 - Winter cover with aluminum frame
-
- OTHER
 - Upgraded chart chip for plotter
 - Electric horn with automatic fog signals, PA and intercom
 - Additional B&G T41 graphic display at starboard helm
 - Cabin fans

RECENT UPGRADES

2023

- (2) 140 Watt Sunpower rigid solar panels, Victron monitor and Victron MPPT100 controller
- Victron BMV712 smart battery monitor
- Xantrex Freedom X 2000W inverter
- Genco canvas dodger, bimini and cockpit enclosure
- Quantum Fusion M6 genoa

- Recut original Doyle genoa into self-tacking jib
- Sea Swag custom bedding to cabins

2022

- Kato Marine custom arch with dinghy davits and outboard bracket
- Quantum Fusion M6 roller furling mainsail
- (6) Atlantic Inflatables inflatable fenders with covers

2018

- Ullman A1.5 $\frac{3}{4}$ oz Asymmetrical spinnaker with sock

DISCLAIMER

The company offers the details of this vessel in good faith but cannot guarantee or warrant the accuracy of this information nor warrant the condition of the vessel. A buyer should instruct his agents, or his surveyors, to investigate such details as the buyer desires validated. This vessel is offered subject to prior sale, price change or withdrawal without notice.



TRUE NORTH 2018 Beneteau Oceanis 41.1













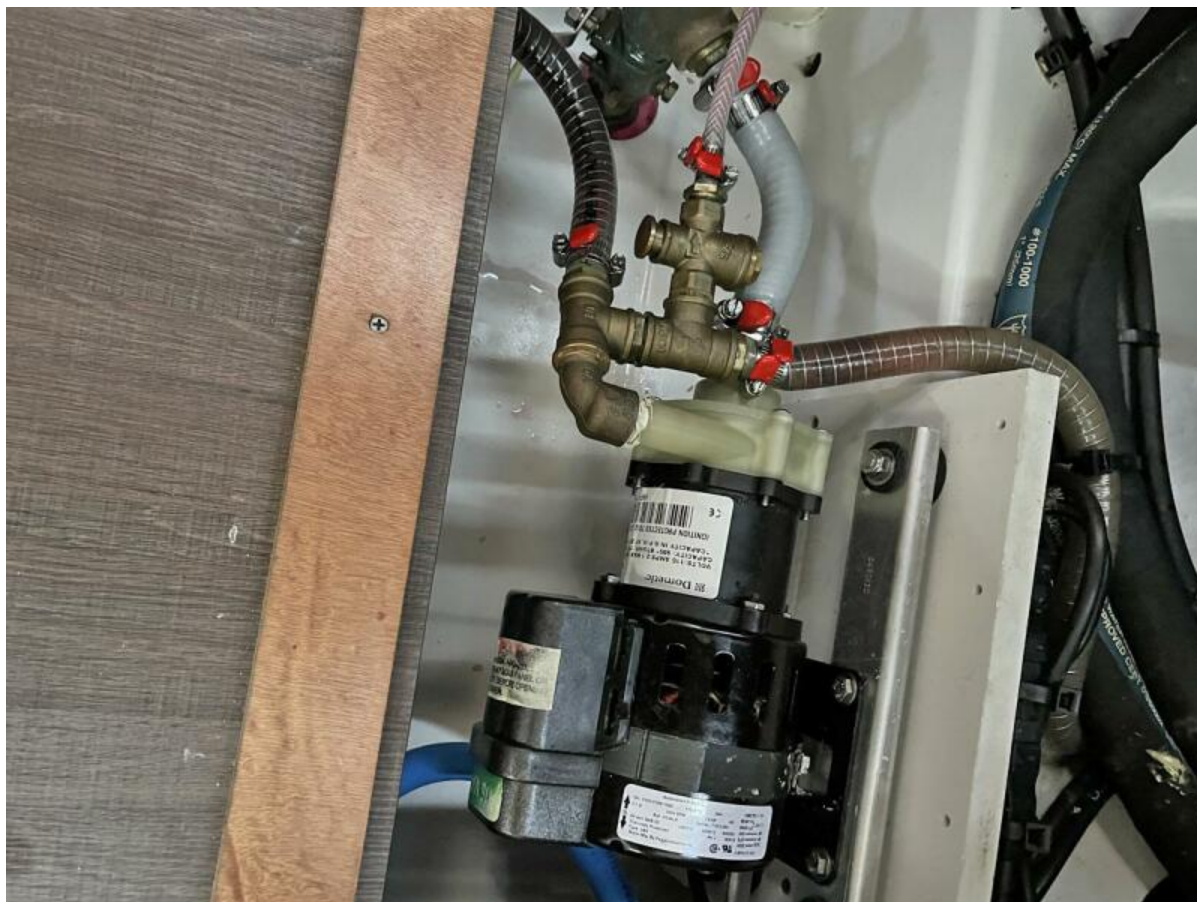
















































2 CABINS + 1 TOILET