



# LUCKY B

70' (21.34m) 2010 Hylas 70  
Norfolk Virginia United States



## OVERVIEW

Manufacturer:	<i>Hylas</i>		
Engines:	1 Yanmar	Hull Material:	Fiberglass
Engine Model:	6BY	Cruise Speed:	8 Knots
Engine HP:	260	Max Speed:	10 Knots
Beam:	18' 0"	Cabins/Heads:	4 / 4
Max Draft:	7' 6"	Fuel Type:	Diesel
Water:	400 G (1514.16 L)	Fuel:	700 G (2649.79 L)

**\$799,000**



## Data Sheet

Category: Cruisers  
Condition: Used  
Model Year: 2010  
Beam: 18' (5.49m)  
Max Draft: 7' 6" (2.29m)  
LOA: 69' 7" (21.21m)  
Cabins: 4  
Sleeps: 8  
Heads: 4

Maximum Speed: 10 Knots  
Cruise Speed: 8 Knots  
Fuel Type: Diesel  
Hull Material: Fiberglass

Gross Tonnage: 38  
Fuel Tank: 700 gal (2649.79 liters)  
Fresh Water: 400 gal (1514.16 liters)  
Holding Tank: 135 gal (511.03 liters)  
Builder: Hylas  
HIN/IMO: HSY70008A010

## Engines/Generators

### Engine 1

Yanmar  
6BY  
Inboard  
260HP  
193.88KW  
Fuel: Diesel  
Year: 2010  
Location: Middle

### Generator 1

Northern Lights  
40KW

## Summary/Description

Motivated seller, recent yard maintenance period, seriously for sale and easy to see in Fort Lauderdale. LUCKY B is a great example of the respected Frers-designed Hylas 70, largest of the popular and highly respected Hylas Yacht Series, built on a semi-custom basis to the highest standards.

## Notable recent upgrades and completed projects (2021-2023)

- New Iridium Go! SatComms device
- New Raymarine navigation instrument package
- New stereo system & speakers easy mobile phone control
- New Pepwave 5G modem & antenna
- Replaced all halyards and sheets - many with Dyneema/high tech cordage
- New custom SS bowsprit for spinnaker tack
- New Caribe 430 dinghy
- Rebuilt windlass gearbox
- New interior OceanAir blinds on order 8/23
- Watermaker overhauled

## ACCOMMODATIONS

LUCKY B features the standard four-cabin layout with three en-suite owner/guest cabins, plus an additional en-suite crew/guest cabin.

Finely crafted solid teak Euro-styled joinerwork and veneer surfaces are finished in satin varnish throughout, with custom burl table tops in salon. Cabin soles are satin finished teak with custom locking mechanisms. Head and shower areas are all painted white Awlgrip and feature Corian vanity tops, solid Corian sinks and molded floors. Hanging lockers are lined with cedar and feature automatic lights. White Ultraleather headliner with OceanAir hatch screens/blinds throughout. All interior fabrics, décor and bedding were upgraded in 2017, including faux leather seating, accent pillows, cool gel memory foam mattresses, and two sets of fitted sheets.

### FORWARD GUEST STATEROOM:

Beginning forward is a private VIP stateroom with a king-sized berth, settee and significant storage space, including a large hanging locker, drawers and several cabinets. An en-suite head is forward, along with a shower stall shared with the port guest cabin.

### PORT GUEST STATEROOM:

Forward of the main salon and to port is the second guest cabin, featuring a generous double berth, hanging locker and multiple drawers and lockers. There are (3) opening portholes and a large deck hatch. A head and shower stall is across the passageway.

### **MAIN SALON:**

The H70's main salon is extraordinarily large for a vessel of this size, due in part to her generous 18' beam. A large L-settee is to port, with a beautiful burlled table that expands as needed to accommodate six comfortably, and can be lowered to a coffee table position. Two folding seats are inboard and can be stored away while underway. To starboard is a full-length settee with burlled table that can be expanded or lowered to coffee table height, and an Avanti built-in wine cooler. Light, ventilation and visibility are provided by two large deck hatches and teak-trimmed tinted deck house windows along the front and sides.

### **NAV STATION:**

Aft and to starboard is an L-shaped navigation station with easy access to the cockpit. There is a comfortable pedestal chair along with built-in backlit switch panels, navigation instruments and remote-control panels for the water maker and tank monitors. The workspace also includes a chart table with custom storage for computer and (in adjacent cabin) a printer.

### **GALLEY:**

Further aft and to port is a long galley that is fully equipped for comfortable living at sea or on anchor. There are several well-thought-out storage lockers for glass, dinnerware and appliances. Some of the many features include:

- Corian countertops
- Large single stainless sink
- (4) Vitrifrigo refrigerator drawers
- (4) Vitrifrigo freezer drawers with built-in icemaker
- Force 10 3-burner propane stove with oven and stainless cover
- Two-burner electric cook top
- GE Advantium convection/microwave oven
- Fisher & Paykel dishwasher drawer
- Broan trash compactor
- Full complement of dishes, glasses, cutlery, galleyware etc.
- (3) Opening portholes for light and ventilation

### **CREW QUARTERS/GUEST CABIN:**

A passageway leads aft along the starboard side to the owner's cabin with a roomy fourth cabin outboard – quite suitable for crew or guests -- with over/under berths, plus a private head with shower. There are (2) opening portholes, plus one each in the head and shower.

### **MASTER STATEROOM:**

The full-beam owner's private stateroom is located aft and features a large 66" berth on centerline with a vanity to port. There are (2) large hanging lockers, (14) drawers and numerous cabinets. Light and ventilation provided by a deck hatch and (4) opening portholes. A private head with separate shower stall and (2) opening portholes is found along the port side.

## **NAVIGATION & ELECTRONIC EQUIPMENT**

- New Raymarine chart plotters
- New Raymarine wind & sea transducers
- New Raymarine multifunction sailing instruments
- New Raymarine HD color radar
- New Raymarine autopilot
- Raymarine AIS 500 transmitter/receiver
- ICOM 604A VHF with command mic and hailer
- ICOM M-802 SSB with auto tuner and insulated backstay antenna
- Cell phone mast head antenna, amplifier and wireless repeater
- KVH FB250 sat phone
- Iridium Go! SatComms device
- Sirius satellite weather system
- PepWave WiFi system
- FLIR thermal imaging camera mounted on pulpit
- (2) Raymarine cameras on mast

## **ENTERTAINMENT EQUIPMENT**

- KVH HD7 satellite TV system
- New widescreen TV in main salon
- New flatscreen TV in owner's cabin
- Flatscreen TV in guest cabin forward
- Bose Built-Invisible V10 surround sound stereo/CD/DVD system in main salon
- Independent SONOS system w/ speakers and audio amplifiers in each cabin

## **ELECTRICAL SYSTEM**

- 12/24 Volt DC and 110 volt AC electrical systems with custom panels at nav station
- Northern Lights 40 kW generator (new 2018) 1,860 hours as of 8/2023
- ACME 15 KVA isolation transformer for European shore power
- (2) Mastervolt 80 amp/24 volt amp battery chargers
- (2) Mastervolt 12 volt battery chargers
- Mastervolt 4,000 watt inverter
- Balmar 220 amp/24 volt alternator in addition to std. 70 amp
- (8) 24 volt AGM house batteries, 1000 AH (all new, late 2018)
- Engine, generator and 12 volt house batteries (all new, late 2018)
- (2) 50 amp/240 volt shore inlets with cables and multiple adapters
- (2) Cablemaster electric auto-reel for shore power cord
- TV/phone inlet
- Electrical bonding system including (2) 3" copper strips bow to stern each side
- 12 Volt plugs in cockpit and at nav station
- Cabin fans at each berth and in main salon, galley and heads
- Exhaust blowers for all heads
- Rope accent foot lighting throughout
- (3) Underwater lights at transom
- Transom LED stair lighting
- LED navigation lights
- Most interior lights converted to LED



## ENGINE / MECHANICAL EQUIPMENT

- Yanmar 6BY- 260 hp diesel – 4,600 hours as of 8/2023
- Dripless shaft seal, shaft isolation coupler and Variprop 4-blade feathering propeller
- Shaft removed, trued, and realigned 8/2023
- Spare prop on board
- New engine mounts (2019)
- Dual Racor fuel filters with bypass valves for fuel polishing
- Mamba mechanical steering system
- Engine room blower
- Electric oil change pump for main engine and generator
- Fireboy automatic engine room fire extinguisher
- Lewmar 300 TT 24 volt bow thruster (new motor, 2018)
- Cruisair reverse-cycle air conditioning with (5) zones – 65,000 BTU total
- (4) VacuFlush toilets with electric freshwater flush, custom controls (2023)
- Pressurized fresh water with dual pumps (one new, 2018)
- Kuuma 20-gallon hot water heater (new, 2018)
- Seagull X6 water filtration system plumbed to all cold-water taps
- (2) Fiberglass black water tanks with custom monitor panel, and (3) gray water collectors – all with automatic pump-out
- Custom Wema monitor panels for easy fuel and water tank level management
- Spectra 700 MK II 110/12 Volt watermaker
- Twin automatic electric bilge pumps, plus lazarette pump
- Manual bilge pump
- Anchor wash down pump (fresh and salt water)
- Splendide washer/dryer (2018)
- (2) 20 lb. propane tanks and regulator in ventilated deck locker

## SAILS & RIGGING

### Rig:

- Forespar three-spreader mast, painted off white (new paint, 2018)
- GMT hydraulic in-boom mainsail furling system
- Furlex hydraulic genoa and staysail furlers
- Harken Hydra 2 hydraulic system to power furlers and winches
- Navtec rod standing rigging (V-1's, headstay and inner forestay, new, 2018)
- PBO running backstays with retrieving lines
- All new running rigging 2022
- GMT spinnaker/whisker pole, stored on mast
- Navtec hydraulic boom vang and split backstay controls, with Harken push-button control panel at helm (rams re-built 2023)
- Boom preventer built-in
- Lewmar mainsheet traveler system
- Steaming, foredeck and aft deck lights
- Up/down spreader lights

### Sails:

- Doyle Dacron, fully battened furling mainsail (2018)
- Doyle performance-cruising triradial 135% furling genoa (10/2022)
- Doyle performance-cruising furling staysail (2022)
- Doyle full-radial asymmetrical furling spinnaker (2022)
- Spinnaker sail

#### **Winches:**

- Antal W 80 hydraulic self-tailing primary winches
- Antal W 66 hydraulic self-tailing mainsheet and main halyard winches
- Antal W 66 hydraulic self-tailing staysail/runner winches
- Antal W 44 self-tailing traveler control winches
- (2) Antal W 52 self-tailing genoa and staysail halyard winches at mast

## **HULL & APPENDAGES**

Solid hand-laid Twaron reinforced fiberglass hull using Vinylester resins and Isophthalic Gelcoat with epoxy barrier coating. There is a teak rub rail on the outer hull with stainless striker. Balanced spade rudder with partial skeg for optimal performance, strength and protection. There are watertight collision bulkheads aft of forepeak locker and forward of aft lazarette. Topsides are Dark Blue Awlgrip with gold cove stripe, double red boot stripes. New barrier coat applied 2021, bottom paint 2023.

## **DECK**

Fiberglass with balsa core and solid laminate in areas of deck hardware, laid teak decks and cabin top, white gelcoat and molded-in beige non-skid around cockpit coamings. Modern transom with molded-in steps, swim platform and built-in swim ladder. There is a transom garage door that opens hydraulically for easy access to extensive storage space with custom shelving, along with large corner lazarette lockers each side, accessible on the aft deck. On the foredeck there is a deep forepeak locker with line hangers and a separate split chain locker forward.

Teak toe rails and all stainless deck hardware, including (7) low-profile stainless hatches, (22) opening portholes, double anchor rollers, Antal genoa tracks and cars, Harken turning blocks, mooring cleats etc.

## **COCKPIT**

One of the many highlights of H70 design is the spacious cockpit with twin helm stations for easy access from the aft deck and great visibility while steering. The cockpit space was designed to maximize seating for ten comfortably around a beautiful varnished 6' teak table with drop-leaves and built-in drink cooler. The twin helms greatly benefit short-handed sailing, with all sail controls within easy reach.

## **OTHER FEATURES**

- Twin Lewmar hydraulic anchor windlasses
- Rocna 88 lb. anchor with 300' 1/2" chain
- Delta 80 lb. anchor with 30' 1/2" chain and nylon rode
- Varnished teak handrails
- Teak cockpit sole and seat tops
- Stern pulpit extended to side gates with drop-down teak pushpit seats each side

- Dodger and bimini (beige), with oversized 1-1/4" S/S frame, clear connector, helm windows, full enclosures and removable side
- Adjustable white and red lighting wired into bimini
- Hot/cold shower at transom
- Ritchie 6" compass at each pedestal with stainless grab bars
- Winslow 8-man life raft in canister, mounted on stern rail
- Switlik MOM
- Ditch bag with EPIRB, supplies
- ACR EPIRB
- Twin radar reflectors on mast
- Horseshoe life ring
- (4) Inflatable PFD's with harnesses
- (4) Life jackets
- Flare kit
- Lifesling
- Medical kit
- Fenders and dock lines
- Varnished teak companionway hatch slides with padded storage bag
- Teak/stainless side-boarding ladder
- Simpson S 300 stainless dinghy davits with electric hoist
- Bosun's chair
- Numerous spares
- Caribe 430 dinghy with Yamaha 40 hp 4-stroke outboard

## **EXCLUSIONS**

Personal effects





LUCKY B



Stbd Side At Dock





Anchor And Pulpit



Foredeck Looking Forward





Foredeck Looking Aft



Aft Deck





New Canvas



Stbd Side Decks & Cockpit





Aft Cockpit Enclosure



Port Helm Seat





Port Helm



Stbd Helm





Helm Pedestals And Cockpit



Cockpit Looking Aft





Cockpit Table



Main Salon





Main Salon



Port Salon Settee



Salon Dining Area



Stbd Salon Settee





Stbd Settee And Nav Station



Nav Station Desk





Galley



Galley





Galley Forward



Fwd Passageway



Fwd Cabin V-Berth





Fwd Head



Fwd Head



Fwd Head





Passageway Looking Aft



Owner's Berth



Owner's Berth Stbd





Owner's Berth Port



Owner's Cabin Looking Fwd



Owner's Head





Guest Cabin



Head



Head





Stall Shower



Bunk Cabin





Gooseneck and Mast



Boom Furler





Generator



Engine Room





Engine Room





Dinghy



Sugarscoop Transom Stairs





Stbd Side at Anchor

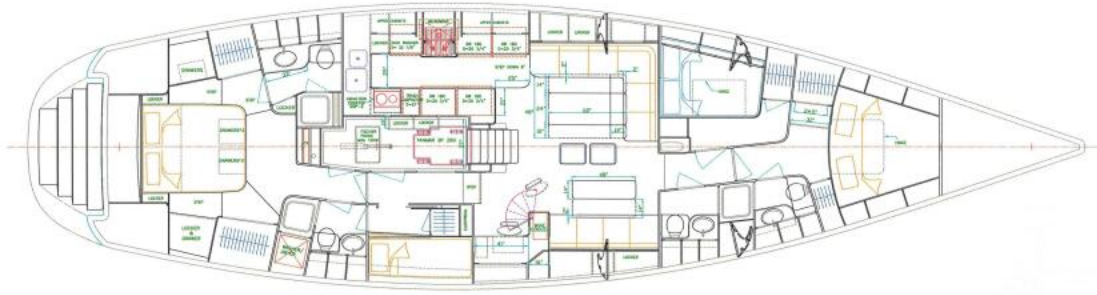


Starboard Bow At Anchor





Profile



Layout