



# MAISIE MCGOO

38' (11.58m) 2009 John Williams Stanley 38  
Bristol Rhode Island United States



## OVERVIEW

Manufacturer:	<i>John Williams</i>		
Engines:	1 Cummins	Hull Material:	Fiberglass
Engine Model:	QSM 8.3-M	Cruise Speed:	14 Knots
Engine HP:	540	Max Speed:	17 Knots
Beam:	112' 8"	Cabins/Heads:	1 / 1
Max Draft:	3' 6"	Fuel Type:	Diesel
Water:	200 G (757.08 L)	Fuel:	250 G (946.35 L)

**\$825,000**



## Data Sheet

Category: Downeast  
Condition: Used  
Model Year: 2009  
Documented Year: 2009  
Beam: 112'8" (34.34m)  
Max Draft: 3' 6" (1.07m)  
Min Draft: 3' 6" (1.07m)  
LOA: 38' 4" (11.68m)  
LWL: 36' 4" (11.07m)  
Cabins: 1  
Sleeps: 4  
Convertibles: 1  
Queen Berths: 1  
Heads: 1

Maximum Speed: 17 Knots  
Cruise Speed: 14 Knots  
Fuel Type: Diesel  
Hull Material: Fiberglass  
Hull Shape: Displacement  
Hull Finish: Awlgrip

Bow Thruster: Yes  
Stern Thruster: Yes  
Fuel Tank: 250 gal (946.35 liters)  
Fresh Water: 200 gal (757.08 liters)  
Holding Tank: 45 gal (170.34 liters)  
Builder: John Williams Boat Company  
Designer: Lyford Stanley  
Exterior Color: Black  
HIN/IMO: JMW38007E606

## Engines/Generators

### Engine 1

Cummins  
QSM 8.3-M  
Inboard  
540HP  
402.68KW  
Fuel: Diesel  
Hours: 870  
Hours Date: 02-27-2024  
Year: 2009  
Location: Middle

### Generator 1

Northern Lights  
5KW  
Hours: 469

## Summary/Description

Striking John Williams/ Stanley 38' Downeast style cruising yacht. Finest quality and equipment. Professionally maintained in top condition.

MAISIE MCGOO has been professionally maintained in meticulous fashion since new.

If you are looking for a special and unique Downeast yacht MAISIE MCGOO is a must see.

## INTRODUCTION

MAISIE MCGOO is the flagship of the John Williams Boat Company. With her elegantly appointed traditional furnishings, long sleek hull design, varnished teak cabin house and Sitka spruce mast she presents herself as a strikingly beautiful and majestic looking yacht.

Comfortable both underway and in port, she is a great boat for adventurous cruising. With her single 540 hp Cummins diesel, protected propeller and rudder she is a good choice for cruising in areas where twin engine boats are threatened by shallow waters and fishing gear. Further, with thrusters both forward and aft she is easy to maneuver in tight spaces.

MAISIE MCGOO has been professionally maintained in meticulous fashion since new. If you are looking for a special and unique Downeast yacht MAISIE MCGOO is a must see.

## ACCOMMODATIONS

Open layout main cabin with spacious centerline berth forward. Hanging locker to port with settee and bar/writing table in front. Large drawers under foot of berth and outboard to starboard provide plenty of space for clothing storage.

The galley is to port aft with electric stove, microwave oven, bronze sink and apartment style subzero refrigerator and freezer. There are drawers and cabinets above, below and outboard for full storage of cookware, dishes, utensils, dry goods and other galley essentials.

The head and stall shower are opposite to starboard. Up three steps is the enclosed pilothouse with helm to starboard and nav desk to port. Oversized bench seats for comfortable seating underway are situated at each. Behind the copilot seat to port is an L-shaped settee that converts to a comfortable double berth. There are three large opening windows forward, two sliding windows port and starboard, a large sliding window behind the settee aft and sliding door for access to the spacious aft deck.

## ENGINE

- 2009 Cummins QSM 8.3-M Diesel Engine
- Model 540 HP
- Rated RPM 2600

- Engine Type: Inboard
- Engine Hours: 870 (as of 02/27/24)
- Drive Type: Evolution Drive System
- Five Bladed Bronze Propeller
- Reverso Oil Transfer Pump

## **HULL FEATURES**

- Hull Color: Awlgrip Super Jet Black #G2017
- Boot Top: Awlgrip Off White #G8010
- Hull Laminate: Vinylester Resin
- Stainless Steel Rudder with 1-3/4" Rudder Post
- Bronze Ball Valve Seacocks and Thru Hulls Below and Above Waterline 12 Volt Trim Tab Set w/Helm Controls
- Drain Plug
- 6" Access Tube Directly Over Propeller
- Sound Deadening "Silent Running" Inside of Hull, Forward Sections Sound Deadening Propeller Tiles
- Propeller Spur Cutters on Shaft Imtra Underwater Lighting

## **MECHANICAL SYSTEMS**

### **Fuel System**

- Two Vinylester Resin Fiberglass Fuel Tanks, One Port, One Starboard Under the Platform, Each Holding 125 Gallons
- Two Racor Filters with Two Valves for Fast Switching Between Tanks
- Two 2" Fuel Fills w/ABYC Approved Suction, Vent and Fill Lines
- Mechanical Rochester Fuel Gauges w/Remote Helm Read Outs

### **Plumbing System**

- Two 100 Gallon Polypropylene Water Tanks, One Port, One Starboard Located Under Platform
- Water Tender Gauges
- Hot and Cold Pressurized Water to the Galley and Head Through (w/Back-up Pump)
- 12 Gallon Stainless Steel Hot Water Tank Headed by Engine Underway and Shore Power in Port
- 25 Gallon Fiberglass Waste Tank with Overboard Discharge, Macerator Pump Out and Deck Fitting Pump Out
- Raritan Elegance electric head (2022)
- Additional 20 Gallon Waste Tank
- Two Rule 2000 Bilge Pumps, One Forward, One Just Behind Engine
- One Manually Operated Diaphragm Bilge Pump Connect to a Strainer in Engine Area
- Fresh and Salt Water Wash Down System w/ Faucets in Cockpit and Bow
- Hot and Cold Water Shower System Located Under Stern Deck to Port

### **Engine System**

- Wet Muffled Vernay Products 6" Exhaust System Insulated for Noise Reduction Exiting out the Stern
- Custom Soundown Muffler
- Single Station Kobelt Control Unit and Cables
- 2" Wilcox Seawater Strainer and Seacock

- John Williams Boat Company 2" Lead Lined Foam Insulation System in Engine room and Shaft Alley
- Natural Ventilation for the Engine Area from Two Side Mounted Bronze Cowl Vents Directing Air Flow to the Stern
- Fire Boy Automatic Fire Extinguisher in the Engine Area
- Dry Chemical Fire Extinguishers - Helm and Galley

## **Steering System**

- Wagner Manual Hydraulic Steering System
- Bronze Edson 26" Destroyer Steering Wheel with Elk Hide Cover

## **ELECTRICAL SYSTEM**

- Mastervolt Electrical Panel with Specified Capacity Breakers to Meet Requirements
- 110 Volt Shore Power Entrance with Mastervolt Inverter/Charger Control System
- Guest Main Switch
- Northern Lights 5kw Generator w/469 Hours
- 660 watt Xantrex DC solar charging system (2023)
- Cummins Electrical Engine Panel
- Basic ABYC Approved Wiring and Lighting Circuits
- USCG Approved Running Light System
- Bronze Kahlenberg Horn with Compressor
- Bronze 6" Jabsco Spotlight
- Four Northstar NSB210 Batteries
- Side Power SE80 Bow Thruster
- Max Power Retractable Stern Thruster
- Diesel Fired D4 Espar Heater
- Three Intermittent Windshield Wipers
- 3" Copper Electrical Bonding System Connected Stem to Stern
- AM/FM Stereo w/8 Speakers
- Katadyn Watermaker 30 GPD
- 2nd Mastervolt 90 amp Alternator
- 19" Toshiba TV

## **ELECTRONICS**

- 16" Garmin touch screen multi-function display at helm (2023)
- RayMarine C140W chart plotter at copilot seat to port
- Garmin Fantom 18 Doppler radar (2023)
- Vesper cortex full class B AIS (2023)
- Fusion Apollo 3 zone marine stereo system (2023)
- Icom M506 VHF
- B&G Instruments (Speed, Depth and Wind)
- Ship Clock and Barometer
- Ritchie Compass

## **PLATFORM, DECK AND RAILS**

- Teak Pilothouse and Cockpit Soles
- Sound Deadening Sylomer Between Platform Frames and Teak Cover to Reduce Noise
- Teak Cockpit Steps to Fit Both Sides

- Two Additional Cockpit Hatches in the Cockpit Outboard
- Teak Swim Platform Attached to Transom w/ swim ladder
- Varnished Teak Transom
- Lewmar V2R Bronze Windlass
- Heavy Duty Bronze John Williams Boat Company Bow Roller
- Two Bronze Bow Chocks
- Two Bow Cleats, Four Breast Cleats, Two Stern Cleats - All Bronze
- Anchor Deck Hawse Pipe Forward
- Bronze Flag Staff Holder at Stern
- 44 lb Claw Anchor
- Six Opening Bronze ABI Ports with Screens
- One Custom Varnished Teak Hatch Forward with Dead Light
- One Custom Varnished John Williams Boat Company Teak Butterfly Hatch
- Two Small Varnished Teak Hatches over Galley and Head
- Bronze Stem Iron
- Bronze Custom John Williams Boat Company Bow Rail
- 14" Side Decks
- Varnished Teak Toerails, Rubails and Quarter Guards with Bronze Half Oval
- Varnished Teak Port and Starboard Aft Facing Cockpit Seats
- Bronze Harken Self Tailing Winch on Stern Deck

## **SUPERSTRUCTURE AND PILOTHOUSE**

- Composite Molded One Piece Unit
- Varnished Teak Pilothouse Sides, Windshield and Aft Pilothouse Enclosure
- Cabin and Pilothouse Tops and Moondust Awlgrip #G6004
- Three Opening Black Framed Forward Pilothouse Windshield Windows and Four Opening Side Windows
- Varnished Teak Handrails on the Cabin Top and Pilothouse Top
- Varnished Teak Centerline Handrail
- Varnished Teak Pilothouse Furniture Includes John Williams Boat Company Helm and a Nav Seats, Starboard Settee, and Portside Dinette/Settee that Makes into a Double Bunk
- Pilothouse Sole is Finished Teak
- Pilothouse Overhead is 3/4" Soundown Insulation with Varnished Teak Carlings and Trim
- Access to Pilothouse Through Full Size Sliding Door and Dutch Door (Half Door) to Port
- Varnished Sitka Spruce Mast and Boom with Bronze Hardware, Tabernacle Step and Full Rigging
- Teak Helm and Nav Footrests
- Dometic Refrigerator for Beverages
- Pilothouse Wainscoting
- Varnished Teak Name Boards
- Custom Interior Curtains
- Custom Interior Green Ultra Leather Cushions

## **FORECASTLE**

- Stanley Herreshoff Interior
- Corner Posts, Ledger Boards, Fiddles, Moldings, and Basic Wooden Structure are Varnished Teak, Including Drawer Fronts and Louvered Door Lockers
- Soundown Overhead with 3/4" Insulation with Varnished Teak Carlings and Wainscott Ceiling
- Varnished Teak Sole
- One Centerline Bunk Forward, Slightly Elevated with Port and Starboard Steps for Easy Access
- Shelves Port and Starboard Mounted Above the Bunk on the Hull Sheathing for Stowage

- Port Settee Seating Area Aft of Bunk
- Starboard Cedar Lined Upper Hanging Locker and Double Chest of Drawers Below
- Custom Hall Quarry Granite Countertops in Galley and Head
- Large Head to Starboard with electric flush toilet, Counter Console, Bronze Sink, Varnished Teak Looker Doors and Drawer Fronts
- Separate Stall Shower Forward in Head with Teak Grate, Shower Curtain and Potable Water Fixtures
- Teak Companionway Steps
- Dust Pan and Grate Mounted in Sole Just Aft of Companionway Steps
- Custom Green Leather Cushions

## DISCLAIMER

The company offers the details of this vessel in good faith but cannot guarantee or warrant the accuracy of this information nor warrant the condition of the vessel. A buyer should instruct his agents, or his surveyors, to investigate such details as the buyer desires validated. This vessel is offered subject to prior sale, price change or withdrawal without notice.





MAISIE MCGOO

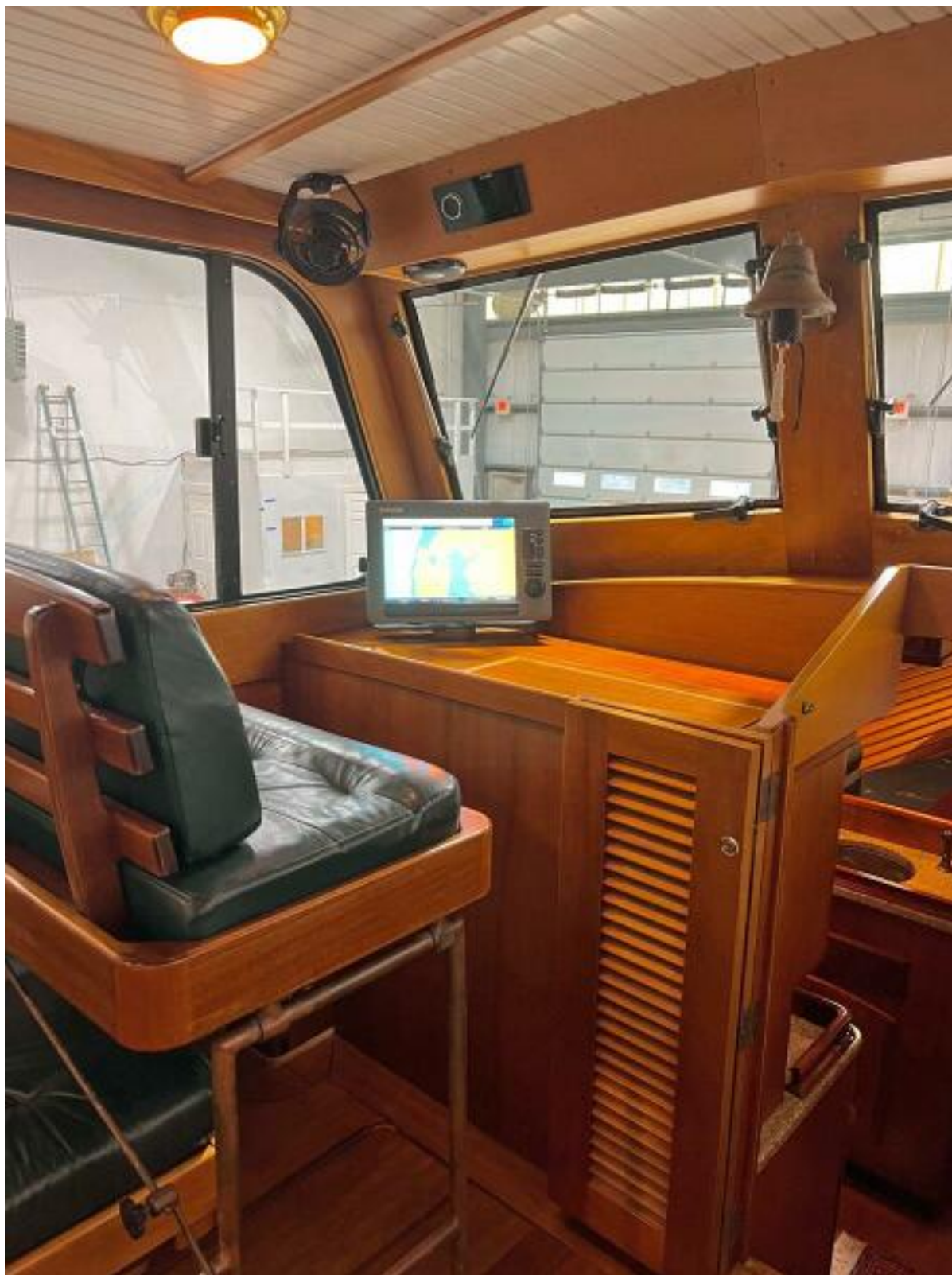


Pilothouse Fwd





Helm



Copilot Seat





Pilothouse Aft Stbd



Pilothouse Aft Port



Companionway



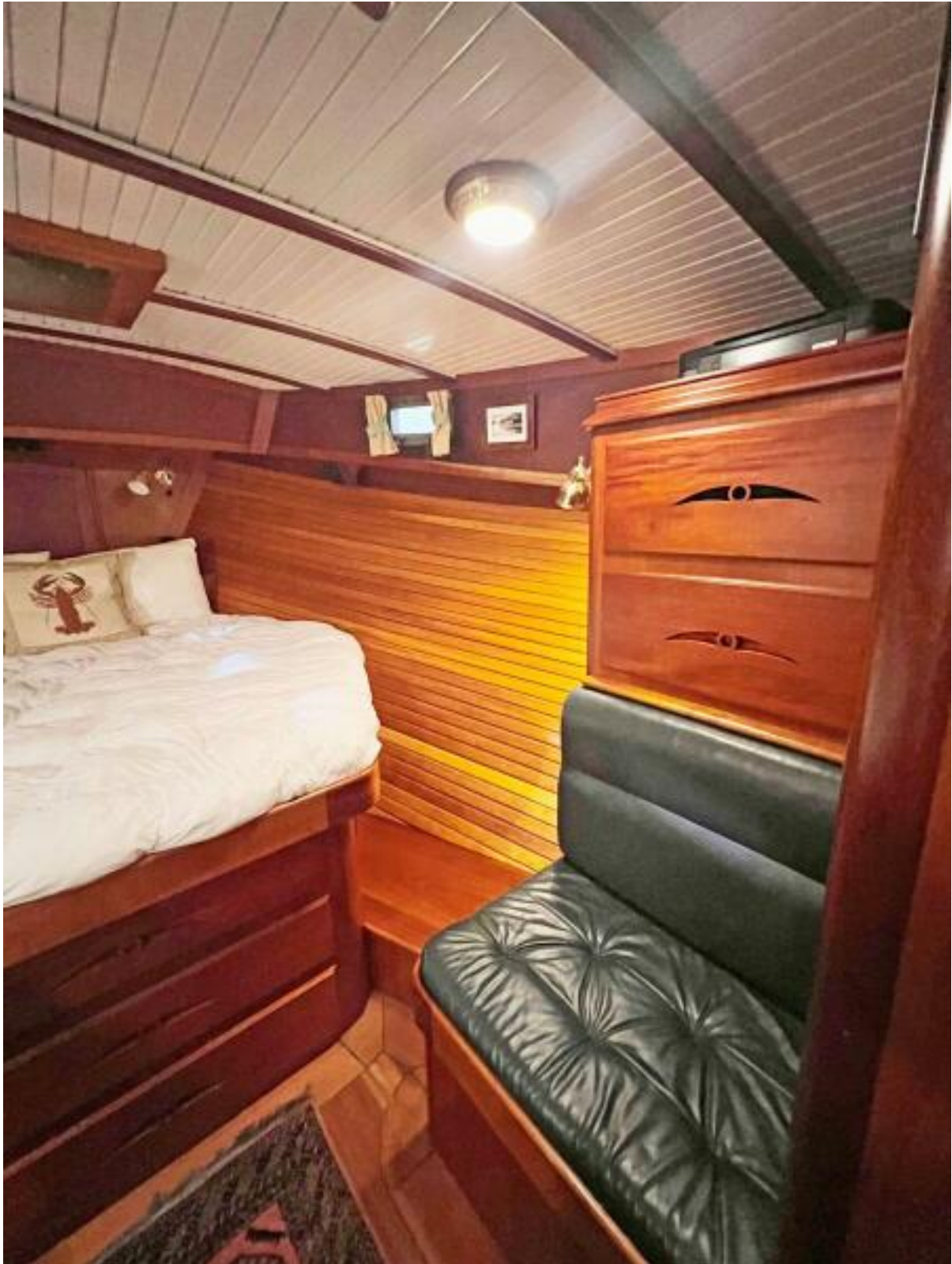


Cabin With Bar



Cabin Queen Berth





Cabin Storage



Head Vanity





Head And Stall Shower

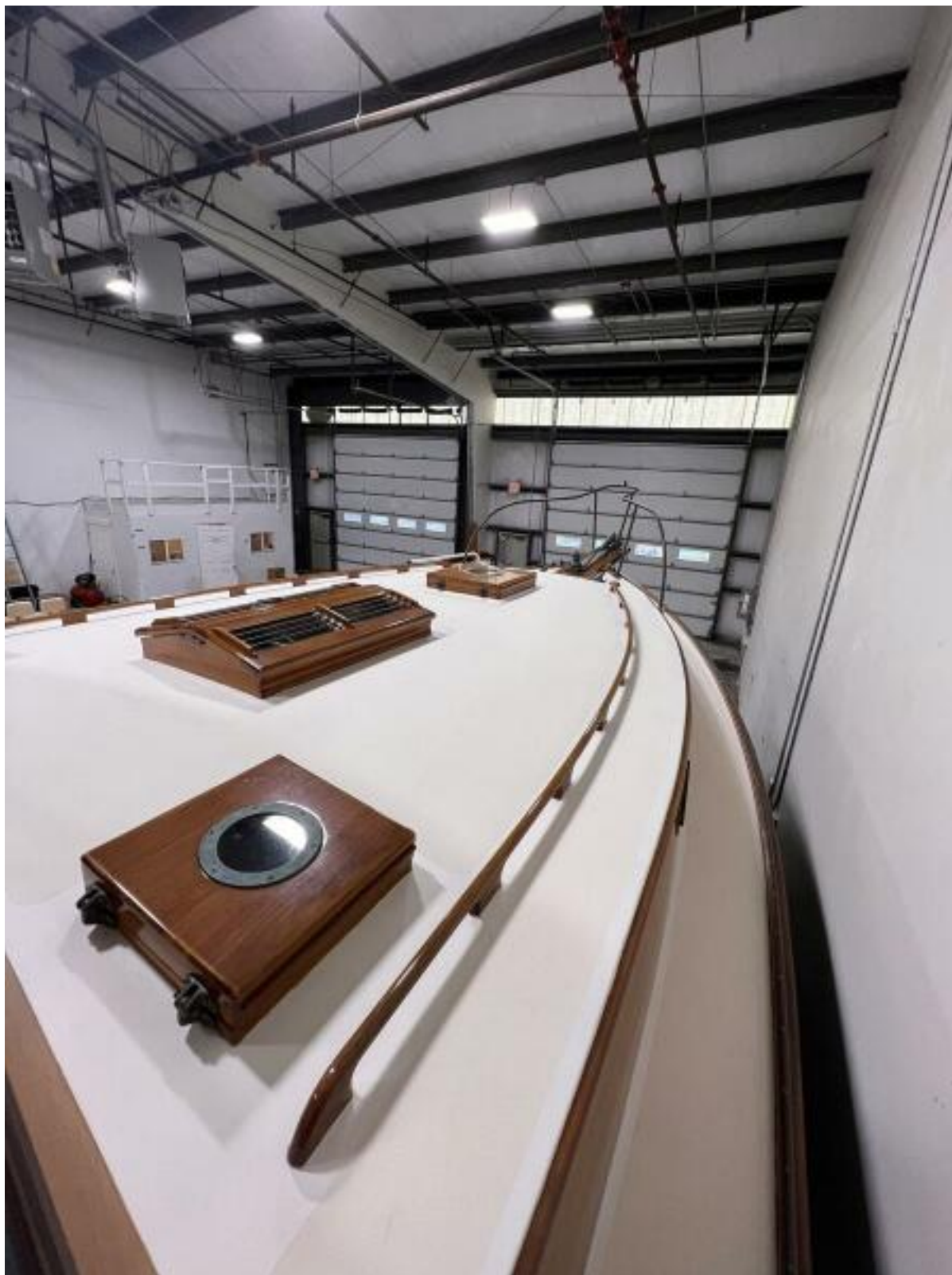


Galley





Looking Aft



Cabintop





Butterfly Hatch



Cockpit



Cockpit Aft