



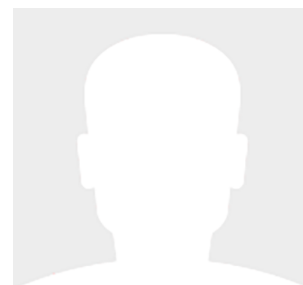
48' (14.00m) 2019 Fairline Targa 48 GT  
Unknown United States



## OVERVIEW

Manufacturer:	Fairline		
Engines:	2 Volvo Penta	Hull Material:	Fiberglass
Engine Model:	IPS 700	Cruise Speed:	Knots
Engine HP:	550	Max Speed:	Knots
Beam:	14' 2"	Cabins/Heads:	2 / 2
Max Draft:	3' 10"	Fuel Type:	Diesel
Water:	482 G ( L)	Fuel:	1309 G ( L)

Call for Price



Data Sheet

Category: Sports Cruiser	Knots	Fuel Tank: 1309 gal Fresh Water: 482 gal
Subcategory: Express Cruiser	Knots	
Condition: New	Fuel Type: Diesel	
Model Year: 2019	Hull Material: Fiberglass	
Beam: 14'2" (4.32m)		
Max Draft: 3' 10" (1.17m)		
LOA: 48' (14.00m)		
Cabins: 2		
Heads: 2		

Engines/Generators

Engine 1

Volvo Penta  
IPS 700  
Inboard  
550HP  
410.14KW  
Fuel: Diesel

Engine 2

Volvo Penta  
IPS 700  
Inboard  
550HP  
410.14KW  
Fuel: Diesel

## Summary/Description

For Sale

### Call for pricing information

Be one of the first to own the ever popular Targa 48GT with the latest Volvo IPS 700 engines. This impressive yacht is made even more so with the addition of these upgraded engines for model year 2019. Quality, luxury, performance and style.

- June 2018 delivery
- Full USA specification
- Upgraded Volvo IPS 700 engines
- 3 cabin layout
- Total Marine is your authorized Fairline Yachts dealer for the mid-Atlantic and Northeast

## Steering System

Joystick Control

### Manufacturer Provided Description

Welcome to a truly wonderful open-to-the-skies experience, where you can choose to invite in the warmth and sociability of your environment, with one elegant sweep of your electric hardtop.

Look beyond the exciting, sun-appreciating nature of this sports cruiser and you will find new technologies and exceptional engineering. The hull, for instance, has been specifically designed to compliment the Volvo Penta IPS engines, resulting in even more precise handling, along with impeccable sea keeping. Taking the hardtop in question, it comes with panelled glazing as standard for that 'open, even when closed' sensation.

Moving through the boat you'll find a luxuriously spacious, sociable upper deck that offers plentiful seating, in addition to a well-appointed helm station with twin seats. The cockpit features a J-shaped seating area with a table, and can offer the option of a sunbed conversion. The lower deck has three cabins as standard and there is an optional lower saloon/dinette in lieu of the third cabin layout. Perfectly formed, perfectly thought-through. Everything you come to expect from a Fairline.

## Deck

- Anchor chain locker
- Anchor winch controls
- Anchor winch (electric)
- Calibrated anchor chain
- Ensign & staff
- Fender set
- Full set of IMCO navigation lights

- Hot & cold water transom shower
- Moulded non-slip deck surface
- Recessed self-draining area on foredeck for coach-roof cushions
- Riding light
- Rubbing strake
- Self-stowing Delta® anchor
- Stainless steel bow fairlead
- Stainless steel bow, spring & stern cleats
- Stainless steel handrails
- Stainless steel pulpit
- Stainless steel stemhead roller
- Stainless steel transom wing cleats
- Swim ladder to bathing platform
- Teak-laid bathing platform (with option of submersible platform)
- Toughened glass curved windscreen
- Transom gate from cockpit to integral bathing platform
- Twin horns
- Water filler
- Windscreen washers
- Windscreen wipers

## Helm Position

- 12V socket
- Bilge pump switches with integral operating warning lights & audible alarms
- Twin helm seat
- Controls for engine bay fire extinguisher system
- Drinks holders
- Electronic single-lever throttle & gear controls for port & starboard engines
- Fuel gauges
- Full engine instrumentation including; tachometers, temperature gauges, audible alarms & engine hour meters
- Garmin GMI 20 digital multi-function instrument system with colour display
- Garmin VHF marine radio
- Helm position indicator
- High-speed magnetic compass
- IPS joystick
- Remote anchor winch controls
- Searchlight with remote control at helm
- Waterproof switches for navigation & riding lights, windscreen wipers & engine bay extractor fans

## Electrical

- All 240V, 24V & 12V circuits (where applicable) protected by circuit breakers with main electrical load control panel
- Electrical sockets
- Heavy duty circuit breakers
- Isolating switches to all batteries

### 12 Volt

- Batteries – 2 x heavy duty batteries for domestic services

- 1 x heavy duty battery for exclusive port engine starting
- 1 x heavy duty battery for exclusive starboard engine starting
- Emergency battery coupling system permits starboard engine to start port engine if domestic batteries accidentally discharged

## **240 Volt**

- Polarity check & earth leakage protection system
- Power points throughout the boat fed from shore power or generator
- Regulated battery charger
- Shore power supply

## **Cockpit**

- 12V heavy duty weatherproof socket
- Bathing platform lights
- Boat hook
- Central dining area with table
- Drinks holders
- Engine bay access hatch
- Fender stowage
- Gas locker
- Lazarette under cockpit seat
- Life raft stowage
- Manual bilge pumps
- Mooring warps
- Step for side deck access
- Teak laid cockpit
- Warp lockers

## **Hull and Construction**

- Antifouling protection to hull
- Design, layout & detailing by the Fairline design team
- Full length moulded spray deflectors
- Hardtop with electric sliding roof
- Integrally moulded engine bearers
- Polyurethane foam cores throughout deck for strength & thermal insulation
- Transverse & longitudinal strengthening stringers throughout hull

## **Accommodations**

### **Main Saloon**

- Companion seating opposite helm
- Companionway steps with handrail to galley & accommodation
- Dining table
- LED ceiling lights
- 32" LCD television
- Manual opening windows
- Radio with wireless connectivity
- Side board with storage for bottles & glasse

- Sofa
- Stainless steel door to cockpit with integral blind system
- Storage locker to helm seat base
- Stowage locker under seating

### **Lower Saloon**

- Access to day head
- Aerial & connections for television
- Cocktail table converts to dining table
- Companionway timber steps with handrail
- First aid kit
- Hull window
- LED ceiling lights
- 22" LCD television
- Lockers (overhead)
- Radio & iPod dock with 2 speakers
- Sofa
- Stowage locker under dinette seating
- Underfloor stowage locker

### **Master Cabin**

- Access to en suite
- Bedside tables
- Chest of drawers
- Full length double bed
- Full length mirror
- LED ceiling lights
- Opening portholes
- Reading lights
- Vanity unit
- Wardrobe

### **Master En Suite**

- 220V/240V shaving point
- Automatic shower tray pump-out system
- Electric silent-flush freshwater toilet
- Extractor fan
- Solid surface vanity unit locker & basin with hot & cold pressurised water
- Full set of bathroom fittings
- Full standing-height shower with integral shower tray & adaptable shower head
- Hand basin with hot & cold water
- Mirror
- Opening porthole
- Stowage locker

### **Forward Cabin**

- Access to shower/WC compartment
- Bedside tables

- Double bed converting to V-berth
- Full length mirror
- Hatch to foredeck
- Headboard shelf unit
- LED ceiling lights
- Lockers (overhead)
- Low level drawers
- Opening portholes
- Reading lights
- Trinket locker
- Wardrobe

### **Guest En Suite**

- 220V/240V shaving point
- Automatic shower tray pump-out system
- Electric silent-flush freshwater toilet
- Extractor fan
- Solid surface vanity unit locker & basin with hot & cold pressurised water
- Full set of bathroom fittings
- Full standing-height shower with integral shower tray & adaptable shower head
- Hand basin with hot & cold water
- Mirror
- Opening porthole
- Stowage locker

### **Third Cabin (optional, in lieu of lower saloon)**

- Full length mirror
- Full length twin bunk beds
- LED ceiling lights
- Opening porthole
- Reading lights
- Wardrobe

### **Crew Cabin (optional)**

- Single berth
- Sink
- Storage locker
- Toilet

## **Engines**

- Automatic bilge pumps for engine bay with a manual 'on' override
- Automatic engine bay fire extinguisher system
- Electric engine bay fans
- Electric trim tabs with cathodic protection
- Engine bay lights
- Engine room soundproofing
- High capacity emergency manual bilge pump system with changeover valves
- Sea cocks on all inlets/outlets below waterline

## Disclaimer

The Company offers the details of this vessel in good faith but cannot guarantee or warrant the accuracy of this information nor warrant the condition of the vessel. A buyer should instruct his agents, or his surveyors, to investigate such details as the buyer desires validated. This vessel is offered subject to prior sale, price change, or withdrawal without notice.





Manufacturer Provided Image: Fairline Targa 48 Gran Turismo



Manufacturer Provided Image: Fairline Targa 48 Gran Turismo Stern





Manufacturer Provided Image: Fairline Targa 48 Gran Turismo



Manufacturer Provided Image: Fairline Targa 48 Gran Turismo





Manufacturer Provided Image: Fairline Targa 48 Gran Turismo Galley



Manufacturer Provided Image: Fairline Targa 48 Gran Turismo Cabin