



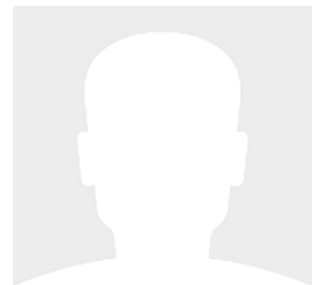
35' (10.00m) 2019 Bertram 35
Unknown Maryland United States



OVERVIEW

Manufacturer:	Bertram	Hull Material:	Fiberglass
Engines:	2 CAT	Cruise Speed:	Knots
Engine Model:	C7.1	Max Speed:	38 Knots
Engine HP:	505	Cabins/Heads:	1 / 1
Beam:	12' 5"	Fuel Type:	Diesel
Max Draft:	"	Fuel:	300 G (L)
Water:	50 G (L)		

Call for Price



Data Sheet

Category: Flybridge
Subcategory: Saltwater Fishing
Condition: New
Model Year: 2019
Beam: 12'5" (3.78m)
Min Draft: 2' 6" (0.76m)
LOA: 35' (10.00m)
Cabins: 1
Double Berths: 1
Heads: 1

Maximum Speed: 38 Knots
Knots
Fuel Type: Diesel
Hull Material: Fiberglass

Fuel Tank: 300 gal Fresh Water: 50 gal

Engines/Generators

Engine 1

CAT
C7.1
Inboard
505HP
376.58KW
Fuel: Diesel
Year: 2018
Location: Port

Engine 2

CAT
C7.1
Inboard
505HP
376.58KW
Fuel: Diesel
Year: 2018
Location: Starboard

Summary/Description

For Sale

On order...Still time to make factory selections..Sistership shown

The Bertram 35 is perfectly specified for cruising, fishing or wherever life's adventures take you. Leave your outboards behind and enjoy the safety, security and ride comfort of this CAT diesel powered micro-yacht.

Call today for delivery dates and opportunities

Specifications

- **Twin CAT C7.1 500 HP engines**
- **Cream Solid Surface counter tops**
- **Blue interior upholstery & Blue & White striped exterior upholstery**
- **Flag Blue Custom Hull Paint**
- **Custom Painted Boot Stripe - White with Toreador Red Pinstripe on Top**
- **Custom Bottom Paint - Black**
- **Propspeed**
- **Two LED Underwater Lights**
- **Bow Thruster**
- **Bow Pulpit w/ Maxwell anchor windlass and Chocks**
- **Arid Dry two Zone Bilge System (Engine room and forward bilge)**
- **Teak Varnished helm pod with single lever Palm Beach controls**
- **V-Cool window tinting**
- **Electronics package: Two Garmin 7616XSD MFD displays w/1 KW sounder, Cat interface & GPS antenna; GMR 424 XHD 2 open array radar, Gamin autopilot, CHiRP B275C-LH transducer**
- **Hardtop with three side enclosure**
- **Teak Cockpit Sole**
- **Teak Covering board**

- **Rupp single spreader Outriggers**
- **Upgrade to Palm Beach style controls with thruster**
- **Triple teak ladder back helm chairs**

Manufacturer Provided Description

It's been over five decades since the 31 was released, but the legend can still be seen taking to the seas. The Bertram 35 was built from that timeless foundation. With superior fishing capabilities and the innovative luxuries expected of our brand, taking the helm makes you a modern day captain driving the Bertram empire forward.

The Bertram 35, which exudes the original 31's soul, incorporates a beamier, longer hull design allowing for a spacious and comfortable interior. Projected to reach 40+ knots with twin 460-hp diesels. Engine access is through 2 engine boxes in the cockpit, which also doubles as mezzanine seating. It's customizable to be fully fish-rigged.

Disclaimer

The Company offers the details of this vessel in good faith but cannot guarantee or warrant the accuracy of this information nor warrant the condition of the vessel. A buyer should instruct his agents, or his surveyors, to investigate such details as the buyer desires validated. This vessel is offered subject to prior sale, price change, or withdrawal without notice.

















Manufacturer Provided Image: Manufacturer Provided Image