



# Peacekeeper

96' (29.26m) 2015 Sanlorenzo SL96  
Aventura Florida United States



## OVERVIEW

**\$4,799,000**

Manufacturer:	Sanlorenzo	Hull Material:	Fiberglass
Engines:	2 MTU	Cruise Speed:	25 Knots
Engine Model:	16V 2000M84	Max Speed:	28 Knots
Engine HP:	2216	Cabins/Heads:	4 / 5
Beam:	22' 2"	Fuel Type:	Diesel
Max Draft:	6' 4"	Fuel:	2800 G (10599.15 L)
Water:	502 G (1900.28 L)		



## Data Sheet

Category: Motor Yachts  
Condition: Used  
Model Year: 2015  
Documented Year: 2015  
Beam: 22'2" (6.76m)  
Max Draft: 6' 4" (1.93m)  
LOA: 96' (29.26m)  
Cabins: 4  
On Deck Master: Yes  
Heads: 5

Crew Sleeps: 3  
Maximum Speed: 28 Knots  
Cruise Speed: 25 Knots  
Fuel Type: Diesel  
Hull Material: Fiberglass  
Hull Shape: Planing  
Hull Warranty: None  
Air Conditioning: Yes

Stabilizers: Standard and Zero Speed  
Stabilizer Brand: CMC  
Bow Thruster: Yes  
Stern Thruster: Yes  
Fuel Tank: 2800 gal (10599.15 liters)  
Fresh Water: 502 gal (1900.28 liters)  
Holding Tank: 470 gal (1779.14 liters)  
Builder: Sanlorenzo  
Interior Designer: Marty Lowe Interiors  
HIN/IMO: SLZ00611F415  
In Stock: Yes

## Engines/Generators

### Engine 1

MTU  
16V 2000M84  
Inboard  
2216HP  
1652.47KW  
Fuel: Diesel  
Hours: 2050  
Year: 2015  
Location: Port

### Engine 2

MTU  
16V 2000M84  
Inboard  
2216HP  
1652.47KW  
Fuel: Diesel  
Hours: 2050  
Year: 2015  
Location: Starboard

### Generator 1

## Summary/Description

This timeless design is a classic product of the Sanlorenzo tradition. The SL96 harmoniously combines the elegant spaces of the Sanlorenzo planing fleet with the latest technological features and style.

This timeless design is a classic product of the Sanlorenzo tradition. The SL96 harmoniously combines the elegant spaces of the Sanlorenzo planing fleet with the latest technological features and style. The flybridge on the SL96 is unmatched in this sector of the yacht industry - a vast space dedicated to enjoying the sea with your fortunate companions, friends, and family is made possible by a generous aft garage for storing the tender. The shipyard's redundancy components within the engine room make her safe and reliable to travel with peace of mind throughout the United States, Bahamas and other quaint destinations in the western Hemisphere. Peacekeeper is the only American Spec 96 Sanlorenzo on the market.

## Specifications

### ENGINE INFORMATION

- Main Engines - Twin MTU 16V2000M84 @ 2,216 Hp/ea
- Additional engine control on port side

### BOW AND FLYBRIDGE FEATURES

- Bow area sofa with electric hi-low table and filler cushion
- Sail-cover style awning with removable stanchions for bow seating area
- Sail-cover style awning with removable stanchions on aft flybridge
- Flybridge island Boffi bar incorporated with Miele Teppan Yaki, ice maker fridge and sink
- Kenyon electric BBQ on flybridge
- Flybridge shower
- Treben Firenze Compo bridge leather helm seats
- Atlas flybridge electric davit system (owner used it for two Vespas), stowed in a custom teak sofa
- Portable, bracket mounted 40" TV for flybridge/cockpit
- Two electric hi-low tables and filler cushions in cockpit
- Paola Lenti exterior loose furniture

### EXTERIOR EQUIPMENT

- Teak decks throughout exterior
- Transom garage - holds up to a 13ft tender
- Brownies Third lung dive system in garage (compressor and accumulator tank in engine room)
- Extended, electro-hydraulic swim platform
- Carbon fiber Marquipt Sea Stairs
- Hydraulic swim ladder
- Eight enlarged hull-side windows
- Two Sea Smart retractable bow cleats
- Six underwater lights

## SALON AND GALLEY

- Electric opening salon door
- Electro-hydraulic opening salon terrace/balcony
- Custom salon coffee table has a 27" Lenovo touchscreen computer integrated into the table top
- Salon end table top flips open to reveal a storage and charging station for laptop/mobile phones
- Wet bar with dedicated stemware and bottle storage in salon
- Dining table (seats 7) converts to a console table when not in use
- Wood flooring on main deck and master stateroom
- Bleached Oak bulkheads
- Electric draperies throughout main and lower decks (except crew area)
- Galley outfitted by Boffi
- Miele appliances
- Two Miele professional washers and dryers

## ELECTRONICS AND COMMUNICATION

- Raymarine Diamond navigation electronics package
- KVH TracVision HD7 SAT TV antenna
- KVH TracPhone V3 voice and data antenna
- Direct TV
- CCTV with 4 cameras and DVR
- FLIR night vision camera with thermal vision and low light
- Kenwood stereo in salon, galley and pilothouse
- Samsung LED TVs throughout

## ACCOMMODATION

- Sleeps 9 guests and 3 crew
- On-deck master suite with Tempurpedic mattress
- Two VIP staterooms and one guest stateroom on lower deck, each with ensuite head
- Two VIP berths hinge up for additional storage
- Marble throughout all heads and guest lobby flooring
- Super Tuft carpeting in guest staterooms
- A fourth cabin on the lower deck is set up as a gym with Cybex ARC trainer machine, free weights, bench, massage table, two TVs, and Eco-soft rubber flooring

## ENGINE ROOM EQUIPMENT

- Electric engine oil change pump
- CMC electric stabilizers
- Bow and stern thrusters
- Tropicalized air conditioning system - 240,000 BTU
- Water maker - Sea Recovery 1400 US gallons/day
- Freshwater intake filtration system
- Ozone treatment on freshwater tank, A/C ventilation, and bilge areas
- Sludge tank converted into additional blackwater tank - 60 US gal

- Variable speed control fan system for engine room ventilation

#### ELECTRICAL EQUIPMENT

- Electrical system - 127/220V
- Generators - Two 55kW Kohler
- Shore power connections - Three 220V AC 100A, three-phase (two master + one slave). One connection in bow area.
- ASEA frequency convertor with seamless transfer
- CM8 aft Glendinning Cablemaster

### Disclaimer

The company offers the details of this vessel in good faith but cannot guarantee or warrant the accuracy of this information nor warrant the condition of the vessel. A buyer should instruct his agents, or his surveyors, to investigate such details as the buyer desires validated. This vessel is offered subject to prior sale, price change or withdrawal without notice.



Peacekeeper- Sanlorenzo SL96



Flybridge





Flybridge Seating



Flybridge



Flybridge



Salon





Salon



Salon



Guest Stateroom



Guest Stateroom





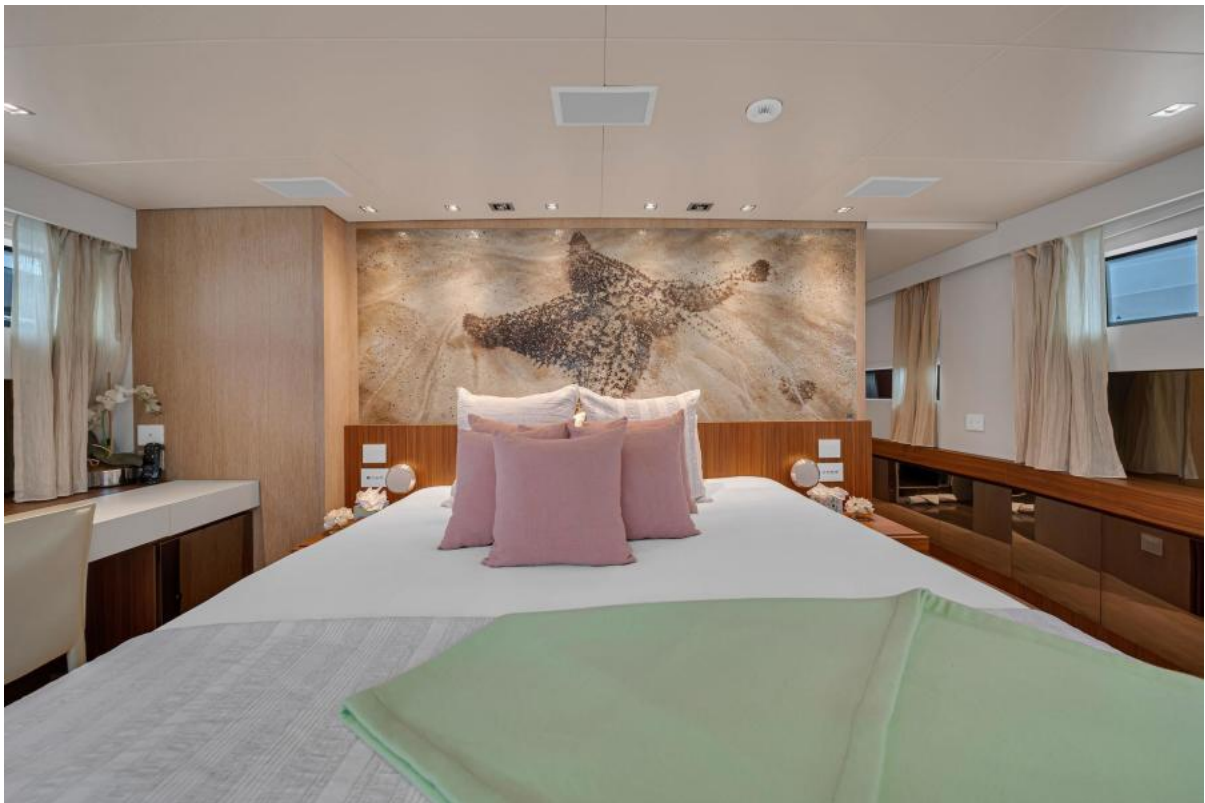
Guest Stateroom



Guest Stateroom



Guest Hall



Primary Stateroom





Primary Stateroom



Primary Stateroom



Pilot House



Gym