



MARINE GROUP
Yacht Sales, Brokerage
& Custom Construction



54' (16.46m) 2013 Hatteras 54 Convertible
Orange Beach Alabama United States



OVERVIEW

Manufacturer: *Hatteras*

Engines:	2 Caterpillar	Hull Material:	Fiberglass
Engine Model:	C-32	Cruise Speed:	
Engine HP:	1600	Max Speed:	
Beam:	17' 3"	Cabins/Heads:/	2
Max Draft:	4' 2"	Fuel Type:	Diesel
Water:	200 G (757.08 L)	Fuel:	1050 G (3974.68 L)

\$1,695,000



Larry Davis larryd@marinegrouppec.com

1-251-989-5787

Data Sheet

Category: Convertible Boats
Condition: Used
Model Year: 2013
Beam: 17'3" (5.26m)
Max Draft: 4' 2" (1.27m)
LOA: 54' 4" (16.56m)
Heads: 2

Fuel Type: Diesel
Hull Material: Fiberglass
Bridge Clearance: 13' 10"

Dry Weight: 67000 lbs
Fuel Tank: 1050 gal (3974.68 liters)
Fresh Water: 200 gal (757.08 liters)
Holding Tank: 100 gal (378.54 liters)
HIN/IMO: HATHE708F313

Engines/Generators

Engine 1

Caterpillar
C-32
Inboard
1600HP
1193.12KW
Fuel: Diesel
Hours: 1119
Year: 2013
Location: Port

Engine 2

Caterpillar
C-32
Inboard
1600HP
1193.12KW
Fuel: Diesel
Hours: 1116
Year: 2013
Location: Starboard

Summary/Description

This is a very nice 54 Hatteras GT. She has been very lightly used and the condition shows. She is well maintained by very knowledgeable service personnel, yacht maintenance companies and is owned by a caring and experienced Owner.

This is a very nice **54 Hatteras GT**. She has been very lightly used and the condition shows. She is well maintained by very knowledgeable service personnel, yacht maintenance companies and is owned by a caring and experienced Owner.

Well equipped and ready to fish or cruise. Reliable C-32 Power with all maintenance up to date.

Oct. 26, 2023: New Listing, Additional Details and Videos to Follow After the Lauderdale Boat Show

Manufacturer Provided Description

They say that every boat represents a compromise of some sort. The Hatteras 54 Convertible proves the exception to the rule thanks to her impressive speeds, shallow draft, soft ride and extensive list of standard amenities. Featuring a 4-foot, 2-inch draft and a convex hull design that revolutionized the Hatteras fleet, the 54 provides access to shallow ports and increased performance across all rpm ranges. With 1,650-hp diesel engines, the 54 cruises a comfortable 35 knots, burning just over 100 gallons per hour. Top speeds approach 40 knots. That's optimum performance by any measure. Thanks to her sophisticated design, solid construction and creature comforts, you can indeed have it all with the 54 Convertible.

Exterior Details

Fully Fishable Cockpit. The 126-square-foot cockpit features a mezzanine deck with padded seating to keep the crew comfortable and provide improved visibility of baits in the spread. Under the seat cushions lies storage for gear, bait, ice, and tackle, as well as a centerline access hatch to the engine room. An oversized transom door will accommodate the tournament winner, and an 80-inch fish box is positioned in the cockpit sole for quick access when the meat fish come calling.

Top-Notch Flybridge. A few steps up the portside ladder from the cockpit, the 150-square-foot flybridge features a pod-style helm with power-actuated console that opens and closes to keep all of your electronics well protected against saltwater intrusion and theft. Single-lever electronic controls are positioned for maximum ease of use and visibility, whether throttling up or backing down on a fish. Forward of the helm is an insulated drink box and two bench seats with rod storage beneath.

Convex Hull Shape. The 54's hull shape features a "warped" bottom with a sharp entry forward and highly variable deadrise that becomes nearly flat at the transom. The convexity of the bow lessens wave impact and results in an incredibly smooth ride in head seas. Flatter sections aft reduce water resistance, improving handling at low speeds and increasing stability while planing. Specially designed strakes that bisect the stagnation line (the point at which the water's surface meets the hull bottom once on plane) provide additional lift and improve tracking in all conditions. Double chines and a flared bow deflect spray out and away from the boat. There's simply no better ride in the industry.

Deep Propeller Pockets. Our hull tunnels, including those on the 54, are deeper than most, which reduces drag and allows for larger propellers to be tucked in tighter to the hull. That tight fit provides uniform containment around the blades and eliminates the slapping of water against the hull that typically comes with a flat bottom. It also helps accelerate the water through the blades for better performance and results in a shallower draft. The 54, in fact, draws an

enviable 4'2".

Interior Details

Sophisticated Salon. The 54's 195-square-foot salon features a genuine wood interior, custom L-shaped sofa, and modern entertainment center with a large flat-screen TV, surround-sound stereo system, DVD/CD player, and VCR. Attention to detail is evident in the slotted wood cornices that route our air conditioning and the wood blinds that complement the warm, rich interior ambiance. This is a place of refined elegance and relaxation — the perfect spot to unwind after a day on the water.

- 32" LCD TV
- Bose Lifestyle 35 home theater with AM/FM, CD/DVD, and surround sound speakers
- Fixed frameless windows with tinted safety glass
- DC LED lighting
- AC duplex outlet(s) with ground fault protection
- L-shaped lounge with rod storage, loose cushions, arm rests and double needle stitching
- Throw pillows
- Carbon monoxide detector
- Smoke detector
- HVAC control
- Polished stainless-steel threshold at salon door

Handsome Galley & Dinette. The fully equipped galley will delight onboard chefs with its natural wood cabinets, four-burner cook top, microwave/convection oven, garbage disposal, icemaker, and under-counter freezer and refrigerator drawer units. Storage is exceptional, with six 36-inch-deep cabinet drawers for provisions and cooking utensils. Practicality continues in the adjacent chart flat area and in the Amitico® vinyl-strip flooring, which provides the appeal of teak but is effortless to maintain. Opposite the galley and close at hand is an L-shaped dinette with extra storage space below the seat.

- Amtico vinyl flooring
- Microwave/convection oven covered by cabinet door
- DC LED lighting
- Genuine wood inserts to match interior finish on appliance fascia
- L-shaped dinette with storage under seat
- Solid-surface countertops with sink and storage cabinets made of finished wood
- Undercounter refrigerator and freezer drawer unit
- Four-burner ceramic cooktop
- Garbage disposal

Stately Staterooms. Thanks to a generous 17'3" beam, sleeping accommodations include three staterooms and two heads. The elegant master, located amidships, features a queen berth with cedar-lined storage underneath and a sliding pocket door for privacy. Air conditioning disbursement comes through fluted wood valances for uniform comfort. Wood nightstands and a dresser enhance the rich look and provide ample storage, while the flat-screen TV and stereo with CD player offer after-hours entertainment. The private master head includes a stall shower with seat, solid surface countertops, and easy-care Amtico® flooring, along with a wood cabinet, separate linen storage, and a mirrored vanity. Forward, the VIP stateroom boasts a walk-around island berth. Twin berths in the third stateroom will make a pair of guests, or the kids, feel right at home.

Master SR:

- Queen-sized berth with upholstered headboard and cedar-lined storage underneath



- Upholstered berth base
- HMC System 1 mattress, spread, throw pillows, pillows, pillow shams, mattress pad and sheets
- Cedar-lined hanging locker with doors, shelf and automatic light
- Nightstands with drawers
- Dresser with drawers
- 19" LCD TV
- Bose 3-2-1 GS with AM/FM and DVD/CD w/speakers
- Full-length mirror
- DC LED lighting
- DC low-voltage lights under berth
- Private access to head
- Smoke detector
- Carbon monoxide detector
- HVAC control

Master Head:

- Amtico vinyl flooring
- Fabric headliner installed on track system for service access
- Wallcovering
- Solid-surface countertop, backsplash, and side splash with integral sink
- Hardwood baseboards
- Stall shower with door and automatic sump pump
- Storage cabinet with mirror above sink
- Base cabinet with storage
- Towel bar
- Freshwater toilet
- 120 volt AC air freshener blower
- DC LED lighting
- AC duplex outlet(s) with ground fault protection
- Plexi mirror around upper cabinet
- Holding tank 3/4 full indicator lights

VIP Fwd SR and Head:

- Queen-sized tapered berth with upholstered headboard and cedarlined storage underneath
- HMC System 1 mattress, spread, throw pillows, pillows, pillow shams, mattress pad and sheets
- Cedar-lined hanging/storage lockers with automatic light
- Nightstands, port and starboard
- DC AM/FM stereo receiver with CD player and speakers
- Full-length mirror
- DC LED lighting
- AC duplex outlet(s) with ground fault protection
- Private access to head
- Screened overhead hatch with privacy cover
- Washer/dryer

Starboard Guest Stateroom:

- Twin berths with storage under outer berth
- HMC System 1 mattress, spread, throw pillows, pillows, pillow shams, mattress pad and sheets



- Double cedar-lined hanging locker with doors, shelf and automatic light
- Nightstand with drawers
- Full-length mirror
- DC LED lighting
- AC duplex outlet(s) with ground fault protection
- Private access to head
- HVAC control

Guest Head

- Amtico vinyl flooring
- Solid-surface countertop, backsplash, and side splash with integral sink
- Hardwood baseboards
- Stall shower with door and automatic sump pump
- Storage cabinet with mirror
- Base cabinet to match interior finish with storage
- Towel bar
- Freshwater toilet
- 120V AC air freshener blower
- DC LED lighting
- AC duplex outlet(s) with ground fault protection
- Plexi-mirror around upper cabinet
- Holding tank 3/4 full indicator lightsatt

Electronics and Navigation

- (3) Garmin 8215 15" Touchscreen Chartplotters
- Garmin High Definition 72NM 6' Array Radar
- Garmin In-Hull Transducer, 2kW
- Garmin Smartpilot Autopilot GHP20
- XM Satellite Weather for Chartplotters
- (3) Raymarine CAM100 Day/Night High Resolution Engine Room Cameras
- ACR Remote Spotlight
- FLIR Night Vision Camera
- KVH Tracvision M7 SAT TV
- Latham Camera in Cockpit with Recording Apparatus and Salon TV Display
- ICOM VHF Radio
- Chartplotter Connection to Salon TV

Additional Equipment List

- Pipewelders Hardtop With Full Enclosure and Flybridge AC
- **Electric Teaser Reels**
- **Vetus Bow Thruster, 24V w/Independent Battery Bank and Charger**
- **Vetus Stern Thruster, 24V w/independent Battery Bank and Charger**
- **1200gpd Watermaker, Aquimiser**
- **Ice Chipper, Eskimo**
- Offshore Commander 6 Person Liferaft



- Flybridge Teak Accent Strip
- Port Cockpit In-Deck Fishbox Livewell
- Bow Deck Freshwater Washdown
- Cockpit Under-Coaming Lights
- Bow Stateroom TV/DVD/Stereo Entertainment Center
- Starboard Stateroom TV/DVD/Stereo Entertainment Center
- Salon Aft Entry Amtico Flooring
- Seavision Underwater Lights (2)
- Bow Sunpad

Flybridge

- Systems monitor with programmable logic controller read-out, visual and audible signals for exhaust temperature, alternator, battery voltage, high bilge water, fire warning in engine compartment, fire extinguisher discharge in engine room, AC power loss, smoke detectors, carbon monoxide detectors, and holding tank 3/4 full monitor
- Polished anodized welded aluminum rails and stanchions
- Two bench seats with vinyl-covered polyfoam cushions and storage underneath
- Control station with all necessary switches and dimmable lighted instrument panel
- Compass with dimmable light
- Pod console with custom wheel and single-lever clutch and throttle controls (electronic) with emergency back-up, engine synchronization, and trolling valve control switches
- Hydraulic power-assisted steering
- Two (2) adjustable helmchairs
- DC AM/FM stereo receiver with CD player and speakers
- Neutral interlock switches allowing engine to start in neutral only
- Fuel level gauges
- Rod storage space in port bench seat
- Top-loading insulated drink box
- Additional storage areas beneath seat(s) and console
- Air Conditioning
- Electric Teaser Reels

Cockpit

- Seating with cushions across upper mezzanine
- Transom door
- Fiberglass cockpit boarding step box with storage
- Sliding glass door to deckhouse
- Stereo speakers with volume control
- DC LED overhead lights under flybridge overhang
- Molded-in grab rails on cabin side
- Freshwater wash down outlet
- Shore water connection with pressure-reducing valve
- Bait and Tackle Center with 3 drawers
- 5.4-cubic-foot bait freezer, port mezzanine
- Insulated storage box in mezzanine
- Storage tub, lower port mezzanine



- Removable 80" fish box with macerator, flush in deck
- Storage in steps to deckhouse with chill box in top step
- Aluminum mounting plate laminated in deck for fighting chair
- Polished stainless-steel rod holders, flush mount, set of 4

Engine Room

- AC fluorescent lights
- DC lights
- DC exhaust blowers
- FM200 fixed fire extinguishing system for engine compartment with automatic and remote manual controls, plus audible and visual discharge signals
- **One 21.5kW freshwater-cooled Electronic Quiet Diesel Onan generator(D) with shock mounts, seawater strainer, remote start, fuel/water separator, hour meter, exhaust water separator and sound enclosure**
- Bronze/chrome-plated ball-valves through-bolted in solid fiberglass on all underwater through hull fittings with electrical bonding throughout
- 24-volt DC oil changing system for engines, gear and generator with Hatteras patented quick disconnect
- Electric fuel priming pumps, engines
- Painted polyurethane engine room and bilges
- Isolated discharge sea chest
- 1" stainless-steel steering tie bar with pivoting self aligning ball joint connection at all cylinder and tie bar connections
- Pick-up sea chests
- Start / stop switches and hour meter

Disclaimer

The company offers the details of this vessel in good faith but cannot guarantee or warrant the accuracy of this information nor warrant the condition of the vessel. A buyer should instruct his agents, or his surveyors, to investigate such details as the buyer desires validated. This vessel is offered subject to prior sale, price change or withdrawal without notice.



MARINE GROUP
Yacht Sales, Brokerage
& Custom Construction









MARINE GROUP
Yacht Sales, Brokerage
& Custom Construction







MARINE GROUP
Yacht Sales, Brokerage
& Custom Construction





MARINE GROUP
Yacht Sales, Brokerage
& Custom Construction





MARINE GROUP
Yacht Sales, Brokerage
& Custom Construction





MARINE GROUP
Yacht Sales, Brokerage
& Custom Construction





MARINE GROUP
Yacht Sales, Brokerage
& Custom Construction











MARINE GROUP
Yacht Sales, Brokerage
& Custom Construction









MARINE GROUP
Yacht Sales, Brokerage
& Custom Construction















MARINE GROUP
Yacht Sales, Brokerage
& Custom Construction









MARINE GROUP
Yacht Sales, Brokerage
& Custom Construction





MARINE GROUP
Yacht Sales, Brokerage
& Custom Construction











MARINE GROUP
Yacht Sales, Brokerage
& Custom Construction

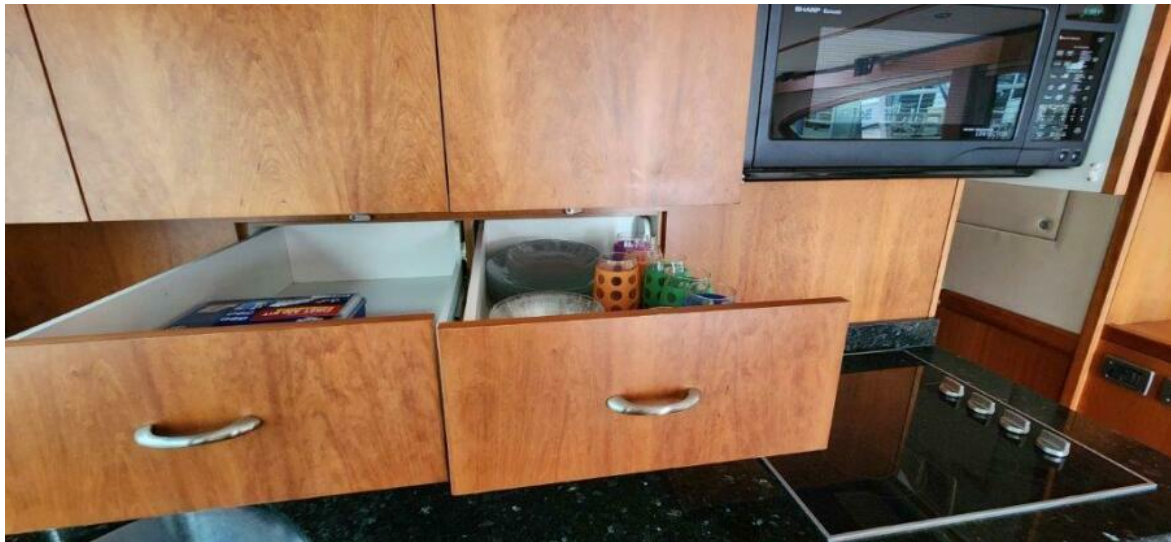


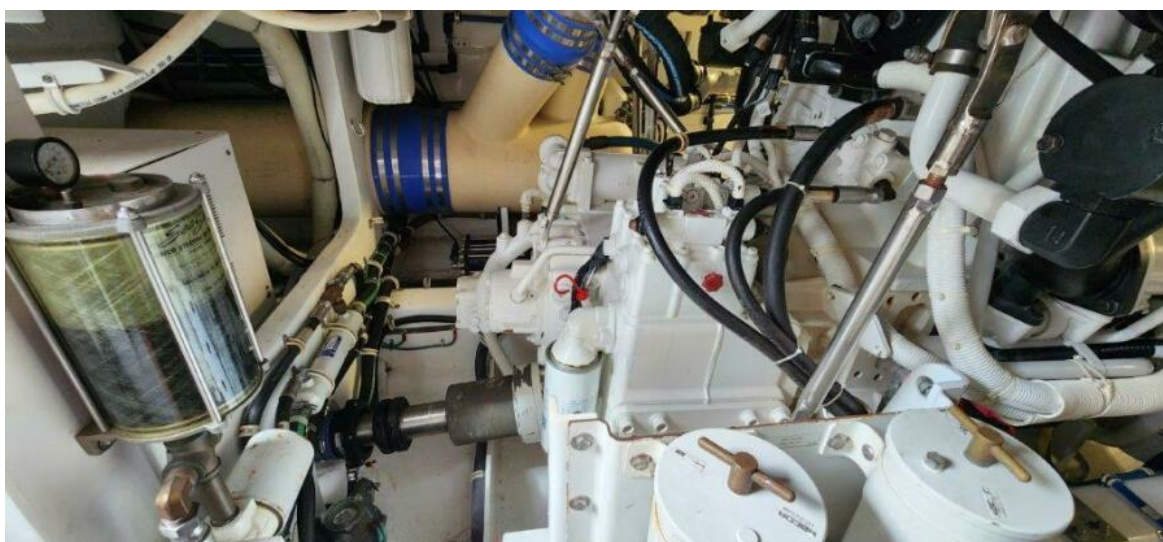
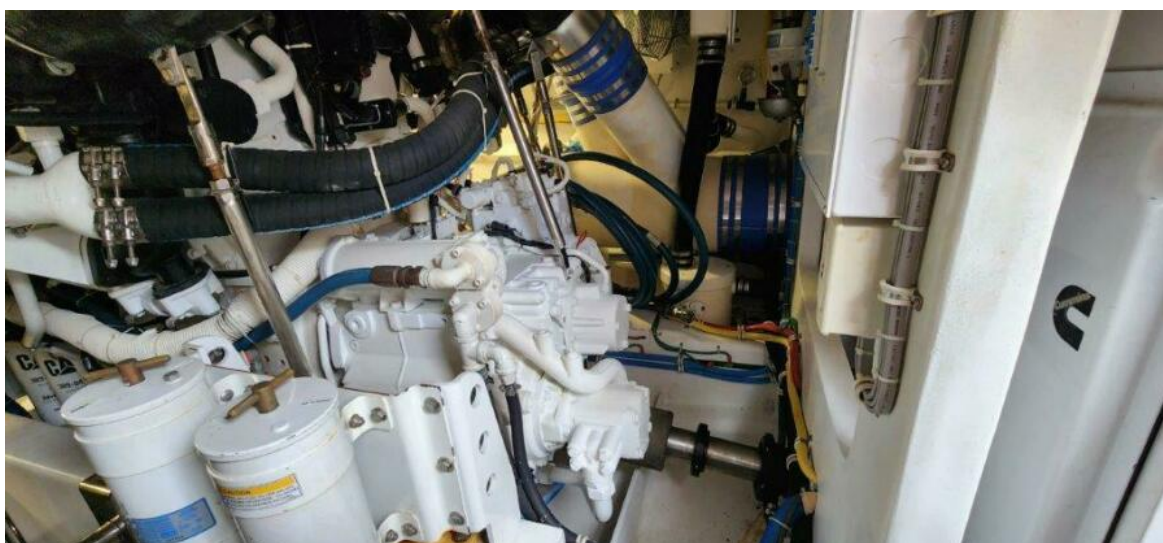






MARINE GROUP
Yacht Sales, Brokerage
& Custom Construction

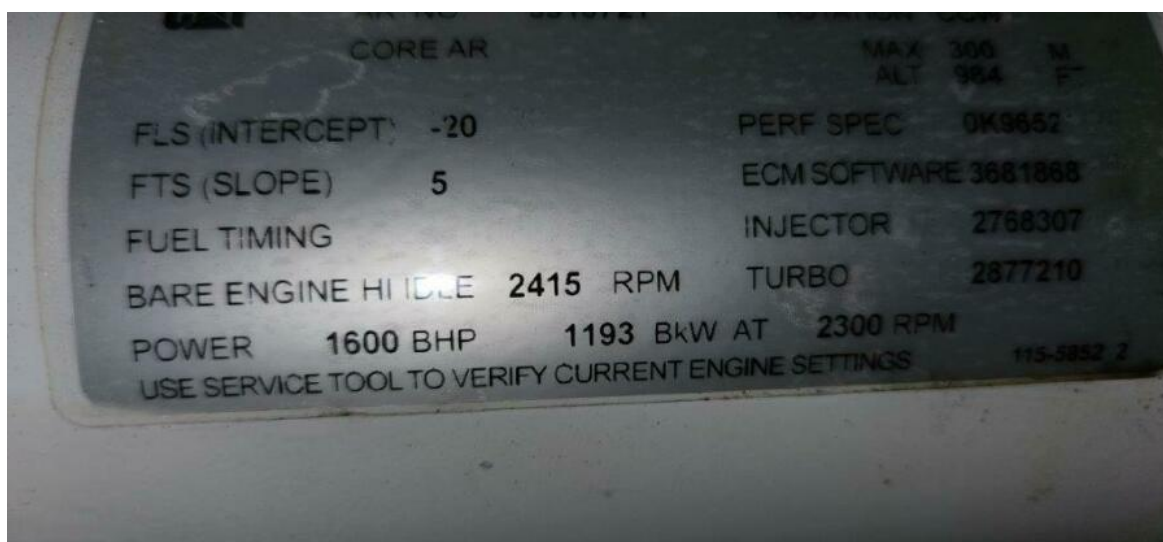


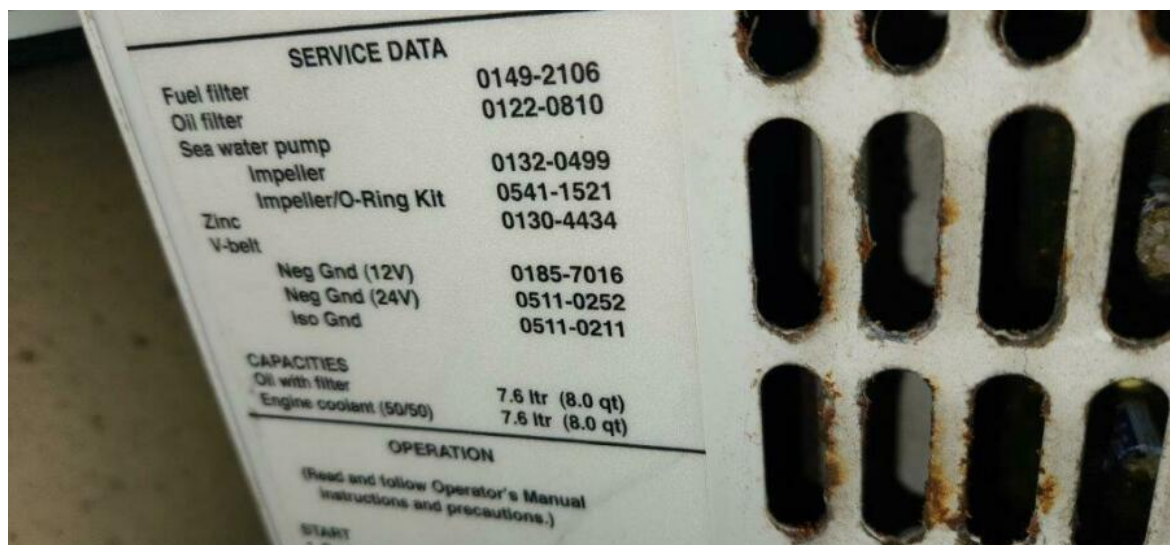










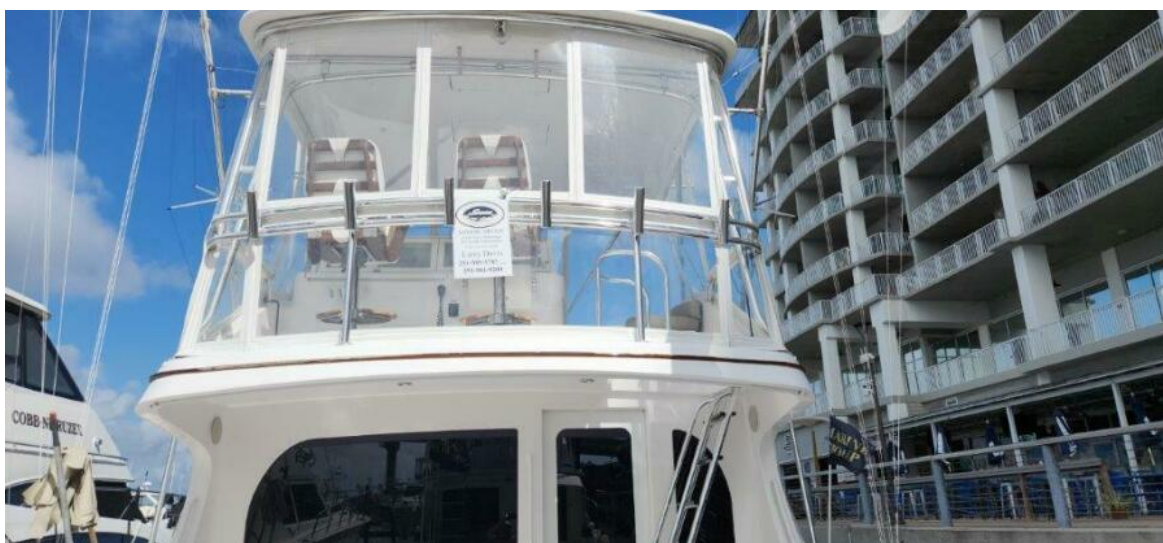








MARINE GROUP
Yacht Sales, Brokerage
& Custom Construction





MARINE GROUP
Yacht Sales, Brokerage
& Custom Construction









MARINE GROUP
Yacht Sales, Brokerage
& Custom Construction





MARINE GROUP
Yacht Sales, Brokerage
& Custom Construction

