



A1A

72' (21.95m) 2001 Jim Smith Custom Convertible
Stuart Florida United States



OVERVIEW

\$3,295,000

Manufacturer:	<i>Jim Smith</i>		
Engines:	2 MTU	Hull Material:	Cold Molded
Engine Model:	16v2000	Cruise Speed:	
Engine HP:	1800	Max Speed:	
Beam:	20' 0"	Cabins/Heads:	4 / 3
Max Draft:	5' 8"	Fuel Type:	Diesel
Water:	340 G (1287.04 L)	Fuel:	2125 G (8044 L)



Jamie MacGregor jamie@macgregoryachts.com

561-762-5492



Data Sheet

Category: Sport Fishing
Condition: Used
Model Year: 2001
Beam: 20' (6.10m)
Max Draft: 5' 8" (1.73m)
LOA: 72' (21.95m)
Cabins: 4
Heads: 3

Fuel Type: Diesel
Hull Material: Cold Molded

Dry Weight: 100000 lbs
Fuel Tank: 2125 gal (8044 liters)
Fresh Water: 340 gal (1287.04 liters)
HIN/IMO: JMS0000000000

Engines/Generators

Engine 1

MTU
16v2000
Inboard
1800HP
1342.26KW
Fuel: Diesel
Hours: 2800
Location: Port

Engine 2

MTU
16v2000
Inboard
1800HP
1342.26KW
Fuel: Diesel
Hours: 2800
Location: Starboard

Generator 1

Phasor
27KW
27KW
Hours: 5700

Generator 2

Phasor
27KW
27KW
Hours: 5700



Summary/Description

A1A is an incredible masterpiece of a perfect recipe. It is a thing of beauty and design inside and out. It offers great performance and efficiency along with an extremely good ride in rough water! She is built to travel, and has all the ingredients to do so.

A1A is an incredible masterpiece of a perfect recipe. It is a thing of beauty and design inside and out. It offers great performance and efficiency along with an extremely good ride in rough water! She is built to travel, and has all the ingredients to do so. From her beautiful woodwork to her timeless sex appeal, this boat is not only amazing, it's special! It's a pleasure to represent her. Please come see for yourself.

Vessel Walkthrough

A1A is a great representation of a large, pedigree custom sport fishing machine. Entering the massive salon is truly a masterpiece of hand crafted wood work. This area, as well as the whole interior, is surrounded by lavish, hand rubbed satin teak, which makes this salon very rich and warm. Over to port, there is an oversized custom leather sofa, which has storage below, along with a beautiful cocktail table that accents this area also. Over to starboard, there's 2 swivel occasional chairs along with the pop up flat screen TV. This area also shares a full bar, entertainment system, and additional storage. Moving forward to the galley area, you'll find tremendous counter space and enormous amounts of storage. This galley offers high end appliances and custom granite stone work for gourmet experience. Moving down the companionway to starboard, there's a generous over/under guest stateroom which offers over sized berths and amazing amounts of storage. This stateroom shares a Jack & Jill style full head and shower with the 2nd criss/cross bunk guest stateroom just forward to port. This stateroom also offers great storage, and comfort. To the port side is the huge VIP stateroom which offers side by side berths. This area is quite voluminous and has great storage for extended travels. The VIP full head and shower has great room for getting ready and storage as well. In the companionway, forward houses a full size washer and dryer along with a large linen closet. All the way forward in the bow offers the enormous Master stateroom. This area is wrapped in beautiful teak which is absolutely stunning. It features a full walkaround King berth, full entertainment center, and tremendous storage. The Master Head and shower also demonstrates huge volume, and gives great storage and a luxurious feel. The high level of perfection in it's fit and finish is beyond impressive. From the spectacular interior woodwork to mirror finished bilges, A1A is quite special.

System Updates

- 2/11/2012 Replace Port & Starboard Long Blocks with all Moving Parts
- 2/11/2012 Send Both Gears Out to be Gone Through and Freshened Up
- 1/1/2017 Paint Entire Boat at Jarrett Bay
- 2/17/2017 Replace Covering Boards
- 2/15/2017 Replace Shafts
- 4/1/2017 Update All Interior Soft Goods and Replace Couch
- 5/11/2017 Replace AC Chillers
- 6/27/2018 Replace Port Generator Electrical End
- 3/8/2018 Replace Both Port & Starboard Exhaust Risers
- 5/1/2019 Purchase New 5 Blade Veem Wheels
- 10/17/2020 Replace Cockpit Ice Machine
- 4/20/2022 Replace All Air Handlers
- 5/1/2023 Install Furuno Omni Sonar



Salon

Very spacious Salon area, extremely well appointed and beautiful custom wood and joiner work. This area has the ability to offer plenty a room for true long distance travels.

- Custom Leather Sofa with Storage Below
- Built In End Tables to Accompany the Sofa
- Custom Cocktail Table
- 2 Large Occasional Chairs
- Full Custom Bar
- Ice Machine
- Pop Up Pioneer 42" Smart TV
- Pioneer Elite AV Receiver System
- KVH Mini VSAT
- Panasonic Cordless Phone Base Station
- Plenty of Great Storage for Extended Travels

Galley

This Gourmet Galley area offers fantastic counter space for creating meals and entertainment. Surrounded by custom satin finished teak and beautiful granite, this galley is a treat. Large amounts of storage is also key to this galley for long range capabilities.

- Jenn Air Oven
- Meile T712C Ceramic Cooktop
- Whirlpool Trash Compactor
- Fisher & Paykal Dishwasher
- Kitchen Aid Microwave
- Cadresso Coffee Maker
- Cuisenart Toaster
- Stainless Sink
- Custom Built In Refrigeration

Companionway

- Asko W6222 Washer
- Asko 712C Dryer
- Large Linen Closet

VIP Machine Tunnel

- (3) Headhunter Mach 5 Pumps
- (1) Atlantic Marine 14 Gallon Hot Water Heater
- Great Storage

Forward Machine Tunnel

- 10 Gallon Hot Water Heater for Master Area



Starboard Guest Aft Stateroom

Very nice and roomy stateroom, the bunks are quite large, and beautiful teak accents this area.

- Over/Under Oversized Berths
- Great Storage with Both Drawers and Hanging Locker

Starboard Guest Full Head & Shower

This Head area is a Jack & Jill design which is shared by both Starboard Guest Staterooms. It's a very generous area and offers a great sized shower with good storage.

Starboard Guest Forward Stateroom

Upper and Lower Oversized Criss/Cross Berths. Roomy and very comfortable area, great storage and teak accents.

- Criss/Cross Oversized Berths
- 19" Insignia Flat Screen TV
- Great Storage with Both Drawer Storage and Hanging Locker

Port VIP Guest Stateroom

Huge Side by Side Stateroom Layout. Berths are Oversized, lots of storage below. Surrounded by Beautiful Satin Teak gives this a very Calm and Cozy feel. Storage is tremendous and extended stays are comfortable and easy in this area. The VIP Full Head & Shower are ensuite, and offers a large Shower and Sink area to get ready for your day.

- Side by Side Oversized Berths
- Flat Screen TV with Stereo System
- Offers Tremendous Storage

Master Stateroom

This Master Stateroom is absolutely Enormous, and very well planned out. Complimented by lavish satin Teak wood throughout, it gives a very relaxing feel. This area features a Full Walkaround King Size Berth with storage below. Forward in this room, houses a full Make Up area for the ease of getting ready. There's a huge amount of storage in this Stateroom, which is all extremely useable space. This is a very exquisite Stateroom, very Nice! The Master Head is very Spacious and offers a very large shower and sink Space. Lots of storage is provided for extended traveling.

- Full Walkaround King Berth
- Huge Amounts of Storage
- Panasonic Flat Screen TV
- Full Stereo System
- Dish Network Satellite Bow
- Storage Below Deck, which offers Great Storage, and also Houses the 10 Gallon Hot Water Heater



Cockpit

Huge cockpit area, with beautiful teak cockpit and covering boards, along with a Full Teak Varnished Bulkhead. Starboard side next to the salon door houses the Gaggenau as well as 2 large Tackle Drawers. Large amounts of storage for additional tackle and supplies are provided in large Spaces in the Mezzanine. There are 2 Huge Freezers and a large Drink box also in the Mezzanine area. This is a Fishing Machine which offers both private fun fishing, or the most competitive Tournament fishing available.

- Gaggenau VR 421 Grill
- Garmin GNX 20 Display
- Both 12 & 24 Volt Outlets
- Huge Fish Box with Eskimo Ice Dump
- In Deck Live Well
- Full Merritt Fighting Chair

Bridge

The Bridge area is incredibly big. It offers tremendous seating, and storage. The Bridge is very well laid out, which makes it very functional. Visibility is a key factor and is perfect from all angles. She offers a beautiful teak helm station.

- Pipewelders Hydraulic Riggers
- 2 Myia Epoch X9 Teaser Reels
- 3 Blue Water Helm Chairs
- Sidepower Hydraulic Bow thruster
- Full EZ2CY Enclosure
- Drink Box

Electronics

- Furuno Omni Sonar
- New Starlink System
- ACR 100 Search Light
- (3) Garmin GPSMAP 8622
- (2) Garmin GSD 26 Sounder Module 3KW Chirp
- Garmin Fantom 4' Radar & Pedestal
- (2) Standard Horizon Quantum GX5500S
- AIS 600 Class B AIS Black Box w/ GPS
- GXM 52 Sirius/XM Receiver
- UD750 Fusion Head Unit
- (2) AP44 Autopilot Controller
- Garmin GPSMAP 7608
- TXL-25S-7 Low Emission 25KW 7' Antenna with 20m
- Simrad NSO Evo2 Marine Processor Unit
- Simrad OP50 Remote Controller

Tower



- GARMIN 8612 UNIT
- SIMRAD AP 22 Auto Pilot
- VHF

Deck & Hull

- Full Paint Job 2017 at Jarrett Bay Boat Works
- Huge Anchor Locker with Fresh Water Spigot
- Maxwell Hydraulic Windless

Engine Room

Very nice area, displaying professional care and maintenance. This area has great room and access to all Machinery. Her beautiful fit a finish and quality engineering shows her pedigree.

- M90 16V2000 1800hp 2800 Hours SMOH
- 2 27KW Phazor Generators
- Hydraulic Power Steering System
- Charles 5000SP Battery Charger
- Panther Air Compressor for Air Door
- Dometic EI540D Ice Maker
- (2) Charles Isoboost 50
- (2) Fil-Rite Transfer Pumps
- Aqua Air 6 Ton Chiller System
- Sea Recovery Aqua Whisper SRC-1500 Water Maker
- Delta T Engine Room Ventilation
- Kidde Fm-200 Fire Suppression System
- Duvac 2 Power Management Isolator

Mechanical Disclaimer

Engine and generator hours are as of the date of the original listing and are a representation of what the listing broker is told by the owner and/or actual reading of the engine hour meters. The broker cannot guarantee the true hours. It is the responsibility of the purchaser and/or his agent to verify engine hours, warranties implied or otherwise and major overhauls as well as all other representations noted on the listing brochure.

Disclaimer

The company offers the details of this vessel in good faith but cannot guarantee or warrant the accuracy of this information nor warrant the condition of the vessel. A buyer should instruct his agents, or his surveyors, to investigate such details as the buyer desires validated. This vessel is offered subject to prior sale, price change or withdrawal without notice.

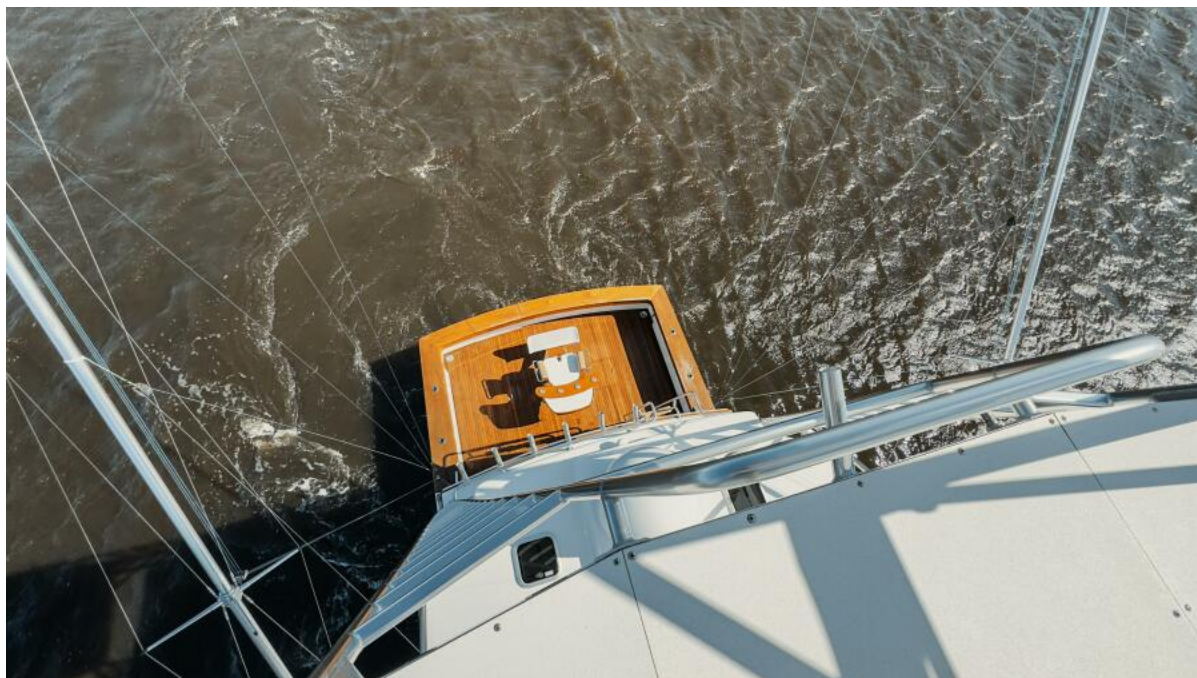




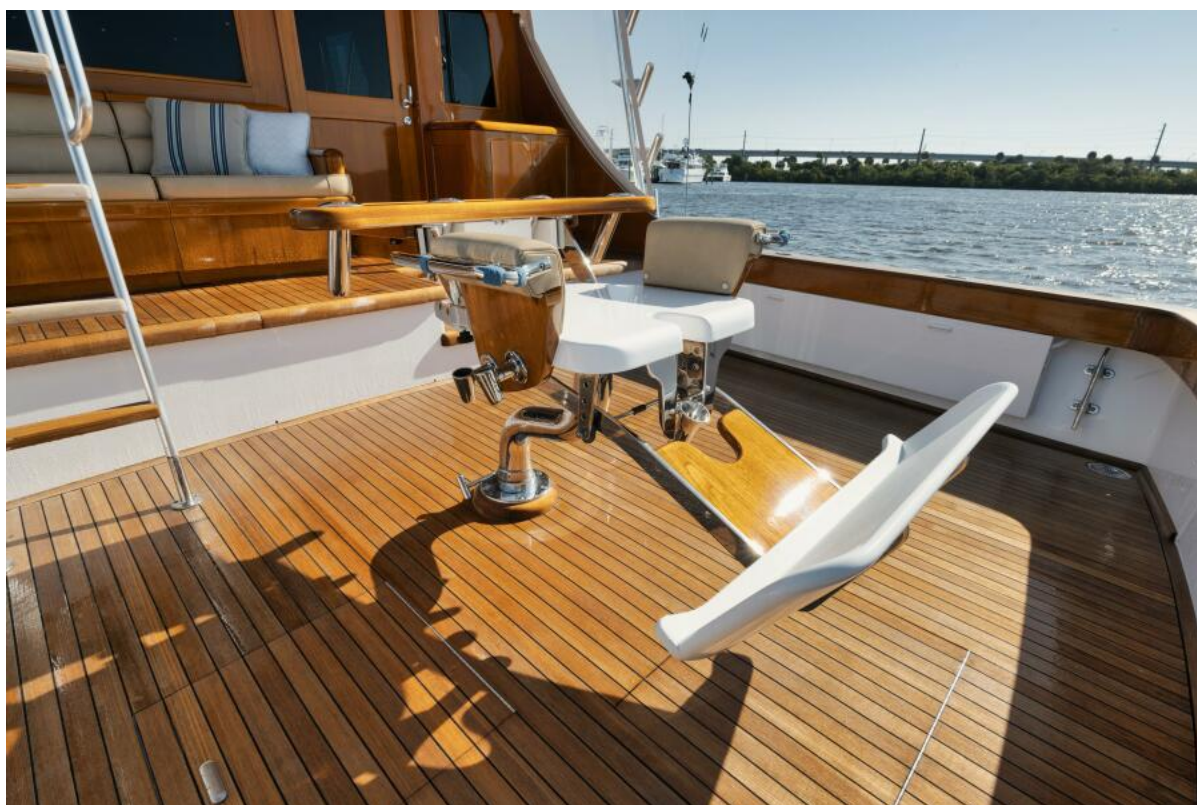




Tower



Tower



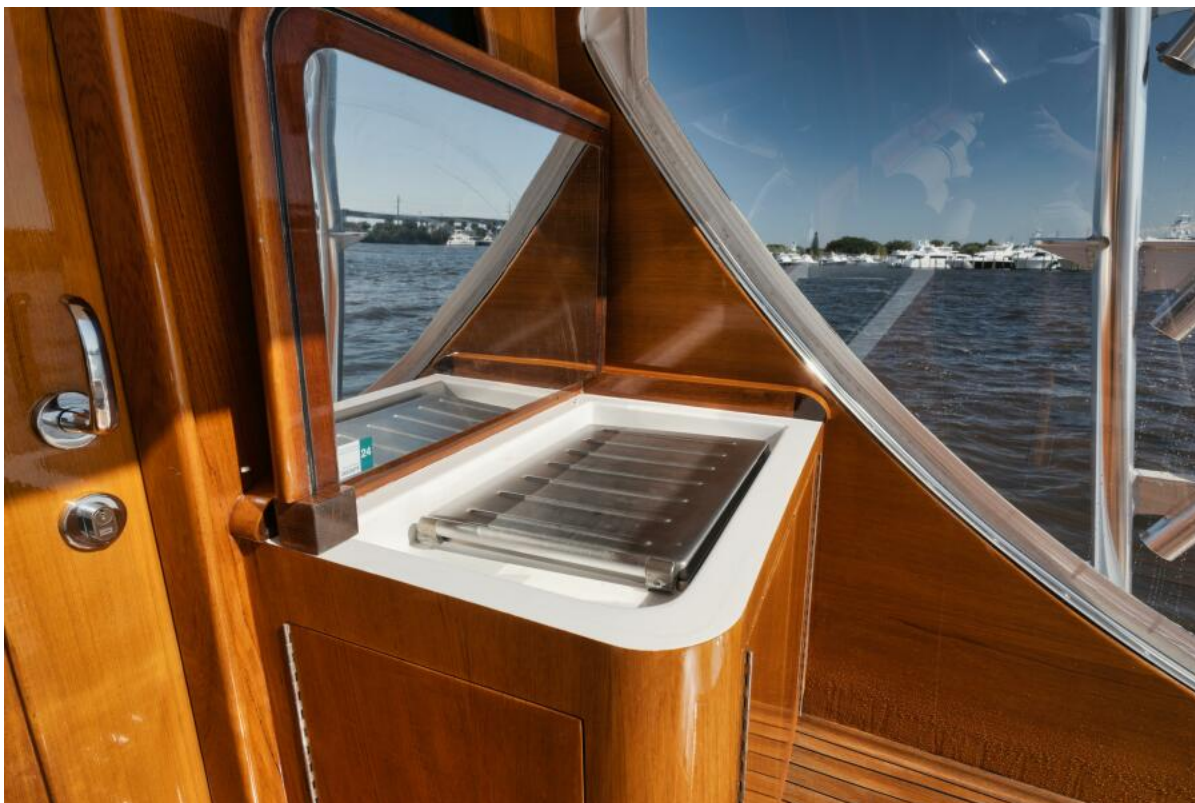
Cockpit



Cockpit



Cockpit



Cockpit



Bridge



Bridge



Bridge



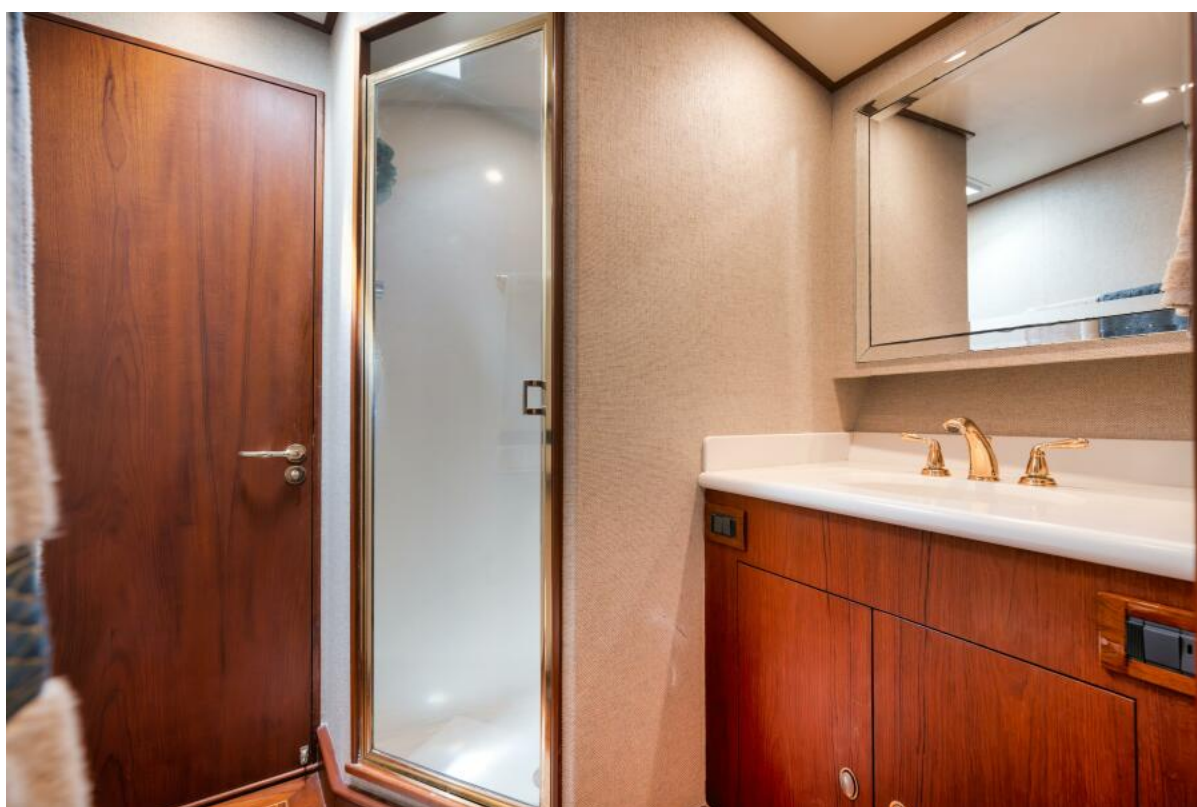
Bridge



Bridge



Aft Guest Bunk Room



Shared Head



Forward Guest Bunk Room



VIP Stateroom



VIP Head



Master Stateroom



Master Stateroom



Master Stateroom Head



Salon



Salon



Salon



Salon



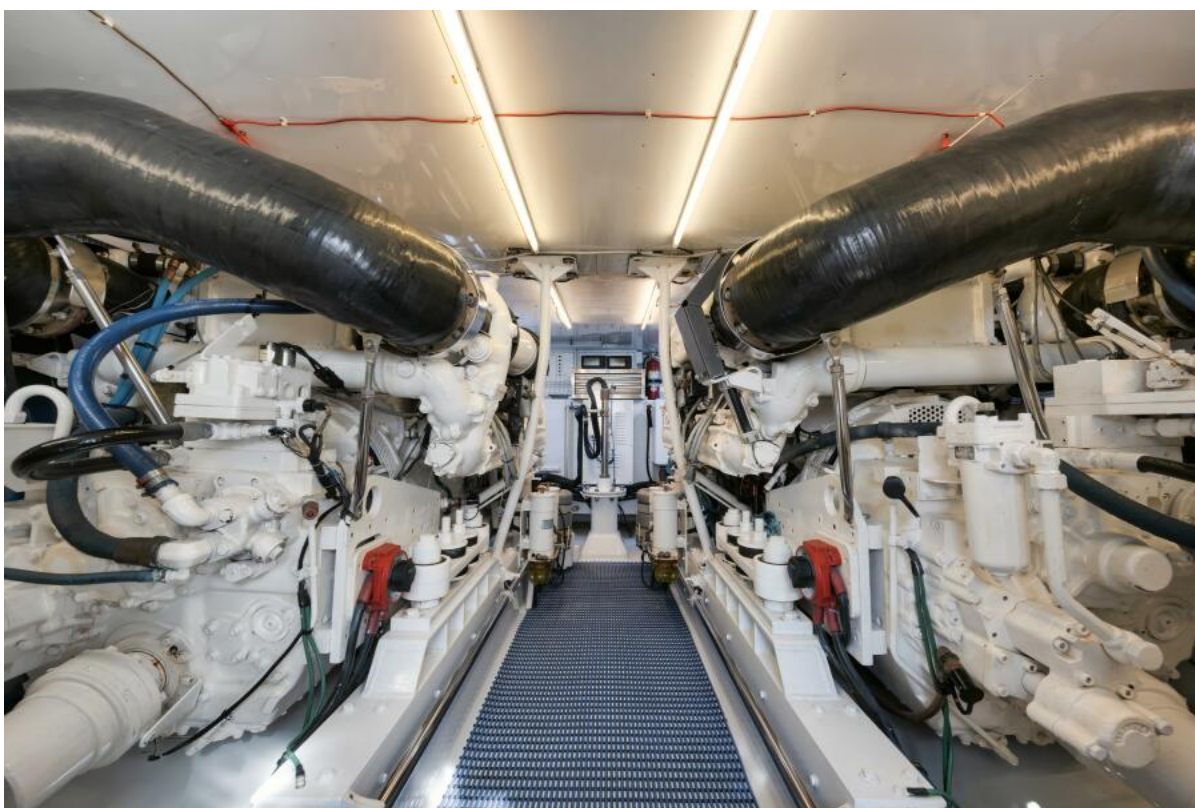
Galley Area



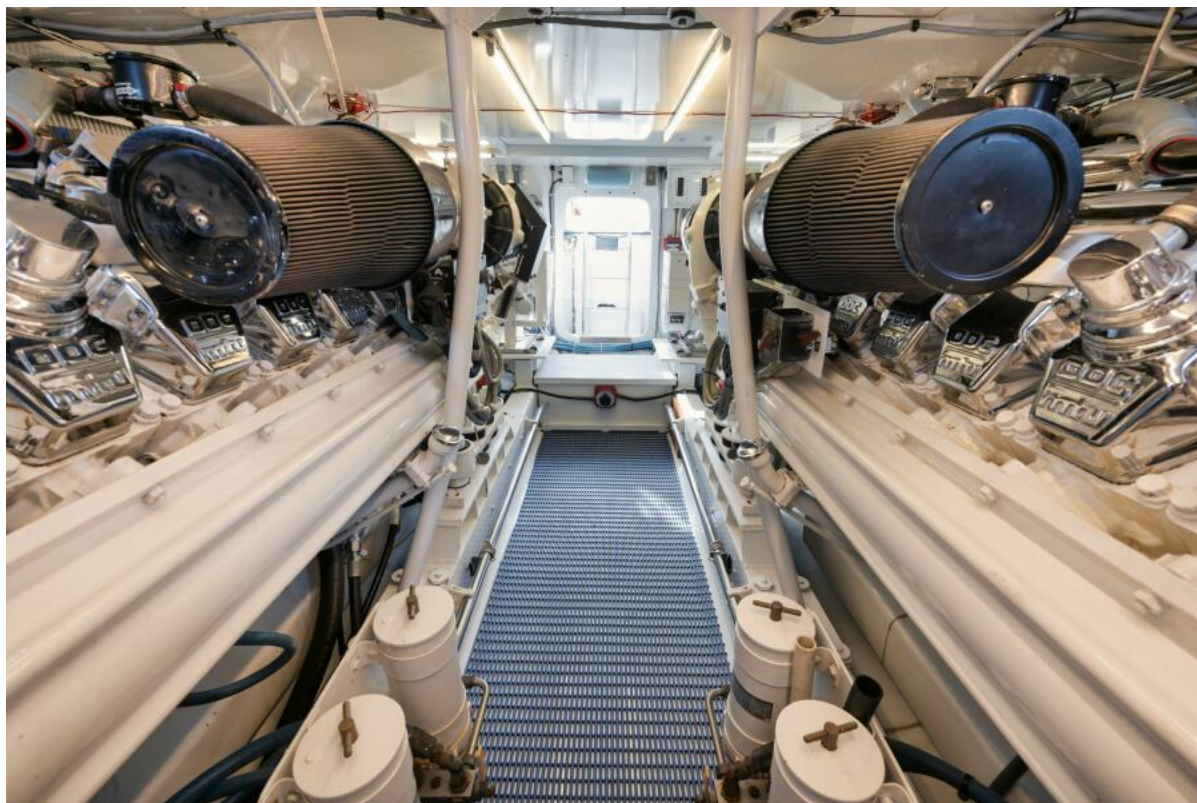
Galley Area



Galley Area



Engine Room



Engine Room