



Whiskey Kilo

66' (20.12m) 2004 Hines-Farley Custom Convertible
Charleston South Carolina United States



OVERVIEW

\$2,495,000

Manufacturer:	<i>Hines-Farley</i>		
Engines:	2 MTU	Hull Material:	Composite
Engine Model:	16V2000	Cruise Speed:	35 Knots
Engine HP:	2000	Max Speed:	43 Knots
Beam:	18' 10"	Cabins/Heads:	3 / 3
Max Draft:	6' 0"	Fuel Type:	Diesel
Water:	200 G (757.08 L)	Fuel:	1600 G (6056.66 L)





Data Sheet

Category: Sport Fishing
Subcategory: Convertible Boats
Condition: Used
Model Year: 2004
Beam: 18'10" (5.74m)
Max Draft: 6' (1.83m)
LOA: 66' (20.12m)
Cabins: 3
Heads: 3

Maximum Speed: 43 Knots
Cruise Speed: 35 Knots
Fuel Type: Diesel
Hull Material: Composite
Bridge Clearance: 5' 10"

Fuel Tank: 1600 gal (6056.66 liters)
Fresh Water: 200 gal (757.08 liters)
Holding Tank: 10 gal (37.85 liters)
HIN/IMO: RTY66008H504

Engines/Generators

Engine 1

MTU
16V2000
Inboard
2000HP
Fuel: Diesel

Engine 2

MTU
16V2000
Inboard
2000HP
Fuel: Diesel



Summary/Description

Whiskey Kilo shows absolutely perfect. She performs with a 35-knot cruise and has a ride like no other. This is a great opportunity for any high-end custom boat buyer.

Whiskey Kilo shows absolutely perfect with unparalleled fit and finish along with her stellar performance and sea keeping abilities. This 66' was an extremely high-tech build and carried a cost over 6 million dollars to build in 2004. Anyone looking for an incredible 66' custom boat should not over look this opportunity.

Vessel Walkthrough

Entering the large salon, your attention is immediately grabbed by the beautiful custom Anigre wood interior. It is also accented by exquisite neutral colored, hand picked marble counter tops. The L-shaped leather sofa is to port and to starboard is the entertainment center which houses a 55" Samsung LED flat screen television which elevates with the touch of a button. Moving forward to port is the dinette area which has its own 30" LG LED flat screen television. To starboard is the galley area featuring Sub Zero refrigeration, a microwave/convection oven, and a 3-burner inductive cooktop. This area has been designed to maximize space for entertaining with a newly added island design (March 2019) featuring custom countertops, bar storage, new freezers and updated outlets. The galley also consists of a sink, ice maker, and ample storage for extended travels throughout.

Moving forward, down the companionway to port is the guest stateroom featuring over/under berths that are very generous in size with plenty of storage and it has access to its own head and shower.

Moving slightly forward to starboard you will find the huge master stateroom with a walkaround queen bed. It has stunning custom woodwork along with great storage and closet space. The oversize head and shower features custom onyx stone work.

To port is the washer / dryer and across to port is more storage and a sub panel.

All the way forward is the VIP stateroom which features 3 large bunks, over / under to starboard and a single to port. This area has fantastic storage and its own full head and shower.

The whole boat features an off the chart stereo and media center.

Updates 2020 - 2018

2020

- Foredeck Painted
- Bottom Completely Sanded and All Old Paint and Material Removed and One Coat of SeaHawk Tuff Stuff Primer Applied
- Two Coats SeaHawk Biocop TF 1205-10GWL Black
- New Barnacle Barrier (2 Coats) and Black Window (2 coats) Applied to all Running Surfaces
- Props Peceived New Prop Speed Coatings
- New Spot Light iIstalled
- Breaker Panel Updated
- Forward Lighting Updated in Heads



- Teak Cleaned and Sanded
- New Fresh Water Pump
- New A/C Units Throughout the Boat with the Exception of the Cockpit

2019

- New LED Lighting Throughout
- New Headliner
- New Wall Coverings Throughout
- New Carpet Throughout
- New Holding Tank System Installed
- New Custom Island in Galley
- New Custom Freezers in Cockpit
- All Teak Stripped, Sanded, and Brought Back to New
- New Galley Freezers
- New Marine Exhaust Risers
- New Starboard Generator Motor
- New Chiller Plate Added to Drink Box
- New Membranes in Watermaker
- New Auto Fresh Water Flush in Watermaker
- New LED Spreader Lights Forward and Aft
- New Custom Anigre Flooring During Refit of Island Galley
- New Cooktop in Galley
- New Mezzanine Cushions
- Crestron Processor
- Crestron Programming for iPad Control, Controls All Audio / Visual and Lighting

Salon

This area boasts beautifully rich Anigre woodwork that is book matched to perfection. It is also accented by custom marble work to give this area a very high pedigree feel.

- Electric Salon Door
- L-Shaped Custom Leather Sofa with Full Storage Underneath - Newly ReUpholstered
- Scotsman Ice Maker Between Sofa and Dinette
- Full Length L-Shaped Counter Top to Starboard with Pop-Up 55" Samsung LED Flat Screen Television
- Carpet - NEW 2019
- Overhead Liner - NEW 2019
- LED Lighting with Lite Touch - NEW 2019
- Release Table with Storage Built to Match Custom Anigre Woodwork Throughout - NEW 2019

A/V Equipment:

- Crestron Controls Programmed for iPad Control: Lighting; Shades; FX Lighting; Audio Sources (DVD, SAT TV, Navigation Sources, Xbox, Cameras, XM Weather, XM Music Sources)
- Crestron Pro 2 Control Processor - NEW
- Full Surround Sound with (2) Subwoofers
- Denon Receiver
- Lite Touch Controlled Lighting
- Color Kinetics Color Lights Above Window Shades
- Apple TV



- Apple Mac Mini
- 55" Samsung LED TV with Access to SAT TV/DVD Player, All Navigation Sources, Ships Computer, XM Weather, Security System
- 30" LG LED Flat Screen TV with Access to SAT TV/DVD Player, All Navigation Sources, Ships Computer, XM Weather, Security System
- Pantages Multi-Channel Power Amplifier
- Crestron Switcher
- (5) DirecTV Receivers

Galley

- New Island Design with Sink, (2) 2-Drawer Sub-Zero Refrigerators, (1) Sub-Zero 2-Drawer Freezer, Storage Drawers Port and Starboard with Custom Liquor and Glassware Storage, and a Translucent Lighted Quartz Counter Top (2019)
- Wolf Induction 3 - Burner Cooktop (2019)
- Sharp Carousel Microwave Convection Oven
- Wine Glass Storage
- Built-In Cleaning Supply Storage and Pull Out Trash Bin
- 4-Drawer SubZero Refrigeration (Starboard Unit Replaced 2019 with New Magnetic Release System)
- Abundance of Storage
- New LED Lighting

Dinette

- Oversized Dinette Area Wrapped with Beautiful Ostrich Skin Leather
- 30" LG LED Flat Screen TV above Dinette with Storage Area Behind

Companionway

- Custom Anigre Wood Floors
- Washer / Dryer
- Forward Remote Breaker Panel Access Along with Closet Storage
- Access to Engine Room Under Stairs
- Hatch Access to Pump Room, Holding Tank, and Storage
- LED Lighting

Master Stateroom

Accented by lavish Anigre wood throughout, including spectacular wood floors. A full walkaround queen berth to center with great storage below. To starboard features two large closets with four oversized drawers. The master head area features a large shower with custom glass and a painted wood door, exquisite marble countertops along with great storage.

- Walkaround Queen Berth with Storage Below
- (2) Closets
- Full Vanity with Mirror and (4) Large Drawers
- 22" LCD TV with Full Surround Sound, SAT TV / DVD Player / XM Radio
- Full Size Head with Shower
- LED Lighting

VIP Stateroom



Features three oversized berths - over/under style berths to starboard and to port, one single berth with tremendous storage below. Tremendous closet storage along with four large drawers and additional compartments. The VIP head is spacious with great storage and accented by beautiful marble tops.

- (3) Oversized Bunks
- 17" LCD TV / SAT TV / Radio
- Hatch Access to Under Floor Bilge/Storage Area
- Rope Locker / Anchor Line Storage Area
- Full Head with Shower
- Closet Storage to Port and Starboard
- LED Lighting

Guest Stateroom

Features oversized over/under berths along with a large hanging locker and an abundance of drawer storage.

- (2) Bunks
- Access to Full Sized Head with Shower in Companionway
- Small Closet Storage
- Drawers
- LED Lighting

Cockpit

The oversize cockpit is very impressive with everything organized for extended excursions.

- NEW Teak Deck with Mezzanine Seating Area (Newly Reupholstered Cushions) with (2) Freezers and Engine Room Access
- Teak Covering Boards
- Aft Bulkhead Varnished and Clear Coated (2019)
- Mezzanine Polar Bay A/C Vents, Port and Starboard
- NEW Custom Built Freezers (2019)
- Starboard Mezzanine Seating has Tackle Drawers and Storage Underneath
- DrinkBox under Mezzanine with NEW Chiller Plate (2020)
- (10) JBL Audio Speakers
- (2) In-Deck Fish Boxes - Portside Fish Box Dumps Ice From Eskimo Ice Machine
- Release Marine Fighting Chair Refinished (2020)
- 4-Foot Storage Lockers Under Covering Boards, Port and Starboard, with Delta T Intake Vents
- NEW Redesigned Scupper System for Extremely Fast Drainage
- Cockpit Gunnels
- Fresh Water Washdown on Port and Starboard Side (Starboard Side New 2019)

Flybridge

- Full EZ2CY Eisenglass Enclosure
- Repainted Non-Skid Deck
- Release Marine Helm Chairs New 2019) and Cushions Replaced (2021)
- Freshwater Washdown (2019)
- Miya Epoch US-20R Teaser Reels
- Hydraulic Outriggers

Electronics and Navigation



- ACR 600 Spotlight
- Furuno 2125 25kW Radar Commercial Grade

Updated 2015:

- Garmin GSD 26 Remote Digital Sounder - CM599 LW HW 3kW Chirp Transducer
- (2) Garmin 8215 15" Glass Bridge GPS Multi-Function Displays
- (2) Garmin 8212 12" Multi-Function Displays
- Garmin GHP20 with Smart Pump GRF10 Auto Pilot
- Garmin GMR 404 x HD 4' Array - 4 kW Radar
- (3) Icom M604 VHF Radios
- KVH HD7 Satellite TV System
- Compass

Tower

- Compass
- Garmin 8212 12" Multi-Function Display with Autopilot Control
- Single Lever Controls
- Freshwater Washdown

Deck and Hull

- Bow Pulpit with Removable Ultra Anchor
- Front Mask Repainted (2018)
- Foredeck Repainted (2020)
- Toe Rail and Cap Rail Refinished (2021)
- Windlass with Removable Stainless Steel Pulpit - NEW
- Vetus Electric Bow Thruster with Throttle Control
- Bow Deck Non-Skid Paint Walkway Around Perimeter of Toe Rail
- Faux Transom
- Gold Boot Stripe
- New Underwater Lights (2018)

Engine Room

The engine room is absolutely perfect with custom Awlgrip paint throughout and custom Marlin Blue painted engines.

- (2) MTU M91 16V2000hp Engines - 3,000 Service Completed 2017
- (2) 20kW Northern Lights Generators (Starboard Generator has New Motor 2019)
- All New AC Systems Throughout (Except Cockpit) (2020)
- Fire Suppression System
- Camera System
- Toolboxes Above Generators
- Oil Exchange System
- Delta-T System
- Fresh Water System has (2) Headhunter Pumps In-Line for Backup
- Veem Props 35" x 45"
- Spare Set of Props
- 3 1/4" Shafts
- LED Lighting



Aft Engine Room Compartment and Pump Room

- New Water Makers, Inc Membranex (2019)
- New Auto Fresh Water Flush on Water Maker (2019)
- New Freshwater Pump (2019)
- Eskimo Ice Machine
- (4) CruisAir Units
- High Volume Live Well Pump
- 12 & 24 Volt Battery Chargers
- Atlas Shore Power System
- Small Air Compressor
- Separ Fuel Polishing System

Broker Remarks

Whiskey Kilo shows absolutely perfect with unparalleled fit and finish along with her stellar performance and sea keeping abilities. This 66' was an extremely high-tech build and carried a cost over 6 million dollars to build in 2004. Anyone looking for an incredible 66' custom boat should not over look this opportunity.

Disclaimer

The company offers the details of this vessel in good faith but cannot guarantee or warrant the accuracy of this information nor warrant the condition of the vessel. A buyer should instruct his agents, or his surveyors, to investigate such details as the buyer desires validated. This vessel is offered subject to prior sale, price change or withdrawal without notice.

Mechanical Disclaimer

Engine and generator hours are as of the date of the original listing and are a representation of what the listing broker is told by the owner and/or actual reading of the engine hour meters. The broker cannot guarantee the true hours. It is the responsibility of the purchaser and/or his agent to verify engine hours, warranties implied or otherwise and major overhauls as well as all other representations noted on the listing brochure.



Salon



Salon



Salon



Galley



Dinette



Galley



Dinette



Companionway



Guest Stateroom



Guest Head



Master Stateroom



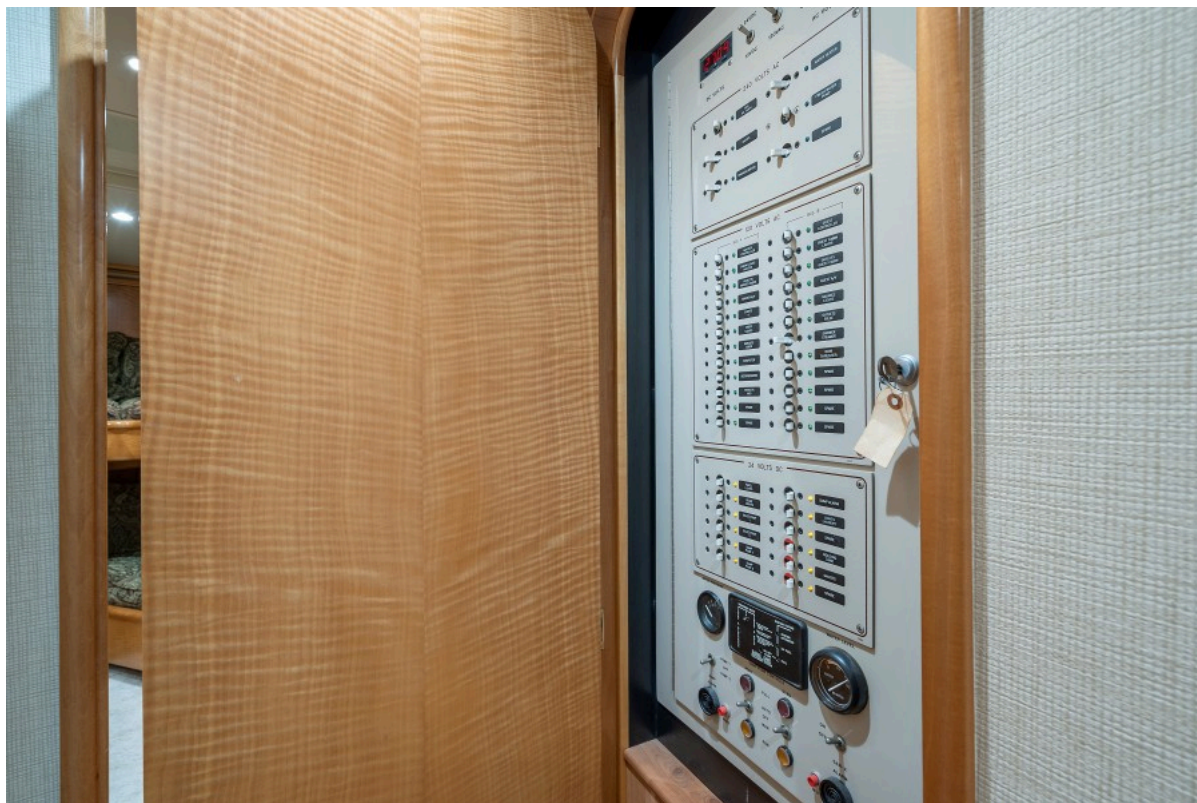
Master Head



VIP Stateroom



Companionway



Companionway



Cockpit



Cockpit



Cockpit



Cockpit



Flybridge



Flybridge



Flybridge



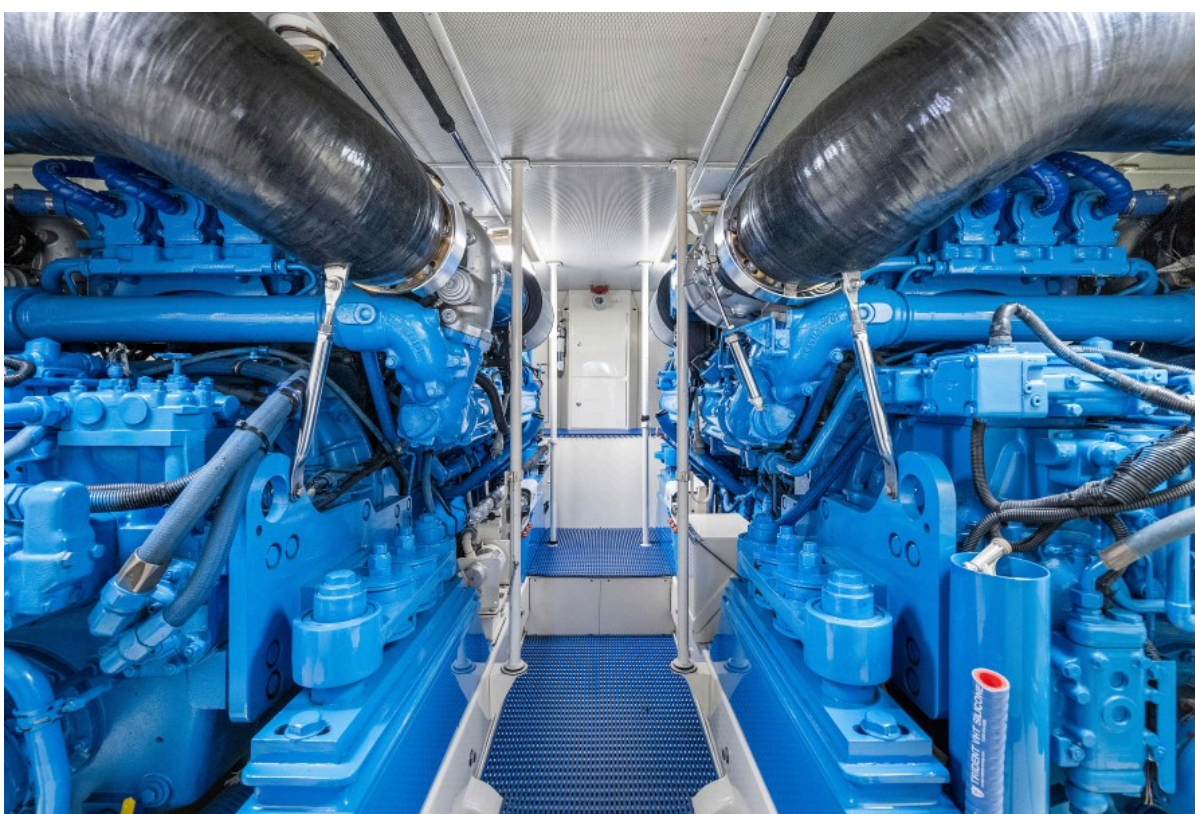
Flybridge



Flybridge



Flybridge



Engine Room



Engine Room



Engine Room



















