



47' (14.33m) 2023 Beneteau Oceanis 46.1
Palm Beach Florida United States



OVERVIEW

\$561,295

Manufacturer:	<i>Beneteau</i>		
Engines:	1 Yanmar	Hull Material:	Fiberglass
Engine Model:	4JH57 CR SD	Cruise Speed:	
Engine HP:	80	Max Speed:	
Beam:	14' 9"	Cabins/Heads:	3 / 2
Max Draft:	"	Fuel Type:	Diesel
Water:	98 G (370.97 L)	Fuel:	53 G (200.63 L)



Data Sheet

Category: Cruisers

Condition: New

Model Year: 2023

Beam: 14'9" (4.50m)

LOA: 47' 11" (14.61m)

Cabins: 3

Heads: 2

Fuel Type: Diesel

Hull Material: Fiberglass

Dry Weight: 23356 lbs

Fuel Tank: 53 gal (200.63 liters)

Fresh Water: 98 gal (370.97 liters)

HIN/IMO: BEYFS410K223

Engines/Generators

Engine 1

Yanmar

4JH57 CR SD

Inboard

80HP

59.66KW

Fuel: Gas/Petrol

Summary/Description

The Oceanis 46.1 offers a perfect combination of style, efficiency, and comfort. Her stepped hull increases the volume below significantly without affecting her seakeeping abilities. It is a straightforward boat to sail doublehandedly thanks to the configuration of her deck and cockpit, and a wide

Available In Store: Palm Beach

Oceanis 46.1

Yanmar 4JH57 CR SD

The Oceanis 46.1 offers a perfect combination of style, efficiency, and comfort. Her stepped hull increases the volume below significantly without affecting her seakeeping abilities. It is a straightforward boat to sail doublehandedly thanks to the configuration of her deck and cockpit, and a wide range of custom options and trims guarantees that she will be customized to meet the expectations and needs of any sailor.

****Please note, stock images are used. Some features depicted may not be included.***

We're proud to showcase Beneteau Sailboats at our Palm Beach showroom.

STANDARD EQUIPMENT

CONSTRUCTION

- Design in accordance with European Directive requirements and according to CE certification
- Monolithic polyester contact hull
- Monolithic contact structural counter mould (Fabrics - resin) bonded to the hull
- Injected deck construction in glass fiber and Saerform foam sandwich, covered with non-slip diamond pattern
- Cast iron keel fixed with bolts and stainless steel backing plates
- Twin rudders hung with stainless steel stock
- White coloured hull - Grey metal hull graphics
- 8 Hull portholes DECK EQUIPMENT

RIGGING

- Anodized furling mast (Z-Diffusion) deck stepped with in-mast furling system, 2 Aft swept spreaders
- Anodised aluminum boom
- Cathedral type single-strand stainless steel standing rigging
- Split backstay
- Rigid boom vang with tackle
- Self-tacking jib with on-deck furler
- 2 Stand Up mainsheet blocks on the coachroof
- 1 Self-tacking jib track with traveller
- All lines brought back to the helm stations (except boom topping lift and genoa halyard)
- Complete running rigging: Mainsail halyard, Genoa halyard with cleat on mast, Boom topping lift with cleat on mast, Mainsheet,
- 1 Self-tacking jib sheet
- 6 Clutches
- Halyard covers
- 2 Flag halyards

WINCHES

- 1 Self tailing winch (H40.2 STA) at each helm station
- 1 Aluminum Speed Grip winch handle
- 2 Winch handle holders SAILS (Elvström)
- Furling mainsail Dacron, with UV protection Natural, horizontal cut,
- Self-tacking jib Dacron with UV protection Natural, horizontal cut

MOORING LINES - MOORING

- Self-draining chain locker - Clench bolt - Hatch cover
- Single roller stainless steel bow fitting with offset roller
- 12 V - 1 000 W vertical electrical windlass - Remote control
- 6 Aluminum mooring cleats, Length: 400mm / 15 3/4" - Stainless steel chafing plate

SAIL LOCKER

- Access by polyester cover, Passage width: 65 x 50 cm / 2'2" x 1'8"

- Stainless steel ladder
- Shelving unit

SAFETY ON DECK

- 1 Open stainless steel pulpit
- 2 Stainless steel pushpits
- 2 Stainless steel handrails on coachroof
- 1 Lifebuoy support bracket
- Welded ring on pushpit for flag
- Double guard lines and stainless steel stanchions, 650mm / 2' 2"
- Emergency ladder on pushpit

COCKPIT

- Self-draining cockpit
- 1 Watertight compartment under cockpit benches & 1 Wet locker
- 1 Locker in cockpit bottom
- 1 Gas compartment under port helmsman seat
- Natural solid wood slatted on cockpit benches
- Natural solid wood slatted helm seats with starboard storage locker
- Foldaway helmsman foot chock
- 2 Steering wheel consoles:
 - Stainless steel steering wheels (900mm diameter / 2'11")
 - Anthracite leather covering
 - Steering gear at the helm station
 - Steering line transmission system
 - Stainless steel handrail
- 2 Deck access for emergency tiller
- 1 Emergency tiller
- 1 Steering compass on the cockpit table
- Engine throttle and control panel on starboard
- Cockpit table, stainless steel frame, 2 natural solid wood extension leaves, 4 cup holders, stainless steel handrail, waterproof USB socket, life raft stowage
- 1 Cockpit shower with mixer tap

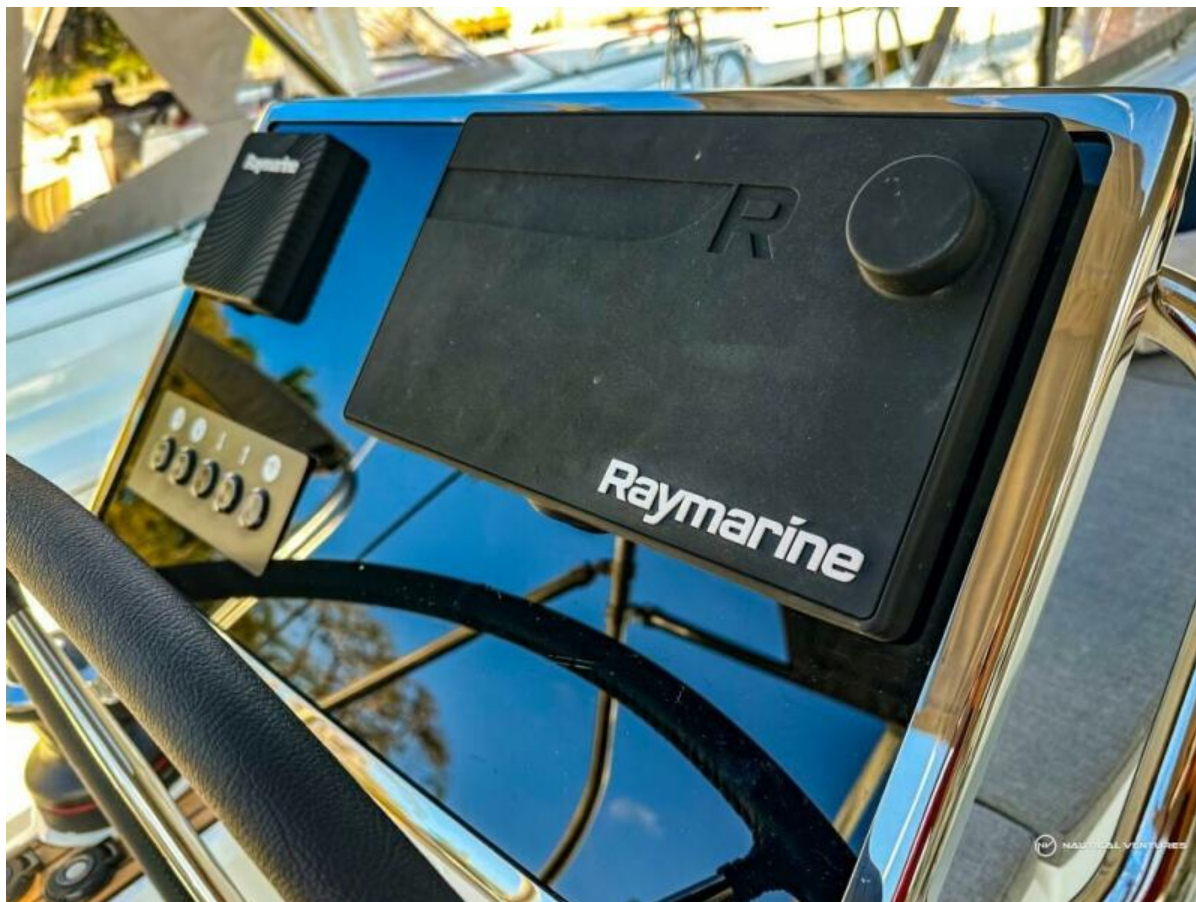
- 1 PMMA companionway door in 2 removable parts - Sliding hatch made of PMMA

SWIM PLATFORM / AFT TRANSOM

- Fully opening transom, convertible to bathing platform (2,65m x 0,80m / 8'8" x 2'7")
- Intermediate cockpit access step
- Manual control opening
- Natural solid wood slatted on swim deck
- 1 Stainless steel, removable bathing ladder with dedicated stowage in the cockpit





































NAUTICAL VENTURES



NAUTICAL VENTURES



