



# Dharma

53' (16.15m) 1978 Hatteras 53 Yacht Fisherman  
North Miami Beach Florida United States



## OVERVIEW

**\$169,000**

Manufacturer:	Hatteras		
Engines:	2 Detroit Diesel	Hull Material:	Fiberglass
Engine Model:	8V71 TI	Cruise Speed:	
Engine HP:	450	Max Speed:	
Beam:	15' 10"	Cabins/Heads:	3 / 3
Max Draft:	"	Fuel Type:	Diesel
Water:	239 G (904.71 L)	Fuel:	825 G (3122.96 L)





## Data Sheet

Category: Motor Yachts  
Condition: Used  
Model Year: 1978  
Beam: 15'10" (4.83m)  
Min Draft: 4' 6" (1.37m)  
LOA: 53' (16.15m)  
Cabins: 3  
Heads: 3

Fuel Type: Diesel  
Hull Material: Fiberglass  
Bridge Clearance: 19' 2

Dry Weight: 55000 lbs  
Fuel Tank: 825 gal (3122.96 liters)  
Fresh Water: 239 gal (904.71 liters)  
Holding Tank: 165 gal (624.59 liters)  
HIN/IMO: HATBJ3180778

## Engines/Generators

### Engine 1

Detroit Diesel  
8V71 TI  
Inboard  
450HP  
335.56KW  
Fuel: Diesel  
Hours: 790  
Location: Port

### Engine 2

Detroit Diesel  
8V71 TI  
Inboard  
450HP  
335.56KW  
Fuel: Diesel  
Hours: 797  
Location: Starboard

## Summary/Description

CLEAN AND READY TO GO !

**Twin Detroit Diesel 8V 71 TI Engines**

**Three Stateroom Three Head Layout**

**September 2023 Insurance Survey Available**

**An economical 9.5 knot cruise burns 10 gallons.**

**825 Gallon Fuel Capacity**

“dharma” is a **1978 Hatteras 53 Yacht Fisherman** with a functional original factory cockpit. “dharma” is hull number **318** of one of the most sought after 53 Motor Yacht models by Hatteras Yachts. One noted fact about this boat is she is very much in **its original condition** and not drastically altered, modified, or modernized by any of the previous owners. The current knowledgeable owner has kept that in mind but enjoyed the boat for local use in **Florida with his family and friends**. All Detroit Diesel engine services are done by an experienced Detroit Diesel mechanic who has 35 plus years of Detroit Diesel experience. Engine Oil and Filter change was just completed in February 2024. Maintenance and repair records, all new parts installations, etc. etc. for the past three years are documented and available upon request by potential buyers. An Insurance Survey report (September 2023) is also available.

August 2023 the boat was hauled out for running gear repairs to replace cutlas bearings, rudder shaft seals and bearings, replace all zincs and apply Petit Prop Coat on running gear. Mechanically, engines are in good running condition and the hour meter readings for **Port 790** and **Starboard 797**. At some point in the past, engines were overhauled but the current seller does not have any records. The original Onan 15 Kw generator is **not working**.

For **Classic Yacht Enthusiast** the boat is ideal for a restoration project. Also, the desirable 3-stateroom/3-head layout is ideal for anyone looking for a **Home Away from Home** to get away from the cold in the winter months. The current knowledgeable Hatteras owner has enjoyed her with his family and now ready to part with her.

**Notable Service and Repairs are listed below.**

Shown by appointment.

**Exclusions: Owner's Personal Items.**

## Notable Repairs and Services

**2024 February**

---

Robert Weera    rweera@intermarineboats.com

1-954-665-3234

- Engine Oil and Filter change

### **2023 September Running Gear Repair**

- New Cutlass Bearings, drop both Rudders and repack rudder seals and New bearings.
- New both Main Engine Seawater Intake Valves, hoses new strainer baskets.
- Apply Pettit Prop Coat on all underwater running gear.
- New additional Garmin Airmar B 60 Transducer
- All new zincs.

2023 August

- Complete Hull and Topsides Wax and Detailed

### **2023 April**

- 3 New Galley Maid 32-V Toilet Pumps

### **2023 May**

- All New Portable Fire Extinguishers and CO Monitors installed.
- New Caster Wheels for Marquipt Boarding Stairs.

### **2023 February**

- Engine Oil and Filter Change.
- New starboard engine Fresh Water Pump and Oil Cooler.
- New starter motor for port engine.

### **2022 March**

- New 32-V Fresh Water Pump, Expansion Tank and Check Valves
- New 8 8-V Batteries, terminals, New Battery Parallel Solenoid for 32-V Electrical System.
- New Port Engine Fresh Water pump
- Engine and Transmission Oil and Filter change.
- New Perko AC Strainer and New March AC Pump and hoses.

### **2022 March Engine Service**

- Oil and Filter Change
- New starboard engine freshwater pump and oil cooler
- Both Engines Walker Airsep Filters cleaned and oiled

### **2021 December**

- Heat Exchanger Service, Coolant Flush, 4 New engine Thermostats, Impellers, engines zincs.
- 2 New Mechanical Temp Gauges installed in Engine Rooms
- All 3 Fuel Tank Cleaning and Fuel Polishing.

### **2021 November**



- All New Zincs
- New Foot Pedals for Galley Maid Windlass

## **2021 October**

- Engine Oil and Filter change and All Fuel Filter change.

## **2021 August**

- Repack Shaft Seals

## **Broker's Comments:**

Overall, the boat is in good condition but there are few items needing repair or replaced by the new buyer which includes replacing the generator. The cost of these items has been considered in setting the below market asking price. If you are looking for a Hatteras 53 Yacht Fisherman, please give me a call and I will give you an accurate description of this vessel. The boat is on land at a boat yard in Fort Lauderdale for easy inspection at the present time.

2010 Caribe 12' (model DL 12 RIB) tender with 30HP Honda four stroke OB engine with low hours that's on a single axel trailer with cover can be purchased separately. This tender can be towed behind the Hatteras.

## **Secondary Description**

### **Aft Cockpit**

Boarding the boat from either side is a breeze. Functional all fiberglass cockpit offers easy access to the swim platform through the transom gate. Fishing, swimming, scuba diving, line handling and dinghy handling is so much easier. Traditionally a feature of sport fishing boats, motor yacht owners have discovered this versatile feature offers extra convenience and enjoyment. The swimming platform has Weaver Snap Davits for inflatable dinghy mount to swim platform. The out-board engine mount is to the port side of the cockpit. Fold-down ladder makes it easier to get in and out of the water. Underneath the cockpit floor is an extra 240-gallon fuel tank that was installed at the factory, a feature of the Yacht Fisherman for fishing enthusiast. A GFI electrical outlet is on the port side and a wash down spigot is on the starboard side.

### **Aft Deck**

An open Aft Deck with an overhang is nice and cozy for an evening to enjoy drinks or just relax and watch the sunset! Entry from the salon is through the double doors, two wing doors on each side give access to the side decks, access to the cockpit is with a varnished staircase. Underneath the ladder to the fly bridge is a storage unit with drawers.

### **Salon**

The salon is very much a classic Hatteras with lots of wood, side curtains, natural light flowing from 360-degree large windows and has two side doors to the side decks for line handling or to access the bow or aft deck. On the port side aft is an icemaker, wet bar with sink, glass storage for entertainment. White leather couch on the starboard side and an accent chair and a tv cabinet on the port side (no TV). There is a 1500-watt inverter. Hi-low Cocktail/Dinning table can be move to the aft deck for aft deck dinning. 12-V Valance lights for nighttime entertainment. Original speakers are



connected to an AM/FM stereo/CD player with Bluetooth.

### **Pilothouse and Flybridge**

Very original, Garmin GPSmap 498 GPS/Chart plotter and Ritchie Lighted original Compass.

2 Todd Helm Chairs with Center Helm

Bench seat forward of the helm

Ritchie Compass

AM/FM Stereo

Garmin GPSmap 4210

Overhead Electronic Box

Bimini Top

Ample Storage

### **Galley**

Entry is from the salon by a circular staircase on the starboard side. The spacious galley has been updated with new appliances. 4-person dinette has storage under the seat cushions.

GE Refrigerator

Kitchen Aid Dishwasher

GE Microwave,

GE 4 burner Stove

Garbage Disposal

Speakers are connected to salon AM/FM Stereo

### **Forward Stateroom**

Upper and lower berths

Hanging locker and Storage Drawers

Frigidaire Washer and Dryer

Enclosed head with vanity and stall shower.

Skylight



Anchor Locker storage

Amidship Guest Stateroom

Amidship on the port side.

Double berth

Hanging locker

Storage drawers

Nightstand

Head with vanity and stall shower

Speakers are connected to the salon AM/FM Stereo

### **Master Stateroom**

Aft with opening window to the cockpit, and opening port lights to the port side with curtains.

Queen size island bed with nightstands and reading lights.

Ample Storage drawers

Hanging locker

Separate Samsung sound bar with subwoofer for Bluetooth connectivity

Master head with vanity and stall shower

Original speakers are connected to the salon AM/FM stereo

### **Deck & Hull**

Stainless steel bow rail

Bow pulpit with roller.

Galley Maid Windlass with foot controls

Plow anchor with chain rode

Four SS Fender racks (8 fenders)

Two Deck boxes

Two Marquip Aluminum boarding stairs

Two spare bronze 4-blade propellers are stored in the generator compartment

## **Mechanical**

4 Cruise Air Air-condition units.

Original Onan 15 Kw Generator (not working, need replacement)

8 New 8-volt golf-cart batteries with all new cables and terminals.

New Galley Maid Fresh Water pump with check valves and expansion tank

New March air-conditioning pump with new sea strainer and new hoses and clamps.

New Three Galley Maid 32v toilet pumps

50' 50-amp shore power cord

Two 30-amp shore power cords

50-amp to two 30-amp Y-Connector

Glendinning Engine synchronizers

5 CO Monitors & New Fire Extinguishers

## **Engine Rooms**

Twin Detroit Diesel 8V71 TI (Hour meters read Port-790 & Starboard-797)

Craftsman air compressor

Rheem Water Heater

Galley Maid Fresh Water Pump and expansion tank

Racor Fuel Filters

Oil Change Pumps for both engines, transmissions and generator.

Fuel Priming pump

Shaft Locks

Engine Blowers

110-volt AC and 32-volt DC lighting

32-volt Sentry Battery Charger

CO2 Fire Extinguisher (not certified)

---

## **Exclusions: Seller's Personal items.**



## Mechanical Disclaimer

Engine and generator hours are as of the date of the original listing and are a representation of what the listing broker is told by the owner and/or actual reading of the engine hour meters. The broker cannot guarantee the true hours. It is the responsibility of the purchaser and/or his agent to verify engine hours, warranties implied or otherwise and major overhauls as well as all other representations noted on the listing brochure.

## Disclaimer

The company offers the details of this vessel in good faith but cannot guarantee or warrant the accuracy of this information nor warrant the condition of the vessel. A buyer should instruct his agents, or his surveyors, to investigate such details as the buyer desires validated. This vessel is offered subject to prior sale, price change or withdrawal without notice.





































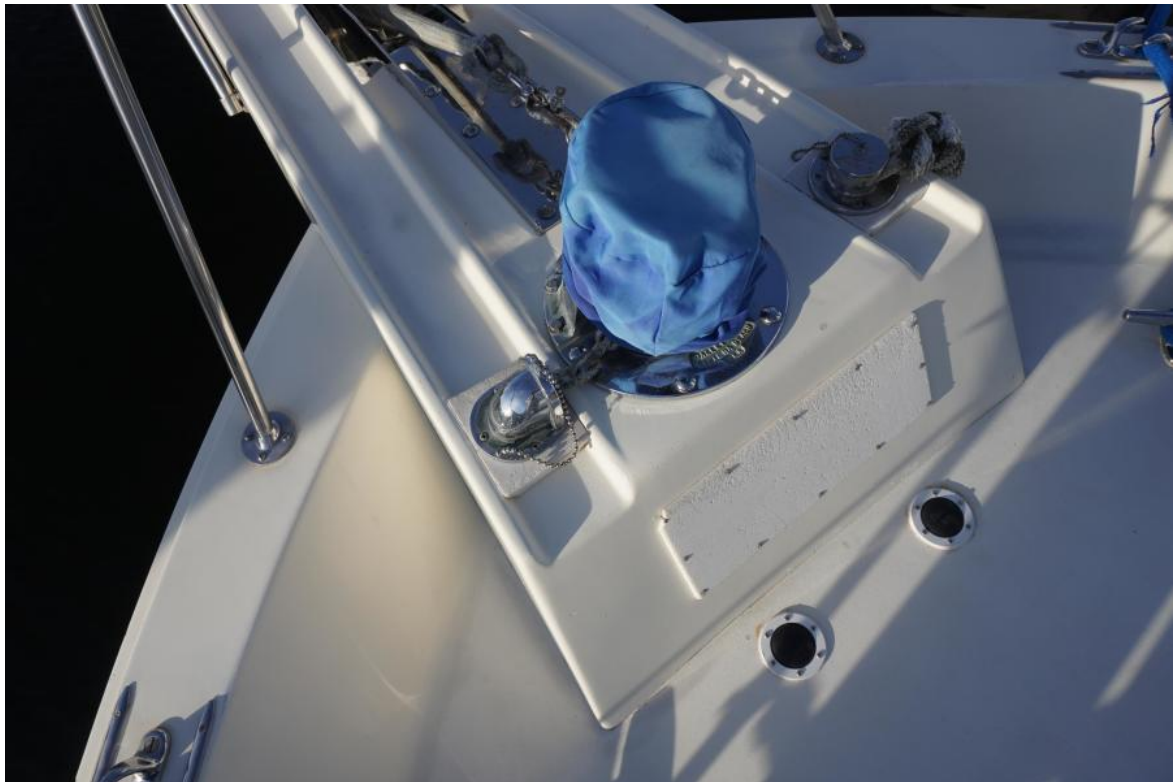












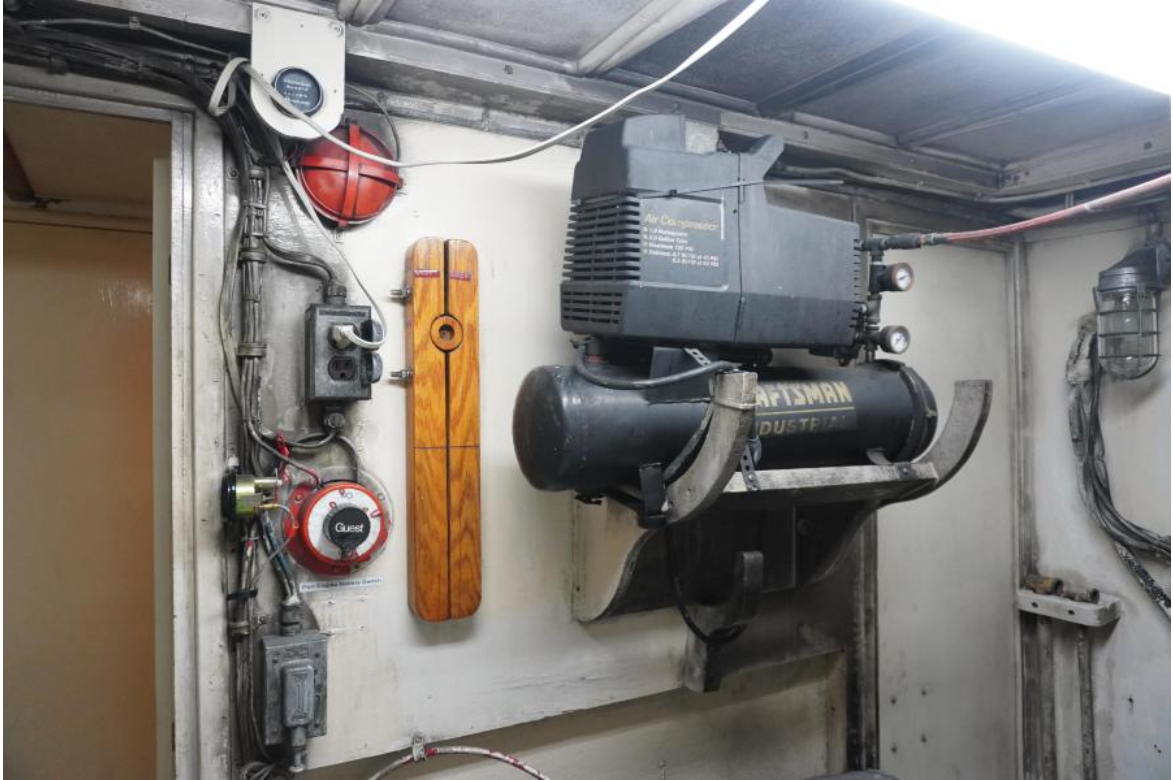


























Guest stateroom head and adjacent stall shower.

## To please the hard to please, every inch a Hatteras.

What makes the 53 Yacht Fisherman a versatile cruiser is the carefully planned marriage of cockpit convenience to motor yacht comfort. What makes the 53 Yacht Fisherman a quality cruiser is Hatteras' dedication to sound naval architecture and excellence in craftsmanship.

Every Hatteras yacht is built not only for unparalleled luxury but for dependable operation and lasting value, year after enjoyable year.

And because of it, the 53 Yacht Fisherman is a great sea boat. Strong. Stable. Dependable. A Hatteras.

Your Hatteras dealer will give you all the details.

And when he does, then nothing but a Hatteras will please you.



### The Optional Floor Plan.

Includes three staterooms and heads, twin walk-in engine rooms.

Master stateroom with queen-sized berth, built-in nightstand and full-length hanging locker.

Master stateroom's head with stall shower.

Guest stateroom with over-under berths, built-in full-length hanging locker and nightstand.



