



# CLB88

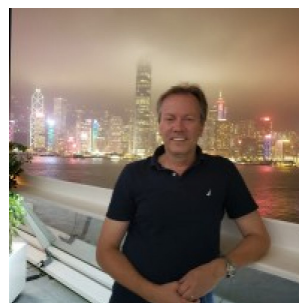
88' (26.82m) 2021 CL Yachts CLB88  
Fort Lauderdale Florida United States



## OVERVIEW

Manufacturer:	CL Yachts	Hull Material:	Composite
Engines:	2 Caterpillar	Cruise Speed:	20 Knots
Engine Model:	C32 ACERT	Max Speed:	25 Knots
Engine HP:	1600	Cabins/Heads:	4 / 6
Beam:	22' 6"	Fuel Type:	Diesel
Max Draft:	5' 6"	Fuel:	3000 G (11356.24 L)
Water:	460 G (1741.29 L)		

**\$6,900,000**



Panu Virtanen panuv@clyachts.com

1-954-309-8595

## Data Sheet

Category: Motor Yachts  
Subcategory: Flybridge  
Condition: Used  
Model Year: 2021  
Documented Year: 2021  
Beam: 22'6" (6.86m)  
Max Draft: 5' 6" (1.68m)  
LOA: 94' (28.65m)  
LWL: 79' 1" (24.10m)  
Cabins: 4  
Sleeps: 8  
Double Berths: 2  
Queen Berths: 1  
King Berths: 2  
Full Beam Master: Yes  
Heads: 6

Crew Cabins: 2  
Captain's Quarters: Yes  
Crew Sleeps: 4  
Crew Mess: 1  
Maximum Speed: 25 Knots  
Cruise Speed: 20 Knots  
Fuel Type: Diesel  
Super Structure Material: Composite  
Hull Material: Composite  
Hull Shape: Planing  
Hull Finish: Paint  
Hull Warranty: 10 years  
Special Offer: Yes  
Factory Demo: Yes  
Air Conditioning: Yes

Displacement: 175000 lbs  
Stabilizers: Zero Speed  
Stabilizer Brand: Sidepower and Quick  
SeaKeeper: Yes  
Bow Thruster: Yes  
Stern Thruster: Yes  
Fuel Tank: 3000 gal (11356.24 liters)  
Fresh Water: 460 gal (1741.29 liters)  
Holding Tank: 600 gal (2271.25 liters)  
Classification: RINA Hull Certificate  
Imported: Yes  
Builder: CL Yachts  
Designer: CL Yachts Desing Team  
Interior Designer: Jozeph Forakis  
Exterior Color: White  
HIN/IMO: CHL05176J021  
Stock #: 5176  
In Stock: Yes

## Engines/Generators

### Engine 1

Caterpillar  
C32 ACERT  
Inboard  
1600HP  
Fuel: Diesel  
Year: 2021  
Location: Port

### Engine 2

Caterpillar  
C32 ACERT  
Inboard  
1600HP  
Fuel: Diesel  
Year: 2021  
Location: Starboard

### Generator 1

Kohler  
Auto parallel  
53KW

### Generator 2

Kohler  
Auto parallel  
53KW

## Summary/Description

CLB88 - The Motor Yacht Reimagined. Born to perform with uncompromized safety where modern form meets the maximized function. Interior volume challenges much larger yachts including the 'fast displacement' boats, yet performance and max speed is what is expected from a fast planing hull. Sold with

FACTORY DEMONSTRATOR OPPORTUNITY! With the same innovative spirit that lies at the heart of all CL Yachts, CLB88 is born. Created in collaboration with internationally celebrated designer Jozeph Forakis, this cruiser goes beyond the realms of traditional luxury and into uncharted territories with confidence. With superior comforts, state-of-the-art safety measures, and elegant, contemporary spaces designed to unite loved ones, every element of the CLB88 has been conceived to surpass the expectations of discerning modern travelers.

### GOOD DESIGN AWARD

CL Yachts' CLB88 is proud to be the recipient of 2019 GOOD DESIGN Award in the transportation category, presented by the prestigious Chicago Athenaeum Museum of Architecture and Design.

Available for immediate delivery with factory warranties in Fort Lauderdale, FL. Factory demo opportunity!

## Salon

When entering the salon through a wide automatic electric door you can see through the entire main deck. Spacious open layout makes this yacht feel larger than most in her size range. The wide beam of 22'6" allows the space also for a wide and safe walk around decks. Main deck has spacious salon, a day head, wet bar with ice maker, fridge and wine cooler, and a large expandable formal dining table. A glass partition and a door can make the galley enclosed for crew services or keep it open for family style cooking and entertaining, A beautiful teak and holly flooring and teak ceiling gives this space exceptional warmth and comfort. Large windows give gorgeous ocean views and plenty of natural light.

## Staterooms

Four staterooms plus crew. Mid-ship master and equally sized VIP, both full beam and spacious. Additional two staterooms have a separate entry from the main deck. All staterooms have en-suite bathrooms, master bath has double vanity. This exceptional layout with three luxurious full beam staterooms plus an additional spacious stateroom is perfect for a large family or chartering.

## Galley

Galley can be open to the Dining and Salon or it can be closed with a glass partition and a door for crew service. Galley has plenty of refrigeration with a large SUBZERO 30" standing refrigerator and additional 30" SUBZERO fridge/freezer drawers. Plenty of storage with built in dish racks and a pull out pantry. This is a chef's kitchen ready to support serious entertaining or charter guests. Forward of the galley is a settee with dinette to enjoy breakfast and morning coffee with magnificent views.

## Outdoor entertaining

Outdoor entertaining is made easy aboard CLB88. One of the largest flybridge lounges in it's class, the upper deck space is equipped with a refrigerator, ice maker, outdoor grill and ample seating. A large hardtop shades this space with panoramic views of the surrounding waters. The flybridge has plenty of seating and a full bar with a beautifully designed bar top with carbon fiber supports. Carbon fiber theme continues at the full helm station just forward of the Stidd helm seat and the Stidd double seat for co-pilots.

With 270 degree views from the stern of the boat, the aft deck lounge is made for exactly that: lounging. Whether it be aperitifs with friends at sunset or al-fresco dining, the simple pleasures live here. Forward deck lounge is a private area for sun bathing and relaxation. Large sun pads, plenty of seating and removable cocktail tables makes this yet another area to enjoy beautiful vistas of the open ocean.

## Crew area

Two separate crew staterooms for 4 crew with crew lounge and a spacious bathroom. Crew area is finished to same high end level as the rest of this luxurious yacht.

## Electronics - Nav and Audio Visual

### NAVIGATION ELECTRONICS - PILOTHOUSE

- 2 Garmin ChartPlotter GPSMAP 8617 17" touch screens
- 1 Garmin GRID remote input device
- 1 Garmin card reader
- 1 Garmin GMR Fantom 56 Radar with 6'-0" open array antenna
- 1 Garmin AIS 800 Transceiver
- 1 Garmin VHF 210 with a GHS11 remote microphone at flybridge
- 1 Garmin GSD 25 Advanced Sonar Module
- 1 Garmin GMI 20 digital marine instrument.
- 1 Garmin gWind Transducer
- 1 Sirius XM weather system (subscription required)
- 1 Garmin Reactor 40 Autopilot
- 1 Garmin GHC 20 Autopilot Control Unit
- 4 Garmin Marine Cameras

### NAVIGATION ELECTRONICS - FLYBRIDGE

- 2 Garmin Chartplotter GPSMAP 8617 17" touch screens
- 1 Garmin GRID remote input device
- 1 Garmin VHF 210 with a GHS 11 remote microphone at pilothouse



1 Garmin GMI 20 digital marine instrument.

#### NETWORK SYSTEM

1 Aigean Networks AN-7000 Dual Band Wi-Fi client

1 MDS-242-A 4G LTE high speed modem with dual SIM slots

6 Aigean Networks Map-7 Dual-Band Marine Access Points

#### AUDIO VISUAL

##### Flybridge

1 Fusion MS-RA770 Apollo Marine Entertainment System With Built in Wi-Fi

2 Pairs JL Audio 7.7" Coaxial Speakers

##### Bow

1 Fusion MS-SRX400 Apollo Marine Zone Stereo With Built-In Wi-Fi

1 Pair JL Audio 6.5" Coaxial Speakers

##### Aft Deck

1 Samsung 32" Smart Full HD TV UN32N5300

1 DirecTV High Definition Satellite Receiver H24

1 Pair JL Audio 7.7" Coaxial Speakers

#### MAIN SALON

1 Samsung 65" 4K Smart QLED Ultra HDTV QN65Q60RA

1 DirecTV High Definition Dual Tuner Satellite Receiver HD DVR HR24

1 Samsung 4K UHD Blu-ray Player with HDR UBD-M9700

5 SpeakerCraft Accufit CRS7 9.625" Speakers

1 Niles SW6.5 Powered Subwoofer

1 Denon AVR4400H Premium 9.2 Channel AV Surround Receiver

1 Tripp-Lite SU1000RTXL UPS (Uninterruptable Power Supply)

#### MASTER STATEROOM

1 Samsung 55" 4K Smart QLED Ultra HDTV QN55Q60RAFXZA

1 DirecTV High Definition Satellite Receiver H24

1 Bose SoundTouch 300 Soundbar with Bluetooth and NFC

1 Tripp-Lite SMART500RT1U UPS (Uninterruptable Power Supply)

#### VIP CABIN

1 Samsung 43" 4K Smart QLED Ultra HDTV QN43Q60RA

1 DirecTV High Definition Satellite Receiver H24

1 Bose Solo 5 Soundbar with Bluetooth

#### FORWARD VIP CABIN

1 Samsung 32" Smart LED HDTV UN32N5300

1 DirecTV High Definition Satellite Receiver H24

1 Bose Solo 5 Soundbar with Bluetooth

#### TWIN CABIN

1 LG 24" HD Smart LED TV 24LH4830-PU Built-In Wi-Fi and Ethernet Connectivity

1 DirecTV High Definition Satellite Receiver H24

1 Bose Solo 5 Soundbar with Bluetooth

#### CREW LOUNGE

1 LG 24" HD Smart LED TV 24LH4830-PU Built-In Wi-Fi and Ethernet Connectivity

1 DirecTV High Definition Satellite Receiver H24

1 Bose Solo 5 Soundbar with Bluetooth

#### CREW CABIN

1 LG 24" HD Smart LED TV 24LH4830-PU Built-In Wi-Fi and Ethernet Connectivity

1 DirecTV High Definition Satellite Receiver H24

1 Bose Solo 5 Soundbar with Bluetooth

#### CAPTAIN'S CABIN

1 LG 24" HD Smart LED TV 24LH4830-PU Built-In Wi-Fi and Ethernet Connectivity

1 DirecTV High Definition Satellite Receiver H24

1 Bose Solo 5 Soundbar with Bluetooth

#### SATELLITE TV

1 KVH HD7 Satellite Dish

Satellite Telephone

Pre-wired for KVH TracPhone V3/V7-IP

## Engines and Generators

Twin CAT C32 ACERT with 1600 bhp each for fast, yet economical cruising. Smart engine room layout. The space planning allows easy maintenance of engines, generators and all major components. Kohler Decisionmaker 3500 Auto Parallel Generator System. Twin 53kW generators where the power is available automatically when vessel demand goes up. The second generator also powers down automatically when no longer needed.

## Tankage

Integral fiberglass tanks for safety and longevity. All the tanks are part of hull construction and located at the lowest part of the hull. No aluminum tanks on this yacht!.

3000 US Gallon fuel capacity allowing serious long range cruising.

## Disclaimer

The company offers the details of this vessel in good faith but cannot guarantee or warrant the accuracy of this information nor warrant the condition of the vessel. A buyer should instruct his agents, or his surveyors, to investigate such details as the buyer desires validated. This vessel is offered subject to prior sale, price change or withdrawal without notice.

## Mechanical Disclaimer

Engine and generator hours are as of the date of the original listing and are a representation of what the listing broker is told by the owner and/or actual reading of the engine hour meters. The broker cannot guarantee the true hours. It is the responsibility of the purchaser and/or his agent to verify engine hours, warranties implied or otherwise and major overhauls as well as all other representations noted on the listing brochure.























Fly bridge































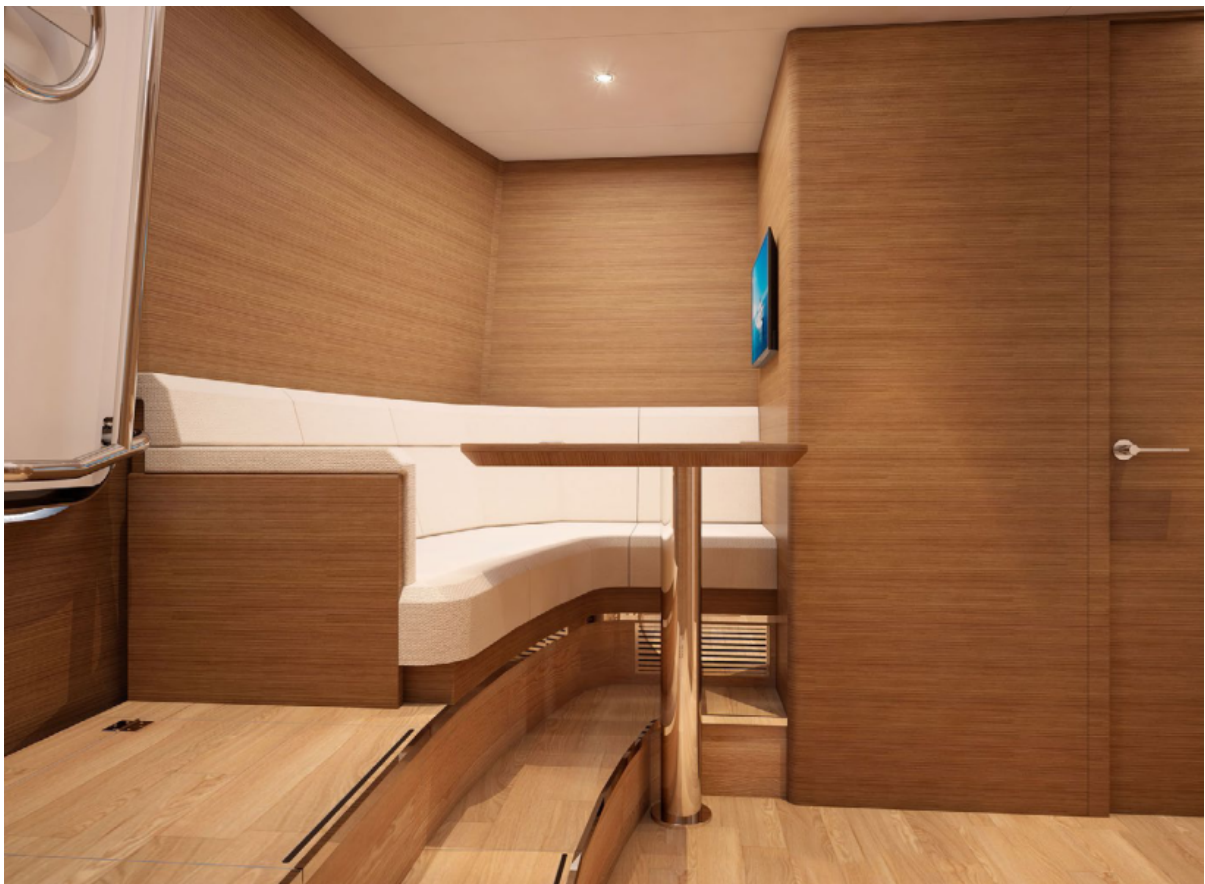












Crew lounge





Captain's qrtr



Crew strm









