



THE EQUITES

76' (23.16m) 2016 Azimut Magellano
Seattle Washington United States



OVERVIEW

Manufacturer:	Azimut		
Engines:	2 MAN	Hull Material:	Fiberglass
Engine Model:		Cruise Speed:	17 Knots
Engine HP:	1000	Max Speed:	22 Knots
Beam:	19' 8"	Cabins/Heads:	4 / 4
Max Draft:	5' 10"	Fuel Type:	Diesel
Water:	369 G (1396.82 L)	Fuel:	1981 G (7498.9 L)

\$2,199,000



Data Sheet

Category: Motor Yachts
Condition: Used
Model Year: 2016
Beam: 19'8" (5.99m)
Max Draft: 5' 10" (1.78m)
LOA: 76' (23.16m)
Cabins: 4
Sleeps: 8
Heads: 4

Crew Cabins: 1
Crew Sleeps: 1
Maximum Speed: 22 Knots
Cruise Speed: 17 Knots
Fuel Type: Diesel
Hull Material: Fiberglass

Fuel Tank: 1981 gal (7498.9 liters)
Fresh Water: 369 gal (1396.82 liters)
Holding Tank: 191 gal (723.01 liters)
Builder: Azimut
HIN/IMO: XAX76M15H516

Engines/Generators

Engine 1

MAN
Inboard
1000HP
745.70KW
Fuel: Diesel
Hours: 1250
Year: 2016

Engine 2

MAN
Inboard
1000HP
745.70KW
Fuel: Diesel
Hours: 1250
Year: 2016

Summary/Description

Motoryacht THE EQUITIES is a 76ft / 23.16m luxury yacht for sale, built and launched by yacht builder Azimut. Delivered to a knowledgeable yacht owner in 2016, this luxury yacht sleeps up to 8 guests in 4 staterooms and has accommodations for 1 crew member.

Galley

- Positioned at the entry of the saloon, starboard side
- Electric Vetro ceramic hob with four burners and air extractor
- Potholder in stainless steel
- Refrigerator/freezer
- Sink
- Oven
- Dishwasher
- Working top storage cabinet
- Direct lights (LED spots) + courtesy lights
- Marble top
- Wooden floor
- Venetian blind
- Wide lobby starboard side accessible from the cockpit
- Cabinet starboard side with library
- Storage cabinet for dishes and glasses for 10 people
- Direct lights (LED spots) in the ceilings
- Courtesy lights
- Venetian blind

Salon & Dining Area

- 1 sofa (5 seats)
- Dining table in wood with sliding top+ 8 chairs on portside
- Salon furniture with hi-lo system to house a 32" flat screen TV
- Library cabinets on both sides
- Direct lights (led spots) in the ceilings
- Courtesy lights
- Venetian blind
- Carpet floor

Owner's Stateroom

- Queen bed with storage underneath, foam mattress, bedspread, and cushions
- (2) Nightstands with drawers
- (2) Applique lights
- Panoramic windows on each side

- (2) Openable portholes integrated in the windows, one per each side
- Vanity/desk on starboard side with pouf
- Sofa on port side
- Cabinet with shelves on starboard and portside
- Dressing room with hanging bar, drawers and shelves on starboard side
- Openable porthole
- Direct lighting on ceiling (led spots) and courtesy lights
- (2) Reading lights
- Carpet floor
- Venetian blind

Owner's Stateroom Head

- WC Planus
- Bidet Planus
- Sink in ceramic
- Cabinet under the sink
- Mirror
- Lights on ceiling
- Shower box with crystal door, side walls in marble (1x) and laminated wood (2x), floor in teak grating
- Shower lights + Courtesy lights
- Ceiling lights (LED spots)
- Wooden floor
- Openable porthole
- Venetian blind

VIP Stateroom

- Queen size bed, with storage underneath, foam mattress, bedspread, and cushions
- (2) Nightstands with drawers
- (2) Reading lights
- Openable portholes, one on each side
- Wardrobe with hanging bar starboard side and a second wardrobe with shelves on port side
- Hatch on ceiling
- Direct light on ceiling (led spots) and courtesy lights
- Carpet floor
- Venetian blind

VIP Stateroom Head

- WC Planus
- Sink in ceramic
- Mirror and storage under the sink
- Lights on ceiling and courtesy lights Shower lights

- Shower with crystal door, sidewalls in laminated wood and marble, floor in teak grating
- Wooden floor
- Openable port hole
- Venetian blind

Port Guest Stateroom

- (2) Twin sized bunks with foam mattress, bedspreads and pillows
- (2) reading lights
- Openable porthole
- Wardrobe with hanging bar
- LED spotlights on ceiling
- Courtesy lights
- Carpet floor
- Venetian blind

Starboard Guest Stateroom

- (2) single beds with storage underneath, with foam mattress, bedspreads and pillows
- Nightstand
- (2) reading lights
- Openable porthole
- Wardrobe with hanging bar
- LED spotlights on ceiling
- Courtesy lights
- Carpet floor
- Venetian blind

Guest Head

- WC Planus
- Sink In ceramic
- Mirror
- Cabinet under the sink
- Lights on ceiling
- Shower box with crystal door, side walls in laminated wood, floor in teak grating
- Wooden floor
- Openable porthole
- Venetian blind

Helm

- Helm station in leather and wood
- Steering wheel in leather and steel engine controls instrumentation for main engines and gear box electronics for navigation, bow thruster controller, searchlight controller, compass, Humphree interceptor controller
- 12" touchscreen display controllers for: generators' connection/disconnection, ground plug connection/disconnection, bar opening/closing, navigation lights, wipers, bow anchor winch, chain washer, horn, intruders and relation position's indicator, rudder pump, naphtha discharging pump, waste water pump, engines and gear box alarm, alarm for the wrong activity of the navigation lamps, waste water tank high level alarm, bilge high level alarms, fire extinguisher alarm for the engine compartment
- Direct lights (LED spots) in the ceilings
- Courtesy lights

- Navigation lights
- Stair to get to the lower deck located on the left side of the boat
- (2) leather electrically adjustable pilot settees
- Electric panel positioned in the cabinet
- Chart table on starboard side with storage
- Vertical grab rail on the left side of the side door

Aft Deck & Cockpit

- Deck in teak (8mm)
- Sofa for 3 people, with cushions
- Teak table with base in stainless steel, in front of the sofa
- Sliding salon door in three sections; the left and central section's opens from left to right, right section is fixed
- Storage at the port side of the flybridge stair
- Watertight hatch on the floor as emergency exit of the crew area
- Technical area at the right side of the flybridge stair, accessible from the cockpit, located the fire hose
- Control panel for the gangway and the electrohydraulic swim platform
- Stainless steel gates to close the staircase to the swim platform
- Maneuvering intercom
- Halogen spots on ceiling, resistant to bad weather conditions, and courtesy lights
- Copes for the table and salon settee
- Drainage holes

Side Decks & Bow

- Deck external surface in teak (8mm)
- Two fuel fillers, one on each side of the superstructure
- Stainless steel safety rails
- Stainless steel handrail on bulwark
- Side boarding gates in the aft part
- Teak caprail on bulwark
- Watertight halogen lights on the ceiling and courtesy lights
- Windows in high thickness tempered glass and glued to the superstructure without metal frames
- Side door for the access to the helm station on the portside.
- Magellano 76 logo in stainless steel, one on each side
- Drainage holes
- Deck external surface in teak (8mm)
- Chain storage, accessible through one hatch in the deck; with water drainage holes
- Storage accessible through one hatch in the deck
- Chain washer through the fire extinguisher hose
- Water outlet to wash the deck
- Fire hose
- Storage locker, with GRP hatch, located on each side of the superstructure
- Fresh water filler inside the storage located on the port side
- Mooring hooks storage
- Sunbathing area with cushions and glass holder Storage
- Underneath the sunbathing area
- Sofa integrated in the structure in GRP for three people emergency hatches from the VIP cabin underneath the sofa
- Watertight halogen lights for the mooring area and courtesy lights
- Electric wipers for forward windows

- Black mesh for the front and lateral wheelhouse windscreens
- Covers for sofa and sunbathing cushions.
- Electric searchlight (Jabsco type on superstructure, above the windscreen)

Flybridge & Upper Helm

- The wide flybridge is accessible through the external GRP staircase with teak steps and stainless-steel handrail
- Windscreen in plexiglass
- Steering wheel
- Rudder
- Engine controls
- Navigation equipment (see Electronics)
- Bow-thruster control
- Navigation lights controller
- Horn controller
- Search light controller
- Firefighting pump control (chain washer)
- Intruder controls and indicators
- Intercom for maneuvering
- Magnetic compass
- 3 seats GRP pilot settee on the left side
- GRP 'C' sofa on the left side, appointed with cushions and a backrest with stainless supports w/ storage underneath
- Teak table with stainless steel base offering 8 seats
- Bar unit made with GRP on the right side, appointed with stainless, steel handrails, sink, refrigerator, (49l capacity), barbeque, storage unit for glasses
- Hard top in GRP, with navigation, lights, antennas, 24 Vcc "Marco" horn, weathertight lights on ceiling positioned into the structure, courtesy light, freshwater hose attack
- U-shaped handrails in stainless steel on aft and side of the flybridge deck and around the stairs to the flybridge
- Antiskid surface
- Copes for protecting the dashboard, dining table, pilot settee and C shaped dining bench
- AZIMUT logo, in chrome finished brass, one on each side
- Drainage holes
- RAYMARINE E95 9" radar/chart plotter
- RAYMARINE I70 multifunction display
- RAYMARINE PT70R autopilot
- RAYMARINE VHF RAY 240E KIT 2nd STATION COMPASS Zenith BZ1/3143
- HARD TOP: N° 1 Antenna PATHFINDER OPEN ARRAY 48" 4 Kw, N° 1 ANTENNA RAYMARINE VHF (V/067), N° 1 Antenna GPS RAYSTAR 130
- Teak laid bathing platform (8mm)
- Electrohydraulic lifting swim platform with teak flooring and grating. Max capacity 450kg for tender (max tender length 3,85mt; max tender breadth 1,76mt). Tender is not supplied
- Structural GRP staircases with teak steps (8mm) on both sides of the transom for access to the swim platform
- Stainless steel handrail
- Manual removable swim ladder on aft starboard side of swim platform can be stored in the garage
- Electro-hydraulic retractable gangway in stainless steel and teak, port side
- Door to access lower deck/crew quarters placed on transom, port side
- Water shore connection, shower, freshwater outlet on transom, starboard side
- Shore power inlets in a storage placed in a storage on transom starboard side
- TV and phone inlets placed in a storage on transom starboard side

- Black water discharge, placed in the starboard mooring area
- Rubrail in stainless steel on swim platform and side cigars
- COMPASS White Star BP2

Crew Quarters

- The aft quarter is accessible through a stair located in the galley on the right side of the salon
- The quarter is characterized by two crew cabins, a lobby and a crew head
- Storage with washer/dryer unit, starboard side
- Direct lights on ceiling (led spots) and courtesy light
- Storage cabinet port side
- Folding table with 2 stools
- Vinyl floor

Crew Cabins

- Single bed, with foam mattress, bedspread, and pillow
- Direct lights on ceiling + Courtesy lights + Reading light
- Openable porthole
- Wardrobe with hanging bars and shelves
- Vinyl floor
- Curtain
- Door to the aft service area and bathing platform

Crew Head

- WC Planus
- Sink in ceramic
- Mirror and cabinet under the sink, light on ceiling
- Shower
- Teak floor

Water & Waste Systems

FRESH WATER SYSTEM

- System can be fed by the tank placed at bow (capacity:1400 lt) or by the shore connection on stern
- Two e/pumps, one 220V (55lt/min), one 24V (55lt/min), pump water from tank to all the sinks, showers, bidet, galley and fly's sinks, electrical appliances
- Water heater with 100lt (26,8 US gls) maximum capacity, placed in VIP cabin bilge WC flushing
- Active carbon filters on the shore water connection
- Level monitoring on touch screen and on main electric panel
- Predisposition for water maker

GREY AND BLACK WATERS SYSTEM

- (1) tank 1450 lt (381US gls) for both grey and black water, placed forward of the fuel tank to collect showers, bidet, sinks, appliances (washer, dishwasher) fan-coils and WC discharges. The tank is provided with breather pipe, no smell strainer, and with electric level sensor

- The tank's emptying comes manually outboard through (1) e/pump 230 Vac (45lt/min to 9m H2O). Pump controls are in the main electric panel and in the motronica
- The tank's emptying comes out ashore also through the dedicated hose placed aft on the transom (2) Collecting tanks for grey water are placed as follows (1) in the crew area to collect shower, sink, fan-coil and washer discharge & (1) in the owner cabin to collect shower, sink, bidet, fan-coil and galley sink discharge

SEA WATER SYSTEM

- (6) main bronze sea water intakes with valve and filter: (2) for generators, (2) for engines, (1) for the sea fire extinguisher manual pump and the air conditioning unit e/pump, (1) for the main sea fire extinguisher e/pump and for water maker predisposition
- Sea water fire system made up of an E/P 220V (180lt/ min to 14m H2O), placed in the technical area, engine room and connected to (2) hoses on main deck, one at bow and the other one at aft. The pump control is in the main electric panel, in the main helm, on the fly and on starboard side of the superstructure area
- Part of the main engines cooling water is used to cool gear box, the shaft seals, the bow thrusters' oil and the raisers for gas discharge
- Chain washing with sea water supplied by the same pump of firefighting system

Air Conditioning, Ventilation & Extraction System

- Water circulation A/C conditioning system with two compressor chiller units placed in the engine room. Fan-coil displaced in every part of the boat, with independent controller of the temperature: Galley/Salon/Dinning: 3 x 12.500btu/h fan-coil, Helm/Wheelhouse: 2 x 16.000btu/h fan-coil, Owner stateroom: 2 x 9,200btu/h fan-coil, Guest Stateroom: 1 x 9.200btu/h fan-coil port, Guest cabin: 1 x 6.200btu/h fan-coil, VIP: 2 x 6.200btu/h fan-coil Crew , Lobby: 1 x 6.200btu/h fan-coil Crew cabins: 2 x 4.480btu/h fan-coil
- Centralized electric extractor (max 200m3/h) for the guest heads, set by (1) E/Extractor, controlled through the ignition of the light of each head
- Centralized electric extractor for the secondary electrical panels, set by (1) E/Extractor (max 260m3/h)
- Electric extractor for the crew head and aft technical area, set by (1) E/Extractor (max 600m3/h), controlled through the ignition of the lights
- Electric extractor for the windscreen demisting system, set by (1) E/Extractor (max 600m3/h) The ventilation of engine room works through natural ventilation and (2) E/Extractors (220V max 5460m3/h)

Electrical Equipment

- Voltage of 220 V A/C single phase, 60 Hz, for: power circuits, lights in the engines room, neon lights, electrical outlets, 24 V c.c. with grounded negative for: engines starter, emergency circuits, spotlights, headboards and courtesy lights, little users, navigation lights, electronics 12 V c.c. with grounded negative for: generators starter
- Electrical wiring is housed in metal or self-extinguishing closed PVC conduits. Electrical wiring is constructed with no flammable materials and with proper cross section related to the use. In the standard supply two extra conduits 40mm diameter from the hard top to the technical panel under the wheelhouse
- The main control panels are in the aft quarter's lobby and in the wheelhouse. Secondary electrical panels are installed in all areas of the yacht
- All equipment has ground junctions with adequate cords and braiding of copper with proper cross section.
- One ground system has the following functions: ground system for machinery, sea water intakes, etc..; ground system for electrical circuits, which joins all control panels and electrical equipment. The ground system is made up by two copper straps all along the length of the yacht, connected to 2 aft zincs

POWER SOURCES GENERATORS

- N° 2 20kW Kohler 220V/60Hz/ single phase generators, with 20 kW/20kVA/cos ϕ = 0.8 power located in the engine room, (3,300 hours - Port, 2,800 hours - Starboard)
- Hour meter and mounted on silent blocks, sound shield boxes, control panel and 12 V d.c. starter
- Remote starter

SHORE PLUGS

- N° 2 63A 220V shore plugs, located on transom, each connected to on board electrical system with a galvanic insulator

BATTERIES

- Service and emergency batteries: n° 1 group of gel batteries 540Ah a 24Vcc, located in the cabinet underneath the helm station, for part of the lighting, signaling, little users, and emergency
- N° 1 group of lead batteries with 200Ah a 24Vcc for starting main engines. These batteries are high instant zap capacity
- N° 2 groups of leaded batteries with a total capacity of 105Ah a 12Vcc. each one for generators starter. These batteries are high instant zap capacity

RECHARGING SYSTEMS

- Two 24Vcc/75A automatic Mastervolt battery charger for service batteries
- One 24Vcc/25A automatic Mastervolt battery charger for main engines starting batteries
- One 12Vcc/25A automatic Mastervolt battery charger for generators starting batteries During navigation, engines alternators will charge each engine starter batteries
- During navigation, genset alternators will charge each genset starter batteries

LIGHTS AND SOCKETS

- 220V A/C for the engines room and technical areas made by IP65 lamps
- 24V c.c. for internal lights, the engines room emergency lights and for all external lights internal lights are LED; external lights are LED or halogen

Mechanical Equipment

- (5) e/pumps 24Vcc (90lt/min to 5m H2O) bilge positioned to cover each compartment (1 x crew area, 1 x engine room, (2) owner cabin, (1) bow area). The pumps' controllers and alarms are in the wheelhouse on the "touch screen" and on the main electrical panel
- Emergency suction in engine room, connected to the starboard engine sea intake
- Copper and pvcc pipes.
- (2) tanks in GRP, located midship: 7.500 l. total capacity (5250 l Main tank, 2250l daily tank). Each tank is provided with stainless steel AISI 304 breather pipe and electric sensor for level monitoring
- Fuel tanks levels are visible on the touchscreen and on the main electrical panel. Double racor filters for engines, Racor filter for generators
- Fuel filling operation is carried out through inlets placed on each side of the superstructure connected with the structural tank only
- The decanting between the structural tank and the daily tanks can be realized through e/ pump (75lt/min to 7m H2O) or the emergency manual pump (24lt/min to 30m H2O)
- The decanting e/pump controllers are in the main helm on the "touch screen" and on the principal electrical panel
- AISI 304 exhaust piping with AISI 316L raisers, built according to engines manufacturer prescriptions
- Generators exausts on the hull sides

- One electrohydraulic unit for rudders, 24Vcc
- One electrohydraulic unit for gangway and swimming platform, 220 Vac/24Vcc
- One pump connected to the starboard main engine for the bow thruster, provided with 50lt oil tank and heat exchanger

Safety Equipment

- (12) portable extinguishers in all the areas of the yachts as follow: (3) 2 kg CO2 extinguisher, (6) 1 kg powder extinguishers, (3) 2 kg powder extinguishers
- Centralized fire extinguishing system (FM200) in engine room
- (1) extinguisher cylinder w/ handle for activation
- Electronic box 12/24Vcc to stop air extractor in engine room, fuel decanting pump, generators and main engines
- Alarm fire system in the helm station with sensor located in engine room
- Two sea water fire hoses: one placed in the cockpit cabinet starboard side, one placed in the chain storage at bow

Exclusions

All personal property is excluded unless specifically identified and included in the sale agreement and listing specifications. Personal property refers to all items not permanently attached to the vessel including but not limited to artwork, furnishings, and recreational or entertainment items. Advertisements, marketing materials, and/or other photography may depict the vessel with personal property, however, such personal property is excluded unless otherwise specifically included as provided herein.

Disclaimer

The company offers the details of this vessel in good faith but cannot guarantee or warrant the accuracy of this information nor warrant the condition of the vessel. A buyer should instruct his agents, or his surveyors, to investigate such details as the buyer desires validated. This vessel is offered subject to prior sale, price change or withdrawal without notice.



Profile



Galley



Galley



Galley



Galley



Salon



Salon



Salon



Salon



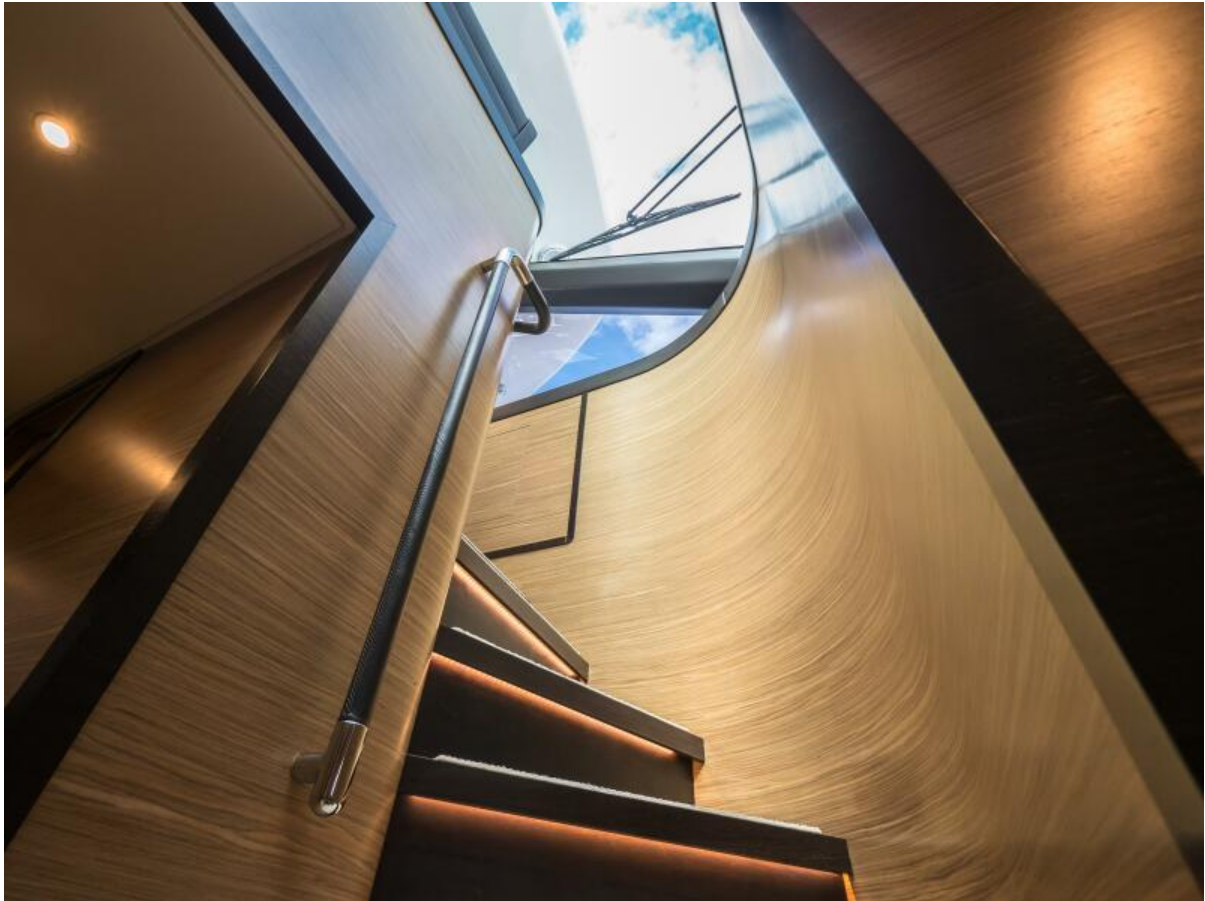
Helm



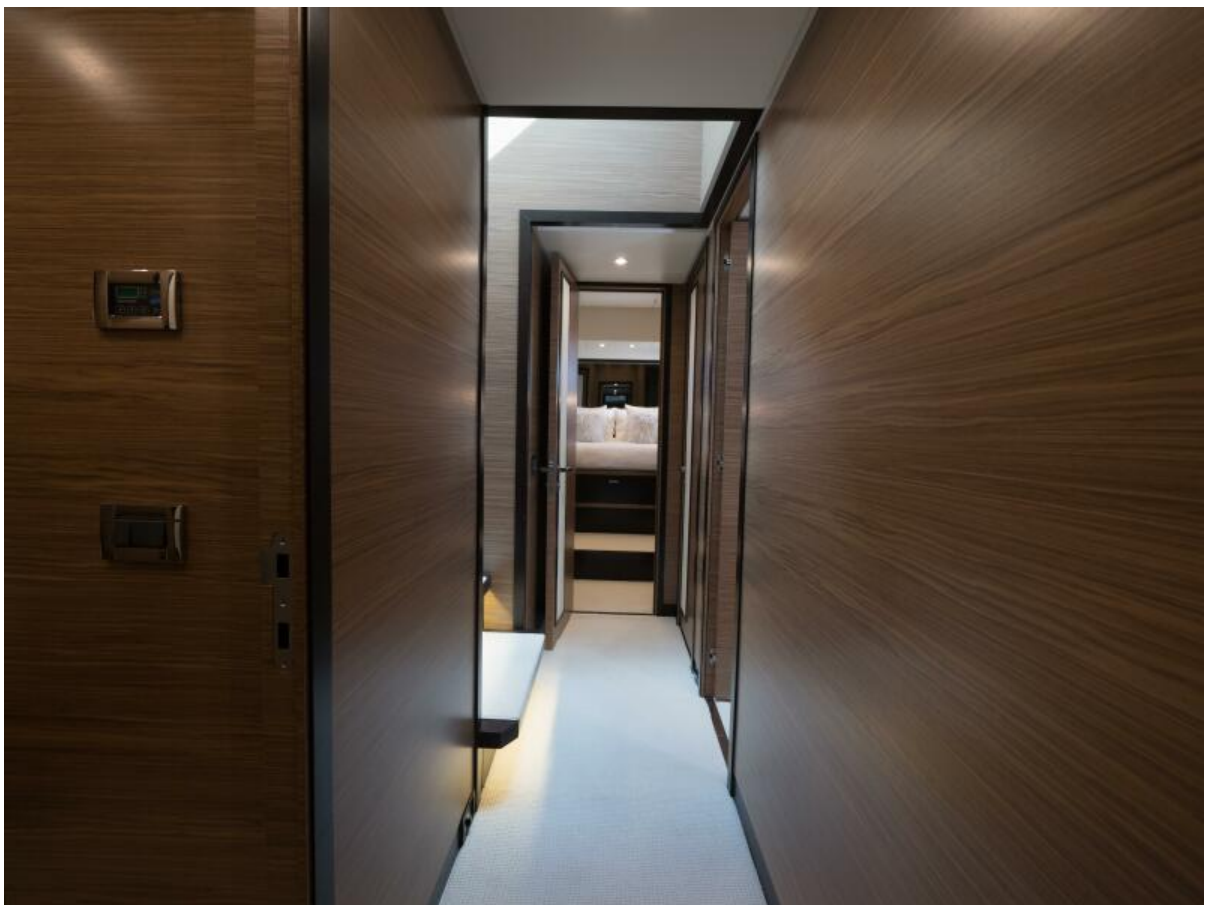
Helm



Helm



Stairs to Stateroom



Foyer



Owner's Stateroom



Owner's Stateroom



Owner's Stateroom



Owner's Stateroom Head



Owner's Stateroom Head



Owner's Stateroom Head



VIP Stateroom



VIP Stateroom



VIP Stateroom



VIP Head



VIP Head



VIP Head



Port Guest Stateroom



Starboard Guest Stateroom



Aft Deck



Aft Deck



Aft Deck



Aft Deck



Aft Deck



Aft Deck



Side Deck



Flybridge



Flybridge



Flybridge



Flybridge



Flybridge



Flybridge



Flybridge Helm Station



Flybridge Helm Station



Foredeck



Engine Room



Engine Room



Engine Room



Crew Quarters



Crew Quarters



Starboard Profile



Starboard Bow



Bow



Port Bow



Port Profile



Underway



Underway



Underway



Underway



Underway