



MAITRI

36' (10.97m) 2016 Everglades 360 LXC
San Rafael California United States



OVERVIEW

Manufacturer:	<i>Everglades</i>		
Engines:	3 Yamaha	Hull Material:	Fiberglass
Engine Model:	300 XCA	Cruise Speed:	38 Knots
Engine HP:	300	Max Speed:	48 Knots
Beam:	10' 8"	Cabins/Heads:	1 / 1
Max Draft:	3' 5"	Fuel Type:	Gas/Petrol
Water:	35 G (132.49 L)	Fuel:	378 G (1430.88 L)

\$299,000



Data Sheet

Category: Center Consoles
Condition: Used
Model Year: 2016
Beam: 10'8" (3.25m)
Max Draft: 3' 5" (1.04m)
Min Draft: 2' (0.61m)
LOA: 36' (10.97m)
Cabins: 1
Sleeps: 4
Heads: 1

Maximum Speed: 48 Knots
Cruise Speed: 38 Knots
Fuel Type: Gas/Petrol
Hull Material: Fiberglass

Fuel Tank: 378 gal (1430.88 liters)
Fresh Water: 35 gal (132.49 liters)
Holding Tank: 19 gal (71.92 liters)
Builder: Everglades
HIN/IMO: RJDAA004L516

Engines/Generators

Engine 1

Yamaha
300 XCA
Outboard 4 Stroke
300HP
223.71KW
Fuel: Gas/Petrol
Hours: 775

Engine 2

Yamaha
300 XCA
Outboard 4 Stroke
300HP
223.71KW
Fuel: Gas/Petrol
Hours: 775

Engine 3

Yamaha
300 XCA
Outboard 4 Stroke
300HP
223.71KW
Fuel: Gas/Petrol
Hours: 775

Summary/Description

Motoryacht MAITRI is a 36ft / 10.97m luxury yacht for sale, built and launched by yacht builder Everglades. Delivered to a knowledgeable yacht owner in 2016, this luxury yacht sleeps up to 4 guests in 1 staterooms.

Overview

A rare find on the West Coast, this Everglades 360LXC is well equipped to handle fishing or cruising on the rough Pacific waters. Her stout build quality, deep V hull design, and reliable systems make for a comfortable, stable ride unphased by chop or swell. MAITRI has received extensive servicing by her current owner including a full 100hr service just completed including new waterpumps on all engines. Bottom paint just completed along with a full detail.

Whether you prefer an open air boat and fully enclosed protection, MAITRI can offer you both. With multiple large seating areas on deck and a simple cabin arrangement with ample berths, large enclosed head, and equipped galley below, she is great for dayboating with the option to spend the weekend aboard.

KEY FEATURES

- Excellent entertaining layout with protected seating areas
- Solid stable ride with joystick maneuverability
- Extensive maintenance service history by current owner
- Full Eisenglass and Sunbrella inventory
- Well equipped for cruising or fishing

Cabin

- Large protected dinette located to starboard forward of helm station
- Companionway center in cabin
- Large double pullman berth located forward
- Double berth aft of staircase under cockpit floor
- Seating located to starboard
- 2 x JL speakers forward
- Jensen TV
- Control panel
- Shorepower HVAC in cabin and cockpit

Galley

- Located to starboard in lower cabin
- Dinette located to starboard on main deck
- Isotherm refrigeration
- Muave microwave
- Stainless steel sink
- Kenyon electric grill at aft wetbar

Head

- Located to port in lower cabin
- Stainless steel sink
- Shower attachment
- Electric head
- Vent fan

Helm

- Console located centerline
- Yamaha Joystick controls
- 2 x Touchscreen Garmin 7616 displays
- Garmin Autopilot
- Garmin Sounder
- Garmin Radar
- Garmin GHS10 VHF
- Yamaha electric engine instrument
- Adjustable trim tabs
- Ritchie Compass
- Fusion MS-UD750 stereo
- Windshield wipers
- Wet bar with refrigeration and Kenyon electric grill located to starboard of the helm station

Cockpit & Deck Equipment

- Centerline wet bar with Kenyon grill, stainless steel sink, cup holders
- Pop-up TV located to port
- Courtesy lights
- LED deck lights
- Docking lights
- JL Speakers
- Beige foam carpet runner in cockpit
- Sunshade
- Cockpit enclosure (panels aft of windshield all new 2021)
- Boarding gate to port
- Forward hatch on foredeck
- Stainless steel bow rail
- 12 lb. Lewmar Delta anchor with chain and lime road
- 5 lb. Danforth anchor with line rode
- Raw water washdown
- Shurflo Aqua King II raw pump
- Removable bait tank setup on swim platform
- Collapsible cleats forward, amidship, and aft
- Removable bow cushions
- New aft bench upholstery (2021)
- Extensive Sunbrella canvas inventory including engine covers, slant cover, etc.
- Retractable SureShade awning with new Sunbrella material
- Downriggers

Deck & Hull

- Molded fiberglass construction
- Single hard chine
- Two lifting strakes per side
- Modified V-shape hull

- Black anti-fouling bottom paint
- White over blue gelcoat on topside and transom
- Plastic rub rail with stainless steel strike rail
- White gelcoat on deck
- Molded non-skid deck surface
- Painted aluminum folding radar arch

Electrical Equipment

- Charles 5000 SP 80amp battery charger
- Charles 5000 SP 40amp battery charger
- 2 x 30amp/125volt shore power inlets on transom
- 2x 30amp/125volt shore power cord
- 5 x 12 volt AGM batteries
- KVH dome w/ TracVision antenna

Mechanical Equipment

- Gas, Yamaha 300 XCA Outboard 4-Stroke Engines, Stainless Steel Props, 300HP (775 Hours)
- Plumbed for Kohler 7.5kw gas generator (generator has been removed)
- 2 x Rule submersible automatic pumps in aft lazarette
- Rule 1500 submersible automatic bilge pump

Exclusions

All personal property is excluded unless specifically identified and included in the sale agreement and listing specifications. Personal property refers to all items not permanently attached to the vessel including but not limited to artwork, furnishings, and recreational or entertainment items. Advertisements, marketing materials, and/or other photography may depict the vessel with personal property, however, such personal property is excluded unless otherwise specifically included as provided herein.



MAITRI, 36' (10.97m) Everglades 2016



Cockpit



Cockpit



Cockpit



Cockpit



Cockpit



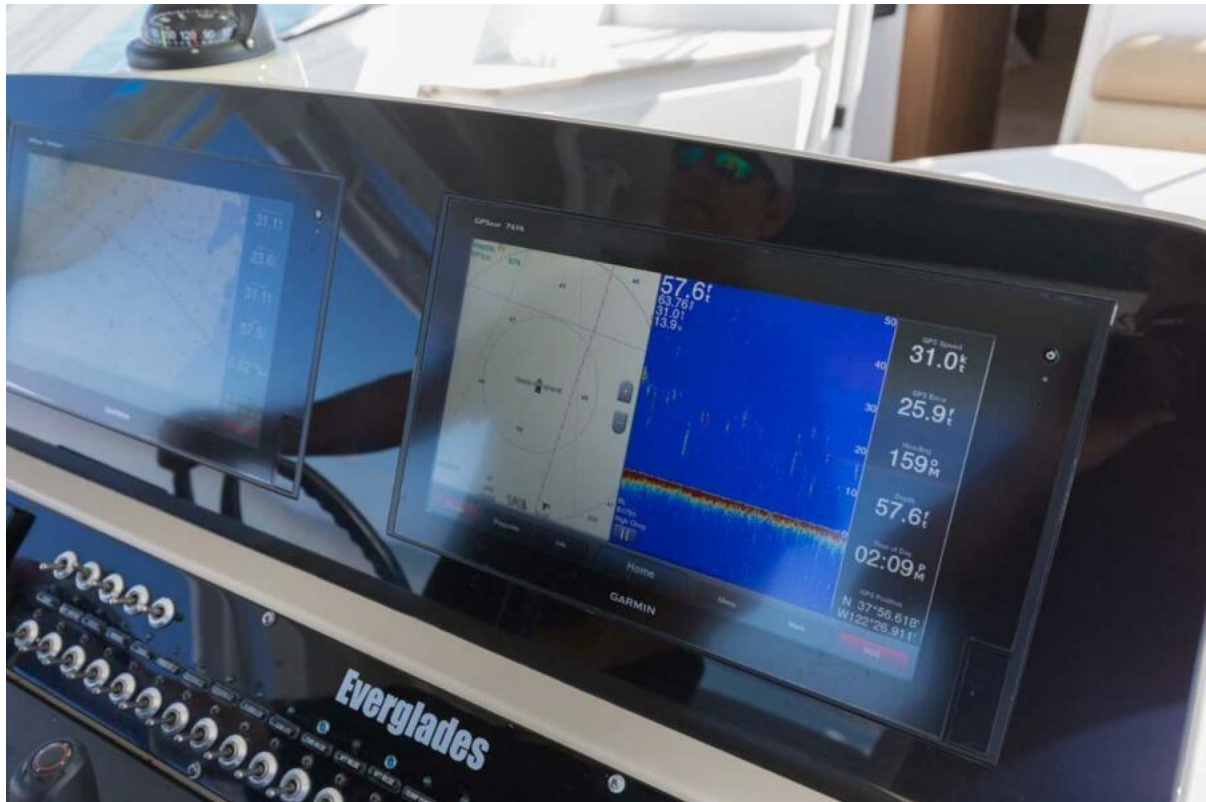
Walkway



Helm



Helm



Helm



Forward Settee



Forward Settee



Forward Settee



Forward Settee



Cabin



Cabin



Cabin



Cabin



Head



Underway



Underway



Underway



Underway



Underway



Profile