



# Silhouette

92' (28.04m) 2020 Ferretti Yachts 920  
Fort Lauderdale Florida United States



## OVERVIEW

Manufacturer:	<i>Ferretti Yachts</i>		
Engines:	2 MTU	Hull Material:	Fiberglass
Engine Model:	M96L	Cruise Speed:	21 Knots
Engine HP:	1925	Max Speed:	26 Knots
Beam:	22' 2"	Cabins/Heads:	4 / 4
Max Draft:	7' 2"	Fuel Type:	Diesel
Water:	349 G (1321.11 L)	Fuel:	2378 G (9001.7 L)

**\$7,500,000**



## Data Sheet

Category: Motor Yachts  
Condition: Used  
Model Year: 2020  
Beam: 22'2" (6.76m)  
Max Draft: 7' 2" (2.18m)  
LOA: 92' (28.04m)  
Cabins: 4  
Heads: 4

Captain's Quarters: Yes  
Maximum Speed: 26 Knots  
Cruise Speed: 21 Knots  
Fuel Type: Diesel  
Hull Material: Fiberglass

Dry Weight: 187393 lbs  
Fuel Tank: 2378 gal (9001.7 liters)  
Fresh Water: 349 gal (1321.11 liters)  
HIN/IMO: XFAF9214A020

## Engines/Generators

### Engine 1

MTU  
M96L  
Inboard  
1925HP  
1435.47KW  
Fuel: Diesel  
Hours: 1210  
Location: Port

### Engine 2

MTU  
M96L  
Inboard  
1925HP  
1435.47KW  
Fuel: Diesel  
Hours: 1207  
Location: Starboard

## Summary/Description

Excellent Condition

### **2020 Ferretti 920 SILHOUETTE**

#### **\*Sistership Images**

- 4-cabin version (two master cabins)
- Remodeled galley with increased electrical capacity
- Added new large microwave and custom spice pullouts in the galley
- Recessed, pull-out Miele cappuccino machine in galley
- Commercial refrigerator added 10.3 additional refrigeration space!
- An additional five-cubic-foot-deep freezer is in the engine room
- The 9. Zero furniture is covered with custom outdoor fabrics and pillows
- GROHE Blue chilled & sparkling fresh water system
- Upgraded premium custom mattresses in all cabins
- Upgraded master bathroom with polished Taj Mahal quartzite and honed Crema Delecatto floors. The walls are made from walnut
- Wood floors on the main deck with a new area rug
- Upgraded carpet throughout all cabins
- Custom mirrored pocket door & custom sink in VIP
- Custom made glassine inserts in flybridge
- New Atmosfera Italy exterior furniture
- New cockpit chairs and table
- Starlink satellite internet

## Manufacturer Description

Ferretti Yachts 920, exhibiting all of the serene strength of a giant of the nautical world, is an exceptional yacht not just in terms of its size but also because of its innovative nature. The splendid flybridge, designed by the Ferretti Group's Product Strategy Committee and Engineering Department in conjunction with Zuccon International Project, stands out due to the ground-breaking introduction of the "wide body" concept. In addition to giving the yacht an imposing presence on the water, the raised forward section of the hull has also allowed a "wide-body" master suite to be included on the main deck. The yacht's "bold" character is emphasized by the gunwale, which continues beyond the bulwark walkways and "cuts" into the design of the windows in the master cabin. The majestic Ferretti Yachts 920 (28.49 metres LOA) instantly catches the eye. Meanwhile, the hull is 23.98 metres long, so it can be registered as a recreational craft. Its dynamic, irrepressible profile develops the stylistic design features that have led to the international success of recently launched models and have completely modernised the fleet. In addition to the raised forward section, other stunning aspects include the remarkable number of relaxation spaces and the luxurious furnishings in the outdoor areas. The magnificent interiors rival the versions found in higher category models. The pilot house is a technical area with a

“futuristic” design. The captain can run the entire yacht from here thanks to a large control station, equipped with a next-gen steering system and a number of touchscreen displays that encompass all of the on-board monitoring systems and navigation instruments.

## Standard Equipment

- Stabilizing fins zero speed
- Gyro stabilizer
- Additional insulation in the bow
- Kahlenberg horn and compressor
- Additional lights in engine room
- Strip Led under beds (All 5 cabins)
- Automatic cable reel and remote control
- A/C and heating system on fly bridge
- A/C system in engine room
- Bar cabinet in cockpit
- Custom freestanding cockpit
- Ernestomeda galley
- Additional 60 hz freezer
- Tap to fastening Gardena
- Fly bar furniture
- Wooden floor in salon and galley
- Custom flooring for main helm
- Furniture upholstery
- Sofa and armchair in main deck salon
- Salon assorted decorative cushions
- Coffee table
- Dining table and chairs
- Propspeed to all metal parts and pass cocks
- Wine cellar
- Additional fridge in corridor
- Mini bar fridge in lower deck
- Fridge in bar unit in cockpit
- Double grill with junction on fly
- Second fridge - bar on fly-
- Ice-Maker raritan on fly
- Full SIMRAD Navigation (Monitor 24")
- Carpet lower deck
- Corridor Wall upholstered
- Cabin upholstery
- Carpet in master cabin
- Reading light
- BCM lights
- Raritan ice-maker in cockpit
- Tender launching system
- Radar antenna HALO 6
- Autoidentification system AIS receiver Simrad NAIS
- Transducer B765LM
- Simrad Autopilot: OP10 control keyboard
- Multidata display Simrad IS40

- Antenna TV SAT HD7 TRIAMERICAS
- Empty Dome for KVH TV6
- TV 55" in Salon
- Electric raising device for TV 40"/65
- TV 55" in master cabin
- TV 49" in VIP cabin
- TV 28" in right guest cabin
- TV 24" in crew cabin
- Remote control signal relay IR
- Apple TV System CAD
- Installation mini mac in salon
- Audio/Video HQ
- Sirius system
- TVCC: external color camera
- PAN/TILT cameras in engine room
- CCTV switch to display more than 2 cameras
- Canopy with 4 carbon poles
- Manual Bimini at bow with 4 carbon poles
- Pilot seat in leather
- External upholstery
- Flybridge dining table
- UD dinning chairs
- Fly's Sofa
- Sun-bed on fly
- Stools on fly
- TV predisposition in cockpit
- Watertight external socket
- Main deck salon rug.
- NAVIOP: monitor touchscreen internal 15" additional - crew
- Master cabin's sofa
- Leather inlay in LD cabin doors
- USB socket for charging in cockpit glove box and salon
- Internal USB socket
- Bathrooms marble
- Painted external loudspeakers
- Master bathroom taps and fittings
- Bathroom accessories in master bathroom
- Outdoor covers
- Stainless steel Marquipt
- Sea Stair flush mounting brackets at port and starboard boarding door
- Skylight above corridor
- Stern thruster hydraulic 40 HP
- Manual glass door on salon side with new boat wood
- Smoke separator for gen.-each(22,5-27KW) 3"
- Floor: teak on fly
- Water maker recovery Aquamatic 900-2
- Searchlight ACR RCL 300
- A/C intakes in bathrooms
- Additional lights on Fly
- Light underwater light watertight - couple -

- lights underwater light -each-
- Lighting in spoiler stairs
- lights: watertight for staircase from cockpit to fly
- Dimmer for fly lights
- Dimmer lights in cockpit
- Dimmer lights in salon
- Lighting for stairs towards cabins
- One touch up/down electric curtains salon
- One touch up/down electric curtains master cabin
- One touch up/down electric curtains LD 4 cabins
- Electric blinders in the 4 cabins
- Shore fresh water intake
- Electric sliding saloon
- LED lights at bow
- Galley's fridge 60HZ
- Water softener
- Control station in the cockpit fixed with cover
- Waste mincer in galley sink 230v
- Waterline stripes
- Radar antenna painted in gray color

## Exclusions

- AB Jet tender























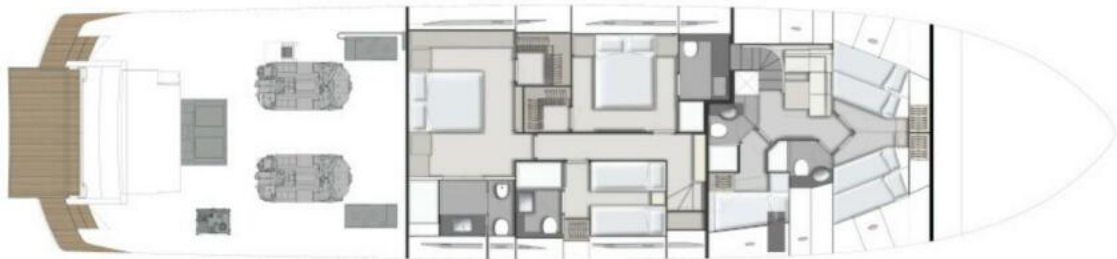




**SUN DECK**



**MAIN DECK**



**LOWER DECK**