



LOW BIDDER X

50' (15.24m) 1990 Sunny Briggs Flybridge Sportfish
Islamorada Florida United States



OVERVIEW

\$495,000

Manufacturer:	Sunny Briggs		
Engines:	2 Detroit Diesel	Hull Material:	Cold Molded
Engine Model:	8V92	Cruise Speed:	Knots
Engine HP:	735	Max Speed:	Knots
Beam:	17' 9"	Cabins/Heads:	2 / 2
Max Draft:	"	Fuel Type:	Diesel
Water:	150 G (567.81 L)	Fuel:	800 G (3028.33 L)



Joe Majcherek joem@gilmanyachts.com

1-561-346-2367

Data Sheet

Category: Sport Fishing
Condition: Used
Model Year: 1990
Documented Year: 1990
Beam: 17'9" (5.41m)
Min Draft: 4' (1.22m)
LOA: 50' (15.24m)
Cabins: 2
Heads: 2

Knots
Knots
Fuel Type: Diesel
Hull Material: Cold Molded
Hull Shape: Monohull
Air Conditioning: Yes

Fuel Tank: 800 gal (3028.33 liters)
Fresh Water: 150 gal (567.81 liters)
Builder: Sunny Briggs
Designer: Glenn Haught
HIN/IMO: BBW002450990
In Stock: Yes

Engines/Generators

Engine 1

Detroit Diesel
8V92
Inboard
735HP
548.09KW
Fuel: Diesel
Hours: 400
Year: 1989
Location: Port

Engine 2

Detroit Diesel
8V92
Inboard
735HP
548.09KW
Fuel: Diesel
Hours: 400
Year: 1989
Location: Starboard

Generator 1

Northern Lights
12KW
Hours: 800
Hours Date: 04/16/2024

Summary/Description

Built by one of the finest Carolina builders in Wanchese, NC. Only four owners since new.

Classic Carolina design sportfish with cold-molded hull and wide beam. Master stateroom forward with athwartships queen berth and private head / shower in the peak. Guest stateroom and 2nd head with a large galley down. Huge cockpit with transom live well / fish box. Detroit Diesels with approximately 400 hours since reported major overhaul, with updates more recently, including new turbos and exhaust manifolds. Newer Northern Lights generator with approximately 800 hours. The electronics have been updated with two Garmin screens, a Simrad autopilot, and VHF radios.

General Description

LOW BIDDER X is cold molded constructed with multiple alternating layers of Okume marine plywood and ¾ ounce fiberglass matting between the marine grade plywood. The entire hull has 1" foam/Mylar insulation. The forward deck has 2 ½" insulation. The complete exterior was repainted around 2007 and deckhouse windows were re-bedded. In around 2019 the boat was partially painted again. Built by one of the finest Carolina builders in Wanchese, NC. Only four owners since new.

Salon has two free standing sofas with storage beneath to port and starboard. There is a teak parquet top high-low table which can fold open to expand to a dining table. Aft is a built-in bar cabinet containing a new U-line ice cube maker and a top opening wetbar sink. The solid surface counter on top has a molded fiddle railing and a storage cabinet. Below are 4 drawers plus another cabinet below the sink. To the starboard side aft of the entry door is the main electrical panel. The deckhouse windows are tinted and there are mini-blinds up beneath the valance. To the forward starboard side of the salon is a Samsung flat panel TV and just below a LG Blu-ray player and stereo amp. Below is a countertop with cabinets below. To the portside is a large countertop which can be a serving area for the galley which is open to the salon and down to the lower deck level. Under this countertop is more cabinet storage. Carpeted sole which continues down the steps to the stateroom level. There is hanging rod storage on the headliner above the sofas.

Galley is down to portside with teak edged countertop, cove lighting, and a stainless steel sink. Aft is a large Kenmore refrigerator with freezer section/ice maker below. A 3-burner Galley Maid stove with oven is forward with metal lifting cover. Above the sink is a GE microwave oven. Lots of cabinets and drawer storage. Teak and Holly sole.

Across from the Galley is the companionway entrance to the guest head which has a separate shower stall with seat and a Kenmore stacked washer/dryer in a cabinet. White solid surface vanity top with bright lighting and mirror/medicine cabinet above, Teak and Holly sole. There is a separate door to the guest stateroom just aft on the starboard side.

Guest stateroom has upper/lower twin berths and a cedar lined hanging locker, with a carpeted sole.

Master stateroom is forward with a walk-around queen berth and cushioned clothes change seats next to both sides of the berth. The berth is athwartships with the headboard to the portside. The aft bulkhead is mirrored with a countertop and dresser cabinet below. There are two hanging lockers across to the starboard side, one is cedar lined the other is not and designated for weather gear. There are cedar soled drawers on either side of the base of the berth. Carpeted sole with a private head forward in the bow with a teak and holly sole. Galley Maid Delta head system in both head compartments (there is a holding tank). White solid surface vanity top with molded sink and bright lighting on both sides of the mirror/medicine/linens cabinet above. Triangular shower compartment with seat is all the way forward. There is also access in the shower to the anchor locker.

Electronics and Flybridge Equipment

- Garmin XSV GPS/Chartplotter
- Garmin MFD display
- Garmin radar with 6' open array scanner
- Simrad autopilot
- ICOM Vhf
- Furuno FCV 1100 recording depth sounder
- Raymarine Tridata digital info display
- Two ACR remote control spotlights
- Plastimo magnetic compass with light
- Teak helm pod with single lever controls
- Teak rimmed custom helm wheel
- Trim tab toggle switch control
- Ladderback helm and companion chairs with contour cushions
- Spray screen Isinglass enclosure
- Forward and starboard side companion bench lounges with cushions and storage beneath

Fishing Equipment and Cockpit

- Full Bausch tuna tower with lace top on flybridge and buggy top, upper control station
- Rupp triple spreader outriggers
- Rupp center rigger
- International fighting chair
- Transom live well / fish box
- Cockpit freezer, stainless lined, in tackle center
- Tackle rigging station, drawers, sink, bait cooler
- Electric reel plugs under aft cockpit gunwales
- LP reel control box in engine room
- Transom door
- Teak covering boards
- 6 flush mounted rod holders in coverboards
- 13 rod holders on two aft flybridge railings
- 4 rod holders on tower legs
- Non-skid cockpit deck with corner drain scuppers
- Fresh and Saltwater washdowns
- Cockpit spreader lights, tower mounted

Hull and Deck Equipment

- Aluminum bow rail forward and pulpit with anchor roller
- Fortress anchor with stainless chain lead and rode
- Galley Maid Ideal windlass with wildcat and foot pedal controls, deck hawser to anchor locker
- Single forward deck hatch in center of foredeck
- vanished teak half-round trim on deckhouse
- white safety grabrails on both sides of deckhouse top by side decks
- Aluminum flybridge ladder with teak treads
- Aluminum safety grabrails by top of flybridge ladder and to side of helm console
- Traditional Carolina "crowned" foredeck contour and deckhouse shaping
- Hull design has the classic broken shearline and at the transom has tumblehome contour
- Two ACR spotlights mounted on upper station platform

- Celestial TV antenna
- FBG tower control box with wheel and single lever controls, compass, and Vhf radio with external speaker
- Tower belly band cushion
- Varnished teak helm pod has chrome bezel/glass top with VDO gauges below
- Canvas covers for helm chairs, flybridge helm console, and cockpit fly canvas

Mechanical & Electrical Systems

- Detroit Diesel 8V92 TI's with overhauls reported approximately 400 hours ago
- Twin Disc transmissions
- Mathers electric engine controls with Panish single levers
- Glendinning engine synchronizer
- Recently updated exhaust manifolds and turbos, newer risers and flex hoses
- Walker AirSeeps crankcase breather system / new air filters
- Engine room mechanical gauges and start/stop
- Racor primary fuel filters, mains have vacuum pressure gauges
- Aluminum fuel tanks with sight gauges in engine room
- Sen-Dure gear coolers and several updated raw water cooling hoses
- PYI dripless shaft logs
- Oil change system with Oberdorfer pump
- Teak and Holly sole in center engine room
- Main engine raw water thru-hull seacocks replaced
- Recent Fireboy engine room automatic fire suppression tank
- Emergency manual engine stop pull cables to starboard side of flybridge helm
- Newer Northern Lights 12kW generator with around 800 hours since new
- Generator raw water sea strainer
- Recent Dayton AC freshwater system pump with accumulator tank and pressure gauge
- Tank Tender pneumatic level indicator located in galley area
- Raritan hot water heater
- Batteries in fiberglass boxes with radial shut off switches
- Sentry 12v, 60amp, 3 bank automatic battery charger
- 50amp shore power cord
- Main electrical panel in salon with circuit breakers, generator/shore power switching, AC amp and volt meters, DC volt meter
- Flybridge DC sub-panel with electronics, lights, alarm, and control circuit breakers and DC volt meter
- Six automatic/manual bilge pumps
- Shower sump pump/box
- Recent Pentair saltwater washdown/livewell pump with accumulator pressure tank
- Hynautic hydraulic steering
- Chilled water A/C system, 3 air handlers - salon, master and guest staterooms, recently installed new fresh water circulation pump
- Air conditioning unit in engine room
- Florescent engine room lighting
- Engine room blower fan ventilation system
- Fresh water spigot in engine room
- Engine room entrance from cockpit through tackle center

Custom Disclaimer

The Company offers the details of this vessel in good faith but cannot guarantee or warrant the accuracy of this information nor warrant the condition of the vessel. A buyer should instruct his agents, or his surveyors, to investigate

such details as the buyer desires validated. This vessel is offered subject to prior sale, price change, or withdrawal without notice. Buyer should assume that anything not specifically written on the spec sheet could be excluded, certainly all handheld electronics, tools, fishing tackle, dive gear, weather gear/personal safety gear, navigation charts, and personal items will not convey. Upon presentation of a written acceptable offer to purchase a complete written list of exclusions can be provided by request.



LOW BIDDER X



LOW BIDDER X



Teak Coverboards, Non Skid Cockpit Deck



Bow Rail With Pulpit And Windlass



Teak Helm Pod With Teak Rim Wheel



Spacious Salon



White Painted Wood Cabinetry



Salon Table Has Opening Leaves For Dining



U-Line Icemaker In Aft Cabinet



Newer Comfortable Sofas



Galley Down



Lots Of Counterspace



Stove And Oven



Athwartships Berth In Master Stateroom Forward



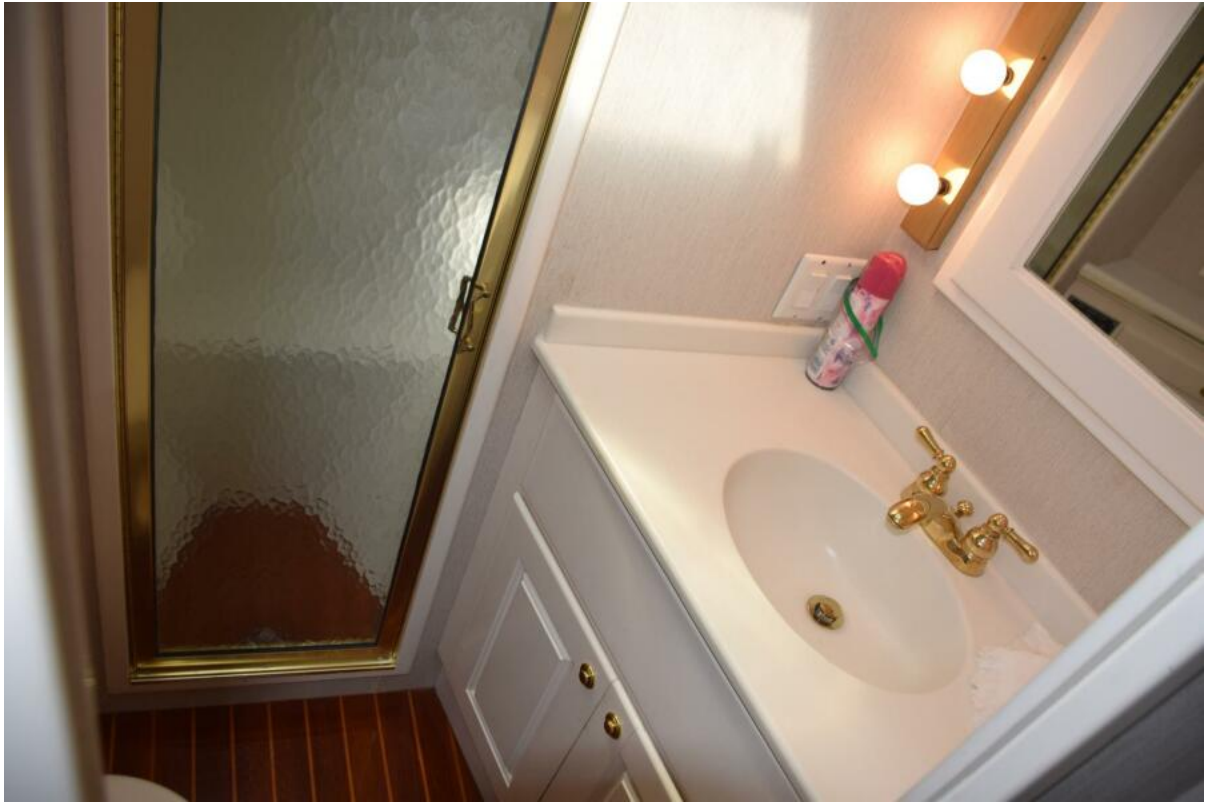
Walkaround Queen Berth With Changing Seats On Either Side Of Berth



Aft Dresser Cabinet With Mirror Above



Master Head Forward With Closets On Starboard Side



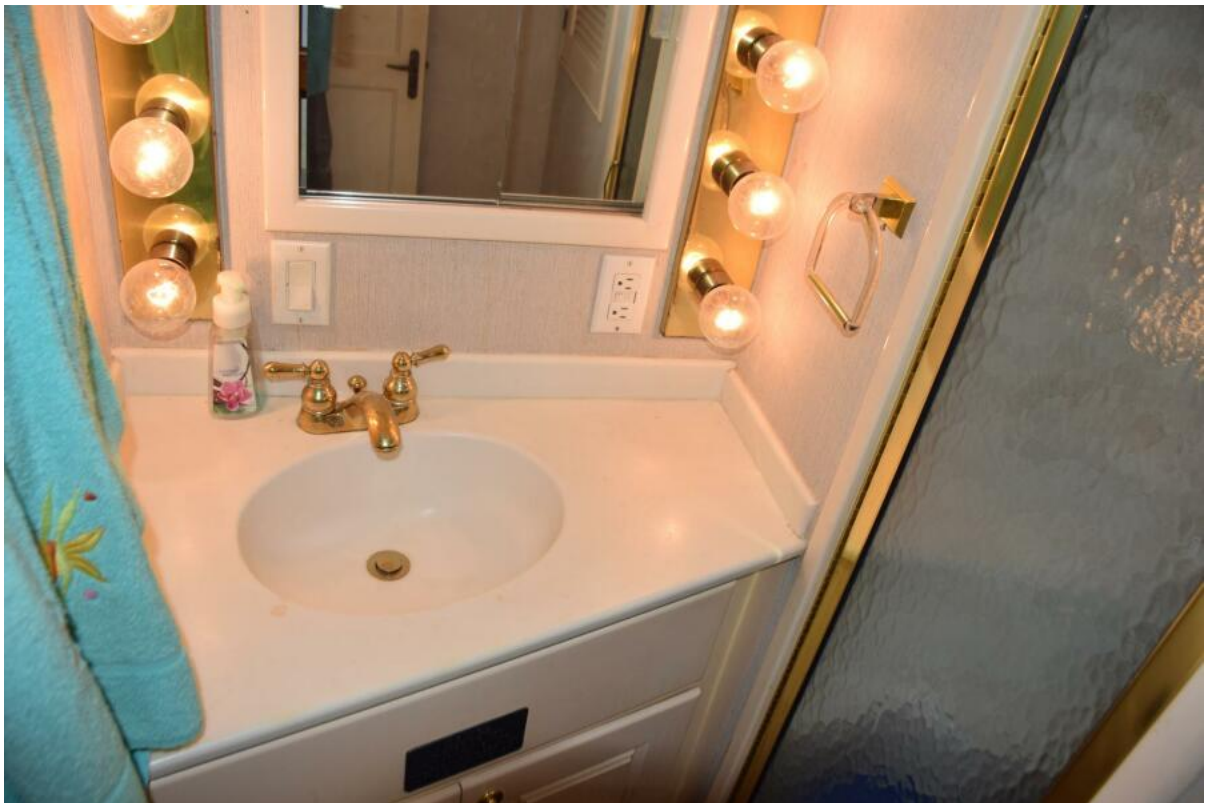
Master Stateroom Vanity With Shower In Peak



Guest Stateroom



Guest Closet



Guest Head



Guest Head And Shower Stall



Washer And Dryer



Steps Down To Galley



Salon Forward



Flat Panel TV In Salon



Cockpit Freezer



Transom Livewell Or Fishbox



Transom Door



Cockpit Tackle Center With Sink And Cooler



Large Overhang With Speakers And Lighting



Cockpit Washdown Hoses



Foredeck View From Flybridge



Flybridge Forward Lounge



Flybridge Passenger Seating



Helm Console



Helm And Companion Chairs



Garmin MFDs And Simrad AP



Helm Pod With Chrome Bezel And Gauges



Helm Console With Safety Railings



Canvas Tower Top Over Flybridge



Engine Room Entrance



Engine Room, Detroit Diesel 8v92s



Starboard Motor



Port Motor



Dripless Shaft Logs



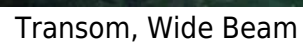
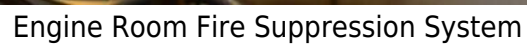
Aft Engine Room



Newer Northern Lights Generator



Forward Engine Room





Transom, Wide Beam



Cockpit And Side Deck



Flybridge With Rod Storage On Aft Railings



Teak Ladderback Helm Chairs



Pulpit, Windlass, And Ground Tackle



Carolina Crowned Foredeck



Tower With Triple Spreader Outriggers



Tower Helm



Cockpit View From Tower



Dockside



Off The Dock