



# 52 Viking Open 2016

52' (15.85m) 2016 Viking 52 OPEN with HARDTOP  
Stuart Florida United States



## OVERVIEW

**\$1,850,000**

Manufacturer:	Viking		
Engines:	2 MAN	Hull Material:	Fiberglass
Engine Model:	V-12 1400CRM	Cruise Speed:	34 Knots
Engine HP:	1400	Max Speed:	40 Knots
Beam:	17' 6"	Cabins/Heads:	3 / 2
Max Draft:	"	Fuel Type:	Diesel
Water:	186 G (704.09 L)	Fuel:	1467 G (5553.2 L)



## Data Sheet

Category: Sport Fishing  
Condition: Used  
Model Year: 2016  
Documented Year: 2015  
Beam: 17'6" (5.33m)  
LOA: 52' (15.85m)  
Cabins: 3  
Sleeps: 6  
Single Berths: 2  
Double Berths: 2  
Heads: 2

Maximum Speed: 40 Knots  
Cruise Speed: 34 Knots  
Fuel Type: Diesel  
Hull Material: Fiberglass  
Hull Shape: Modified Vee  
Hull Finish: Gelcoat  
Air Conditioning: Yes

Dry Weight: 68599 lbs  
Bow Thruster: Yes  
Fuel Tank: 1467 gal (5553.2 liters)  
Fresh Water: 186 gal (704.09 liters)  
Holding Tank: 57 gal (215.77 liters)  
Builder: Viking  
Designer: Viking  
Exterior Color: white  
HIN/IMO: VKY529121516

## Engines/Generators

### Engine 1

MAN  
V-12 1400CRM  
Inboard  
1400HP  
1043.98KW  
Fuel: Diesel  
Hours: 1300  
Year: 2015  
Location: Port

### Engine 2

MAN  
V-12 1400CRM  
Inboard  
1400HP  
1043.98KW  
Fuel: Diesel  
Hours: 1300  
Year: 2015  
Location: Starboard

## Summary/Description

The 52' Viking Open Series is one of the most capable fishing/cruising platforms on the water. This one is an excellent, lightly used example with a Palm Beach Towers hardtop and Rupp hydraulic outriggers. Notably low hours on her 1400hp MAN common rails and a custom 3 stateroom layout.

New to the brokerage market, here is a clean, low engine hour, 52' Viking Open express with EZ2CY enclosure and hardtop. This particular Viking Yacht has some customization options to the bridge deck and interior which make it appealing for cruising use as well as fishing. Completely detailed and serviced, this boat is fast and nimble underway. Teak cockpit deck and mezzanine seats with refrigeration. Cockpit fishing features include a transom and under-deck live-wells, teak rocket launcher, and hydraulic Rupp outriggers. Very comfortable climate-controlled Helm deck with bound edge carpet, settee lounge and dinette, with Stidd helm chair and forward facing double Stidd chairs to either side. Teak helm pod with bow thruster buttons on the single lever controls, plus triple Garmin displays. Preliminary listing - details are in process of being verified.

## Overview

This 2016 52' Viking open model is one of the best express style sportfish/cruiser vessels built. Viking Yachts combined exceptional build quality, blistering speed, soft ride, and luxury accommodations in the 52 to create a legendary vessel. Notably low hours on her 1400hp MAN common rails and a custom 3 stateroom layout that sets her apart from all her available sisterships on the market. On deck she has a unique command deck configuration with two seating areas with table at one side and movable ottoman/lounge on the other with custom bound edge outdoor carpet, making this area an open, air-conditioned salon and dining space. Downstairs, her owner's stateroom is forward and guest to starboard, but this Viking's 3rd stateroom has a double bed in the third rather than the traditional 2nd set of bunks. The teak cockpit has mezzanine seating, a Rocket launcher, and transom livewell. She has completed full services on the engines and a recent complete detailing. She's in excellent condition and ready to cruise or fish.

- 1400hp MAN's, low hours with 1000hr service complete
- Teak cockpit, new in 2021
- Custom 3 stateroom Layout with 2 double berths
- Custom Command deck Layout with bound-edge Berber carpet
- Palm Beach Towers Hardtop with Rupp Hydraulic Outriggers with heavy-duty back bars

## Salon/Galley

- High gloss teak interior woodwork throughout
- Air Conditioning with reverse cycle heat, Cruisair/Dometic
- Custom Amtico Teak and Holly laminate flooring
- Galley countertop and backsplash is granite, Cambria, with a Stainless steel sink and satin nickel faucet with spray nozzle hose
- Garbage disposal in sink
- Microwave convection oven in upper galley cabinet, stainless front Sharp Carousel
- Range, electric surface mounted countertop, 4 burner, Kenyon
- High velocity exhaust fan above cooktop
- Sub Zero refrigerator (2 drawers)
- Sub Zero freezer (2 drawers)
- Sliding salon door, clear/tinted Lexan with white aluminum frame
- Storage cabinets in upper galley with high gloss teak doors, under cabinet low voltage lighting

- Lower cabinets with storage and utensil drawers
- Water tank level gauge, digital display with low level alarm
- Three sets of 110v outlet plugs in Galley
- Keurig Coffee/Espresso machine
- Drink ice cube maker on bridge deck beneath portside chair in cabinet
- Central vacuum with unit connection under salon stairs
- Main electrical panels, with backlighting and digital voltage, load, and frequency meters
- Fusion MS-UD750 stereo with 2 speakers in headliner
- Rod storage locker in lieu of laundry

## **Master Stateroom, Forward**

- Air conditioning with reverse cycle heat with digital thermostat
- Bed- island double with mattress lift up top with gas pistons and maple lined storage underneath
- Mattress is "Handcraft", Viking Slumber #8
- Bedspread - with pillow shams (2)
- Drawer storage under bed, (4) large drawers
- Flooring is carpet
- Hanging locker has a teak door and maple-lined drawer beneath
- Hatch - Bomar foredeck hatch with Oceanair screen shade system
- Headboard, upholstered
- Headliner is Majilite - upgraded color and material
- Lighting - overhead LED lights and decorative indirect rope lighting from underneath bed platform
- Reading lights are overhead with separate switches
- Sheets (1 set), fitted cotton fabric
- Fusion MS-AV750 Stereo 12v CD/DVD player with 2 speakers recessed in headliner
- Teak bedside shelf
- TV, 24" flat screen mounted on wall, Samsung

## **Forward Guest Stateroom**

- Air conditioning with reverse cycle heat with digital thermostat
- Bedspread - quilted, designer style with (2) pillow shams
- Flooring is carpet
- Hanging locker is maple-lined
- Headliner - Majilite, Custom Color, 1/8" foam & tricot backing
- Lighting overhead LED lights
- Sheets and pillows- (1 set) fitted cotton fabric
- Fusion Stereo 12v with 2 speakers recessed in headliner, outboard
- Two storage drawers located under hanging locker
- Upper and lower berths with upgraded mattress "Handcraft" Viking Slumber #6
- Storage beneath lower berth that opens with hinge

## **Aft Guest Stateroom**

- Air conditioning with reverse cycle heat with digital thermostat
- Bedspread - quilted, designer style with (2) pillow shams
- Flooring is carpet

- Hanging locker, maple-lined, drawer beneath
- Headliner - Majilite, Custom color, 1/8" foam & tricot backing
- Lighting overhead LED lights
- Fusion Stereo 12v with 2 speakers recessed in headliner, outboard
- Custom extra wide stateroom with double bed in lieu of standard bunks

## Heads

The master stateroom has a private head and the guest head is located between the two guest staterooms with doors to forward guest stateroom plus a door for daytime usage.

- Air conditioning/heat with vent in soffit
- Countertops, engineered stone
- Electric heads with overboard and holding tank discharge
- Exhaust fan with vent in soffit
- Flooring, vinyl Amtico, Teak and Holly style
- Lights, overhead LED lights recessed in soffit and in ceiling
- Lower vanity with teak face
- Medicine cabinet with mirrored doors
- Receptacle, 110v - GFCI
- Shower light
- Stall shower, fiberglass with satin nickel shower fixtures and with drain to automatic sump pump in bilge
- Towel bars and rings - satin nickel

## Helm Deck

- Compass
- Teak Helm Pod with electronic control handles and bow thruster buttons in handles
- Electronic Trolling valves
- Fire system control with automatic and manual discharge
- Furuno RD33 depth finder/Sea Temp/Speed
- MAN electronic engine display gauges, updated
- Stidd Helm and companion seats. (Single, Double, Double) w/ Ultra leather fabric and upgraded Chrome bases - center Captain chair has fold-down foot rest/standing platform
- Radio box with VHF, Engine starts and shut down, Back Up engine controls, Hydraulic Rigger controls, switches for lights, ACR RCL-100 spotlight control
- Offshore systems monitoring gauge with audible and visible alarms for temp, high water in bilge, low oil pressure, exhaust temp, generator etc.
- U-shaped teak dinette lounge seating to Starboard with large storage drawer under forward seat, top opening storage beneath aft seat
- Standard port storage bank custom made at Viking into additional L-shaped seating area with storage underneath, custom built large ottoman fits into port seating to create lounge area
- Cabinet behind port helm seat with storage
- Icemaker in cabinet under port helm seat base
- Custom overhead rod storage cabinet built into hard top
- Bomar hatches (3) over helm seating area
- Receptacle (110v) and HDMI located to the starboard side of electronics pod to plug in portable TV to Satellite feed
- Fusion stereo, 12v, with (4) JL Audio Speakers

- Windshield, molded fiberglass
- Windshield Wipers and washer with speed adjustment (3)
- Black Textiline windshield mask, 2022
- Helm Deck reverse-cycle air conditioning with digital thermostat in helm console, 36,000 BTU, Cruisair/Dometic

## Electronics and Navigation

### RADAR:

GARMIN 1206 XHD2 radar 12KW with 6' Updated array, 72-mile range

GARMIN GPSMAP8215 15" MFD preloaded with coastal charts

### CHARTPLOTTER:

(2) GARMIN GPSMAP8215 15" MFDs preloaded with coastal charts

GARMIN remote input device grid

### NETWORK:

GARMIN GMS10 network expander

WIFI adapter for BlueChart mobile

GARMIN GNT10 N2K transceiver

GARMIN GXM52 weather antenna, Sirius XM weather

GARMIN AIS 600 AIS transponder

### SOUNDER:

GARMIN GSD-26 CHIRP video sounder module

AIRMAR CM599LHW 2-3KW transducer 28KHZ-60KHZ 130 KHZ-210 KHZ wide beam

### DIGITAL DEPTH:

FURUNO RD33 data organizer and display

FURUNO 235DHTLMSE HI-PRECTIP2 transducer

### AUTOPILOT:

GHP reactor autopilot

GARMIN AP shadow drive sensor

GARMIN RPU GRF10 sensor

### VHF:

ICOM M604 VHF radio



SHAKESPHERE PHASEIII 6400 VHF antenna

STEREO:

FUSION MS-UD750 marine stereo

FUSION NRX2001 wired remote

JL AUDIO 7.7" white coaxial speakers command bridge

JL AUDIO M600/6 amplifier

SAT TV:

KVH TRACKVISION TV5 with IP-enabled TV-HUB A

DSS receiver HD DirectTV network

COMMAND BRIDGE:

Outlet & HDMI for SAT TV feed mounted on side of electronics pod

COCKPIT:

GARMIN GPSMAP 8212- 12" MFD preloaded with coastal charts

UNDERWATER LIGHTS:

4 underwater lights out of transom

## **Palm Beach Towers**

- Custom molded hardtop 52' express with single perimeter rail and brushed pipe
- Recessed lights., Lumitec tri-color LCD
- Molded 2-in-1 Lumitec LED spreader light pod
- Nav lights port and starboard molded into corners of hardtop
- Enclosure 4-sided track-to-track EZ2CY
- Masthead light anchor light
- Mount horns (chrome) on signal mast
- ACR LED spotlight mounted in front of radar scanner
- Rupp outriggers 32' - double spreader, aft laydown
- Rupp outrigger hydraulic system multi action layout and lay aft
- Rod holders with steps welded to aft legs (4 each)
- Rod holders welded across aft side of hardtop (6)
- Rupp halyard grommets mounted in cockpit gunnels
- Molded rod locker in hardtop
- Install Bowmar hatches forward top of hardtop (3)
- Install Viking supplied radar mast on top of rod locker
- ACR EPIRB in hydro-static release mount on aft hardtop

## **Cockpit**

- Dockside water connection with pressure reducing valve in port or starboard cabinet under forward gunwale
- Cabinet with storage for gaff, located under gunwale starboard
- Engine room access with door and ladder
- Engine room entrance with gas pistons, center beneath steps to bridgedeck
- Freshwater wash down with hose bib located in cabinet under forward gunwale
- Gaskets for all lids and access doors
- Indirect rope tricolor (red, white, blue) lighting under coaming
- Lazarette hatch with access to steering, trim tabs, drain pumps
- Lighting, recessed tri color (red, white, blue) lights in hardtop overhang
- Livewell in transom box with window and light, solid non-skid hinged lids
- Teak cockpit deck, new 2021 (groomed 2024)
- Cockpit "fly" canvas cover to transom, new 2021
- Cockpit Sunfly dockside cockpit shade with aft poles to fit in rod holders, new 2021
- Observation mezzanine, aft facing lounge seating with Sunbrella covered cushions, hinged seats with storage under
- Refrigeration under port and starboard mezzanine steps and under port mezzanine seat (digital thermostats by engine room entry)
- Mezzanine step outfitted with Teak
- Recessed in-deck fish box, live well tub and dunnage box insulated and removable with pump out and drain plate with large holes for easy pump out and cleaning
- Rod holders, (6) flush mounted
- Four electric reel plug outlets under gunwale, 12v
- Seawater wash down with pump in engine room and supply at cabinet under forward gunwale to keep deck clean while fishing
- Self-bailing cockpit with large cockpit scuppers with stainless corner grates
- Stainless steel cleats and recessed hawse pipes
- Stainless steel gas pistons on all hatches and lids
- Stereo 12v with 2 speakers under gunwale, tied into helm deck stereo
- Storage coolers in mezzanine step, both sides
- Bluewater Teak XL rocket launcher with 11 rod holders, 2 drink holders, rigging tray, and drawer, 4-inch chrome stanchion, new '22
- Transom fishbox, molded-in
- Transom swim steps at transom door
- Walk-through transom door with lift gate
- Y-valve for fresh and saltwater washdowns
- Garmin screen mounted into cockpit haunch
- Fusion stereo remote mounted into cockpit haunch

## Electrical System

- 24v DC ship's service throughout
- 24/12v power supply with breakers on command deck for electronics
- Anchor light/navigation lights
- Batteries, (2) independent 24v banks mounted in fiberglass storage box
- Battery chargers, (2) with thermal cutoff and switching system for complete integration
- Battery distribution panel with battery cutoff and charging system breakers
- Battery parallel system for main engines and generator start
- Bonded electrical system with ground plate



- Color-coded, labeled and numbered wiring system with corresponding drawings
- Dimmers 24v DC interior lighting throughout
- Engine room lights, DC with LED/AC backup with switch at engine room entrance
- Generator, Diesel - Onan 21.5 kW - Approximately 1450 hours
- E-QD (electronic quiet diesel) Series, user-friendly with electronic governing allowing voltage and electronic frequency control (R)
- Glendinning cablemaster (1) with 3 wire grounded cord, (1) Additional 50 amp/220v inlet with 50' cord
- Instrument panel lights for flybridge and main electric panel
- Lighting, overhead LED lights recessed in ceiling and rope type décor lights, 24v throughout
- Master electrical control panel located in salon with 24v/110v circuit breakers, individual switching for shore 1, shore 2, or generator supply and gauges for electrical supply, voltmeter, amp meter, and frequency
- Receptacles, 110v duplex with GFCI throughout
- RG6 TV cable to accommodate satellite system

## Mechanical Equipment

Twin 1400hp M.A.N diesels with ZF Transmissions. 10-cylinder 1400CRMs with 1000-hour service completed by Ace Marine. ZF controls with SmartCommand display panel and emergency backup controls. Boning MMDS-CLC 6.5 LCD engine displays have been renewed.

- Air Conditioning - direct expansion zoned with reverse cycle heat for complete climate control throughout the interior and with individual temperature controls for staterooms and salon
- A/C pressurized freshwater system with on deck freshwater fill and cockpit dockside supply inlet with pressure reducing valves
- Bilge pumps linked into monitoring system and connected to switches for automatic and manual operation
- Centralized seawater system with two new Grundfos pumps
- DC power-assist hydraulic steering independent of engines
- Deck pump out fitting and direct overboard pump out for holding
- "Delta T" engine room ventilation system with supply and discharge fans for proper fresh air supply and water intrusion suppression
- Engine room entrance package consisting of gauges for digital tachometer, engine water temperature, engine oil pressure and engine room mounted engine start and stop switches for easier viewing and accessibility
- External sea strainers for main engine pick ups
- Fire suppression system, automatically or manually operated and tied into main engine and generator ignition systems with override
- Freshwater supply in engine room for general maintenance and cleaning
- Fuel and oil lines, flexible, USCG approved, aircraft type
- Fuel priming pumps electric 24v electric
- Fuel transfer system, 24v DC pump
- Sidepower 24v DC bow thruster with joystick and button controls on helm levers
- Internal sea strainers for generator and all other sea water pick ups
- Mufflers - engines, in-line type with surge tubes in engine room
- Mufflers - lift generators with gas water separator for cleaner, quieter operations
- Oil changing system, gear type pump for main engines, transmissions, and generator with pump out line run to cockpit
- PEX plumbing, freshwater system plumbing with manifold system shut off in engine room and forward bilges
- Propellers - Advanced design cambered blade sections for optimum performance. Nibral alloy for maximum durability

- Racor fuel/water separator filters for main engines and generator clear bowl type, top loading for convenient replacing - includes vacuum gauge for fuel filter restriction - Awlgrip white
- Rudders, stainless steel, with composite rudder bearing and drip-less seal laminated into hull
- Seacocks, bronze, ball-type sea valves and strainers for all thru-hulls below the water line-Awlgrip white
- Shafts - 2 Aquamet high-strength stainless steel, double-taper with machined keyway and thrust plate at main engine couplings
- Struts - thru-water, Nibral
- Trim tabs, dual piston with individual controls with the trim tab covers on transom, Lenco, with position indicator display at helm
- Valve off engine intakes for use as emergency bilge pumps (2)
- Water heater quick recovery, electric

## Miscellaneous

- Anchor with line and chain
- Bow Pulpit and brushed aluminum full bow rail
- Windlass
- Bonding system anode on transom
- Bilges white Awlgrip painted with magnetic light switches
- Painted rub rail to match gel coat

## Recent Services/Updates

- 2022 Last bottom paint, Props scanned, Prop speed on all underwater running gear
- June 2021, 1000-hour engine services completed including cooling system and valve lash adjustments (1050 hour mark)
- 2023 Generator and Mains serviced
- 2023 New Garmin radar scanner, 6-foot open array, 12kW
- Feb. 2024 Hull and decks buffed and waxed, complete detail
- Feb 2024 Teak decks groomed with light sanding
- 2022 New Central SeaWater system pumps
- 2022 Fire systems re-certified
- Aug 2021 New wiper motor installed as well as 3 new pantograph wiper arms and blades
- Aug 2021 Hydraulic outriggers serviced, new heavy bars added
- Aug 2021 (4) new underwater lights installed
- Aug 2021 New gulper pump installed for bilge dry out pump
- Aug 2021 New designer bedding installed in forward and port bunk stateroom
- 2023 Head system serviced, hoses, switches, & vacuum pump replaced
- 2023 All AC's serviced

## Disclaimer

The Company offers the details of this vessel in good faith but cannot guarantee or warrant the accuracy of this information nor warrant the condition of the vessel. A buyer should instruct his agents, or his surveyors, to investigate such details as the buyer desires validated. This vessel is offered subject to prior sale, price change, or withdrawal without notice. Buyer should assume that anything not specifically written on the spec sheet could be excluded, certainly all handheld electronics, tools, fishing tackle, dive gear, weather gear/personal safety gear, Direct TV receivers, navigation charts, and galley service items will not convey. Upon presentation of a written acceptable offer to purchase a complete written list of exclusions can be provided by request. A reasonable number of dock lines, fenders, and

lifejackets will be included in the sale.

Engine hours are as of the date of the original listing and are a representation of what the listing broker is told by the owner and/or actual reading of the engine hour meters. The broker cannot guarantee the true hours. It is the responsibility of the purchaser and/or his agent to verify engine hours, warranties implied or otherwise and major overhauls as well as all other representations noted on the listing brochure.



Profile 52' Viking Open With Hardtop



Side Deck





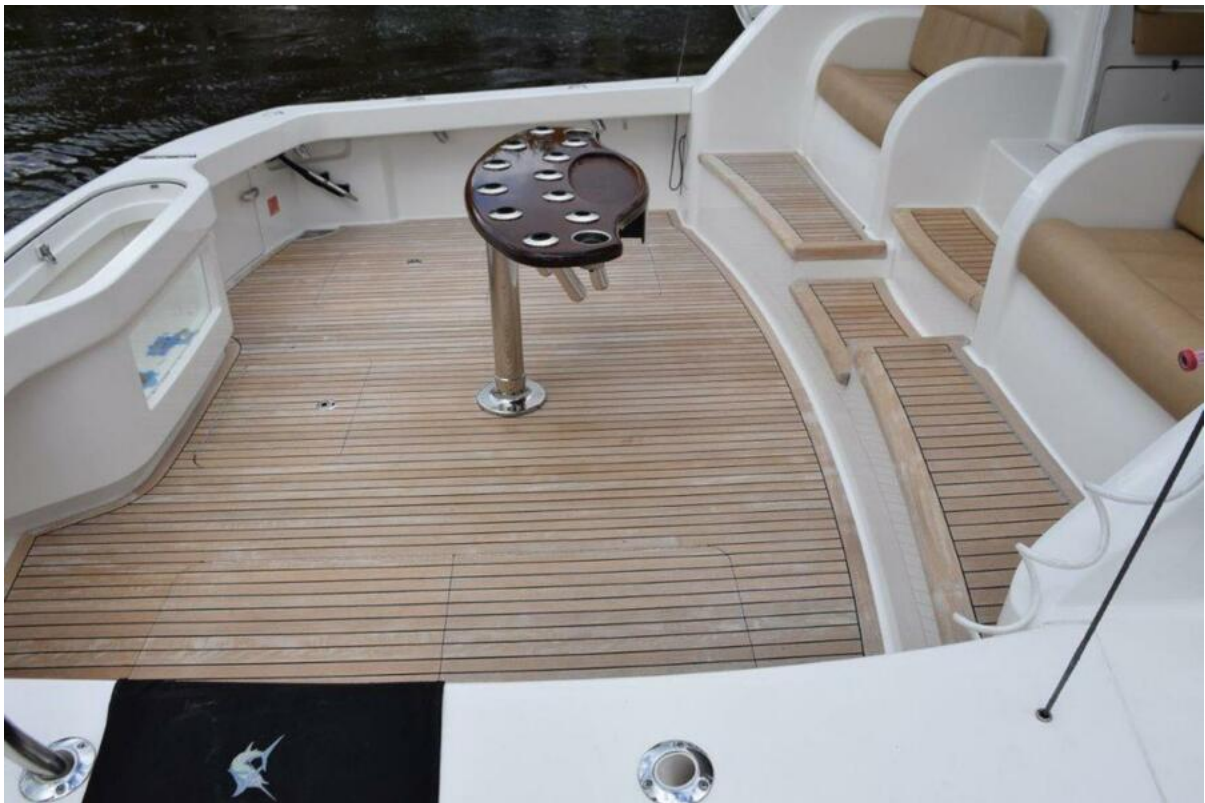
Foredeck



Profile 2



Dockside



Cockpit with Mezzanine





Teak Cockpit, New 2021



Rocker Launcher and Mezzanine Lounges



Helm Deck



Helm Deck Settee with Large Custom Ottoman, Portside





Dinette Lounge, Starboard Helm Deck



Helm Chair and Starboard Side Dual Bench Seat



Helm Chair and Portside Dual Bench Seat



Stidd Chairs





Triple Garmin Touchscreen MFDs



Helm Displays



Helm Deck Dinette, Starboard Side



Portside Helm Deck Lounge





Stidd Chairs



Teak Helm Pod with Thruster Buttons on Levers



Lower Cabin Entry



Sub Zero Drawers





Galley



Sliding Door



Master Stateroom



Master Berth





Master Stateroom TV and Closet



Master Head Vanity



Master Head and Shower Stall



Aft Guest Stateroom





Forward Guest Stateroom



Forward Guest Stateroom and Closet



Companionway View of Forward Guest and Guest Head Entry



Guest Head





Guest Head Shower



Guest Head Vanity



Mezzanine and Helm Deck Stairs



Garmin and Fusion In Cockpit Haunch





Below Deck Fishbox, Portside



Below Deck Livewell and Storage Well, Starboard



Mezzanine Step, Portside



Mezzanine Step, Starboard





Beneath Starboard Mezz Lounge Seat



Beneath Portside Mezz Lounge Seat



Transom Door and Gate



Overhead Rod Storage Locker In Hardtop



Rod Storage on Aft Hardtop



Rupp Hydraulic Outriggers, Excellent Gelcoat Shine





Signal Mast and Antennas on Hardtop



Pulpit and Windlass



Engine Room Entryway



Engine Room





12-Cylinder Common Rail MAN 1400HP



Starboard Motor





Front of Portside Motor



Port Motor



Generator and Primary Fuel Filters



Power Steering





Central Seawater System



Aft View





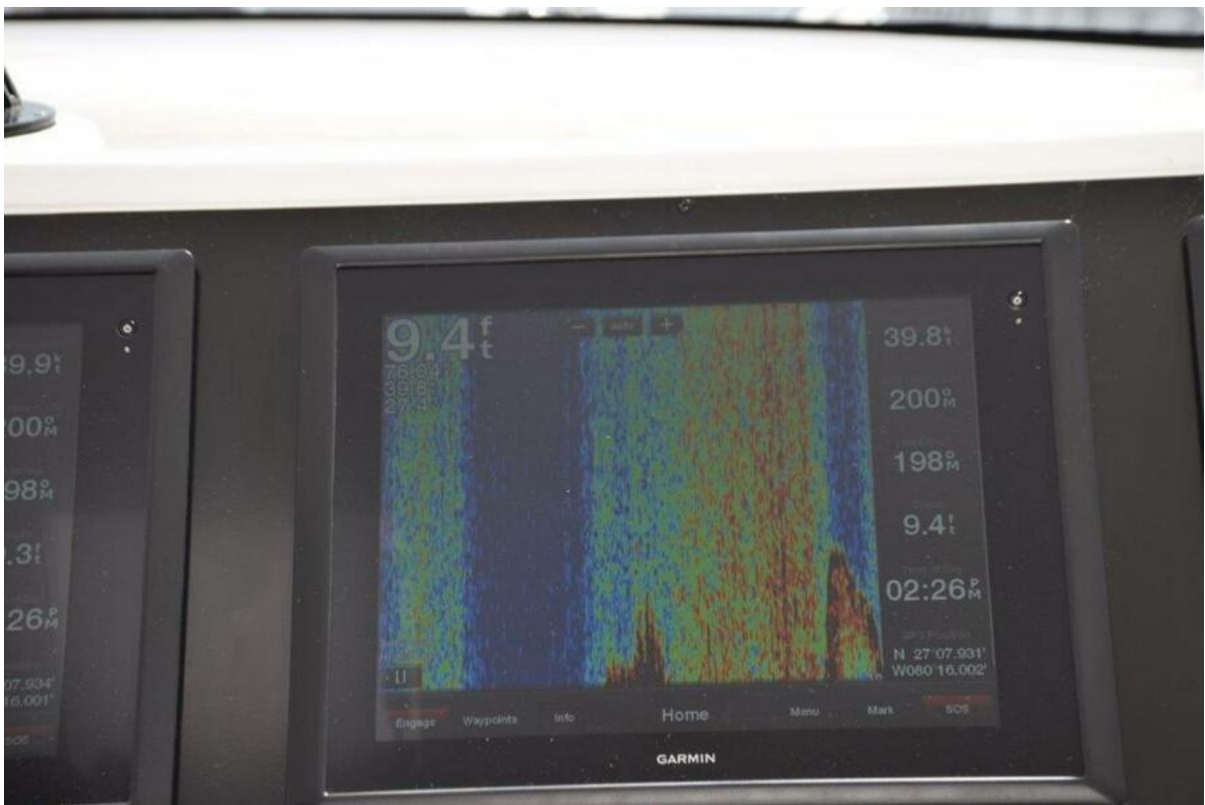
Profile 2



34 Knot Cruising



Making Way



A Touch Below 40 Knots WOT





Profile 3



Profile 4





Profile 5



Aft Fly Canvas Cover