



WASSAILING

46' (14.02m) 1995 Grand Banks Classic, stabilized with thruster
Orange Beach Alabama United States



OVERVIEW

\$254,000

Manufacturer:	Grand Banks	Hull Material:	Fiberglass
Engines:	2 Caterpillar	Cruise Speed:	14 Knots
Engine Model:	3208TA	Max Speed:	18 Knots
Engine HP:	375	Cabins/Heads:	2 / 2
Beam:	14' 9"	Fuel Type:	Diesel
Max Draft:	"	Fuel:	600 G (2271.25 L)
Water:	278 G (1052.34 L)		



Joe Majcherek joem@gilmanyachts.com

1-561-346-2367

Data Sheet

Category: Aft Cabin
Subcategory: Trawlers
Condition: Used
Model Year: 1995
Documented Year: 1994
Beam: 14'9" (4.50m)
Min Draft: 4' 6" (1.37m)
LOA: 46' (14.02m)
LOD: 47' 1" (14.35m)
Cabins: 2
Double Berths: 2
Heads: 2

Maximum Speed: 18 Knots
Cruise Speed: 14 Knots
Fuel Type: Diesel
Hull Material: Fiberglass
Hull Shape: Semi Displacement
Air Conditioning: Yes

Displacement: 42960 lbs
Stabilizers: Standard and Zero Speed
Stabilizer Brand: Naiad
Bow Thruster: Yes
Fuel Tank: 600 gal (2271.25 liters)
Fresh Water: 278 gal (1052.34 liters)
Holding Tank: 40 gal (151.42 liters)
Builder: Grand Banks
HIN/IMO: GNDF0163K495

Engines/Generators

Engine 1

Caterpillar
3208TA
Inboard
375HP
279.64KW
Fuel: Diesel
Hours: 4600
Year: 1994
Location: Port

Engine 2

Caterpillar
3208TA
Inboard
375HP
279.64KW
Fuel: Diesel
Hours: 4600
Year: 1994
Location: Starboard

Generator 1

Northern Lights
12KW

Summary/Description

WASSAILING is a 46' Heritage Classic with the galley-up. Powered by a pair of serviced Caterpillar 375hp 3208TA diesels with a Wesmar bow thruster and Naiad stabilizers. WASSAILING has just come out of the boatyard after getting her varnish refreshed, stabilizers serviced, and a bottom job.

Here is a 46' Heritage Classic with the galley up arrangement. Powered by a pair of serviced Caterpillar 375hp 3208TA diesels with a Westmar bow thruster and Naiad stabilizers. Beautiful teak interior has upgraded granite galley countertops with some newer appliances, plus a dedicated pantry/laundry area. A galley up, two stateroom general arrangement. Master stateroom aft cabin has a queen walk-around berth with plenty of windows and an aft exit door to the cockpit. Extra custom drawer storage starboard and a bureau dresser to port in the Master, plus a nice private head and shower. The forward stateroom has a large V-berth that has filler cushion to make into a full berth. She has a 2005-model Novurania tender with 20hp Honda 4-stroke outboard and a UMT davit. The flybridge has a sturdy bimini top which is incorporated into an aluminum arch with a newer KVH sat TV dome antenna. There are two mounted helm chairs by Llebroc which are adjustable with contour cushions and footrests. The bridge also has a dinette lounge. **WASSAILING** had come out of the boatyard in early 2023 after getting her varnish refreshed, stabilizers serviced, and a bottom job.

This boat comes to market with an owner who is committed to the sale process. Most photos were taken 3/16/23, a few of the profile photos are older.

Description

Here is a 46' Heritage Classic with the galley up arrangement. Powered by a pair of serviced Caterpillar 375hp 3208TA diesels with a Westmar bow thruster and Naiad stabilizers. Beautiful teak interior has upgraded granite galley countertops with some newer appliances, plus a dedicated pantry/laundry area. A galley up, two stateroom general arrangement. Master stateroom aft cabin has a queen walk-around berth with plenty of windows and an aft exit door to the cockpit. Extra custom drawer storage starboard and a bureau dresser to port in the Master, plus a nice private head and shower. The forward stateroom has a large V-berth that has filler cushion to make into a full berth. She has a 2005-model Novurania tender with 20hp Honda 4-stroke outboard and a UMT davit. The flybridge has a sturdy bimini top which is incorporated into an aluminum arch with a newer KVH sat TV dome antenna. There are two mounted helm chairs by Llebroc which are adjustable with contour cushions and footrests. The bridge also has a dinette lounge. **WASSAILING** had come out of the boatyard in early 2023 after getting her varnish refreshed, stabilizers serviced, and a bottom job.

This boat comes to market with an owner who is committed to the sale process. Most photos were taken 3/16/23, a few of the profile photos are older.

Overview-Walkthrough

Current owner has had this updated Grand Banks for a little over 7 years and a change of boating style has resulted in her coming to market. Both current and previous owner have been great stewards of this vessel and the next owner will continue to benefit from many improvements.

Entry to the cabin is through either port or starboard side doors. The starboard side door is adjoining to the lower helm which is to the forward end of the deckhouse, port door is more mid-ships entering the Salon area which is aft of the L-shape galley which is located up and forward on the portside. Teak parquet flooring is nicely finished with a center rectangular area rug and a teak fold up hi-low dining table in the center of the salon area. Aft to portside is a large,

comfortable, L-shaped settee lounge with Black ultra-leather custom cushions. Across from the settee to the aft starboard portside of the salon is a custom teak wall cabinet housing a newer, 32-inch, flat-panel TV with a Grand Banks teak armchair just below, upholstered in the matching black ultra-leather. There are also 3 high-quality teak folding chairs that can be used here or elsewhere around the boat. Between the settee and the forward helm on the starboard side is a teak cabinet with refrigerator/icemaker, bar/bottle storage cabinets, and drawer storage. Throughout the interior there is furniture-quality teak cabinetry, teak parquet sole, Hunter-Douglas shades in the salon and aft cabin, beveled edge mirrors and low voltage accent lighting, as well as LED lighting used wherever practical. There are also TVs in both staterooms as well as a daylight/outdoor TV which is mounted on the flybridge.

Moving aft down steps to the Master stateroom which has a walk-around queen berth, private head (portside), separated door shower stall (starboard side), loads of drawer/closet storage, a small desk/dresser to the aft portside corner, and an access door/hatch that opens to the cockpit.

The forward one-third of this boat has been somewhat customized for optimum use for a cruising couple or liveaboard. The steps going down to the forward cabin area can be lifted allowing access door to the engine compartment. Next to the stairs (portside) is a large storage compartment with room for spare parts/tools. Next forward on the port side is a large pantry with multiple storage closet/cabinets with shelves and a freezer. One cabinet here has all the builder manuals and equipment guides in binders. This pantry area storage can thoroughly supplement the galley if needed for extended trips or stays aboard. Across the companionway to the starboard side is another service area with a newer LG washer/dryer combo unit and additional shelves and storage. Further forward on the starboard side is the guest/day head which has a separate shower stall and there is a door between the pantry and the steps up to the salon which provides privacy for guests. Guest cabin has a large V-berth which has a filler to make the berth full. There is a hanging locker, drawer storage and a TV.

Hull and Deck Equipment

- Lofrans Tigres Windlass, vertical drums, 12V with foot pedal operation at base of pulpit structure and small drum windlass for Fortress anchor
- Two mounted anchors, Fortress FX-37 with chain lead and nylon rode ; Delta Plow anchor with 250' chain and chain claw
- There is a spigot on the bow for anchor washdown
- Kiwi anchor bridle
- Sunpad cushions on forward deck house
- Custom stainless-steel side deck railings with opening gate by portside cabin door. These railing were new in 2010 and are much more substantial than the standard railing. They are oval shaped, similar to the handrails on GBs Aleutian model vessels.
- Walk-through gate door (with keeper) in transom from cockpit with steps down to swim platform and fold out 4-step swim ladder
- UMT electric dinghy davit
- 10'6" Novurania RIB tender with 20hp Honda 4-stroke outboard with wheel helm console and cushioned bench seat. Tender is mounted on aft trunk cabin area on UMT custom cradle and has canvas cover/engine cover
- Emergency canister life raft
- Lifesling, throwable
- EPIRB
- Mast with cable stays and boom rigged for steadying sail (newer sail aboard, stored in flybridge cabinet). Boom can be used as a backup dinghy lift
- Floodlights facing aft mounted on mast
- Cellular phone antenna mounted on portside above on the forward deckhouse
- Bimini top is approximately 4 years old and there is a three-sided Isinglass weather enclosure with U-zip opening panels (3 forward, one on each side)
- Forward of the flybridge helm is a 5-panel Lexan venturi windscreen which is framed by the canvas panels of the

Isinglass enclosure

- Aluminum radar arch fortifies the strength of the Bimini top (can be folded down as well as the Bimini top and mast if necessary)
- Arch has lighting beneath to illuminate bridge, on a dimmer switch
- Two folding deck chairs on flybridge
- Aft flybridge railing has matched canvas weather covers
- Sunbrella canvas covers for flybridge seating, table, and helm console
- Sunbrella canvas covers for foredeck hatches
- Half round teak trim on deckhouse and around side doors has been painted out to match deckhouse and reduce maintenance
- Varnished teak cap railing and transom - July 2022 was stripped to bare and built-up to finish coats
- Teak flag-mast centerline aft mounted on cap rail
- Bow pulpit has standard gauge stainless railing with teak burgee mast centerline up
- Transom canvas cover
- Front windshield sun cover, no windshield wipers
- Teak decks on flybridge only (plus pad on truck deck + steps), main deck is currently being refinished with non-skid
- Large lazarette storage area beneath aft cockpit deck
- Dual trumpet air horn mounted centerline forward beneath flybridge overhang
- Outside freshwater shower wand in storage box on aft deck, hot/cold mixer
- Magma stainless BBQ grill with canvas cover mounted on railing
- Analog gauges at both helms with Tachometers, Engine coolant temp, Oil pressure, and amperage
- Brass Weems and Plath ships clock mounted on aft salon wall up top, along with a W/P barometer and Boston tide clock
- Teak safety/sea railing down center of salon headliner
- Underwater lights at transom

Electronics and Navigation Equipment

Flybridge Helm Station:

- Raymarine E120 (new display) chartplotter/GPS/Radar/depth sounder, mounted in custom fiberglass pod unit
- Open array radar scanner, Raymarine, has a 72-mile capability
- Simrad AP21 autopilot with handheld remote control
- Furuno RD-30 depth sounder
- ICOM M-602 Vhf radio
- CommandMic II full function remote for lower helm unit operation
- 4-inch Ritchie magnetic compass
- Westmar bow thruster joystick
- Raymarine camera is mounted on mast
- Bennett trim tab rocker switches and windlass remote control

Lower Helm Station:

- Raymarine E80 (new display) chartplotter/GPS/Radar/depth sounder, mounted in teak cabinet
- Furuno GP-32 GPS, backup unit
- Simrad AP21 autopilot with handheld remote control

- Autohelm digital depth, speed, and wind speed
- ICOM M-602 Vhf radio
- CommandMic II full function remote for upper helm unit operation
- Uniden ES UM525 Vhf radio/hailer
- Alden Navtex weather data receiver
- ATT spotlight control
- 5-inch Richie magnetic compass
- Wesmar bow thruster joystick
- Bennett trim tab rocker switches and windlass remote control
- Salon has a Clarion Stereo system with USB input plug, FM/AM radio, and Sirius radio ready with a remote control unit on flybridge controlling 4 Kenwood speakers. Additional speakers in salon headliner and master stateroom
- Sky-Vu flat panel TV mounted to portside radar arch on flybridge
- KVH Sat TV dome (newer) mounted to port radar arch
- Dummy dome on starboard arch houses Raymarine GPS antenna
- Hailer speaker mounted on flybridge brow

Electrical System

- Northern Lights 12kW generator in sound shield enclosure
- 50amp shore power inlet on the foredeck and a Glendinning cablemaster shore cord retractor on the aft deck (new cable in '15), also 50 foot 50amp shore cord for extension or foredeck usage
- 3 banks of engine starting batteries and 2 banks of Inverter/house batteries with Perko rotary shutoff/selector switches at main electrical panel in salon are next to lower helm
- Freedom, 12V 150amp inverter/charger with Xantrex system control panel, 3000watt
- ProMariner ProNautic 12V 50amp automatic battery charger (recently new)
- Newmar galvanic isolator
- Xantrex Pathfinder battery combiner, can provide paralleling all banks except thruster
- Separate battery bank and charger for bow thruster
- GFI outlets
- Cable TV and Telephone inlet plugs, foredeck and aft deck
- Seaward 20 gallon hot water heater, electric, plus plumbed to port main heat exchanger
- Three LED surface mounted underwater lights

Engines and Mechanical

- Morse engine controls
- Glendinning engine synchronizer
- Dual Racor primary fuel filters for main engines
- Engine oil change pump system
- Flo-Scan fuel monitoring system
- Engine intake diverter valves for emergency engine room bilge/flood pumping
- Naiad Stabilizers, model 173, hydraulic fins with hull seals recently renewed
- Wesmar DC bow thruster
- Engine room fire suppression system
- 2 Groco 12V fresh water system pumps with selector switch and accumulator pressure tank
- SeaLand Vacu-Flush fresh water toilets
- Holding tank macerator discharge pump or pump out deck outlet on portside
- 2 shower sump pump boxes
- 3 separate zones of reverse-cycle Marine Air A/C with digital thermostats
- Manual cable/quadrant steering, rudder tie bar has been renewed
- Emergency tiller is stored in aft bilge compartment

Custom Disclaimer and Exclusions

The Company offers the details of this vessel in good faith but cannot guarantee or warrant the accuracy of this information nor warrant the condition of the vessel. A buyer should instruct his agents, or his surveyors, to investigate such details as the buyer desires validated. This vessel is offered subject to prior sale, price change, or withdrawal without notice.

WASSAILING is still in use by her owners and as such there are items which may be in the photos which are excluded from the sale. Specifically excluded are all diving/ fishing gear and tackle, tools, handheld electronics and binoculars, foul weather gear, paper charts, and personal effects. A complete list of exclusions can be provided upon request when accompanied by an acceptable written offer.

There is a Sea Recovery reverse-osmosis watermaker aboard that was reportedly pickled when this owner purchased the vessel and has not been used during the past 7+ years. Operation is not known. Will be included, but only if in current state.



Profile









Dockside Fresh Varnished Transom



UMT Davit and Novurania RIB



Flybridge with Double Thick Cushions and Arch Mounted Daylight TV



Flybridge Helm



Flybridge with Enclosure



Llebroc Helm and Companion Chairs



Flybridge Dinette



Galley with Granite Countertops



Ultra-leather Salon Settee with Storage Beneath



Lower Helm



Naiad Stabilizers, Radios and Helm Accessories



Expanding Teak Hi-Lo Table



Salon Flat Panel TV



Refrigerator and Stovetop



Icemaker Refrigerator



Microwave and Trash Compactor



Aft Master Stateroom



Master Head -portside



Solid Surface Countertop



Separate Shower Closet to Starboard Side



Walkaround Queen Berth with LED Reading Lights



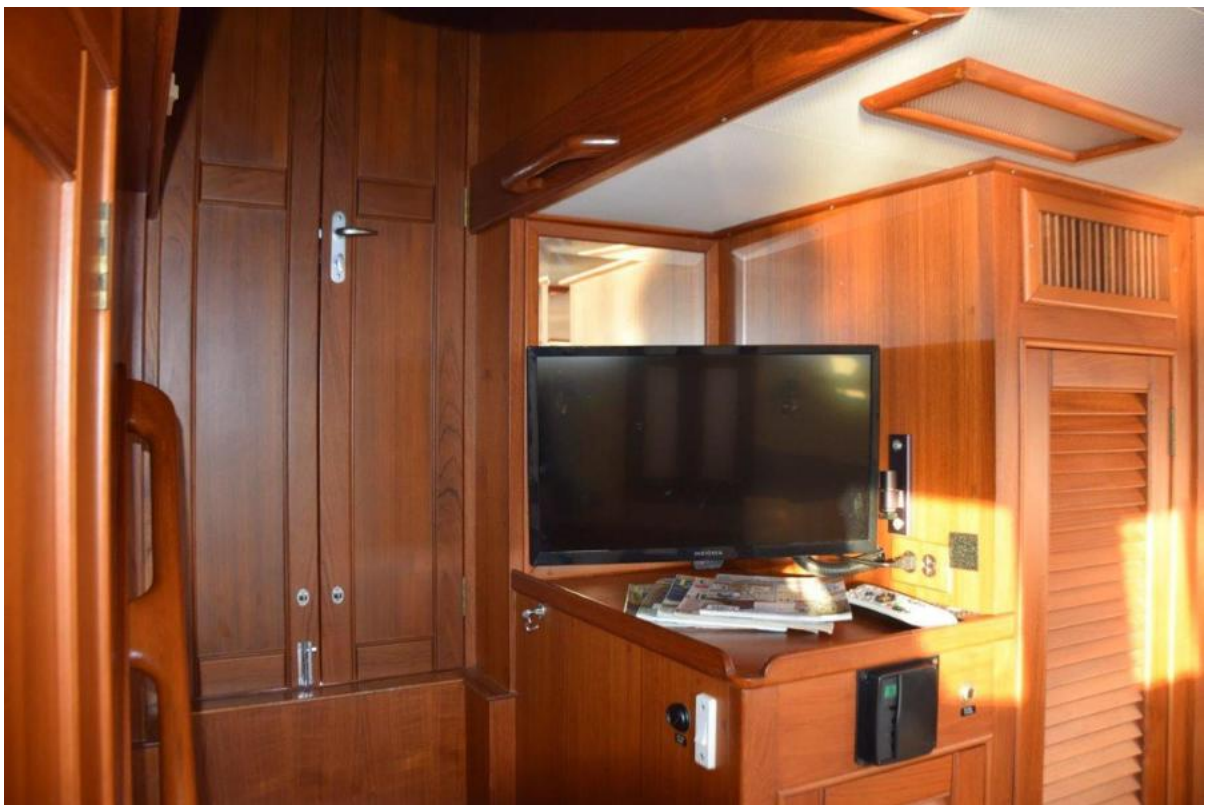
Desk Dresser to Portside



Portside Dresser Drawers



Starboard Side Dresser Drawers



Master Stateroom TV and Salon Door Closed



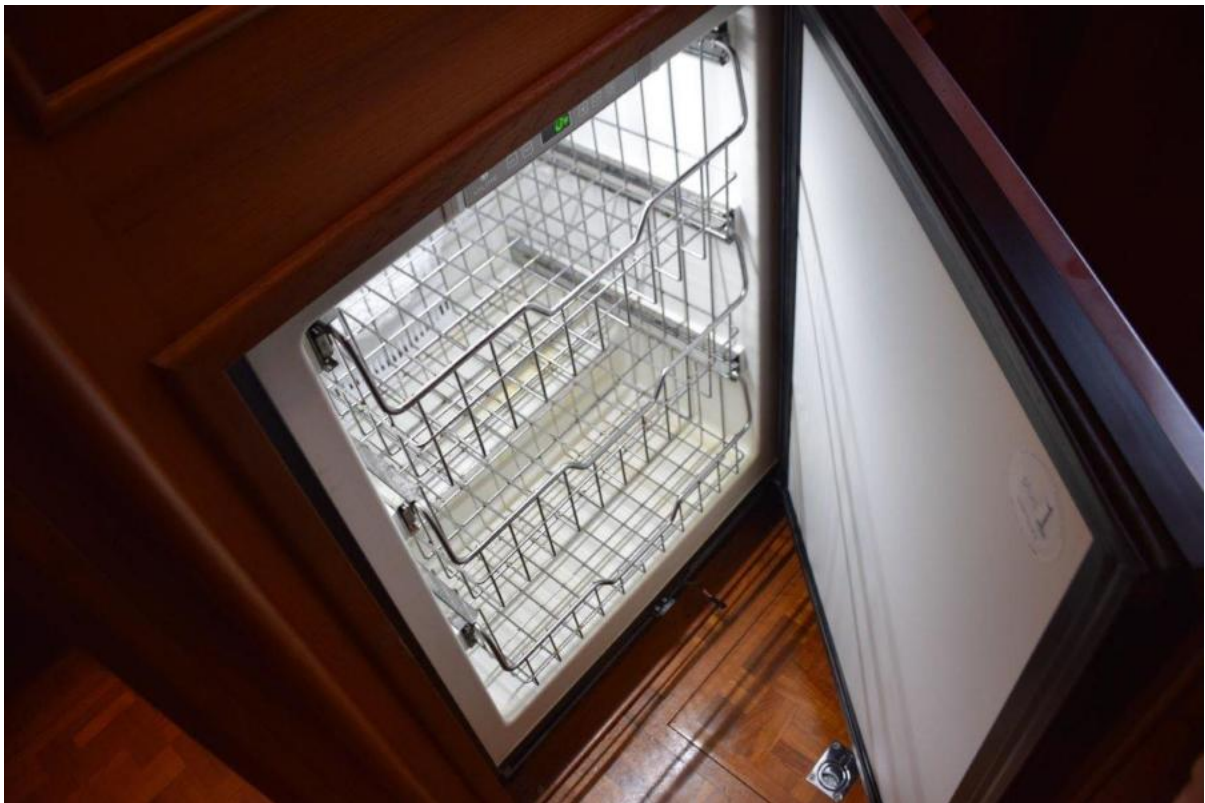
Hull 163 Emblem



Main Electrical Breaker Switching Panel



Portside Pantry Area



Freezer in Pantry



Pantry Cabinets and Shelves



Forward Pantry Cabinet and Shelves



Manual Reference Storage



LG Combo Washer Dryer In Laundry Area Starboard



Laundry Area Counter



Forward Guest Stateroom Berth



Forward Stateroom Starboard Side Teak Cladding



Forward Stateroom TV and Hanging Locker



DVD Player, Closet, and AC Thermostat



Guest Head Forward to Starboard



Guest Shower Stall



Looking Aft from Guest Stateroom



Storage Area Accessed with Steps Raised



Flybridge Helm Accessories



Flo Scans and VHF Radios on Flybridge



Flybridge Helm



Flybridge Electronics



Underside of Flybridge Arch with LED Lighting



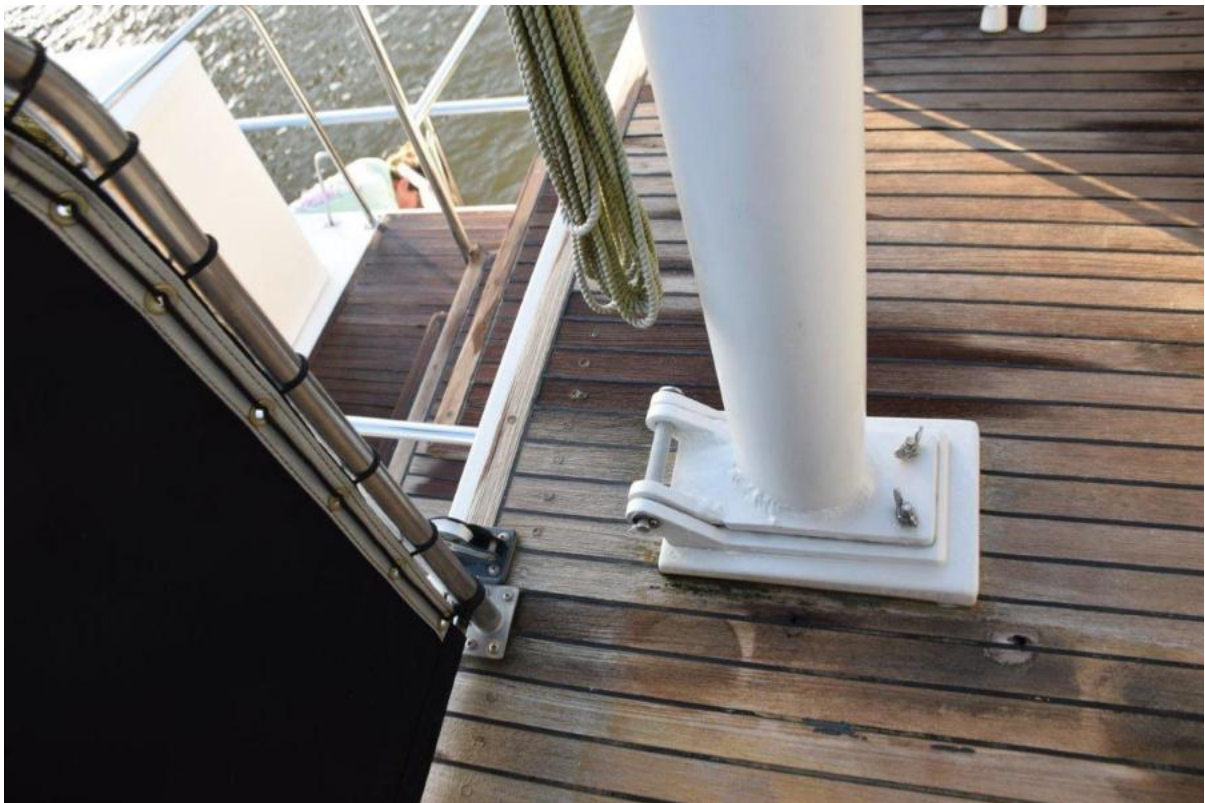
TracVision SAT TV Antenna



Flybridge Enclosure, Spotlight, and Windscreen



Antenna Mast, Spreader Lights, and Camera



Hinged Mast



Foredeck Cushions



Nameboards



Bow



Upgraded Stainless Safety Rails



Pulpit with Two Mounted Anchors and Windlass



Tender and Storage Box on Trunk Cabin



Honda 4 Stroke Outboard



Aft Control for Glendinning Cablemaster, TV Phone Inlet Plugs, Freshwater Shower



Overhead Dropdown Hatch to Engine Room



Under Stairway Entrance to Engine Room



Twin 3208TA CAT Diesels



375HP CAT's



View to Front of Engine Room



Newer Exhaust Blankets



Forward Starboard Engine Room



GB Wiring Cabinet



Inverter Portside



Northern Light Generator in Sound Shield



Bottom



Bow Thruster



Underwater Light



Dockside



A Beautiful Day!