



# FOURTH AND FINAL

44' (13.41m) 2017 Tiara Yachts 44 Coupe  
Ft. Lauderdale Florida United States



## OVERVIEW

|               |                  |                |                   |
|---------------|------------------|----------------|-------------------|
| Manufacturer: | Tiara Yachts     |                |                   |
| Engines:      | 2 Volvo          | Hull Material: | Fiberglass        |
| Engine Model: | IPS 600          | Cruise Speed:  | 26 Knots          |
| Engine HP:    | 435              | Max Speed:     | 31 Knots          |
| Beam:         | 14' 11"          | Cabins/Heads:  | 2 / 2             |
| Max Draft:    | 3' 9"            | Fuel Type:     | Diesel            |
| Water:        | 118 G (446.68 L) | Fuel:          | 350 G (1324.89 L) |

**\$675,000**



## Data Sheet

Category: Express Cruiser  
Condition: Used  
Model Year: 2017  
Documented Year: 2016  
Beam: 14'11" (4.55m)  
Max Draft: 3' 9" (1.14m)  
LOA: 44' (13.41m)  
Cabins: 2  
Twin Berths: 2  
Queen Berths: 1  
Heads: 2

Maximum Speed: 31 Knots  
Cruise Speed: 26 Knots  
Fuel Type: Diesel  
Deadrise: 18 °  
Hull Material: Fiberglass  
Hull Shape: Modified Vee  
Air Conditioning: Yes  
Bridge Clearance: 13' 5

Dry Weight: 28700 lbs  
Fuel Tank: 350 gal (1324.89 liters)  
Fresh Water: 118 gal (446.68 liters)  
Holding Tank: 35 gal (132.49 liters)  
Builder: Tiara  
Designer: Tiara  
HIN/IMO: SSUXB069F617

## Engines/Generators

### Engine 1

Volvo  
IPS 600  
Inboard  
435HP  
324.38KW  
Fuel: Diesel  
Hours: 337  
Hours Date: 02-15-2024  
Year: 2017  
Location: Port

### Engine 2

Volvo  
IPS 600  
Inboard  
435HP  
324.38KW  
Fuel: Diesel  
Hours: 338  
Hours Date: 02-15-2024  
Year: 2017  
Location: Starboard

### Generator 1

Onan  
9KW  
Hours: 415

## Summary/Description

This highly optioned cruiser offers an unbeatable package for those looking to get out on the water and start making memories with friends and family. Tiara Yachts have earned their dedicated following by producing high quality US built vessels for knowledgeable boaters.

Stepping aboard "FOURTH AND FINAL" it becomes immediately apparent the vessel is owned by an experienced Yachtsman. Her unmistakable Tiara lines are bolstered by an elegant blue hull paint, while the interior spaces boast rich teak woodwork.

Low engine hours on Volvo IPS 600's along with the Volvo joystick integration present a seamless navigating experience. The optional Nautical Structures hydraulic swim platform with teak inlay adds a versatile tender launching/storage system for the included 2017 Sirocco 10'6" RIB.

## Walkthrough

Boarding "FOURTH AND FINAL" is via hydraulic swim platform with dual entry doors on port and starboard molded fiberglass steps into the cockpit. Dual glass sliding doors open to the salon. The yacht's galley is immediately to starboard, while an L shaped ultra leather settee is to port. Moving forward the helm is located to starboard, while the centerline companionway leads down 4 steps to the yacht's accommodations. To starboard is the day head/guest head. Moving forward is the master cabin with a centerline island pedestal berth. The ensuite master head is to port. Midship and just aft of the companion way is the guest stateroom featuring twin berths.

## Transom

- Dual transom entry doors with stainless steel frame
- Stainless steel grab rails
- Electrically operated transom storage trunk with fiberglass door
- (2) Stainless steel pop up cleats
- Recessed transom shower with hot and cold water
- 120V GFI Outlet
- Kenyan Electric Grill
- Optional Nautical Structures Hydraulic swim platform with teak inlay (67K factory option) - New hoses and zincs 11/23 (\$2,500)
- Tender chocks
- Sockets with poles for sun shade
- Low level LED courtesy lights
- DC lights for aft storage area
- 2017 10' Sirocco Tender with Yamaha 15 HP motor

## Cockpit

- 3 person molded forward facing lounge with removable cushions and cover
- Varnished teak table with manual hi/lo and cover
- Low level LED courtesy lights
- Port and Starboard aft facing seats with storage below and covers
- (4) Stainless steel drink holders
- (2) JL Audio Speakers

- (2) JL Audio Subwoofers
- JL Audio M Series Digital amp
- Fusion remote control
- Makefast Marine powered sunshade
- Cockpit carpet over fiberglass nonskid decking
- Garmin rear facing HD camera
- Overhead grab rails
- Port side hinged locker with Glendinning cable master and TV/Telephone inlet.
- Starboard hinged locker with Fresh/Salt water wash down, dockside water inlet with pressure regulator, and Spot Free washdown system

## Foredeck

- Stainless steel bow rail
- Stainless steel burgee staff
- LED Nav lights
- ACR remote controlled spotlight
- Large hinged Anchor locker with gas shock and fresh water washdown
- Lewmar CPX3 rope/chain anchor windlass system
- 50' Chain
- 200' Rope rode
- 35 LBS Lewmar stainless steel plow anchor
- Dedicated stainless steel anchor cleat
- Safety Cable
- Wired windlass remote control
- Windshield cover
- Recessed Chaise lounge sun pads with cup holders, hand holds and cover
- Bomar hatch with Ocean Air screens and privacy covers
- Windshield wiper system with (2) wipers and washers
- (2) Spring cleats
- Fiberglass nonskid decking
- LED down lighting in bow rail

## Hardtop

- 4' Open Array Garmin Radar
- (2) 8' VHF antennas
- Mounted Star Link antenna
- Garmin Sirius XM Weather antenna
- Kahlenberg trumpet horns
- Powered sunroof

## Salon

- Counter balanced entry doors with pleated shades
- Pleated shades on port and starboard side lights
- Port side electrical panel
- Port side hidden air conditioning controls
- Port side lift up storage under raised settee pedestal
- Hinged storage under L shaped settee
- Varnished teak table

- Settee on raised pedestal
- Slide out cabinet with 28" Samsung TV with Blu-ray player
- (8) Overhead LED lights
- Magnetic phone holder
- CO2 detector
- Skylight with cover opens to guest stateroom
- Teak sole

## Galley

- Hinged glass front dish storage locker
- Corian counter top
- Kenyan (2) burner cook top
- Breville microwave oven
- (2) Storage drawers
- Corian cook top and sink covers with dedicated storage cabinet
- Isotherm fridge drawer
- Isotherm freezer drawer with ice maker
- Trash can stowage
- (8) Overhead LED lights
- Exhaust fan
- Teak sole

## Helm

- (2) Garmin 8612 12" MFD's- (2023)
- Volvo electronic engine controls
- Volvo Glass Cockpit
- Volvo joystick control
- Volvo push to start
- Garmin GRID remote control
- (2) Person ultra leather helm seat with electronic control
- (2) Position foot rest
- Garmin GHS-10 VHF
- Tilt leather wrapped steering wheel with Edson speed knob
- (2) USB charge ports
- 12V accessory outlet
- Fire system override controls
- Garmin Card readers
- Lenco automatic trim tab control
- Bilge pump indicators
- Wiper control
- Horn control
- Nav light control
- Windlass control
- Electric sun roof control
- (2) Overhead lights
- Accent lights
- Opening port and starboard windows
- Richie 3" Magnetic Compass
- Manual fire system pull

- (2) Magnetic phone holders

## Accommodation Area

Down (3) teak steps to a foyer area with Chilewich wall covering with the guest/day head to starboard, queen size berth forward, a second head with stall shower to port, and twin cabin aft.

## Master Head

- Teak vanity with storage cabinet below
- Kohler above counter sink
- Mirrored medicine cabinet doors
- VacuFlush toilet
- Fiberglass stall shower with glass door and teak seat
- Hand held or wall mountable shower fixture
- Opening stainless steel portlight with shade
- Exhaust fan
- (2) Large mirrored panels
- Teak sole

## Master Stateroom

- Queen Pedestal berth with large gas assisted storage area below
- Large storage drawer under queen berth
- Built in shelves for nightstands with hinged storage cubbies
- (2) Reading lights
- (2) Glass storage cabinets
- Fusion stereo remote
- 24" Samsung LED TV
- Digital AC controls
- Port and Starboard opening stainless steel port holes with silhouette shades
- Bomar deck hatch with sliding screen and shade
- Bi-fold privacy door
- (8) Overhead DC lights
- Cedar lined hanging locker
- (2) JL Audio speakers
- CO2 detector
- Teak sole

## Guest Stateroom

- Twin single berths
- Storage under forward berth
- (2) Gooseneck reading lights
- Large hullside windows with opening porthole behind duet shades
- 18" Samsung LED TV
- (7) Overhead lights
- (2) Storage cabinets forward
- (2) Storage cabinets aft
- Combo washer dryer has been removed to create large cedar hanging locker
- Skylight with privacy cover

- CO2 detector
- Carpeted sole

## **Guest Head**

- Teak Vanity with storage below
- Above counter Kohler sink
- Fiberglass stall shower with glass door, fold down teak seat, and (2) overhead lights
- Hand held or wall mounted shower fixture
- (2) Mirrored medicine cabinet doors
- Opening stainless steel porthole
- VacuFlush toilet
- Teak door
- (3) Overhead lights
- Teak sole

## **Electrical**

- 12v DC system
- 120v/240v AC electrical system
- (3) Battery switches
- (8) Group 31 batteries
- 12v 100 Amp Victron battery charger
- 12 KVA ISO-Boost Transformer
- (17) Breaker protected AC circuits
- (35) Breaker protected DC circuits
- DC Voltmeter/Amp meter with (4) position selector switch
- (3) Remote mounted battery switches
- (3) Bilge pump switches
- Generator start/stop for 9KW Onan generator with 415 hours
- High water bilge alarm
- Dometic Tank monitor for fresh water and waste levels
- Galvanic Isolator and ELCI ground fault protection
- Electrical bonding system
- 1kW transducer for depth
- 50 amp 65', 220v shower power cable on Glendinning cable master

## **Mechanical**

- Volvo IPS 600's with 338 Hours
- Racor fuel filters
- 40 lb. Halon fire system
- Electro strainer for air conditioning and raw water system, keeps strainer growth free with electric current
- Compressor system for horn and sunroof
- Manifold system for water piping
- 11 Gallon Whale water heater
- Racor generator fuel filter
- (2) Raw water pumps for A/C
- Spot Zero ZTC II double pass series water purification system for water spot free washdowns \$14K
- (6) Step ladder into engine room
- Automatic LED lighting for engine room

- Three port oil change system
- Dometic 24,000 BTU air conditioning system for Salon / Galley
- Dometic 6,000 BTU air conditioning system for Master stateroom
- Dometic 6,000 BTU air conditioning system for guest stateroom

## Recent Engine/Drive Service November 2023 by JAS MARINE

1. Change oil and filters for main engines
2. Change fuel filters for main engines
3. Change Racor filters for main engines
4. Replace impellers for main engines
5. Replace breather filters on main engines
6. Replace zincs on main engines
7. Service starboard IPS drive with new oil, filter, shaft seals, new O rings and clean gear cooler
8. Service port IPS drive at shop with (2) new shafts, inner prop shaft, new seals, new lip seals, new free wheeling oil pump, new bearings, filter and clean gear cooler.

Total IPS drive service \$13,000

Total engine service \$3,000

Engine hours at service 316 / 315

## Remarks

This highly optioned cruiser offers an unbeatable package for those looking to get out on the water and start making memories with friends and family. Tiara Yachts have earned their dedicated following by producing high quality US built vessels for knowledgeable boaters.

Standout features include:

- Light blue hull paint from Tiara
- Nautical Structures hydraulic swim platform with teak inlay for included 10' RIB
- (2) Garmin 8612 MFD's installed 2023
- Starlink Wi-Fi system installed 2023
- Spot Zero ZTC II 1000 fresh water purifying reverse osmosis system installed 2023

## Disclaimer

The company offers the details of this vessel in good faith but cannot guarantee or warrant the accuracy of this information nor warrant the condition of the vessel. A buyer should instruct his agents, or his surveyors, to investigate such details as the buyer desires validated. This vessel is offered subject to prior sale, price change or withdrawal without notice.





Profile



Salon Looking Forward



Salon to Port



Hinged Storage in Salon Seating





Salon Settee Forward



Aft End of Salon



Upper Control Panel



Lower Electrical Panel





Salon Looking Aft with Shades



Salon Looking Aft



Galley to Starboard



Galley





Cooktop



Microwave and Cover Storage





Refrigerator/Freezer Drawers



Galley Covered

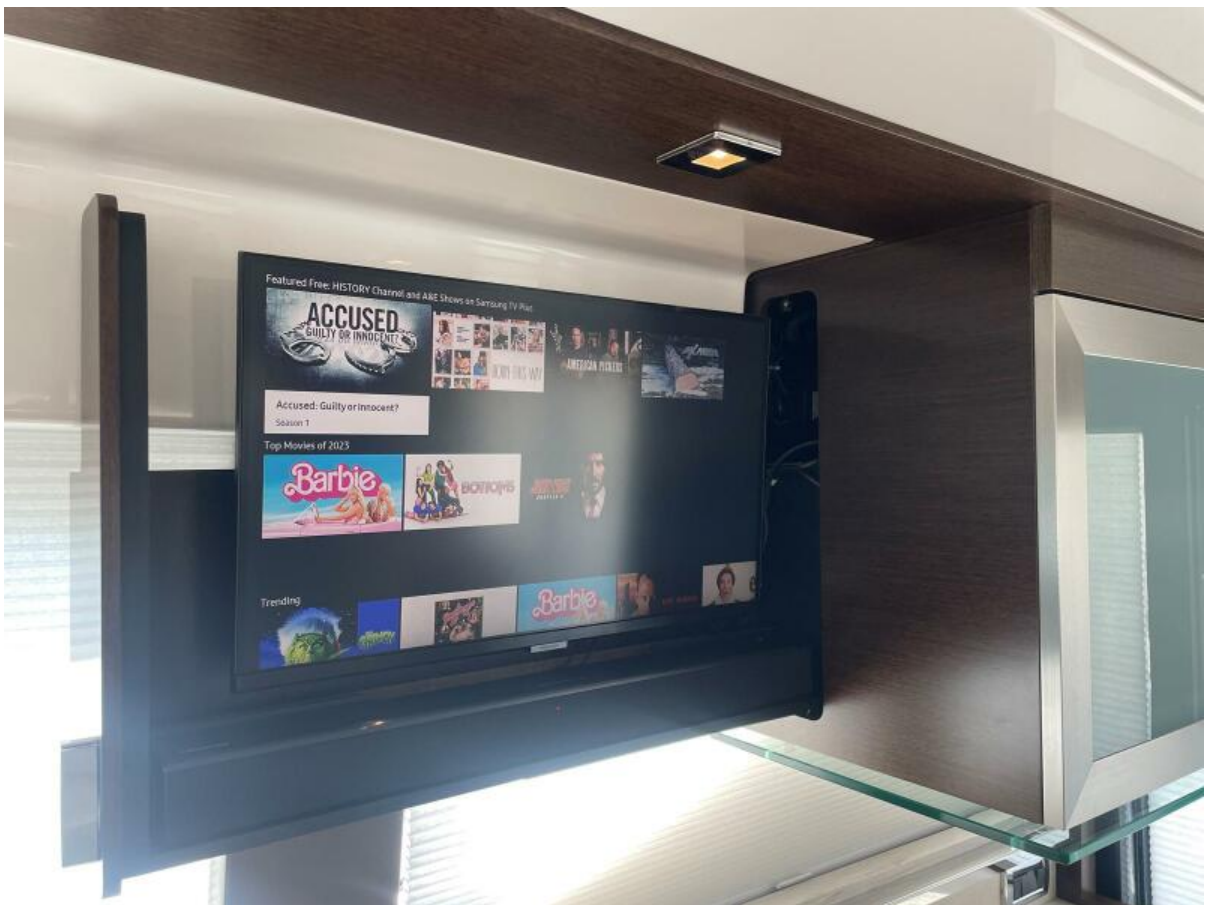


Overhead Dish Cabinet





Sink



Sliding Salon TV



Helm



Electric Helm Seat

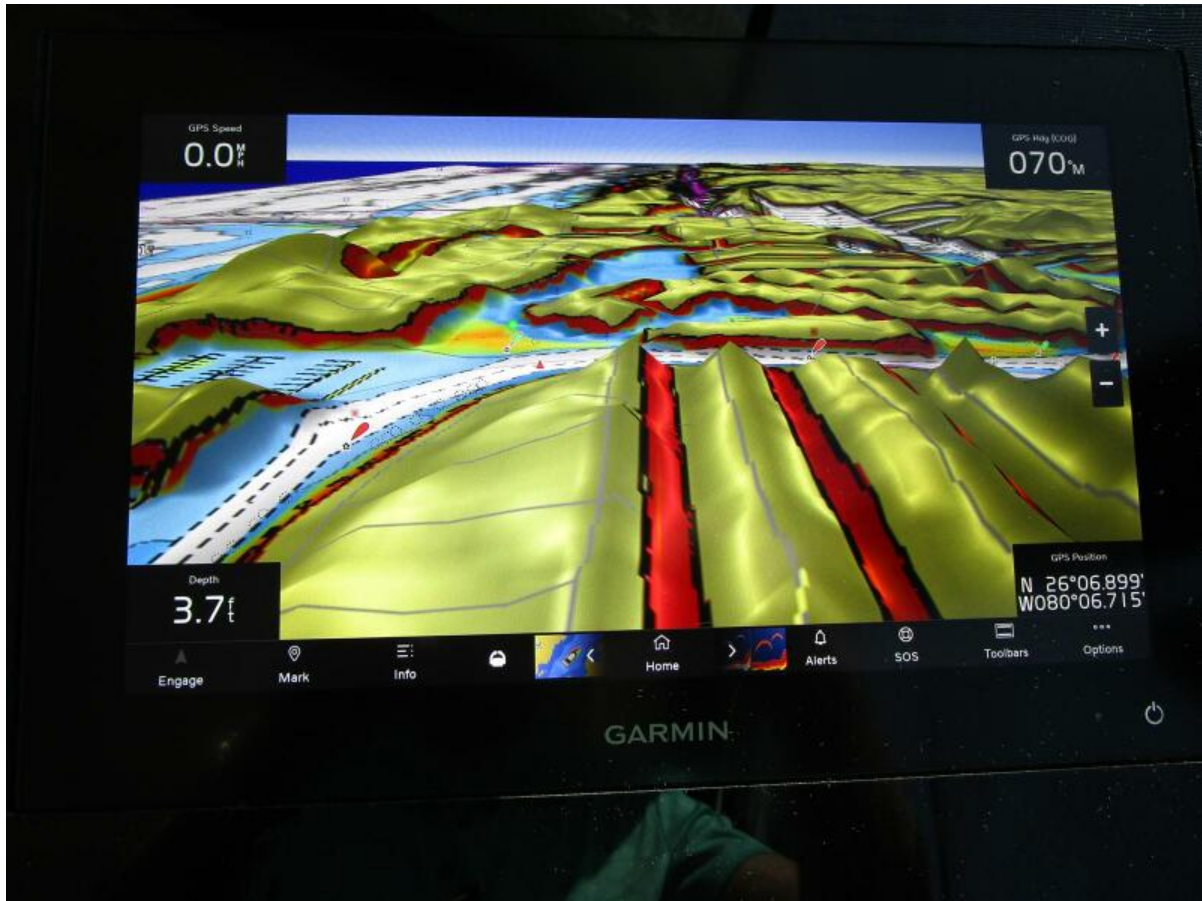




Helm Detail



Port Garmin



Stbd. Garmin



Joystick and Garmin Controls





Master Looking Forward



Master to Port



Master to Stbd.



Head System Under Master Sole





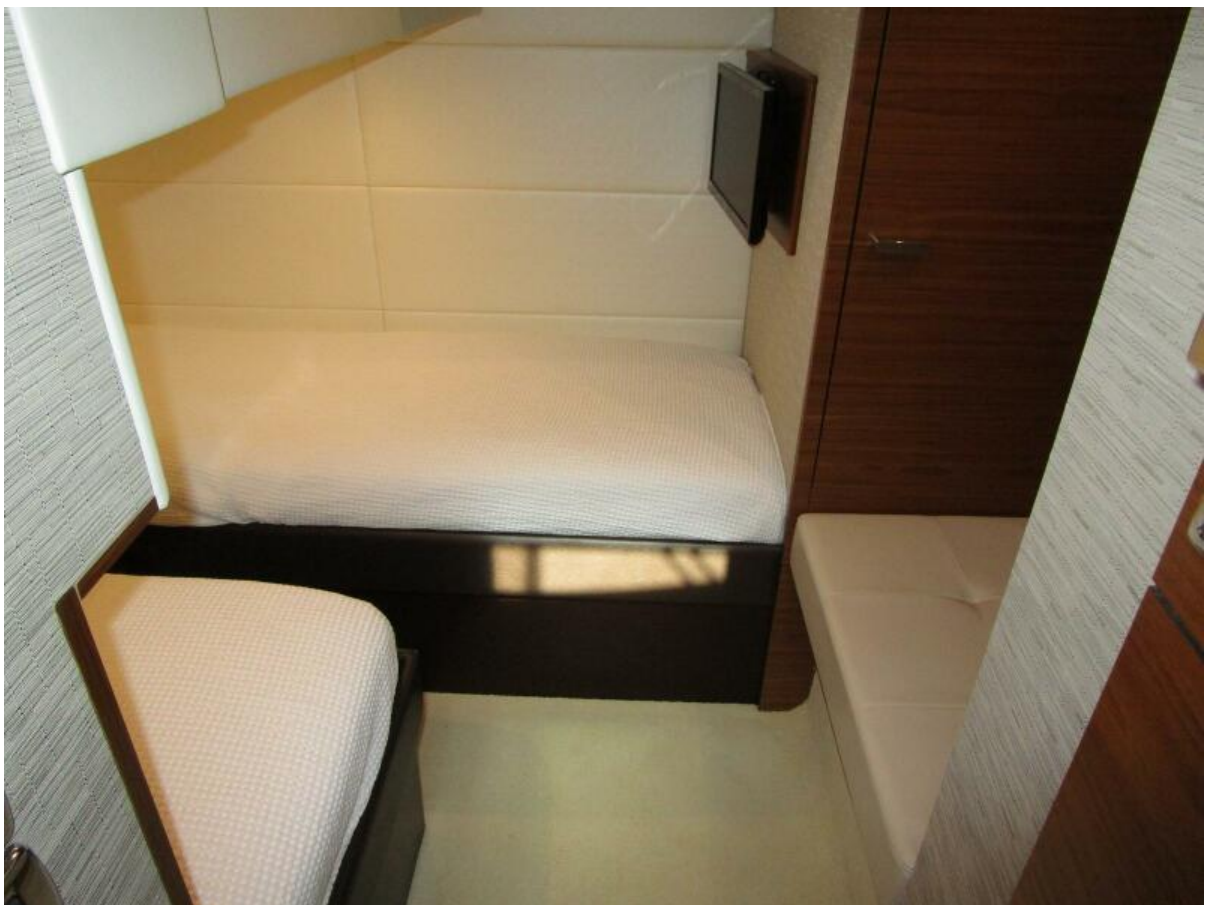
Stbd. Head



Port Head



Port Shower



Guest Cabin Looking Aft





Guest Cabin Looking Stbd.



Guest Cabin Looking Port



Bow Area



Bow Sun Lounge





Windlass Detail



Hard Top Equipment



Aft Seating and Tender



Aft Seating





Aft Deck Forward



Port Engine



Stbd. Engine



Stbd. Side Engine Room Forward





Forward Engine Room



Port Side of Engine Room



ISO Transformers



Spot Zero System





Generator



Electro Strainer for Air Conditioning



Electro Strainer for Air Conditioning





Alternate Profile



Alternate Profile





Alternate Profile



Alternate Profile



Alt Profile



Stern Quarter





Stern Quarter



Bow