



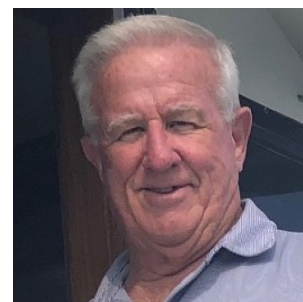
28' (8.53m) 2017 Cutwater C-28  
Saunderstown Rhode Island United States



## OVERVIEW

Manufacturer:	<i>Cutwater</i>		
Engines:	1 Volvo Penta	Hull Material:	Fiberglass
Engine Model:	D4	Cruise Speed:	Knots
Engine HP:	260	Max Speed:	Knots
Beam:	8' 6"	Cabins/Heads:	/ 1
Max Draft:	2' 4"	Fuel Type:	Diesel
Water:	40 G (151.42 L)	Fuel:	100 G (378.54 L)

**\$187,500**



Tom Thomas tomthomas@unityyacht.com

1-401-862-8620

## Data Sheet

Category: Downeast  
Subcategory: Cruisers  
Condition: Used  
Model Year: 2017  
Beam: 8'6" (2.59m)  
Max Draft: 2' 4" (0.71m)  
LOA: 28' 4" (8.64m)  
Heads: 1

Knots  
Knots  
Fuel Type: Diesel  
Hull Material: Fiberglass  
Hull Shape: Deep Vee  
Air Conditioning: Yes  
Bridge Clearance: 9' 1"

Displacement: 8000 lbs  
Dry Weight: 8000 lbs  
Bow Thruster: Yes  
Stern Thruster: Yes  
Fuel Tank: 100 gal (378.54 liters)  
Fresh Water: 40 gal (151.42 liters)  
Holding Tank: 30 gal (113.56 liters)  
Imported: No  
Builder: Cutwater

## Engines/Generators

### Engine 1

Volvo Penta  
D4  
Inboard  
260HP  
193.88KW  
Fuel: Diesel  
Hours: 385  
Serial #: VV070622  
Location: Middle

## Summary/Description

2017 Cutwater C-28

### 2017 Cutwater C-28

- Single 260 hp Volvo diesel inboard with 385 hours
- 4-Blade bronze prop
- 12,000 BTU Cruiseaire reverse cycle AC
- Next Gen generator with 40 hours
- 110 Shore power connection
- Pressure water shore connection
- AC/DC Novakool refrigerator
- Whale 2-Burner electric cooktop
- 6-Bottle Dometic wine cooler
- Mauve convection grill
- Marine Craft cabin electric heater
- Enclosed head
- Raritan electric head
- Electric windlass
- Rocna anchor - 22 lb.
- Stainless steel bow rail
- Bow and stern Side Power thrusters
- Ritchie compass
- Garmin GPS Map 7212XSV including radar
- Garmin VHF
- Magestic 19" flat screen TV
- Fusion stereo
- Fiberglass swim platform
- Stainless steel swim ladder
- 2022 Venture triple axle trailer

## Manufacturer Provided Description

The C28 forward stateroom, with its convertible V-berth, television and private head with shower, offers exceptional privacy and comfort. The C28 adds the convenience of a mini-galley in this space (NW Edition) or bench seat with storage beneath (Luxury Edition) to create a welcoming after-hours retreat...or a separate hideaway for the kids.

The C28 includes a self-bailing innerliner cockpit that's ideal for fishing or relaxing at anchor. A solid gate offers access to a custom transom platform with integral boarding ladder for watersports or easy access to tender or dock. The C28 cockpit seating plan incorporates a reversible seat integrated into the transom as well as flip-out seating from the Starboard and Port sides. With nearly 16 square feet of additional deck area, the cockpit on the Cutwater 28 also includes built-in cabinets for refreshments and extra storage volume.

Single-engine diesel power and the exclusive Cutwater Hull design combine to deliver admirable cruise speeds, and exceptional fuel economy to maximize range. Standard bow and stern thruster make docking a breeze. And being trailerable the C28 offers quick, convenient access to distant cruising waterways.

## Mechanical Disclaimer

Engine and generator hours are as of the date of the original listing and are a representation of what the listing broker is told by the owner and/or actual reading of the engine hour meters. The broker cannot guarantee the true hours. It is the responsibility of the purchaser and/or his agent to verify engine hours, warranties implied or otherwise and major overhauls as well as all other representations noted on the listing brochure.

## Disclaimer

The company offers the details of this vessel in good faith but cannot guarantee or warrant the accuracy of this information nor warrant the condition of the vessel. A buyer should instruct his agents, or his surveyors, to investigate such details as the buyer desires validated. This vessel is offered subject to prior sale, price change or withdrawal without notice.





Profile



Profile







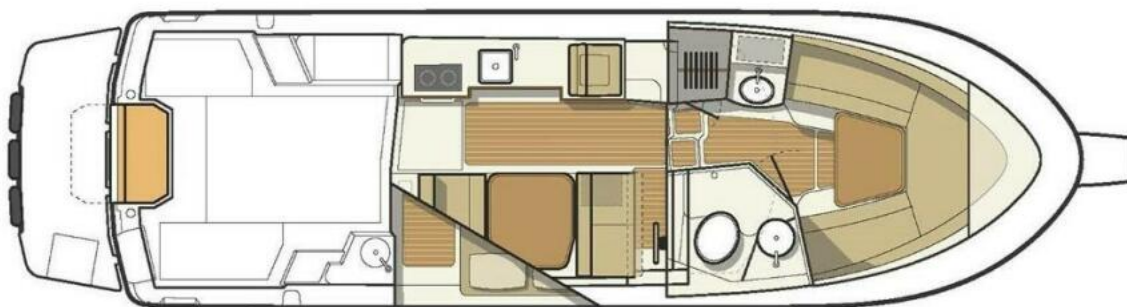












Manufacturer Provided Layout