



44' (13.41m) 2022 Sunpower Yachts 44  
Broadbeach Queensland Australia



## OVERVIEW

Manufacturer:	Sunpower Yachts	Hull Material:	Composite
Engines:	2	Cruise Speed:	6 Knots
Engine Model:		Max Speed:	9 Knots
Engine HP:	26.82	Cabins/Heads:	3 / 2
Beam:	23' 6"	Fuel Type:	Electric
Max Draft:	2' 5"	Fuel:	
Water:	110 G (416.4 L)		

**\$1,782,000**



## Data Sheet

Category: Catamaran  
Subcategory: Flybridge  
Condition: New  
Model Year: 2022  
Beam: 23'6" (7.16m)  
Max Draft: 2' 5" (0.74m)  
LOA: 44' (13.41m)  
Cabins: 3  
Heads: 2

Maximum Speed: 9 Knots  
Cruise Speed: 6 Knots  
Fuel Type: Electric  
Hull Material: Composite  
Hull Shape: Catamaran

Fresh Water: 110 gal (416.4 liters)  
Holding Tank: 55 gal (208.2 liters)  
Imported: No  
Builder: Sunpower

## Engines/Generators

### Engine 1

Electric  
26.82HP  
20KW  
Fuel: Electric  
Hours: 27  
Location: Port

### Engine 2

Electric  
26.82HP  
20KW  
Fuel: Electric  
Hours: 27  
Location: Starboard

## Summary/Description

2022 Sunpower 44

***Seller says SELL!!!!***

***Cuts asking price by \$539,000!!!***

***Making way for next model...***

***Only....US \$1,782,000!!***

***Now is your chance for an incredible bargain on this fresh from the factory Solar powered Catamaran!***

***Don't hesitate, step up now!!!! A trip to Australia is in your future!***

Sunpower Yachts proudly introduces their Sun Power 44 VIP Solar Powered Catamaran to the world stage. Designed and built to CE standards, she has been launched, tested and run through her paces. She is a fully found Yacht ready for her First Owner, with all systems up to par.

Her configuration lends itself to the cruising couple and friends, as well as the weekend warrior, out to entertain or just hanging around the dock or at anchor. The Sunpower 44 provides all the necessary ingredients for a proper day on the water.

The best part of all this is the absolute lack of noise or exhaust fumes. The silence is deafening.

It is almost eerie to be moving through the water with no engine noises or sails flapping in the breeze. You can truly enjoy your surroundings with no man made interference! Make sure you've stocked the pantry well....more food would be the only reason to come back to shore.

## Vessel Walkthrough

From a dinghy or floating dock, you can board her on one of the 2 swim platforms that catamarans provide. In between the hulls, there is an overhead space ideally suited for dinghy storage, with protection for it by the deck above. The steps take you up to the aft deck which has a long settee and tables for entertainment or early morning breakfasts. Another set of molded in steps will take you to the flybridge. Arriving there you will have a bird's eye view of your surroundings. There is a fully equipped helm as well as seating and tables for guests. An excellent area for socializing. Back down to the aft deck, you may enter the galley and main salon area through wide glass doors that, when opened enhance the outdoor "feel" of the interior.

Entering you have the galley to port and starboard, fully equipped for cooking and entertaining. Forward of the Galley area the lower helm is to port and a dinette area to starboard.

In this entire space we have a 360-degree panoramic view of our surroundings. In fact, you can stand on the bow and watch people sitting on the aft deck having lunch. Best hurry... don't want to miss a meal!

Finally, below decks in the port hull, there are 2 guest cabins and a shared head and shower area. The starboard hull and forward sections contain the Master stateroom with its own ensuite head and shower. All these cabins and especially the master cabin have a light and airy feel to them due to generous use of windows and ports.

Engine and machinery spaces have appropriate access hatches at their locations in each hull.

### **General Interior:**

- Headroom in all cabins, a minimum of 6'6"
- Large portlights in all cabins
- Natural aeration and forced aspiration system in all cabins/heads
- Thermal insulation for excellent room climate
- Handrails in inox, optionally leather covered
- Cabin and head doors in lightweight materials with high quality soft closure
- Door locks have high quality "anti-rattle" mechanism, all drawers soft closure
- Port lights and deck hatches in "flush deck" design and CE approved
- All steps with anti-skid surface and LED courtesy lights
- Hella LED lights throughout

### **Main Salon:**

- Spacious salon, approximately 20 sq. meters
- Sliding salon door opens to full-width
- Sliding window on the port side
- When fully opened, this interior is virtually a large open cockpit area.
- Hella LED lights
- Panoramic view from anywhere in the salon
- Also contains, galley, lower helm and dinette
- Dinette seats 6 for dinner.
- U shaped sofa, converts to bed
- Samsung 42" TV with hydraulic lift

### **Inside, Lower Helm**

- Helm, with steering engine controls and displays, compass
- Helm seat, 120 cm wide
- Raymarine Axion GPS/Plotter
- Raymarine radar
- Icom VHF marine radio
- Muir Anchor chain counter
- Fusion marine stereo surround sound system, for salon and aft deck
- Fusion marine stereo remote control
- Water tank gauge
- Yacht Battery power gauge
- Electric outlets
- 360-degree panoramic view from this position
- Vast storage under, with long drawers
- Yacht Electric e-motor battery power meter
- Luxo TV remote power lift
- Horn
- Light switches
- Craftsman bow thruster controls

### **Galley:**

- Galley is to port and starboard as you enter from aft deck.

- U shaped galley to port, L shaped to starboard with acrylic stone worktop.
- Stainless steel sink, twin basins
- Electric sockets on worktop
- Bosch Induction cooktop with 4 burners
- Bosch oven and grille
- Samsung Side by side Fridge/freezer, lower drawer
- Ample Cabinets and drawers for storage

### **Master Stateroom:**

Entering from steps leading down from center forward of the main salon, the master stateroom is light and airy due to the abundance of windows. It encompasses the full beam area and the starboard hull going aft. Featuring :

- Twin vanities
- 2 Large double beds
- Office desk
- Marine mattresses in PU foam with varied densities for greater comfort and restful sleep
- Also, anti-mite, anti-fungus, antibacterial and hypoallergenic
- Storage under the bed accessible from side or top
- Hanging lockers and lockers with shelves
- Electrical outlets
- Hella LED ceiling lights and reading lights by the bed
- The head/shower is all the aft

### **Master Head/Shower:**

- Generous sized bathroom
- Large, "King size" shower with acrylic door
- Storage shelf and seat in shower
- Dometic electric toilet
- Bosch washing machine
- Non skid flooring
- Hella, LED spotlights
- Twin basin sinks with H/C water mixer
- Upper cabinet with mirror
- Cabinet under the sink
- Electric outlets
- Towel holder-soap dispenser-paper holder

### **Guest Stateroom:**

There are 2 Guest staterooms in the port hull. They are accessed from steps coming down from the main salon, port side, middle of the salon. Staterooms are found fore and aft with the shared bathroom in the middle and a hallway connecting all.

- Forward stateroom has 2 single bunks
- Aft stateroom has a large double berth

### **Both Cabins Feature:**

- Hella LED lights, reading lights
- Same marine mattresses as master cabin

- Access to the shared head/shower
- Abundant natural lighting
- Electric outlets

### **Guest Head**

- Dometic electric toilet
- Hella LED lighting
- Electric outlets
- Sink with mixer tap for hot/cold water
- Cabinet under, cabinet over with mirror
- "King size shower with acrylic door
- Non-skid flooring
- Towel holder-soap dispenser-paper holder

### **DECK:**

#### **Transoms**

- Shower (H/C) in starboard transom
- Inox handrails
- 1 Swimming ladder at transom step
- I-bench at the salon-wall with a U cockpit seat and table for 6-8 persons
- All voids are accessible for ropes, fenders, cushions etc.
- Built in Stairs to flybridge
- Electric tender lift
- Tender 2.9m islander
- Torqueedo outboard 1103

#### **Foredeck:**

- 2 deck-hatches for access to forward storage-compartments
- Muir 1.200 W electric windlass (8 mm chain)
- Composite day bed areas for up to 4 guests, with 2 x round composite tables/ drink holders with stainless rims.
- Day bed cushions only

#### **Deck Fittings:**

- 8 mooring cleats total (2 x swim deck, 2 x stern, 2 x mid-ship, 1 x bow on each hull)

#### **Exterior Decoration:**

- Sunpower Yachts logo on sides of coach roof

#### **Flybridge**

- Port helm console for engine controls and navigation equipment
- Moulded L-shaped sofa with table
- Sunbeds
- Fixed solar roof
- E-motor controls
- Raymarine Axion 9
- Radar

- Muir anchor winch counter
- Craftsman bow thruster controller
- Dock lines, fenders, boat hook and cleaning gear

#### **Electrical:**

- Fuses and breakers for 12v, 24v and 48 v DC and 240v AC
- Wired for 240 v AC
- Custom electrical panel All wiring marine grade tin coated copper
- All cables labelled, numbered and mounted on rails
- All lights are Hella, LED

#### **Main panel Features:**

- Battery level
- Fuel, water and holding tank gauges.
- Navigation lights

#### **Batteries and Solar:**

- 48 volt Lithium batteries for 80 kWh
- 22.5 volt House batteries, with a 50 Amp charger
- 60A charger for 25.2 volt batteries
- 5 kVa Inverter for house AC appliances
- 24 high efficiency solar panels with 9.6 kWp in total for house and propulsion
- MPPT solar charge regulators
- Charge, consumption and capacity controls for all electric circuit

#### **Engine Details and Mechanical Equipment:**

- 2-20KW high efficiency motors
- Cruising speed 4-6 knots, max 10 knots
- High efficiency props on shafts
- 16 kw Yanmar generator,
- Access to engine and mechanical compartments via cockpit hatches
- Engine compartments: natural aeration and forced extraction
- Generator, engine and technical compartments sound proofed
- Seawater Pro watermaker, with 50hz motor, 20 gal per hour
- Hot water heater
- All hoses and piping marine grade
- Fresh water circuit with pressure pumps
- Hand shower on transom
- Holding tank has macerator pump

#### **Bilge pumps:**

- Automatic bilge pumps in each watertight compartment 2 in engine rooms and 2 forward in each hull

#### **Steering:**

- 2 rudder blades with stainless steel shafts
- Epoxy tube for rudder bearings
- Self aligning upper and lower bearings

- Hydraulic steering system

### Construction Details:

- Both hulls are light weight and flexible Western Red Cedar laminated with quadriaxial e-glass and west System Epoxy. Western Red Cedar is dimensionally stable, lightweight with high strength. It also has insulating properties to reduce hull noise, as well as being resistant to decay.
- Each hull has a laminated solid timber keel and a reinforced laminated collision bow section.
- Reinforced high-density foam core composite bonded with epoxy resin for a strong but lightweight structure.
- Epoxy resins used for their interlaminar shear strength and resistant to osmosis.
- Sophisticated highly torsion resistant hull and bulkhead structure
- Watertight bulkheads, sealed floor sections and collision compartments for ultimate safety.
- Foam core structure bonded with e-glass provides thermal and sound insulation.
- Built in interior furniture reinforces the light weight structure.
- Exterior completely finished in Jotum, high gloss polyurethane paint.
- Standard build is in accordance with CE regulations.

### Safety:

- 6 Lifejackets
- Flare kit
- Whistle/bell/horn
- Fire extinguishers
- First aid kit
- Watertight bilges in both hulls
- Hermetically closed compartment at both bow bottoms
- Oversized automatic bilge pumps
- Additional manual bilge pumps

## Brokers Comments

SUNPOWER has provided a well built, leading edge solar powered Catamaran. It is up to the First Owner to roam the planet with her and create their own adventure story. That story will be devoid of engine or fuel problems, very little time spent on maintenance in the engine room. No

polluting of the planet or its oceans with combustion engines. As you write your story, you can focus on quiet passages, calm anchorages that don't resonate with generator noise and a clear conscience that you are not singlehandedly destroying the planet for personal enjoyment.

Here's a yacht with all the right stuff for travelling. Unlimited power source, a watermaker, Navigation aids, backup generator and easy to launch and retrieve dinghy, dual swim platforms and lots of room

## Mechanical Disclaimer

Engine and generator hours are as of the date of the original listing and are a representation of what the listing broker is told by the owner and/or actual reading of the engine hour meters. The broker cannot guarantee the true hours. It is the responsibility of the purchaser and/or his agent to verify engine hours, warranties implied or otherwise and major overhauls as well as all other representations noted on the listing brochure.

## Disclaimer



The company offers the details of this vessel in good faith but cannot guarantee or warrant the accuracy of this information nor warrant the condition of the vessel. A buyer should instruct his agents, or his surveyors, to investigate such details as the buyer desires validated. This vessel is offered subject to prior sale, price change or withdrawal without notice.



























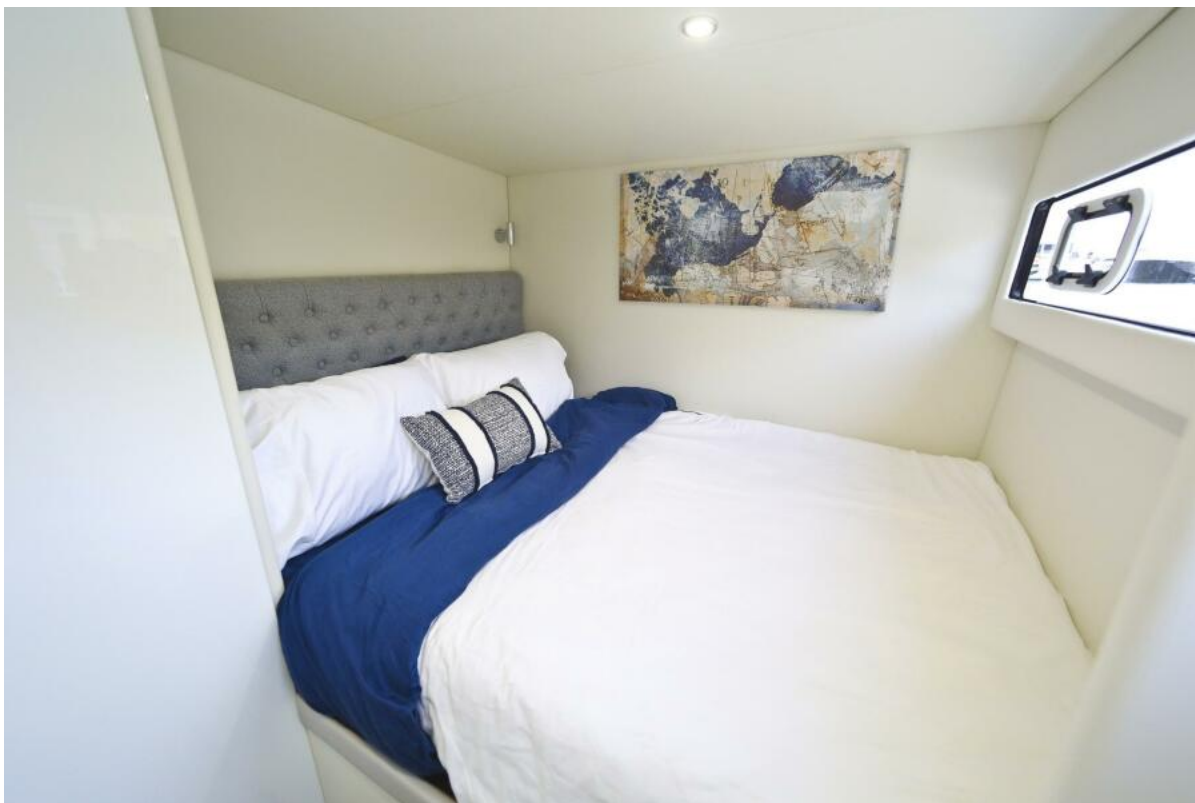


















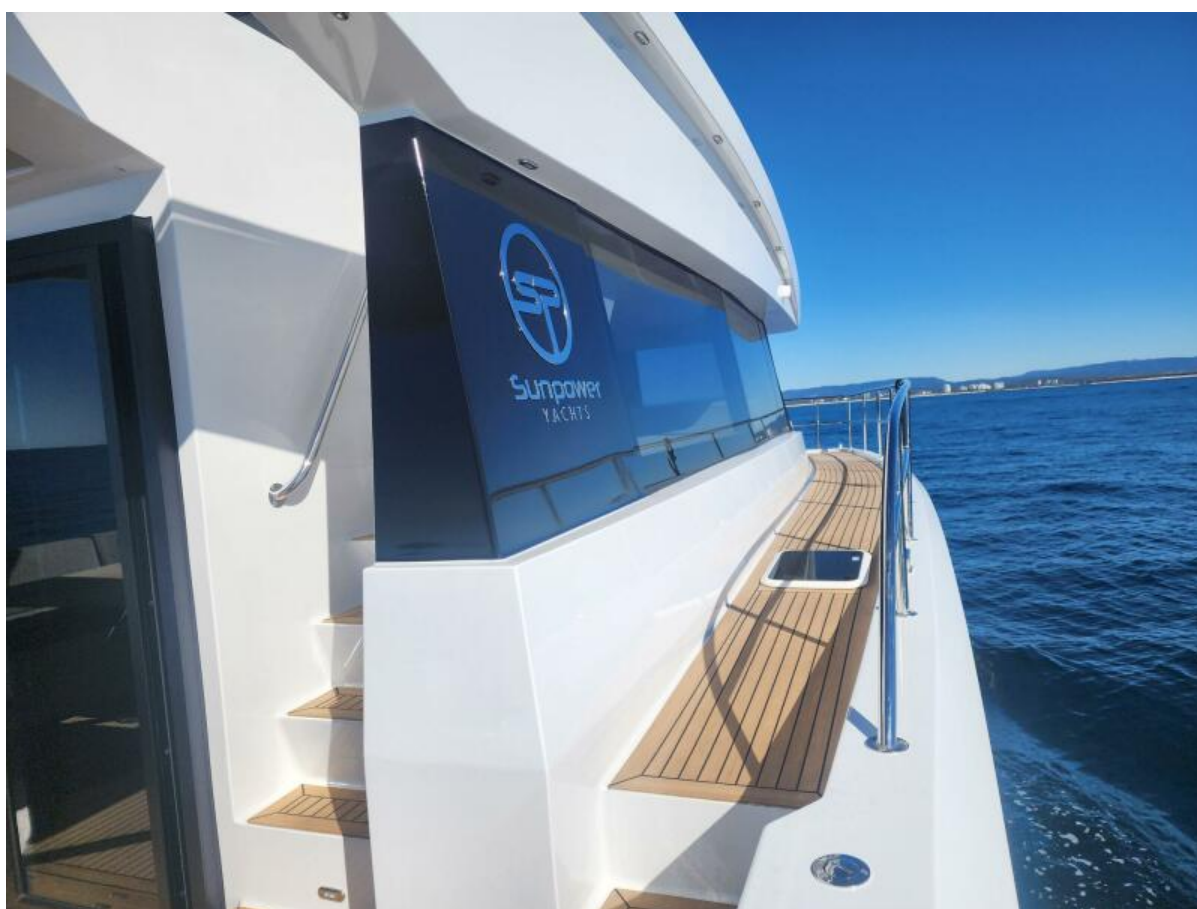






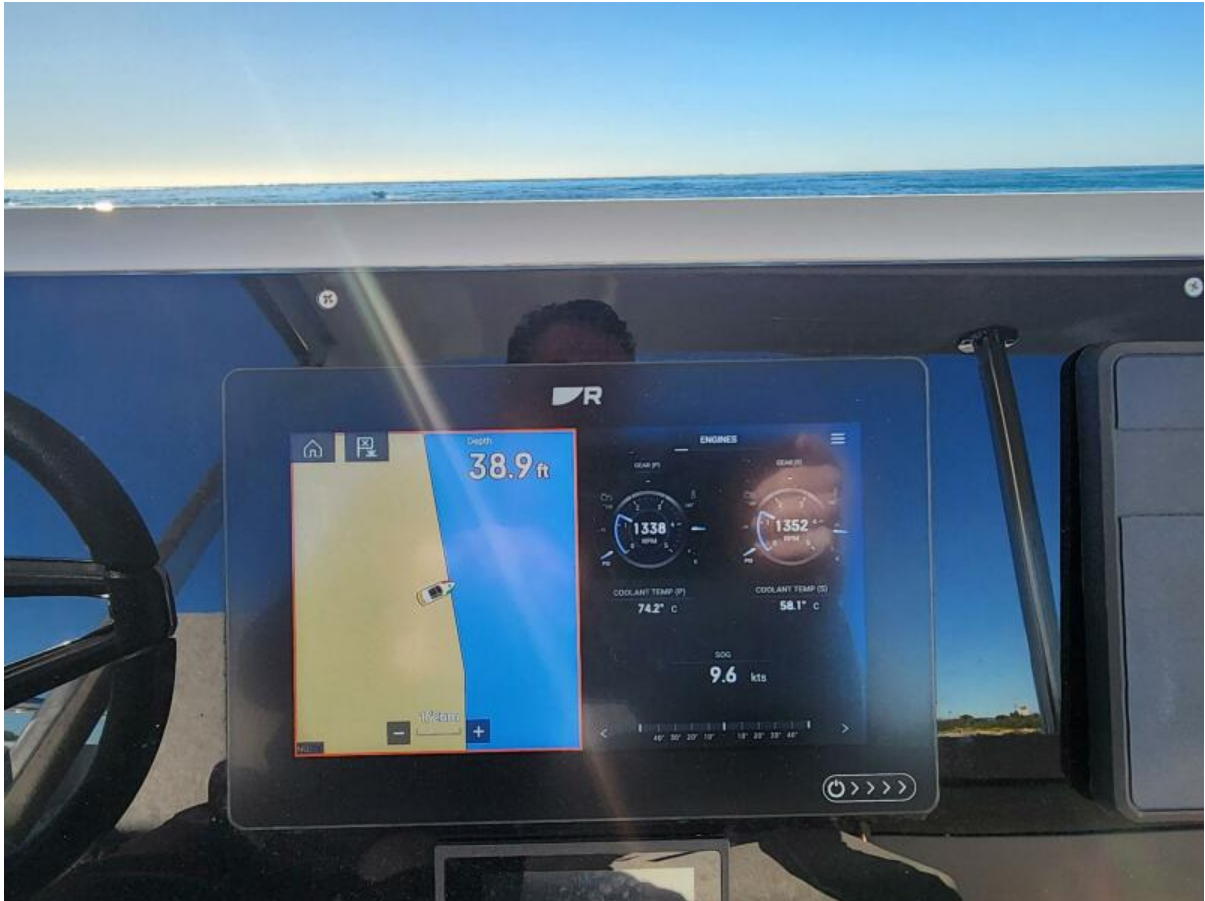






















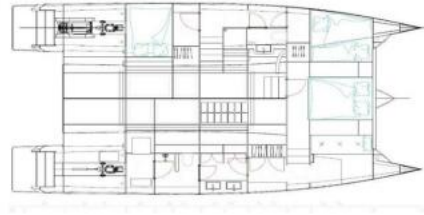
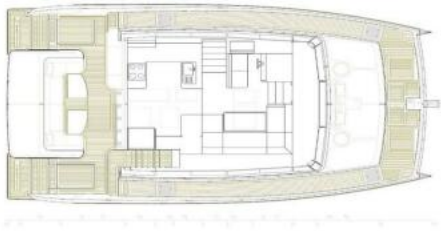
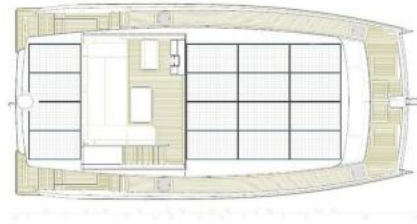




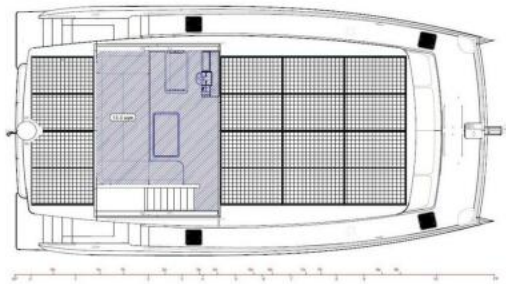


# MODELS - Floor Plans

## VIP OWNERS VERSION



## FLOOR AREA – SQM



FLYBRIDGE

SUNPOWER  
YACHTS



MAIN DECK

SUNPOWER  
YACHTS



LOWER CABINS

SUNPOWER  
YACHTS