



94' (28.00m) 2023 PerMare Amer 94 Twin
Sanremo Italy



OVERVIEW

Manufacturer:	PerMare	Hull Material:	Fiberglass
Engines:	2 Volvo Penta	Cruise Speed:	22 Knots
Engine Model:	IPS 1350	Max Speed:	26 Knots
Engine HP:	1000	Cabins/Heads:	5 / 6
Beam:	20' 8"	Fuel Type:	Diesel
Max Draft:	5' 6"	Fuel:	1320 G (L)
Water:	396 G (L)		

Call for Price



Data Sheet

Category: Motor Yachts

Condition: New

Model Year: 2023

Beam: 20'8" Max Draft: 5' 6" LOA: 94'
(28.00m)

Cabins: 5

Heads: 6

Maximum Speed: 26 Knots

Cruise Speed: 22 Knots

Fuel Type: Diesel

Hull Material: Fiberglass

Air Conditioning: Yes

lbs

Fuel Tank: 1320 gal Fresh Water: 396 gal

Builder: PerMare

Engines/Generators

Engine 1

Volvo Penta

IPS 1350

Inboard

1000HP

745.70KW

Fuel: Diesel

Location: Port

Engine 2

Volvo Penta

IPS 1350

Inboard

1000HP

745.70KW

Fuel: Diesel

Location: Starboard

Summary/Description

2023 PreMare Amer 94 Twin

2023 PreMare Amer 94 Twin

LIGHT BUT STRONG

The brand new Amer 94 Twin offers the new concept of ultimate efficiency with no compromise in the luxury yacht experience. All of this while offering the best fuel economy in its class.

New vessel and 5 year engine warranties apply.

Vessel Details

After much testing and experimentation, we have found that adopting the Volvo IPS system in our yacht, the diesel consumption is reduced significantly. As a result, we also expect to see much less air pollution.

In our pursuit to excel our previous record performance of 3,5 liter per mile at economical cruise during displacement cruise. To obtain this result we have developed a new hull construction light but solid, using more carbon fiber and vacuum system to develop the lightest, but strongest hull possible.

Accommodations

- 5 Guest Cabins
- 1 Full Beam Master Stateroom
- 2 V.I.P. Cabins
- 2 Guest Cabins with Twin Berths
- Crew: 2 Crew Cabins

Electrical

We used lithium batteries and three parallel variable speed generators in 380 Volt that will also provide a smarter AC power generation system that is not only more economical, but will perform better in overall efficiency. A gyro stabilizer that will not add drag to the yacht, and we will diligently study the weight distribution on board.

Engine and Mechanical Details

5000 liters central structural tank and the brand new 2 x IPS 1350 Volvo Penta launched last year at Cannes Boat Show. The engine package is not only powerful, but light and in a compact package that will give us a much larger living space inside the yacht. This allows for a 5 stateroom configuration.

Predictive Data

Economical cruise at displacement 1000 rpm at 9 knots speed with a large autonomy which will permit a non-stop navigation from Sanremo to Venice and no refuel (1,600 nautical miles autonomy).

Cruise speed 23 +/- 1 knots 14 liters/nautical mile and autonomy for 350/360 miles

Max speed 27 +/- 1 knots 15 liters/nautical mile and autonomy for 340/350 miles

As you can see, both cruise and max speed have a similar consumption

We are investing as automotive and aeronautical fields in the weight saving research

Some examples just to give an idea of our investment:

Using lithium batteries for each saved kg we pay additional € 150/kg

Using carbon fiber for each saved kg we pay additional € 58/kg

Using vacuum system each saved kg we pay additional € 7,4/kg

Using three parallel variable speed generators each saved kg we pay additional €55/kg

Mechanical Disclaimer

Engine and generator hours are as of the date of the original listing and are a representation of what the listing broker is told by the owner and/or actual reading of the engine hour meters. The broker cannot guarantee the true hours. It is the responsibility of the purchaser and/or his agent to verify engine hours, warranties implied or otherwise and major overhauls as well as all other representations noted on the listing brochure.

Disclaimer

The company offers the details of this vessel in good faith but cannot guarantee or warrant the accuracy of this information nor warrant the condition of the vessel. A buyer should instruct his agents, or his surveyors, to investigate such details as the buyer desires validated. This vessel is offered subject to prior sale, price change or withdrawal without notice.



Profile



Starboard View



Running View



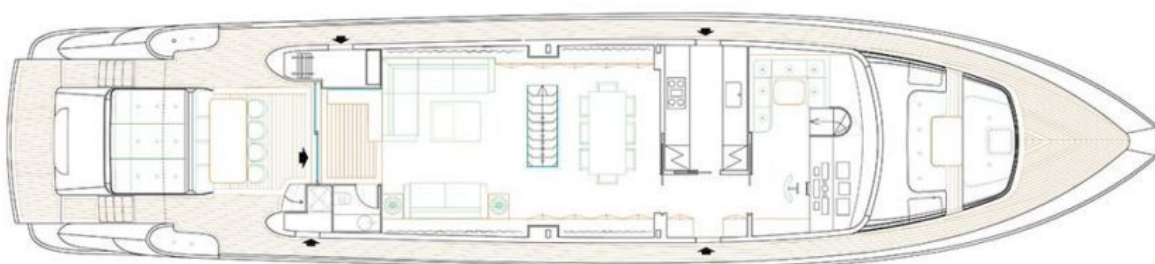
Running View



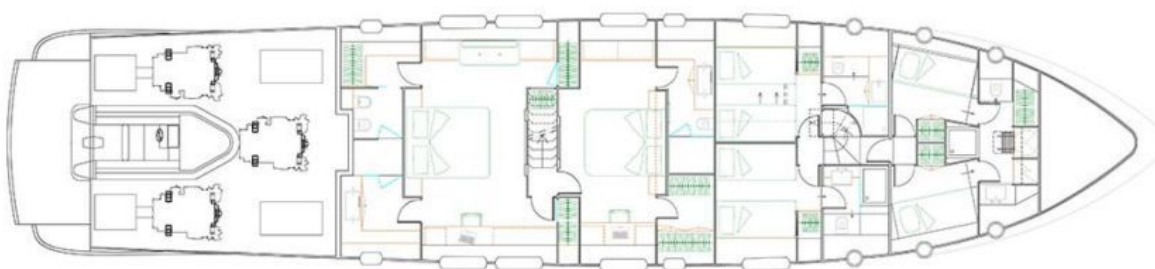
Stern Running View

AMER '94
3 motori Volvo Penta
4 cabine

PERMARE s.r.l.
via del Castello, 17 Portofino tel. 0184 504050 e-mail: info@gruppopermare.it
Sanremo



MAIN DECK



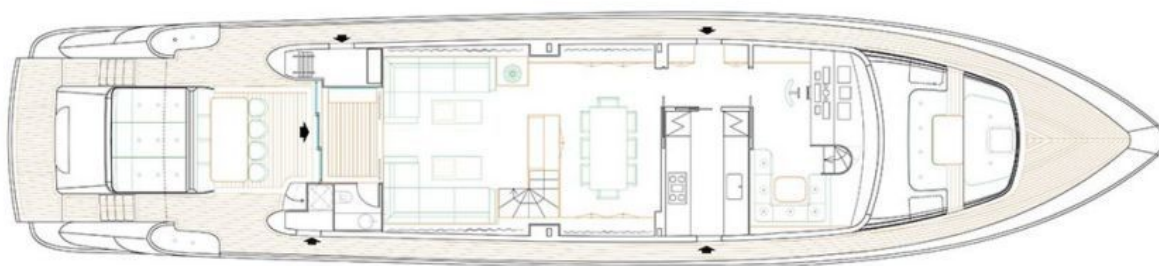
LOWER DECK

STEFANO TINI ARCHITETTO
yacht design

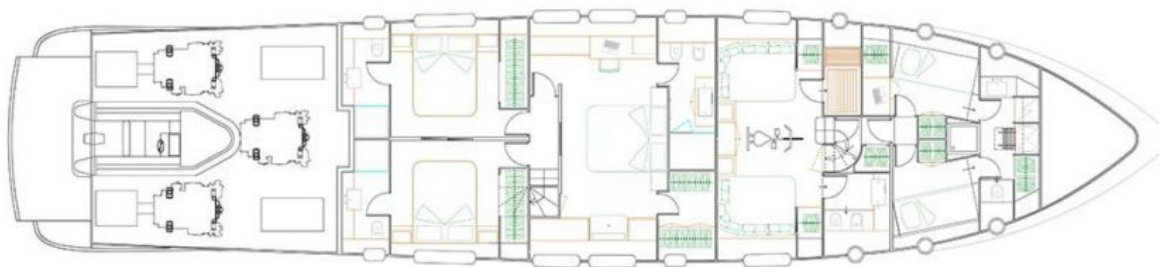
Layout Drawing

AMER '94
3 motori Volvo Penta
4 cabine

PERMARE s.r.l.
via del Castello, 17 Portofino tel. 0184.504050 e-mail: info@gruppopermare.it
Sanremo



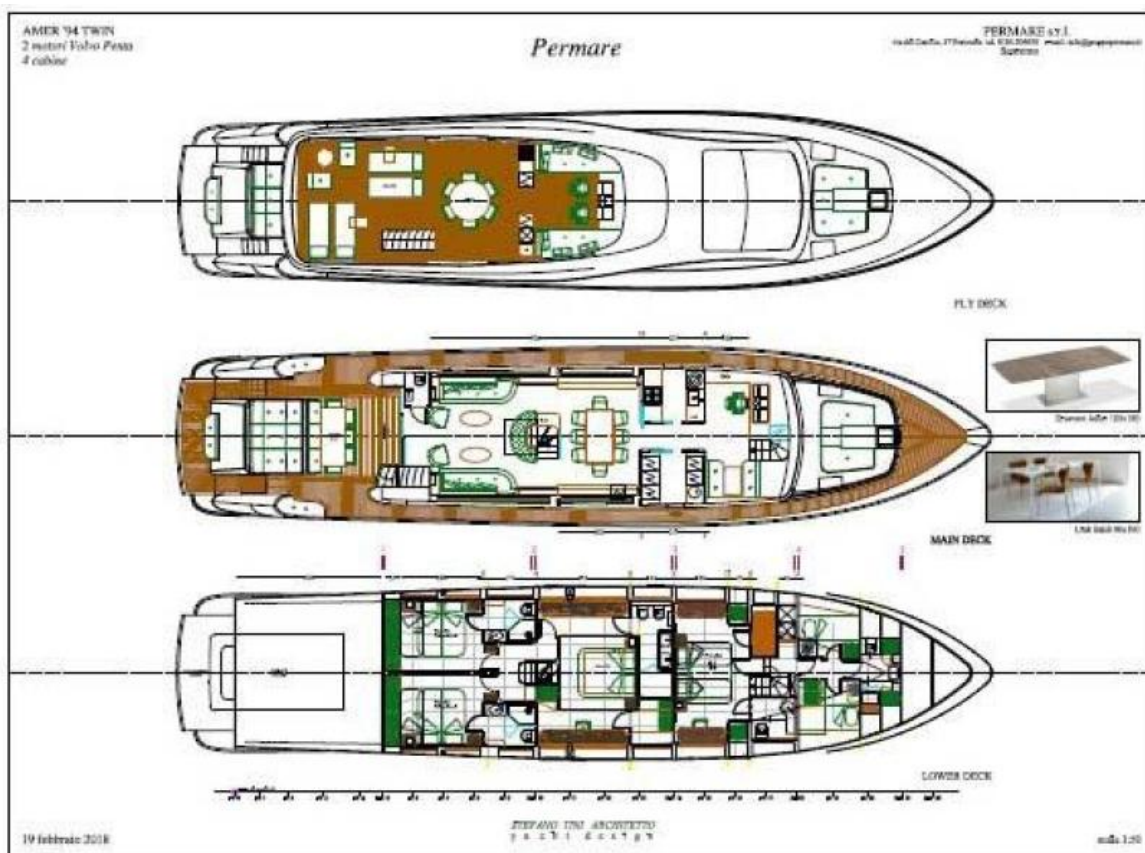
MAIN DECK



LOWER DECK

STEFANO TINI ARCHITETTO
yacht design

Layout Drawing



Layout