



ADVENTURESS

42' (12.80m) 1986 Bertram Convertible
Pensacola Florida United States



OVERVIEW

\$125,000

Manufacturer:	Bertram	Hull Material:	Fiberglass
Engines:	2 Detroit Diesel	Cruise Speed:	MPH
Engine Model:	6V92	Max Speed:	35 MPH
Engine HP:	450	Cabins/Heads:	2 / 1
Beam:	14' 10"	Fuel Type:	Diesel
Max Draft:	4' 0"	Fuel:	488 G (1847.28 L)
Water:	150 G (567.81 L)		



Brian Franc brian@unitedyacht.com

1-850-428-0866

Data Sheet

Category: Convertible Boats
Subcategory: Sport Fishing
Condition: Used
Model Year: 1986
Beam: 14'10" (4.52m)
Max Draft: 4' (1.22m)
LOA: 42' 6" (12.95m)
Cabins: 2
Heads: 1

Maximum Speed: 35 MPH
MPH
Range NM: 392
Fuel Type: Diesel
Hull Material: Fiberglass
Hull Shape: Deep Vee

lbs
Dry Weight: 39400 lbs
Fuel Tank: 488 gal (1847.28 liters)
Fresh Water: 150 gal (567.81 liters)
Imported: No
Builder: Bertram

Engines/Generators

Engine 1

Detroit Diesel
6V92
Inboard
450HP
335.56KW
Fuel: Diesel
Year: 1986
Serial #: 6VF129380
Location: Port

Engine 2

Detroit Diesel
6V92
Inboard
450HP
335.56KW
Fuel: Diesel
Year: 1986
Serial #: 6VF129393
Location: Starboard

Summary/Description

1986 Bertram 42 Convertible - Upgraded, updated CLASSIC SPORTFISH! Built to handle offshore sea conditions. Comfortable accommodations for further destinations. Nicely outfitted for fishing. Price aggressively reduced to sell NOW!

1986 Bertram 42 Convertible

\$5K PRICE REDUCTION

This 1986 42' Bertram Convertible has had many upgrades including recent rebuilt Twin 6V92 DD engines, newly painted hull and Cockpit plus many more upgrades and enhancements making this Classic Sportfish one of the finest on the market. Don't Miss out!!

Manufacturer Provided Description

For all its tranquil lines and sensuous styling, the Bertram 42 Convertible is one hardworking, practical boat. It handles tough weather like a seasoned pro. Bertram's high-tech engineering and tough construction give this 42-footer all the strength and durability one could ask for without slowing her down. She has a cruising range of almost 400 miles and a top speed of 35 miles an hour, which makes for refreshing rides up top or comfortable cruising below. Beautiful lush fabrics and teak veneer accent luxury features, which include a giant salon with a convertible lounge. The galley offers a myriad of space and can be equipped to create anything from simple sandwiches to gourmet meals. A full-size refrigerator and a range with an oven are only a few standard necessities. What passengers don't notice right away is all the additional space. There is a pantry that's more than handy, an above-counter sliding locker for additional storage, even a hidden storage opening through a countertop hatch. Continuing below is a master stateroom that's high, wide and handsome, with a large bed and a private head with a stall shower. The forward cabin, too, makes imaginative use of space, with two extra-large berths and an adjoining head with a shower.

Recent Improvements/ Enhancements

- **Engines Overhauled <500 hours ago**
- **Engines Retuned <100 hours ago**
- **Newly Painted Vessel - Ice Blue Hull**
- **New Turbo Wraps**
- **Props Repitched and Balanced**
- **New Bottom Job Nov. 2021**
- **New A/C Pump**
- **New Shaft Longs (Non Dripless)**
- **New SS Rub Rail**
- **New Bow Pulpit**
- **New Windlass, Rode and Chain**
- **Glendenning Rebuilt**
- **Refinished Woodwork - Staterooms and Salon**
- **New TV's Salon and Staterooms**
- **New Transducer - Wired to Flybridge**
- **LED Lights - Engine Room**
- **New Autopilot**
- **New Helm Dash - Flybridge-Not Installed**

- **New Fireboy System - Engine Room**

Exclusions

- Owner's Personal Items

Mechanical Disclaimer

Engine and generator hours are as of the date of the original listing and are a representation of what the listing broker is told by the owner and/or actual reading of the engine hour meters. The broker cannot guarantee the true hours. It is the responsibility of the purchaser and/or his agent to verify engine hours, warranties implied or otherwise and major overhauls as well as all other representations noted on the listing brochure.

Disclaimer

The company offers the details of this vessel in good faith but cannot guarantee or warrant the accuracy of this information nor warrant the condition of the vessel. A buyer should instruct his agents, or his surveyors, to investigate such details as the buyer desires validated. This vessel is offered subject to prior sale, price change or withdrawal without notice.



Starboard Side At Dock



Foredeck Bow Pulpit



Foredeck And Bow



Salon



Salon To Port



Salon Looking Starboard



Salon TV



Salon Looking Aft



Galley



Galley Microwave



Refrigerator (New)



New Refrigerator/Freezer



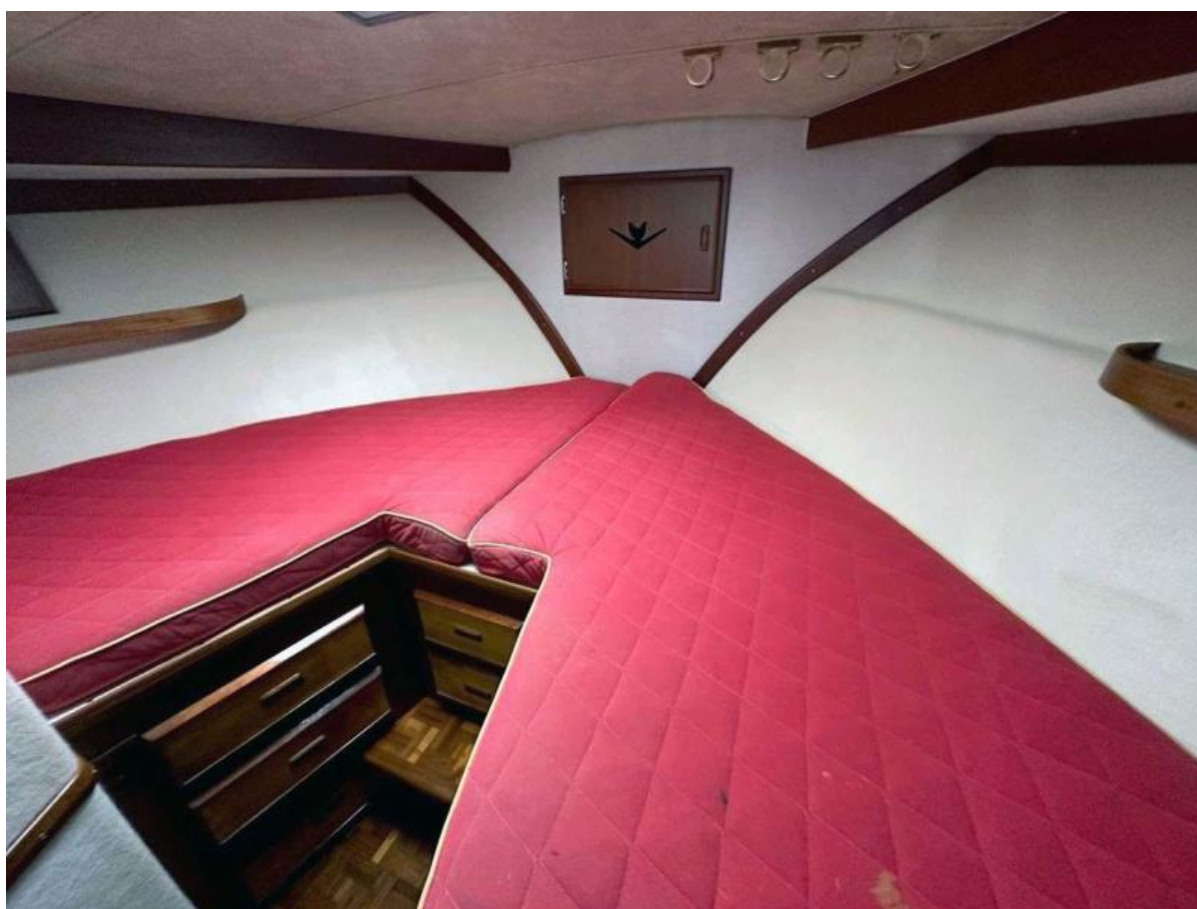
Main Stateroom



Stateroom TV



Stateroom Storage



Forward Stateroom



Main Head



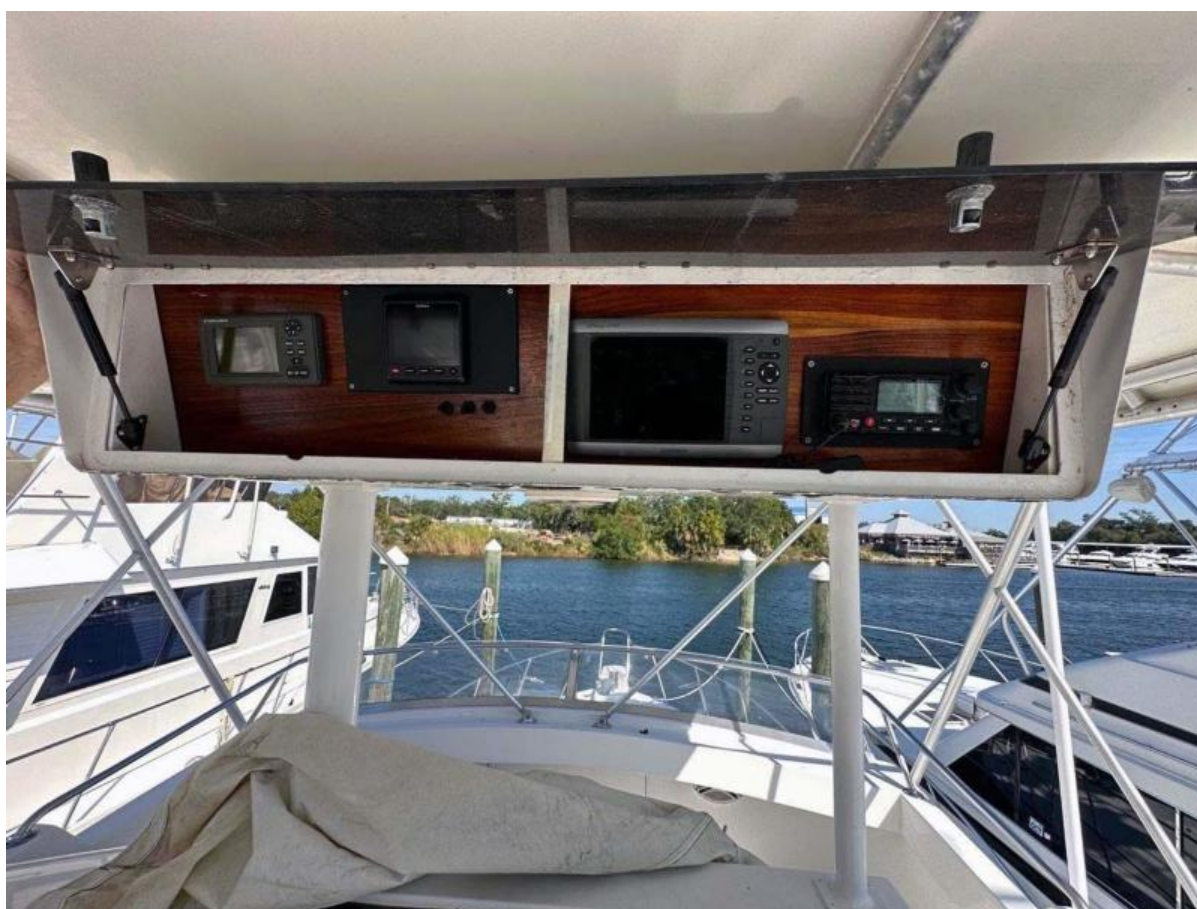
Vanity Enclosed Shower



Shower Bench



Flybridge Gauges



Flybridge Electronics OH



Helm Seat



Aft Controls Cockpit



Cockpit Tackle Drawers



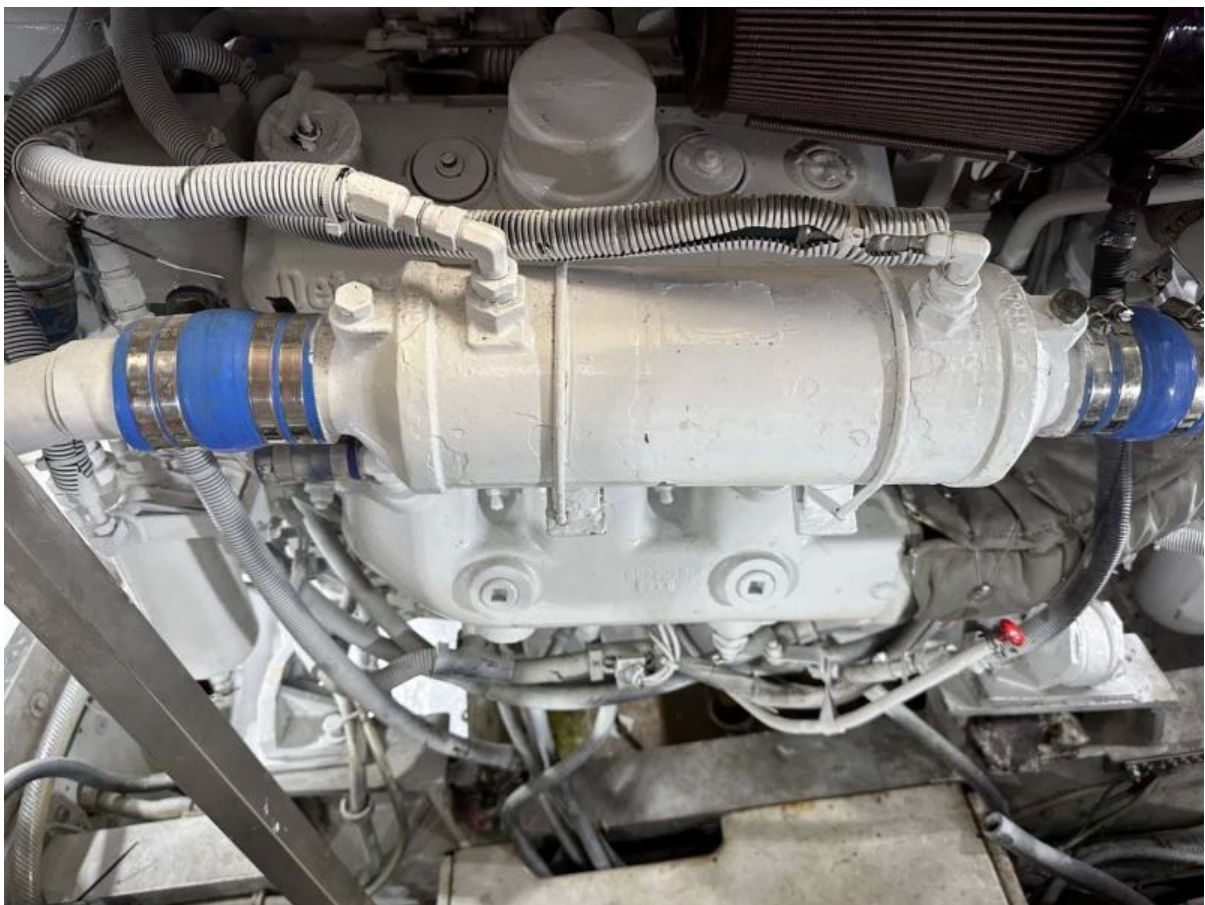
Fishing Tackle Drawers



Cockpit



Cockpit And Fighting Chair



Engine



Profile On The Hard



Starboard Aft Quarter



Stern View