



And Praise The Lord

52' (15.85m) 2007 Bluewater Yachts 5200 Custom
League City Texas United States



OVERVIEW

Manufacturer:	Bluewater Yachts		
Engines:	2 Cummins	Hull Material:	Fiberglass
Engine Model:	QSB 5.9-380 HO	Cruise Speed:	15 Knots
Engine HP:	380	Max Speed:	18 Knots
Beam:	14' 6"	Cabins/Heads:	2 / 2
Max Draft:	"	Fuel Type:	Diesel
Water:	136 G (514.82 L)	Fuel:	391 G (1480.1 L)

\$199,995



Data Sheet

Category: Motor Yachts
Subcategory: Flybridge
Condition: Used
Model Year: 2007
Beam: 14'6" (4.42m)
Min Draft: 2' 6" (0.76m)
LOA: 52' (15.85m)
Cabins: 2
Sleeps: 6
Heads: 2

Maximum Speed: 18 Knots
Cruise Speed: 15 Knots
Fuel Type: Diesel
Hull Material: Fiberglass

Displacement: 32000 lbs
Fuel Tank: 391 gal (1480.1 liters)
Fresh Water: 136 gal (514.82 liters)
Holding Tank: 60 gal (227.12 liters)
HIN/IMO: BTL52083H607
Stock #: BRA8088-CW

Engines/Generators

Engine 1

Cummins
QSB 5.9-380 HO
Inboard
380HP
283.37KW
Fuel: Diesel
Hours: 1100
Hours Date: 07-11-2023
Year: 2007
Serial #: 46605547
Location: Port

Engine 2

Cummins
QSB 5.9-380 HO
Inboard
380HP
283.37KW
Fuel: Diesel
Hours: 1100
Hours Date: 07-11-2023
Year: 2007
Serial #: 466055832
Location: Starboard

Summary/Description

For Sale

2007 Bluewater Yachts 5200 Custom "And Praise The Lord" w/Cummins Diesel Power

- Hydraulic Lift Platform
- Side Power Bow Thruster
- Fiberglass Hard Top over Flybridge
- Three-Sided Strata Enclosure
- Large 2 Stateroom 2 Head Layout
- Washer/Dryer Combo
- Only 14'5" to Top of Hardtop
- 441 Square Foot of Headroom Living Area in Salon

Cash Only - As is Where is

Overview

From the seller:

- Our 2007 Bluewater 5200 custom series is like living aboard a condo with a great upper helm and all the amenities! There is no comparison with ceiling height and ingress egress to the main salon to most other yacht's of this size. This motor yacht was designed as a bi-boat that can go many places even in thin water. Bluewater yachts are built to be easy to handle at sea, yet would also be able to be nosed up on a sandy beach. That is what Bluewater founder, Jim Kapmeier, intended and according to reputation, that is what he achieved! It is a perfect live aboard with many new furnishings and is turn-key ready for a new owner. This yacht was the premiere boat in the 2008 Miami Boat Show and has many upgrades! We bought the boat from the original owner just one year ago.
- Starting in the bow is the guest stateroom. This features a large centerline queen berth with storage drawers under, reading and indirect lights, an overhead hatch and individual air conditioning control. Cedar lined closet, shelved closet, mounted TV, and storage closets both starboard and port complete bow cabin. A full ensuite head with sink and vanity, Hot & Cold pressure water, freshwater marine toilet w/holding tank and separate tub w/shower. Three steps up is the main salon. To starboard is the fully equipped helm station. This has a complete instrument package, hydraulic steering, Mathers electronic engine controls, synchronizer and bow thruster control. Opposite to port is a large sofa which pulls out to form a large double berth. Aft of the sofa is a semi-circular banquette (offset with mirrored wall and oversized brass clock) which seats four comfortably, it can also be lowered to make into an extra berth with its own mattress. Across to starboard is the large, fully equipped galley. A new microwave/convection oven, 2 burner electric cooktop, double sinks, apartment size refrigerator/freezer and dishwasher along with 5 self locking cabinets and 4 drawers for storage. The owner's cabin is aft, with a walkaround queen-size berth, 2 cedar-lined closets, one shelved and complete with organized tools, (boxed and labeled). The ensuite head has a sink, vanity, H&C pressure water, freshwater marine toilet with holding tank and a tub with shower. A mounted TV and full mirror vanity complete the aft cabin, with individual A/C controls.

Salon

The salon is very open and spacious. Sliding door entrance on starboard side at lower helm and sliding doors all the way aft.

- Ultraleather Sleeper Sofa
- Lower Helm w/Controls
- Crescent Seating Dinette Table

Galley

- Breakfast Bar w/Space for 2 Stools
- Princess Two Burner Cooktop
- GE Profile Microwave Oven
- GE Refrigerator/Freezer Full Sized
- Double Sink
- Whirlpool Dish Washer
- Built-In Storage

Master Stateroom

- Large Aft Cabin w/En-Suite Head w/Stall Shower
- Built-in Storage Cabinets
- Parts Inventory w/Labeled Bins
- Natural Lighting
- Overhead Lighting
- Engine Access

Master and Guest Heads

- Porcelain Raritain Toilets
- Jabsco Macerator Pump
- Deck Pump Out Fitting
- 60 Gallon Black Water Capacity

Electronics

- Raymarine Ray 54 VHF
- Raymarine Ray 53 VHF
- Garmin GPS Map 5212
- Raymarine ST60 Tridata (2)
- Garmin GPS Map 5212 Radar
- Raymarine ST8002 w/Remote
- (2) Ritchie Compass
- 12V Horn
- Two Guest- Search Lights
- (2) 13" Flat Screens in both Staterooms
- 26" Flat Screen in Salon
- KVH Satellite
- Salon Stereo w/4 Speakers
- Bridge AM/FM/CD Stereo w/Speakers

Electrical System

- House & Starting Batteries
- Xantrex Invertor/Charger
- Shore Power Cord
- Onan MDKBN DIESEL GENERATOR 13.5KW

Flybridge and Entertainment Decks

Large amount of seating for lounging and entertaining. Electric Grill, Refrigerator and large hard top.

- Dual Width Helm Station w/Full Electronics & Engine Controls
- Starboard Side Wet Bar w/ Jenn Air Grills
- Large, Integrated Flybridge Seating/Sunpad area w/Cushions & Covers
- 3 Sided Strata Glass Enclosures

Cockpit and Decks

- Maxwell 1500 45lb. CQR Anchor w/All Chain Rhode
- Two 8" Bow Cleats
- Two 8" Cleats at Forward Quarter & Amidships
- Four 10" Cleats Aft
- Stainless Railing from Bow to Amidships, Around Bridge Deck and Aft Deck

Exclusions

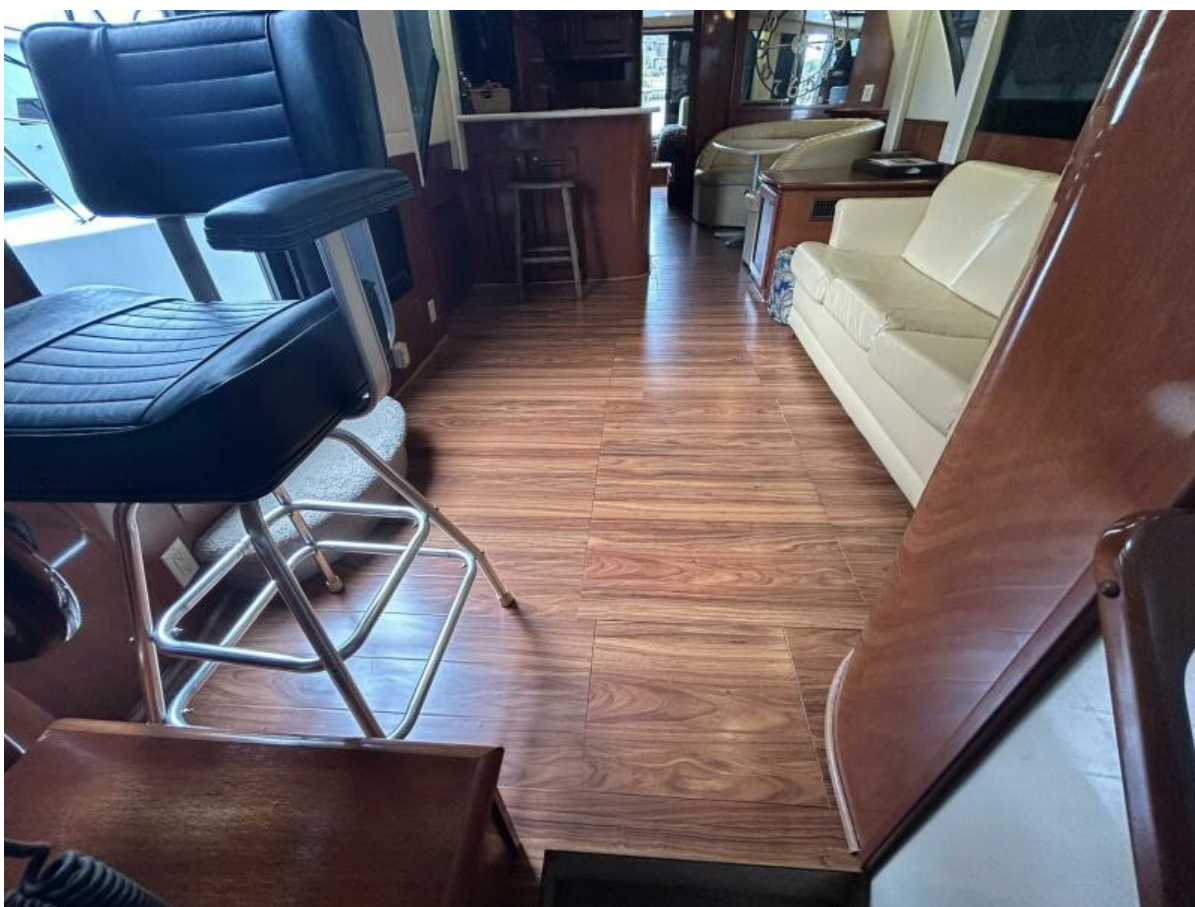
- Seller's Personal Items
- (Texas Sign if Buyers not from Texas)

Broker's Remarks

Well kept and very nice. Ready to go for the loop, live aboard or cruise. Seller wants to make sure this is passed on to the right buyer.



2007 Bluewater Yachts 5200 Custom "And Praise The Lord"



2007 Bluewater Yachts 5200 Custom



2007 Bluewater Yachts 5200 Custom



2007 Bluewater Yachts 5200 Custom



2007 Bluewater Yachts 5200 Custom



2007 Bluewater Yachts 5200 Custom



2007 Bluewater Yachts 5200 Custom



2007 Bluewater Yachts 5200 Custom



2007 Bluewater Yachts 5200 Custom



2007 Bluewater Yachts 5200 Custom



2007 Bluewater Yachts 5200 Custom



2007 Bluewater Yachts 5200 Custom



2007 Bluewater Yachts 5200 Custom



2007 Bluewater Yachts 5200 Custom



2007 Bluewater Yachts 5200 Custom



2007 Bluewater Yachts 5200 Custom



2007 Bluewater Yachts 5200 Custom



2007 Bluewater Yachts 5200 Custom



2007 Bluewater Yachts 5200 Custom



2007 Bluewater Yachts 5200 Custom



2007 Bluewater Yachts 5200 Custom



2007 Bluewater Yachts 5200 Custom



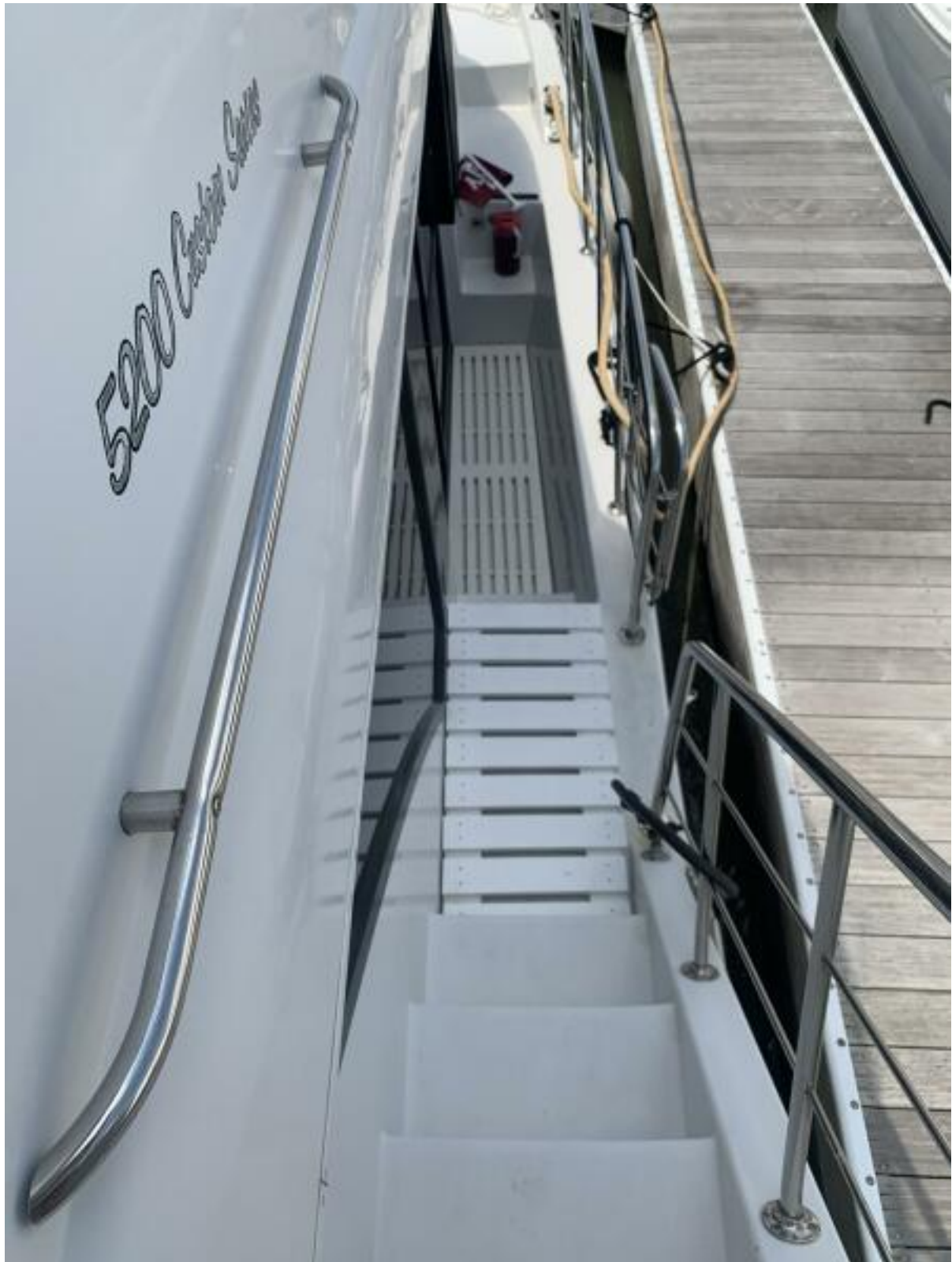
2007 Bluewater Yachts 5200 Custom



2007 Bluewater Yachts 5200 Custom



2007 Bluewater Yachts 5200 Custom



"And Praise the Lord!" is a 2007 Bluewater Yachts 5200 w/Cummins Diesel Power Hydraulic Lift Platform Side Power Bow Thruster Fiberglass Hard Top over Flybridge Three Sided Strata Enclosure Large 2 Stateroom 2 Head Layout Washer/Dryer Combo Only 14'5" to T



“And Praise the Lord!” is a 2007 Bluewater Yachts 5200 w/Cummins Diesel Power Hydraulic Lift Platform Side Power Bow Thruster Fiberglass Had Top over Flybridge Three Sided Strata Enclosure Large 2 Stateroom 2 Head Layout Washer/Dryer Combo Only 14’5” to T



"And Praise the Lord!" is a 2007 Bluewater Yachts 5200 w/Cummins Diesel Power Hydraulic Lift Platform Side Power Bow Thruster Fiberglass Hard Top over Flybridge Three Sided Strata Enclosure Large 2 Stateroom 2 Head Layout Washer/Dryer Combo Only 14'5" to T



“And Praise the Lord!” is a 2007 Bluewater Yachts 5200 w/Cummins Diesel Power Hydraulic Lift Platform Side Power Bow Thruster Fiberglass Hard Top over Flybridge Three Sided Strata Enclosure Large 2 Stateroom 2 Head Layout Washer/Dryer Combo Only 14’5” to T



“And Praise the Lord!” is a 2007 Bluewater Yachts 5200 w/Cummins Diesel Power Hydraulic Lift Platform Side Power Bow Thruster Fiberglass Hard Top over Flybridge Three Sided Strata Enclosure Large 2 Stateroom 2 Head Layout Washer/Dryer Combo Only 14’5” to T



“And Praise the Lord!” is a 2007 Bluewater Yachts 5200 w/Cummins Diesel Power Hydraulic Lift Platform Side Power Bow Thruster Fiberglass Had Top over Flybridge Three Sided Strata Enclosure Large 2 Stateroom 2 Head Layout Washer/Dryer Combo Only 14’5” to T