



Plan B

68' (20.73m) 2021 Viking 68 Convertible
Cabo Rojo Puerto Rico



OVERVIEW

Manufacturer:	Viking		
Engines:	2 MTU	Hull Material:	Fiberglass
Engine Model:	12V2000 M96X	Cruise Speed:	35 Knots
Engine HP:	2002	Max Speed:	41 Knots
Beam:	19' 2"	Cabins/Heads:	4 / 5
Max Draft:	5' 5"	Fuel Type:	Diesel
Water:	344 G (1302.18 L)	Fuel:	2377 G (8997.92 L)

\$5,995,000



Data Sheet

Category: Convertible Boats
Subcategory: Sport Fishing
Condition: Used
Model Year: 2021
Beam: 19'2" (5.84m)
Max Draft: 5' 5" (1.65m)
LOA: 68' (20.73m)
Cabins: 4
Heads: 5

Maximum Speed: 41 Knots
Cruise Speed: 35 Knots
Fuel Type: Diesel
Hull Material: Fiberglass

Displacement: 115306 lbs
Fuel Tank: 2377 gal (8997.92 liters)
Fresh Water: 344 gal (1302.18 liters)
HIN/IMO: VKY68025I021
Stock #: BRA2428-APM/JL

Engines/Generators

Engine 1

MTU
12V2000 M96X
Inboard
2002HP
1492.89KW
Fuel: Diesel
Hours: 1125
Serial #: 54410118
Location: Port

Engine 2

MTU
12V2000 M96X
Inboard
2002HP
1492.89KW
Fuel: Diesel
Hours: 1125
Serial #: 54410115
Location: Starboard

Generator 1

Onan
29KW

Generator 2

Onan
29KW

Summary/Description

For Sale

2021 Viking 68 Convertible *Plan B* was built to an exceptionally high level -- this yacht is missing nothing! She features the ultimate electronics package including Omni Sonar, tuna tubes, air-conditioned mezzanine, Seakeeper, a water maker with spot zero, two ice chippers and a Willy Vac. She has the most powerful MTU option available: the upgraded 12V2000 M96X engines only have 1100 hours and come with Extended Warranty through 05/2026. *Plan B* is also stunning -- she has a beautiful interior, custom faux teak and 4 staterooms. This is a unique find in today's market for a low-hour, well-built Convertible yacht, schedule a showing today to see *Plan B*!

Salon

- Hideaway TV
- Walnut Cocktail Table
- Ice Maker
- Electric Door
- Dewberry Ultraleather Sofa in Whitewater Color
- Walnut Crown Molding
- Walnut Storage Cabinets
- Day Head with Cambria Britanica Vanity, Brushed Nickel Fixtures & Amtico Sole
- Fabrica Aspen Stone Carpet
- Electric Panel
- Partial & Full Canvas Carpet Runners
- Custom Amtico Sole (at Entranceway)
- Custom Headliner (Pearl Finesse Legend Eggshell with Walnut Strips)
- Poseidon Classic Ivory Blinds
- Table Cover
- Sofa Slip Cover (Sunbrella to Match Carpet Runners)
- A/C Vents Painted to Match Headliner
- Rite Aire Dehumidifier
- Customized Tackle Storage

Galley & Dinette

- Walnut Dinette Table with U-Shaped Ultraleather Seating
- TV above Dinette
- Three Barstools
- Two Sub-Zero Refrigerators
- Sub-Zero Freezer
- Microwave
- 4 Burner Range

- Trash Compactor
- Custom Amtico Sole
- Cambria Britannicca Countertop with Bevel Edge
- Cambria Britannicca Backsplash (One Continuous Piece with Matching Vein)
- Walnut Backsplash for Island
- 110 V Outlet
- Stainless Steel Sink
- Satin Nickel Faucet
- Walnut Crown Molding
- Dimmer on Overhead LED Lights
- AC Receptacle under Dinette Table
- Dinette Table Cover

Master Stateroom

- Queen-Sized Island Berth
- Hanging Lockers
- Maple Lined Closet
- 32" HD TV
- Sconces
- Walnut End Tables
- Safe (Under Lift Up Bed Top)
- Walnut Crown Molding
- Dimmer on Overhead LED Lights
- Ivory Linens

Master Stateroom Head

- Enclosed Shower with Glass Door
- Custom Amtico Sole
- Cambria Britannicca Vanity with Sink & Mirror
- Headhunter Freshwater Head System
- Brushed Nickel Towel Bar & Rings
- Satin Nickel Faucet & Shower Fixtures
- Linen Storage

Forward VIP Stateroom

- Centerline Queen Berth with Storage Beneath
- TV
- Walnut Storage Cabinets
- Walnut Crown Molding
- Overhead LED Lights with Dimmer
- Forward Bulkhead

Forward Stateroom Head

- Custom Amtico Sole
- Enclosed Shower with Chrome Door
- Headhunter Freshwater Head System

- Cambria Britannica Vanity with Sink & Mirror
- Satin Nickel Faucet & Shower Fixtures
- Brushed Nickel Towel Bar & Rings

Port Guest Stateroom

- Over / Under Bunks
- TV
- Walnut Crown Molding
- Overhead LED Lights with Dimmer
- Walnut Storage Locker

Port Head

- Enclosed Shower with Chrome Door
- Custom Amtico Sole
- Cambria Britannica Vanity with Sink & Mirror
- Satin Nickel Shower Fixtures & Faucet
- Brushed Nickel Towel Bar & Rings
- Headhunter Freshwater Head System

Companionway

- Costa Canvas Carpet Runner with Step Covers
- Walnut Crown Molding
- Walnut Storage Doors
- Companionway Walls in Pearl finesse Legend Eggshell & Mercury
- Washer / Dryer

Cockpit

- Mezzanine
- Teak Sole
- Teak Covering & Coaming Boards
- Removable PBT Swim Ladder
- Tuna Tubes
- Release Marine Trillion Series Fighting Chair with DC Lights
- Fish Box with Split Lid
- Live Well
- Refrigerated Step Box
- Freezer Storage in Mezzanine Seat
- Canvas Covers
- Costa Cockpit Cover
- Transom Swim Steps
- Storage Lockers
- Cruisair "Cool Breeze" Mezzanine Air System
- Costa Cockpit Sunshade
- Second Cablemaster
- Crushed Ice Machine (Discharges to Stbd Mezzanine Box)
- Two 24V 30 Amp Outlets

- Two 12VDC 30 Amp Outlets
- Cockpit Freezer Bait Trays
- Matching Cushions for Mezzanine & Above Tackle Center in Pumice Outdoor Ultraleather (Whitewater Color with Bentley Stitching)
- Deck Fill for Fresh Water Tank
- Tri-Color Lights in Overhang & Under Coaming

Flybridge

- Release Marine Teak Helm Pod
- Upgraded Release Marine Ultraleather Helm Chairs
- VHF Radio ICOM-604
- Compass
- Custom jump seat to accommodate helm chair backrest when taken off
- Costa Plastic Enclosure
- Electronic Single Level Controls for Helm Pod
- Sonar Controller
- Hand Rail
- Helm Console Cover
- Fresh Water Outlet
- Fresh Water Washdown
- Freezer Box
- Refrigerated Drink Box
- Custom Jumpseat
- Removable Flybridge Jumpseat Backrest
- Watermaker Control Panel
- 12V Weatherproof Receptacle
- Electronic Drop-down Overhead Box
- Cushions in Pumice Outdoor Ultraleather (Whitewater Color)

Atlantic Marine Electronics

- Furuno Omni C8H8L 85kHz 600MM Sonar
- (3) Seatronx 17" Touchscreen Display
- (2) Garmin GPSMAP8612 MFD
- Furuno Radar 6' Array DRS25ANXT/6
- Furuno TZTouch
- Furuno FCV1900 Sounder
- Furuno CA50BL-12HR 2KW 50KHZ Transducer
- Furuno CA200B-8B 2KW 200SHX Transducer
- Garmin GSD-26 CHIRP Video Sounder Module
- Airmar PM411 Ultra Wide Beam Tournament Series Sounder
- Sonar Tube Furuno F1918 CH300
- Garmin Reactor 40 STD Autopilot
- (2) ICOM IC-M605 VHF Radios
- (2) Comrod AV90/ Black 16' VHF Antenna
- Upgraded Fusion Stereo with JL Audio
- KVH Tracphone V3
- Aigean Network Marine Wifi
- (4) Gost Wide Angle Cameras (3 in engine room, 1 in salon)
- Gost Security Apparition

- FLIR M364C Color Thermal camera system
- ACR RCL100 LED spotlight
- KVH Tracvision HD7 Satellite TV
- Apple TVs
- URC Remotes
- Garmin GPSMAP8612 MFD (in tower)
- Garmin GPSMAP 1617 17" (in cockpit)
- (8) Lumishore TIX803 Supra Blue / White Underwater Lights

Palm Beach Tower

- Custom Palm Beach Full Tuna Tower and Hardtop
- Rupp Hydraulic Outriggers
- Tower Sunshade
- Rigid Industries 50" LED lightbar in Custom Light Pod Aft
- Rigid Industries 20" LED lightbar in Custom Light Pod Forward
- 3 sided EZ2CY Costa Enclosure
- Lumitec Tri-color LED Lights
- Tower Sunshade Frame Painted Satin Black
- Electric Miya Epoch Super US9 Teaser Reels

Bow

- Lewmar Delta 88lb. Stainless Steel Plow Anchor
- 12' Chain & 300' Line
- Lewmar V4 24VDC Windlass
- Anchor Bracket in Anchor Locker
- Bow Cleats Fore & Aft
- Freshwater Washdown
- Salon Forward Window Mask
- DC Bow Thruster

Crew Stateroom

- Over / Under Bunks
- Flat Screen TV
- Walnut Storage Locker
- Overhead LED Lights with Dimmer
- Walnut Storage Drawers

Crew Head

- Cambria Britannica Vanity with Sink & Mirror
- Enclosed Shower with Chrome Door
- Headhunter Freshwater Head System
- Custom Amtico Sole
- Satin Nickel Shower Fixtures & Faucet
- Brushed Nickel Towel Bar & Rings

Engine Room

- Two Onan 29 KW Generators
- Willy Vac
- 1400 GPH Watermaker with Auto Backflush
- Power: Engines MTU 12v 2000M96 "X"
- Spot Zero Double Pass Water Purifier
- Electrosea System
- 24 V Fuel Priming Pumps
- Back-up Fuel Transfer Pump in Parallel
- Back-up Pump for Seawater System (Plumbed in Parallel)
- Monitoring System
- Headhunter Fresh Water Pump
- Two 4 Drawer Tool Boxes (12" wide)
- Access Door to Crew Quarters

Hull

- Seakeeper Gyro SK 26
- Additional Fuel Tank (For A Total Of 3Tanks)
- Snow White Hull
- Custom Metallic Boot Stripe
- Faux Teak Toe Rail

Mechanical Disclaimer

Engine and generator hours are as of the date of the original listing and are a representation of what the listing broker is told by the owner and/or actual reading of the engine hour meters. The broker cannot guarantee the true hours. It is the responsibility of the purchaser and/or his agent to verify engine hours, warranties implied or otherwise and major overhauls as well as all other representations noted on the listing brochure.

Disclaimer

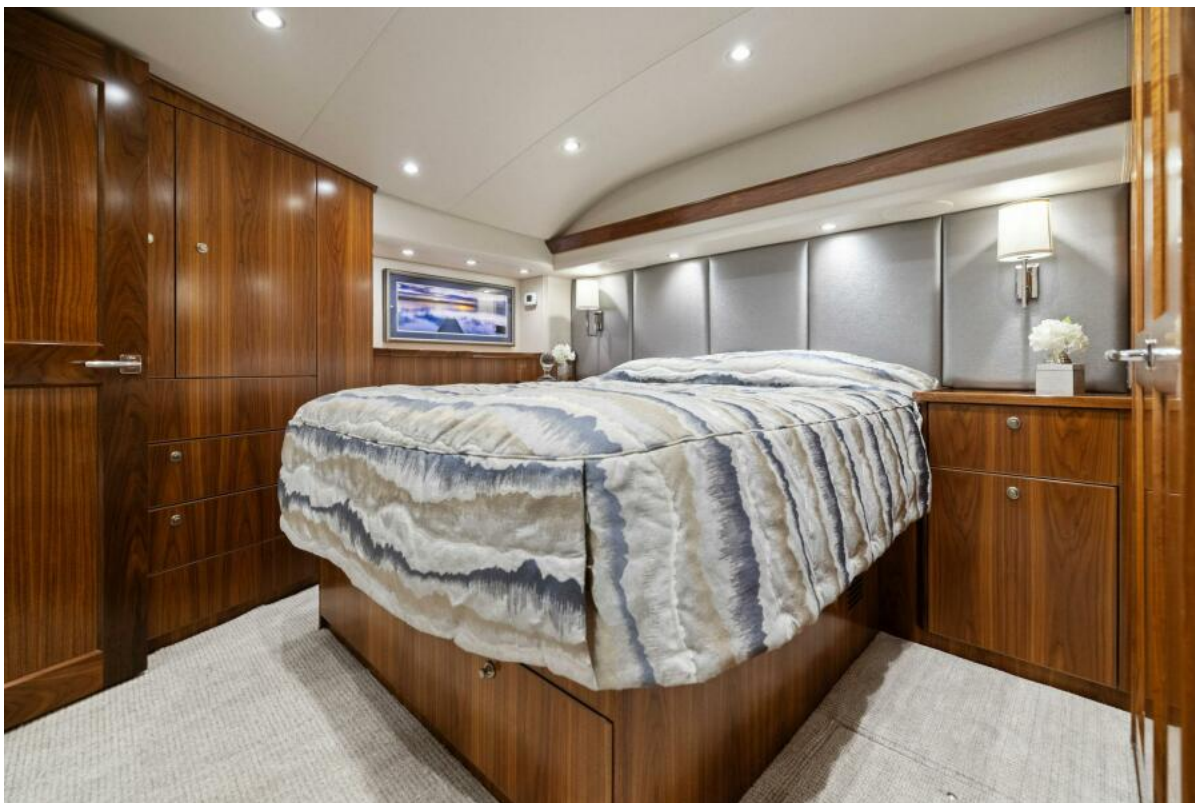
The company offers the details of this vessel in good faith but cannot guarantee or warrant the accuracy of this information nor warrant the condition of the vessel. A buyer should instruct his agents, or his surveyors, to investigate such details as the buyer desires validated. This vessel is offered subject to prior sale, price change or withdrawal without notice.



2021 Viking 68 Convertible 'Plan B'



2021 Viking 68 Convertible 'Plan B' Salon



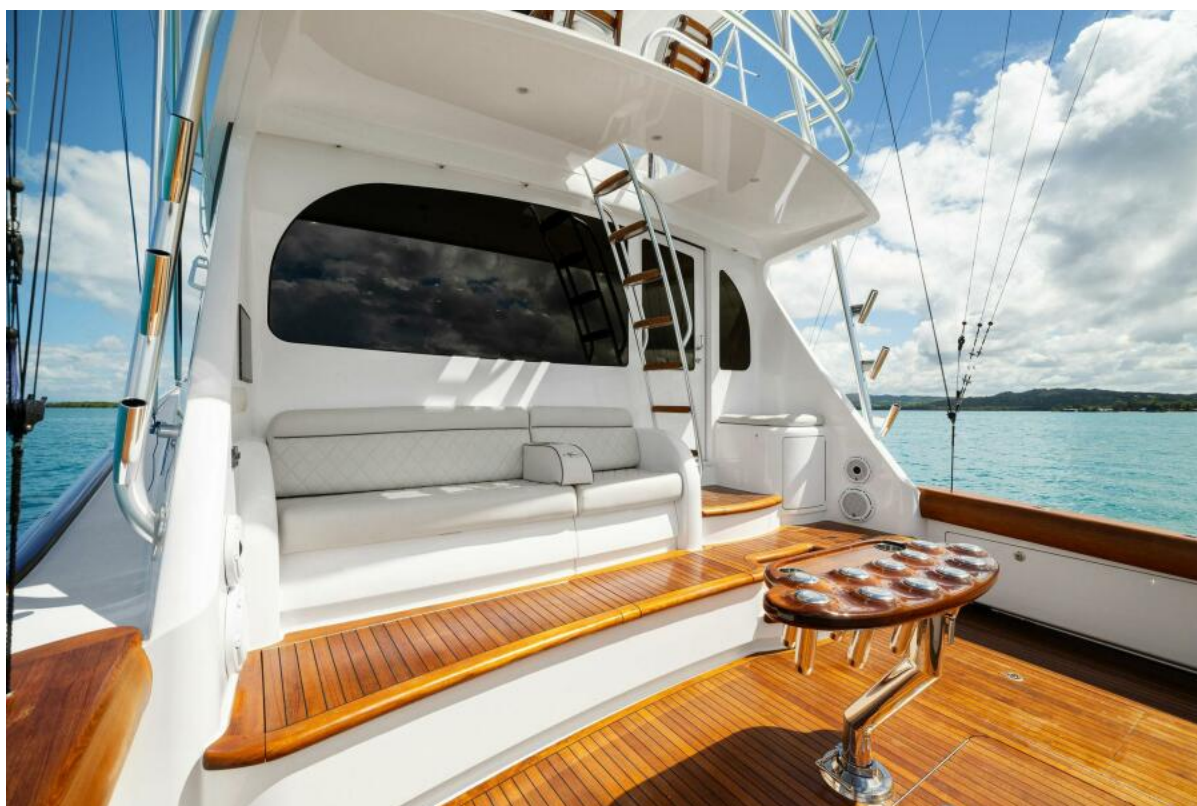
2021 Viking 68 Convertible 'Plan B' Master Stateroom



2021 Viking 68 Convertible 'Plan B' Flybridge



2021 Viking 68 Convertible 'Plan B' Aerial View



2021 Viking 68 Convertible 'Plan B' Cockpit