



Sea Weez

35' (10.67m) 2016 Strike 35
Beaufort North Carolina United States



OVERVIEW

\$169,000

Manufacturer:	Strike		
Engines:	1 Cummins	Hull Material:	Fiberglass
Engine Model:	QSB6.7	Cruise Speed:	24 Knots
Engine HP:	550	Max Speed:	30 Knots
Beam:	11' 0"	Cabins/Heads:	/
Max Draft:	3' 0"	Fuel Type:	Diesel
Water:		Fuel:	300 G (1135.62 L)



Data Sheet

Category: Sport Fishing
Condition: Used
Model Year: 2016
Beam: 11' (3.35m)
Max Draft: 3' (0.91m)
LOA: 37' 2" (11.33m)

Maximum Speed: 30 Knots
Cruise Speed: 24 Knots
Fuel Type: Diesel
Hull Material: Fiberglass

Dry Weight: 14000 lbs
Fuel Tank: 300 gal (1135.62 liters)
HIN/IMO: IBK35026D516

Engines/Generators

Engine 1

Cummins
QSB6.7
Inboard
550HP
Fuel: Diesel

Summary/Description

From the moment you step on this Strike 35 you will recognize the quality put into every detail of the build, Strike yachts were built and designed to be serious fishing platforms, the boats have been called " Angling Paradise".

From the moment you step on this Strike 35 you will recognize the quality put into every detail of the build, Strike yachts were built and designed to be serious fishing platforms, the boats have been called " Angling Paradise". " Sea Weez" is a 2016 35 Strike powered by a single Cummins QSB 6.7 with 790 hours, easily cruise at 24 knots and top out 30 knots.

FISHING EQUIPMENT

Hard top T-top with 3 side enclosure and wingsOutriggers crank out type

Center Rigger

Stand up battle station in cockpit with 6 rocket launchers

Pancake Teaser reels

Livewell

Fresh and saltwater washdown

(8) gunnel mount rod holders

(5) rocket launchers back of T-top

(3) In deck fish boxes

Livewell

Transom Door

OTHER EQUIPMENT

Bow pulpit with anchor rollerSpreader lights

Bow Thruster

Integrated Swim Platform with swim ladder

Trim Tabs

Hydraulic Steering

Electronic Engine Controls

Coaming Pads

Battery Charger

Oil Change system



30 Amp Shore Power

CABIN

V-berth

Overhead rod storage

Manual pump marine head

Disclaimer

The company offers the details of this vessel in good faith but cannot guarantee or warrant the accuracy of this information nor warrant the condition of the vessel. A buyer should instruct his agents, or his surveyors, to investigate such details as the buyer desires validated. This vessel is offered subject to prior sale, price change or withdrawal without notice.



2016 Strike (1)



2016 Strike (2)



2016 Strike (3)



2016 Strike (4)



2016 Strike (5)



2016 Strike (6)



2016 Strike (7)



2016 Strike (8)



2016 Strike (9)



2016 Strike (10)



2016 Strike (11)



2016 Strike (12)



2016 Strike (13)



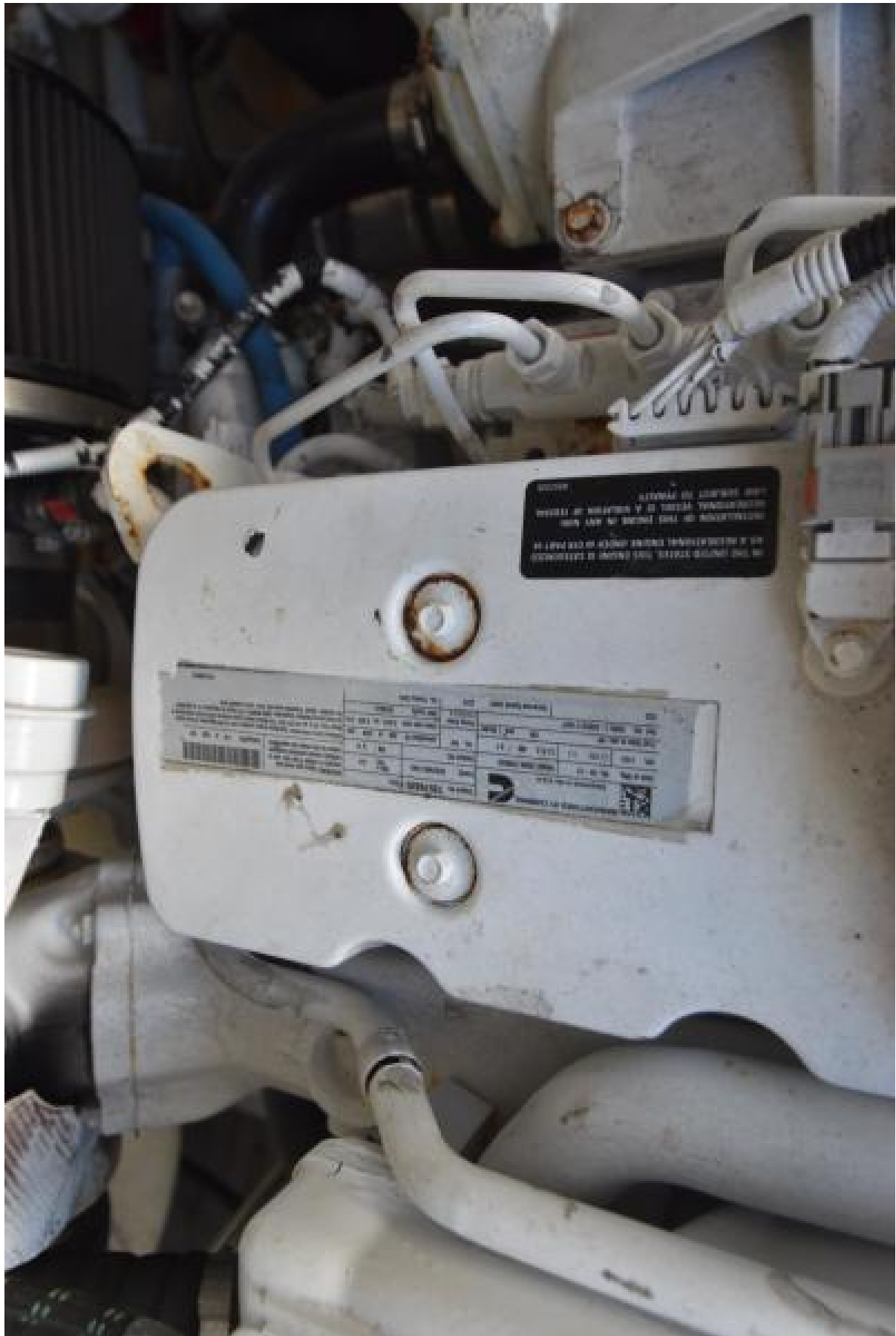
2016 Strike (14)



2016 Strike (15)



2016 Strike (16)



2016 Strike (17)



2016 Strike (18)



2016 Strike (19)



2016 Strike (20)



2016 Strike (21)

1-252-342-5668



2016 Strike (23)



2016 Strike (24)



2016 Strike (25)



2016 Strike (26)



2016 Strike (27)



2016 Strike (28)



2016 Strike (29)



2016 Strike (30)