



Celerity

41' (12.50m) 2019 Regulator 41FS
Hampton Virginia United States



OVERVIEW

Manufacturer:	Regulator	Hull Material:	Fiberglass
Engines:	4 Yamaha	Cruise Speed:	37 Knots
Engine Model:		Max Speed:	52 Knots
Engine HP:	425	Cabins/Heads:	1 / 1
Beam:	12' 6"	Fuel Type:	Gas/Petrol
Max Draft:	3' 1"	Fuel:	600 G (2271.25 L)
Water:	60 G (227.12 L)		

\$775,000



Data Sheet

Category: Center Consoles
Condition: Used
Model Year: 2019
Beam: 12'6" (3.81m)
Max Draft: 3' 1" (0.94m)
Min Draft: 2' 5" (0.74m)
LOA: 41' 3" (12.57m)
Cabins: 1
Sleeps: 2
Heads: 1

Maximum Speed: 52 Knots
Cruise Speed: 37 Knots
Fuel Type: Gas/Petrol
Hull Material: Fiberglass
Seating Capacity: 14

Dry Weight: 23500 lbs
Fuel Tank: 600 gal (2271.25 liters)
Fresh Water: 60 gal (227.12 liters)
Holding Tank: 13 gal (49.21 liters)
HIN/IMO: DJI41035A919

Engines/Generators

Engine 1

Yamaha
Outboard 4 Stroke
425HP
316.92KW
Fuel: Gas/Petrol
Hours: 550
Year: 2019

Engine 2

Yamaha
Outboard 4 Stroke
425HP
316.92KW
Fuel: Gas/Petrol
Hours: 550
Year: 2019

Engine 3

Yamaha
Outboard 4 Stroke
425HP
316.92KW
Fuel: Gas/Petrol
Hours: 550
Year: 2019

Engine 4

Yamaha
Outboard 4 Stroke
425HP
316.92KW
Fuel: Gas/Petrol
Hours: 550
Year: 2019

Summary/Description

Video coming soon!

VIDEO coming soon! Original Owner, rigged with every factory option, PLUS nice upgrades. New ONAN generator with 53 hrs, Upgraded Garmin MFD's, CUSTOM Helm Enclosure, full tower, Refrigerated Fishbox, Release Battle Saddle, SeaKeeper6 with 219 sea hrs, , Heat/Air Conditioning for the Cabin and Helm, FLIR Camera, LED under water lighting, Stbd side dive door, Siren Security system, Aft Facing Mezzanine seating, Pull out Grill, SureShade electric cockpit shade, folding stern seat, DoveGray/White upholstery (all recently replaced), AWESOME forward seating with electric table/sunpad, Flip up Backrests, cup holders, USB Charging ports, Incredible Stereo, Cacin the stand-up shower, galley, BigScreen HDTV. You get the idea, this 41 Regulator has it all, including quad 425hp Yamaha XTO engines with 644 hrs and Transferrable YES Warranty until 6/4/2026. Helm Master joystick controls (both stations including SetPoint). Speed, Comfort, Top-Shelf Construction and Premium equipment, call to get more details.

Mechanical Disclaimer

Engine and generator hours are as of the date of the original listing and are a representation of what the listing broker is told by the owner and/or actual reading of the engine hour meters. The broker cannot guarantee the true hours. It is the responsibility of the purchaser and/or his agent to verify engine hours, warranties implied or otherwise and major overhauls as well as all other representations noted on the listing brochure.

Disclaimer

The company offers the details of this vessel in good faith but cannot guarantee or warrant the accuracy of this information nor warrant the condition of the vessel. A buyer should instruct his agents, or his surveyors, to investigate such details as the buyer desires validated. This vessel is offered subject to prior sale, price change or withdrawal without notice.

ADDITIONAL ITEMS TO NOTE

- Kingston Gray Hull Color with White Bottom Paint
- Vinyl Transom Wrap
- White motors
- Yamaha Engine Warranty until 06/04/2026
- Yamaha Helm Master joystick with SetPoint (both stations)
- Reverso Freshwater Engine Flush
- 2021 Cummins/Onan diesel powered generator (53 hrs of run time)
- Flexi-Teak option for Motor Bracket
- Dove Gray Upholstery option for all seats and back rests (all replaced 2021)
- White Upholstery for all coaming pads (all replaced 2021)
- Factory Tower with fiberglass Buggy Top, LED Lights
- VHF Antennas mounted to Buggy Top
- Garmin VHF Radios at both stations
- Custom Upholstery Covers for all seats and backrests
- Release teak "Battle Saddle" with factory cover, on Stainless No-Bolt pedestal
- FLIR Infra-Red Camera
- Refrigerated Transom Fishbox

- (2) transom livewells
- Taco Grand Slam (crank up) outrigger bases with 20' Carbon Fiber poles
- Stbd cockpit Dive Door
- Cockpit Sure Shade
- 3 sided tempered glass windshield with electric vent
- Custom 4 sided Helm enclosure with removable side doors and rear curtain
- Multi-Color LED overhead Lighting (hardtop and buggy Top)
- Electric Cockpit Grill Station, with Freshwater sink and Corian Surface
- SeaKeeper SK6 with 440 run hours and 219 Sea Hours
- Garmin 3x 17" 8617 MFD's (new 2021) with Radar/Plotter/b275 LHW CHIRP Transducer/Autopilot/Yamaha Data/FLIR input/AIS/Stereo controls all networked thru Garmin Backbone
- Polk Audio AM/FM/Bluetooth stereo, dynamically balanced with AMP and LED Speakers
- Folding Stern Seat
- Helm Heat/Air Conditioning Vents
- Dometic Heat/Air Conditioning inside of cabin
- Microwave oven
- Electric Stove (single burner)
- Stainless Steel sink with combination faucet
- Isotherm under counter, Stainless Refrigerator/Freezer
- Cherry dinette table, converts into sleeper with full cushion
- Jensen Flat-Screen HDTV with Jensen cabin stereo and DVD input
- Enclosed head with Shower, sink and electric toilet (fresh water flush)
- Front Console "Coffin Box" lounge with custom cover
- Removable forward seat cushions with storage beneath
- Forward SunShade (manual) with removable poles
- USB Charging ports and drink holders at forward seat space
- Electric Sunpad/Table with removable cushion
- Thru-Stem Electric Anchor Windlass with helm and forward control stations

















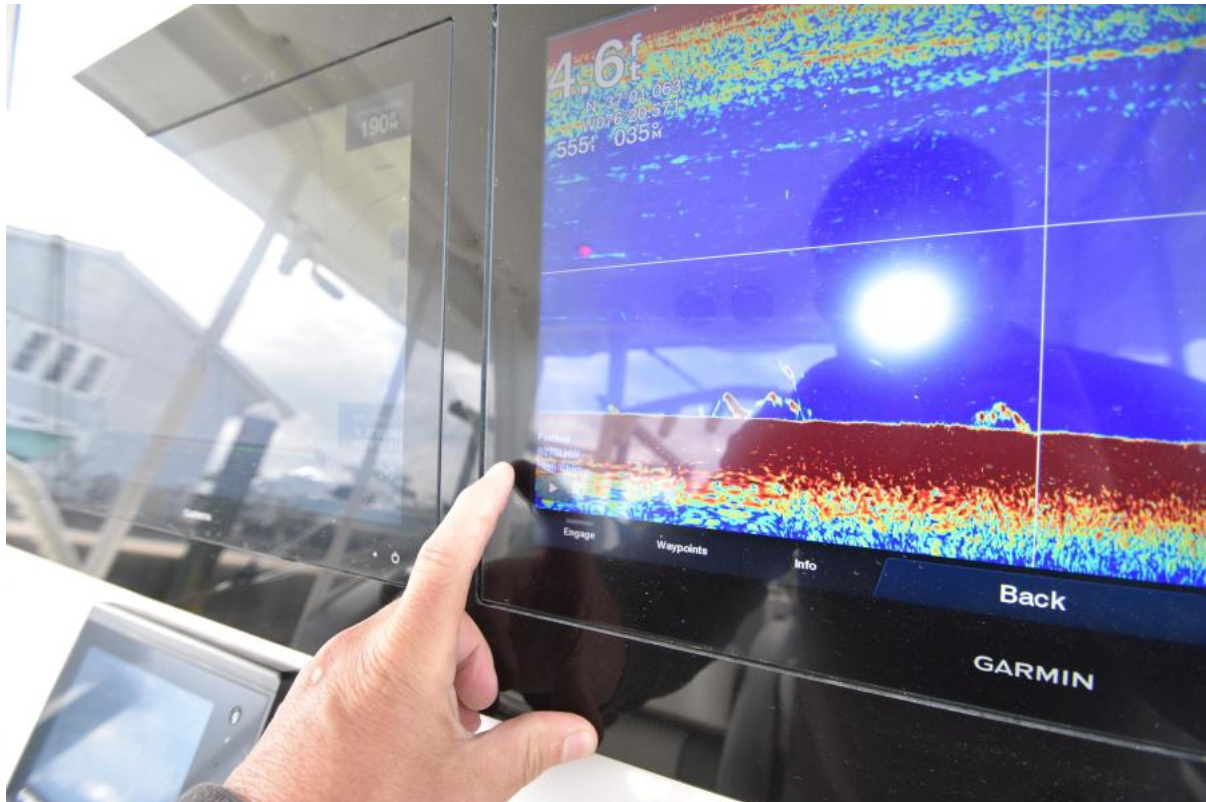








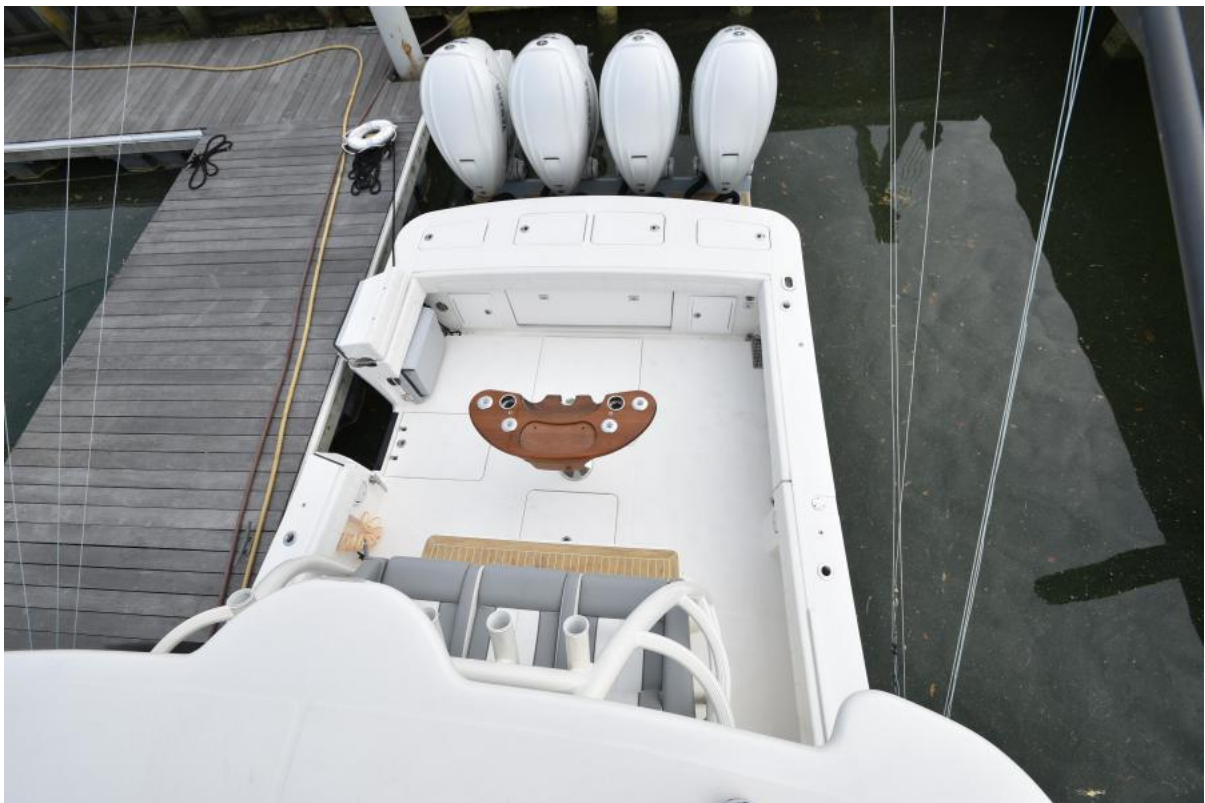




















**Regulator 37:
Triple Yamaha XF425**

RPM	MPH	GPH	MPG
1000	6.9	5.7	1.21
1500	9.3	8.2	1.14
2000	10.8	13.8	0.79
2500	12.2	22.7	0.54
3000	17.6	29.0	0.61
3500	27.0	35.9	0.75
4000	37.3	46.0	0.81
4500	43.2	56.1	0.77
5000	49.4	73.1	0.68
5500	55.0	90.6	0.61
6000	60.2	118.0	0.51

20 mph 5.64 sec

**Regulator 41:
Quad Yamaha XF425**

RPM	MPH	GPH	MPG
1000	7.2	7.8	0.93
1500	9.8	10.9	0.90
2000	11.8	17.0	0.69
2500	15.8	25.8	0.61
3000	25.9	33.3	0.78
3500	33.6	43.6	0.77
4000	40.0	57.9	0.69
4500	44.7	72.6	0.62
5000	50.7	94.7	0.54
5500	56.0	117.6	0.48
6100	63.7	144.6	0.44

0 - 30 mph 6.23 sec

PERFORMANCE DATA - XO SERIES

**Regulator 26XO:
Single Yamaha F300 XCA**

**Regulator 26XO:
Single Yamaha XF425**
RPM MPH GPH MPG

**Regulator 37:
Triple Yamaha XF425**

RPM	MPH	GPH	MPG
1000	6.9	5.7	1.21
1500	9.3	8.2	1.14
2000	10.8	13.8	0.79
2500	12.2	22.7	0.54
3000	17.6	29.0	0.61
3500	27.0	35.9	0.75
4000	37.3	46.0	0.81
4500	43.2	56.1	0.77
5000	49.4	73.1	0.68
5500	55.0	90.6	0.61
6000	60.2	118.0	0.51

20 mph 5.64 sec

**Regulator 41:
Quad Yamaha XF425**

RPM	MPH	GPH	MPG
1000	7.2	7.8	0.93
1500	9.8	10.9	0.90
2000	11.8	17.0	0.69
2500	15.8	25.8	0.61
3000	25.9	33.3	0.78
3500	33.6	43.6	0.77
4000	40.0	57.9	0.69
4500	44.7	72.6	0.62
5000	50.7	94.7	0.54
5500	56.0	117.6	0.48
6100	63.7	144.6	0.44

0 - 30 mph 6.23 sec

PERFORMANCE DATA - XO SERIES

Regulator 26XO:
Single Yamaha F300 XCA

Regulator 26XO:
Single Yamaha XF425
RPM MPH GPH MPG