



# Reel Estate

74' (22.56m) 2005 Viking Convertible  
Boca Raton Florida United States



## OVERVIEW

Manufacturer:	Viking	Hull Material:	Fiberglass
Engines:	2 MTU	Cruise Speed:	25 Knots
Engine Model:	16V2000	Max Speed:	37 Knots
Engine HP:	2000	Cabins/Heads:	4 / 5
Beam:	19' 9"	Fuel Type:	Diesel
Max Draft:	5' 7"	Fuel:	3000 G (11356.23 L)
Water:	385 G (1457.38 L)		

**\$1,495,000**



Chris Vacchio cvacchio@hmy.com

1-772-263-0547



## Data Sheet

Category: Sport Fishing  
Condition: Used  
Model Year: 2005  
Beam: 19'9" (6.02m)  
Max Draft: 5' 7" (1.70m)  
LOA: 74' (22.56m)  
Cabins: 4  
Heads: 5

Maximum Speed: 37 Knots  
Cruise Speed: 25 Knots  
Fuel Type: Diesel  
Hull Material: Fiberglass

Dry Weight: 160000 lbs  
Fuel Tank: 3000 gal (11356.23 liters)  
Fresh Water: 385 gal (1457.38 liters)

## Engines/Generators

### Engine 1

MTU  
16V2000  
Inboard  
2000HP  
1491.40KW  
Fuel: Diesel  
Hours: 7200

### Engine 2

MTU  
16V2000  
Inboard  
2000HP  
1491.40KW  
Fuel: Diesel  
Hours: 7200



## Summary/Description

In Reel Estate it's said location is everything and that core principle is embodied throughout the design of the Viking 74. Class leading range, comfort and style set this yacht apart from its tournament peers.

In Reel Estate it's said location is everything and that core principle is embodied throughout the design of the Viking 74. Class leading range, comfort and style set this yacht apart from its tournament peers. With a 3,000 gallon fuel capacity providing 500 plus mile range at 30 knots Reel Estate can take you there and back comfortably thanks to her Sea Keeper 26, fresh water maker and four stateroom layout with en-suite baths. Fish for days from the large cockpit outfitted with plush mezzanine seating, Murray Brothers fighting chair, overhead mist cooling system, built in electric grill, crushed ice machine and two live wells. You won't miss a bird or a tuna splash from Reel Estate's spacious open flybridge with Murray Brothers helm chairs or her striking tuna tower with full controls custom built by Palm Beach Towers. Reel Estate is powered by the reliable 2,000 HP M91 MTU power plants and her efficient Viking hull design with draft reducing prop pockets which provide for excellent range, reliability and accessibility into exotic shallow water ports of call. This sea proven battlewagon has it all with timeless style that still turns heads. This one owner/one captain vessel, with complete maintenance and oil sample records, has the following equipment and amenities.

## 2005 74 Viking, Reel Estate

### Salon

- Channel Plus runs DVD/VCR throughout
- Electric automatic salon door
- Upgraded L-shaped sofa with storage and arms
- Fluted teak valances
- Teak lambrequins
- Premiere edition carpet and fabrics
- Hidden A/C discharge
- Remote control panel for watermaker
- Dimmer for exterior quartz lights
- Main electrical panel up
- TV-55" Samsung pop-up with Blue Ray player, SAT TV
- High gloss teak finish
- Bottle storage in port cabinet
- Clear ice maker in port cabinet
- Custom headliner, baby ostrich
- Hunter Douglas silhouette window treatments
- Viking home theater upgrade
- Carpet runner, partial canvas
- Cocktail table with high low mechanism
- Teak trim where edges of carpet meet Amtico flooring
- Custom Amtico flooring at salon entrance (full width)
- (3) Bar stools at galley island counter (with 360 degree rotation)
- Storage cabinet between sofa and dinette seating upper drawer with cabinet below, 110 V outlet & telephone outlet by cabinet

### Galley/Dinette



- Black granite galley countertop
- Abundant storage in cabinets and drawers
- Etched and lighted glass above dinette by Chris Channel
- (4) Drawer Sub-Zero refrigerator
- (2) Drawer Sub-Zero freezer
- Amtico teak and holly flooring
- Garbage disposal
- Dimmers on overhead lights
- High gloss teak finish
- Oversized dinette table with complete horseshoe seating area
- Roll-out trash can storage in inboard-most cabinet of galley counter
- Galley faucet: Chrome
- Galley sink: stainless steel undermount (2 compartment)
- 110V outlet inboard side of galley just below granite
- Cabinet at end of galley island
- (4) Burner surface mount range
- White microwave/convection oven
- 110V outlet underside of upper galley cabinet

### **Master Stateroom**

- King bed with headboard, drawers below and storage under lift top
- Dimmer on lights
- Overhead hatch with blackout and screen
- Large hanging locker
- Custom carpet, wallpaper and fabrics
- 32" Sharp TV with Blu-ray player
- Telephone outlet
- Abundant storage drawers
- Orthopedic mattress (king)
- Entry credenza - five drawer
- Custom vanity/desk, electric outlet and telephone outlet
- Couch
- (3) Overhead lights above vanity/sofa

### **Master Stateroom Head**

- Custom wallpaper
- Exhaust fan
- Storage closet
- One-piece custom frameless shower door with gold hardware
- Mirror around upper vanity insert with wood frame, gold shower fixtures
- Granite flooring
- Black absolute granite vanity countertop
- Gold faucet (single lever)
- Magnum Opus commode in white
- Sink is white Kohler Caxton undermount

### **Forward Guest Stateroom**

- Island queen berth with storage drawers and storage under lift top



- Orthopedic mattress
- Overhead hatch with blackout shade and screen
- Ample storage cabinets
- Custom wallpaper
- Custom carpet and fabrics
- Dimmers for overhead lights
- Reading lights
- Large hanging locker
- 26" Sharp flat screen TV with Blu-ray player
- Granite flooring

### **Companionway**

- Teak handrail
- Storage locker
- Washer and dryer at forward companionway
- Central vacuum system
- Large storage closet with shelves
- Pantry/storage locker with shelves
- Wrapped hatch carpet installation canvas carpet runner with step covers
- Dimmers on overhead low-voltage lights

### **Day Head**

- Granite counter top
- Custom wallpaper
- Amtico teak and holly flooring
- Sink: Kohler Caxton undermount commode: white
- Mirror around upper vanity insert
- Gold faucet, standard
- Gold towel bars and rings

### **Electronics - Helm**

- Moritz monitoring system
- DDC/MTU electronic displays
- (2) ICOM M602 VHF's
- Ritchie compass
- KVH TracVision HD7 SAT TV
- Flir M-324 thermal camera
- Furuno NavNet 3D black box processor
- Furuno NavNet WAAS/GPS antenna
- Furuno 12KW digital radar with 9" TZ T9 controller
- Furuno 6' open array radar
- Furuno ethernet hub
- Garmin autopilot
- Furuno FA50 AIS
- (3) Garmin GPS MAP 8622 with remote controller
- Garmin GXM 51 satellite receiver
- ACR spotlight
- Fusion stereo remote control



- (2) Poly planner remote VHF speaker

## **Electronics - Above Helm**

- Furuno RD30
- Garmin GPS MAP 5208
- Furuno auto pilot controller

## **Engine Room**

- New overhead lighting
- Engine series 2000 V16 M91 port hours 7217/starboard hours 7229
- Generators (2) Onan E-QD series at 27.5 KW output – port hours 5558.6/starboard hours 5509.5
- Shelves over generators
- Watermaker 1500 GPD by Bluewater – New 2014, serviced 2021
- Atlas power transformers with balanced load 2021
- All pumps painted white except fresh water pump
- Awlgrip painted brass thru-hulls, sea strainers
- Delta T air make-up system
- Fire suppression system
- Engine room awlgrip painted chilled water A/C system with two pick up pumps
- 110V & 24V lighting
- Oil change line to cockpit box
- Dual Racor fuel filters
- (2) Generator gas/water separators
- Hot water heater
- 110V & 12V lighting
- Engine start/stop switches
- Engine gauges at entrance
- Oil change system
- Fuel transfer system
- 24V Fuel priming pumps
- Headhunter freshwater pump
- Access door to crew quarters
- Clean acrylic shaft log access covers

## **Flybridge**

- (3) Sided eisenglass enclosure
- Dedicated house batteries
- Fiberglass hardtop with molded in quartz lights (Palm Beach Towers)
- Radar mast
- Bomar hatch/overhead forward of bench seat
- (3) Sided EZ2CY with (3) forward air vents
- Rupp Big Riggs 43' outriggers
- (10) Rod rocket launchers
- Teaser reel
- (3) Murray Brothers ladder back helm chairs with teak footrests (adjustable)
- Port and starboard forward seating with storage below
- Overhead handrail (starboard)
- Stereo speakers





- Center helm arrangement
- Lewmar hydraulic bow thruster controls
- DDEC back up controls system
- Electronic single lever controls for helm pod
- Power assist steering recessed electronics boxes
- Push knob catches for electronics boxes
- Remote spotlight 24V
- Fresh water outlet in bridge (forward eye-brow)
- Bridge without exposed fasteners
- Custom white piping on all flybridge cushions, helm chairs, and jump seats
- Removable flybridge jump seat backrest (2) with white piping
- Drip dry foam for flybridge cushions
- Storage freezer
- Gas stainless steel springs on flybridge sink/drink box
- Helm chairs with white piping and teak ladder back
- Release teak helm pod
- Grab rail at console pass-thru on starboard side
- Larger access hatch to flybridge on port side
- Larger access hatch to flybridge on port side
- Cold box cooler forward
- Sink and hose outlet forward

## Cockpit

- Mezzanine seating with Sunbrella fabric and arm rests with drink holders
- Electronic grill in port cabinet with storage below
- Fighting chair, large Murray Brothers, offset, storage drawer, rod holders
- Teak sole and mezzanine sole
- Y-Valve for fresh/saltwater
- Oil change line from engine room
- Transom swim steps
- Eskimo ice machine
- Canvas cockpit overhang
- Tee in dockside water manifold to fill water tank
- Rod holders (4) on cockpit gunnels
- (2) Glendinning cable masters
- Yellow shore cords for Glendinning's
- Custom cockpit drop curtain with poles to make cockpit awning
- (2) Rod holders in each haunch – total of (4)
- (3) 12V outlets under coaming (2 starboard & 1 port)
- Gaff storage on starboard electrical inlet box
- (2) Refrigerated cockpit step boxes with new compressors – 2022
- Stainless steel gas springs for fish box
- Stainless steel gas sprints for port and starboard boxes in cockpit
- Cockpit speakers
- Fish box macerator
- Armstrong swim ladder

## Hull/Deck/Exterior

- Additional fuel tank (total of 3)



- Prop pockets to reduce draft
- Fiberglass side thru hulls
- Recessed trim tab covers
- Hydraulic bow thruster
- Under mounted flybridge side handrails (brushed aluminum) that wrap around 18" port and starboard
- Awlgrip forward bridge
- Awlgrip painted rub rail matches gelcoat
- Awlgrip lazarette, all bilges and anchor locker
- Fresh water in anchor locker
- Bow pulpit with extended rail
- (4) Underwater lights, (2) Aft and (2) down
- Oval exhaust outlets
- Sealand Magnum Opus heads
- Bottom Paint - Blue - March 2023
- Boot stripe - blue
- Hull color - blue, hull paint job November 2021
- Custom line -chain combination 600' line with 25' chain
- Hydraulic windlass
- Brushed aluminum for bow rail, flybridge ladder, mezzanine rail and extended flybridge rails
- Hull paint job - November 2021
- New underwater lights

### **Exclusions**

- Owners personal possessions

### **Additional Details**

Known as a leader in the sport fishing segment, Viking Yachts has built an outstanding vessel year after year. This one owner/one captain 2005 Viking 74' convertible is a perfect example of Viking Yachts and their excellent builds. The 74' Viking convertible was one of Viking's most popular models, displaying graceful lines that have paved the way for the Viking convertibles in this class.

Reel Estate is a 74' open flybridge with a custom hardtop and 12' tuna tower crafted by Palm Beach Towers. Reel Estate is equipped with large outriggers. The flybridge on this 74' Viking boasts a large area for entertaining with three Murray Brothers helm chairs and bench seating, allowing twelve people to comfortably reside on the bridge.

This Viking 74' was built to entertain people and to fish and cruise for extended periods with 3,000 gallons of fuel and the efficient 2028 MHP series 2000 M91 V-16 diesels. The cockpit features a Murray fighting chair, mezzanine, teak sole, (2) live wells, one transom mounted saltwater pump for tuna tubes, grill and Eskimo Ice maker.

Entertaining in the flybridge and down in the cockpit while at troll has never been easier with a boat like Reel Estate. Her grill in the cockpit allows for easy access to grilling up a mid-day snack while fishing and lounging on the mezzanine with friends and family.





The salon on board is massive, with an open layout that offers a custom oversized dinette and table for additional seating and entertaining. The salon also boasts etched glass in the dinette area, granite galley and galley island surfaces, (3) bar stools with teak back rests and vinyl covering, and a day head just forward of the galley.

If you are looking for a magnificent master stateroom, you are in luck! The exceptional stateroom is  $\frac{3}{4}$  beam with a king bed and all the great Viking amenities. The forward guest stateroom has a queen centerline bed, and the port guest stateroom has large upper/lower berths. All three of these staterooms have their own en-suite heads. All staterooms are accessed from the starboard companionway that has two large storage closets and a custom triple sectioned etched glass treatment by Chris Channel.

The crew stateroom also has its own head, upper/lower bunks and a direct access door to the immaculate engine room.

Reel Estate has received continuous upgrades starting with a Sea Keeper 26, hull paint job in November 2021, as well as an upgraded electronics package, Atlas shore power systems, compressors and more.

If you are in the market for a 2005 74' Viking, Reel Estate is waiting for her next offshore adventure or evening sunset cruise.



Reel Estate Profile 2005 Viking 74 Convertible - Reel Estate



Salon 2005 Viking 74 Convertible - Reel Estate





Salon 2005 Viking 74 Convertible - Reel Estate



Salon 2005 Viking 74 Convertible - Reel Estate



Salon 2005 Viking 74 Convertible - Reel Estate



Galley 2005 Viking 74 Convertible - Reel Estate





Galley 2005 Viking 74 Convertible - Reel Estate



Galley 2005 Viking 74 Convertible - Reel Estate





Galley 2005 Viking 74 Convertible - Reel Estate



Dinette 2005 Viking 74 Convertible - Reel Estate



Master Stateroom 2005 Viking 74 Convertible - Reel Estate



Master Stateroom 2005 Viking 74 Convertible - Reel Estate





Master Stateroom 2005 Viking 74 Convertible - Reel Estate



Master Stateroom 2005 Viking 74 Convertible - Reel Estate





Master Stateroom 2005 Viking 74 Convertible - Reel Estate



Master Stateroom 2005 Viking 74 Convertible - Reel Estate



Head 2005 Viking 74 Convertible - Reel Estate



Head 2005 Viking 74 Convertible - Reel Estate





Forward Stateroom 2005 Viking 74 Convertible - Reel Estate



Forward Stateroom 2005 Viking 74 Convertible - Reel Estate



Forward Stateroom 2005 Viking 74 Convertible - Reel Estate



Head 2005 Viking 74 Convertible - Reel Estate



Head 2005 Viking 74 Convertible - Reel Estate





Guest Stateroom 2005 Viking 74 Convertible - Reel Estate



Guest Stateroom 2005 Viking 74 Convertible - Reel Estate



Guest Stateroom 2005 Viking 74 Convertible - Reel Estate





Head 2005 Viking 74 Convertible - Reel Estate



Head 2005 Viking 74 Convertible - Reel Estate



Crew Quarters 2005 Viking 74 Convertible - Reel Estate



Crew Quarters 2005 Viking 74 Convertible - Reel Estate



Crew Head 2005 Viking 74 Convertible - Reel Estate



Crew Head 2005 Viking 74 Convertible - Reel Estate





Flybridge 2005 Viking 74 Convertible - Reel Estate



Flybridge 2005 Viking 74 Convertible - Reel Estate



Flybridge 2005 Viking 74 Convertible - Reel Estate



Flybridge 2005 Viking 74 Convertible - Reel Estate





Flybridge 2005 Viking 74 Convertible - Reel Estate



Flybridge 2005 Viking 74 Convertible - Reel Estate



Flybridge 2005 Viking 74 Convertible - Reel Estate



Flybridge 2005 Viking 74 Convertible - Reel Estate





Flybridge 2005 Viking 74 Convertible - Reel Estate



Flybridge 2005 Viking 74 Convertible - Reel Estate



Flybridge 2005 Viking 74 Convertible - Reel Estate



Flybridge 2005 Viking 74 Convertible - Reel Estate





Flybridge 2005 Viking 74 Convertible - Reel Estate



Flybridge 2005 Viking 74 Convertible - Reel Estate





Cockpit 2005 Viking 74 Convertible - Reel Estate



Cockpit 2005 Viking 74 Convertible - Reel Estate





Cockpit 2005 Viking 74 Convertible - Reel Estate

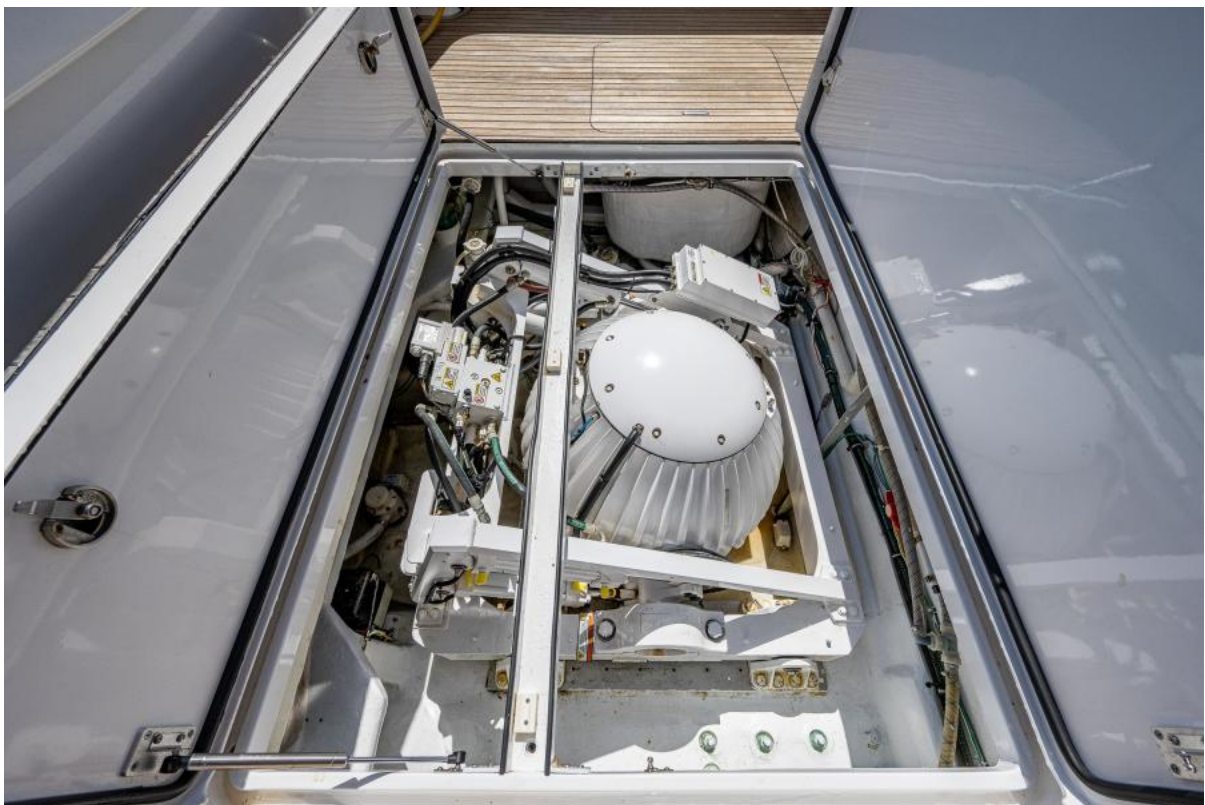


Cockpit 2005 Viking 74 Convertible - Reel Estate





Cockpit 2005 Viking 74 Convertible - Reel Estate



Cockpit 2005 Viking 74 Convertible - Reel Estate





Cockpit 2005 Viking 74 Convertible - Reel Estate

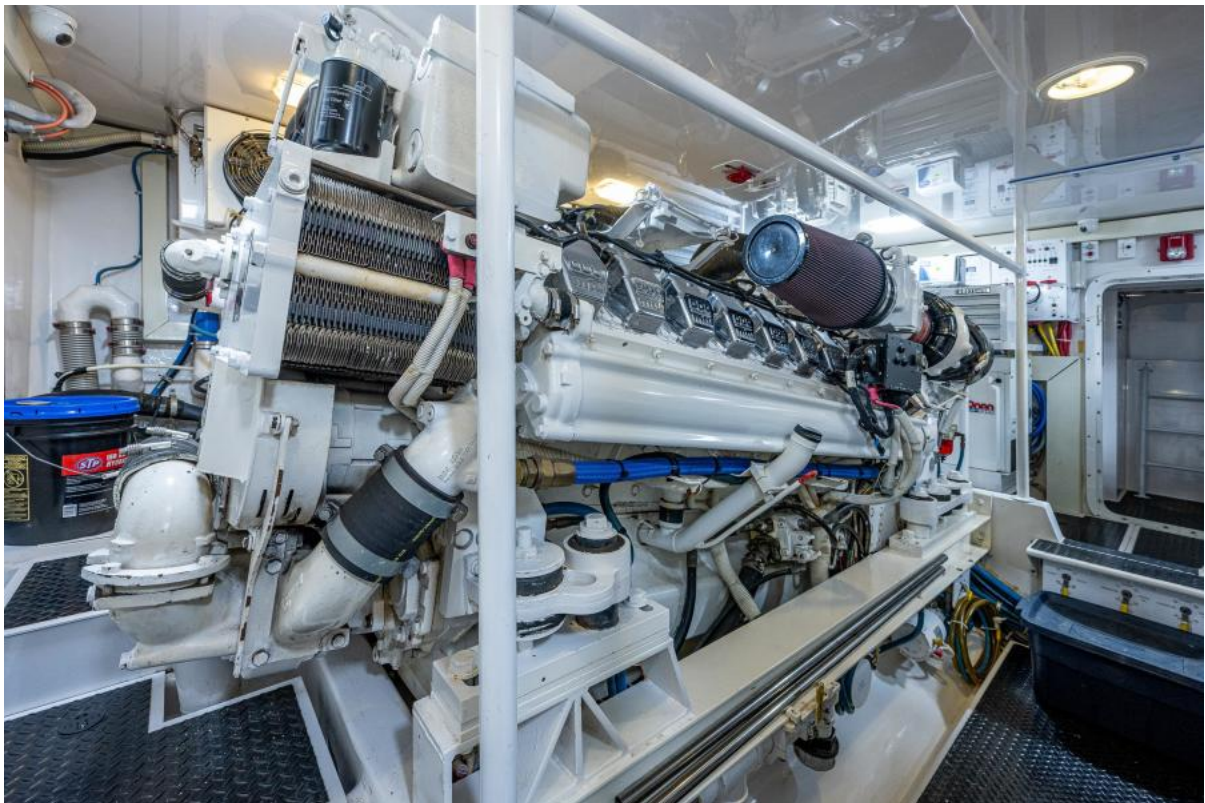


Tower 2005 Viking 74 Convertible - Reel Estate



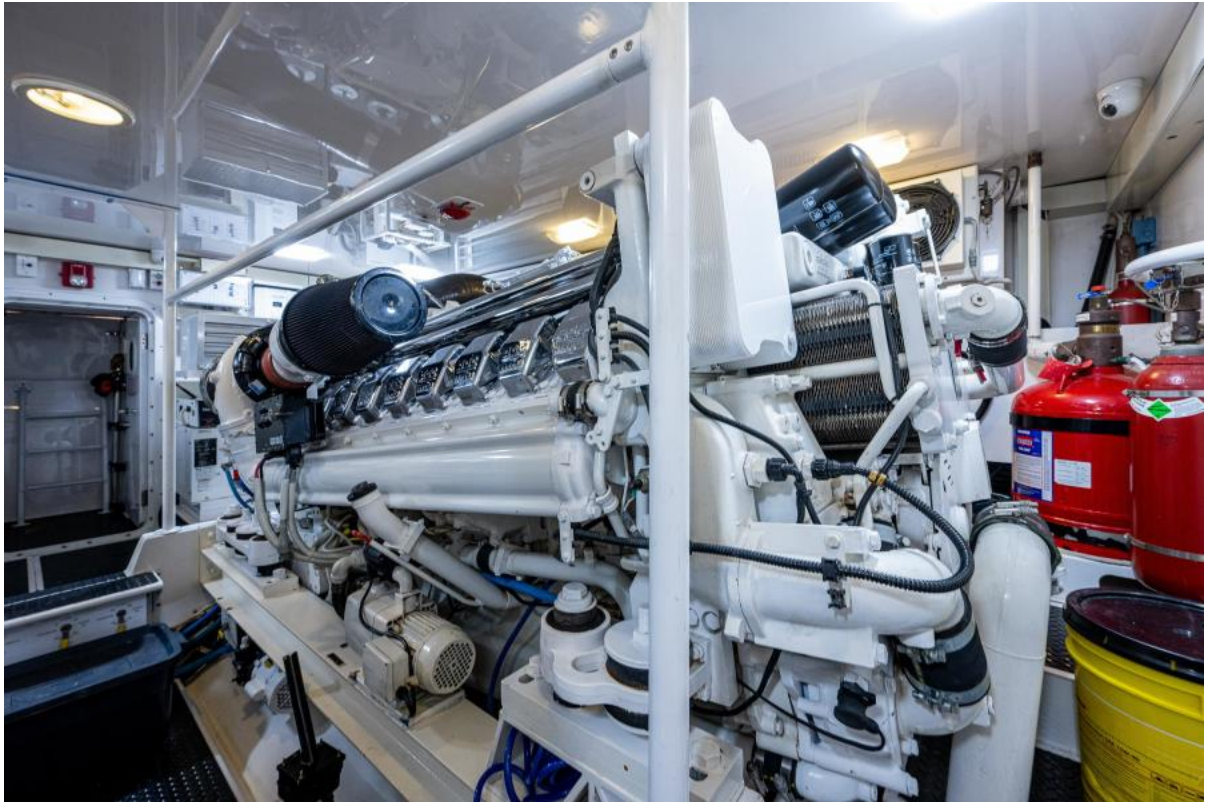


Engine Room 2005 Viking 74 Convertible - Reel Estate



Engine Room 2005 Viking 74 Convertible - Reel Estate





Engine Room 2005 Viking 74 Convertible - Reel Estate



Engine Room 2005 Viking 74 Convertible - Reel Estate





Engine Room 2005 Viking 74 Convertible - Reel Estate



Engine Room 2005 Viking 74 Convertible - Reel Estate





Engine Room 2005 Viking 74 Convertible - Reel Estate



Engine Room 2005 Viking 74 Convertible - Reel Estate





Engine Room 2005 Viking 74 Convertible - Reel Estate



Engine Room 2005 Viking 74 Convertible - Reel Estate