



PILOT LOUNGE Name Reserved



64' (19.51m) 2006 Hatteras 64 Ft Motoryacht
Jupiter Florida United States

OVERVIEW

Manufacturer:	Hatteras		
Engines:	2 MTU	Hull Material:	Fiberglass
Engine Model:	V10-2000 M93	Cruise Speed:	26 Knots
Engine HP:	1500	Max Speed:	30 Knots
Beam:	18' 3"	Cabins/Heads:	3 /
Max Draft:	4' 8"	Fuel Type:	Diesel
Water:	265 G (1003.13 L)	Fuel:	1515 G (5734.9 L)

\$1,198,000



Data Sheet

Category: Motor Yachts
Condition: Used
Model Year: 2006
Beam: 18'3" (5.56m)
Max Draft: 4' 8" (1.42m)
LOA: 64' (19.51m)
Cabins: 3
Sleeps: 6

Maximum Speed: 30 Knots
Cruise Speed: 26 Knots
Fuel Type: Diesel
Hull Material: Fiberglass
Hull Shape: Planing

Gross Tonnage: 70
Fuel Tank: 1515 gal (5734.9 liters)
Fresh Water: 265 gal (1003.13 liters)
Builder: Hatteras
HIN/IMO: HATGW609A606

Engines/Generators

Engine 1

MTU
V10-2000 M93
Inboard
1500HP
1118.55KW
Fuel: Diesel
Hours: 1575
Hours Date: 04-29-2024
Year: 2006
Location: Port

Engine 2

MTU
V10-2000 M93
Inboard
1500HP
1118.55KW
Fuel: Diesel
Hours: 1575
Hours Date: 04-29-2024
Year: 2006
Location: Starboard

Generator 1

Onan
21.50KW

Generator 2

Onan
21.50KW

Summary/Description

Motor Yacht PILOT LOUNGE is a 64' (19.51m) yacht for sale, built and launched by yacht builder Hatteras and delivered in 2006. This vessel sleeps up to 6 guests in 3 staterooms.

Overview

PILOT LOUNGE is a 2006 Hatteras 64 Motor Yacht built to a rare specification. 1,500 horsepower MTU 10V2000s were the more expensive option than the common Caterpillar offerings. These engines are noticeably quieter. ABT Trac fin stabilizers were installed in 2017 and navigation electronics were updated to Garmin units. This vessel is better equipped to tow a large tender than anything in her size range, thanks to solid build quality, 3.5:1 gears, and 8-blade propellers. The three-stateroom, three-head layout is perfect for family and friends, and the expansive living areas can accommodate many more. Add her draft of only 4'8" to the list, and you have a fantastic Bahamas boat. Run hull-down at 11 knots or get there quickly, cruising at 25 knots. Fuel capacity of over 1,500 gallons and a water maker enable long stays away from the dock.

Key Features

- Twin 1,500hp MTU 10V2000 engines
- 25kt cruise speed
- Twin 21.5kw Onan generators
- ABT Trac Stabilizers
- Bow and Stern Thrusters
- Yacht Controller System
- Water Maker
- Painted exterior finishes
- 3/3 layout
- Air-conditioned flybridge
- Current professional service of all systems
- Services up-to-date
- New bottom paint January 2024
- Recently updated carpet
- Recently updated exterior cushions
- Recently updated bedding

Salon

A large, sliding door leads from the aft deck to the light-filled Salon. Two barrel chairs flank a large TV on the port side and lie across the room from a large, curved sofa. These furnishings are surrounded by rich, high-gloss cherry joinery. The sliding door on the aft bulkhead has glass sections on both sides, providing a flowing view of the aft deck seating and the forward section of the Salon is open to the Galley. The forward wall has cabinetry containing glass storage, a wine cooler and refrigerator.

- Two club chairs
- Custom sofa with storage
- Carpeting
- Whisper Wall headliner
- Wine/beverage glass storage cabinet
- Fluted wood valances and Duette blinds
- Polished stainless steel three-panel door to aft deck
- Fixed frameless windows with tinted safety glass (rebedded on exterior August 2016)
- AC duplex outlets
- Throw pillows
- DC low-level lighting behind salon valances, port and starboard
- Steps to galley and pilothouse
- Finished high-gloss cherry wood bulkheads
- Entertainment center with a flat-screen TV, omnidirectional antenna, AM/FM surround sound receiver, DVD/CD player, and master distribution center
- Polk stereo speakers
- Main electrical distribution panel behind cabinet
- Telephone outlet
- AC disbursed through valances
- Smoke detector
- HVAC compartment controlled
- Custom teak and bird's eye maple cocktail table w/storage inside
- 42" flat screen TV
- Refrigerator

- Wine chiller
- A/V receiver, Yamaha RXV485
- Satellite TV

Galley

Up three steps from the Salon is the full-service galley. A U-shaped layout keeps everything within easy reach and offers a stable place for a cook while at sea. Sub-Zero refrigerator drawers are forward of the ceramic cooktop and convection microwave and Sub-Zero freezer drawers are across from the refrigerators and just forward of a large, stainless steel sink with disposal. A Fisher Paykel dishwasher drawer is aft. Granite counters and Amtico floors are functional and very attractive.

- High-gloss cherry cabinetry
- Amtico flooring
- Whisper Wall headliner
- Pantograph door to starboard deck with lock
- Full size conventional oven, Whirlpool
- Steps to lower companionway
- Upper-level cabinets inboard
- Storage locker
- Granite countertops with sink
- U-shaped lounge with storage underneath
- AC distribution panels
- AC four-burner ceramic cooktop KitchenAid
- Sub-zero under counter refrigerator and freezer drawers
- Microwave convection oven, Sharp Carousel
- Garbage disposal
- Storage drawers
- Water level gauge
- Smoke detector
- Dishwasher, Fisher/Paykel

Pilothouse

Forward of the Galley is the lower helm, anchored by a Pompanette captain's chair, which can be rotated to provide an additional seat to the dinette on the port side. This helm has excellent sight lines forward as well as views of the aft corners of this vessel. A full navigation suite compliments the rest of the controls and monitoring systems. To starboard is a pantograph door with watertight dogs, providing access to the side deck for short-handed operation.

- Amtico flooring
- Whisper Wall headliner
- High-gloss Cherry wood trimmed console with all necessary dimmable switches and instruments
- Hydraulic power assisted steering
- Compass with dimmable light
- Steps to flybridge
- Intermittent electric windshield wipers/washers with controls
- Windshield cover
- Integrated controls with emergency back-up and engine synchronization
- Electric fuel gauges
- AC distribution panel
- AC switching panel
- DC electronics panel
- AC duplex outlets
- Carbon monoxide detector
- Polk stereo system
- Electric defogger
- Smoke detector

Lower Companionway

Down stairs to starboard of the Helm is the Lower Companionway, containing a washer and dryer set, and access to the three staterooms, and three heads.

Owner's Stateroom

Large portlights allow natural light into the roomy Owner's Stateroom and the coffered ceiling gives a sense of height uncommon to a vessel this size. The king-sized bed is flanked by nightstands and lies on the centerline. Two hanging lockers and an abundance of drawers provide loads of storage for long trips and the en suite head features a walk-in shower.

- King berth with upholstered headboard
- Memory foam custom mattress with custom bedding and throw pillows
- Upholstered berth base with low level DC lighting
- Carpeting
- High-gloss cherry wood cabinets, bulkheads, and dressers
- A/C disbursed through decorative fluted valances
- Private access to head
- Full length mirror
- Carbon monoxide detector
- 20" LCD TV Sharp
- Portlight, port and starboard
- Twin cedar-lined lockers with automatic lights
- Nightstands with drawers
- Two dressers with drawers, port and starboard
- AM/FM audio access with local DVD/CD changer with one-touch master universal remote
- Boston Acoustics loudspeakers
- AC and DC light fixtures
- Telephone outlets
- HVAC controller

Owner's Stateroom Ensuite Head

- Amtico flooring
- Mirrored Ceiling
- Custom wall covering
- Solid surface countertop with backsplash, side splash and sink
- Baseboards
- Tile Shower
- Storage cabinet with mirror
- High-gloss cherry wood base cabinet with storage

- Towel bar
- Freshwater toilet, Headhunter
- AC air freshener blower
- AC duplex outlet
- AC vent
- DC low level lights under toe kicks

VIP Stateroom

The walk-around queen-sized berth is beneath a large deck hatch and surrounded by two hanging lockers, cabinets and drawers. The en suite head is on the starboard side, private to this room.

- Queen sized berth with memory foam mattress and custom bedding (new mattress May 2016)
- Carpeting
- Whisper Wall headliner
- Custom wall covering
- Mirrored forward bulkhead
- Rope storage locker with divider
- Screened overhead hatch with privacy door
- LED light fixtures
- AC dimmable lights
- AC duplex outlets
- DC low level lights under berth
- HVAC compartment controlled
- Private access to head
- High-gloss cherry cabinetry
- Upholstered berth base
- Full length mirror
- Nightstands, port and starboard
- Cedar-lined hanging locker with door and automatic light port and starboard
- Large cedar lined storage area below sleeping berth

- Audio system control, LCD keypad and Boston loudspeakers
- Overhead storage cabinets, port and starboard
- Carbon monoxide detector
- AC dispersed through fluted wood valances
- 20" LCD TV

VIP Stateroom Ensuite Head

- Amtico flooring
- Custom wall covering
- Mirrored Ceiling
- Solid surface countertop with sink, backsplash, side splash
- Stall shower with seat and sliding door
- Automatic sump pump
- Towel bar
- High-gloss cherry cabinetry with storage
- Storage cabinet with mirror
- Plexiglas mirror around upper cabinet
- Freshwater toilet
- AC air freshener blower
- LED light fixtures
- AC duplex outlet
- A/C vent
- DC low level lights under toe kicks

Port Guest Stateroom

A third stateroom with twin beds separated by a nightstand are on the port side. Private access to the third head is found on the forward bulkhead. That third head can also be accessed from the companionway for use as a day head.

- Memory foam side by side twin berths with storage under the outward berth
- Whisper Wall headliner
- Memory foam mattresses, custom bedding and throw pillows

- High-gloss cherry cabinetry
- AC disbursed through fluted valances
- Cedar-lined hanging locker with door and automatic light
- Carpeting
- Nightstand with drawers
- Fabric headboards
- Full length mirror
- NEW whisper wall in companionway
- Separate washer/dryer in companionway Whirlpool Thin Twin
- Aft bulkhead mirror
- Smoke detector
- Carbon monoxide detector
- LED dimmable lights (2016)
- AC and DC light fixtures
- AC duplex outlets
- HVAC compartment controlled
- 20" LCD TV
- Private entry to guest head

Guest Head

- Amtico flooring
- Custom wall covering
- Mirrored ceiling
- Solid surface countertop with sink, backsplash, side splash
- Stall shower with seat and sliding door
- Automatic sump pump
- Towel bar
- High-gloss cherry cabinetry with storage
- Storage cabinet with mirror

- Plexiglas mirror around upper cabinet
- Freshwater toilet
- AC air freshener blower
- LED light fixtures
- AC duplex outlet
- A/C vent
- DC low level lights under toe kicks
- Plexi glass mirrored ceiling
- Dual entry from companionway or guest stateroom

Aft Deck

A table and built-in seating anchor the spacious aft deck and access to the side decks are to port and starboard. The large, integrated swim platform is reached on the starboard side and contains the Glendinning Cable Master shore cord retractors. On the port side of the aft deck, a fold-down compartment houses a control station with gears, throttles and bow thruster controls.

- Fiberglass stairwell from aft deck to bridge with storage below
- Fiberglass access steps with gate to swim platform
- Fusion stereo with volume control
- Teak aft deck table
- Access hatch to utility and engine compartment
- AC duplex outlet
- AC lighting in hardtop
- Hardtop
- Stainless steel three panel doors to salon
- Molded bench seating with foam cushions and cover (reupholstered 2016)
- "Sea Grass" Floor Covering
- Mini drop out clutch and throttle wing controls, port side
- Welded stainless steel handrails to side decks
- Two deck chairs
- Weather covers for bench seating and table

Flybridge

The Flybridge is accessible via stairs adjacent to the Galley or stairs from the aft deck. This expansive area is covered by a fiberglass hard top and is enclosed with Strataglass on four sides. An air conditioner is contained in a built-in console on the starboard side, which also houses a sink and two Gaggenau electric grills. Full instrumentation and electronic navigation equipment are within easy reach of the centerline helm. To port and aft is a huge, L-shaped settee with a dining table. The boat deck is aft of the enclosure and has a 1100-pound davit.

- Molded fiberglass bridge
- 282 square foot flybridge including 100 sq foot boat deck
- Stainless steel grab rails
- Tinted acrylic windshield
- 4-sided Isinglass enclosure with roll-up cutouts throughout
- Control station with all necessary switches and dimmable lighted instruments
- Painted aluminum radar arch with masthead light and anchor light
- Compass with dimmable light
- Fusion stereo with volume control
- Refrigerator, storage, and molded countertop
- Electric grill, Gaggenau
- L-shaped lounge with polyfoam cushions, covers and storage below port with access to boat deck
- DC low-level lights
- Hinged door to pilothouse
- Stairs from pilothouse to bridge
- Single lever clutch and throttle controls with engine synchronization
- Hydraulic power-assisted steering
- Neutral interlock switches allowing engine to start in neutral only
- Flybridge air conditioning
- Two Pompanette Platinum Series helm chairs with covers, footrests, and cup holders
- Flybridge sink
- "Sea Grass" floor covering
- Custom pad for area forward of helm

- Table and two deck chairs located in L-seating area, port side
- Custom stainless railings added to aft bridge deck for increased safety (new 2017)
- Davit Tech 1100 low profile

Lazarette

In the center of the aft deck is a hatch leading to the lazarette, which is large enough to be used as optional crew quarters on some boats. This one has air conditioning and a fold-down berth, but it is mainly used for storage and equipment access. It is large enough to fit a top-load freezer and a ton of other gear. Currently, extra large fenders are stored in this compartment and there is still more than enough room for much more.

- Access through deck hatch in floor of aft deck
- Access to engine room
- Twin bunks
- Independent A/C unit with controls
- Large storage space

Engine Room & Mechanical Equipment

Through a door on the forward bulkhead of the lazarette is the spacious engine room. The generators are to port and starboard on the aft bulkhead and there is room to move around all sides of the big MTUs. UL approved fluorescent fixtures illuminate this entire room, which is painted with white polyurethane.

- Twin MTU 10V2000 M93 1500 hp Common Rail Engines with electrically controlled marine gears, neutral interlocks, exhaust silencers, engine hour meters, alternators, fuel filters and seawater strainers
- Engine hours: 1,575 (April 2024)
- Jefferson electric 15kw shore power isolation boost transformers
- Quick oil change system
- Watermakers Inc 750gpd watermaker
- 2 x Air conditioner pumps
- FM200 fixed fire extinguishing system for engine compartment with automatic and remote manual controls plus audible and visual discharge signals
- Fiberglass air intake system for engine room and engine combustion air with baffling and filters
- Polyethylene water lines
- AC compressed air system with line and regulator

- Dockside water inlet with pressure regulating valve and quick disconnect
- Pressurized 230V AC freshwater pump with central charcoal filter
- Fiberglass water tanks constructed with bronze fittings
- Sewage holding tank with 24V DC sewage pump
- Electric fuel priming pumps, 24V DC engines
- AC compressors and pumps
- Discharge sea chests
- 1" stainless steel steering tie bar with pivoting self-aligning ball joint connection
- Pick up sea chests
- Painted engine room and bilges with runner deck mat
- Water manifold with a centralized shut-off valve for sinks and showers
- Pultruded fiberglass rudder shelf with stainless steel tie bar
- AC fluorescent lights
- DC lights
- DC exhaust blower
- Freshwater fill hose for engines and generator
- 24V DC bilge and sump pumps
- Bronze chrome ball valve through-bolted in solid fiberglass on all underwater through-hull fittings, with electrical bonding throughout
- UL Marine listed fuel filter/water separator, generator
- Sealed shower sump, one each
- AC distribution panel
- DC distribution panel
- Digital monitoring for main engines in battery panel
- Start and stop switches and hour meters
- 2 x 21.5kw freshwater-cooled Onan generators with shock mounts, sound enclosure seawater strainer, remote start, fuel/water separator, hours meter and water lift muffler
- Generator water pump
- Electric fuel transfer system with filtration and dry tank protection for pump

Communication & Navigation Equipment

Pilothouse - Lower Station

- 2 x Garmin 7612 12" chartplotters
- Garmin HD open array radar
- Icom VHF radio
- Furuno RD30 multi-function display
- Simrad AP25 autopilot
- 2 x MTU electronic engine displays
- Hatteras Premium Ships monitoring system
- MTU single lever electronic controls
- ACR searchlight w/remote control
- American Bow Thruster control, hydraulic

Flybridge - Upper Helm

- 2 x Garmin 7616 16" chartplotters (2016)
- Garmin HD open array radar (2016)
- ICOM VHF radio ICM 604
- Furuno RD30 multi-function display
- Simrad AP25 autopilot
- 2 x MTU electronic engine displays
- Hatteras Premium Ships monitoring system
- MTU single lever electronic controls
- American Bow Thruster control, hydraulic
- Vetus Stern Thruster control, electric
- Yacht Controller remote docking control also included
- Lenco trim tab controls
- ACR searchlight control

Electrical Equipment

- 230v 30-gallon electric water heater
- Boat cable, tin-coated with insulation
- Gel/lead acid compatible 240v automatic programmable battery charger
- LED light fixtures
- Battery control panel with fuses and isolation switches
- DC electronics panels with magnetic circuit breakers
- Systems monitor with programmable logic controller read-out, visual and audible signals for exhaust temperature, alternator, battery voltage, high bilge water, fire warning in engine compartment, fire extinguisher discharge in engine room, AC power loss, smoke detectors, and holding tank 3/4 full monitor
- Telephone/CATV inlet
- Telephone and CATV shoreline cord
- TV omnidirectional antenna
- 2 x 24v heavy duty marine batteries mounted in fire retardant fiberglass boxes
- Automatic battery paralleling system with switch at control console
- Two 240v 50-amp transformer connected retractable shore cords with over current protection port sport deck
- AC distribution panels with magnetic circuit breakers
- AC switching panel with source selector switches, digital voltmeter, ammeter, frequency meters, generator start/stop controls, voltage boost tap switch and interlock, selector breakers
- Navigation lights
- Ground fault protection on AC receptacles and lighting circuits
- AC with reverse cycle heating with AC compressors individually controlled by SMX control in each compartment

Hull & Deck Features

- Stainless steel hardware
- Four polished stainless steel spring line cleats
- Bow and stern stainless cleats
- Stainless steel rails on bow
- Stainless steel trim tabs
- Deck plates for fuel and water fills and waste pump out
- Heavy duty bronze engine couplings
- Engine and generator exhaust exits through hull side near transom

- Fiberglass stringers
- Dual prop bow thruster
- Walk around side decks
- Black fenders - large inflatable TaylorMade
- Alloy 22 high-strength prop shafts
- Windlass 1700lb with 25' of stainless steel chain
- Zincs on rudder and shafts
- Dual air horns
- Fog bell
- Portable dry chem fire extinguisher
- Sunpad on bow deck
- Underwater lights in transom
- Handheld shower in cockpit
- Freshwater washdown on foredeck
- Sea ladder with storage brackets
- Sea stairs with storage brackets

Disclaimer

The company offers the details of this vessel in good faith but cannot guarantee or warrant the accuracy of this information nor warrant the condition of the vessel. A buyer should instruct his agents, or his surveyors, to investigate such details as the buyer desires validated. This vessel is offered subject to prior sale, price change or withdrawal without notice.



Salon



Salon



Salon



Salon



Galley



Galley and Dinette



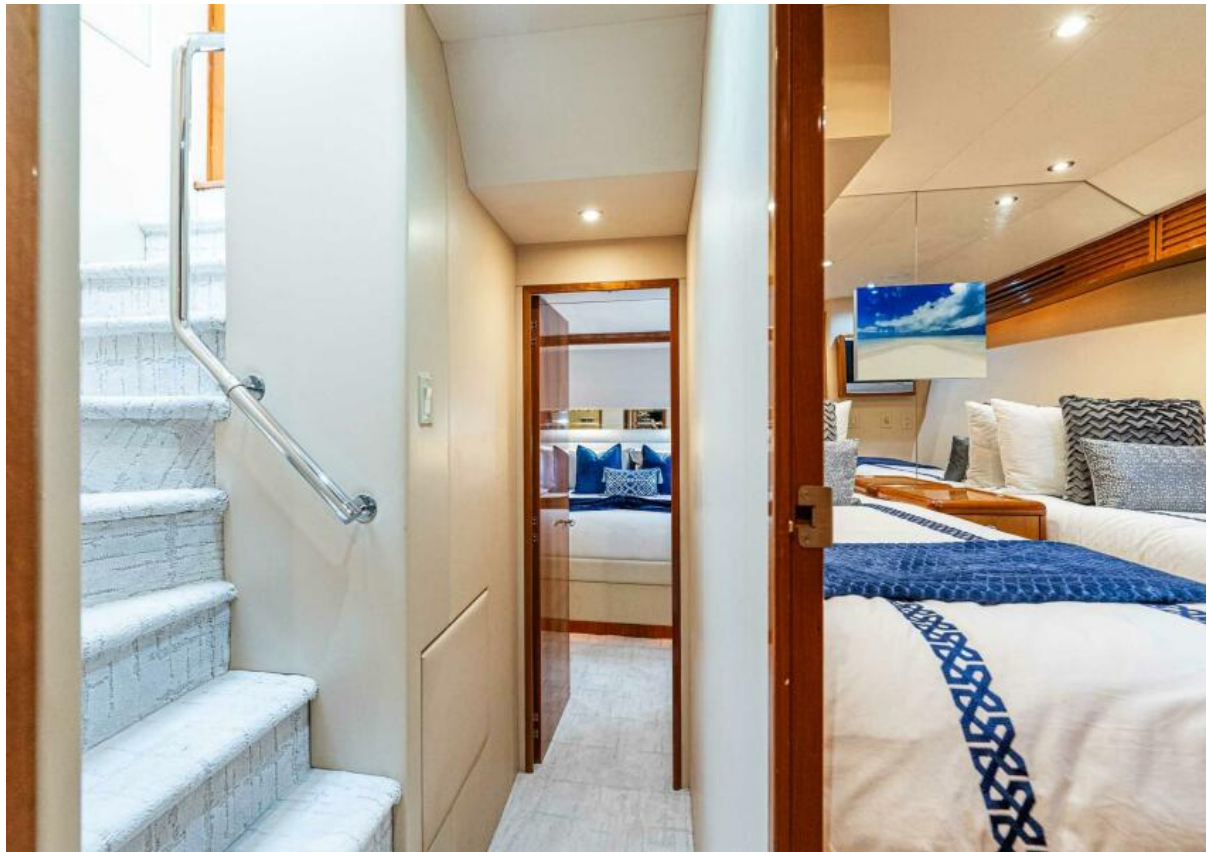
Lower Helm and Dinette



Lower Helm



Stabilizer Controls



Lower Companionway



Owner's Stateroom



Owner's Stateroom



Owner's Ensuite Head



VIP Stateroom



VIP Stateroom



VIP Ensuite Head



Guest Stateroom



Guest Head



Washer and Dryer



Aft Deck



Aft Deck



Flybridge Helm Station



Flybridge Helm Station



Flybridge



Flybridge



Flybridge



Engine Room



Engine Room



Starboard Generator



Watermaker



Freshwater System



Starboard Profile



Starboard Quarter



Stern



Starboard Bow



Aerial