



RHAPSODY

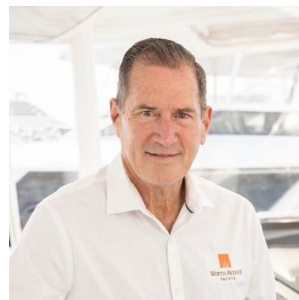
94' (28.65m) 2009 Paragon
Chesapeake Virginia United States



OVERVIEW

Manufacturer:	Paragon	Hull Material:	Composite
Engines:	2 Caterpillar	Cruise Speed:	14 Knots
Engine Model:	C-32	Max Speed:	20 Knots
Engine HP:	1550	Cabins/Heads:	3 /
Beam:	21' 7"	Fuel Type:	Diesel
Max Draft:	6' 4"	Fuel:	4000 G (15141.64 L)
Water:	750 G (2839.06 L)		

\$2,975,000



Data Sheet

Category: Motor Yachts
Condition: Used
Model Year: 2009
Refit Year: 2019
Beam: 21'7" (6.58m)
Max Draft: 6' 4" (1.93m)
LOA: 94' (28.65m)
Cabins: 3
Sleeps: 8

Maximum Speed: 20 Knots
Cruise Speed: 14 Knots
Fuel Type: Diesel
Hull Material: Composite
Hull Shape: Semi Displacement

Gross Tonnage: 150
Stabilizers: Standard
Stabilizer Brand: Wesmar
Fuel Tank: 4000 gal (15141.64 liters)
Fresh Water: 750 gal (2839.06 liters)
Builder: Paragon
HIN/IMO: PMY94006D109

Engines/Generators

Engine 1

Caterpillar
C-32
Inboard
1550HP
Fuel: Diesel

Engine 2

Caterpillar
C-32
Inboard
1550HP
Fuel: Diesel

Summary/Description

Motor yacht RHAPSODY is a 94ft / 28.65m luxury yacht for sale, built and launched by yacht builder West Bay Sonship Yachts. Delivered to a knowledgeable yacht owner in 2009 and refit 2019, this luxury yacht sleeps up to 8 guests in 3 staterooms.

*Not for sale to US residents while in US waters.

Motor Yacht RHAPSODY is a 94' (28.65m) yacht for sale, built and launched by yacht builder Paragon. Delivered to a knowledgeable yacht owner in 2009 and refit in 2019. This vessel sleeps up to 8 guests in 3 staterooms and has accommodations for 3 crew in 2 cabins.

Walkthrough

*Not available for sale to US residents while in US waters.

Walking into the salon through double automatic sliding doors is a spacious and comfortable sofa as well as an elegant armchair. To starboard side, are cabinets, built-in fireplace and a pop-up TV. At the forward end of the salon on the port side, is a desk/counter area with drawers and lots of storage space. Across from the desk/counter area is a wet bar with ice maker and wine storage along with a cabinet with Audio/Video components. Forward of the wet bar on the starboard side amid-ship, is a stairwell to the large full-beam private Owner's stateroom.

Moving forward to port, is a large and open chef-style galley with a Viking gas range, Sub-Zero refrigerator/freezer, dishwasher, pantry, high-low pop up appliance center, and a "Dutch" door accessing the covered walk-around decks (great for crew moving in and out without disturbing the salon area).

Forward of the galley is a formal dining area with seating for 6 guests and built-in storage cabinets. Between the galley and dining area is an automatic divide that separates the galley from the dining area on-demand. The area has direct access to the foredeck sun lounge seating thru sliding doors on both port and starboard sides. On the starboard side is a staircase leading to the skylounge and a separate stairway leading to the lower guest staterooms. At the landing of the forward stairway to the left (aft), is the full-beam VIP and to the right (forward) is the guest stateroom, both with private ensuite heads and stall showers.

The forward end of the enclosed skylounge houses a dash with a full array of electronics and seating with two Pompanette chairs. Directly aft to port and starboard are L-shaped settees with large wood finished tables. To the aft of the settees to starboard is a convenience galley with sink, fridge and microwave, and storage. To port is a storage cabinet and a 2-piece head.

The skylounge sliding door access the aft skylounge deck with teak decking, a “U” shaped settee with 2 tables and a barbeque/storage and sink area to port. There are stairs leading from this deck to the lower aft deck.

The aft section of the skylounge deck is equipped with a davit and dingy storage.

Main Salon

- Twin automatic Freeman sliding aft doors with fixed glass windows
- Extensive floor damping system to reduce noise/vibration
- Port aft stairway with access to engine room, utility room, captain’s quarters
- Carpeted sole with “Soundown” barrier padding
- Overhead LED lighting with dimmer control
- Stbd side custom cabinet for TV/Entertainment center, built-in electric fireplace, wine cooler, large icemaker, under-counter sink, bottle & glass storage
- Stbd forward private stairway down to master stateroom
- Air-conditioning system
- Separate work reading area with granite countertop, drawers and storage and bar-type stools

Day Head

- Starboard side window
- “Tecma” head
- Exhaust fan
- Overhead LED lights on dimmer
- 110v ac GFI protected duplex receptacle
- Accent lights at cabinet base & valance

Galley

- Granite counter tops
- Wood floating floor system - cherry
- Air conditioning system
- Mahogany wood w/ satin finish
- (2) Sub-zero full height refrigerator with two freezer drawers at bottom section

- Fisher Paykel double drawer dishwasher
- GE "Profile" trash compactor; GE microwave with exhaust fan
- Viking gas stove/oven with removable butcher block top
- Soap dispenser
- Instant hot water dispenser
- Insinkerator stainless garbage disposal with countertop air switch
- Port-side hinged Freeman Dutch door from galley to side deck

Dining Area

- Port & starboard side Freeman sliding doors with access to side decks
- Cherry sole
- Electric operated divider to separate dining and galley areas
- Storage cabinets for china and glasses for dining area
- Wood dining table with burl inlay with seating for 6 guests
- 10mm clear forward windshield glass with burl cabinet top
- Tinted tempered windows from side doors aft
- AC & DC electrical panels
- LED overhead lighting with dimmer control
- Feature medallion recessed ceiling with feature and rope lighting
- Starboard side stairways up to skylounge and to lower staterooms
- Stereo speakers in overhead w/ volume control

Owner Stateroom

- Accessed via private stairway from salon
- King-size walkaround berth with large drawers & storage underneath
- Nightstands with drawers
- Cedar-lined hanging & walk-in closet
- Sofa to starboard
- Combo washer/dryer to port
- Dresser cabinet, desk/vanity area to port

- (2) Wall-mounted reading lights
- Overhead LED lights on dimmer controls
- Entertainment system
- Air conditioning system

Owner Ensuite

- His and Her Heads
- Portlight on the port side
- “Tecma” full-size ceramic bowl head
- Grohe faucets
- Fully enclosed shower with Grohe controls
- 110v ac duplex receptacles (GFI type in head)
- Accent lighting (per plan)
- Hidden overhead exhaust fan

VIP Stateroom

- Queen walk-around with storage beneath – drawers and hinged access
- Portside settee that converts to a full-size berth
- Air conditioning system
- Cedar-lined hanging lockers
- Entertainment system
- Overhead LED lights on dimmer control
- (2) Wall-mounted reading lights
- (2) Opening Freeman port lights at stbd, and one to port

VIP Head

- Freeman port light
- Granite counter-top & cherry wood flooring
- Ceramic sink
- Full enclosed shower
- Louvered lockers

- “Tecma” head
- Grohe faucets and shower controls
- Accent lighting (per plan)
- 110v ac duplex receptacles (GFI type in head)
- Overhead exhaust fan in the head

Guest Stateroom

- Queen-size island berth with hinged access to storage underneath
- Air conditioning system
- Cedar-lined hanging lockers
- Overhead LED lights on dimmer control
- Port & starboard outboard storage lockers
- “Freeman” escape/ventilation hatch w/ “OceanAir” screens
- (2) Wall-mounted reading lights
- Entertainment System
- Built-in desk

Guest Head

- Port light
- Granite countertop and cherry wood flooring
- Ceramic sink
- Full enclosed shower
- Louvered lockers
- Grohe faucets and shower controls
- Accent lighting (per plan)

Crew Quarters

Captain's Quarters

- Queen-size berth
- Hanging locker
- Built-in desk

- Air conditioning system
- Entertainment system
- Head with shower accessed from either Captains' quarters and general crew area

Crew Area / Galley

- Countertop, built-in sink, microwave
- Drawers, storage cabinets
- Freezer
- TV
- Air conditioning system
- Fold-down berth with sliding doors to separate area from hallway

Enclosed Flybridge

- Center helm station with (2) "Pompanette" helm chairs, complete engine instrumentation & alarms, navigational electronic equipment, "Night Watch" ships systems monitoring computer
- Port & stbd wing command stations with engine controls, bow & stern thruster controls
- Air conditioning, heating, and defrosting systems
- Chart storage lockers
- Two "L" shaped settee with wood tables
- Aft sliding door with access to aft deck
- Carpeted sole
- 10mm clear fwd windshield glass
- Tinted tempered windows
- LED overhead lighting with dimmer control and rope lighting
- Overhead NAV lights (red)
- Stereo speakers in overhead w/volume control
- Aft of starboard settee convenience galley with sink, refrigerator, drawer microwave and drawers/storage
- Aft of port settee storage cabinet and enclosed head

Skylounge Aft Deck

- "U" shaped FRP seats with two FRP tables with storage under

- FRP Arch & Mast tower with (5) Cantalupi lights on dimmer controls FRP hardtop with lighting
- Portside Viking gas BBQ, sink, and lockers
- Accent lighting at base of all FRP cabinets and seating areas
- Aft port boat deck, integral steps down to aft deck with S.S. framed sliding hatch/ cover
- Teak decks, galley/dinette & fly-bridge sections
- 2200 lb Nautical Structures hydraulic davit with hydraulic rotation
- S.S. Handrails around boat deck
- Freshwater wash down & outboard engine flush hook up station
- Decks cambered & drains plumbed to insure no standing water

Aft Utility Area

- Accessed from swim platform or salon/main deck
- AC & DC breaker panels
- Night watch monitoring display
- Air conditioning system
- Stereo and speakers with volume controls
- Industrial hard rubber mat flooring (non-slip)
- Formica wall coverings
- Watertight "Freeman "door to swim deck
- Direct access from swim platform to engine room
- (2) Opening port lights, port side by extra crew berths, fold-down berth port side
- Polished stainless steel grab rails (per plan)
- Large counter-tops & spare parts storage lockers
- S.S. air compressor hook-up
- (3) 110v ac receptacles
- Crew amenities: TV, Corian or Formica countertops, S.S. sink with faucet, microwave, Subzero under-counter refrigerator & Sub-zero under counter freezer, lockers for dishes and miscellaneous
- Full-size GE washer/dryer (stacked)
- Storage and counter area

- Overhead LED lighting

Main Deck

- All exterior stainless steel # 316 grade with welds ground smooth and highly polished
- Seating area at bow with removable table and filler piece for transition into large sun pad lounge
- Large storage lockers port & starboard at bow area
- Central fuel tank fills port & starboard
- Cambered decks w/ outboard drain channels
- Watertight forward deck hatch, access to anchor well ("Freeman Hatch")
- Forward deck hatch & ventilation/escape hatch for forward guest stateroom
- "Freeman Hatch" Freshwater and saltwater washdown hook up at bow area
- Fire hose at forward starboard bow locker with 15' hose & fire hose nozzle
- Built-in, high-pressure anchor chain wash system (freshwater)
- High polished S.S. handrails
- 250 lb. S.S. polished plow type anchor, 400'x 5/8" high test chain "Nautical Structures" 2200 lb.
- S.S. Hawse holes and bollards Port & starboard bulwark doors
- Overhead Cantalupi lights on dimmer controls for walk-arounds
- "Underwater lights" at walkarounds on forward main deck
- Cantalupi deck safety lights
- "Marquipt" boarding ladder - access at port and starboard mid-side deck
- Teak for all main decks
- Warping winches - port & starboard
- Portside integral stairway up to boat deck/fly-bridge (teak steps)
- FRP starboard side storage cabinet with refrigerator
- FRP molded bench seat with large dining tables
- Portside locker with engine controls/thrusters, autopilot joystick in lieu of steering wheel
- Overhead LED lights on dimmer control
- Overhead stereo speakers
- VHF radio station cabinet PBX phone system hook up

- Aft facing hailer horn location
- Floodlights facing aft
- Fire hose at port side w/ 15' hose & fire hose nozzle
- Swim Platform
- Teak decking with stairway port & starboard, up to aft deck (teak steps)
- Hydraulic stow away swim ladder inside swim platform
- Hands-free hot/cold water shower
- (3) Extra-large pop-up cleats, port center & starboard
- Watertight "Freeman" door, access to utility/crew & engine room
- S.S. rails on stairs up to aft deck
- Water-proof safety lights on stairs up to aft deck
- Salt-water hook up
- (4) "Underwater" floodlights, on transom underwater
- (4) S.S. "U" rails around swim platform
- Maxwell liberty 2500 stern windlass 2500, 250' rode and 75' chain
- Freshwater shower on swim platform
- Salt-water wash down at bow and stern

Swim Platform

- Teak decking with stairway port & starboard, up to aft deck (teak steps)
- Hydraulic stow away swim ladder inside swim platform
- Hands-free hot/cold water shower
- (3) Extra-large pop-up cleats, port center & starboard
- Watertight "Freeman" door, access to utility/crew & engine room
- S.S. rails on stairs up to aft deck
- Water-proof safety lights on stairs up to aft deck
- Salt-water hook up
- (4) "Underwater" flood lights, on transom underwater
- (4) S.S. "U" rails around swim platform

- Maxwell liberty 2500 stern windlass 2500, 250' rode and 75' chain
- Fresh water shower on swim platform
- Salt-water wash down at bow and stern

Lazarette

- Storage lockers port and starboard for parts and equipment
- Hanging locker
- Watermaker, aft anchor windlass
- (2) Aft fuel tanks and clean outs
- Freeman door to swim platform

Engine Room and Bilges

- 12,000 BTU air conditioning system in engine room
- Engine room camera system
- S.S. welded & polished engine beds
- Aluminum (marine grade 6mm) fuel tanks with proper sight gauges, and accessible 20" inspection plates
- Two sea chests for specific raw water intakes
- (6) 24 VDC heavy duty bilge pumps w/ ultra-switches High bilge water alarm system
- Full flow S.S. ball valves for all piping systems
- S.S. air compressor hook up with hose
- 125 Vac oil change system for main engines and generators
- 60 Gallon per minute emergency bilge pump system for each bilge
- Fire hose pump system with hose at forward deck and aft deck
- Freshwater anchor wash down system at bow anchor area
- Freshwater hose and nozzle in engine room
- Delta "T" positive pressure engine room air intake system to minimize water ingestion w/fire flaps and demisters
- (1) 30 gallon and (1) 40 gallon hot water heater
- Central freshwater tank fills, port & starboard
- Dock side water pressure hook up at bow & stern w/quick release fittings
- 125 Vac Headhunter fresh water system pumps (2) with filters

- Central drain system for upper and lower deck drains, sinks, etc. to minimize thru hull fittings
- 500 gallon holding tank with deck fitting for pump out and two macerator pumps for overboard discharge (1) 110 vac pump & (1) 24 vdc
- 110 Vac florescent lighting in engine room and utility room
- Marine grade bronze sea cocks for all thru hull fittings, bonded to bonding system
- “Whale” high output manual bilge pump
- Stereo speakers w/volume controls
- Compressed air system for Buelle air horns with engine room air hose

Main Machinery

- Twin Caterpillar C-32 1550 BHP diesel engines with remote ZF #2050A electronic marine reduction gears using a torsional coupling and vibration dampening system
- Engine Hours: Port 2078; Starboard 2076 (Jan 2020)
- Engines mounted on “rubber design” soft vibration dampening mounts, engine installation shall be approved by the engine manufacturer, during installation and at sea trials. American built #316 stainless steel exhaust risers with S.S flex bellows connecting to custom spray nozzles and FRP towers with internal silencers & underwater exhaust
- Main engines driven to run the following: 60 hp 16” dual prop vortex bow and stern thrusters, 16 sq ft. Roll- fin stabilizers
- Aquamet #22 or equivalent (3-1/2”) propeller shafts in conjunction with “rubber design” flex couplings at gear to shaft couplings
- Water cooled exhaust system with 6” bypass tubes aft with additional silencers for bypass exhaust
- Power train & exhaust systems have been designed for smoothest and most quiet results possible
- Dual Racor 75/1000 fuel filters/water separators with vacuum gauges for each engine
- R.C.I. fuel purifiers (RCM 800) for each engine installed in-line before
- Racors Bronze “V” struts with cutlass bearings
- “Tides” dripless propeller and rudder shafts
- Glendenning: 2003 Model electronic engine controls at skylounge helm, port & starboard bridge command stations; including remote control for aft deck
- Dual hydraulic power assisted steering system
- Two 4” dia. posts S.S. foil section, streamlined rudders
- Engine room start/stop panels with engine instrument gauges
- Visual and audio alarms for engine systems at pilothouse

- Aqua air, 15-ton chilled water air conditioning and heating system with surge-less startup
- Central vacuum system
- HRO systems reverse osmosis watermaker (1400 g.p.d.) with freshwater flush system
- Automatic fire extinguishing system with automatic engine shut down “Tecma” marine heads throughout
- Hydraulic system by Wesmar

Communication and Navigation Systems

Skylounge Electronics

- Navnet 3D
- (4) Furuno 17” Monitors
- Furuno dual 12kw Navnet Radars
- 6 ft open array Furuno dual WASS GPS
- Furuno digital fishfinder/sounder
- Furuno F150 instruments
- Icom VHF radio w/command mic & remote
- Comrod Antennas
- Simrad autopilot w/ handheld remote backup
- Nauticomp PC computer
- WXWorx XM satellite weather
- Skymate Senrtymate system
- Panasonic PABX intercom phone system
- Elbex CCTV Cameras
- Monitor for all onboard cameras –Foredeck looking forward, (1) on each side deck, aft deck looking aft, arch looking aft, engine room fore and aft
- FLIR Camera
- ACR Spotlight controls

Crew Quarters Electronics

- Furuno F150 NAV repeater
- Icom VHF radio

- Furuno Navnet data displayed on LCD TV for monitoring
- CCTV displayed on TV for monitoring

Electrical Systems

- Northern Lights 30kw diesel generator with exhaust silencers, sound shield & custom gas/water separators - 2940 hours (Jan 2020)
- Northern Lights 20kw diesel generator with exhaust silencers, sound shield & custom gas/water separators - 1949 hours (Jan 2020)
- (4) "Odyssey" pc 1700 dry-cell batteries for main engine start (2 ea. engine) 2 "Odyssey" pc 1200 dry-cell batteries for generator start (1 ea. generator) Sixteen "Trojan" I-16 6 volt batteries for ships 24 volt dc service system
- (2) "Trace" 4kw/120 amp inverter/charger for charging ships battery system, interface for 8kw and house battery bank monitoring panel
- Newmar 24 volt battery charger for main engine batteries
- Newmar 24 volt battery charger for service batteries (back up charger)
- Newmar 24v to 12v transformers
- (2) 75 amp (engine alternators) for charging engine start batteries
- (2) 160 amp (large frame engine alternators) for charging ships service batteries
- (2) Charles Marine ISO-Boost shore power isolation transformers
- Maringo shore power 125/250 vac
- 50 amp inlets aft & one fwd
- Maringo 100 amp shore power 125/250 inlet aft on a Glendenning cable master and one 75 foot extender
- Maringo phone/TV inlets (one aft & one fwd)
- 75' 125/250 amp shore power cords
- AC & DC back-lit distribution/circuit breaker panel w/digital amp & volt meters
- Shielded wiring for stereo/TV speaker systems
- Color-coded high quality shielded co-ax with "pro-connect" crimp on connectors for TVs and miscellaneous
- Electrolysis and Bonding system with copper strapping connected to two zinc plates at transom
- AC duplex receptacles throughout with GFI protection in dedicated areas "BEP" vapor proof battery selector switches
- "Exalto" heavy-duty variable speed windshield wiper system
- International navigation lights
- "ACR" high intensity spotlights with skylounge station controls

- “PBX” type phone/intercom system

Hull Design and Construction

- Full-planning hull, 13.5 ° deadrise at transom, generous flair at bow sections, integral swim platform
- Vessel scantlings, construction, systems, and installations meet or exceed all applicable ABYC & ABS standards
- One-piece hull, hand laminated FRP utilizing Bi-directional, and Uni-directional, Knytec, and Cotech high-quality resin and vacuum bagging
- Solid FRP below the waterline with Vinylester resin laminates for maximum osmosis protection
- “Interlux Gel-shield” is applied to add osmosis protection during build time and after
- Full-length hull girders of high-density foam core and bi & uni-directional Knytex
- Exterior hull finish in high gloss white, Cook gel coat with vinylester skin coats below water line⁴
- Upper deck area AWL Grip painted 2018
- Smooth finish on all bilge areas

Superstructure and Deck

- Hand laminated FRP utilizing bi & uni-directional, Knytech & Cotech w/Divinycell sandwich, high-quality resin and vacuum bagging, NIDA core per plan.
- Proper high compression cores as required for hardware mounting
- (4) Main (watertight) bulkheads padded and cored with appropriate sandwich materials Sylomer floating floor system (per plan) with sound absorption and insulation
- Sylomer floating bulkheads (per plan) Exterior - Nonskid on boat deck

Refit and Upgrades

- In 2016 all lighting was updated to LED throughout the boat.
- During 2018/19 through boat had an extensive refit and refurbishing performed by Lyman Morse in Maine. The refit included servicing of all equipment and system, new soft goods, the addition of the dining area, conversion of the flybridge area to an enclosed skylounge and repainting of the upper deck areas.
- A complete list of the refurbishing completed is available.

Broker Comments

Paragon Motor Yachts has set the standard for building quality custom yachts in the 80' to 108' range. Built by the only American-owned and managed boatyard in Southern Taiwan, each Paragon Motor Yacht is the result of expert design and quality. They work closely with each client to design and build custom yachts on proven hull designs, that yield exceptional ranges and an incredibly smooth and quiet ride. This 94' Paragon has a warm welcoming feel as soon as you walk through the salon doors to the open layout of the main deck. Rich Mahogany can be seen throughout. The boat flows well and has a spacious skylounge and aft deck with all the amenities for entertaining.

Exclusions

Personal items, artwork, decor, cutlery, dishes, etc. Full list will be provided.

Disclaimer

The company offers the details of this vessel in good faith but cannot guarantee or warrant the accuracy of this information nor warrant the condition of the vessel. A buyer should instruct his agents, or his surveyors, to investigate such details as the buyer desires validated. This vessel is offered subject to prior sale, price change or withdrawal without notice.



Profile



Salon



Salon



Salon



Dining Area



Dining Area



Galley



Owner Stateroom



Owner Stateroom



Owner Bath



VIP Stateroom



VIP Stateroom



Guest Bath



Guest Bath



Guest Stateroom



Captain's Cabin



Pilothouse



Pilothouse



Helm



Helm



Upper Deck



Upper Deck Seating



Upper Deck Grill



Upper Deck



Upper Deck



Foredeck



Foredeck Seating



Aft Deck



Aft Deck



Aft Deck



Swim Platform



Crew Quarters



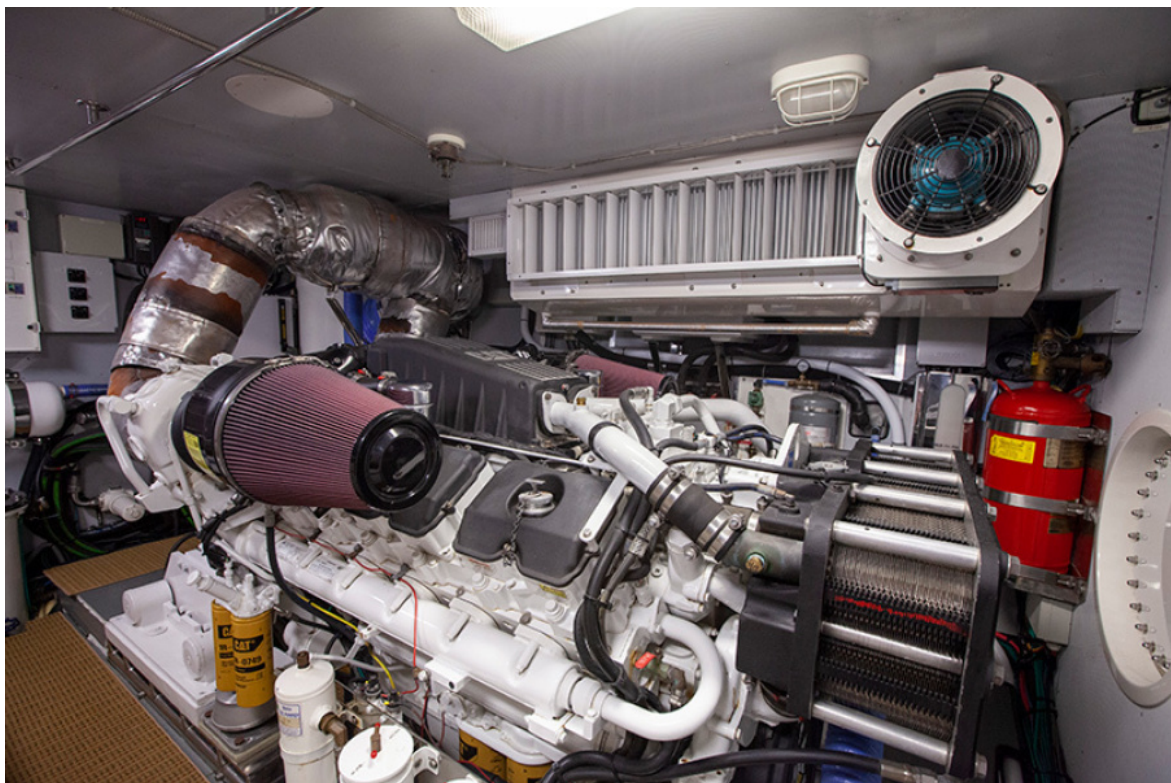
Crew Bath



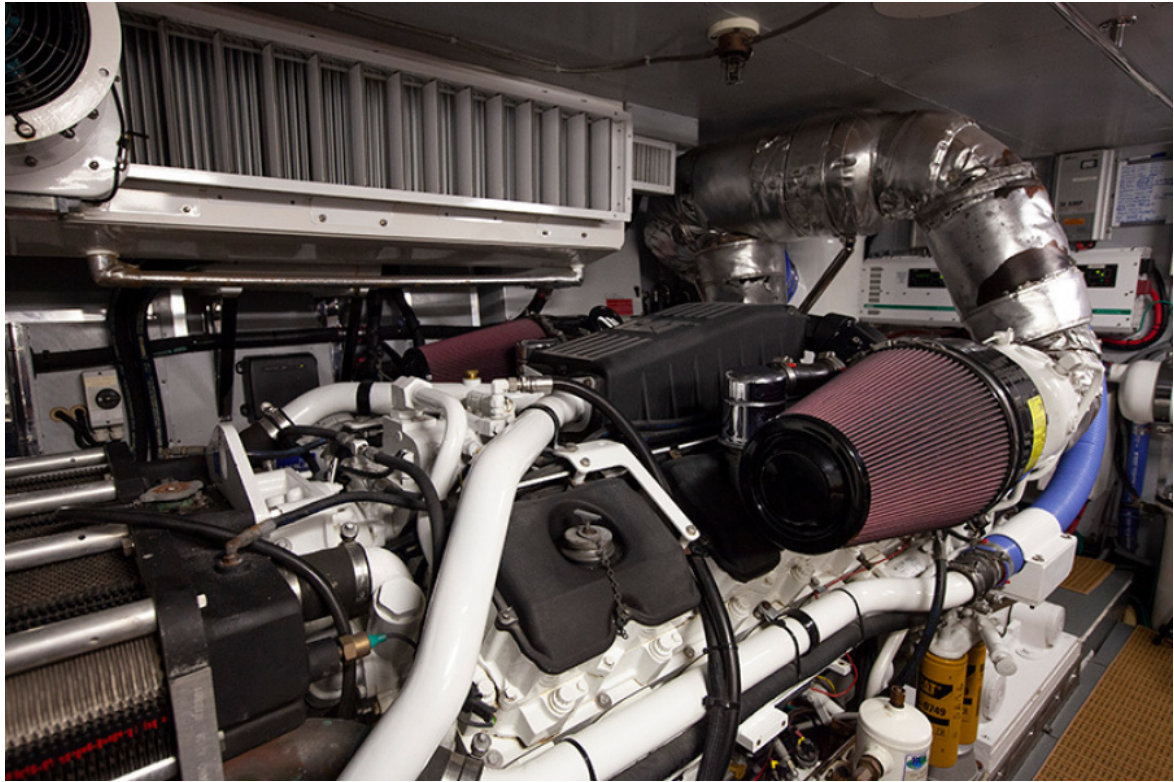
Aft Lazarette



Engine Room



Engine Room



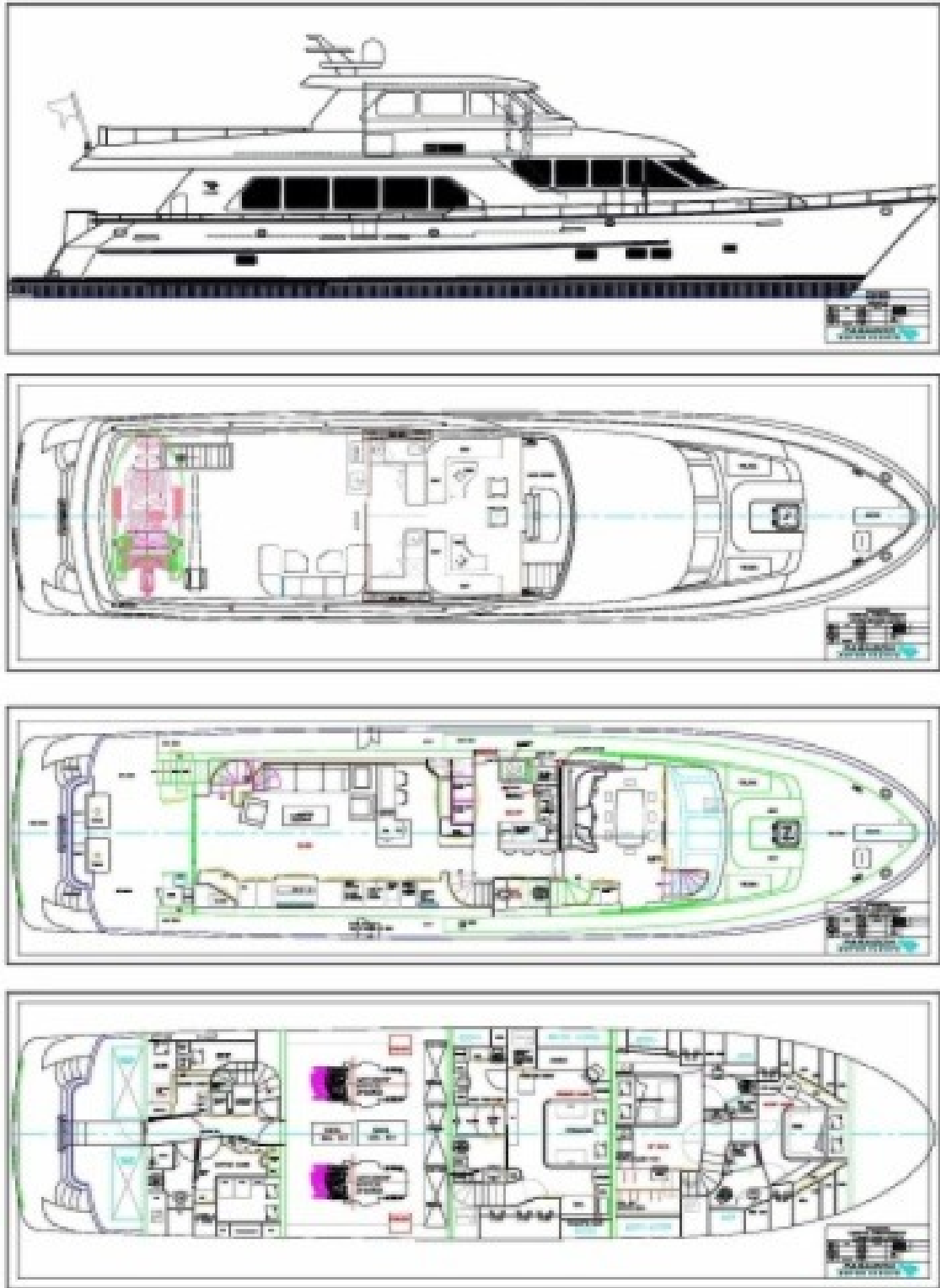
Engine Room



Port Stern Profile



Port Bow Profile



Layout