



# SAM

32' (9.75m) 2013 Columbia Carbon 32 Grand Prix  
Marina Del Rey California United States



## OVERVIEW

**\$185,000**

Manufacturer:	<i>Columbia</i>		
Engines:	1 Yanmar	Hull Material:	Composite
Engine Model:	2YM15	Cruise Speed:	
Engine HP:	15	Max Speed:	
Beam:	10' 2"	Cabins/Heads:	/ 1
Max Draft:	7' 6"	Fuel Type:	Diesel
Water:	12 G (45.42 L)	Fuel:	10 G (37.85 L)



## Data Sheet

Category: Racing Sailboat

Condition: Used

Model Year: 2013

Beam: 10'2" (3.10m)

Max Draft: 7' 6" (2.29m)

Min Draft: 2' 6" (0.76m)

LOA: 32' (9.75m)

LWL: 27' (8.23m)

Single Berths: 2

Double Berths: 2

Heads: 1

Fuel Type: Diesel

Hull Material: Composite

Displacement: 4500 lbs

Fuel Tank: 10 gal (37.85 liters)

Fresh Water: 12 gal (45.42 liters)

Holding Tank: 15 gal (56.78 liters)

HIN/IMO: COL000000013

Stock #: B93092

## Engines/Generators

### Engine 1

Yanmar

2YM15

Inboard

15HP

11.19KW

Fuel: Diesel

Hours: 600

Year: 2013

Location: Middle

## Summary/Description

Become the new owner of SAM, who just finished an amazing racing season in southern California with more wins than most, inshore or offshore, fully crewed or shorthanded.

### **32' 2013 Columbia Carbon 32 Grand Prix Inshore/Offshore Race Boat**

Become the new owner of SAM, who just finished an amazing racing season in southern California with more wins than most, inshore or offshore, fully crewed or shorthanded. SAM won the very competitive Sunset Series PHRF C and finished 3rd (one second behind 2nd place) at the select King of The Hill race in Marina del Rey, CA this year.

Race-ready NOW and fully equipped to win PV Race / N2E / Big Boat / SoCal300 /Transpac / Mac / Caribbean 600 / or simply inshore.

Race distance / round-the-buoys / shorthanded on grand prix Carbon Fiber Race Boat with MINIMAL outlay and running costs - far less than J111, Class 40 or TP52.

Boat is fully equipped with new electronics (including best in class below deck autopilot), lots of new running rigging halyards and sheets, one July 2023 new A2 spinnaker (Ullman Sails), 2022 lithium package, 2022 racing bottom and 2 sets of 3Di and 3DL sails and spinnakers. The engine was completely rebuilt in summer 2022.

This is turn key for offshore or inshore racing and the lifting keel makes it easy to transport this boat anywhere.

Do not miss this opportunity; call text, or email the listing broker for a showing today!

## Concept

Built to custom specifications in the summer of 2013, SAM is hull # 5 out of 6 boats manufactured by Columbia Yachts. She is the fastest, safest, and most complete Columbia Carbon 32 ever built. She benefits from learning derived from the earlier boats and possesses a unique balance of go-fast, ease-of-use, and superior functionality. SAM is also then only Carbon 32 equipped with a carbon mast, carbon boom and rod rigging. SAM can do it all:

Distance Racing

Around the Buoys Racing

## Shorthanded Racing

Family / Fun / Beer Can

SAM' size and low sheet loads make it a perfect boat to learn high performance, almost skiff-like sailing. She will plane under perfect control in less than 17 knots of breeze. SAM is also a very good light air machine due to her low wetted surface and light displacement. She can win in the light stuff or in a breeze. SAM can and has done it all. In ten seasons of racing (7 in the North East and 3 in on the West coast), SAM has amassed an impressive list of wins in buoy, distance, and shorthanded racing.

Once on the west coast, the owner committed to racing to Hawaii in the 2023 Transpac. Although the boat retired 250nm after starting (injury), the boat is fully ready for offshore racing and showed great speed and potential throughout any ocean race. Unlike other small race boats, SAM has enough volume forward to stay above the waves while planning at 20 knots of boat speed. Additionally, SAM has the comfort and efficiency of a functional interior and diesel engine making her well suited for ocean racing – either fully crewed or shorthanded. The Columbia Carbon 32 is light and, with its retractable keel, very easy to transport or store on its custom aluminum trailer.

## Engine

- 2013 Yanmar 2YM15. Power: 15hp. Engine Hours ~ 600 hours.
- ZERO drag, fully retractable shaft with non-folding 3 blades propeller.
- August 2022: complete Rebuilt - \$7,000.
- February 2022: new Droplas®, new rebuild of shaft / prop assembly, new u-joint.

## Accommodations

SAM' interior is modern and very functional for racing and short family cruises.

- The interior is constructed from vacuum resin - infused carbon with PVC foam core.
- The cabin sole is laminated carbon fiber.
- There is standing headroom below (if you're shorter than 5'10"...).
- The two aft quarter berths (double sized) have adjustable leeboards.
- There are two additional berths in the salon with lee cloths.
- The navigation station is located to starboard.
- The galley is located to port with deep sink, electrical pump for potable water, and gimbal for a JetBoil stove on starboard. There are integrated ice boxes (or dry storage) port and starboard.
- The head is located in a compartment forward of the mast.
- Two sets of custom, integrated storage bags for crew gear (removable), custom made in July 2023 (\$1500).

## Electronics & Navigation

All electronics and navigation equipment replaced and upgraded in 2022

**Electronics - in excess of \$32K, prior to installation.**

### ***nke Marine Electronics***

- 3 displays (mast, bulkhead, nav. station). All can control autopilot.
- 2 pilot pads / displays control in cockpit (near helm port and starboard).
- 1 wireless autopilot / MOB remote control.
- 1 data multiplexer (wifi, NMEA, USB).
- Battery monitor - direct data into nke displays.
- Barometer into nke displays
- Aluminum High resolution mast head unit.
- Mast head unit avionic cable (total 24 ounces into the mast for limited windage).
- 9x compass
- High frequency GPS antenna
- Ultrasonic speed sensor and Depth sensor
- Rudder angle sensor
- Gyropilot computer 2 (steering modes: heading, AWA, TWA, rudder angle).
- Raymarine Drive-AutoP Linear Type 1
- USB cables for connection of nke and AIS into navigation computer (computer not included)

### ***Chart-plotter***

- 12" screen Zeus 2, up to date.
- Connected to nke via Actisense gateway.
- Connected to AIS via NMEA2000.

### ***AIS and VHF***

- NAIS-400 class B transponder

- NSPL-400 AIS/VHF antenna splitter
- Simrad VHF connected to chart plotter via N2K network.

## Electrical

A simple and robust electrical system, all replaced in 2022 (valued \$10,000).

### **General**

- Complete DC panel: Circuit breaker / switches for navlights, running lights, electronics, VHF/

AIS, Chart-plotter, Stereo and accessories.

- Tri-color LED nav lights on top of mast
- Redundant LED stern running light on deck (two separate circuits required for offshore)
- Four USB charging ports.
- Red / white desk lamp at nav station
- Automatic bilge pump
- LED lights throughout interior

### **Batteries**

- Engine battery Group 24. Battery ON/OFF switch. Charged via engine alternator.
- Two House banks (port and starboard) x 105amp Lithium 2021 – Iron Phosphate (LiFePO4).

26 lbs each (by Lion Energy, lifetime warranty). 1/OFF/2 Switch.

- BMS (Battery Management System) built-in
- Victron AC charger for shore charging (need extension cord).

### **Charging**

- Hydro-generator (watt and sea, France)
- 500 watts with brand new AC/DC convertor.
- connected to both batteries
- Removable bracket of the transom.
- Engine - via Victron DC Charger 30amp.
- Solar Panel with wire harness into Hydrogenerator MPPT.

## Hull & Deck

The Columbia Carbon 32 is a sophisticated, highly engineered light displacement racing yacht designed for wide variety of uses from day sailing to trans-oceanic races.

- The hull is Vacuum Resin Infused Carbon Fiber with PVC foam core and is finished with a DuPont Marine urethane product which provides high gloss. It is easy to maintain and is extremely durable. V-berth and slamming zone reinforced with transversal stringer.
- 2022 Proline antifouling sprayed antifouling bottom paint (valued \$7,000).
- The deck is Vacuum Resin Infused Carbon Fiber with end grain balsa core with monolithic or high density reinforcements in way of hardware mounting and is finished with a white gel coat and light grey DuPont urethane nonskid
- Large, self-bailing cockpit
- Custom carbon fiber rudder
- Transom-hung emergency rudder (required for offshore)
- Carbon fiber tiller with Spinlock tiller extension
- Duplicate carbon fiber tiller fulfills requirement for emergency tiller
- Retractable, high-aspect ratio bulb keel
- Crane for lifting keel
- Lightweight, end-grain balsa-cored vacuum resin-infused companionway hatch
- Polished carbon cove stripe, boot top, and stripe on deck
- Vacuum resin-infused, high aspect ratio carbon fiber rudder (solid carbon fiber rudder post).
- Lewmar low profile fore-deck hatch
- Custom, fabricated bow and stern pulpits
- Offshore legal double stainless steel lifelines with pads for hiking
- Integrated life raft compartment with removable hatch cover , doubles as swim step.
- Custom cockpit foot chocks

## Spars & Standing Rigging

"SAM" is the only Carbon 32 equipped with a complete carbon spars and rod rigging. This upgrade was evaluated by Hall Spars at \$60K+, shipping not included.



- Carbon Hall Spars Mast, with 2 swept back carbon spreaders.
- Carbon Hall Spars Boom with 2 reefs and outhaul.
- Hall Spars vang, serviced 2023.
- Harken Battcar ball bearings system for easy hoisting and reefing from the cockpit.
- June 2021 Harken head foil
- Standing Rigging all rod. Continuous rigging for easy tension adjustment at deck level - uppers, intermediate, lowers and headstay.

## Sail Inventory

SAM has dominated the racing circuit in light and breeze conditions with multiple racing sails from 2013 and 2014.

There are 2 complete sets of sails, 3Di and 3DL and 2 new Ullman Sails Spinnakers (July 2023).

### 2023

- Brand new, July 2023 Ullman Sails A2

### 2013-2018

- North Sails A2 (x2), A1.5, A5
- North Sails Code Zero with Karver Continuous Furling Unit.
- Spinnaker Staysail Norlon NO 75.
- Quantum A2 and A3.5/4
- Full set of North 3Di - square top main (2 reefs), #1, #2 (all with spreader patches and glow draft stripes).
- Full set of North 3DL - pin head main, # 1, #2, #4 (offshore required and legal), j
- Jib top reacher ("harbor blaster) with whisker pole and custom and removable carbon attachment plate for the mast end of the pole.
- Storm sail like new.

## Running Rigging and Deck Hardware

- Complete set of sheets, duplicates, new and originals.
- One main halyard. No wear.
- New spinnaker halyards port and starboard (transpac, never used).

- Jib halyards (port and starboard).
- Floating clew for jib (with all control lines)
- Tack lines port and starboard
- New running backstays (June 2023). Reinforced backstays attachment with G10 backplate.
- Winches serviced twice per year (6 x Harken 35ST), last June 2023
- Clutches serviced every year (Spinlock, 8 x Pit and 2 x tacklines, all new kits), last June 2023
- Vang serviced 2023.
- Harken blocks and fittings throughout
- Rigid 24:1, double-ended boom vang
- All running rigging top-of-line spectra or /dyneema core
- All lines controllable from cockpi
- Heavy breeze and light air spinnaker sheets
- Heavy breeze and light air jib sheets.
- Karver furler for Code Zero and Spin Staysail
- Six Harken 35 Self-tailing winches
- Four winch handles
- Ten Spinlock clutches for all halyards, reefs, outhaul and tacklines. All serviced June 2023.
- Carbon fiber bow sprit with bobstay (removable at the dock for 5 less feet of slip fees).

## **Additional**

- Kelp cutter.
- June 2021 Jeffa Lower Bearing. Upper bearing serviced July 2023.
- Complete emergency rudder with its own tiller.
- Backup tiller
- Complete aluminum trailer with anti-gravel netting, mast support, straps, spare tire,...
- Hull and deck covers for traveling.
- Brand new customs organizer bags down below \$1500
- Boom cover for main sail and boom tent.
- 1 manual bilge pumps; 1electric

- 2 fire extinguishers
- Fortress Anchor, chain, and rode
- Lifesling
- Fixed bowsprit, 5 feet.
- Carbon floors panel in salon. Foam padding in v-berth. "Columbia blue" painted.
- Stereo system with new Sony cockpit speakers
- Boat cleaned, buff and wax twice per year.

## Ratings

- 2023 PHRF southern california (66/45/48)
- 2023 PHRF northern california (57. DW rating 531)
- 2023 ORR Full measurement certificate - \$1220

## Features

### ELECTRONICS

- Depthsounder
- Long-speedometer
- Wind Speed and Direction
- Navigation Center
- Plotter
- Autopilot
- Compass
- GPS
- Cockpit Speaker

### SAILS

- Battened Mainsail
- Genoa
- Storm Jib
- Gennaker/Cruising spinnaker

- Asymmetric Spinnaker

#### RIGGING

- Tiller

#### INSIDE EQUIPMENT

- Marine Head
- Electric Bilge Pump
- Manual Bilge Pump

#### ELECTRICAL EQUIPMENT

- Shore Power Inlet
- Inverter

#### OUTSIDE EQUIPMENT / EXTRAS

- Solar Panel

#### ADDITIONAL EQUIPMENT

- Road Trailer

### Disclaimer

The company offers the details of this vessel in good faith but cannot guarantee or warrant the accuracy of this information nor warrant the condition of the vessel. A buyer should instruct his agents, or his surveyors, to investigate such details as the buyer desires validated. This vessel is offered subject to prior sale, price change or withdrawal without notice.





























































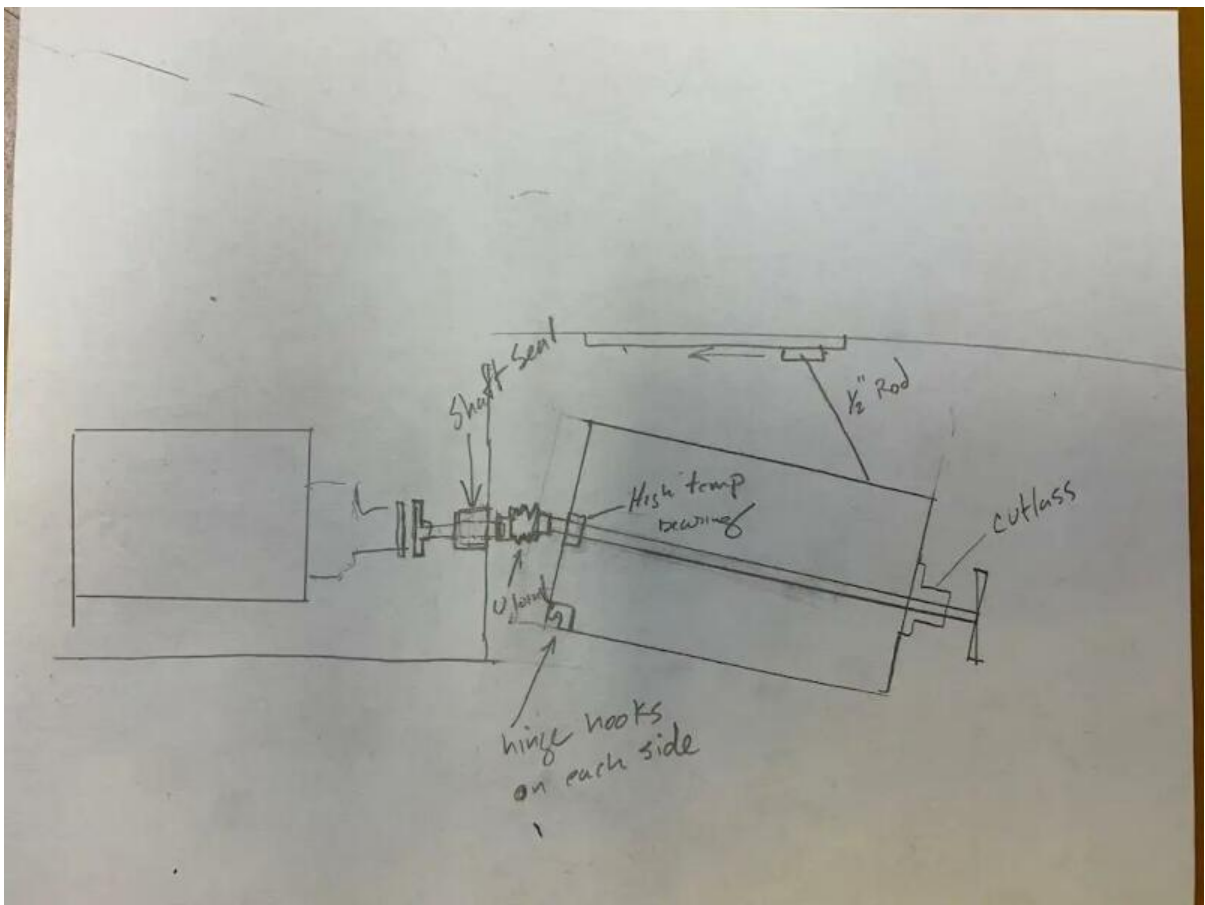






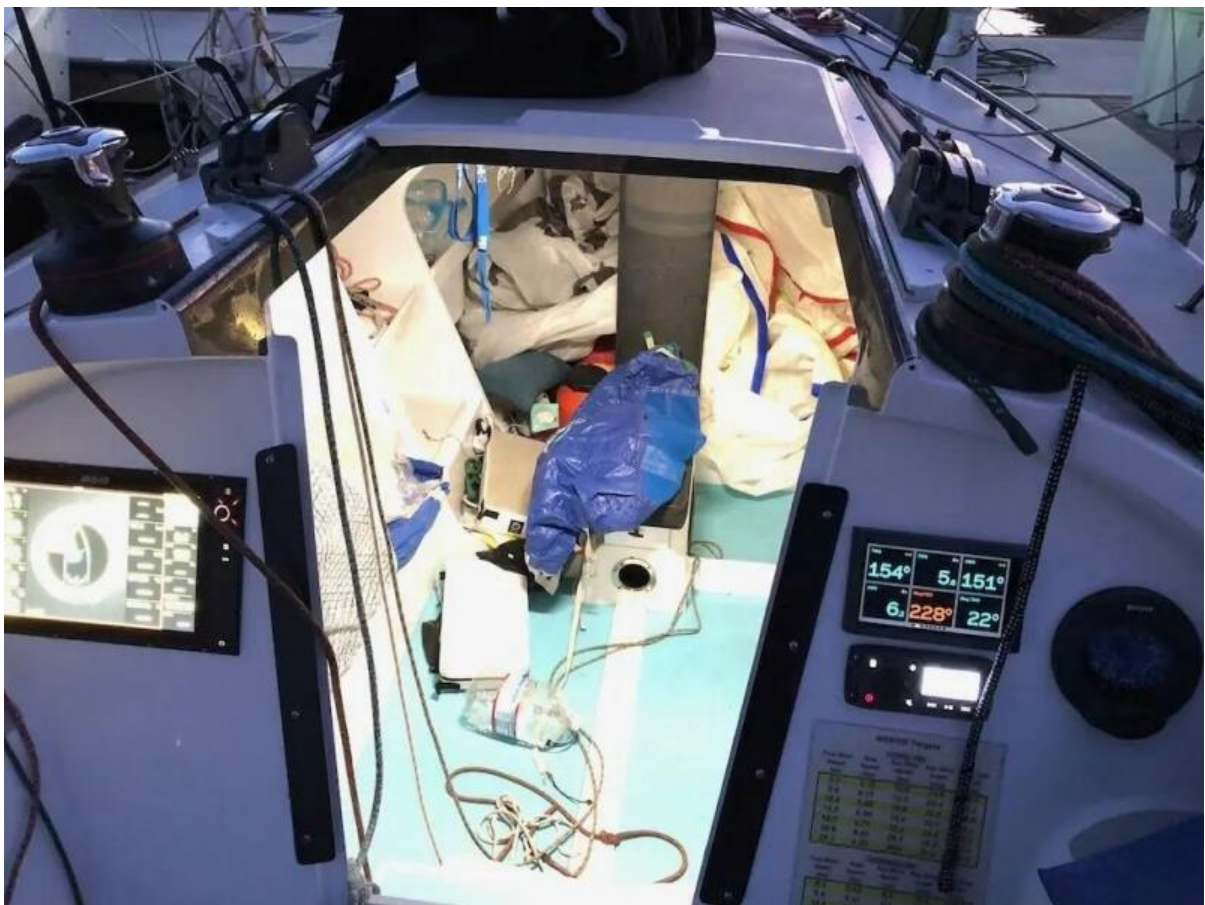






















































©Joysailing 2021 Cal Race Week - Sponsors Naos Yachts, North Sails, & Mount Gay Rum





