



Happiness II

80' (24.38m) 2003 Grand Harbour 80
Victoria British Columbia Canada



OVERVIEW

\$1,749,980

Manufacturer: *Grand Harbour*
Engines: 2 Caterpillar
Engine Model: 3406
Engine HP: 800
Beam: 19' 8"
Max Draft: 6' 3"
Water:

Hull Material: FRP
Cruise Speed:
Max Speed:
Cabins/Heads: 4 / 5
Fuel Type: Diesel
Fuel:



Ari Sherr Ari@denisonyachting.com

1-772-240-0888

Data Sheet

Category: Motor Yachts

Subcategory: Cruisers

Condition: Used

Model Year: 2003

Refit Year: 2019

Documented Year: 2003

Beam: 19'8" (5.99m)

Max Draft: 6' 3" (1.91m)

Min Draft: 6' 3" (1.91m)

LOA: 80' (24.38m)

Cabins: 4

Sleeps: 7

Convertibles: 1

Single Berths: 2

Queen Berths: 2

Heads: 5

Crew Cabins: 1

Crew Sleeps: 3

Crew Mess: 1

Fuel Type: Diesel

Super Structure Material: FRP - with Ferro Imported: Yes

White (GV48001) Gelcoat

Hull Material: FRP

Hull Shape: Semi Displacement

Hull Finish: Ferro White (GV48001)

Gelcoat

Air Conditioning: Yes

Stabilizers: Standard

Stabilizer Brand: Naiad

Bow Thruster: Yes

Stern Thruster: Yes

Builder: Grand Harbour

Designer: Sparkman & Stephens

Interior Designer: Pokela Design

HIN/IMO: USL80120F102

Stock #: B92965

In Stock: Yes

Engines/Generators

Engine 1

Caterpillar

3406

Inboard

800HP

596.56KW

Fuel: Diesel

Hours: 3790

Hours Date: 11-01-2023

Serial #: 9WR02413

Location: Starboard

Engine 2

Caterpillar

3406

Inboard

800HP

596.56KW

Fuel: Diesel

Hours: 3790

Hours Date: 11-01-2023

Serial #: 9WR02410

Location: Port

Generator 1

Caterpillar

25KW

Hours: 10

Summary/Description

'Happiness II', is designed by the innovative team at Sparkman & Stephens, offering luxury, quiet & efficient performance. Meticulously maintained & boat house kept. Her versatile interior spaces offers 4 staterooms plus an additional crew cabin & 6 heads, making her a leader in her class.

Motor Yacht 'Happiness II' epitomizes opulence and performance. This 80ft Grand Harbour yacht, masterfully designed by the renowned Sparkman & Stephens, effortlessly combines luxurious living with smooth, efficient cruising. It's meticulously maintained and boat house-kept condition ensures a pristine experience. As a cherished 2-owner boat with a dedicated full-time crew, it boasts four staterooms and a crew stateroom, offering versatile interior spaces that redefine yachting comfort, making 'Happiness II' a symbol of unmatched luxury and refinement on the water.

Key features:

- Included in the sale is a 120ft Boat House
- LLC owned and Canadian Taxes Paid
- Modern Pepwave MaxTransit WiFi System and Starlink is ideal for staying connected with high speed internet at sea
- Interior Refit in 2019
- 13ft Zodiac Yacht Line 400 RIB Tender with 50hp Yamaha Outboard (2022)
- HRO Watermaker (50 GPH)
- Lots of storage, redundant systems and refrigeration making it ideal for long range cruising

Overview

Interior

Main Salon

- Large Windows providing Expansive Views and Natural Light
- 32inch Samsung Smart TV on a hide-away lift - Onkyo 9.2 Channel THX Receiver, Apple TV, PepWave MaxTransit Router & WIFI System (2019) connected to **Starlink**
- Sony Surround sound speaker
- CruisAir Heating and Airconditioning Controller
- Formal Dining table for 8 guests retracts into bulkhead to give additional space in salon for standing cocktail parties. Newly updated chairs
- Abundance of storage
- AV rack featuring surround sound amplifier and controls as well as a dvd / blu-ray player
- Exceptionally comfortable and velvet like L-Shaped Ultra-Leather settee for 7 guests with storage underneath (2019)
- Spacious Day Head and Storage Room
- Large Windows providing Expansive Views and Natural Light
- CruisAir heating and air conditioning control

Main Salon Wet Bar

- New Scotsman DCE33A-1SSD - Gourmet Cube Ice Machine with Gravity Drain
- Sink with storage below
- Bottle storage cabinet
- Glass storage

Main Deck Day head

- Sealand Vacuflush head
- Vanity with storage
- Sink
- Technical space with large storage area

Galley

Expansive and well laid out with an abundance of Counter Space, Storage Areas and Natural Light. Bamboo Deck throughout

- Informal Dining table with bar stool and L-shaped settee for 7 with Designer Pillows which has storage underneath
- Miele electric griddle, Miele 2-burner induction cooktop, Miele 2-burner gas cooktop
- KitchenAid extractor fan with light inbuilt
- GE Monogram Microwave
- Large Bosch Stainless steel oven
- Appliance garages with toaster
- 2 x Stainless steel sinks with incinerator
- Drinking water faucet with Pentair 5 stage water filtration (reverse osmosis with mineral additive) (2019)
- Instant hot water faucet
- Bosch Jet Dry dishwasher
- Large Subzero refrigerator 601R
- Large Subzero freezer 601F
- Pull out pantry storage
- Spice rack cupboard
- Samsung TV
- CruisAir heating and air conditioning control

Bridge

- Ratheon Auto Pilot (ST7000)
- Ratheon Radar Screen (RI180 Color)
- Ratheon RC631 Chart Plotter
- Garmin Touch Screen GPS Map 7215
- Raymarine Hybrid Touch Screen
- Garmin GPS Map 4008 Screen
- Bow & Stern Thruster controls for easy docking
- Hydraulic PTO selector switch can easily switch from one engine to the other

- Maxwell windlass controller
- Naiad Stabilizer controller
- Jabsco Search light
- Raytheon RAYPILOT non-followup steering controller
- Hynautic trim tab controls
- Raytheon Loud-hailer RAY430
- Raytheon RM300 GPS unit
- ICOM IC-M802 VHF Radio (MMSI 538071468) (CALL SIGN V7A2787)
- Standard Horizon Ram mic cmp23 VHF
- Raymarine DSC enabled RAY 53 VHF
- Raymarine / Raytheon ST60 multifunction displays for: Rudder angle, wind, compass angle, boat speed, depth
- 2 x Raymarine Series A Depth Sounders
- Clarion CCTV Screen connected to pro video by CSI/SPECO video feed computer for Cameras to Sides and Engine Room
- HRO Systems horizon reverse osmosis water maker control
- NEC repeater computer screen for Garmin
- HP Envy printer and scanner
- PEP wave wireless 3G data internet
- Chart Drawers
- Captain / watchkeeper night watch single berth
- L-Shaped settee around teak table
- Opening skylight hatches in deckhead
- Plush Stidd helm Chair
- CruisAir heating and air conditioning control

Accommodation

Master Stateroom

Separate Private staircase accessed from main salon to master stateroom lobby.

Shoji screens, elegantly adorning every corner of this stateroom, bestow an atmosphere of graceful simplicity and profound tranquility, transforming this stateroom into a serene sanctuary for relaxation after a day of adventure on the water.

- Cedar lined hanging closet with large bi-folding doors and six drawers
- Vanity with mirror in port aft corner with new Designer Chair
- King Size Island Berth with Custom Organic Mattress
- Designer Bedding and Pillows
- CruisAir heating and air conditioning control

Mast Cabin Ensuite

- Shoji privacy screens

- Jacuzzi Tub
- Clean touch bidet head
- Large Kohler sink

Study / Port side guest stateroom

- Work station Desk with upgraded Designer chair
- Cedar lined hanging closet
- File Storage
- Bosch Dryer (full size)
- Blomberg Washing machine (full size)
- Large couch for 4 that converts into a single berth feature updated Designer Pillows
- Samsung TV with Satellite Receiver
- CruisAir heating and air conditioning control

Study Ensuite Head

- SeaLand Vacuflush head
- Vanity with Kohler rhythm stainless steel with hush coat sink
- Large cedar lined storage closet

Starboard Guest stateroom

- Two single berths with updated Custom Organic Mattresses and Designer Bedding and Pillows
- Hanging closet
- Reading Lights
- Samsung TV with Satellite Receiver
- Shoji Screens with storage behind
- CruisAir heating and air conditioning control
- Ensuite Head with shower and Sealand Vacuflush head

VIP stateroom

- Skylight
- Queen sized walk-around berth with Custom Organic Mattress that has storage space underneath
- Lots of storage throughout
- Cedar lined hanging closet
- Samsung TV with Satellite Receiver
- CruisAir heating and air conditioning
- Ensuite with Sealand Vacuflush Head and a large shower with seat

Crew Cabin

- Bunk bed with Custom Organic Mattresses (2023) - Single berth up top and Double berth below
- Abundance of storage
- Cedar lined hanging closet
- New Fusion stereo head unit (2023)

Crew Cabin Ensuite

- Large shower with seat
- Sealand Vacuflush head
- Vanity with sink
- CruisAir heating and air conditioning control

Crew Galley

- GE Microwave
- Stainless steel sink
- 2 burner Miele stove top
- Hier Refrigerator with freezer compartment
- Emergency escape hatch
- CruisAir heating and air conditioning control
- Full Size Bosch Washer and Dryer

Exterior

- Marquip gangway steps for boarding at mid-ships
- Teak Cap Railings with Canvas Covers (Excellent Condition)
- 316 Stainless steel cleats and rails throughout

Swim-platform

- Teak deck
- Staple rails
- Stern anchor capstan Maxwell 2200
- Whale Hot & Cold Cockpit shower
- 50amp Shore Power connection on Glendenning Retractable Cable Master reel
- Euro Style stair case to aft deck
- 2 x Spare shaft holders with one spare shaft on board
- Swim-ladder

Aft Deck

- Teak sole
- Acrylic doors to port and starboard to add extra weather protection for the aft deck
- Wind / Sun / Privacy Shades on sides and aft
- Pioneer speakers
- Overhanging brow which covers the dining table so it
- Large teak dining table with ample seating for 10 guests

Bow

- Large bosuns locker which you can stand in
- Wet storage locker for fenders
- Hydraulic Windlass with 170lb Plow anchor & new 1/2inch Cable & 7/16 inch chain 250ft total (100' of chain and 150' of cable) (2023)
- 50amp Shore Power connection on Glendenning Retractable Cable Master reel

Sundeck

- Lounge Seating for 10 guests
- Low maintenance non-skin deck
- Gas grill center-line with stainless steel cover
- Deep freezer
- Nautical Structures EZ2000 Davit (2000lbs SWL) with upgraded controller
- 13ft Zodiac Yacht Line 400 RIB Tender with 50hp Yamaha Outboard (2022)
- Helm Station with Bridge wing and roaming docking controller for easy docking
- Crewsaver Mariner Mk2 8 Person Life-raft (2022)
- ACR EPIRB (2020)

Engine room / Technical equipment

- All Servicing Fully up to date
- Reverso oil change pump to make servicing easy
- Snap-on Tool chest and bench with vice
- HRO Watermaker (50 GPH)
- UV Water Filtration System (2019)
- 2 x 20 Gallon Hot Water Tank: Kukuma Model 11871
- 2 New Aircon circulation pumps (2023)
- Xantrex Trace Engineering Power Conversion Center 4000W Inverter / Charger (SW4024MC2)
- 2 x Fireboy Automatic Fixed Fire System (FE241)
- Naiad Marine Hydraulic Reservoir for Thruster and Stabilizers
- Stabilizers: Naiad Model 2ZNP
- Hydraulic Bow and Stern Thrusters: SidePower Model 10LHT
- New Cat 25kW Generator (2023)
- Dual Racor Fuel Filters
- Twin 800hp Cat 3406 Engines (S/N: 9WR02413 / 9WR02410)

- Stainless Steel Exhaust with Insulation Wrap on both Main Engines (Dec 2018) - Underwater Exhaust
- Natural Flow Engine Room Blowers
- 1 Set of spare Props, 1 spare Prop Shaft and many other spare parts included
- Updated Hydraulic steering lines (2023)
- All Batteries recently load tested and in good working order
- New smoke detectors installed throughout (2023)

Mechanical Disclaimer

Engine and generator hours are as of the date of the original listing and are a representation of what the listing broker is told by the owner and/or actual reading of the engine hour meters. The broker cannot guarantee the true hours. It is the responsibility of the purchaser and/or his agent to verify engine hours, warranties implied or otherwise and major overhauls as well as all other representations noted on the listing brochure.

Disclaimer

The company offers the details of this vessel in good faith but cannot guarantee or warrant the accuracy of this information nor warrant the condition of the vessel. A buyer should instruct his agents, or his surveyors, to investigate such details as the buyer desires validated. This vessel is offered subject to prior sale, price change or withdrawal without notice.

Sellers personal items not included.



Profile Profile



Profile Profile



Profile Profile



Profile Profile



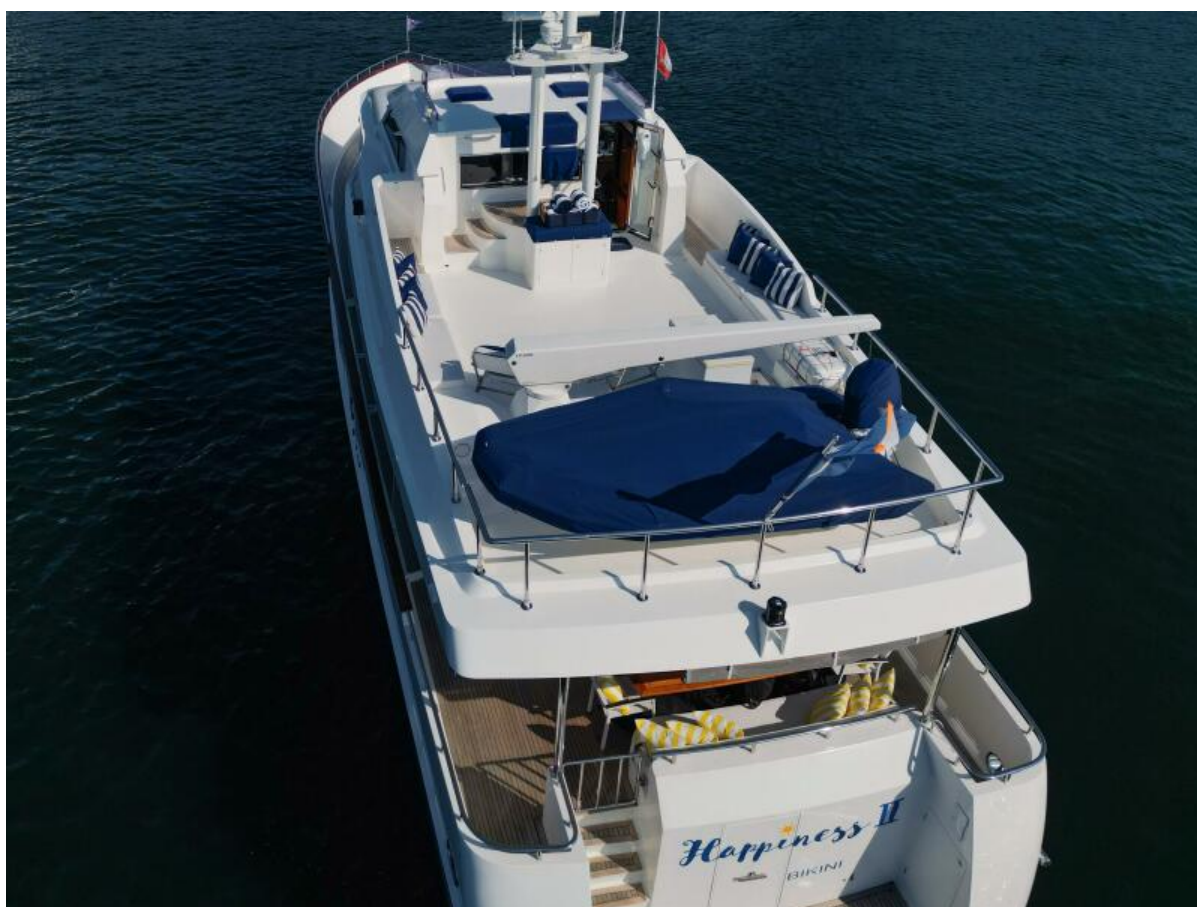
Profile Profile



Profile Profile of Bow



Profile Profile



Profile Profile of Sun Deck



Main Deck Aft Main Deck Aft



Main Deck Aft Main Deck Aft



Main Deck Aft Main Deck Aft



Main Deck Aft Main Deck Aft



Main Deck Aft Main Deck Aft



Main Salon Main Salon



Main Salon Main Salon



Main Salon Main Salon



Main Salon Main Salon



Main Salon Main Salon with TV on hide-away lift



Main Salon Main Salon



Main Salon Formal Dining Table which retracts into bulkhead



Main Deck Day Head Day Head



Main Deck Lobby Main Deck Lobby



Informal Dining Area Informal Dining Area



Informal Dining Area & Galley Informal Dining Area & Galley



Informal Dining Area & Galley Informal Dining Area & Galley



Galley Galley



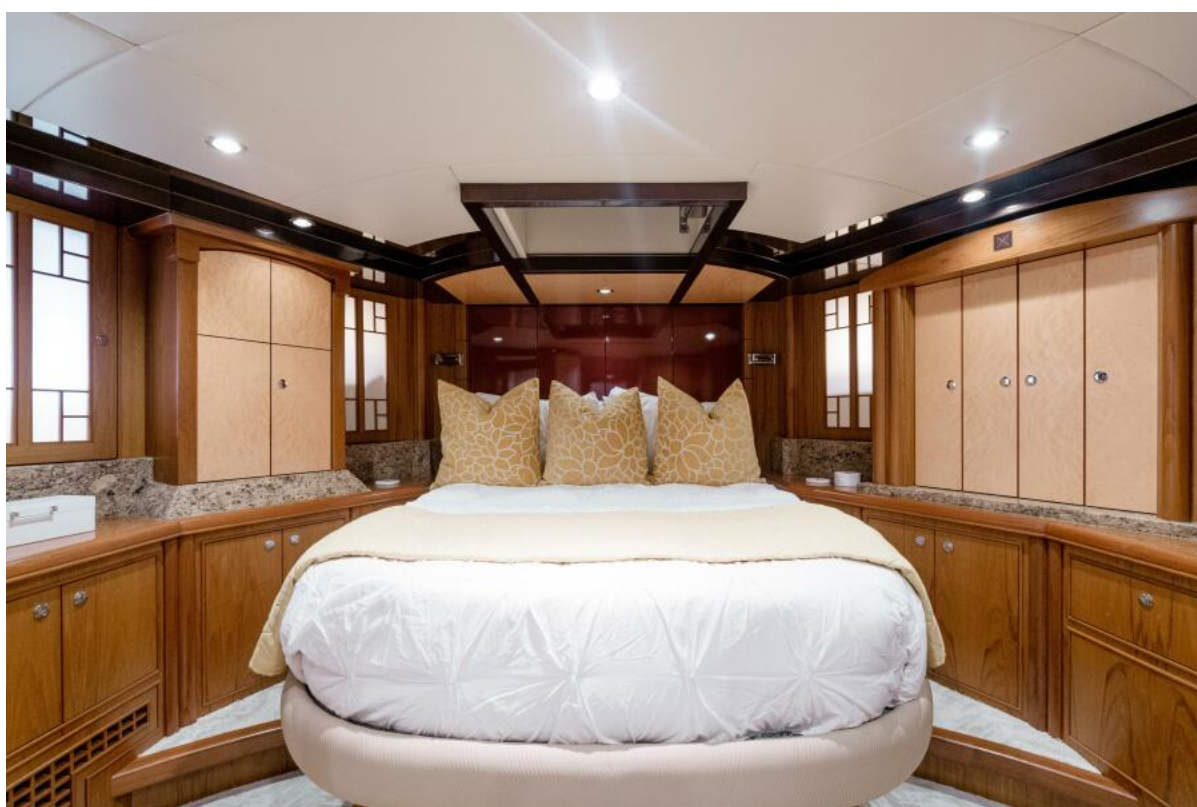
Galley Galley



Galley Galley



Galley Galley



VIP Cabin VIP Cabin



VIP Cabin VIP Cabin



VIP Cabin Ensuite VIP Cabin Ensuite



Starboard Guest Cabin Starboard Guest Cabin



Starboard Guest Cabin Ensuite Starboard Guest Cabin Ensuite



Study / Port Side Guest Cabin Study / Port Side Guest Cabin with Convertible berth



Study / Port Side Guest Cabin Study / Port Side Guest Cabin with Convertible berth



Study / Port Side Guest Cabin Study / Port Side Guest Cabin with Ensuite head



Study / Port Side Guest Cabin Study / Port Side Guest Cabin



Study / Port Side Guest Cabin Study / Port Side Guest Cabin with spare washer and dryer unit in closet



Master Cabin Master Cabin



Master Cabin Master Cabin



Master Cabin Master Cabin



Master Cabin Ensuite Master Cabin Ensuite



Master Cabin Ensuite Master Cabin Ensuite with Tub



Bridge Deck Bridge Deck



Bridge Deck Bridge Deck



Bridge Deck Bridge Deck



Sun Deck Sun Deck



Sun Deck Sun Deck



Sun Deck Sun Deck



Sun Deck Sun Deck



Crew Galley Euro Style Crew Galley with washer and dryer in cabinet



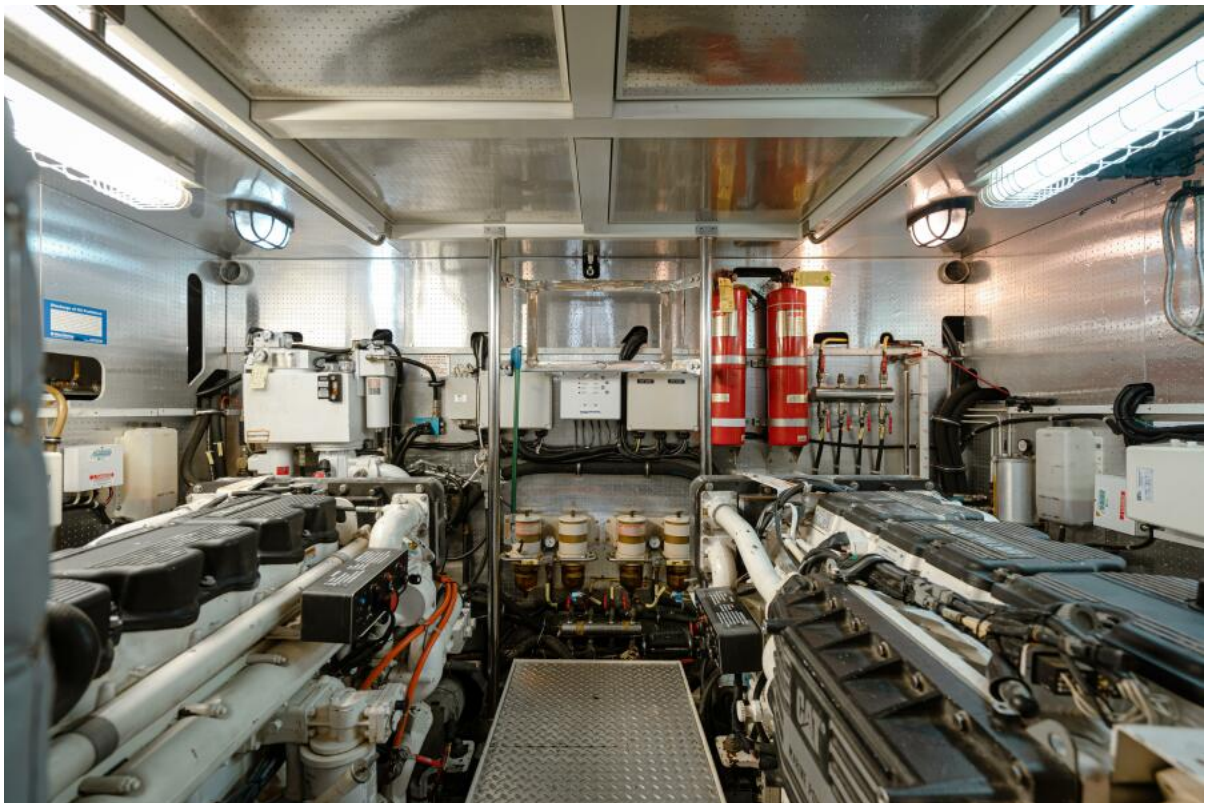
Crew Cabin Crew Cabin with single berth up top and double berth below



Crew Cabin Ensuite Crew Cabin Ensuite



Crew Cabin Ensuite Crew Cabin Ensuite



Engine Room Engine Room



Engine Room Engine Room



Engine Room Engine Room



Profile Profile



Profile Profile



Profile Profile



Profile Profile



Profile Profile