



FOREVER INTREPID

72' (21.95m) 2016 Ocean Alexander Pilothouse
Fort Lauderdale Florida United States



OVERVIEW

Manufacturer:	<i>Ocean Alexander</i>		
Engines:	2 CAT	Hull Material:	Fiberglass
Engine Model:	C18	Cruise Speed:	18 Knots
Engine HP:	1150	Max Speed:	24 Knots
Beam:	18' 10"	Cabins/Heads:	3 /
Max Draft:	5' 0"	Fuel Type:	Diesel
Water:	300 G (1135.62 L)	Fuel:	1500 G (5678.12 L)

\$2,695,000



Data Sheet

Category: Motor Yachts
Condition: Used
Model Year: 2016
Beam: 18'10" (5.74m)
Max Draft: 5' (1.52m)
LOA: 72' (21.95m)
LWL: 61' 1" (18.62m)
Cabins: 3
Sleeps: 6

Crew Cabins: 1
Crew Sleeps: 1
Maximum Speed: 24 Knots
Cruise Speed: 18 Knots
Range NM: 1875
Fuel Type: Diesel
Hull Material: Fiberglass

Displacement: 110000 lbs
Fuel Tank: 1500 gal (5678.12 liters)
Fresh Water: 300 gal (1135.62 liters)
Holding Tank: 100 gal (378.54 liters)
Builder: Ocean Alexander
HIN/IMO: OAX72118J516

Engines/Generators

Engine 1

CAT
C18
1150HP
857.56KW
Fuel: Diesel
Hours: 1369

Engine 2

CAT
C18
1150HP
857.56KW
Fuel: Diesel
Hours: 1369

Summary/Description

Motoryacht FOREVER INTREPID is a 72' / 21.95m luxury yacht for sale, built and launched by yacht builder Ocean Alexander. Delivered to a knowledgeable owner in 2016, this luxury vessel sleeps up to 6 guests in 3 staterooms and has accommodations for 1 crew.

Overview

One of Ocean Alexander's finest pilothouses. Outfitted and maintained to high standards. Spacious 3-cabin layout sleeps 6 guests, with a private Owner's stateroom entrance from the salon. Excellent crew quarters and ample storage aft. Country kitchen style galley with large granite countertops and wood cabinetry with stainless steel appliance package. Powered by twin Caterpillar C18 diesel engines with low hours and twin Kohler 23kW generators. Featuring bow and stern hydraulic thrusters and upgraded stabilization with oversize fins.

Key Features

- Complete Alexseal painted boat
- Bow and stern hydraulic thrusters
- Stabilized
- Remote control plugged aft deck
- Private owner's suite off the salon
- Well outfitted and well maintained

Construction

- Vinylester resin with marine-grade structural foam. High density allows for high-temperature resistivity and a particular advantage in thermal and acoustic insulation
- Reinforced collision bulkhead
- Fiberglass with infusion lamination manufacturing technology
- Elliptical 316 stainless steel handrails and stanchions
- All exterior hardware to be S/S 316 or to manufacturer requirements
- Ocean Alexander employs various techniques to reduce sound and vibration. Focusing on providing a quiet and comfortable yachting environment through various proprietary techniques of controlling sound and noise transmission
- Weather-tight bulkheads with further sound and temperature insulation
- Painted exterior surface with professional-grade Alexseal polyurethane paint and epoxy-based primers
- Marine-grade aluminum provides greater rigidity and a monolithic structure

- Use of cross-knit directional carbon fiber in high-stress area for added structural integrity and torsional strength
- Fiberglass staircase from cockpit to FB with teak steps
- Solid fiberglass hull bottom
- White vinyl rub rail S/S insert
- Bronze through-hull fittings

Interior

- Evan Marshall designed the interior pilot station and display pod with matching wood/Ultraleather and a “floating” display pod
- Wood paneling and cabinetry
- Stainless steel hardware
- Satin varnish for interior finish with countertops in high gloss
- Push-button handles for drawers and cupboards
- Fabric-covered walls for lower walkway walls
- Hanging lockers with dual locking mechanism
- Maytag washer/dryer
- Air extraction in each head shall be by low noise extraction fans, switched separately from lights
- Flip-up additional storage forward of dinette/under windshield
- Dedicated oversized drawer for golf club/sport rackets and bulky items storage under forward stateroom berth

Salon

- LCD 46” TV with A/V system
- One sub-woofer
- Wood valance board
- 24V LED lights
- Removable ceiling panel
- Granite countertop on TV counter
- Enlarged windows in salon with custom-engineered solution incorporating marine grade aluminum beams allowing for industry-leading window expanse. A/C outlet from the ceiling, provides an unobstructed view of outside
- Electric shades with remote control

Galley

- Granite countertops
- Wood panel and cabinetry
- Wood flooring
- Storage cabinets and drawers
- “Drawer type” shelves in large galley cabinet
- Elkay™ double sinks with pull-out faucet
- Overhead dish locker
- 15” Trash compactor
- 30” Jenn-Air electric oven
- Jenn-Air dishwasher
- 36” JennAir™ refrigerator
- 30" JennAir™ Over-the Range microwave
- 21-1/2” Kenyon electric cooktop
- Whirlpool™ garbage disposal
- Seagull water purifier

Pilothouse

- Custom manufactured thick-veneer wood flooring
- L-shaped dinette with chart drawer under
- Sunken and extended dash with instrumentation
- Wood tabletop with storage cabinet under
- Windshield defrosters
- Weather-tight pantograph doors to side deck
- One custom flip-up mechanical helm seat
- Custom-designed pilot station
- Pantograph windshield wipers and washers

Accommodations

Owner’s Stateroom

The owner stateroom’s king-size berth is an inviting oasis of comfort, with a deeply luxurious spa-quality mattress and upholstered headboard. A secluded entry for the owner’s suite puts an extra layer of privacy between you and everyone

else.

- LCD 46" TV
- DVD/CD audio stereo and video system
- One Sub-woofer
- King-sized berth
- Ultraleather-upholstered headboard
- Two nightstands with countertop
- Storage under bed
- Bureau with chest of drawers
- Granite countertop at TV cabinet
- Private head with large stall shower
- Safe in hanging locker
- Cedar-lined, full-height hanging locker with auto lighting
- Enlarged windows with custom engineered aluminum beams
- Electric shades with remote control

VIP Stateroom

- The forward VIP stateroom has a queen-size berth, an en-suite head, a shower, and concealed storage, including under-bed drawers. Its full-size cedar-lined hanging locker is quite spacious. An individual DVD/CD/stereo system and flat-screen TV.

Guest Stateroom

- Guest quarters are configured with upper/lower berths.

Crew Quarters

- Single berth
- Separate head
- Shower
- Sink

- Cedar closet

Navigational Equipment

- Garmin 8500 Series Black Box with 19" touch screen (two screens lower station, two screens upper station)
- Garmin GRID remote input device installed on helm chair
- Garmin 12KW open array radar
- Garmin autopilot GHC20
- Garmin VHF and card reader
- Garmin Blackbox sounder
- Garmin AIS with NMEA GPS
- Garmin MI 20 digital marine multi-display
- Garmin marine camera (two in engine room and one aft deck)
- KVH TracVision HD7 with DIRECTTV® receivers
- Ritchie compass 5"
- Sunken and extended dash with instrumentation

Deck Equipment

- Custom-designed flybridge with raised dining set for 8 guests
- Two custom flip-up mechanical helm seats on F/B
- Hydraulic 1500 lbs. davit
- Stainless steel plow type anchor 80 lbs. with 300ft anchor chain and chain stopper
- Chain counter
- Hands-free anchor chain wash system – allows for cleaning of chain during anchor operation
- Fresh water outlet with hose for engines and generators
- Fresh water wash down, at bow and stern and boat deck
- Dockside water connection

Electrical Equipment

- Heavy-duty batteries
- Battery paralleling system with control switch
- Service battery switch

- Engine battery isolation switches
- AC/ DC distribution panel with magnetic circuit breakers
- AGM batteries
- Electrical panel with backlighting
- Victron® 60 AMP charger for house bank
- Dedicated battery charger for start bank
- Bonding system with AC outlet throughout
- The vessel's bonding and grounding systems include copper straps secured to the hull and running the full length of the vessel parallel to centerline
- 24V LED lights
- International navigation lights
- Shore power receptacle with Iso-Boost 2x50AMP in transom with cable master
- VOLT and AMP meters

Mechanical Equipment

Engine Room

- Twin Caterpillar C18 1150HP diesel engine
- Engine hours: 1,369 Hours (April 2024)
- Two control stations: FB and PH, with complete engine instrumentation
- Electric engine controls
- Engine alarm system (oil and temperature)
- Intake/exhaust fans with de-mister to eliminate moisture from the intake airflow to keep dry in machinery spaces
- Adjustable/reversible Delta-T fans for engine exhaust
- Wet exhaust and including water temperature, oil pressure, hour meter and start/stop controls in engine room and remote start/ stop controls in the pilothouse
- S/S engine beds and S/S rail on side of engine
- Wired engine and thruster controller with aft deck and bridge plug in 25 ft cord

Generator

- Twin Kohler® 23 KW genset

- Generator hours: Starboard 1,158; Port 1,229 (April 2024)
- Generator with fuel/ water and gas/ water separator
- Generator set resiliently mounted and installed with sound shield and vibration dampener

Steering

- Hydraulic steering system
- S/S rudders
- Bronze struts with cutlass bearing
- High performance, computer-designed and machined class "S" propellers
- Dripless engine shaft seal logs and rudder posts

Windlass / Mooring

- Hydraulic windlass, VW3500C
- Stainless steel plow type anchor 80 lbs. with 300ft anchor chain (3/8" HT) and chain stopper
- Chain counter
- Hands-free anchor chain wash system – allows for cleaning of chain during anchor operation

Thrusters / Stabilizers

- Hydraulic bow thruster (25HP) and stern (15HP)
- Hydraulic Keypower® stabilizer (9 Sq. ft. x 2)

Air Conditioning

- Cruisair® systems throughout, rated for extreme tropical climates (with reverse cycle for operation down to 40F)
- Where possible A/C exits from custom made ceiling panels hidden from view. Shortens A/C ducting thus improving efficiency and speed of cooling by over 20%. Also reduces dB reading by over 7 dB

Plumbing

Fresh Water System

- 2mm thickness 316 S/S water tank with sight gauge
- Fresh water outlet with hose for engines and generators

- Fresh water wash down, at bow and stern and boat deck
- Dockside water connection
- One 40-gallon water heater with high-density fiberglass insulation with high-efficiency heating element

Fuel System

- Aluminum fuel tanks with sight gauges and with high and low fuel level alarm system
- Dual Racor® fuel/water separator with Y-valves for engine and generator
- Both side fillers for fuel tanks
- Exceeding industry safety standards with flame arrestor installed in fuel system
- Fuel system with venting and “catchment system” designed for burps or overflow accidents

Bilge System

- Common drainage system for bar sink, shower, bilge and exterior deck
- Bilge pump in forward and aft of engine room
- Automatic bilge pump with manual and automatic switches in each space as divided by weather-tight bulkheads
- High water alarms mounted in each of these bilge zones
- 24V shower sump pumps
- Dry bilge area arrangement in center of engine room
- Lighted bilge

Tender

- 14' Novurania tender with 60hp Yamaha
- Garmin chartplotter
- Fusion music system
- Underwater lights

Upgrades

- Crew quarters with separate head, shower, sink, cedar closet and single berth
- Custom-designed galley with open staircase to bridge
- Custom-designed salon

- Stabilizer fins upgraded to 9 sqft from 6sqft standard
- Doubled house batteries and extra Inverter with upgrade to double usable amp hours which allow for generator-free use on anchor
- New engine and genset batteries
- Upgraded 14' Novurania tender with 60hp Yamaha
- Upgraded stone countertops throughout
- Electric Stidd helm chair at inside helm station
- All helm chairs have upgraded stainless steel bases
- Electric Hunter Douglas shade throughout
- Cruisair air purification package
- Gulfcoast fuel polishing system
- Spreader lights for swim step and flybridge deck
- Phantom screens for salon and pilothouse doors
- 24" BBQ on flybridge
- Upgraded Garmin weather station
- Upgraded color Victron screen which enables usage monitoring from mobile device

Exclusions

All personal property is excluded unless specifically identified and included in the sale agreement and listing specifications. Personal property refers to all items not permanently attached to the vessel including but not limited to artwork, furnishings, and recreational or entertainment items. Advertisements, marketing materials, and/or other photography may depict the vessel with personal property, however, such personal property is excluded unless otherwise specifically included as provided herein.

- Kayaks
- Salon picture
- Personal equipment - detailed list can be provide

Disclaimer

The company offers the details of this vessel in good faith but cannot guarantee or warrant the accuracy of this information nor warrant the condition of the vessel. A buyer should instruct his agents, or his surveyors, to investigate such details as the buyer desires validated. This vessel is offered subject to prior sale, price change or withdrawal without notice.



Profile



Salon



Salon



Salon



Stairway to Flybridge



Galley



Galley



Galley / Pilothouse



Helm



Helm



Dinette



Dinette / Side Deck Door



Owner Stateroom



Owner Stateroom



Owner Stateroom



Owner Stateroom



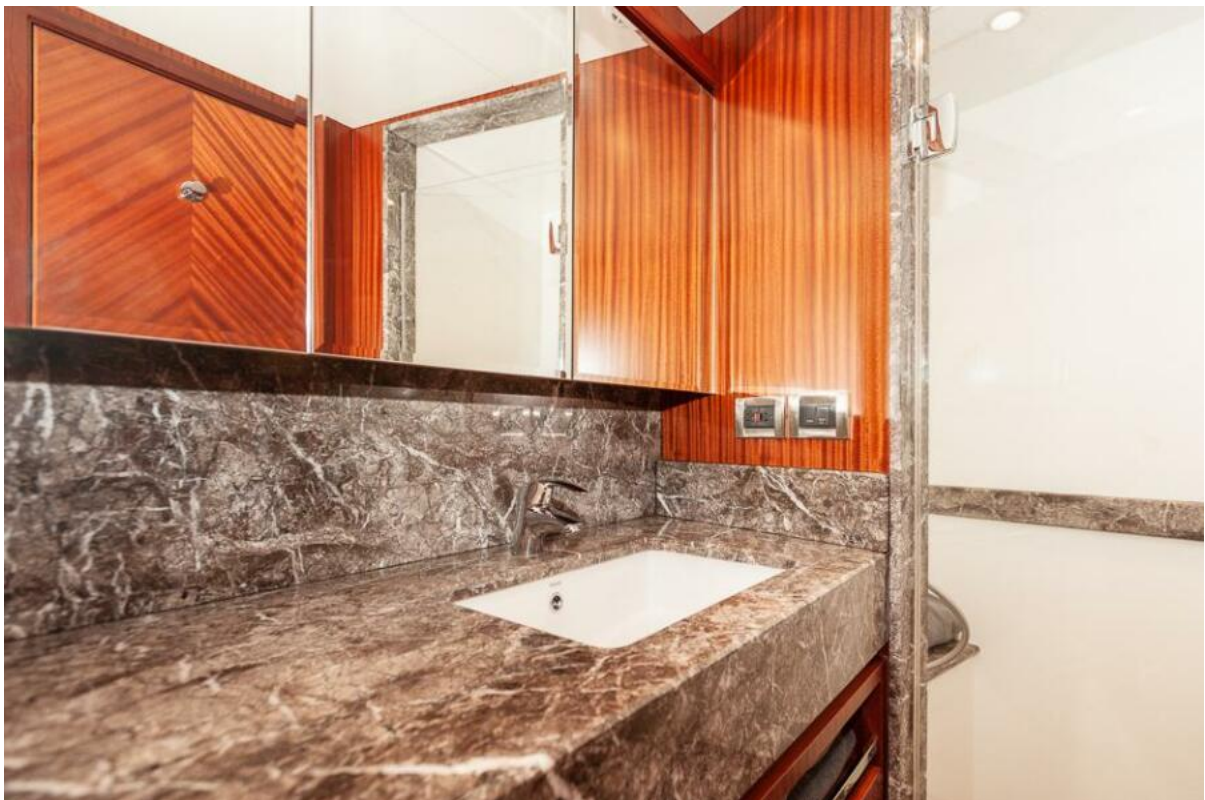
Owner Ensuite



VIP Stateroom



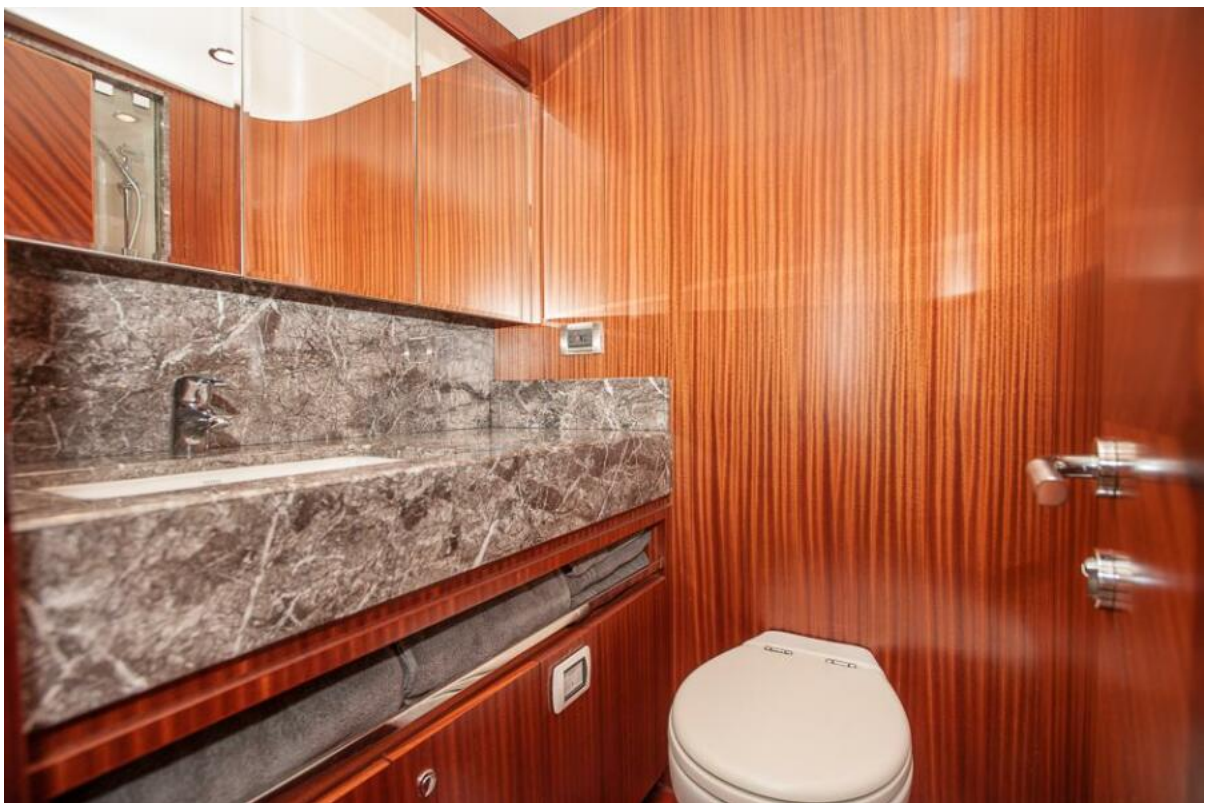
VIP Stateroom



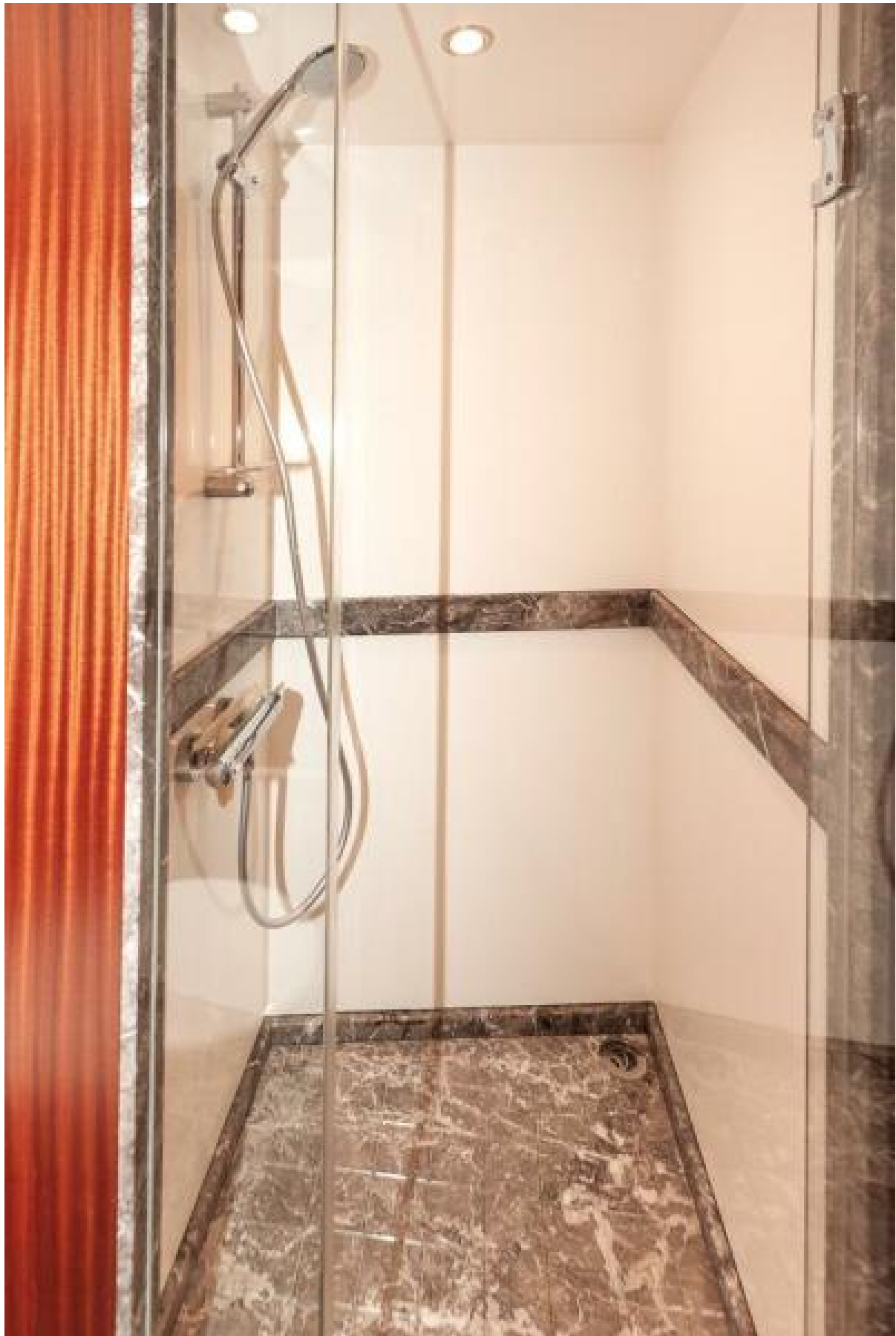
Guest Ensuite



Guest Stateroom



Guest Head



Guest Shower



Laundry Area



Flybridge



Flybridge



Flybridge Helm



Flybridge Helm



Flybridge BBQ



Boat Deck



Side Deck



Foredeck



Aft Deck



Aft Deck



Aft Deck



Engine Room



Engine Room



Engine Room



Engine Room



Lazarette



Crew Quarters



Crew Head



Lazarette / Crew Quarters



Port Profile



Starboard Bow Profile



Starboard Stern Profile



Port Profile



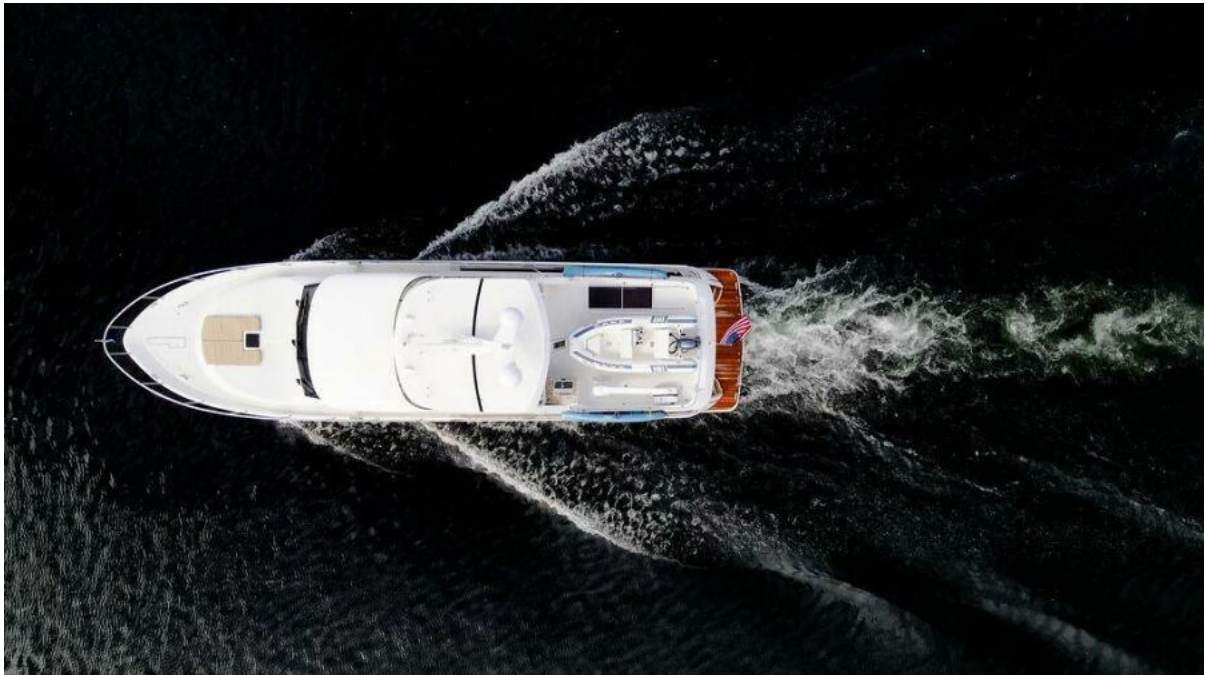
Underway



Underway



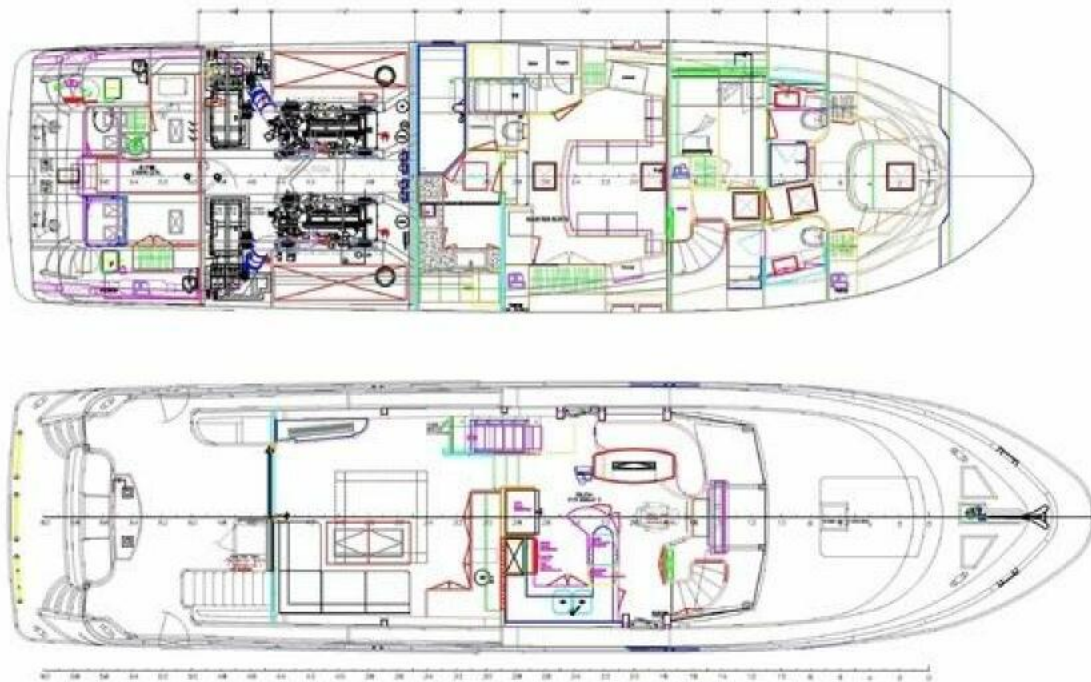
Underway



Aerial



Layout



Layout