



# Deo Juvante

62' (18.90m) 2018 Sunreef 62-ARC  
Virgin Gorda/Florida Virgin Islands (British)



## OVERVIEW

**\$1,699,000**

Manufacturer:	Sunreef	Hull Material:	Fiberglass
Engines:	2 Volvo	Cruise Speed:	
Engine Model:	D3	Max Speed:	
Engine HP:	110	Cabins/Heads:	3 / 3
Beam:	30' 2"	Fuel Type:	Diesel
Max Draft:	5' 8"	Fuel:	474 G (1794.28 L)
Water:	206 G (779.79 L)		



## Data Sheet

Category: Catamaran  
Condition: Used  
Model Year: 2018  
Beam: 30'2" (9.19m)  
Max Draft: 5' 8" (1.73m)  
LOA: 62' (18.90m)  
Cabins: 3  
Heads: 3

Fuel Type: Diesel  
Hull Material: Fiberglass  
Bridge Clearance: 90'

Displacement: 80200 lbs  
Fuel Tank: 474 gal (1794.28 liters)  
Fresh Water: 206 gal (779.79 liters)  
Holding Tank: 47 gal (177.91 liters)  
HIN/IMO: SRY62C47B718  
Stock #: B93374

## Engines/Generators

### Engine 1

Volvo  
D3  
110HP  
82.03KW  
Year: 2018

### Engine 2

Volvo  
D3  
110HP  
82.03KW  
Year: 2018

## Summary/Description

“Deo Juvante” is one of the newest catamarans and is the best kept Sunreef 62’ on the market. She has all the bells and whistles, with a huge flybridge with ample seating and a helm station.

**The newest and best condition Sunreef-62 you will find anywhere**

**Luxury catamaran with all the bells and whistles**

**Huge flybridge with lots of seating and helm station - all lines led to the helm electric winches for short handed operation**

**Separate interior instruments and controls**

**New - 10 x 200 AH Lithium Ion batteries - plus - solar and wind generators**

**Fully air conditioned, washing machine, water maker, commercial quality electronics**

**Large Salon with Galley “up”, Dinette, lounging area, Navigation center**

**Owner’s version - 3 cabins, 3 heads - 2 huge forward compartments can be outfitted as crew cabins - Owner’s cabin occupies nearly an entire hull**

**Recently completed a circumnavigation, and ready to cruise to any destination Can be purchased with Bitcoin or several other Crypto currencies**

**All serious offers considered**

**Contact listing broker for more information**

## Dimensions

- Length: 62 ft, 18.27 meter
- BEAM: 30 ft 2 in, 9.21 meter
- DRAFT: 5 ft 8 in, 1.75 meter
- DISPLACEMENT: 80,200 lbs, 36,400 kg
- BRIDGE CLEARANCE: 90 ft, 27.4 meter

TANKAGE:

- Fuel: 2 x 237gal, 2x900 ltr
- Water: 206 gal, 780 ltr
- Holding: 47 gal, 180 ltr

Engines: 2 x Volvo D3 110hp each (2500 hrs)

Generator - Onan 17.5 kw (2350 hrs)

Wind Generator – Silent Wind – x2

Solar – 4 x 150 watt

## Accommodations

Owner's version with:

- (3) cabins – (3) heads w/ showers
- All heads – w/fresh water electric toilets
- Incl: (3) Queen beds, (1) convertible Queen sofa bed

Master stateroom:

- Occupies most of Starbd hull
- Large Full bathroom
- Extensive storage
- New mattress 2023

Guest hull to Port :

- (1) VIP cabin aft w/ensuite bathroom
- (1) Guest cabin forward with separate bathroom(doubles as day head)

## Vessel walkthrough

Aft is the large cockpit with stairway to Flybridge. Salon is entered through sliding glass doors and is open and airy with large windows all around.

To Port is the spacious Galley. A serving counter separates the Galley from the rests of the salon. Dinette and lounge area is to Starboard.

Forward in the salon, below the forward window, is an inside Navigation area with full controls and instrumentation, and also an entertainment and communication center

Primary Owner's suite is in the Starboard Hull, with full head and shower. A few steps down from the salon.

Two Guest cabins occupy the Port Hull. Each with private head and shower. Forward head in the Port hull also serves as Day Head.

Wide side decks lead to forward deck with seating area and forward trampolines

Two large lockers are in the bows of the vessel and can be converted to crew or additional guest quarters

The Flybridge has it's main stairway from the cockpit, plus a secondary stairway from the forward deck

The primary helm station is on the Flybridge, with all control lines led to electric winches

There is also a spacious seating area aft of the helm with large central table

A Bimini top shades the helm and seating area.

Additional sun bathing space is aft of the seating area

## Salon & Galley

Salon:

- Salon contains: Galley to Port, Dinette and comfortable lounging area to Starbd,
- Forward countertop with full instrumentation and controls
- Large tinted windows for bright airy feeling w/360 degree view
- Retractable sun shades
- Modern/clean decor

Nav Station:

- Forward in Salon to Port
- Full instrumentation and engine controls

Galley:

- Large U-shaped Galley to Port w/extensive serving counter
- Galley located "UP" in Salon
- Stove - 4 burner LPG,
- Oven - Electric
- SS sink
- Refrigerator 220v
- Freezer 220v
- Microwave 220v
- Gas alarm - Auto shut off

## Electrical & Electronics

Electrical:

- Generator - Onan 17.5 kw (2350 hrs)
- Wind Generator - Silent Wind x (2) 24v/450 watt installed on Flybridge with Hybrid 1000 controller
- Solar Panels - 4 x 150 watt, 24v ( installed on Flybridge w/ Blue Solar MPPT 100/30 regulator
- House Batteries - Lithium, 10 x 200ah, Victron 12v ( LifePo Smart Lithium- New 2022)
- Engine Batteries - 2 x 100 ah 12v
- Generator battery - 1 x 100 ah 12v
- Bow thruster batteries - 8 x 100 ah 12v
- Battery chargers - (3) x 100 ah 12v ( separate charger for: house - engine/ generator - bow thruster, batteries
- Inverter - Victron 5,000 watt
- Shore power 220v 50/60 hz
- LED lighting throughout

Electronics:

- Full electronics at Flybridge helm as well as full electronics and engine controls at forward interior Nav station
- Samsung flat panel TV
- Redundant , Raymarine + NKE Wind, Depth, Log instruments
- Autopilot – (2) Raymarine, (1) NKE
- Radar – Raymarine
- Chart plotter – (2) x Raymarine
- GPS – (1) Raymarine, (1) Furuno
- AIS - Raymarine class A
- Music system – SONOS
- Radios – (2) Raymarine VHF, (1) handheld VHF
- SSB - Furuno SSB
- Satellite – (1) Inmarsat C system w/ distress button
- Sat Phone – Iridium Centus L Band 4300

## Mechanical

- Engine - 2 x Volvo D3 110hp each (diesel) (2500 hrs)
- Max speed under power – 10 kts
- Propeller – x 2 Flexofold 3 blade
- Steering – Hydraulic from Lecomble & Schmitt
- Bow Thrusters – Side Power x 2 ( motors service 2023)
- Water Maker 0- Sea Recovery 24v - 23 gph (90 lph)
- Air Conditioning
- Bow Thruster – 12v

## Plumbing

- Washing machine
- Hot water tanks - (2) x 21 gal ..... (2 x 180 ltr) – Quick water heaters, (1) in each hull

## Hull and Deck

- Hull and deck material – GRP (Fiberglass)
- Large vertical hull windows ( 12 windows for extra light into cabins)
- Large trampolines forward with solid divider
- Forward storage lockers
- High double life lines
- Flush deck hatches
- Additional stairs to forward part of cabin top and mast
- Hand holds along side decks

### Ground tackle:

- Anchor – ULTRA SS 145 lbs(65 kg )

- Chain - 230 ft ..... (70 meter)
- Windlass - Quick ( fully serviced 2023)
- Anti fouling - Stripped back to gelcoat and New antifouling system applied -2023
- Davits - Electric w/ remote control
- Fresh water deck wash
- Deck shower - Hot/Cold
- Full cockpit and flybridge cushion

#### **Flybridge:**

- Helm and guest seating
- Bimini -Black Sunbrella ( New 2023)
- Forward Bow Lockers (2)- Can be set up as crew cabins if needed
- storage for sails, fenders, lines spares
- Workshop set up in one forward bow compartment

#### **Cockpit:**

- Teak flooring
- Large dinette table
- Seating and lounge areas
- Stairs to Flybridge
- Stairs to swim platforms ( each hull)
- Aft deck to walk between hulls ( with supports for tender)
- Sunshades shield the cockpit or roll up when not needed

## **Sails and Rigging**

#### **Rigging:**

- Mast and boom - Carbon construction
- Park Avenue boom for sail storage
- Standing rigging - Dyform rigging ( inner shrouds - New 2021)
- Running backstays (2) - Dyneema
- Running rigging - Dyneema ( new 2023)
- Winches - (5) Electric Harken sheet/halyard , + (2) stern warping winches

#### **Sails:**

- Mainsail - (square top- fully battened) 1291 ft sq ... 120 meter sq
- Genoa and Staysail on Profurl fullers
- Parasail - (2)
- Spinnaker - (1) Asymmetric
- Screecher/Gennaker (1)
- Storm jib- (1)
- Sail bag - Black Sunbrella ( new 2023)

## Additional equipment

- Tender – Highfield Hypalon Ocean master 390 ( new 2021)
- Outboard – Mercury 4 stroke 40 hp ( New 2021)
- Fenders and Mooring lines

## Owners comments

-Our boat is a true long distance cruiser, she sails exceptionally well for a catamaran of this size especially at or below 90 degrees apparent. She's very fast even fully reefed (we got hailed a few times by cargo ships asking if we were participating in a race!). Even downwind we manage to sail - albeit slower - very comfortably with the just the Genoa up (reefed in lighter winds and we still manage 5 knots). The engines work very well too of course, I suppose we are purists!

Her battery capacity (10x 200ah lithium batteries) is excellent. We have met a lot of Sunreef owners and crew as well as many cats 60ft and above. All of them were constantly running their generators, a few had 2 generators. Our capacity between charges is 2-3 days. On top of that, we have solar and wind generators that help offset consumption to extend time in between charges. On average we run the generator 1.5-2 hours per days and that's mostly for convenience to run the aircon, washing machine, oven, making water. We essentially plan around using the oven and the washing machine because our battery capacity is so good. The comfort and silence at anchor is a true luxury.

We have improved performance yet all the luxuries of Sunreef, teak in the main shower room. The list goes on. We have 3 auto helms, 2 separate sets of instruments and networks for redundancy, a huge amount of commercial quality electronics (class A AIS, Furuno SSB etc.) We are a true blue water cruising yacht, upgraded to all Victron lithium and charging systems. We are cruising or at anchor 90% of the time, everything is optimized and reliable.

## Owner Exclusion

- All owner personal effects

## Disclaimer

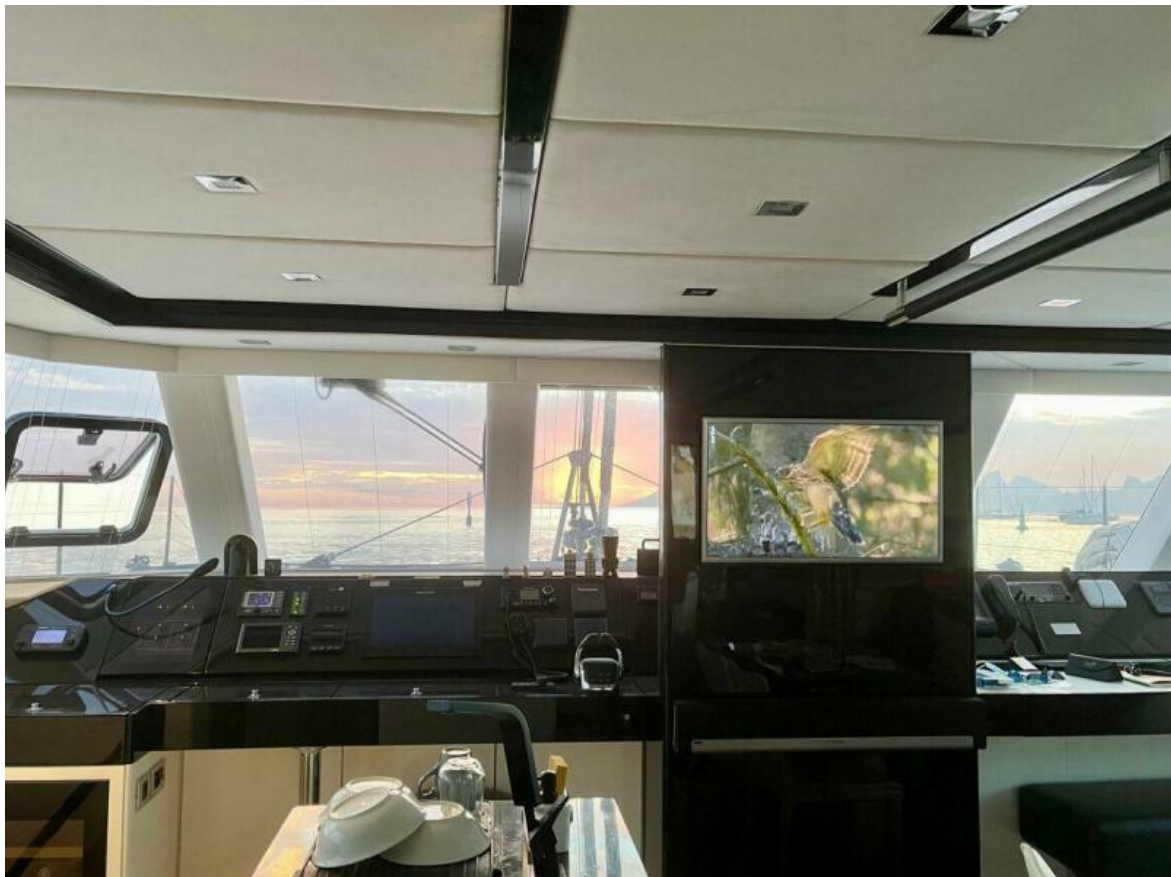
The company offers the details of this vessel in good faith but cannot guarantee or warrant the accuracy of this information nor warrant the condition of the vessel. A buyer should instruct his agents, or his surveyors, to investigate such details as the buyer desires validated. This vessel is offered subject to prior sale, price change or withdrawal without notice.





















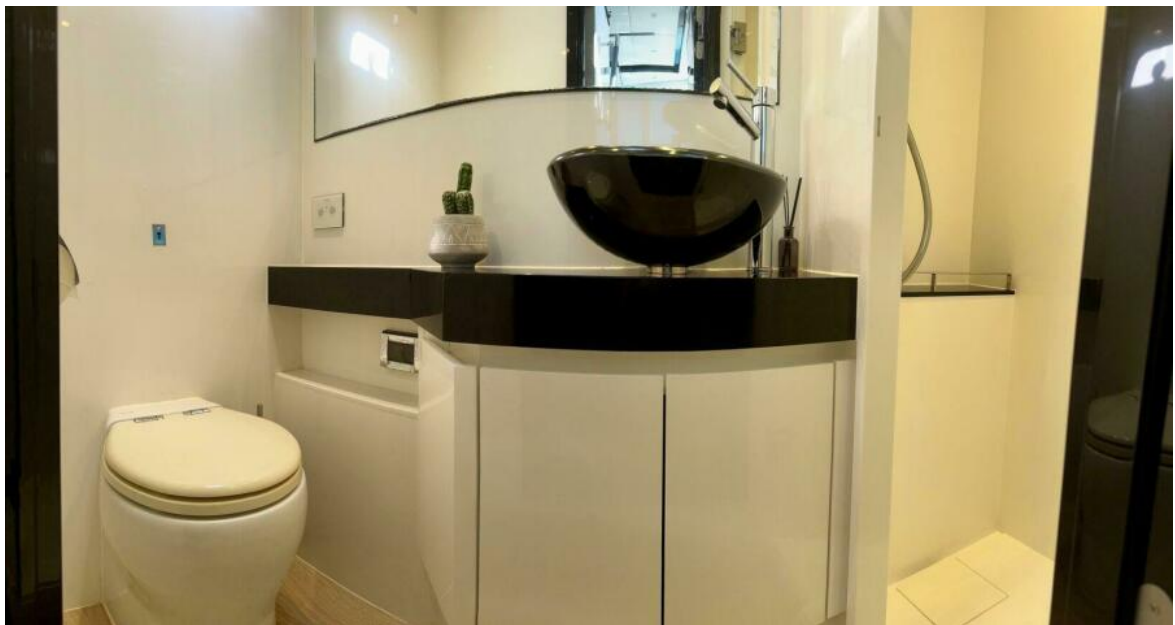


































































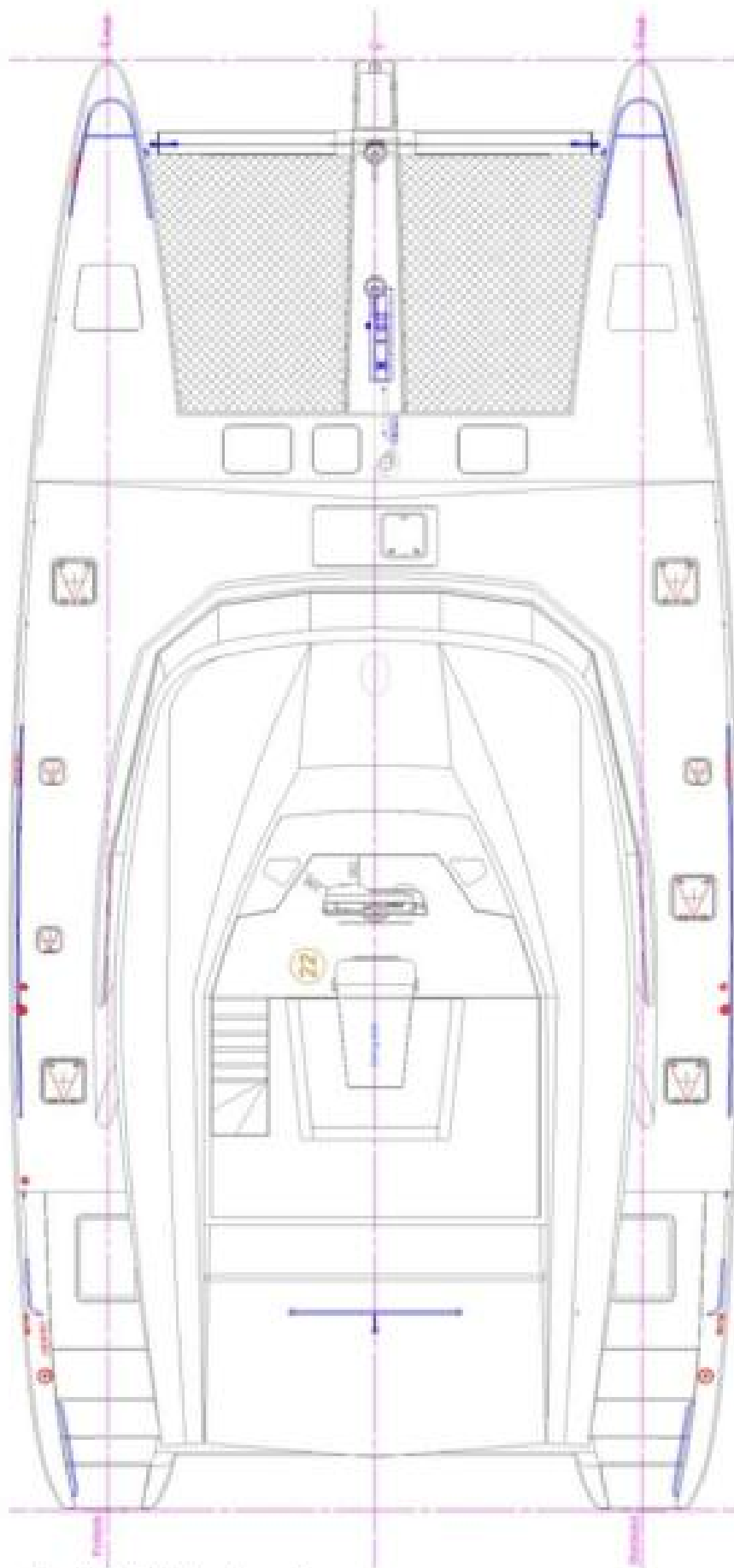












*Fig. 3. Flybridge layout.*

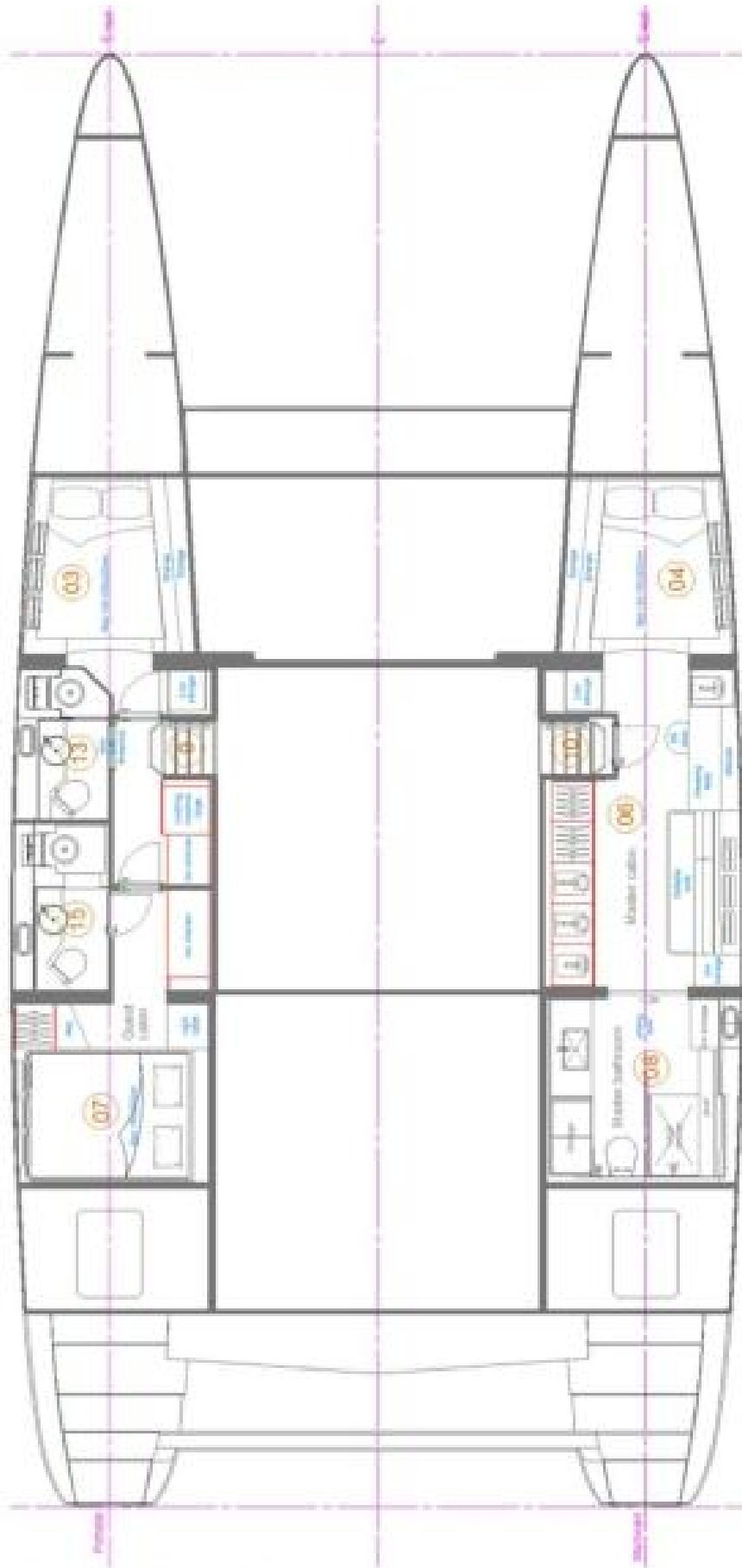


Fig. 2. Interior layout - hulls.



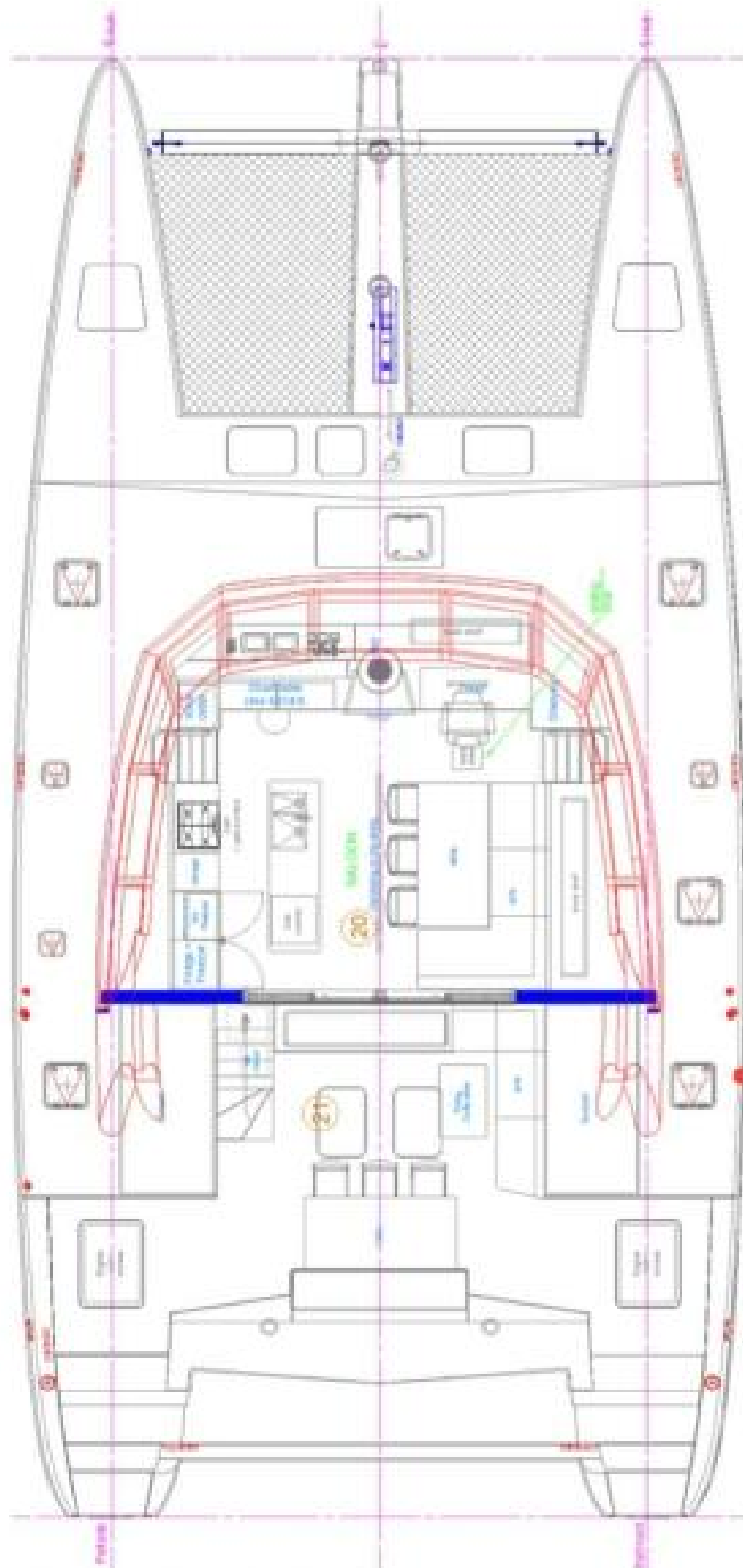


Fig. 1. Interior layout - main deck.