



HABITUAL LINE STEPPER

56' (17.07m) 2006 Neptunus Flybridge Motor Yacht
Ft. Lauderdale Florida United States



OVERVIEW

Manufacturer:	Neptunus		
Engines:	2 Caterpillar	Hull Material:	Fiberglass
Engine Model:	C-15	Cruise Speed:	25 Knots
Engine HP:	800	Max Speed:	29 Knots
Beam:	16' 2"	Cabins/Heads:	3 / 2
Max Draft:	4' 11"	Fuel Type:	Diesel
Water:	180 G (681.37 L)	Fuel:	820 G (3104.04 L)

\$474,000



Jeff Stanley jeff@gilmanyachts.com

1-954-249-0360

Data Sheet

Category: Motor Yachts
Condition: Used
Model Year: 2006
Beam: 16'2" (4.93m)
Max Draft: 4' 11" (1.50m)
Min Draft: 4' 9" (1.45m)
LOA: 56' (17.07m)
Cabins: 3
Sleeps: 6
Heads: 2

Maximum Speed: 29 Knots
Cruise Speed: 25 Knots
Fuel Type: Diesel
Hull Material: Fiberglass
Hull Shape: Deep Vee
Air Conditioning: Yes

Dry Weight: 55000 lbs
Bow Thruster: Yes
Stern Thruster: Yes
Fuel Tank: 820 gal (3104.04 liters)
Fresh Water: 180 gal (681.37 liters)
Holding Tank: 95 gal (359.61 liters)
Builder: Neptunus
Designer: Tony Castro
HIN/IMO: XVP5683FE606

Engines/Generators

Engine 1

Caterpillar
C-15
Inboard
800HP
596.56KW
Fuel: Diesel
Hours: 790
Hours Date: 07-19-2023
Year: 2006
Location: Port

Engine 2

Caterpillar
C-15
Inboard
800HP
596.56KW
Fuel: Diesel
Hours: 790
Hours Date: 07-19-2023
Year: 2006
Location: Starboard

Generator 1

Onan
17.50KW
Hours: 1010
Hours Date: 07/19/2023

Summary/Description

Price reduced to \$474,000. Seriously for sale!! HABITUAL LINE STEPPER has had only two owners. Being a 2006 model she has the vastly enlarged Flybridge and a full overhang for the Aft Deck seating. Very low time on her main engines. The Neptunus 56' Flybridge should be inspected by anyone looki

Vessel Walkthrough

The Neptunus 56' Flybridge offers three generous staterooms, two heads, a lower helm, on deck galley and sit down dining. With a generous use of high gloss cherry joinery, burlled countertops and buff vinyl wall panels the interior is gorgeous. Unique deck plans below deck, main deck and flybridge make the most of her 56' length.

Boarding is from the hydraulic platform on a floating dock or over the gunnels on a fixed dock. The aft deck is fully shaded by the flybridge overhead. There is both fixed and loose seating on the teak decking. A curved stainless steel entry door leads to a salon with an L-shaped couch to port and matching love seat to starboard.

Up two steps to the open port side galley and one more step to a dinette and lower helm station. Stairs from this area lead to the accommodations with the ensuite master amidships, a double berth cabin to starboard and a Queen VIP forward. To port is a shard second head.

The new style flybridge offers additional seating areas, a wet bar and an air conditioned helm.

Salon

Upon entering from the Aft Deck of the 56' Neptunus one finds a wide open Salon, Galley, Dinette and Helm area that blends together like no other mid 50' Sedan Cruiser. The high gloss cherry joinery, buff colored wall coverings and slightly contrasting overhead is breathtaking. To port is an L shaped settee with storage under upholstered in beige Ultra Leather. Two sets of new drapes cover the double windows both port and starboard.

To starboard is an identically upholstered two person curved loveseat. Forward is a cabinet housing the built in 32" Toshiba LCD TV, a huge improvement over earlier models.

Above is a cabinet with a Bose Lifestyle 48 entertainment center with AM/FM/CD/DVD changer, controls for the KVH TracVision, a SAT TV receiver and an attenuator for the Glomex TV antennae.

Forward are two steps up to the Galley. Aft is a sliding bug screen and full newly installed drapes for the curved stainless steel Trend entry door. Above are six dimmable halogen mini spots in soffits and two stereo speakers. Also in this area is a Bose subwoofer, digital A/C controls, a carpeted sole, central vac outlet, rope lighting, a custom cherry/burlwood coffee table and soffit delivery of the air conditioning air.

Galley

Galley is to port just forward of the Salon, is C shaped and is very well laid out for efficient use of space. Equipment as below.

- AEG 4 burner Ceran top 240V stovetop
- Sub Zero under counter refrigerator behind lacquered door to starboard
- AEG stainless steel built in oven (custom option)

- Under counter freezer behind lacquered door to starboard
- Double stainless under mount steel sink
- Panasonic microwave oven
- Exhaust blower
- Removable handle spray faucet
- Insinkerator food waste disposal
- Separate osmosis/filtered drinking water tap (New March 23)
- (15) High gloss cherry storage cabinets
- (2) High gloss cherry storage drawers
- (2) GFCI outlets
- (2) Under cabinet DC mini spots on a dimmer
- (5) Overhead mini spots
- Laminate cherry sole
- Avonite countertops

Dining

Just forward and open to the Galley is the curved dining settee. A unique high gloss cherry table folds in half for easy entry. The tan Ultra Leather upholstery settee easily seats four and could be the best seats in the house while underway. Placed all the way forward with 180 degrees of visibility the use of space is very impressive.

Two more A/C outlets are forward along with window defrosters and an inventive "Skylight" to the passageway below. The sole is laminated cherry to match the Galley.

Lower Helm

A two person Ultra Leather upholstered helm seat sits forward on the starboard side. The wrap around Helm features instruments and electronics mounted on high gloss burlwood joinery.

Five cherry cabinets below house the Maptech mainframe and storage.

Equipment includes:

- Furuno 12" NavNet 3D plotter/radar
- Fish finder option for Furuno
- (2) Caterpillar LCD gauge panels
- Simrad AP25 autopilot
- Icom M602 VHF with DSC
- Raymarine ST60 digital speed log
- Raymarine ST60 digital depth meter
- Vetus bow & stern thruster controls
- Fireboy fire system controls
- (3) Windshield wiper/washer controls
- Bennett trim tab controls
- CAT electronic clutch & throttle controls
- (4) Bilge pump switches
- Digital bilge pump counters
- 12 Volt accessory outlet
- Ritchie PowerDamp 5" compass
- Dino tilting wood helm wheel
- Hydraulic power assist steering

- Engine start/stop switches
- 2 cup holders

Companionway

From the starboard side just forward of the Salon is the curved seven step access to the lower accommodations. The yacht's electric panel is outboard of the steps along with an opening stainless steel porthole, a bookshelf, carpet runners and LED step lights. Customized when originally built, a Brother printer is mounted under a hinged panel below the porthole.

At the bottom of the landing in a cherry cabinet is the Whirlpool stacked Thin Twin Heavy Duty washer dryer unit. The cabinet is cedar lined and has a DC auto light. The carpet extends forward and up three steps to the two forward cabins. A cherry handrail with hidden rope lights, pin lights at the steps, the aforementioned skylight and DC mini spots are overhead.

Master Stateroom

The Master Suite is the first stateroom off the companionway. Through an arched top cherry door is the queen size berth on a 45 degree angle off the port aft corner for intelligent space utilization. Horizontal cherry strips between Ultra Leather vinyl panels give this cabin a distinctive look. The raised platform berth has rope lighting below, two storage drawers at the foot of the berth and an upholstered headboard set into a mirrored bulkhead. The mattress is Tempurpedic. Twin brass swing arm reading lights flank the berth. Built in cabinetry serves as his and hers nightstands. To starboard are six cherry drawers and one storage cabinet. Next outboard is an "almost" walk in hanging locker with cedar lighting, and a DC light.

At the foot of the berth is an upper cabinet with a built in 22" Toshiba LCD TV/DVD player and a lower cabinet with a drawer and two curved cabinet doors.

To port of the berth is one storage drawer, storage cuddy and two opening stainless steel portholes and full Roman shades. Cool air is delivered through the soffit evenly across the aft end of the cabin eliminating ugly vents and strong drafts.

Next forward is the ensuite Head. Also in this cabin are Bose stereo speakers linked to the main system and four dimmable halogen mini spots overhead. A dressing mirror is on the back side of the head door.

Master Head

Two steps up from the Master Cabin is the private Master Head with marble sole, mirrored overhead and a Raritan Atlantis head.

The cherry vanity has one curved storage cabinet below the bow front Corian countertop and an under mount sink with two tone sink faucet above. Above is an opening stainless steel porthole behind a Duette shade with rope lighting for accent. Above are four mirrored medicine cabinet doors and a mirror angled for perfect use.

The stall shower has a hinged clear glass door, a hand held or wall mountable Grohe fixture, a light, an exhaust fan and a grab rail.

Also in the Head are three overhead mini spots.

Starboard Guest Cabin

Next forward is the Starboard Guest Cabin featuring a unique double berth with innerspring mattress outboard with rope

lighting, one large and two smaller drawers beneath the berth facing centerline.

Inboard is a three drawer cherry nightstand with a brass swing arm light above. Over the berth is a halogen mini spot reading light and hinged access to the back of the Lower Helm Area. Above the berth are two opening stainless steel portholes with full Roman shades. Forward is a cedar lined hanging locker with auto light.

Also in this cabin are two stereo speakers with volume control, digital A/C controls, a 20" LCD Toshiba TV, a full dressing mirror, a central Vac outlet and four overhead halogen mini spots.

Guest Head

Located opposite the Starboard Guest Cabin and aft of the VIP is the Guest Head with marble sole, mirrored overhead and a Raritan Atlantis head. It has two access doors, one from the VIP and the other from the companionway allowing it to be the Day Head as well.

The cherry vanity has one curved storage cabinet below the bow front Corian countertop and an under mount sink with two tone sink faucet above. Above is an opening stainless steel porthole behind a Duette shade with rope lighting for accent. Above are three mirrored medicine cabinet doors and a mirror angled for perfect use.

The stall shower has a hinged clear glass door, a hand held or wall mountable Grohe fixture, a light, an exhaust fan and a grab rail.

Also in the head are three overhead mini spots.

VIP Cabin

The VIP Cabin is all the way forward and rivals many Master Cabins of similar sized yachts.

The queen size berth with innerspring mattress is off the forward mirrored bulkhead with an upholstered headboard below. Also below the berth are rope lights and two storage drawers facing aft. Above the berth is a Bomar escape hatch with screen or privacy cover for emergency escape and ventilation and two separate halogen mini spots as reading lights. To both port and starboard are seven cherry cabinets. Below are new Roman shades and rope lights with one opening stainless steel porthole on each side. Built in cabinetry form nightstands both port and starboard. Aft to port is access to the Guest Head.

Aft to starboard is a cedar lined hanging locker with auto light and a central vacuum outlet.

On the aft bulkhead is a cherry wood three drawer chest. Above is a built in 20" Toshiba LCD TV, a DVD player and a storage locker. Also in this cabin are eight dimmable overhead mini spots, two Bose stereo speakers linked with the main Bose unit, digital A/C controls and a hatch to the bow thruster area in the sole below.

Foredeck

- Fiberglass non-skid decks
- Stainless steel Delta Plow anchor with chain rode
- Lewmar Ocean series anchor windlass with up & down foot switches
- Bow roller & stainless steel anchor chute
- Chain locker hinged access hatch
- Welded stainless steel bow rails with stainless steel lifeline
- (3) Windshield wipers with washers
- International navigation lights

- Black Textulene windshield cover
- Side deck grab rails
- Port & starboard opening side gate in bow rail amidships
- Dual spring line cleats port & starboard
- Stainless burgee staff
- Round Bomar deck hatch to VIP
- Anchor wash down spigot
- Stainless steel vertical boarding ladder mounts port & starboard, stows in Lazarette
- Dark tinted frameless cabin side windows
- Signal horn
- 15 hp Vetus bow thruster
- Stainless steel handrails at bow sun area (no cushions)

Aft Deck

- Teak sole
- (7) Molded steps to flybridge with teak treads
- Storage locker under flybridge steps
- 4 person seat across transom with upholstered cushions & cover
- Engine room access via hatch in aft seat
- 3 section cherry table in front of seating with hinged center section & twin stainless steel pedestals & cover
- Port & starboard hinged stainless steel boarding gates to swim platform
- Bar sink under hinged top with Miele electric BBQ & storage below to starboard
- BCM hydraulic swim platform with 750 lb. capacity with tender tie downs & teak decking
- LED Step lights to Flybridge
- Port & starboard steps to swim platform with teak treads
- Port & starboard molded steps with teak treads to side decks
- LED step lights to side deck
- (3) Stainless steel overhead DC aft deck lights w/LED bulbs
- Removable service hatch to engine room
- Trend curved stainless steel entry door with dark tinted glass
- Port & starboard lockers to access cleats
- Hot & cold shower in starboard cleat locker
- Shore water connection with pressure regulator in port cleat locker
- Aft Cockpit sun shade
- (2) Stereo speakers JL audio 2 stage
- Clarion remote for stereo
- Hinged cover to flybridge steps
- (2) folding deck chairs

Flybridge

- Teak laid decks
- Helm to starboard
- Unique sun lounge cushions forward of helm
- Tinted Venturi windscreen
- Flybridge bar with stainless steel sink, U Line refrigerator with icemaker (Fridge new Jan 2021)
- (2) Upholstered adjustable helm chairs with storage below
- (2) Blue Stamoid helm seat covers
- C Shaped flybridge seating with removable cushions & storage below to seat six
- Blue Stamoid seating covers

- Varnished cherry folding table on stainless steel pedestals
- Fiberglass radar arch type support to Neptunus new style fiberglass hardtop
- Blue LED deck lighting
- Glomex TV antenna
- (2) Cup holders at Helm
- (4) Stereo speakers (2 stage)
- Red overhead night light at helm
- Hinged cover to aft deck steps with stainless steel safety rail
- Portside wing controls under fiberglass cover with start/stop, engine controls & bow and stern thruster controls
- Stainless steel tilting Helm wheel
- Dark burlwood dash
- Marine Air heat & air conditioning with digital controls
- Full 4 side clear vinyl enclosure
- (6) overhead lights w/LED bulbs

Flybridge Electronics

- Simrad AP25 autopilot repeater with wired remote
- Furuno NavNet 3D plotter/radar with fish finder option
- Garmin GPSMAP 8616 plotter (Jan 2021)
- Raymarine ST60 depth sounder repeater
- Raymarine ST60 speed log repeater
- Ritchie SS2000 5" magnetic compass
- (2) Caterpillar LCD gauge panels
- Fireboy fire system controls
- (2) Wema electric fuel gauges
- Bilge pump alarm indicator panel
- Bennett trim tab controls
- Start stop switches with keys
- Vetus bow & stern thruster controls
- Teak footrest
- Clarion AM/FM/CD stereo
- Caterpillar electronic controls for clutch & throttle
- Icom M602 VHF
- Hydraulic power assist steering
- Air horn
- Windlass up & down switches
- Remote for Clarion stereo
- Caterpillar emergency engine control panel
- Jabsco ITT searchlight controls
- A/C vents
- USB outlet
- KVH HD7 SAT TV system

Lazarette

- Four step stainless and teak vertical boarding ladder

- 5 Step stainless & teak ladder from aft deck
- DC incandescent lighting
- AC fluorescent lighting
- Hydraulic power pack for swim platform
- Rudder gear
- Watermakers Inc watermaker with 2 membranes (Jan 2021)

Electrical System

- 12/24 volt DC electrical system
- 110/220 volt AC electrical system
- 17.5 kW Onan generator in sound shield (1010 hours as of July 19, 2023)
- (2) 8D 12V batteries-Odyssey AGM (Jan 2021)
- (3) 4D 12V batteries-Odyssey AGM (Jan 2021)
- 220 volt 50 amp Glendinning cable master with 60' cord in starboard cleat locker
- Victron 24V 30 amp battery charger
- Victron 12V 100 amp battery charger
- Rex manufacturing 15 KVA isolation transformer
- LED DC volt meter
- LED AC volt meter
- LED DC amp meters
- LED AC amp meter
- Cable TV/telephone inlets with 50' cords in starboard cleat locker
- Neptunus DC panel with 42 circuits with indicator lights
- Neptunus 110V panel with 16 circuits with indicator lights
- Neptunus 220V panel with 8 double pole circuits with indicator lights
- Glomex TV antenna gain control
- A/B Antenna switch
- Quicksilver galvanic isolator
- Fully bonded
- 2500 watt inverter with remote panel
- (4) New GFCI's in electric locker (May 21)

Engine Room

- (2) Racor 1000 MA fuel filters
- ZF V drives, MG 5114, 2.05 to 1 ratio
- "Strong" dripless shaft seals with mounted spares
- 2 ½" Stainless steel shafts
- 4 Blade bronze props
- Dual actuator Bennett trim tabs
- 15 HP Vetus bow thruster
- 10 HP Vetus stern thruster
- Oil Xchanger 5 Point oil change system for mains, transmissions & generator
- (1) 48,000 BTU Cruisair variable speed chiller (chilled water) - (New Sept 2021)
- 25 Gallon hot water heater
- Airsep crankcase ventilation system

- Water tank electric gauge
- Waste tank electric gauge new sender (8/06)
- (2) Coolant recovery bottles for main engines
- Coolant recovery bottle for generator
- Teleflex Sea Star power steering system
- Racor 500 fuel filter for generator
- Groco 3" main engine intake strainers with ball valves
- AC fluorescent lighting
- DC incandescent lighting
- 110V fresh water pump
- Expansion tank for water system
- Shaft brushes for bonding
- Fireboy Halon fire system with override
- (2) engine room blowers
- Heavy Duty engine room door with window
- Air intake filters
- (4) Rule bilge pumps, (3) with counters
- De Angelo (Ft. Lauderdale) hard coated stainless steel risers
- Macerator pump with timer
- Heavy Duty engine room insulation with perforated aluminum plate
- Engine Room deck lifted to clean drains (June 2022)
- New impellers mains and generators (Jan 2021)
- All (28) new thru-hulls (Jan 2021)
- Rebuilt rams on hydraulic platform (Jan 2021)
- New hydraulic hoses on hydraulic platform (Jan 2021)
- New pump for hydraulic platform (Sept 2021)

Construction Details

Solid hull below waterline, cored hull sides, 19.5 degree deadrise. Fast, efficient hull form.

Remarks

The Neptunus 56' Flybridge should be inspected by anyone looking for a sleek Euro style Sedan Cruiser. This model offers sleek lines, great speeds and "North American" sized berths, spaces and designs.

Perhaps the most important feature of this boat is that virtually all of her systems are North American built, parts easily obtained and familiar to the American market.

HABITUAL LINE STEPPER has had only two owners. Being a 2006 model she has the vastly enlarged Flybridge and a full overhang for the Aft Deck seating. Very low time on her main engines!

Exclusions

While every effort was made to list all pertinent included equipment aboard **HABITUAL LINE STEPPER**, there are some personal belongings aboard. Prospective purchasers should assume any item not specifically mentioned herein will not convey at closing.

Disclaimer

The company offers the details of this vessel in good faith but cannot guarantee or warrant the accuracy of this information nor warrant the condition of the vessel. A buyer should instruct his agents, or his surveyors, to investigate such details as the buyer desires validated. This vessel is offered subject to prior sale, price change or withdrawal without notice.



Profile



Salon Looking Forward



Salon To Port



Salon To Starboard



Salon TV



Salon Looking Aft



Salon Looking Aft



Galley



Galley



Galley



Optional Oven



Refrigerator



Dual Sink With Osmosis Tap



Microwave



Freezer



Dining Table



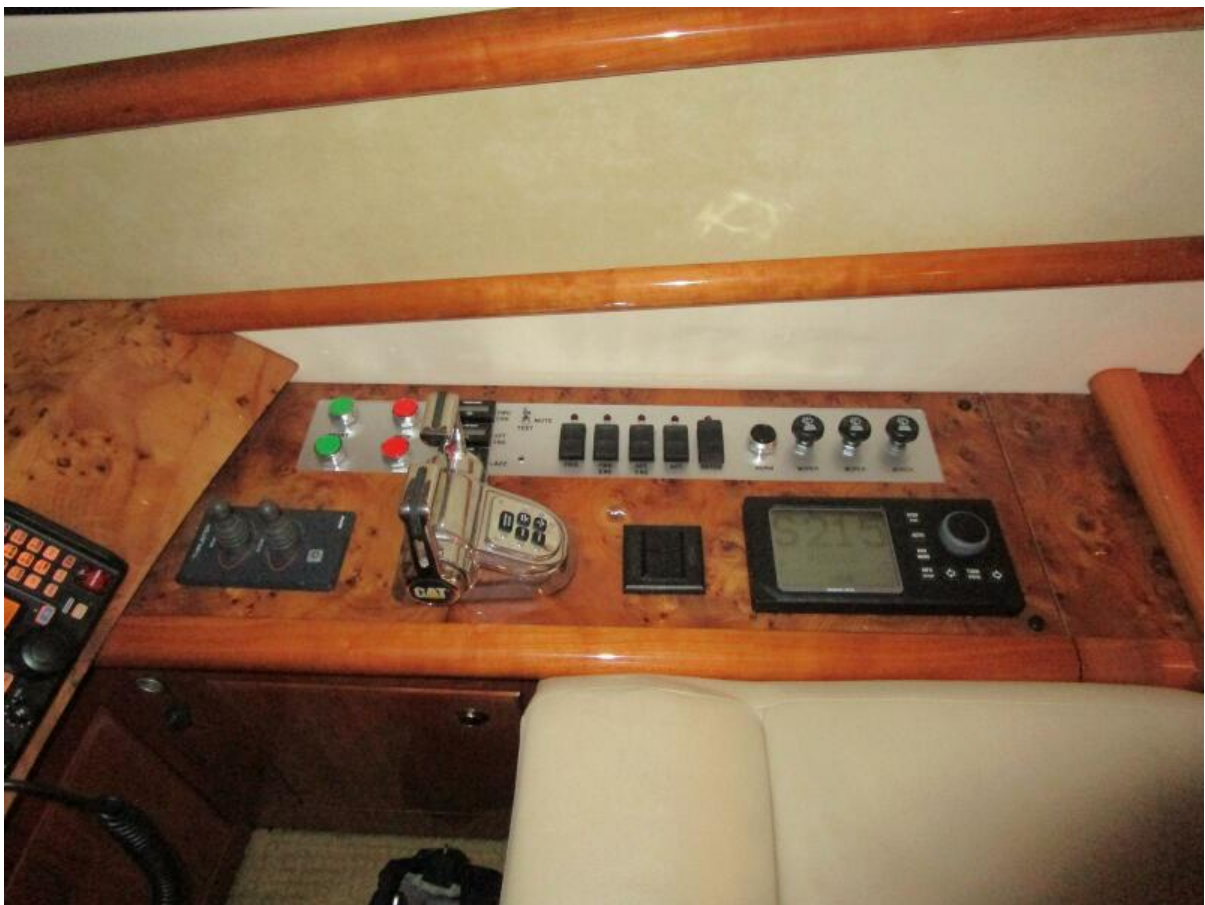
Dining Table Folded



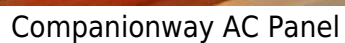
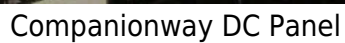
Lower Helm



Lower Helm Dash



Lower Helm Outboard





Companionway Laundry



Guest Companionway



Master Cabin



Master To Stbd.



Master To Port



Master Vanity



Master Head



Master Shower



Guest Cabin Looking Aft



Guest Cabin Looking Forward



Guest Head



Guest Head



VIP



VIP To Stbd.



Bow



Bow



Bow



Windlass Detail



Front Enclosure



Side Deck



Aft Deck



Flybridge Steps



Aft Deck



Steps To Flybridge



Flybridge Starboard Side



Flybridge Port Side



Flybridge Bar



Flybridge Looking Forward



Forward Exterior Seating



Port Side Wing Station



Helm Area



Helm Seat



Helm Detail



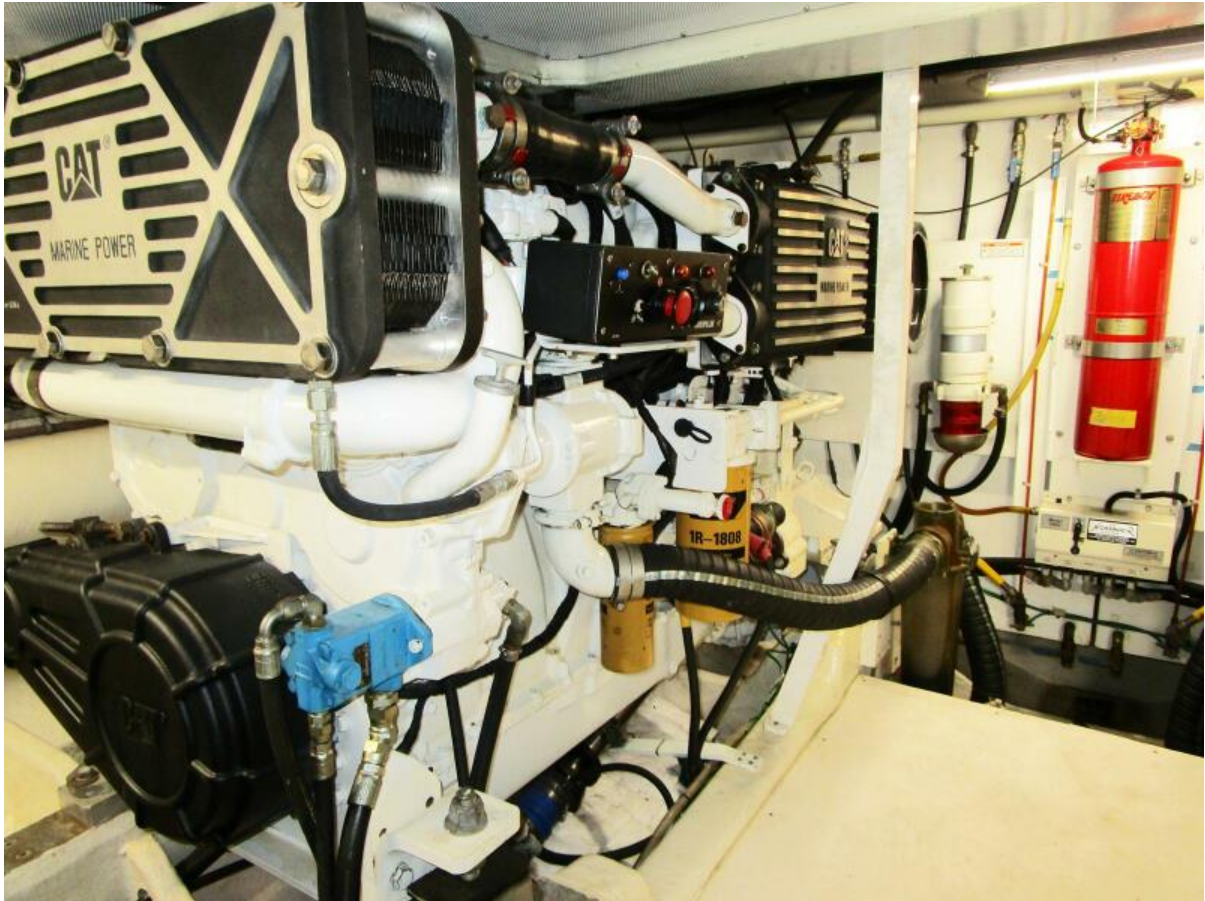
Helm Detail



New Laz Watermaker



Laz To Stbd.



Port Engine



Center Of Engine Room



Stbd. Engine



New A/C Chiller



Generator



Bow Quarter



Alternate Profile



Alt Profile



Stern Quarter



Transom