



HOUBARA

82' (24.99m) 2012 Sunreef Sunreef 82 DD
Cannes France



OVERVIEW

€3,104,000

Manufacturer:	Sunreef	Hull Material:	FRP
Engines:	1 Cummins	Cruise Speed:	
Engine Model:	QSB 5.9	Max Speed:	
Engine HP:	0	Cabins/Heads:	/
Beam:	37' 0"	Fuel Type:	Other
Max Draft:	6' 6"	Fuel:	2 G (0 L)
Water:	2 G (0 L)		



Staley Weidman staley@catamarans.com

954-449-4654

Data Sheet

Category: Catamaran

Condition: Used

Model Year: 2012

Beam: 37' Max Draft: 6' 6" Min Draft: 6'

6" LOA: 82' (24.99m)

Fuel Type: Other

Hull Material: FRP

Bridge Clearance: 112'

Displacement: 58 tonnes

Fuel Tank: 2 gal Fresh Water: 2 gal

HIN/IMO: SRY82C01G212

Stock #: 799630

Engines/Generators

Engine 1

Cummins

QSB 5.9

Fuel: Other

Hours: 4400

Summary/Description

Used Sail Catamaran for sale

Following the successful launch of two mega catamarans over 100 feet each in 2010, the Sunreef shipyard has been designated as a builder of an 82ft double decker sailing catamaran with the latest design, featuring sleek hulls and a streamlined deckhouse topped with a giant 35m2 flybridge inspired by large superyachts. Houbara has just received a complete technical and exterior refit including, engine and gen servicing, rig and boom removal painting and inspections, bottom painting, propeller service, top side painting now a darker brown color

Layout & Accommodations

The owner suite, arranged over two floors, is set to occupy the entire forward section of the yacht with a master cabin, Jacuzzi and vanity on the main deck, and wardrobe and floor-to-ceiling storage and bathroom located below decks in port and starboard hulls respectively.

One Master in the front with a bathroom and a large dressing

Owner cabin

- A queen size bed 2.00 x 1.80 m with storage underbed and access doors
- 2 night tables with bedside lamps
- Floor with carpet (high quality)
- Jacuzzi Victory Spa, Bora Bora
- Countertop and lockers under the windscreen
- Cupboards
- TV locker + TV LCD 50" and home cinema
- Stairs for access on port to the owner bath room and on starboard to the dressing

Safe METALKAS TG1SL Classic, dimensions 265*405*300 en mm

FLYBRIDGE

- Steering post with instruments console
- Navigation seat
- Small kitchen with bar, fridge, ice maker and cupboard
- U shape sofa with table
- 2 Armchairs Triconfort Rivage (Dining Armchairs)
- 2 Deckchairs Triconfort Rivage multiposition + footrest + 2 deckchairs Triconfort Rivage
- Saloon, with upper saloon, and a bar
- Saloon divided into :
 - a lower saloon, with coffee table, large bar
 - an upper saloon for TV watching
 - a interior navigation station raised

From front to back

- on port , Owner bathroom
- Double bed guest cabin with its own bathroom
- Aft , guest cabin with two single beds and its own bathroom that could be used as a Day head for invitees.

On starboard,

- Owner dressing room with direct access to Owner suite
- Large kitchen , very well insulated from dressing
- aft, crew cabin with two single beds and its own bathroom

Guests cabins: one double bed with bathroom + one with 2 single beds and bathroom.
double bed crew cabin

Galley

Large Kitchen

Lower kitchen

- 1 freezer under the floor Electrolux ECO22212W (216L)
- 1 fridge SIEMENS KS38RV73EU (355L)
- 1 Freezer SIEMENS GS32NV73EU (244L)

Bar

- 1 fridge with small freezer , SIEMENS KI18LA50FF (117L + 17L)
- Ice maker Vitrifrigo Classic Refill 11kg/24h
- 1 wine cellar 32 bouteilles Beaumatic BW28

Trash storage

In a temperature controlled locker

- Countertop with double sinks in Corian with electric macerator ISE65 InSinkErator and mixing taps
- Lockers under the sinks with shelves
- Cook top mixte gaz/electricity (3 fires): SCHOLTES TV 631 E (BK) GH with SS system to block the pans and electric oven MIELE H5140 BP

Gaz bottles stored outside in a ventilated locker, alimentation with rigid copper pipe

- Dish washer MIELE G 1173 Vi
- Microwave inox LG MP- 9485SL
- Hob Amica OKC 95131**
- Trash compactor InSinkErator 8251 SS
- Table for crew lunches, stools, the table would be used for ironing
- Vertical locker for top to bottom
- Stair for access to saloon
- Washing machine MIELE W 2819 i and Dryer MIELE T 7644
- Large locker for linens
- Fridge equipment (see paragraph Refrigeration)

Deck & Equipment

Winches : HARKEN

Swimming ladder, (Custom Sunreef in SS 316L) , movable on each stern for access to the sea

Gangway, 1 x retractable hydraulic gangway (Berenzoni)

Side ladders, (custom Sunreef in SS) is fixed on the railway on each side.

Sliding door, A 4 parts Opacmare sliding door

A galvanized chain of 120m long and 16 mm diameter with a Spade 100kg anchor.

second (safety) mooring line includes 80 m of galvanized chain of 13 mm diameter, a FOB anchor of 90 kg and a spring line of 50 m, diameter 28mm.

Anchors, one anchor type spade 100kg , second anchor type FOB 90kg

Capstans, 2 electrical capstans QUICK 2 300 W/24V in the stern of the Yacht.

Tender lifting system

2 Telescopic arms located inside the flybridge allow the lift of the tender and its storage on the aftplatform.

A large central locker in the cockpit for storage of a Jet ski

Bar Flybridge

DIVING EQUIPMENT

Diving compressor

Bauer JUNIOR II-W, filling rate 2mn/L de 0 à 200 Bars and rack for 3 bottles 15L

Tender , ZODIAC 550 MEDLINE NEO, with a Mercury 80hp outboard engine + following equipments : SS cradle, slings,ski mast, bimini, sunmastresses, shower and cover.

- 1 fridge Vitrifrigo C90 i (87L)+ Ice maker Vitrifrigo Classic Refill 11kg/24h

JET SKI

- Brand : SEA DOO RXT 255
- Power : 275 hp
- large cockpit table
- sunbathes
- New windlasses-Aug 2018
- New main chain- Aug 2018
- All new teak deck

Flybridge windscreens have been replaced Jan 2024

Electronics & Navigation

Integrated system of navigation instruments GARMIN and compatible communication system with the Garmin systems

All electronic equipment NEW in 2016

Exterior steering station

- Compas
- Screen 15" serie 7 Garmin GPSMAP 6212
- Fishfinder 300 C Garmin
- Screens (3) multifonction GMI 10 Garmin for speedo, loch, anemometer/windvane
- Anemometer/windvane GWS 10 Garmin
- Automatic pilot command GHP 10 Garmin
- VHF 300i Garmin with active loud speaker
- Deck light command
- Fog Horn command
- Control screen for Alarms Navylec
- Monitoring screen SmartCraft for Cummins engines and Onan generators

Inside navigation station

- Compas
- Screen 15" serie 7 Garmin GPSMAP 7215
- Screens (3) multifonction GMI 10 Garmin for soundeur, loch, anemometer/windvane
- Receiver GPS 17HVS, 12 channels
- Digital Radar GMR 18HD Garmin 4kw, range 36 miles
- Connexion in between the navigation instruments and the computer
- Transfert of navigation informations on the TV screen in the saloon
- VHF 300 i Garmin
- VHF 300i Garmin with active loud speaker
- Auto pilot GHP 10 Garmin and GHC 10
- Remote command for auto pilot
- Remote command for engines and windlasses (Yacht Controler)
- Barometer and chronometer
- 2 Marine Garmin GC 10 cameras with automatical infra red on the spreaders and in the cockpit
- 2 control screens for Navylec alarms
- Screen for Monitoring SmartCraft for Cummins engines and Onan generators

Telephone

- Satellite KVH V7
- Navtex 700 A

Monitoring and alarms

The Yacht is equipped of a monitoring system from Navylec to control :

ALARMS :

- Bilge pumps
- Engine rooms temperature and exhaust temperature

- Batteries
- Grey and black water levels

ELECTRONIC FOR LEISURE

- Satellite antennae TV KVH M5
 - TV connection cables in all cabins for later TV installation
 - TV LCD 50" in the upper saloon, new 2017
 - TV LCD 50" in the owner cabin , new 2017
 - TV LCD 26" in the kitchen and a TV set in the crew cabin with a CD reader
 - Connection cable in between inside navigation station and TV sets of saloon and owner cabin with cable RJ45-categorie 6
 - Armchair Berenzoni P216 Président
- All new Garmin electronics. Jan. 2024

Electrical, Power & Plumbing

New house batteries (12) Master Volt 6V 400Ah each, Jan 2022

Electric windlasses, A electric windlass QUICK of 3500 w/24V , A second electric windlass QUICK of 3500 w/24V

Two watermakers SEA RECOVERY, one Ultra Whisper Compact 400 60L/h 24V and one Aquamatic 700-1 L/h 220 V

The fresh water tanks (4) in Polythène . Their volume are appro. 1 560 L total.

Plus 1 more 1 000L tank in each hull

Fresh water distribution outside

- deck showers on port and starboard, located on sterns
- outlets for washing at mast step, on flybridge and in the cockpit
- outlet for rinsing before winterage of main engines

WATERHEATER

On port side, a water heater QUICK BX 801-2S, capacity 80L, pressure 800 Kpa,

- On starboard side, 2 water heaters QUICK, one of 100L , one of 60L

Grey water tanks,one in each hull, capacity 335L.

Black waters, All toilets are connected to a black water tank.

Black water tanks, a black water tank of 335L in the port hull

STEERING SYSTEM

- 2 hydraulic rams Kobelt, one manual hydraulic pump an electro hydraulic pump
- 2 composite (glass/vinylester) rudder blades with aluminium stocks
- 2 self alignment bearings on top and deck
- a SS steering wheel
- 2 safety tillers with access by deck outlet on the sterns
- The auto pilot is connected to the 24V hydraulic pump.

An reverse AC system of 88 000 BTU for saloon, kitchen and cabins.

CHARGERS/CONVERTERS,2 Chargers(VICTRON) 24V/100A to charge the batteries ,2 Inverters(VICTRON) 5 000W

DOCK LINE,of 20 m lenght with 63 A plug on a rool Cable Master

BATTERIES

Service batteries, 12 ODYSSEY AGM(12V 214Ah) gel batteries, 1284 Ah in 24V.

charged using the 24V/100A chargers connected to the generators or the dock or the extra alternators. Replaced in NZ, 2 years ago

Engine starting batteries, own starting batteries ODYSSEY AGM(2*12V 100Ah), 200 Ah in 12V,

Extra alternators : Mastervolt 110A/24V , fitted with an Alpha pro regulator with temperature gauge.

SOLAR PANNELS & WINDVANES

8 solar pannels , type SM 225 M35 MARINE SOLARAon the aft of the flybridge.Two windvanes D400,Eclectic Energy

Engine & Mechanical

Gear Boxes

Two hydraulic gearboxes from ZF , reduction ratio 2,9

Shaft lines

The Shaft lines are in SS, diameter 65 mm

They are protected from corrosion by zinc anodes

The shaft lines are supported by a brass shaft support

Two propellers VARIPROP 4 blades

References : 34*25*22 RH & LH DF-210

A rope cutter is fixed in front of each propeller

An electric pump is installed for pumping out used oils from engines and generators.

The exhausts of the main engines include : a water pot Centek (waterlock).

The exhausts of the generators are equipped with water separators Combo Sep Centek

Life areas are separated from the engine rooms by Balsa composite watertight bulkheads.

The engine rooms walls are in Balsa/Glass/Resin sandwich composite to limitate vibrations.

The engine rooms hatches are insulated by insulation complex

The generators are located in insulated cocoons, located in the engine rooms.

Engines and generators are fixed on silent blocks to limitate vibrations transmission.

The engine room is feeded with fresh air through appertures (with chicanes)

equipped with air dryers, the outlet being done by axial ventilators, high efficiency (FEIT 25 cubic meter/mn). Inlets and outlets equipped with fire retardators

Tanks, in aluminium, total volume 8 000 L .

day tanks in aluminium (volume 140L each) in the engine rooms

Filters and separators, a water/fuel separator RACOR 500 installed for each engine, or generator, plus one ALGAE X LG-X system eliminating the microbiae growth.

An electric transfert pump FEIT (54L/mn) to equilibrate the two tanks,

- complete engine drive shafts and propellers -Aug 2018

- complete check of generators-Aug 2018

- New house and engine battery banks- Aug 2018

Sails & Rigging

New fully battened mainsail by Incidence 65,000 Euro Delivery March 2022

The mast is 34 meter long. It is built in carbon fibers which modulus is 235 Gpa. The aerial draft is 39,00 meters

The boom is of canoe type, in carbon composite, with hardware for reefs, lazy jacks and lazy bag

The sail plan is a sloop type, with a top gaff rig fullbatten mainsail and a genoa. A geenacker is settled at the fore end of the longitudinal beam. All sails are in Spectra, but the Geenacker being in Stormlite and the spinnaker being in nylon.

Main sail, Spectra of 235 m² , 6 battens.

Genoa ,135 m² built in Spectra ,on an electric furler

Geenaker, built in Stormlite , 260 m² ,on an electric furler

Spinnaker : 350 m² , color : orange

All forward sails equipped with anti UV protection stripes.

Fore stay ,In Rod Navtec with turnbuckle

Geenacker stay,Anti torsion textile cable, protected

Shrouds, in Kevlar from Navtec (PVC protected)

Diamond shrouds, in Kevlar from Navtec (PVC protected)

Last control : NewZealand , 2 years

- New Kevlar standing rigging -Aug 2018

- New standing rigging cables-Aug 2018

- New running rig-Aug 2018
- New main sail stack pak-Aug 2018

New fully battened mainsail by Incidence 65,000 Euro Delivery March 2022

Additional Information

2 new air conditioning in salon Jan 2022

New bottom paint and all underwater fittings serviced. Jan 2022

MONITORING :

- Tanks levels
- Service batteries : Capacity, Tension, alternators charge currents , current PNX solar pannels, discharge currents
- Temperature 2 engine rooms (exhaust and local) + technical locker
- Chargers states

FIRE PORTECTION SYSTEM

Portable equipment , extinguishers

Automatic extinguishing system for engine rooms

A SEA FIRE FD-1350 in each engine room.

SAFETY EQUIPMENT

Life rafts, 2

Alarms and detection system, for gaz is installed with its alarms.

Safety equipments (small) , mob Raymarine Life Tag with a central unit and 10 bracelets

Tracking system, Satellite (Advanced Tracking) with movements detection, anti pirats button and anti intrusion Alarm

Tender - complete new tubes. Aug 2018

NEW Bottom paint Oct 2019



Used Sail Catamaran for sale 2012 Sunreef 82 DD - HOUBARA



Used Sail Catamaran for sale 2012 Sunreef 82 DD - HOUBARA



Used Sail Catamaran for sale 2012 Sunreef 82 DD - HOUBARA



Used Sail Catamaran for sale 2012 Sunreef 82 DD - HOUBARA



Used Sail Catamaran for sale 2012 Sunreef 82 DD - HOUBARA



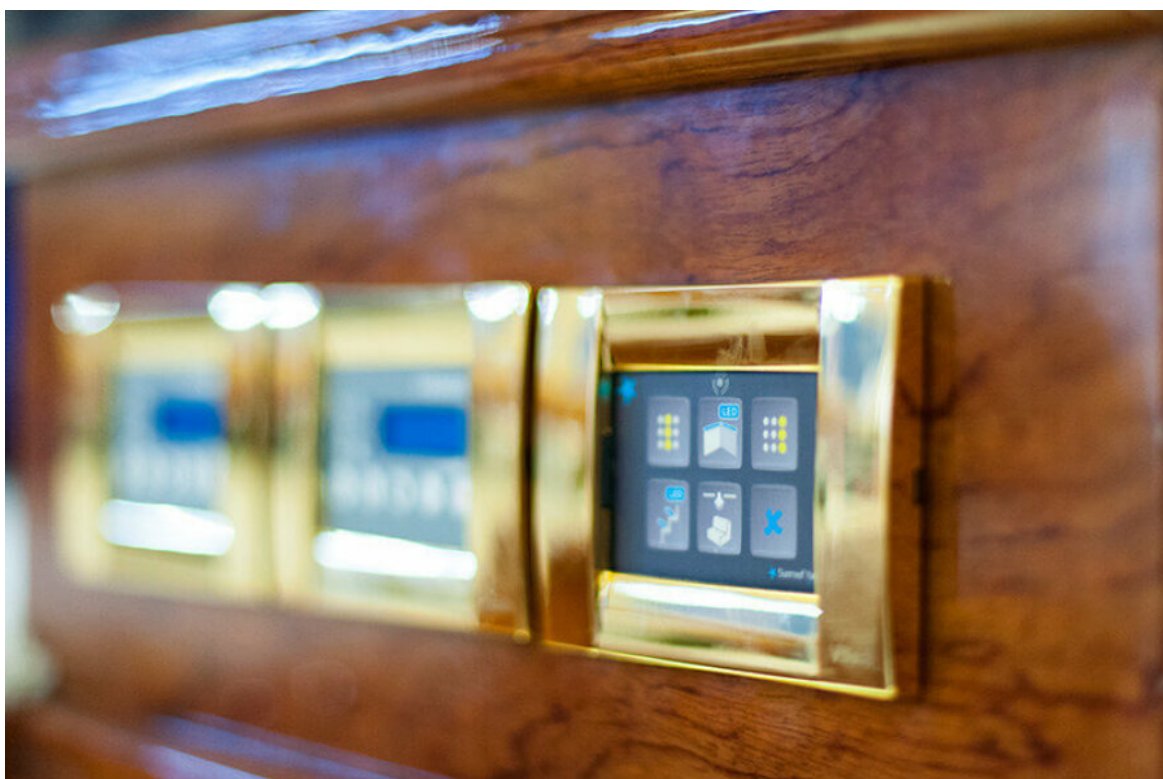
Used Sail Catamaran for sale 2012 Sunreef 82 DD - HOUBARA



Used Sail Catamaran for sale 2012 Sunreef 82 DD - HOUBARA



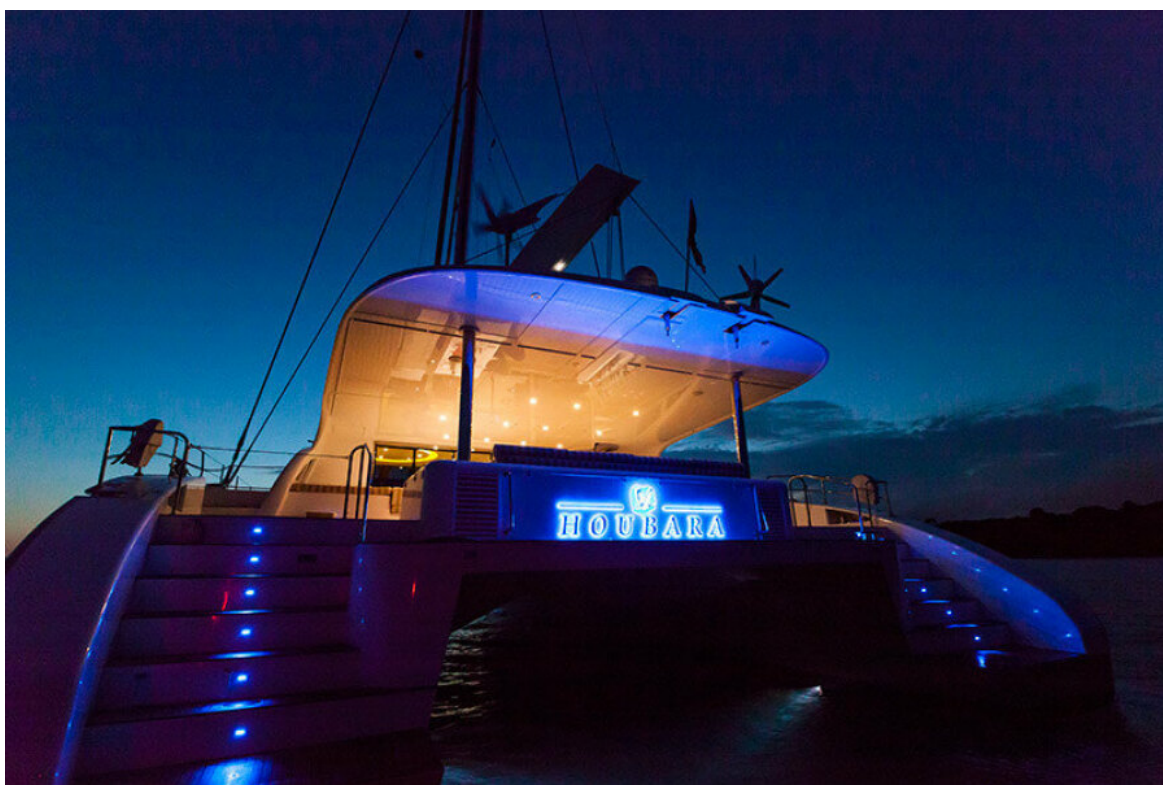
Used Sail Catamaran for sale 2012 Sunreef 82 DD - HOUBARA



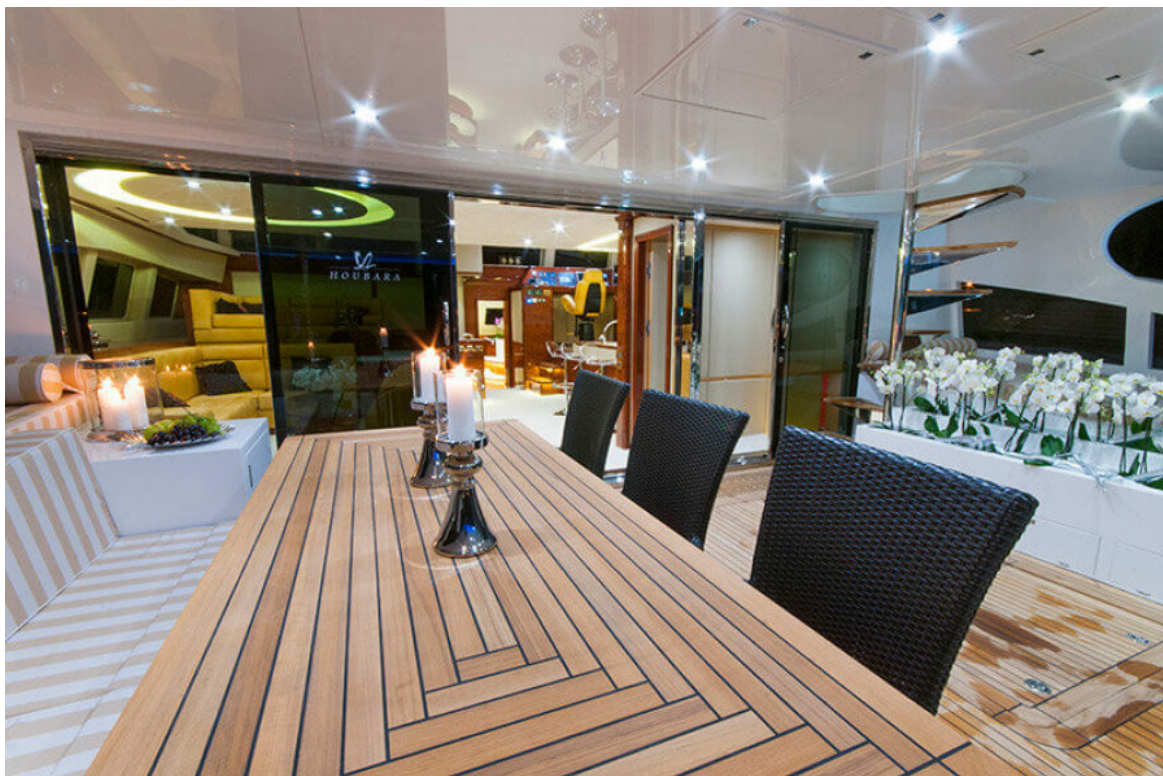
Used Sail Catamaran for sale 2012 Sunreef 82 DD - HOUBARA



Used Sail Catamaran for sale 2012 Sunreef 82 DD - HOUBARA



Used Sail Catamaran for sale 2012 Sunreef 82 DD - HOUBARA



Used Sail Catamaran for sale 2012 Sunreef 82 DD - HOUBARA



Used Sail Catamaran for sale 2012 Sunreef 82 DD - HOUBARA



Used Sail Catamaran for sale 2012 Sunreef 82 DD - HOUBARA



Used Sail Catamaran for sale 2012 Sunreef 82 DD - HOUBARA



Used Sail Catamaran for sale 2012 Sunreef 82 DD - HOUBARA



Used Sail Catamaran for sale 2012 Sunreef 82 DD - HOUBARA



Used Sail Catamaran for sale 2012 Sunreef 82 DD - HOUBARA



Used Sail Catamaran for sale 2012 Sunreef 82 DD - HOUBARA



Used Sail Catamaran for sale 2012 Sunreef 82 DD - HOUBARA



Used Sail Catamaran for sale 2012 Sunreef 82 DD - HOUBARA



Used Sail Catamaran for sale 2012 Sunreef 82 DD - HOUBARA



Used Sail Catamaran for sale 2012 Sunreef 82 DD - HOUBARA



Used Sail Catamaran for sale 2012 Sunreef 82 DD - HOUBARA



Used Sail Catamaran for sale 2012 Sunreef 82 DD - HOUBARA



Used Sail Catamaran for sale 2012 Sunreef 82 DD - HOUBARA



Used Sail Catamaran for sale 2012 Sunreef 82 DD - HOUBARA



Used Sail Catamaran for sale 2012 Sunreef 82 DD - HOUBARA



Used Sail Catamaran for sale 2012 Sunreef 82 DD - HOUBARA



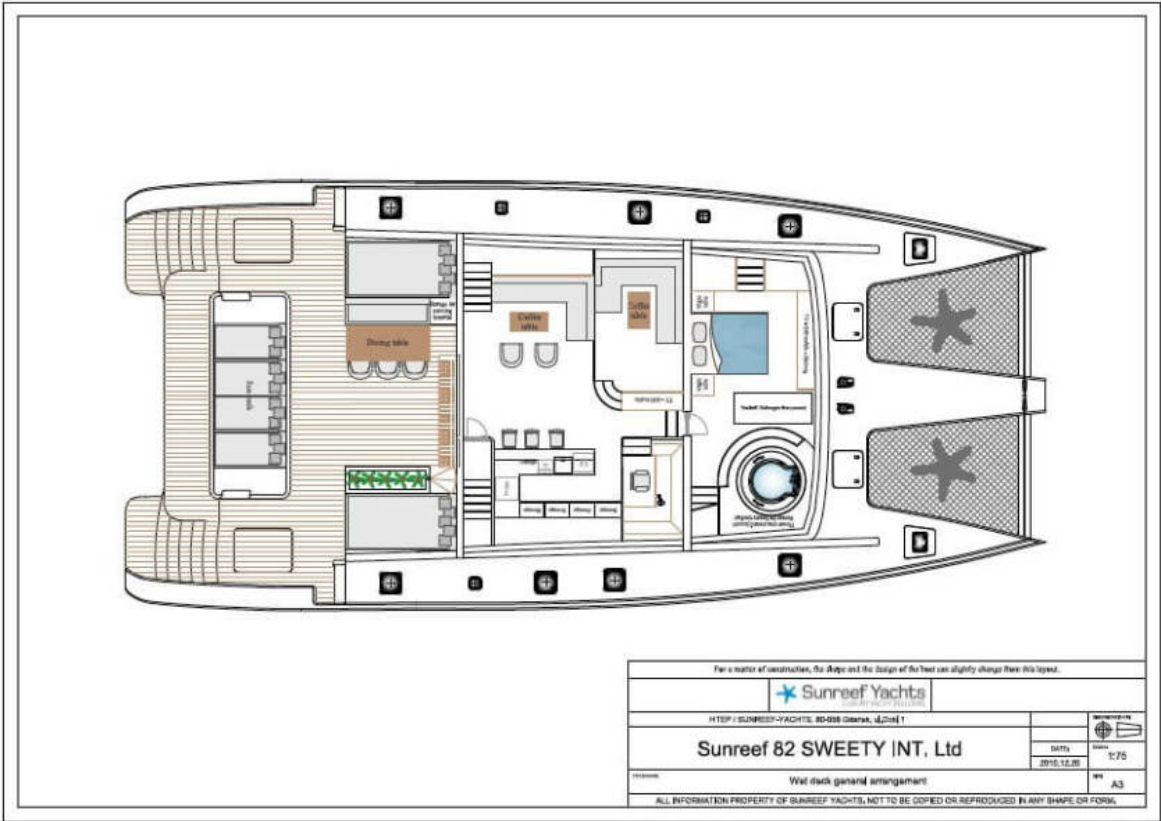
Used Sail Catamaran for sale 2012 Sunreef 82 DD - HOUBARA



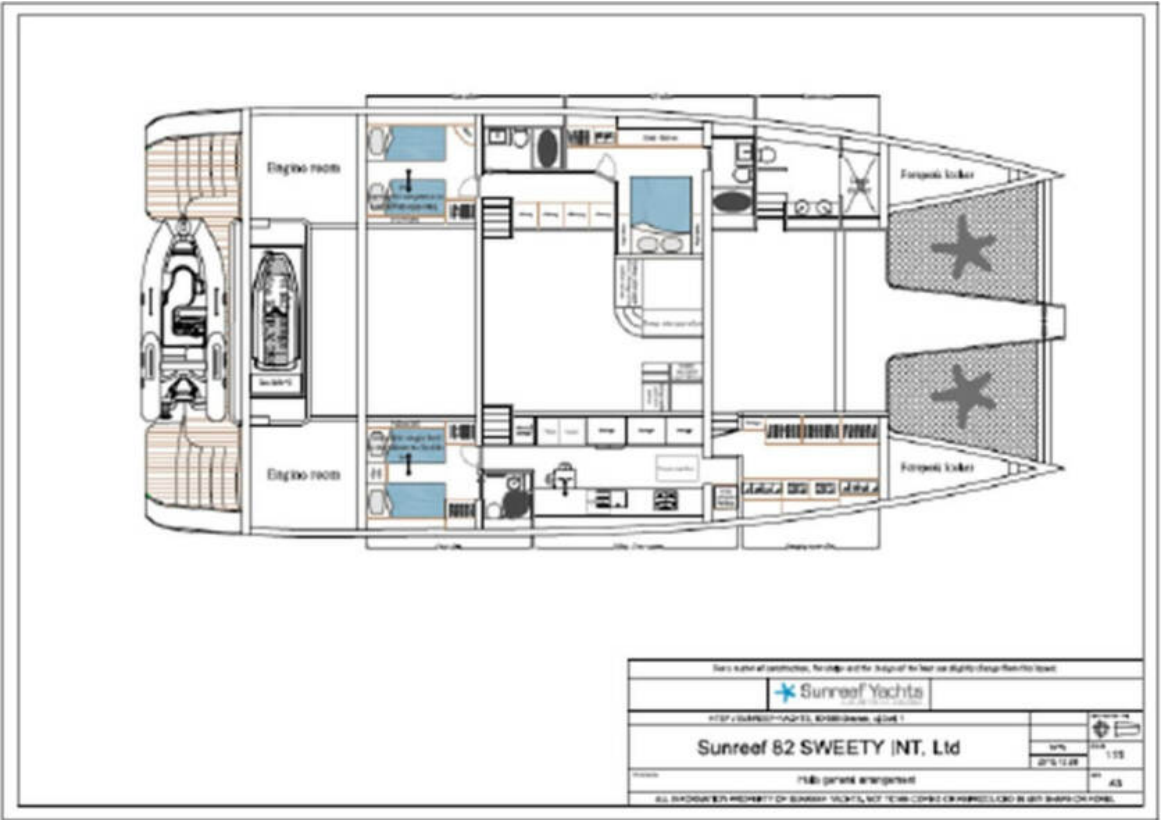
Used Sail Catamaran for sale 2012 Sunreef 82 DD - HOUBARA



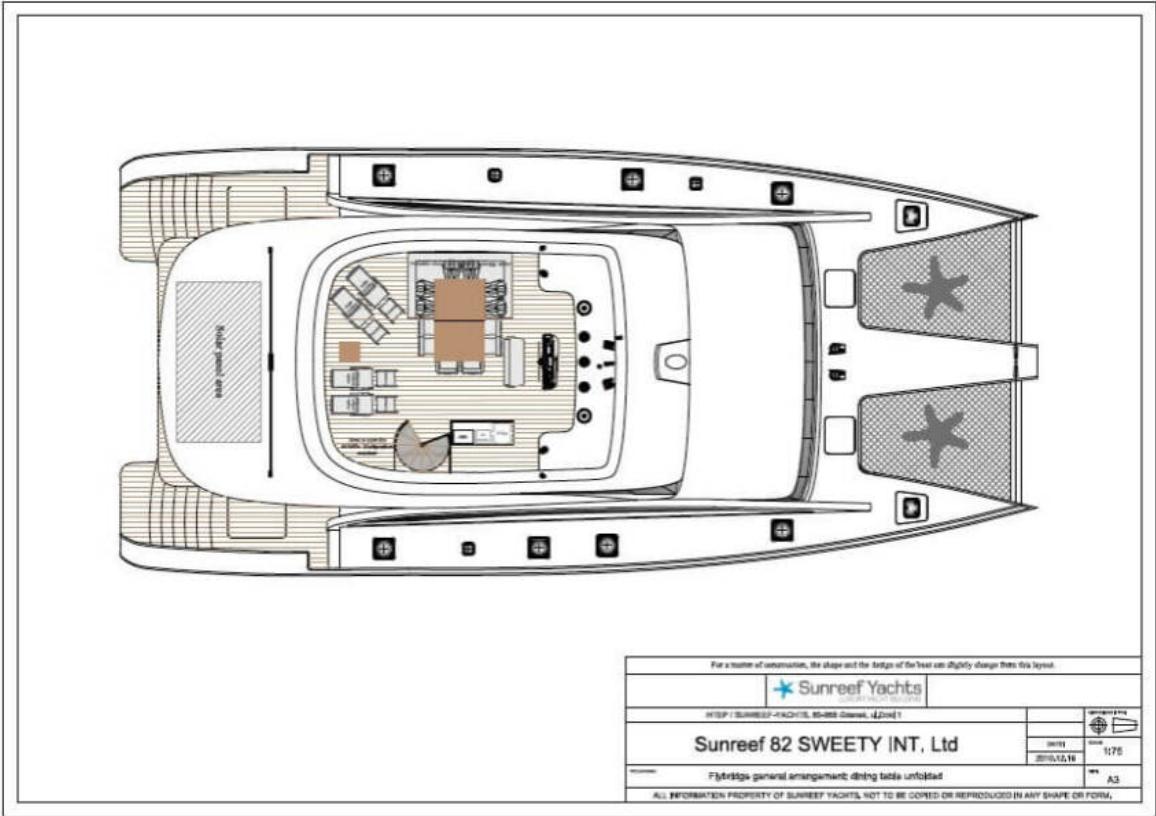
Used Sail Catamaran for sale 2012 Sunreef 82 DD - HOUBARA



Used Sail Catamaran for sale 2012 Sunreef 82 DD - HOUBARA



Used Sail Catamaran for sale 2012 Sunreef 82 DD - HOUBARA



Used Sail Catamaran for sale 2012 Sunreef 82 DD - HOUBARA



Used Sail Catamaran for sale 2012 Sunreef 82 DD - HOUBARA



Used Sail Catamaran for sale 2012 Sunreef 82 DD - HOUBARA