



Ravello

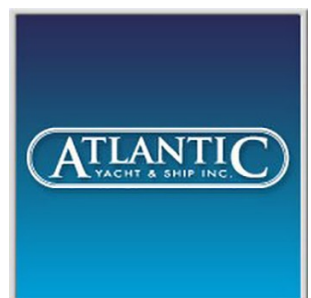
55' (16.76m) 2011 Azimut Flybridge
Miami Beach Florida United States



OVERVIEW

\$599,000

Manufacturer:	Azimut	Hull Material:	Fiberglass
Engines:	2 MAN	Cruise Speed:	
Engine Model:	R6	Max Speed:	
Engine HP:	730	Cabins/Heads:	3 / 2
Beam:	15' 7"	Fuel Type:	Diesel
Max Draft:	4' 5"	Fuel:	618 G (2339.38 L)
Water:	156 G (590.52 L)		





Data Sheet

Category: Motor Yachts
Condition: Used
Model Year: 2011
Beam: 15'7" (4.75m)
Max Draft: 4' 5" (1.35m)
LOA: 54' 9" (16.69m)
Cabins: 3
Sleeps: 6
Twin Berths: 2
Queen Berths: 2
Full Beam Master: Yes
Heads: 2

Crew Cabins: 1
Captain's Quarters: Yes
Crew Sleeps: 1
Fuel Type: Diesel
Hull Material: Fiberglass
Hull Shape: Modified Vee
Hull Finish: Gelcoat
Bridge Clearance: 18'

Dry Weight: 59525 lbs
Fuel Tank: 618 gal (2339.38 liters)
Fresh Water: 156 gal (590.52 liters)
HIN/IMO: AZI53037F111
In Stock: Yes

Engines/Generators

Engine 1

MAN
R6
Inboard
730HP
544.36KW
Fuel: Diesel
Hours: 650
Hours Date: 08-01-2023
Year: 2011
Location: Port

Engine 2

MAN
R6
Inboard
730HP
544.36KW
Fuel: Diesel
Hours: 650
Hours Date: 08-01-2022
Year: 2011
Location: Starboard

Generator 1

Kohler
20KW



Summary/Description

"Ravello" is an original owner Azimut 53 flybridge whom has cared for her remarkably in all aspects. Note under 700 hours on MAN R6 power, hydraulic swim platform, passarelle, 3 staterooms (including a full beam master cabin with a hull-window side settee) plus crew, finely kept synthetic teak deck

"Ravello" is a one-owner boat which has been impeccably cared for.

She offers a fine assortment of desirable options and features including:

- Low engine hours
- Crew cabin
- Hydraulic platform
- Synthetic teak decks
- Aft sunshade
- Passarelle
- Satellite TV
- Bow thruster

Come and see how a yacht should be kept. She is ready to cruise and easy to inspect anytime in North Miami Beach, Florida.

Accommodations and Layout

3 Staterooms 3 Baths.

Interior paneling is a modern, attractive **white-washed oak finish**. The interior is carpeted with an **off-white pile carpet**.

From the cockpit thru a sliding stainless door a long, L-shaped sofa is to port with a credenza to starboard.

Forward to starboard is a U-shaped settee seating 6 in comfort. An open galley is to port. A lower helm is just forward of the settee with a folding seat.



Down a few steps to the lower deck, a set of side-by-side twin bunk guest stateroom is to starboard with a centerline queen VIP stateroom forward. These staterooms share a bath.

Aft is a full beam mid-ship master featuring **wide hullside windows** on either side with a queen bed positioned at an angle and a **lovely settee** to port next to a window. A hanging locker is aft to port and a private bath is forward and to port.

A **crew cabin** with bath is provided under the cockpit settee.

Galley

Owners and guests will certainly appreciate the open galley in the salon. Note the abundance of viewing windows for light.

Fridge/freezer

Cooktop (3-burner)

Microwave/ convection oven

Stainless sink

Flybridge drink fridge

Combo washer/dryer (crew stateroom)

Electronics and Entertainment

Raymarine plotters with depth (radar non-functional). Dual screens lower helm, Single screen flybridge

Raymarine autopilot

Raymarine VHF

Raymarine Tri-data

MAN engine displays

Ritchie compass

Jabsco remote spotlight

Satellite TV

Led Tv's each stateroom plus salon

Note: The salon TV is oversized (40") and larger than the retractable tv lift, thus installed directly on the credenza

Panasonic Surround Sound receiver

Electrical

60hz electrical system

Kohler 20 kw genset

AC/DC distribution panel

Shore power cable

Isolation Transformer

Interior and courtesy lighting

Navigation Lighting

Hull and Deck

The cockpit is well shaded and features a **U-shaped settee with a fine teak table** (fixed). Comfortable **steps** lead to the flybridge. **The flybridge features an abundance of seating** with a fold-out **beautifully varnished teak table** (fixed) and a **sunpad** forward.

The deck is covered in **synthetic teak**. It is 2 years old and looks like new. The gelcoat is in fine condition.

Hydraulic swim platform (optional PWC is not included as it is owned separately)

Passarelle

Transom retractable sunshade (manual)

Bow thuster (factory electric)

Cushions (recovered 2019) and covers (2021)

Bimini Top (fixed with stainless framing)

Textaline window covers

Windshield wipers

Quick windlass (remote and foot switches foredeck)



Stainless steel anchor and chain

Stainless steel grabrails on walkaround decks

Fender racks on foredeck

Sunpads foredeck

Engine Room and Systems

Savvy buyers often start with the engine room to determine the care and health of a yacht. **You will simply be amazed at how well the engine room shows!** Access and storage is good to most systems. No corrosion or leaks are evident!

MAN R6 730 HP common-rail electronic engines (650 hours original)(services up to date)

Dual Racor water separators (main engines)

Cruiseair a/c system

Techma heads

Fresh water system

Automatic/manual bilge pumps

Engine room blowers

Remarks

"Ravello" is a one-owner boat which has been impeccably cared for.

She offers a fine assortment of desirable options and features including:

- Low engine hours
- Crew cabin
- Hydraulic platform
- Synthetic teak decks
- Aft sunshade
- Passarelle
- Satellite TV
- Bow thruster





Come and see how a yacht should be kept. She is ready to cruise and easy to inspect anytime in North Miami Beach, Florida.





Ravello 2011 53' Azimut



Cockpit



Salon



Salon Starboard Aft View



Salon Port View



Galley



Galley Settee



Settee and Helm



Ravello Lower Helm 2



Master Stateroom



Master Stateroom Settee



Guest Stateroom



Guest Bath



Forward VIP Stateroom



Flybridge Forward



Upper Helm



Flybridge Settee



Wet Bar



Flybridge Seating



Foredeck



Engine Room Storage



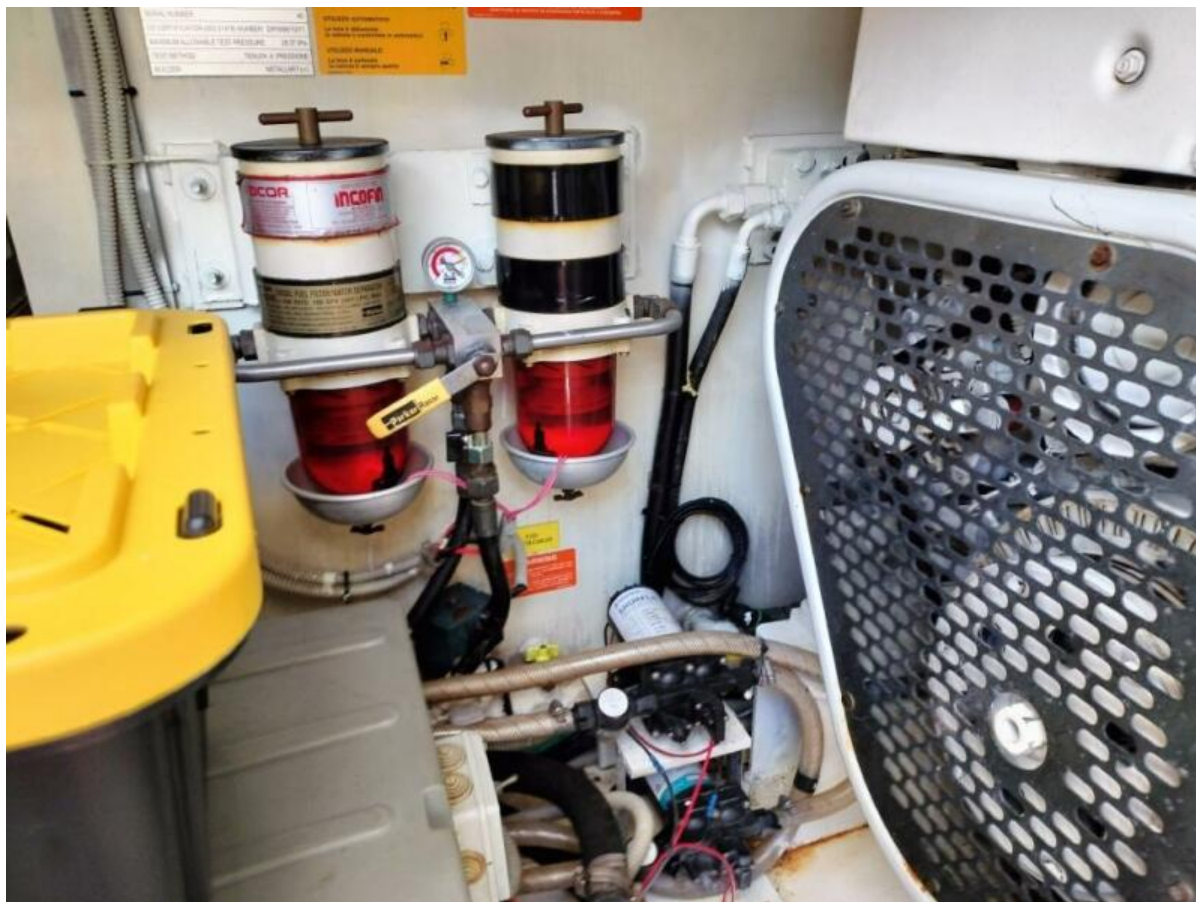
Port Engine



Stbd Engine



Genset



Engine Room Filters



Flybridge Aft View



Stern Profile



Port Profile



53' Azimut Cabin Layout