



# FD75 709

75' (22.86m) 2024 Horizon FD75  
North Palm Beach Florida United States



## OVERVIEW

Manufacturer: *Horizon*

Engines:	2 CAT	Hull Material:	Fiberglass
Engine Model:	C18ACERT	Cruise Speed:	
Engine HP:	1136	Max Speed:	
Beam:	20' 4"	Cabins/Heads:	4 / 6
Max Draft:	5' 8"	Fuel Type:	Diesel
Water:	300 G (1135.62 L)	Fuel:	2400 G (9084.98 L)

**\$6,606,510**





## Data Sheet

Category: Motor Yachts	Crew Cabins: 1	Displacement: 149760 lbs
Condition: New	Crew Sleeps: 2	Stabilizer Brand: ABT
Model Year: 2024	Fuel Type: Diesel	Bow Thruster: Yes
Beam: 20'4" Max Draft: 5' 8" LOA: 76' 8" Hull Material: Fiberglass (23.37m)	Hull Shape: Monohull	Stern Thruster: Yes
LWL: 67' 1" Cabins: 4	Air Conditioning: Yes	Fuel Tank: 2400 gal (9084.98 liters)
Sleeps: 8		Fresh Water: 300 gal (1135.62 liters)
Twin Berths: 4		Builder: Horizon
Queen Berths: 1		Designer: Cor De Rover
King Berths: 1		HIN/IMO: 000750000
On Deck Master: Yes		In Stock: Yes
Heads: 6		

## Engines/Generators

### Engine 1

CAT  
C18ACERT  
Inboard  
1136HP  
Fuel: Diesel

### Engine 2

CAT  
C18ACERT  
Inboard  
1136HP  
Fuel: Diesel

### Generator 1

Onan  
29KW

### Generator 2

Onan  
29KW



## Summary/Description

NEW BUILD UNDER CONSTRUCTION - FOR DELIVERY FALL 2023 Hydraulic swim platform 1,500 lbs Open flybridge w/ dayhead & A/C 1,500 lbs davit on flybridge Dometic SeaXchange & Spot Zero water maker + water purifier (2) 100A shore power & (2) 50A shore power w/ 1 cable masters Wireless Yacht Controller ABT

## Overview

### 2024 Horizon FD75

#### NEW BUILD UNDER CONSTRUCTION - DELIVERY FLIBS 2023

Hi-Lo swim platform lift capacity 1,500lbs

1,500 lbs davit on flybridge

MarQuipt side boarding sea stairs

Remote wired control station with engines & thrusters

ABT zero speed stabilizers

ABT bow & stern thrusters

Dometic SeaXchange & Spot Zero XZII 1200/2000Z water maker + water purifier

(2) 100A shore power & (2) 50A shore power w/ 1 cable masters

Custom Garmin navigation system

Open flybridge with dayhead, seating, full bar & A/C

Raised pilothouse design with full lower helm

Custom interior package for stone, soft goods, and lighting

Full beam on-deck master + three guest cabins below, all ensuite

Crew quarters offers (2) twin beds, head w/shower & countertop workspace

Main salon + convertible dining area

Spacious aft galley with folding doors to aft deck

Aft deck dining + seating for up to 8 guests



\*\* Sister ship photos

## SPECIFICATIONS

### SPECIFICATIONS

White gel coat finish

One piece hull SCRIMP™ cored lamination w/ deep skeg and longitudinal girders

Hull, deck & superstructure-built w/ SCRIMP™ for improved strength & reduced weight

High density foam cored hull bottom, sides, decks & superstructure

Stringers w/ high density foam coring

Strong collision bulkhead structure

International anti-fouling bottom paint w/ anti-osmosis treatment

Tunnels for reduced draft

High Performance Piercing Bow (HPPB) with S/S protection plates

## FORWARD & AFT DECKS

### FORWARD & AFT DECKS

Non-skid FRP side decks & bow deck

Sunpad on fwd deck w/ drink holders, pop up LED lights

Sunshades for bow seating

Forward deck seating w/ backrests, folding table & storage lockers

Heavy-duty S/S #316 2" handrail w/ 1 1/4" stanchions

(10) Heavy-duty 316# S/S cleats & fairlead w/rollers

FRP cap rail

Frameless windows, tinted & tempered safety glass

LED exterior courtesy, bulwark & nav lights

(1) Vertical hydraulic anchor winch MAXWELL VWC3500C

(1) 80 kg S/S anchor

(1) 300 Feet high tensile 1/2" anchor chain

S/S rollers & chain stopper



(1) Chain counter

Custom-designed RGB fiber lighting package around bow & spotlight on HPPB bow

Teak deck on aft deck, swim platform & stair steps

(1) Deckhouse side entrance door, per layout

S/S portholes w/ screens

S/S manual folding & sliding door for main salon

Built-in aft deck seating w/ hi/lo table & loose chairs

Boarding gates on port & stbd sides

Marquipt side boarding stairs w/ handrail & two flush mounts

Manual S/S swim ladder

S/S transom gates from aft deck to swim platform

Hi-lo swim platform at stern, lift capacity 1,500 lbs

(2) Swim platform removable S/S corner rails

Watertight door from swim platform to crew quarters

Built-in shower with hot/cold water

Wiring for boat name on transom

## **FLYBRIDGE & BOAT DECK**

### FLYBRIDGE & BOAT DECK

Non-skid FRP flybridge & boat deck

Teak deck in F/B

Air conditioning in F/B (two 18K units, total 36,000 BTU)

Custom-designed fixed front windshield w/ S/S frame & (2) wipers, per layout

Integrated instrument panels w/ (2) Garmin 17" GPSMAP 8617 screens; Garmin autopilot; trim tab screens; compass; full set of engine gauges; stabilizer screen; chain counter screen; bow/stern thrusters; VHF

C-Zone monitoring system for impt equip (fuel & water gauges, generators, navigation lights, bilge, sump pumps, ER blowers, etc.)

(2) STIDD helm chairs

One hatch on F/B hardtop, above console

L-shaped sofa w/ folding table



(4) Valdenassi folding director's chairs

Wet bar w/ sink, U-line refrigerator/icemaker & custom S/S swivel bar stools

Custom FB starboard balcony w/ opening gate & safety rail & teak floor

Dayhead on port side

Sun awning with carbon posts on boat deck

Per layout, Custom cabinet w/ Corian top & propane 24" BBQ, w/ automatic electric cutoff switches

(1) GE chest freezer w/ Corian top to stbd

Oversize drains w/ strainers on each corner of deck & internal overboard drains

Folding 43" outdoor TV in FB

Hydraulic Steelhead ES1500 davit

## **ENGINE & PROPULSION DETAILS**

### ENGINE & PROPULSION DETAILS

Twin CAT C-18A 1136HP engines w/gearboxes

5-Blade propellers

Hypro electronic command steering system w/ backup pump

S/S AQUA TECH #22 HS shafts

Shaft & rudder packing glands w/maintenance free seals

Main & intermediate bronze struts w/backing plates

Emergency steering

S/S rudder w/zinc plates

Hydro tab trim tabs w/indicators

Hydraulic ABT zero speed stabilizer (300/9X') w/one PTO at generator

Exhaust system for engines w/mufflers

TRIDENT hose for engine exhaust

S/S covers for engine exhaust pipes

FRP water/exhaust separator for generator

One SEAFIRE automatic/manual fire extinguisher for ER w/panel in helm station

Integrated fire alarm system in pilothouse with smoke detector in each zone



Auto SEAFIRE shutdown system

Manual fire damper system

## **MECHANICAL SYSTEMS**

### **MECHANICAL SYSTEMS**

2,400 Gallon aluminum fuel tanks w/ heavy duty sight gauges & self-closing control valve

Dual RACOR 75/1000MA fuel filters/water separator, each engine

RACOR 500MA fuels filter on generator

Oil change pump system for engine, gears & generator

MARINE AIR chilled water air conditioning system

Extra A/C water circulation pump (ship loose)

Built-in FRP water tank, 300 Gallons

Dometic SeaXchange & Spot Zero XZII 1200/2000Z water maker + water purifier w/ 7" screen control on helm High-volume AC freshwater pressure pump & one DC pump for back up

Fresh water charcoal filters in main supply pipe

Marine grade lines & color-coded piping for freshwater system

(2) 20 Gallon water heaters

Hot water circulation pump

Freshwater hose for filling engine & gen expansion tank

Freshwater & sea water anchor chain, manual washdown

Aft freshwater deck washes

Built-in FRP 120 gallon holding tank w/ macerator pump

Electric level indicators for holding tank

Y valve for holding tank dockside pump out

Spare holding macerator bypass pump

Electric flush toilet in each head

Sump pumps for drains overboard

Electric RULE bilge pumps

High water bilge alarm

(1) Manual bilge pump in engine room

One bilge exhaust blower

Air compressor

## **ELECTRICAL SYSTEMS**

### ELECTRICAL SYSTEMS

LED interior & exterior lighting, per plan

(2) ONAN 29kW/60HZ generators

FRP water/exhaust separator for generator

Remote wired control station w/ engines & thrusters (2 outlets in raised pilot house and aft deck)

BEP battery switch

(2) Inverter 3kW

(1) 24V DC to 12V DC step down 40A transformer

One 60A battery charger for engine & generator start up batteries

(2) 80A battery chargers with control panel for service batteries

(4) 210A/12V batteries for engine & gen start up

(8) 400A/6V batteries for ship service power

Select switch for AC power supply

All batteries enclosed with proper fixtures

Vapor proof battery switch

(1) Glendinning shore power cable masters 50Amp w/75' power cables

(2) ANG12.5KVA transformer for each 50amp shore power connection

Main electric panel includes AC & DC circuit breakers

Italian VIMAR switches for lighting switches & receptacles

USB charger outlets in each cabin (2), salon (1) & pilothouse (1)

AC volt duplex receptacles located throughout including engine room

GFI protection for all AC outlets in exterior, heads, galley, & engine room

24 Volt DC monitoring

Electrolysis bonding system

Two zinc anodes on transom





(6) Blue underwater lights

(2) LED stern docking lights

(1) LED Tokai SANSHIN search light

Dyson vacuum cleaner w/outlets in cabinet, per layout

## **ELECTRONICS**

### **ELECTRONICS**

SAT TV (KVH HD7 + 5 receivers, one dummy dome)

Upgraded AV system per drawing

WAVE wifi booster

Pepwave 4G

(2) PTZ cameras

## **PILOTHOUSE**

### **PILOTHOUSE**

(2) STIDD helm chairs

Leather sofa

Integrated instrument panel w/ steering wheel, trim tab controls; compass; full set of engine gauges & MMC control; stabilizer screen; chain counter screen; sea fire display; bow/stern thruster control; wiper control; card reader; reading light; C-Zone 10" touchscreen w/ monitoring system (lights, tank levels, battery levels, smoke alarms, start/stop gens & more)

Electric air horn

Upgraded Garmin navigation package, including:

(3) 17" GPSMAP 8617 screens

VHF wired handset each station

GMX54 weather station

Garmin Autopilot

Garmin GPS

Garmin 48" 12kW 72nm open array radar system

Garmin Autopilot system

Garmin Wind/Speed/Temp/Depth transducers

Garmin VHF w/built-in loudhailer



Garmin AIS

Dimmer switch for ceiling lights

## INTERIOR DÉCOR & EQUIPMENT

### INTERIOR DÉCOR & EQUIPMENT

Guest accommodations include on deck master stateroom, full beam VIP, (2) twin guest staterooms, all ensuite

Crew quarters offers (2) twin beds, head w/shower & countertop workspace

Custom interior package for stone, soft goods, and lighting

Glasses for wine sets (champagne, martini, double rock and burgundy, 8 each)

Internal stairs from P/H to F/B

Miele stacked washer/dryer in lower-level companionway

## SALON

### SALON

U-shaped leather sofa

Custom-design coffee table w/ storage

Custom area rug

Removable folding dining table w/six chairs

Electric blinds (for two main windows)

Custom design marble wall behind pilothouse in salon

Samsung 55" LED TV in half height cabinet w/ hi/lo lift mechanism & manual rotation

Home theater system

## GALLEY/DINETTE

### GALLEY/DINETTE

Storage per layout

Jenn-Air cook top

Miele oven

GE microwave

Bosch panel ready dishwasher

Fisher & Paykel panel ready refrigerator



Subzero double freezer drawers

Kitchenaid trash compactor

S/S Hansgrohe sink & faucet w/ GE disposal

U-line icemaker

## **MASTER STATEROOM**

MASTER STATEROOM

King-size bed w/ nightstands

High-density hotel grade pocket spring mattresses

Fully equipped head w/ toilet, shower & dual sinks

Vanity w/ seat to port

Leather lounge chair to stbd

(3) Hanging closets

Owner's safe

50" LED TV w/ electric fold-down cabinet in ceiling

## **STATEROOMS**

VIP STATEROOM

Queen size bed w/nightstands

High-density hotel grade pocket spring mattresses

Hanging locker

Vanity to stbd

Fully equipped head w/ shower, sink & toilet

43" LED TV

Marine speakers

PORT TWIN GUEST STATEROOM

(2) Twin beds

Storage under inboard bed

Hanging locker





24" LED TV

Marine speakers

#### STBD TWIN GUEST STATEROOM

(2) Twin beds, inboard bed slides manually

Nightstand

Hanging locker

32" LED TV

Marine speakers

### **CREW**

#### CREW STATEROOM

(2) Single beds + hanging locker

(1) 24" TV in crew cabin

Countertop/workspace w/ storage

Vitrifridge fridge

Head w/ sink, shower & toilet

Marine speakers





Horizon FD75 Horizon FD75 cruising over the ocean.



Horizon FD75 Horizon FD75 running over the open ocean with blue bow flag.





Horizon FD75 Horizon FD75 aerial shot.



Horizon FD75 Flybridge helm with 2 grey chairs.



Horizon FD75 Large boat deck with BBQ.



Horizon FD75 Aft deck seating area with 2 loose white chairs.





Horizon FD75 Aft deck L shape seating area with orange accents.



Horizon FD75 Crew door from swim platform.





Horizon FD75 Pilothouse helm with 2 STIDD chairs.



Horizon FD75 Open salon with custom feature stone wall.





Horizon FD75 L-shaped sofa with coffee table.



Horizon FD75 Aft galley with panel-ready appliances.



Horizon FD75 Aft open galley with waterfall island.

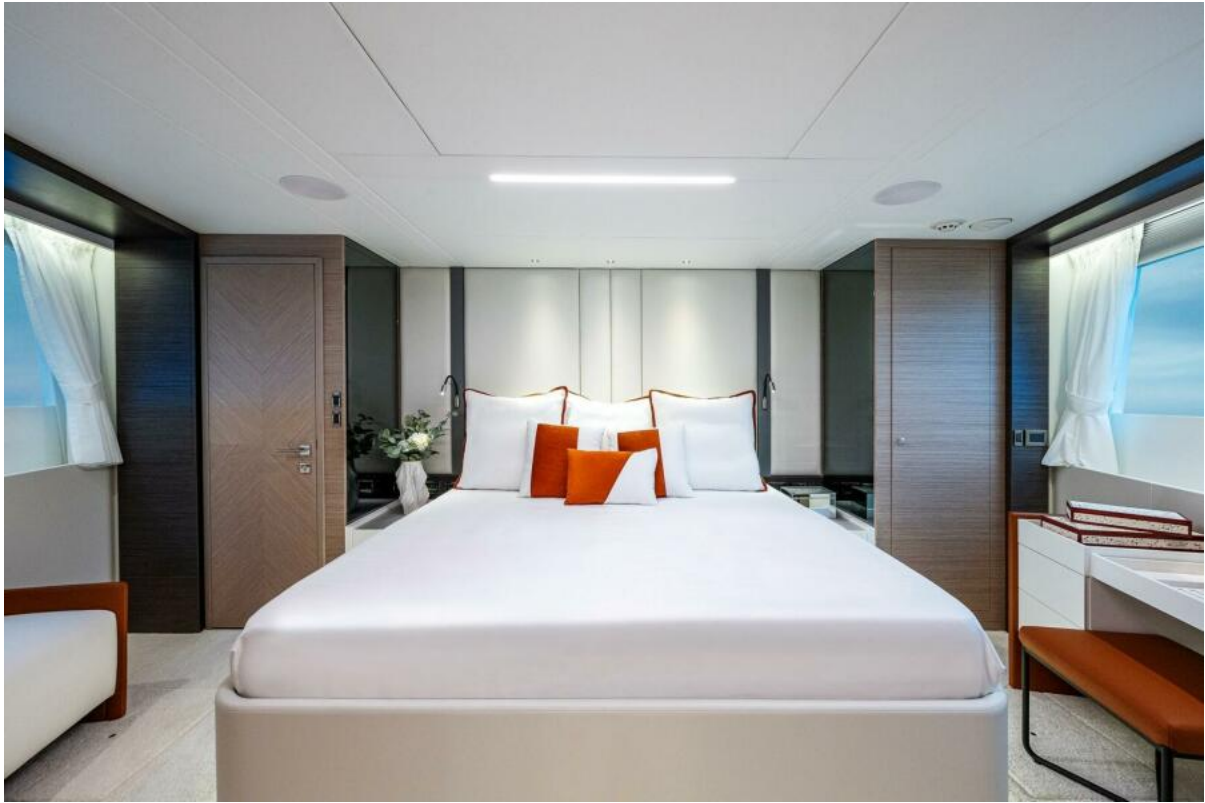


Horizon FD75 Glassware storage with lighting and shelving.

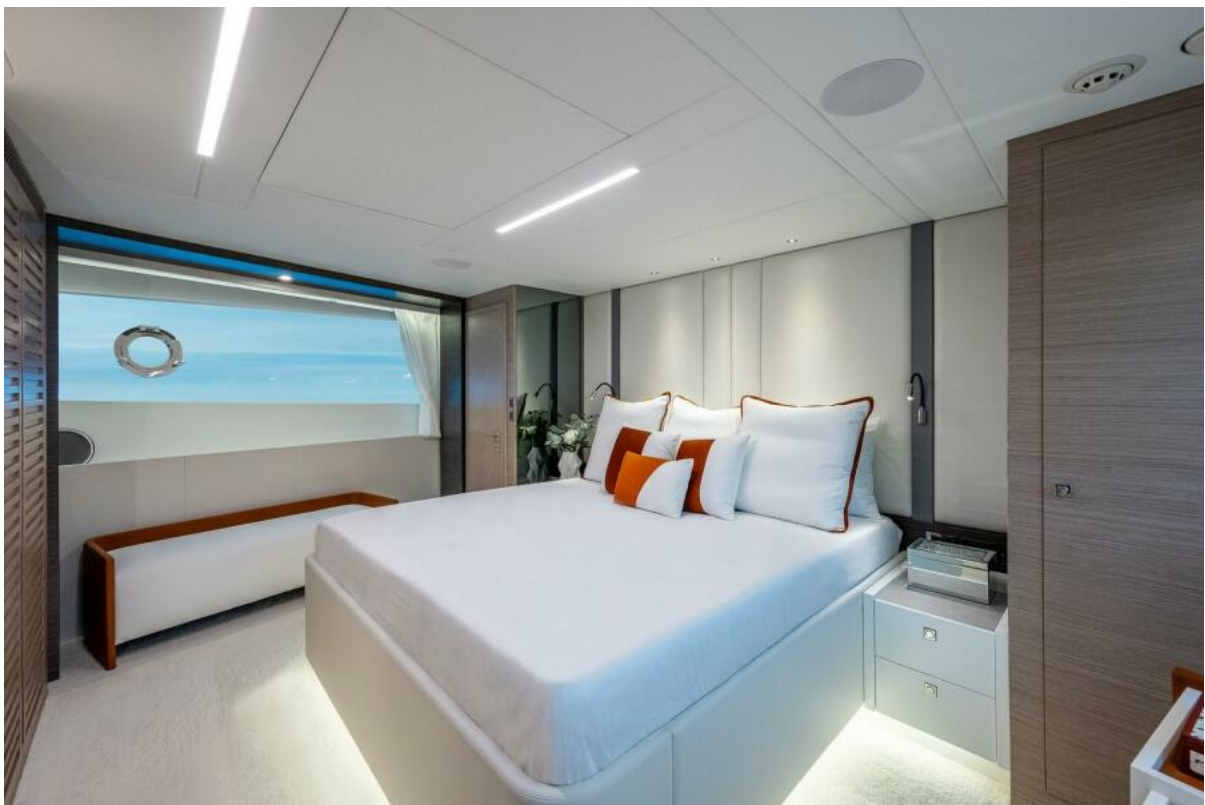


Horizon FD75 Foyer at bottom of wood staircase.





Horizon FD75 Forward master stateroom with orange accents.



Horizon FD75 Forward master with sofa to starboard.



Horizon FD75 Master stateroom with drop down TV.



Horizon FD75 Master bath with duel sinks and smart mirror.





Horizon FD75 Full beam VIP stateroom with vanity.



Horizon FD75 Twin stateroom with sliding bed feature.





Horizon FD75 Crew berth with TV.