



Bumper Boat

56' (17.07m) 2017 Prestige 560 Flybridge
Sarasota Florida United States



OVERVIEW

Manufacturer:	Prestige	Hull Material:	Fiberglass
Engines:	2 Cummins	Cruise Speed:	24 Knots
Engine Model:	QSC 8.3	Max Speed:	30 Knots
Engine HP:	600	Cabins/Heads:	3 / 2
Beam:	15' 9"	Fuel Type:	Diesel
Max Draft:	3' 8"	Fuel:	581 G (L)
Water:	211 G (L)		

\$1,099,000





Data Sheet

Category: Flybridge	Maximum Speed: 30 Knots	Fuel Tank: 581 gal Fresh Water: 211 gal
Condition: Used	Cruise Speed: 24 Knots	Holding Tank: 64 gal HIN/IMO:
Model Year: 2017	Fuel Type: Diesel	IRIRT150L617
Beam: 15'9" Max Draft: 3' 8" LOA: 56' (17.07m)	Hull Material: Fiberglass	Stock #: BR4839-JAK
Cabins: 3		
Sleeps: 6		
Heads: 2		

Engines/Generators

Engine 1

Cummins
QSC 8.3
Inboard
600HP
Fuel: Diesel
Hours: 480
Year: 2017
Serial #: null
Location: Port

Engine 2

Cummins
QSC 8.3
Inboard
600HP
Hours: 480
Year: 2017
Serial #: null
Location: Starboard



Summary/Description

For Sale

This 2017 Prestige Yacht 560 Flybridge, "Bumper Boat" is the most upgraded and well equipped TRUE 560 model Prestige on the market today. "Bumper Boat" offers numerous factory and after-market options and is a truly turn-key ready to go vessel. Alpi light oak walls, white linen upholstery and Wenge floors with Oyster carpeting bring natural light and color into every space while offering subtle accents through the interior. The vessel has a KVH HD7 Satellite TV system with dummy dome, Wifi system, 400 GPD Sea Recovery water maker, and extended swim platform with built-in boarding stairs and fixed flybridge hardtop. With very low hours, this is as close as you can come to purchasing a brand new vessel at used boat pricing.

Heavy engine service and bottom paint completed in July 2020

Engine, transmission, generator service 9/15/21

Vessel Walk Through

Stepping aboard the vessel at the hydraulic swim platform, you will see a series of steps flush mounted in the deck. When the swim platform is deployed, these become stairs leading from the water into the cockpit. The cockpit entrance door is to starboard, with an oversized sunpad and optional seating along the transom. The cockpit features a high gloss, folding teak table, a cockpit shade and overhead retracting sunshade. Below the cockpit seating, access to the captain's cabin is located to starboard. To port and starboard, you will see teak steps to permit access to the bow of the boat, and floating teak steps to port leading to the flybridge. The aft bulkhead of the saloon is mirrored glass windows with three sliding doors across the entire entryway offering multiple configurations. Before entering the saloon, you will see an aft wing station with Zeus pod control, engine shutoff, bow thruster, underwater lights and washdown controls. Upon entering the saloon, you will see a breaker panel with a dry bar and icemaker immediately to starboard and an aft located galley to port. The galley has dual sink basins, a three burner cooktop stove, dishwasher, convection microwave, full size refrigerator and freezer as well as storage cabinets throughout. Moving forward from the galley, you will see a stairwell to starboard that accesses the master stateroom. The master stateroom is full beam and amidships, with natural lighting coming in oversized windows to port and starboard. It has a private head with walk in closet and pass through shower between closet and vanity. On the saloon level, moving forward past the master stairwell is overstuffed white linen couches with an electric height adjusting coffee/dinette table offset to port. The saloon finishes with a lower helm station that boasts a full complement of Raymarine and Mercruiser electronics and a double wide helm seat. Electric windows to port and starboard, as well as in-line dual skylight hatches above offer the ability to open up the vessel to the outside elements. The forward stairwell grants access to the guest quarters with twin bunks to port, a dayhead to starboard and the VIP berth in the bow.

Salon

- Linen Oyster couches
- Wenge interior flooring
- Electrically raising saloon table doubles as dinette with folding leaves
- TV in electric folding storage
- Vogue 39 Carpet
- Grey Oak décor
- Electric lateral blinds
- Bose Acoustimass 3 audio system

- LED overhead lights
- Fusion stereo system with Bluetooth, FM, AM, CD and DVD
- Electric sliding windows to port and starboard
- External curtains in Sunworker Bronze

Galley

- Dual basin sink with hose extension faucet
- Dishwasher
- Convection microwave
- Kenyon 4-burner induction cooktop
- Full size refrigerator and freezer
- Sliding garbage can storage
- Overhead vent hood fan
- Over and under counter storage cabinets
- 110V Icemaker
- Liferaft/provision storage underneath deck
- Multi-entry sliding doors to cockpit

Master Stateroom

- Queen size bed
- Vanity mirror and dual sofas
- Walk-in closet
- Wall-mounted TV
- Fusion stereo control system
- Separate hanging locker
- Vogue 39 carpet
- Central-Vac Vacuum system

Master Head

- Pass-through shower from closet into head
- Teak shower grate
- Medicine cabinet behind vanity mirror
- LED lighting overhead

VIP Stateroom

- Scissor bed converts from queen to two twins
- Fusion stereo control system
- Wall mounted TV
- Private access to day head
- Dual hanging lockers
- Overhead skylight hatch with mosquito/blackout screens

Guest Stateroom

- Twin beds with mattress insert to create Full bed
- Hanging locker
- LED reading lights
- LED overhead lights

- Under-bed storage

Helm

- Dual Raymarine E128 Hybrid touch MFDs
- Mercruiser engine information display
- Raymarine AIS 650 Receiver
- Handheld Raymarine VHF remote
- Bowthruster control
- Windshield wiper controls
- Quick windlass rode counter
- Rocker type switches for DC controls
- Compass
- Zeus joystick
- Skyhook/ autopilot control pad
- Inverter control switch
- Double wide helm seat

Flybridge

- Flybridge galley with sink and electric grill
- Double wide helm seat with the following at the upper helm:
- Dual Raymarine E128 Hybrid touch MFDs
- Mercruiser engine information display
- Raymarine AIS 650 Receiver
- Handheld Raymarine VHF remote
- Bowthruster control
- Windshield wiper controls
- Quick windlass rode counter
- Rocker type switches for DC controls
- Compass
- Zeus joystick
- Skyhook/ autopilot control pad
- Top loading refrigerator/drink cooler
- Sunpad with reclining seats facing forward
- Hardtop with LED lighting blue or white
- High gloss teak table with stainless steel cup holder inserts
- Wraparound bench seats with individual removable back cushions
- Storage under bench for liferaft

Electrical System

- Cummins Onan generator (150 hours)
- 50 Amp and 30 Amp shore power cable
- Crossover switch to run on just 50 Amp
- Inverter
- Battery Charger

Engine Room

- (2) Cummins QSC 600 HP engines
- Dual fuel tanks to port and starboard 581 gallons total

- Sea Recovery 400 GPD watermaker
- Battery bank
- Water filters
- Racor fuel filters
- Additional space for storage in engine room
- Dometic air conditioning compressors
- Glendenning Cablemaster
- Fireboy fire suppression system

Decks

- Hydraulic swim platform rated for 795lbs
- Sliding stairs built into swim platform automatically deploy as lowered
- Covered diesel fuel fills to starboard
- Water and waste tank access on deck
- Sunpad on bow with flip up sofa and cabana shade
- All chain anchor kit with washdown and storage
- Stainless steel cupholders around bow sunpad
- Blue courtesy lighting around boat companionways

Hull

- 4 blue underwater lights, two back two out each side
- Zinc anodes
- Zeus Pod drives
- Bowthruster
- White hull

Exclusions

- Owner's personal effects
- Zodiac tender and 40 HP outboard motor





2017 Prestige 56 Flybridge Profile



2017 Prestige 56 Flybridge Salon



2017 Prestige 56 Flybridge Salon



2017 Prestige 56 Flybridge Salon



2017 Prestige 56 Flybridge Salon



2017 Prestige 56 Flybridge Galley



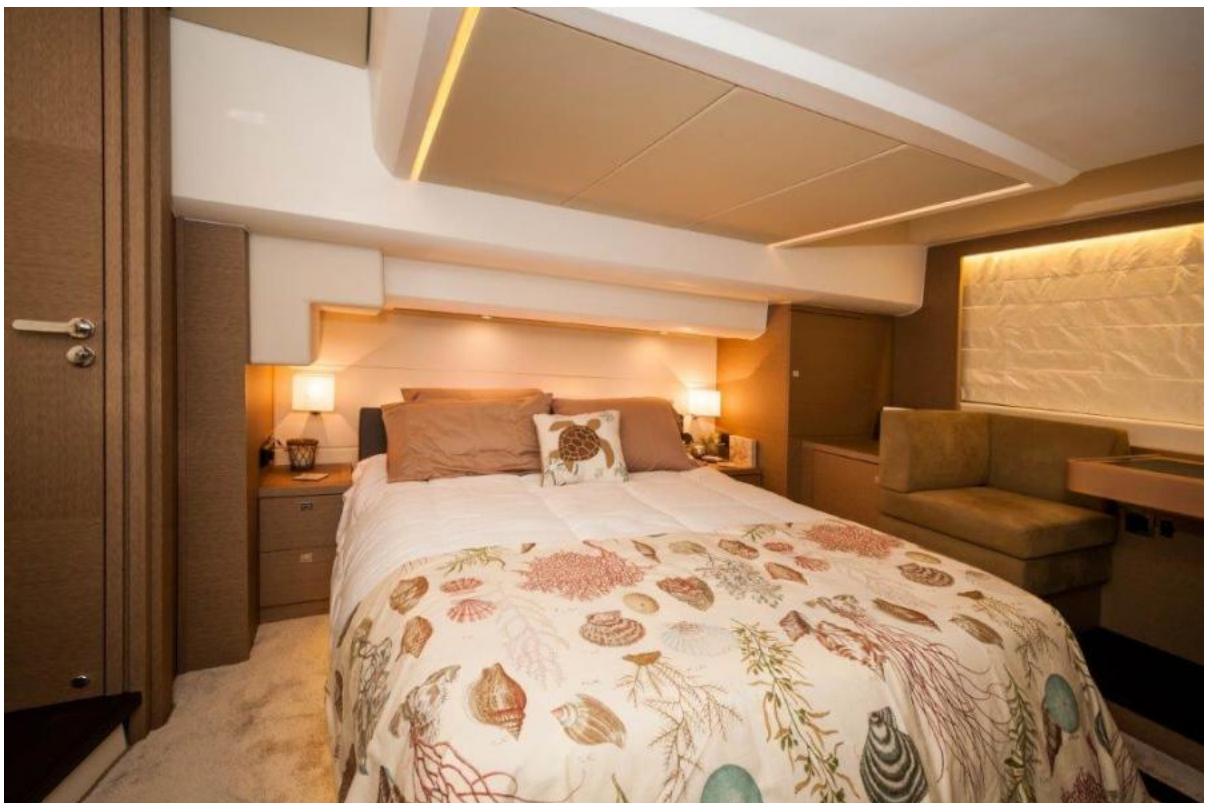
2017 Prestige 56 Flybridge Galley



2017 Prestige 56 Flybridge Galley



2017 Prestige 56 Flybridge Galley



2017 Prestige 56 Flybridge Master Stateroom



2017 Prestige 56 Flybridge Master Stateroom



2017 Prestige 56 Flybridge Master Stateroom



2017 Prestige 56 Flybridge Master Stateroom



2017 Prestige 56 Flybridge Master Seating Area



2017 Prestige 56 Flybridge Master Seating Area



2017 Prestige 56 Flybridge Master Head



2017 Prestige 56 Flybridge Master Head



2017 Prestige 56 Flybridge Master Head



2017 Prestige 56 Flybridge Master Head Shower



2017 Prestige 56 Flybridge VIP Stateroom



2017 Prestige 56 Flybridge VIP Stateroom



2017 Prestige 56 Flybridge VIP Stateroom



2017 Prestige 56 Flybridge VIP Head



2017 Prestige 56 Flybridge VIP Head



2017 Prestige 56 Flybridge Guest Stateroom



2017 Prestige 56 Flybridge Guest Stateroom



2017 Prestige 56 Flybridge



2017 Prestige 56 Flybridge



2017 Prestige 56 Flybridge



2017 Prestige 56 Flybridge



2017 Prestige 56 Flybridge



2017 Prestige 56 Flybridge



2017 Prestige 56 Flybridge



2017 Prestige 56 Flybridge



2017 Prestige 56 Flybridge Cockpit



2017 Prestige 56 Flybridge Cockpit



2017 Prestige 56 Flybridge Cockpit



2017 Prestige 56 Flybridge Cockpit



2017 Prestige 56 Flybridge Helm



2017 Prestige 56 Flybridge Helm



2017 Prestige 56 Flybridge Bow



2017 Prestige 56 Flybridge Ants



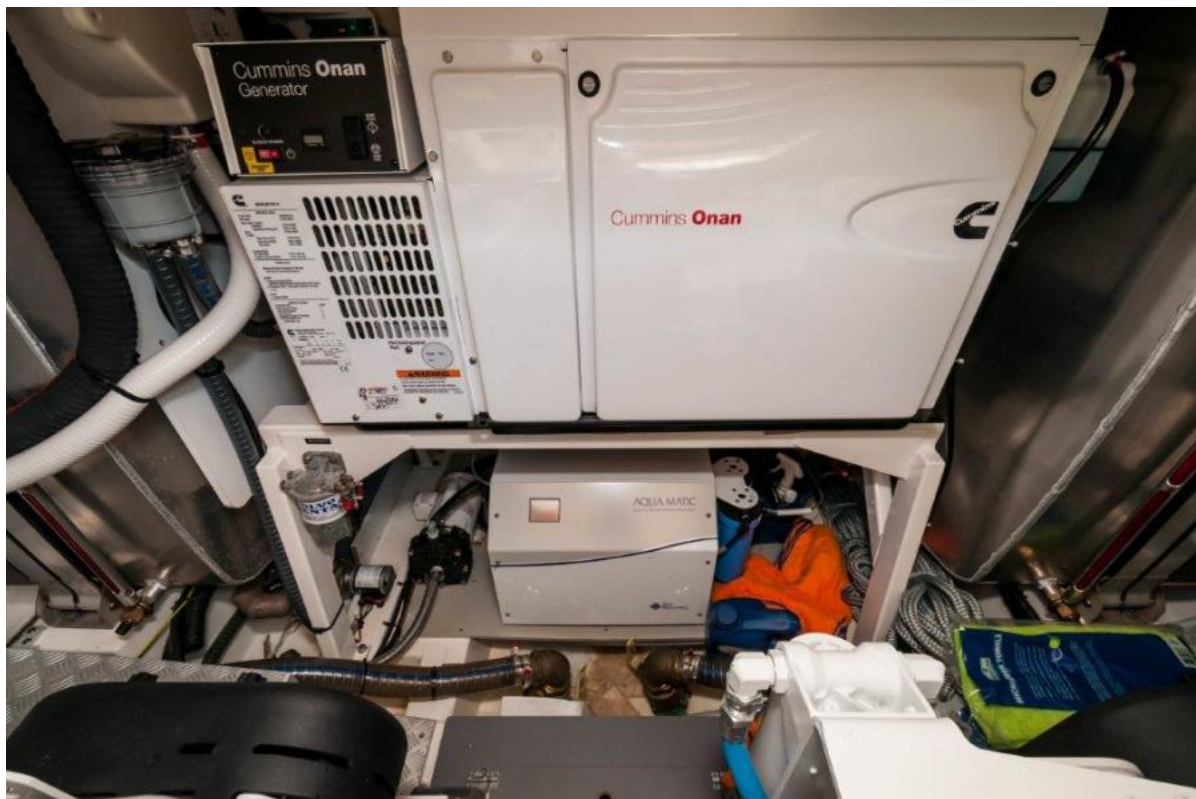
2017 Prestige 56 Flybridge Engine Room



2017 Prestige 56 Flybridge Engine Room



2017 Prestige 56 Flybridge Engine Room



2017 Prestige 56 Flybridge Generator



2017 Prestige 56 Flybridge



2017 Prestige 56 Flybridge



2017 Prestige 56 Flybridge



2017 Prestige 56 Flybridge Port Bow



2017 Prestige 56 Flybridge Port Profile



2017 Prestige 56 Flybridge Port Profile



2017 Prestige 56 Flybridge Starboard Bow



2017 Prestige 56 Flybridge Starboard Bow



2017 Prestige 56 Flybridge