



Barb E

39' (11.89m) 2008 Tiara Yachts 3900 Sovran
Naples Florida United States



OVERVIEW

Manufacturer:	Tiara Yachts		
Engines:	2 Volvo	Hull Material:	Fiberglass
Engine Model:	IPS 500	Cruise Speed:	
Engine HP:	370	Max Speed:	
Beam:	13' 11"	Cabins/Heads:	2 / 1
Max Draft:	"	Fuel Type:	Diesel
Water:	102 G (386.11 L)	Fuel:	300 G (1135.62 L)

\$299,000





Data Sheet

Category: Cruisers
Condition: Used
Model Year: 2008
Beam: 13'11" (4.24m)
Min Draft: 3' 5" (1.04m)
LOA: 39' (11.89m)
Cabins: 2
Sleeps: 4
Heads: 1

Fuel Type: Diesel
Hull Material: Fiberglass
Hull Shape: Modified Vee

Displacement: 23000 Fuel Tank: 300 gal
(1135.62 liters)
Fresh Water: 102 gal (386.11 liters)
Holding Tank: 38 gal (143.85 liters)
HIN/IMO: SSUMA073K708
Stock #: BR4820-DGS

Engines/Generators

Engine 1

Volvo
IPS 500
Inboard
370HP
Fuel: Diesel
Hours: 600
Location: Port

Engine 2

Volvo
IPS 500
Inboard
370HP
Fuel: Diesel
Hours: 600
Location: Starboard



Summary/Description

For Sale

"Barb E" is a clean well equipped 2008 39' Sovran with under 600 original hours. She's powered with the Twin Volvo IPS 500's, with Joystick Control. New pod drives were installed in 2018 with only about 50 hours of usage since. The Helm has 32000 btu dedicated Air Conditioning!

NEW since the owner purchased in 2018: Volvo Pod Drives, Garmin Electronics (2020), SAT TV (2020), painted the hull Metallic Blue (2020), painted the SAT domes and radar black and installed Flexiteek (2018) on the upper and lower cockpit decks and swim platform.

Engines, drives and generator have been serviced in the last month. The bottom paint has just been renewed. The hull and topsides are freshly waxed.

Hurry to schedule your showing; Barb E will not last long.

Accommodations

The Tiara 39 Sovran yacht interior features traditional teak cabinetry and bulkheads with satin finish and a solid teak and holly cabin sole. She has a wide-open cabin layout with 6'5" of head room. The private master stateroom is forward with queen size centerline pedestal bed and curved teak privacy doors. She has a complete galley with Corian counter tops. The dinette is on the port side with a beautiful high gloss teak and birds eye maple table. Aft to starboard is a sunken lounge/TV area that converts to a berth.

Salon/Dinette

Teak entry steps lead to the main cabin, with the dinette to port and galley to starboard. The sofa back converts to a pullman style berth.

- Sliding Lockable Door w/Screen
- Teak Entry Steps
- Solid Teak and Holly Cabin Sole
- Sofa, Ultraleather with Storage Under (Newly Upholstered)
- High Gloss Teak and Birds Eye Maple Table
- Bose Stereo/DVD
- AC/Heat Control
- Overhead Lockers
- Portlights, Opening (2)
- Hanging Locker, Cedar

Galley

The Galley is opposite the salon/dinette to starboard.

- Refrigerator/Freezer, Side by Side AC/DC
- Stove, Recessed 2 Burner Electric
- Microwave Oven
- Stainless Steel Sink

- Corian Countertops
- Corian Cover for Stove and Sink
- Cabinets, Upper and Lower
- Portlights, Opening (2)
- Waste Basket
- Dockside and Pressure Water System
- Water Tank Gauge

Master Stateroom

- Center Line Pedestal Bed
- Bed Spread and Pillows
- Hanging Lockers, Cedar (2)
- Flat Screen TV
- Teak Curved Sliding Privacy Doors
- AC/Heat Control
- Over Head Hatch with Sunshade and Screen

Aft Lounge/ Mid Cabin

This area is amidships to starboard, aft of the galley. The facing lounges convert to a berth.

- Lounges, Ultraleather (2) Convertible
- Flat Screen TV
- SAT TV (New 2020)
- Privacy Curtain

Head

- Full Frame Door with Entry from the Salon
- Stall Shower with Seat and Glass Door
- Corian Vanity Counter with Glass Vessel Sink
- Medicine Cabinet, Mirrored
- Linen Cabinet
- Vacuflush Toilet
- Teak and Holly Floor
- Waste Gauge
- Vent and AC

Upper Helm Area

- Tiara Factory Hardtop
- Helm Air Conditioning, Dedicated 32,000 BTU
- Center Window Vent, Electric
- Windshield Wipers
- Power Helm Seat
- Steering Wheel, Mahogany with Tilt
- L-Lounge Companion Seating, Port side w/Cover
- Wet Bar w/Refrigerator
- Fusion Marine Stereo w/Built in Wi-Fi plus Remote (New 2020)
- Overhead and Courtesy Lighting
- Flexiteek (Dec 2018)

Electronics and Navigation

- All Electronics are new in 2020.
- GPS/Plotter Garmin GPSMAP 8616 (2)
- Radar, Garmin GMR 424 xHD2
- Autopilot, Garmin Reactor 40
- Garmin Weather Antenna and Satellite Weather
- Radio, Garmin VHF315
- Garmin AIS 800 Transceiver
- Marine Instrument Display, Garmin GMI 20
- Volvo IPS Joystick Control
- Volvo Electronic Engine Controls and Displays
- Remote Controls for Windlass, Spotlight and Trim Tabs
- Compass
- Horns (New)

Mechanical and Engine Room

The engines and generator were serviced in May 2021. The drives were serviced in June 2021. New air charger coolers installed August, 2019.

- Electric Engine Hatch
- Fire Suppression System, Automatic and Manual
- Racor Fuel Filters
- Bilge Pumps
- Oil Change System (NEW June 2021)
- Holding Tank w/Overboard Discharge

Electrical

- Generator, 11.5 KW Onan w/Sound Shield
- 120/240v AC/12v DC System
- Glendenning Cable Master, 50 amp, 65"
- Adapter for 30-amp Service
- Battery Charger
- Battery Switches and Parallel System

Deck

The hull was painted metallic blue in 2020 and the bottom painted June 2021.

- Windlass with Footpads and Remote Control
- Anchor with Nylon Rode and Chain
- Spotlight
- Swim Platform with Swim Ladder
- Flexiteek installed in the Upper Helm and Lower Cockpit and Swim Platform (2018)



2008 3900 Tiara Sovran Profile



2008 3900 Tiara Sovran Helm And Seating



2008 3900 Tiara Sovran Salon Dinette



2008 3900 Tiara Sovran Galley



2008 3900 Tiara Sovran Master Berth



2008 3900 Tiara Sovran Sofa Converts To Over Under Berth



2008 3900 Tiara Sovran Mid Cabin



2008 3900 Tiara Sovran Galley



2008 3900 Tiara Sovran Master TV



2008 3900 Tiara Sovran Entertainment



2008 3900 Tiara Sovran Helm



2008 3900 Tiara Sovran Helm



2008 3900 Tiara Sovran Helm



2008 3900 Tiara Sovran Engine Hours



2008 3900 Tiara Sovran Upper Deck Companion Seating



2008 3900 Tiara Sovran Lower Cockpit Aft Facing Seat



2008 3900 Tiara Sovran Lower Cockpit Forward Facing Seat



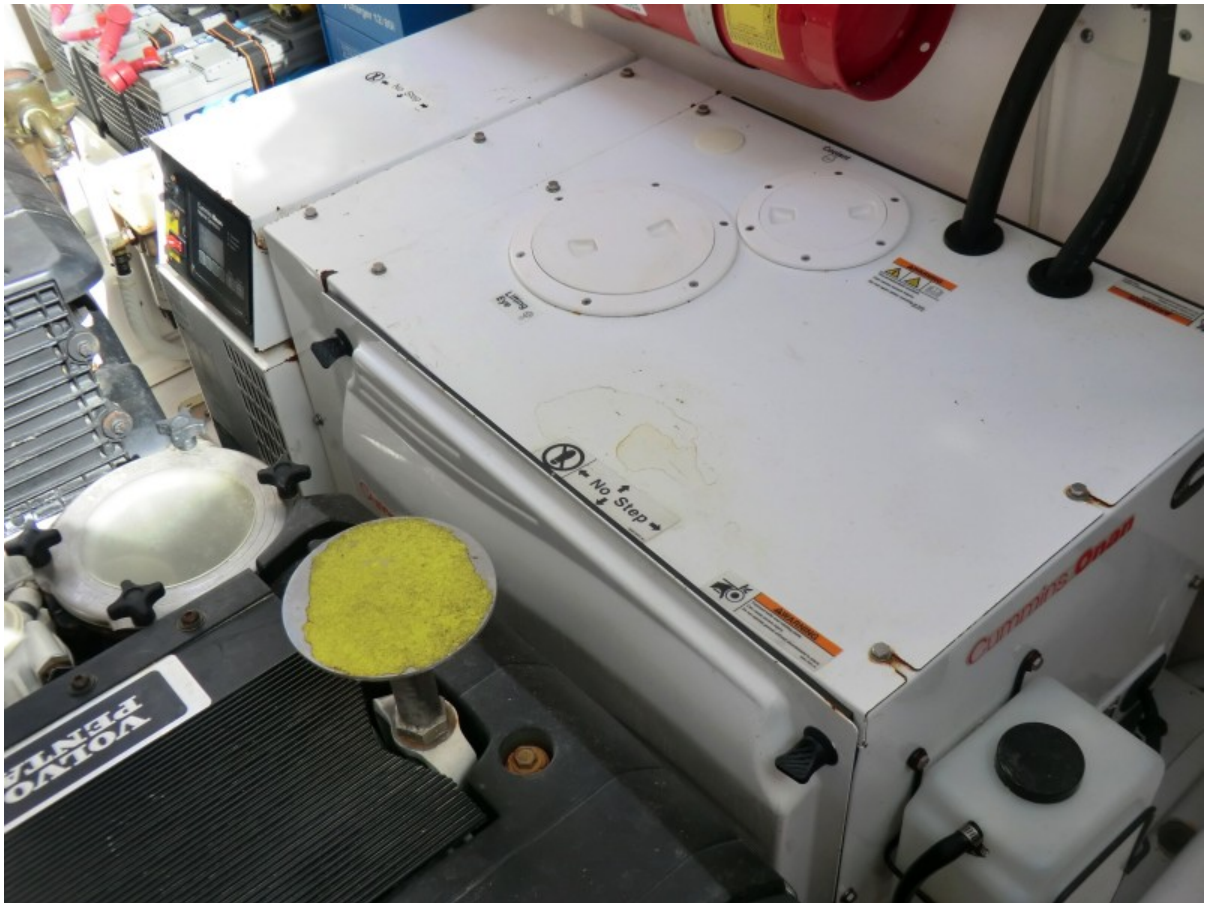
2008 3900 Tiara Sovran Cockpit Teak Decking



2008 3900 Tiara Sovran Swim Platform



2008 3900 Tiara Sovran Stern



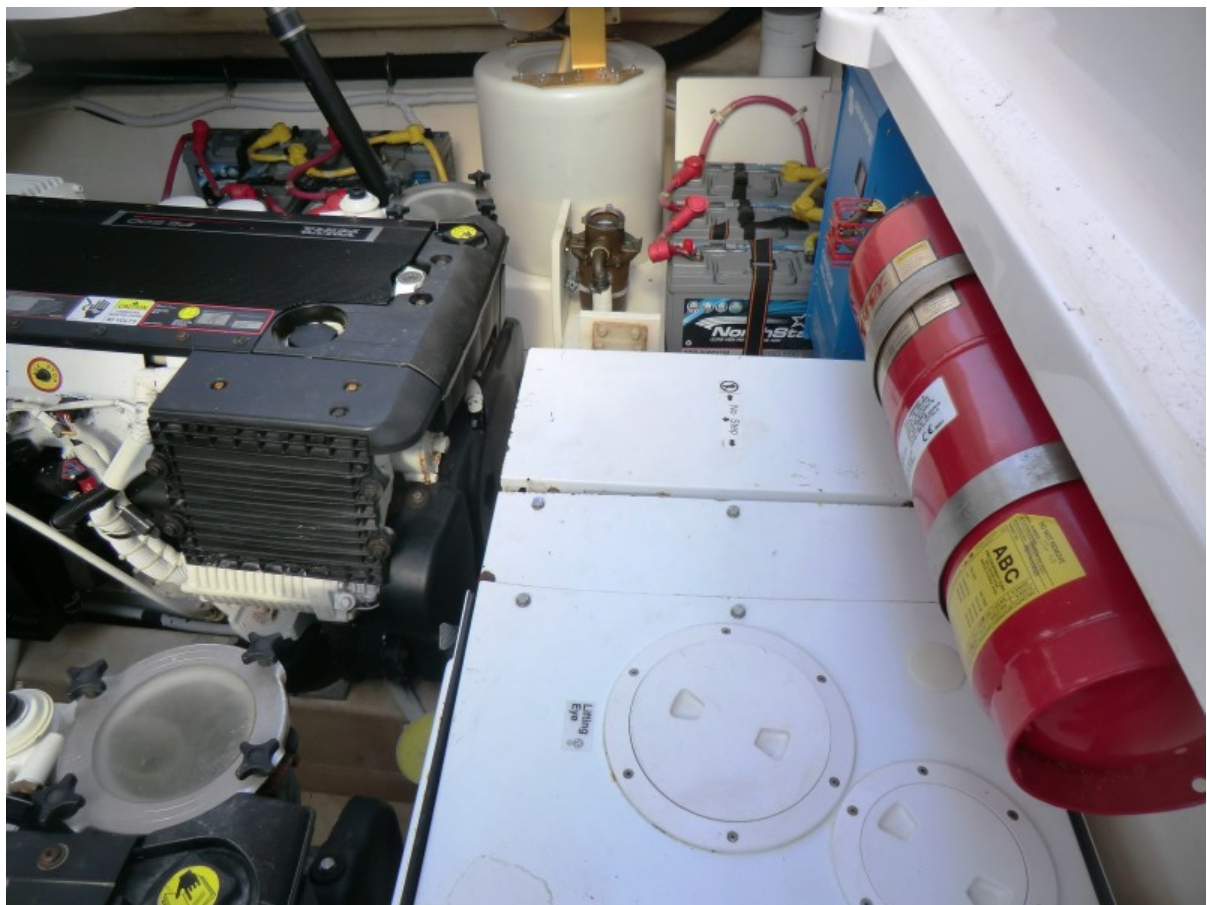
2008 3900 Tiara Sovran Generator



2008 3900 Tiara Sovran Batteries



2008 3900 Tiara Sovran Engine Oil Transfer



2008 3900 Tiara Sovran Engine Room



2008 3900 Tiara Sovran Engine Room



2008 3900 Tiara Sovran Port Engine



2008 3900 Tiara Sovran STB Engine



2008 3900 Tiara Sovran Bow



2008 3900 Tiara Sovran Stern



2008 3900 Tiara Sovran



2008 3900 Tiara Sovran