



# SUNSHINE

124' (37.80m) 1984 Lloyds Enclosed P.H w/ Sundeck  
Ft Lauderdale Florida United States



## OVERVIEW

**\$1,995,000**

Manufacturer:	Lloyds	Hull Material:	Aluminum
Engines:	2 Caterpillar	Cruise Speed:	12 Knots
Engine Model:	34E12	Max Speed:	15 Knots
Engine HP:	1250	Cabins/Heads:	5 /
Beam:	25' 6"	Fuel Type:	Diesel
Max Draft:	"	Fuel:	12000 G (45424.92 L)
Water:	5200 G (19684.13 L)		



## Data Sheet

Category: Motor Yachts  
Condition: Used  
Model Year: 1984  
Refit Year: 2014  
Beam: 25'6" (7.77m)  
Min Draft: 7' 5" (2.26m)  
LOA: 124' (37.80m)  
(0.00m)  
Cabins: 5  
Sleeps: 12  
Pullmans: 1  
Double Berths: 2  
Queen Berths: 2  
King Berths: 1  
On Deck Master: Yes

Crew Cabins: 4  
Captain's Quarters: Yes  
Crew Sleeps: 7  
Crew Mess: 1  
Maximum Speed: 15 Knots  
Cruise Speed: 12 Knots  
Range NM: 3300  
Fuel Type: Diesel  
Super Structure Material: Aluminum  
Hull Material: Aluminum  
Hull Shape: Semi Displacement  
Hull Finish: Awlgrip  
Special Offer: Yes  
Air Conditioning: Yes

Gross Tonnage: 281  
Displacement: 186 tonnes  
Stabilizers: Standard  
Stabilizer Brand: Naiad  
Fuel Tank: 12000 gal (45424.92 liters)  
Fresh Water: 5200 gal (19684.13 liters)  
Holding Tank: 330 gal (1249.19 liters)  
Builder: Lloyds  
Designer: Janet Martin  
Interior Designer: Janet Martin  
Exterior Color: Blue

## Engines/Generators

### Engine 1

Caterpillar  
34E12  
Inboard  
1250HP  
Fuel: Diesel  
Hours: 10405  
Hours Date: 05-06-2021  
Year: 2003  
Location: Port

### Engine 2

Caterpillar  
34E12  
Inboard  
1250HP  
Fuel: Diesel  
Hours: 10386  
Hours Date: 05-06-2021  
Year: 2003  
Location: Starboard

### Generator 1

Northern Lights  
80KW  
Hours: 7102  
Hours Date: 05/06/2021

### Generator 2

Northern Lights  
80KW  
Hours: 9388  
Hours Date: 05/06/2021



## Summary/Description

SUNSHINE was built in 1984 by Lloyds Ships with exterior design and engineering by Fratelli Benetti. Since then, she underwent a massive rebuild in 2003 that included new main engines and complete rebuilding of the engine room. In 2014 she underwent a complete multimillion dollar refit.

The 124-foot (37.80m) Lloyds Ships motor yacht SUNSHINE is a ray of light for anyone who steps aboard. Built in 1984, this classic beauty features exterior design and engineering by

Fratelli Benetti.

**Sunshine is offered on a “Lease to Own program” with 40% down, 30% in 35 equal monthly payments, and 30% on the 36<sup>th</sup> month.**

SUNSHINE has been well maintained since her launch, undergoing a multitude of refits, rebuilds, and updates. In 2003, she was fully rebuilt. This rebuild included the addition of new main engines and the total rebuild of her engine room and all technical spaces aboard. In 2014, the yacht underwent a multimillion-dollar refit. Janet Martin updated and restyled the yacht’s interior to top condition, providing the yacht with an entirely new aesthetic that is both welcoming and chic. SUNSHINE features an aluminum hull and superstructure. She has three decks for guests to enjoy.

The yacht has a seven-foot, six-inch (2.28m) draft and a beam of 25 feet, six inches (7.77m). SUNSHINE’s interior layout ensures she has excellent charter potential. The yacht is available for a three-year lease-to-purchase option with zero interest.

## BROKER'S COMMENTS

Sunshine is offered on a “Lease to Own program” with 40% down, 30% in 35 equal monthly payments, and 30% on the 36th month.

Fresh bottom job completed NOV 2021.

## CHARACTERISTICS

- Builder: Lloyds Ships
- Year: 1984
- Refit: 2003/2014
- LOA: 124 ft. (37.8m)
- Beam Overall: 25’06” (7.77m)
- Draft (Half Load): 7’06” (2.3m)
- Hull Material: Aluminum
- Superstructure: Aluminum
- Decks: 3

- Flag: USA
- Naval Architect: Lloyds Ships
- Exterior Designer/Stylist: Fratelli Benetti
- Interior Designer: Janet Martin
- Main Engines: Caterpillar 3412E, installed in 2003
- Max Speed: 15.9 Knots
- Cruising Speed: 12.5 Knots
- Range: 3,300 nm
- Stabilizers: NAIAD
- Electrical 110V interior, 60Hz
- Displacement (Fully Loaded) 186 long tons
- Gross Tonnage: 281
- Guest Accommodations: 5 cabins for 12 guests
- Crew Accommodation: 4 cabins for 7 crew

## WALKTHROUGH

- LOWER DECK: 4 cabins, 2 VIP King aft cabins (aft of the engine room), and two twin cabins w/ bunk bed (6 beds total) forward of the engine room.
- MAIN DECK: Master cabin
- BRIDGE DECK: Captain's Personal Cabin
- SUNDECK: Relax in one of the two captain's chairs on port or starboard side. Aft, there are two chaise lounges for those wanting to soak up the rays aboard SUNSHINE. The Sundeck aboard SUNSHINE offers some of the best views along with the ultimate sun lounging space. Very comfortable stairs on the starboard side aft lead down to the bridge deck level. This entire level is finished with teak decks.
- BRIDGE DECK: As you descend down the steps from the flybridge on the starboard side, you will arrive on the bridge deck aft level. This area is set up with alfresco dining. Aft of the dining area is (six) chaise lounges for sunbathing. All the way aft, is the 18' Nouvarania tender with 150 motor that is lifted with the is 2,500 lb. davit. The exterior bridge deck level has full walk-around decks which lead forward to the Portuguese bridge with stairs forward leading to the foredeck.
- SKY LOUNGE: Moving forward from the bridge deck aft you enter the sky lounge through a glass bulkhead with double electronic sliding doors. The sky lounge is filled with natural light through the extralarge windows on both port and starboard sides. There are matching settees and coffee tables to port and starboard. The forward port side of the sky lounge offers a full wet bar with a new ice maker and drinks refrigerator. On the center is a 46" TV operated by a Logitech control system. On the starboard side going forward into the foyer is the bridge deck level day-head.

- **WHEELHOUSE:** Fitted with a settee for guests to visit. The large bridge windows offer unobstructed views for navigation. There is a bench seat aft and a Stidd helm chair for the Helmsman. Doors on both port and starboard sides lead out to the wing stations for docking. The port side of the bridge is access to the captain's cabin. Captain's Cabin has full ensuite facilities and a writing desk.
- **MAIN DECK:** Aft Deck: Starting from the stern going forward the aft deck is an amazing place for both socializing and dining. There is a full wrap-around settee aft, two tables, with a space in the center for access, and four chairs. A clear, removable enclosure surrounds the aft section, which allows this area to be used in all weather conditions. There are stairs on both port and starboard side aft leading down to the swim platform. The portside forward bulkhead has a circular stair up to the bridge deck aft. Forward of the stairs is an ice maker and cocktail glass storage. The Starboard side features a fold-up buffet table and on the forward bulkhead is a drinks refrigerator. Outboard to port and starboard are full walk-around decks to the foredeck.
- **MAIN SALON:** Moving forward you enter the main salon through a glass bulkhead with double electronic sliding glass doors. To port and starboard are matching settees and coffee tables. On the starboard side are stairs leading down to the two aft VIP cabins. Forward on the port side is the main dining area with seating for eight. On the forward bulkhead is stemware and china storage. Moving forward on the starboard side toward the main foyer is the main deck day head.
- **STUDY/LIBRARY:** Forward of the main saloon and aft of the master cabin on the port side is the study. This area features a very large window, a working desk, shelves for books. Perfect place for reading or used as a small child's cabin, who needs to sleep close to the master cabin.
- **MASTER SUITE:** Perfectly located on the main deck, midships, ensuring the most comfortable ride at sea. Fitted with a king berth, extralarge windows with amazing views, makeup vanity, and lots of storage for garments. The master bath features double washbasins and an extralarge walk-in shower.
- **GALLEY:** A Chef's delight. Perfectly located with proper separation of the chef from the service area used by the stewardesses. This design and space are equal to that found on 150' yachts. For extended cruising, there is also a full walkin refrigerator and freezer in addition to the standard reefer found in the galley. Starboard side forward is the crew mess. As with the rest of the yacht, there are massive windows allowing an abundance of natural light.
- **LOWER DECKS:** VIP Cabins: There are two VIP suites located downstairs from the starboard side of the main saloon. Both suites offer king berths. The aft VIP suite features lots of drawer storage and a full hanging closet. The ensuite head features a large walk-in shower and double washbasin. The forward VIP suite is full beam and equal to what is typically considered a master cabin. The port side of this cabin features a large ensuite head with a shower and Jacuzzi soaking tub. The cabin offers lots of garment storage, a full hanging closet, and a writing desk.
- **FORWARD LOWER GUEST SUITES:** Entered from the main deck foyer forward, separate from the VIP cabins are two twin suites. Each suite's inboard berth has an over/under configuration allowing for the accommodation of

three in each cabin. Each cabin offers full ensuite heads with walk-in showers.

- **CREW QUARTERS:** The crew quarters are located forward. There are three cabins. The engineer has his own cabin on the port side with its own ensuite head and shower. Forward to that, there are two more cabins on the port and starboard side. The port side has two over and under berths. The Starboard side has two over-under berths. The two forward crew cabins share a head and shower, accessed by a common area. The engineer's cabin has its own head.

## CONSTRUCTION

- Hull: Aluminum
- Superstructure: Aluminum
- Decks: 3
- Paint: Insignia white Awlgrip House and Blue Hull

## CAPACITIES

- Tonnage: Gross Tonnage: 281
- Displacement: 186 long tons
- Fuel Capacity: 12,000 (45,425 liters)
- Water Capacity: 5,200 (19,684 liters)
- New in 2019 Reverse Osmosis watermaker - Dometic Sea Exchange 2,000 gallons per day
- Lube Oil: 600 US Gal (2,271 liters)
- Waste Oil: 450 US Gal (1,703 liters)
- Black Water: 330 US Gal (1,249 liters)
- Grey Water: 330 US Gal (1,249 liters)
- Maximum Speed: 15.9 Knots / Consumption: 120 G/H / Range: 1,300 nm
- Cruising Speed: 12.54 Knots / Range: 2,500 nm
- Economical: 10.5 Knots / Consumption: 30 G/h / Range: 3,300 nm

## MAIN MACHINERY

- Main Engines: Caterpillar 3412E, installed in 2003
- Main Engine: **Port:** 10,405 hours (May 2021) - **Stbd:** 10,386 Hours (May 2021)
- Engine Controls: ZF and Micro Commander electronic controls with wing stations
- Gear Boxes: ZF 2150 2.959:1 ratio
- Shafting: 4" SS
- Propellers: 48.75 x 38.5 Nibral 4 blade 4" hub class S

## Generators & Electricity

- Generators: 2 x Northern Lights 80KW each, 60 Hz
- Generator Hours: **Port:** 7,102 hours (May 2021) - **Stbd:** 9,388 Hours - Rebuilt (October 2015)
- Generator Fuel Consumption: 6 g/h
- Shore Power: 2 x 100 AMP variable voltage Asea power
- Output: 400/240 volts 60Hz
- Batteries: 24 V Gel

## ANCILLARY MACHINERY

- Air Conditioning: 20-ton Aqua Air 240,000 BTU 2011 new chillers, 2014 & 2019 two refurbished chillers
- Air Compressor: Quincy 80 US gallon tank
- Bow Thruster: Wesmar hydraulic 4-blade counter-rotational 60HP
- Fresh Water Filters: Pura Filtration with UV
- Fresh Water Heaters: 2 x 60 Gal 1 x 30 Gal Household
- FreshWater-Maker: New in 2019 - Dometic Sea Exchange 1.5 GPM
- Fresh Water Pumps: Head Hunter
- Fuel Separator: Alfa Laval, MIB 303S13 Pumps
- Fuel Filters: Racors
- Oily Water Separator: N/A
- Oil Pumps: Clean and Dirty
- Shore Power Transformer: 2 x ASEA 45KVA (total: 90 KVA) Sewage System
- Sewage Treatment System: Hamman Super Mini
- IMO compliant: MEPC.2 (VI)
- Vacuum Toilet System: Microphor
- Stabilizers: Naiad
- Steering System: Custom
- Under Water Lights: 6 x Extreme Underwater Lights around the stern
- Helm/Control Stations: Microcommander, three helm stations/bridge plus two wing stations.

## DECK MACHINERY & EQUIPMENT

- Anchors: 2 x 500LBS Danforth
- Anchor Chains: 2 x 450ft 5/8 stud link chain
- Anchor Windlass System: Maxwell double anchor windlass with two gypsies
- Aft Warping Capstans: Muir 2 on the aft deck
- Boat Crane: Nautical Structures 2500 LBS on the aft deck, rebuild August 2015
- Davits: Nautical Structures 1500 LBS Davit on the foredeck for Jet Skies
- Stern Boarding Gangway: Marquip Manual
- Spotlights: 2 x 15" Carlisle and Finch
- Jacuzzi: on Sundeck
- Paint Exterior: Awlgrip Insignia White House and Blue Hull

## SECURITY, FIRE FIGHTING & SAFETY EQUIPMENT

### Security Equipment

- CCTV: Simon
- Cameras: 4 x Pelco remote-controlled surveillance cameras
- Ship's Safe: In each guest cabin, plus captains cabin

### Fire Fighting Equipment

- Fire Control System: Honeywell Firelite
- Portable CO2: 42
- Fire Extinguishers: Halon Engine Room
- Alarms: MariTron



## **Safety Equipment**

- Life Rafts: 2 x 8 persons RFD MK4 and 2 X 12 Person RFD MK4
- Life Rings: Two with smoke, two with light
- EPIRBS: 406 EPIRB
- Flares: Extensive range flare kit
- Medical Equipment: MedAir A package

## **ENTERTAINMENT & A/V EQUIPMENT**

### **Main Saloon**

- DVD: Samsung
- TV: 40" Samsung
- Stereo: Yamaha
- I Pod Station: Apple TV

### **Master Cabin/Main Deck**

- TV: 46" Samsung
- DVD: Samsung
- Stereo: Onkyo (aft)
- Stereo: Yamaha (forward)
- I-Pod Station: Apple TV

### **2 VIP Cabin/ Lower Deck**

- TV: 40" Samsung (Forward King) / 28" Samsung (Aft King)
- DVD: Samsung
- Stereo: Yamaha
- I Pod Station Apple TV

### **2 Guest Cabins/ Lower Deck**

- TV: 32" Samsung
- DVD: Samsung
- Stereo: Yamaha
- I Pod Station Apple TV

### **Sky Lounge**

- DVD: Samsung
- TV: 46" Samsung
- Stereo: Yamaha
- I Pod Station Apple TV

### **Captain's Cabin**

- TV: 32" Samsung
- I Pod Station Apple TV

### **Crew Mess**

- I Pod Station Apple TV
- V: 26" Samsung

### **Crew Cabins**

- TV: 21" Toshiba
- I Pod Station Apple TV

### **Laundry**

- TV: 19" Seiki

## **NAVIGATION SYSTEMS & EQUIPMENT**

### **Communication Systems**

- Satcom: FB 250 + VoIP
- SAT-TV: High Definition S80HD
- Telephone System: Panasonic
- SSB: Furuno FS1503
- VHF: Fixed 2 x ICOM M506
- VHF: Handheld 4 X ICOM M88
- Intercom: Panasonic
- VSAT: V100 GX Global Express
- Furuno Loud Hailer

### **Navigation Systems**

- Electronic Charts: Triton Nobeltec
- Garmin GPS map 7608
- 2 x New "Black Box" radar Furuno with 2 x Furuno RCV V-14 Keyboards
- Gyrocompass: Furuno THD SC50 satellite Compass
- AutoPilot: Anschütz Pilotstar D
- Depth Sounder: Furuno RD30
- Video Sounder: Furuno DFF1
- GPS: Northstar 952X
- Ships Computer: 2 apple mini in the wheelhouse
- Wind Indicator Furuno RD33
- Navtex:Furuno NX 330 Navtex

- AIS: Furuno AIS FA150

## **GALLEY & LAUNDRY EQUIPMENT**

### **Main Galley Equipment**

- Cooking Equipment: Miele Induction 2 x Miele Ovens
- Refrigeration/Freezer: WalkIn Fridge and Freezer, 3 x under-counter refrigerators
- 2 x GE Monogram Professional undercounter fridges in Skylounge and afterdeck
- 2 x two Manitowoc Ice makers in skylounge and aft-deck, one wine refrigerator in Main Salon
- Dishwasher: 2 x Miele under counter

### **Laundry Equipment**

- Miele industrial grade washing machine and dryer
- XL LG washing machines and dryer in Lazarette

## **2014 REFIT**

- New VSAT
- New SAT TV in HD
- Entire interior wood refinished Complete new A/V system New Wifi system
- Electric sliding doors on main deck aft and bridge deck aft Mast completely restyled
- New headliners, carpeting, wall covering,s and linens.
- Crane and davit rebuilt

## **2015 REFIT**

- Starboard generator rebuilt
- Both water makers rebuilt
- Shaft and engine alignment, new seals and bearings
- Both rudder bearings
- 2 x new stabilizer fins, rams and PTO's rebuild Bottom job
- New valves on through-hulls 70% complete Anchors and chains galvanized
- New antifouling and zincs
- New bilge and raw water pipes for generator Both jet skis rebuilt
- Tender service, including new cushions, speakers and batteries New varnish on caprail
- Blister removal on hull aft section and aft deck seating repainted Rudder sleeves replaced
- All tanks cleaned, water tanks sandblasted New nonskid on the swim platform
- 2 x 8 person liferafts

## **Disclaimer**

The company offers the details of this vessel in good faith but cannot guarantee or warrant the accuracy of this information nor warrant the condition of the vessel. A buyer should instruct his agents, or his surveyors, to investigate such details as the buyer desires validated. This vessel is offered subject to prior sale, price change or withdrawal without notice.

## **Mechanical Disclaimer**

Engine and generator hours are as of the date of the original listing and are a representation of what the listing broker is



told by the owner and/or actual reading of the engine hour meters. The broker cannot guarantee the true hours. It is the responsibility of the purchaser and/or his agent to verify engine hours, warranties implied or otherwise and major overhauls as well as all other representations noted on the listing brochure.



































































































































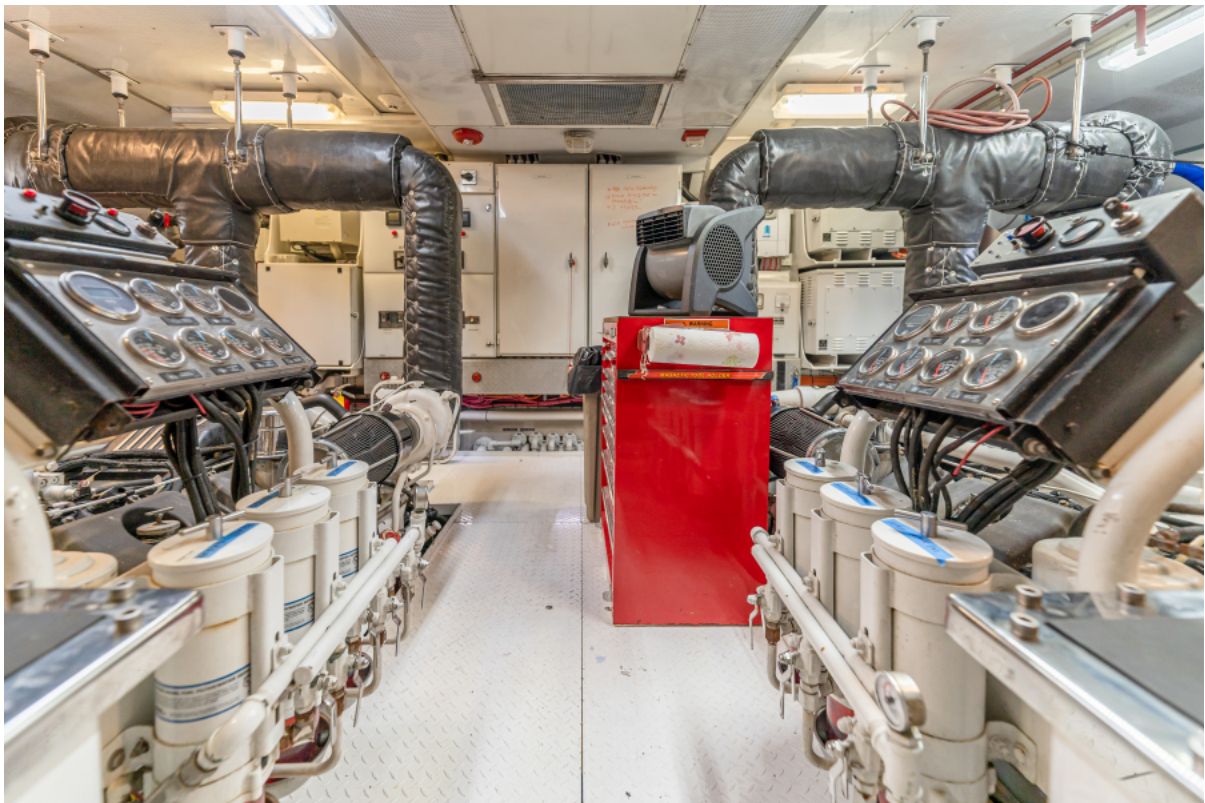








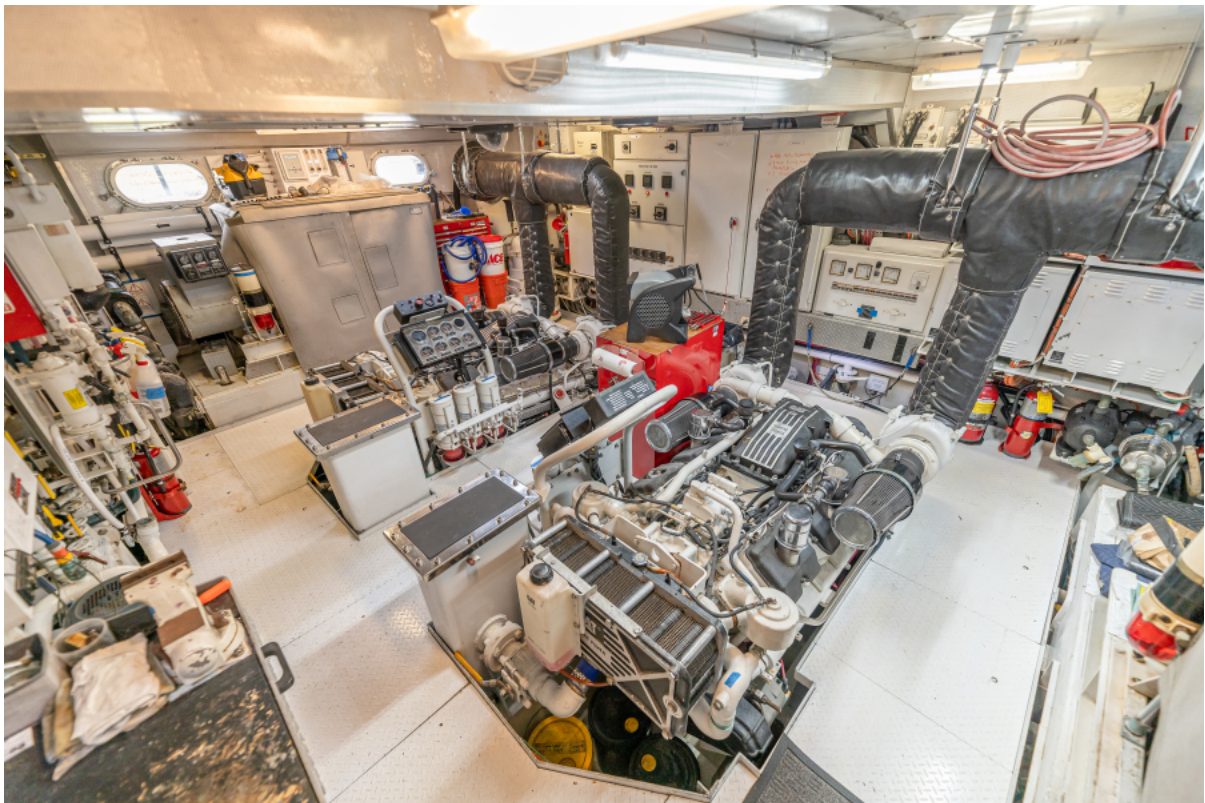


































**SUNSHINE, 124' (37.80m) Lloyd's Ships Motoryacht, 1986 /2014**