



WILLOW

46' (14.02m) 2006 Oyster 46
Portsmouth Rhode Island United States



OVERVIEW

Manufacturer:	Oyster	Hull Material:	Fiberglass
Engines:	1 Volvo	Cruise Speed:	7.5 Knots
Engine Model:	D2-75	Max Speed:	Knots
Engine HP:	75	Cabins/Heads:	3 / 2
Beam:	14' 6"	Fuel Type:	Diesel
Max Draft:	7' 1"	Fuel:	211 G (798.72 L)
Water:	185 G (700.3 L)		

\$499,000



Data Sheet

Category: Cruisers

Condition: Used

Model Year: 2006

Beam: 14'6" (4.42m)

Max Draft: 7' 1" (2.16m)

LOA: 46' 10" (14.27m)

LWL: 40' 7" (12.37m)

Cabins: 3

Sleeps: 6

Single Berths: 2

V Berths: 1

Queen Berths: 1

Heads: 2

Knots

Cruise Speed: 7.5 Knots

Fuel Type: Diesel

Hull Material: Fiberglass

Hull Shape: Monohull

Hull Finish: Gelcoat

Air Conditioning: Yes

Displacement: 39700 Fuel Tank: 211 gal
(798.72 liters)

Fresh Water: 185 gal (700.3 liters)

Builder: Oyster Marine

Designer: Rob Humphries/Oyster Design
Team

Exterior Color: White

HIN/IMO: OYM0100PE606

Engines/Generators

Engine 1

Volvo

D2-75

Inboard

75HP

55KW

Fuel: Diesel

Hours: 2300

Hours Date: 04-01-2021

Year: 2006

Location: Middle

Generator 1

Mastervolt

Whisper

8KW

Hours: 1200

Hours Date: 04/01/2021

Summary/Description

Recent upgrades include new refrigeration, Raymarine electronics and solar panels for true off-grid cruising. New full cockpit enclosure.

WILLOW is an Oyster 46, meticulously maintained and fully equipped for offshore sailing. She is fast and safe, with electric in-mast furling, Harken roller furling genoa, electric winches, new asymmetric spinnaker (2019), and storm sail on removable inner forestay. She has a 3-cabin/2-head layout with large queen in aft stateroom, full V-berth forward, and over/under guest bunks midships. WILLOW is fully equipped for long distance sailing with solar, generator, Simpson dinghy davits and a full complement of safety equipment.

The Oyster 46 is a highly versatile design capable of a Caribbean sabbatical as well as Coastal Cruising.

WILLOW's beautiful teak interior, with three cabins and two heads, accommodates up to six guests. She is currently being sailed by a couple with cruising grounds in New England, Bermuda, the Caribbean, Bahamas and the Gulf of Mexico.

Recent upgrades include new refrigeration, Raymarine electronics and solar panels for true off-grid cruising.

INTRODUCTION

Come see WILLOW on display at the

Newport Brokerage Boat Show September 16-19 at the Newport Shipyard, Newport, RI

WILLOW is an Oyster 46, meticulously maintained and fully equipped for offshore sailing. She is fast and safe, with electric in-mast furling, Harken roller furling genoa, electric winches, new asymmetric spinnaker (2019), and storm sail on removable inner forestay. She has a 3-cabin/2-head layout with large queen in aft stateroom, full V-berth forward, and over/under guest bunks midships. WILLOW is fully equipped for long distance sailing with solar, generator, Simpson dinghy davits and a full complement of safety equipment.

CONSTRUCTION

- Oyster G5 styling
- Single skin solid GRP hull with white Gelcoat, blue boot stripe and blue cove stripe
- Fin keel with externally attached modified lead bulb keel
- Skeg-hung rudder for maximum protection at sea
- Cored deck for weight saving and stiffness, balsa core except in areas of deck hardware or loads
- Teak toe rail
- Stainless steel mooring cleats
- Teak laid side decks and cockpit
- Non-skid on deck areas without teak (new, 2014)

- Spacious cockpit that is both comfortable and protected
- Athena Whitlock pedestal steering
- Access to sail handling controls from the cockpit
- Sugar scoop-style transom with steps
- Swim platform with hot and cold deck shower

ACCOMMODATIONS

- Sleeps six in three cabins
- Teak joinery is substantial, well-fitted and finished to a high level
- Teak soles
- Air conditioning

Forward Cabin:

V-berth with filler piece. Storage in lockers and drawers. Split mattress with lee cloth. Large Lewmar deck hatch with OceanAir sky screen for ventilation and privacy.

Twin Cabin to Port:

Twin-bunk berths with storage beneath. Hanging locker. Lewmar hatch with OceanAir sky screen. Lee cloths.

Guest Head to Starboard:

Manual Jabsco head. Vanity with Avonite countertop. Mirror and storage. Receiver-style shower and curtain.

Main Saloon:

Large L-shaped settee to port with teak dining table that folds across the saloon to accommodate dining for six or seven. Bottle stowage locker beneath the table. All settee bottoms and backs are removable to access storage areas and systems. To starboard is a large base cabinet locker forward of the settee. Bar locker with glass storage. Trademark Oyster opening forward saloon windows with OceanAir blinds.

Nav Station:

Forward-facing chart table with opening top. Instruments are mounted in removable panels. Electrical distribution panel for DC and AC loads on bulkhead behind nav station.

Galley:

Walk-through galley to port with Force 10 4-burner propane stovetop and oven. Microwave. Twin stainless steel sinks. Frigoboat refrigerator and freezer (new 2019.) Opening Gebo port to cockpit, opening Gebo hullport outboard of stove.

Owners Cabin:

Island berth with drawer storage underneath. Hanging locker, cabinets and desk/vanity table. Opening hullport windows. Large Lewmar overhead hatch. En-suite head with shower stall. Jabsco toilet with holding tank.

ENTERTAINMENT EQUIPMENT

- 40" Samsung TV mounted in saloon with infrared remote switching
- Cambridge Audio 2.1 mini speaker system
- Alpine 6.5 coaxial speaker set
- Alpine double-DIN DVD
- New JL Audio 6.5 all-weather speakers in cockpit
- 29" Samsung F4000 Series mounted TV with Samsung 2D Blu-Ray DVD in master stateroom

DECK EQUIPMENT**Deck Hardware:**

- Lewmar blocks and tracks
- Harken headsail furler

Steering:

- Whitlock pedestal with compass
- Engine start/stop and single-lever throttle and gear control
- Lewmar wheel

- **Davits:**

- Simpson Cooney 225 stainless davits

Winches:

All winches by Lewmar

- (2) 58 CEST electric primary winches
- (2) 44 CST mainsheet winches (port winch is electric 44 CEST)
- (1) 44 CEST winch under dodger (mainsheet/outhaul)
- (2) 44 CST winches on mast

Hatches:

- Lewmar alloy-framed deck hatches
- Gebo alloy-framed portlights in coaming
- Gebo opening hullports

- Canvas covers for all hatches

Anchoring:

- Lewmar windlass with foot switches at bow and remote control at helm
- 60 lb. CQR-style anchor with 260 feet of chain
- Fortress 60 lb. secondary Kedge anchor w/ 59'-5/8" chain and 250 foot rode

Deck Equipment Updates:

- Heavy duty (700 lb. capacity) stainless steel hoist with 4/1 pulley and 50 feet of line installed on Port side stern for dinghy engine hoist or MOB retrieval. (2018)
- Replaced wire lifelines with solid stainless steel rails from midships to stern pulpit. Creates safer handholds and more space to mount grill, safety equipment, kayak/paddleboard cradles, dive tank holders etc. (2019)

CANVAS

- Sunbrella "Toast" dodger and bimini
- Full cockpit enclosure with zip-on panels and interchangeable sunscreen aft (new 2020).
- Stainless steel grab rail at aft edge of dodger
- Pedestal and wheel cover
- Covers for all hatches

RIG and SAIL HANDING

Rigging:

- Electric in-mast furling sloop rig
- Formula spars
- Removable forestay and adjuster
- Manual boom vang
- Wire rigging
- Windex and VHF at masthead
- Radar reflector
- Harken manual headsail furler

Sails:

- North Sails mainsail (2014)
- North Sails 150% genoa
- North Sails 110% yankee (2012)
- Doyle asymmetrical cruising spinnaker (2018)
- Storm jib in "Safety Orange"
- Sails inspected by North Sails

ENGINE/MACHINERY

Engine:

- Volvo D2-75, 4-cylinder 55 kW (75 hp), turbocharged electronic common rail diesel with 150S S-Drive gearbox (2,300 hrs. - April, 2021)
- Ambassador rope cutter on sail drive
- Three-bladed Gori prop (new 2018)

Generator:

- Mastervolt Whisper 8 kW (upgraded from 6 kW) generator – 220V (1200 hrs. - April, 2021)

Bow Thruster:

- MaxPower tunnel CT100, 7 hp

Climate Control:

- Cruisair 16,000 BTU air conditioner in saloon
- Cruisair 10,000 BTU air conditioner in owner's cabin

Refrigeration:

- Frigomatic DC system in upright chest; keel cooled (2019)
- Frigomatic DC freezer box; K50 compressor with evaporator plate; under counter next to fridge; keel cooled (2019)

TANKAGE

- Fuel: 211 U.S. gallons (GRP tank)
- Water: 185 U.S. gallons (GRP tank)
- Tank tender gauge located at nav station

Hot Water:

- 11 gallon hot water heater, operates both from engine cooling loop, as well as AC immersion heater (new 2018)

Water System:

- Twin-Max pressure pump with accumulator tank

Holding:

- Polypropylene holding tanks with Wema gauges for each head (2) with gravity and deck discharge

ELECTRICAL SYSTEM

- U.S. wired 230 V, 50 amp, 60 hz
- 110 V outlets in owner's cabin, galley and nav station

Batteries:

- 24 V DC domestic battery bank with 460 amp hours. (new 2017)
- Separate 12 V battery for engine and generator start, 88 amp hours each
- Emergency parallel link

Battery Chargers:

- Mastervolt chargemaster 100
- Mastervolt chargemaster 80
- Charge controller

Inverter:

- Mastervolt 2000

Alternators:

- (1) 60 amp engine- and (1) 100 amp domestic alternator with regulator

Shore Power:

- 50 amp shore power plug with Hubbell socket

Lighting:

- Interior LED lighting flush-mounted into headliners (new 2018)
- Additional reading lamps at each berth
- Red courtesy lights at saloon steps and sole level
- Ocean LED X series spreader-mounted mast lights (new 2018)
- LED transom lights (new 2018)

Solar:

- 572 total watts solar

220 watts of Solara Ultra S series walkable solar panels mounted on foredeck:

- (2) Solara Power M 110W Panel
- (2) Victron SmartSolar MPPT 75/10

352 watts solar from five individual flexible panels sewn into top of Bimini:

- (2) Solbian SP 52L - 10.9V - 1.8 lbs. - 44.0" x 11.7"
- (1) Solbian SP 144 - 30.0V - 4.2 lbs. - 59.0" x 21.7"
- (2) Solbian SP 52Q - 10.9V - 1.8 lbs. - 24.0" x 21.7"

Each flexible panel has its own controller:

- (5) Genasun MPPT Boost Charge controller Pb 105W 12V

USB:

- 12V and dual USB ports installed in the cockpit (2018)
- 12V and dual USB ports installed inside at Nav station (2018)

NAVIGATION and COMMUNICATION EQUIPMENT

Compass:

- Binnacle-mounted S.I.R.S. Major

Instruments:

- Raymarine ST60 instrument pack

Companionway Console:

- Speed/Analog wind/Depth

Chart Table:

- Raymarine E80 repeater to Acer 20" display. MFD (multi-function display)

GPS/Plotter/Radar:

- Raymarine eS Series 12" at helm (2018)
- Raymarine eS series 9" under dodger (2018)
- 15" smart screen wired into eS Raymarine 9" MFD located at nav station with remote keypad (2018)
- Sirius satellite weather interface

AIS:

- Raymarine AIS 700 Class B transceiver/splitter (new 2019)

Radar:

- 4 kW HD Radome on mast (2017)

Autopilot:

- Raymarine ST7000 autopilot
- ST6002 control head for autopilot on pedestal

Navigation/Deck Lights:

- Aqua Signal 41 bow and stern lights
- Steaming/deck floodlight
- Tri-color anchor/navigation light at masthead
- Boom lights

Windex:

- Combined Windex/VHF aerial at masthead

VHF Radio:

- Raymarine Ray260 VHF - AIS (new 2019) with handset and internal speaker at Nav station, and connected handset and speaker at helm.

Wi-Fi Booster:

- Wave RoguePro - catches Wi-Fi signals from up to two miles away. (2019). Connected to Linksys Wi-Fi network WAP300N which allows your own private Wi-Fi network onboard while in marina or at anchor.

Satellite Phone:

- Portable Satellite phone
- Panasonic telephone (new 2019) which connects to satellite telephone allowing use of phone as portable handset while sat phone is in cradle.
- Oceansidekick satellite Wi-Fi router (2016)

SAFETY EQUIPMENT

Life Raft:

- Plastimo Transocean ISO 4-person cannister life raft

EPIRB:

- ACR 406

Radar Reflector:

- Firdell "Blipper" on mast

Bilge Pumps:

- Jabsco Maxi Puppy 3000 electric with Hydro-Air switch and audible alarm
- Whale Gusher 10 MKIII, manual

Fire Suppression:

- Fireboy automatic fire suppression system for engine compartment with gauge at nav station

Deck Safety:

- Emergency tiller
- Horseshoe lifebuoy
- LifeSling with lights
- Danbuoy
- Webbing jackstays

ADDITIONAL EQUIPMENT

- Varnished teak cockpit table
- Cockpit cushions (new, 2014)
- Lines / fenders
- Oyster custom Wedgwood bone china yacht crockery
- Oyster custom Sheffield stainless steel cutlery
- Heyco tool kit



- Spares and manuals
- Many cruising spares, including complete spare autopilot, ram and hardware
- Outboard motor bracket
- Outboard hoist (see deck equipment)

EXCLUSIONS

The owner's personal effects are excluded from the sale.

DISCLAIMER

The company offers the details of this vessel in good faith but cannot guarantee or warrant the accuracy of this information nor warrant the condition of the vessel. A buyer should instruct his agents, or his surveyors, to investigate such details as the buyer desires validated. This vessel is offered subject to prior sale, price change or withdrawal without notice.





WILLOW



At Dock



At Dock



Deck Saloon



Deck Saloon



Saloon



Deck Saloon



Deck Saloon, Looking Aft



Aft Cabin Berth



Aft Cabin Hanging Locker



Aft Cabin Vanity/Desk



Aft Cabin Head



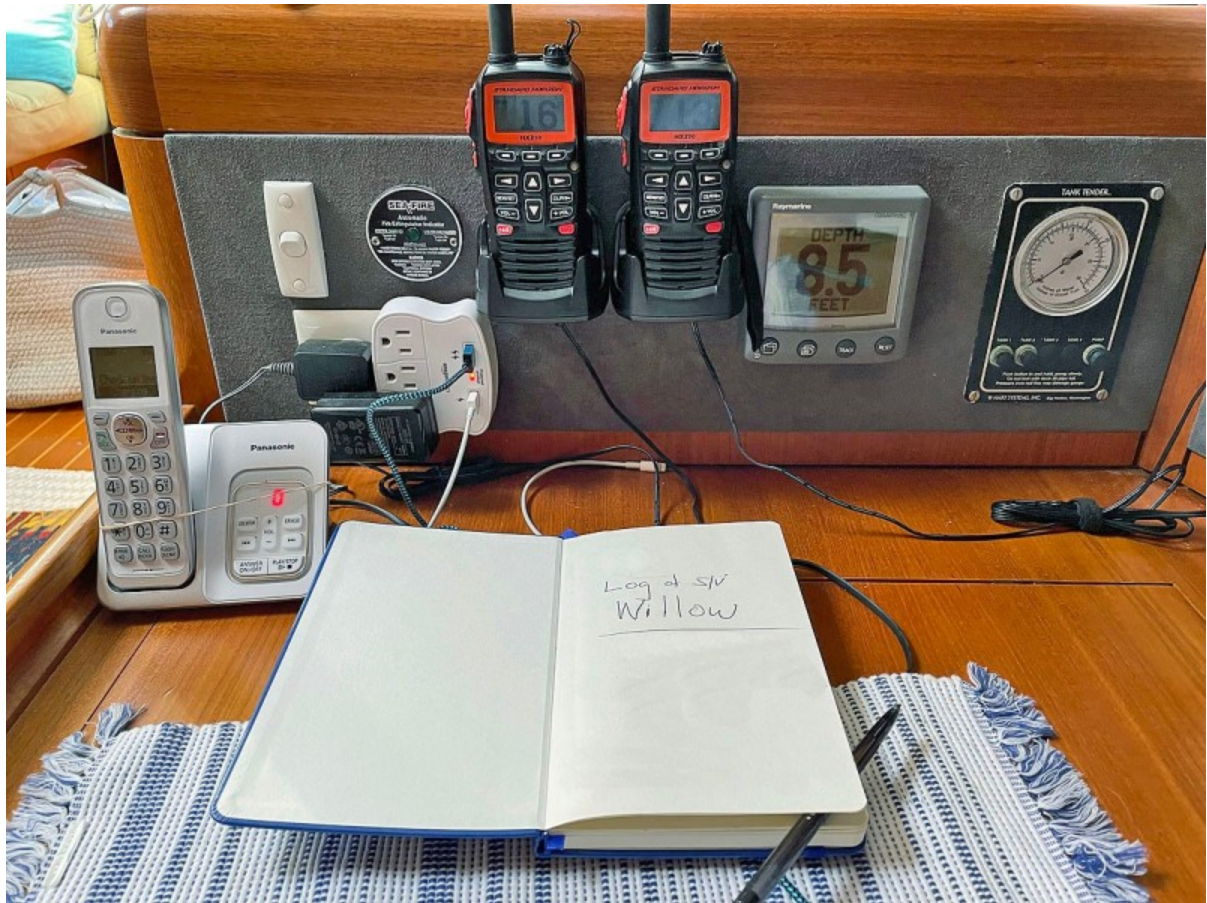
Fwd. Cabin V-berth



Fwd. Guest Head



Guest Cabin



Nav Desk



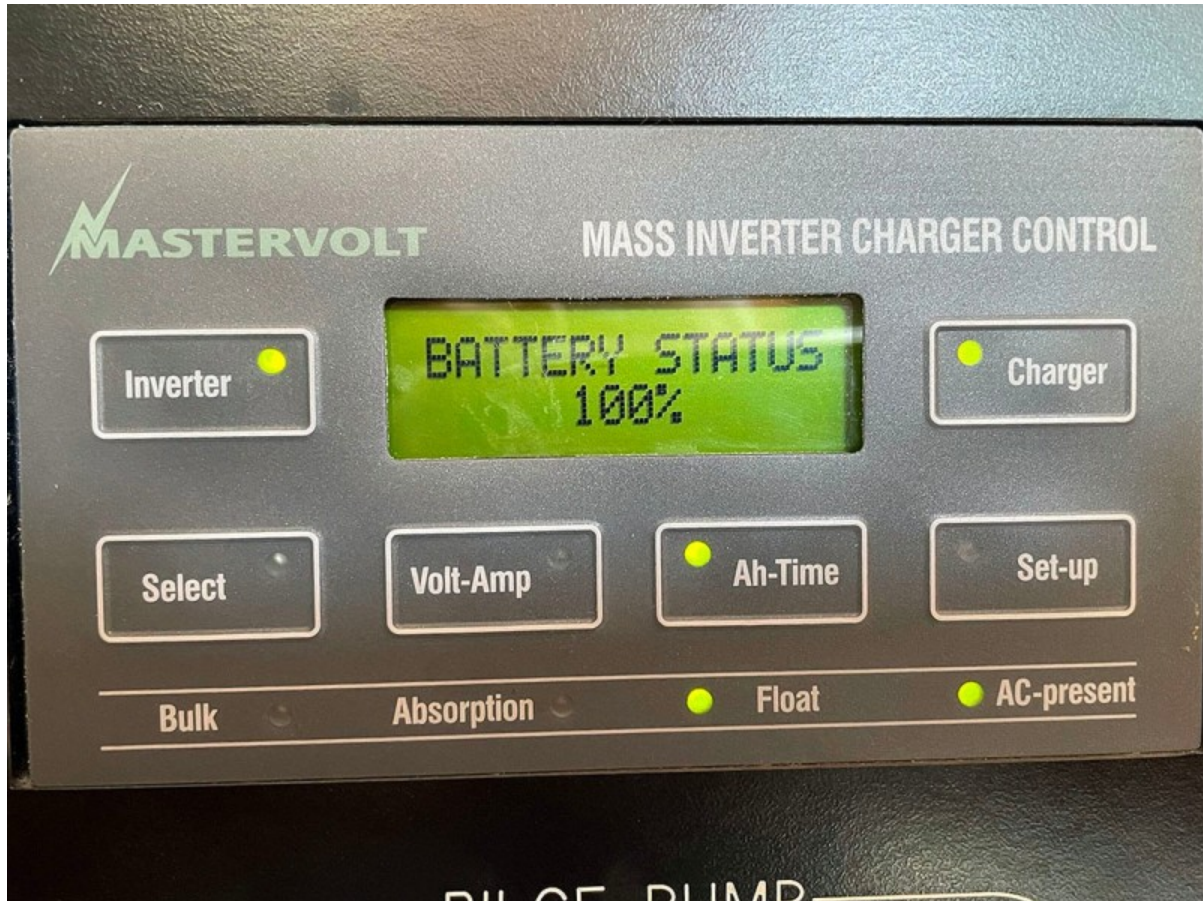
Nav Display



VHF



Autopilot Remote



Mastervolt Controller



Tank Tender



Galley



Galley



Engine



Service Panel



Cockpit, Fwd.



Cockpit, Port



Cockpit, Stbd.



Helm Display



Teak Table, Cockpit



Winches



Cabintop Winch



Raymarine ES Series 9 Under Dodger



Jammers



Cockpit



Cockpit Enclosure



Mast





Mainsail



Mast Base



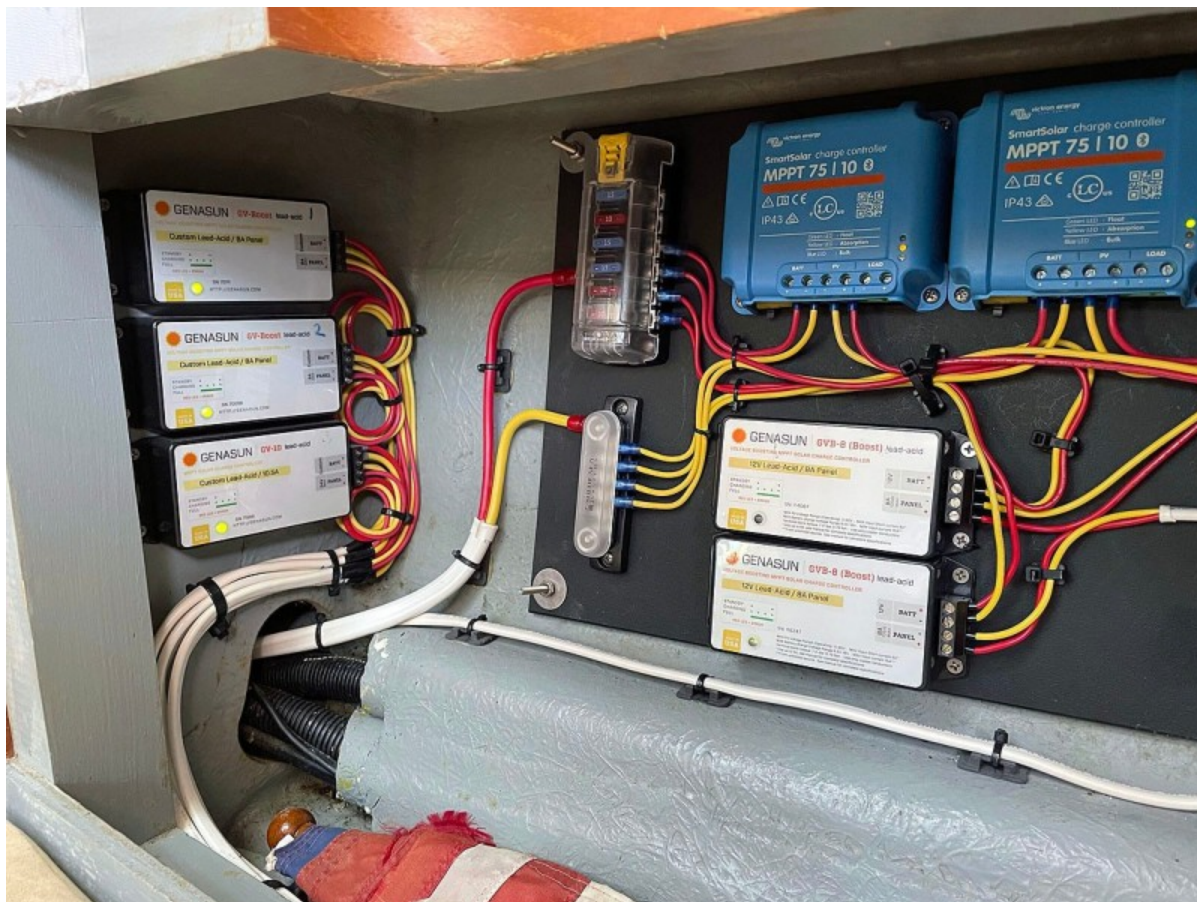
Solar Panel on Foredeck



Solar Panel



Solar on Bimini



Solar Control



Spinnaker Pole





Life Raft



Outboard Crane



Spinnaker





Sailing



In the Bahamas



In the Bahamas



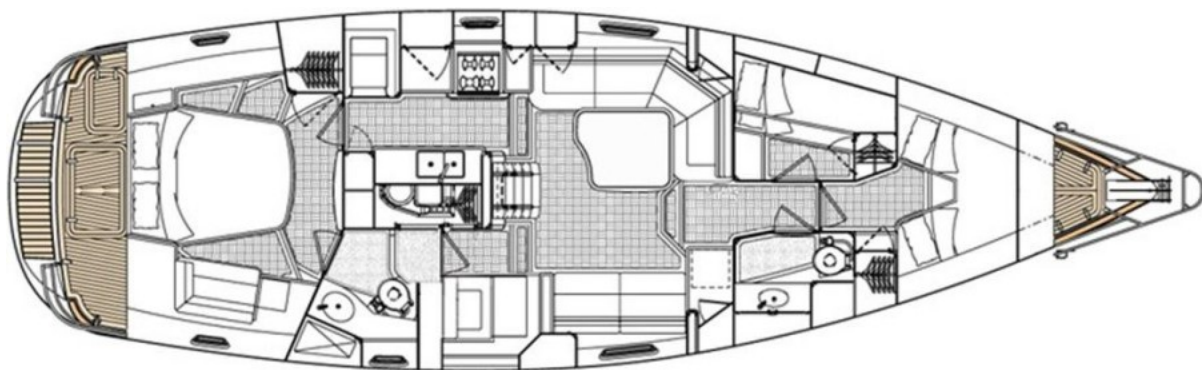
In the Bahamas



In the Bahamas



In the Bahamas



Layout: WILLOW, Oyster 46, 2006