



Four C's

33' (10.06m) 1997 Sea Ray 33 Express Cruiser
St. Petersburg Florida United States



OVERVIEW

Manufacturer:	Sea Ray	Hull Material:	Fiberglass
Engines:	2 Yanmar	Cruise Speed:	24
Engine Model:		Max Speed:	
Engine HP:	440	Cabins/Heads:	/
Beam:	13' 5"	Fuel Type:	Diesel
Max Draft:	3' 0"	Fuel:	275 G (1040.99 L)
Water:	50 G (189.27 L)		

\$84,900



Data Sheet

Category: Cruisers
Subcategory: Express Cruiser
Condition: Used
Model Year: 1997
Beam: 13'5" (4.09m)
Max Draft: 3' (0.91m)
LOA: 33' (10.06m)

Cruise Speed: 24 Fuel Type: Diesel
Hull Material: Fiberglass
Hull Shape: Deep Vee
Hull Finish: Gelcoat
Air Conditioning: Yes

Dry Weight: 16500 lbs
Fuel Tank: 275 gal (1040.99 liters)
Fresh Water: 50 gal (189.27 liters)
Holding Tank: 28 gal (105.99 liters)

Engines/Generators

Engine 1

Yanmar
Inboard
440HP
Fuel: Diesel
Hours: 780
Hours Date: 12-09-2020
Year: 2003
Location: Port

Engine 2

Yanmar
Inboard
440HP
Fuel: Diesel
Hours: 784
Hours Date: 12-09-2020
Year: 2003
Location: Starboard

Generator 1

Northern Lights
M673L3

Summary/Description

Hydraulic Swim Platform, Diesel Engines, Great Conditions

Hydraulic Swim Platform, Yanmar Diesel Engines. You will not find another 33 EC with the options shown. What a fantastic boat for Cruising, Fishing and Diving. The Hydraulic Platform is great for Scuba Divers, swimmers and great for your furry friends to get in and out of the water with ease. Garmin Chart Plotter and Auto Pilot, boat is a must see.

The platform itself is approximately a 25k option and repowered with diesel, well you can only imagine the expense that was. Please call for a personal showing.

- Self-bailing Fiberglass Dual Level Cockpit with raised bridge deck
- indirect cockpit lighting
- cockpit side panel storage

- Large insulated in Floor fish box with hinged lids and pump out
- Molded Fiberglass Boarding Steps
- Freshwater Wash Down Faucet
- Molded Fiberglass Transom Door
- Fold away Aft Seat
- Trash receptacle
-
- Electrically Actuated Cockpit Sole Raises for Engine Access
- Power adjustable helm seat
- Portside helm seat with aft facing seat with storage
- Burl Instrument Panel
- Fiberglass sport spoiler
- 120V Outlet
- Stainless Steel Grab Rails

- Convertible Dinette with Storage below
- Dining Table with Dedicated Storage
- V-Berth Filler Cushions
- Hanging Lockers with Mirrored Doors
- Side Shelf Storage
- Mirrored Rope Locker Bulkhead
- V-Berth Privacy Doors
- 120V outlet
-
- Electric Convertible Salon Sofa with storage beneath
- Upper storage cabinet
- 120V outlet



- Flush mount two burner electric stove
 - stainless steel Stove rail
 - Fridge, **Currently not working but owner is replacing with a new one**
 -
 - Galley storage Drawers with designated Glass and Plate Storage
 - Fiberglass Countertop
 - Removable Trash Can
 - Stainless Steel Handrail
-
- Vacuum Flush Head with Fiberglass Settee Lid
 - Holding Tank
 - Vanity with Sink and Storage Below
 - Full Fiberglass Enclosed Stand up Head with Shower and Curtain
 - Stainless Steel Handrail
 - Mirrored Medicine Cabinet and Wall Mirror
 - Diesel Generator
 - Diesel Generator
-
- 12,000 BTU 1 Ton includes secondary Dockside Power System.











Spacious Seating or Fishing ability



Bow for Sunning



Hydraulic Platform





Flip Down Back Bench



Bait and Prep Station



Captain Bolster Seat



CO-Caption Seat





Salon





Nice Galley



Two Burner Top



Fridge



Forward Berth converts to Dinette





Head with Shower





Stainless Steel Spotlight and Windlass



Full Gauges



Auto Pilot



Chart Plotter



Power Panel in Salon



Step



Bimini Top with Fiberglass Arch

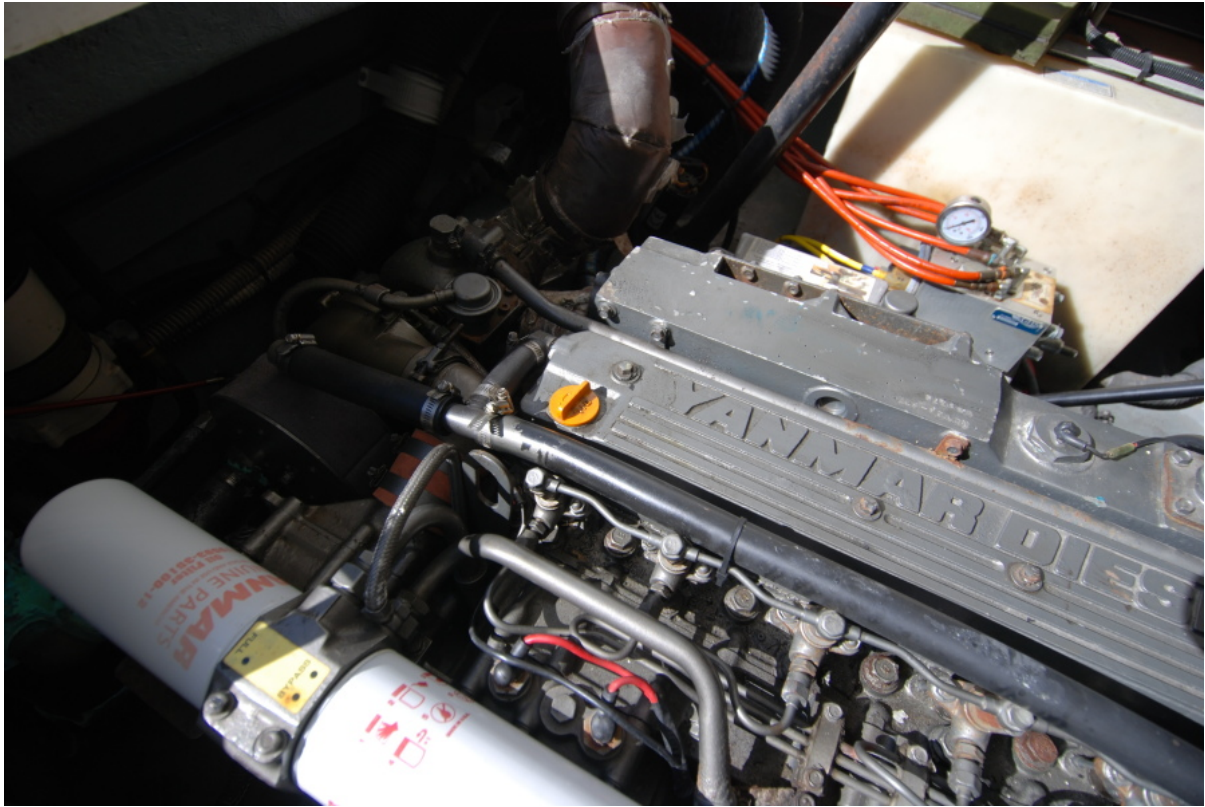


Engine Room



Generator

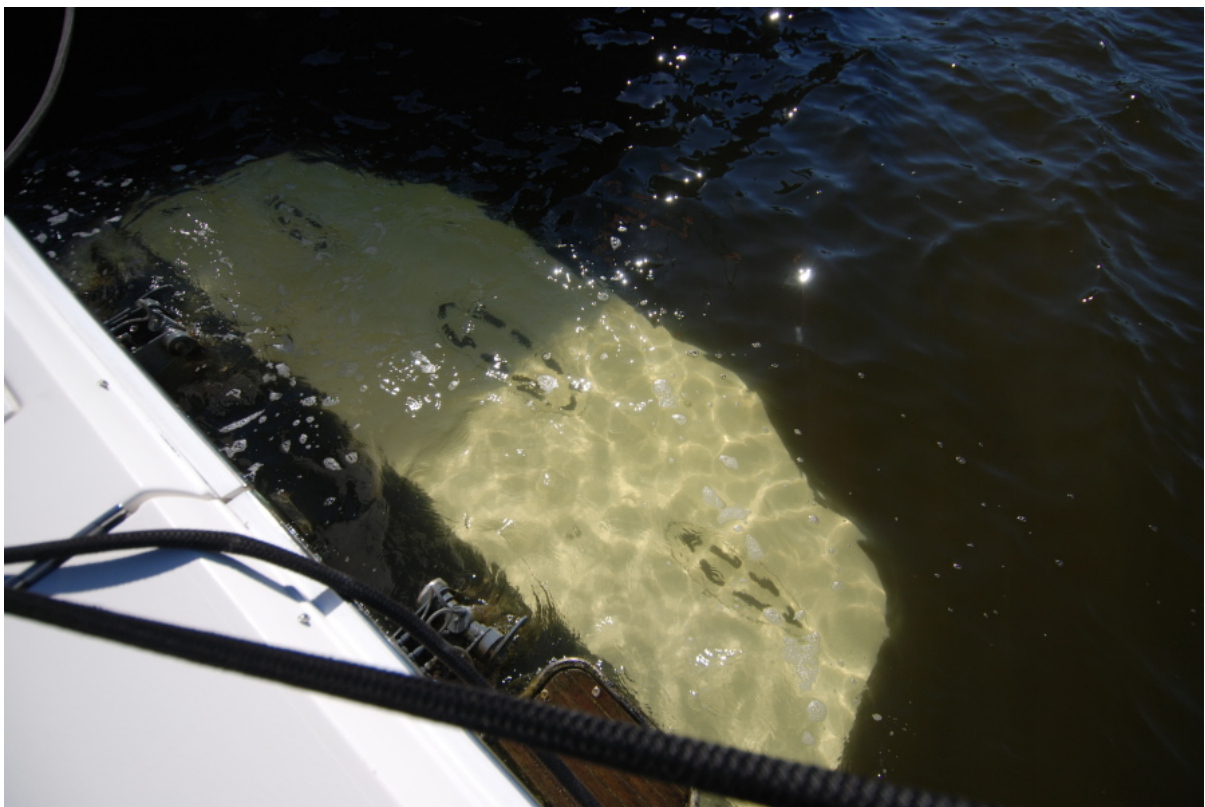




Electric Engine Hatch



Hydraulic Platform



Platform