



The Payoff

46' (14.02m) 2002 Sea Ray 460 Sundancer
Key Biscayne Florida United States



OVERVIEW

\$210,000

Manufacturer:	Sea Ray	Hull Material:	Fiberglass
Engines:	2 Cummins	Cruise Speed:	Knots
Engine Model:	6CTA8.3L	Max Speed:	24.5 Knots
Engine HP:	450	Cabins/Heads:	2 / 2
Beam:	14' 8"	Fuel Type:	Diesel
Max Draft:	3' 7"	Fuel:	400 G (1514.16 L)
Water:	100 G (378.54 L)		





Data Sheet

Category: Cruisers
Subcategory: Express Cruiser
Condition: Used
Model Year: 2002
Beam: 14'8" (4.47m)
Max Draft: 3' 7" (1.09m)
LOA: 51' 4" (15.65m)
Cabins: 2
Heads: 2

Maximum Speed: 24.5 Knots
Knots
Fuel Type: Diesel
Hull Material: Fiberglass
Air Conditioning: Yes

Displacement: 28000 lbs
Bow Thruster: Yes
Fuel Tank: 400 gal (1514.16 liters)
Fresh Water: 100 gal (378.54 liters)
Holding Tank: 60 gal (227.12 liters)
Builder: Sea Ray

Engines/Generators

Engine 1

Cummins
6CTA8.3L
Inboard
450HP
Fuel: Diesel
Hours: 1396
Serial #: 46143359
Location: Port

Engine 2

Cummins
6CTA8.3L
Inboard
450HP
Fuel: Diesel
Hours: 1517
Serial #: 46143313
Location: Starboard

Generator 1

Westerbeke
10BTDA
Hours: 2065



Summary/Description

2002 Sea Ray 460 Sundancer with Cummins 6 CTA 8.3, 450hp x 2

This Sundancer has been maintained lovingly and with an open checkbook by current owner.

First owner handed the boat over the same way.

Records available for serious inquiries only

2020

- ~Compound and Waxed 3/2020
- ~Long Range Marine Wi-Fi Extender
- ~Security Camera
- ~Cell Signal Booster
- ~Generator Starter
- ~Full A/C Service
- ~New A/C Raw Water Pump
- ~Full OIL service with change of oil, fuel, air and coolant filters
- ~New belts, impellers, zincs both engines, transmission and generator
- ~New Generator Batteries
- ~ Sun Shade for Aft Table

2019

- ~Full engine, transmission and gen service
- ~Underwater Lights (4)
- ~Garmin GPSMAP 1242xsv Touch
- ~Garmin ECOMAP Plus 94sv
- ~Transducer
- ~Shaft Seals Replaced
- ~Cockpit Lights
- ~Marine Steering Wheel
- ~24V Bow Thruster



~Two House Batteries

~Two Bow Thruster Batteries

~Exterior Carpet

Seaworthy and easy to handle, come onboard aft deck into the expansive seating in cockpit welcoming you and your guests. Perfect place to entertain and enjoy the water with plenty of room, a table for bites, a wet bar to PORT complete with a refrigerator to keep your drinks cool guaranteeing comfort.

The helm seat is flanked by a loveseat to PORT to keep the captain company, and the systems are laid out, Sea Ray style, with a complete electronics and navigation package at your fingertips.

Two private staterooms and two full heads are found steps below, with a fully suited galley to include a full size refrigerator, sink, microwave oven and range.

Mechanical Disclaimer

Engine hours are as of the date of the original listing and are a representation of what the listing broker is told by the owner and/or actual reading of the engine hour meters. The broker cannot guarantee the true hours. It is the responsibility of the purchaser and/or his agent to verify engine hours, warranties implied or otherwise and major overhauls as well as all other representations noted on the listing brochure.

Disclaimer

The company offers the details of this vessel in good faith but cannot guarantee or warrant the accuracy of this information nor warrant the condition of the vessel. A buyer should instruct his agents, or his surveyors, to investigate such details as the buyer desires validated. This vessel is offered subject to prior sale, price change or withdrawal without notice.





Main Profile



Bow View



Steps to Cockpit



Galley Overview



Galley with Focus on Refrigerator



Galley with Covers



Galley View from Salon Seating



Salon Settee



Salon Settee



Salon Settee



Salon Settee



Forward Berth



Master Head



View into Guest Room with Sliding Doors



Convertible Couch in Guest Bed



View to Galley from Guest Cabin



Guest Head



AC/DC Panel



Ground Tackle



Windlass



Pulpit View to Helm



Bow



Helm View from Mid Bow



Isinglass from STBD View



Isinglass and Windshield Detail



PORT Side View to Bow



Helm and Companion Seat from PORT



Helm Gauges



Helm Overview from Companion Seating



Helm



New GARMIN



Helm Seating



DC Panel



Cockpit from Helm



Cockpit to Helm View



Overview No Canvas Above Cockpit



Cockpit from PORT Side Entry



Cockpit Seating with Canvas



Swim Platform from Dock



Stern View



Engine Room View to Aft



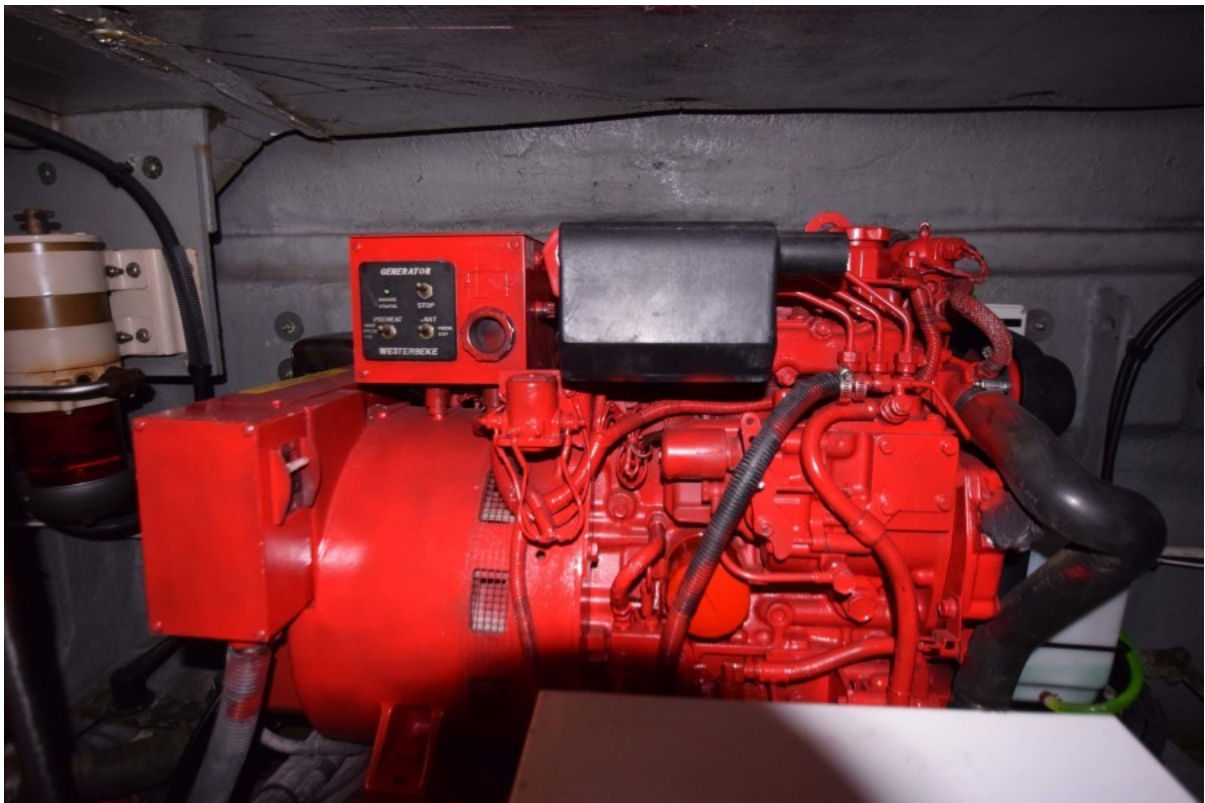
Engine Room View from Cockpit



Engine Room Filters and Dates



Engine Room Batteries and Charger



Engine Room Generator



New Sunshade 1



Sunshade



Sunshade



PORT Side View



STBD Side View



STBD Side View from Dock



Evening Underwater Lights