



Grateful

44' (13.41m) 2016 Leopard 44
Fort Lauderdale Florida United States



OVERVIEW

Manufacturer:	Leopard	Hull Material:	Fiberglass
Engines:	2 Yanmar	Cruise Speed:	
Engine Model:	3 JH-5E	Max Speed:	
Engine HP:	45	Cabins/Heads:	3 / 3
Beam:	23' 9"	Fuel Type:	Diesel
Max Draft:	4' 2"	Fuel:	185 G (700.3 L)
Water:	206 G (779.79 L)		

\$599,000



Data Sheet

Category: Catamaran
Subcategory: Cruisers
Condition: Used
Model Year: 2016
Beam: 23'9" (7.24m)
Max Draft: 4' 2" (1.27m)
LOA: 42' 7" (12.98m)
LWL: 41' 8" (12.70m)
Cabins: 3
Heads: 3

Fuel Type: Diesel
Hull Material: Fiberglass
Hull Shape: Catamaran
Air Conditioning: Yes

Displacement: 27206 lbs
Dry Weight: 27811 lbs
Fuel Tank: 185 gal (700.3 liters)
Fresh Water: 206 gal (779.79 liters)
Holding Tank: 26 gal (98.42 liters)
Builder: Robertson & Caine
Designer: Simonis Voogd

Engines/Generators

Engine 1

Yanmar
3 JH-5E
Inboard
45HP
Fuel: Diesel
Hours: 1150
Year: 2016
Location: Port

Engine 2

Yanmar
3 JH-5E
Inboard
45HP
Fuel: Diesel
Hours: 1150
Year: 2016
Location: Starboard

Generator 1

Northern Lights
6KW
Hours: 960

Summary/Description

New Arrival!

This is the one that you have been waiting for! "Grateful" is a low hour, fully loaded owners version Leopard 44 with loads of upgrades. She has an upgraded interior, upgraded 45 HP Yanmar Engines, Synthetic Teak Decks, New 12" Axiom Pro Chartplotter, 12V Watermaker, Walk on Solar panels, Center Console Dinghy with new 25 HP Suzuki, and a Custom Parasailor Downwind Sail.

Owners change in plans presents a great buying opportunity for someone looking for an absolutely turn-key recently upgraded and serviced catamaran ready to cruise the world tomorrow. The owners have spent the last 6 months getting her ready for departure and the list of recent services and upgrades is extensive. Please contact the listing broker for a complete and detailed description of everything that has gone into this boat. Examples include bottom paint, full engine and drive services, new running rigging, serviced the watermaker, engine service on tender, professional rig tuning, removal and inspection and service the sails, new salon A/C unit, new wifi receiver, new power winch, spare props, and much more. Also included in the sale are many extras including charts, books, paddle boards, kayaks, hand held radios, flags, personal locator beacons, harnesses, spare parts, and much more.

Its not often that you will find a meticulously maintained, never chartered, ready to go catamaran. Most people sell these boats after they have finished cruising and the boat is in need of attention. Why spend months in the yard and spend tens of thousands of dollars on a refit when you can step aboard "Grateful" and head to the Islands tomorrow ?

Please contact the listing broker today for more information.

Manufacturer Provided Description

The Leopard 44 represents Robertson and Caine's latest innovative developments with modern features not yet seen on production catamarans, while remaining committed to the tried and tested features that have made the Leopard line one of the most sought after brands of catamarans globally.

Forward Cockpit:

One of the many intriguing features this yacht offers is the forward cockpit with direct access from the saloon. While a forward cockpit is conventional on the modern cruising catamaran, the Leopard 44 distinctively offers an integral hardtop bimini, protecting the forward and aft cockpit, while also creating a comfortable outdoor living space.

Performance:

The Leopard 44's sailing performance and ease of handling has earned her multiple awards. All running rigging runs aft to the standard electric winch allowing this yacht to be sailed from the comfort and safety of the protected helm station with double helm seat and hardtop bimini.

Construction

- HULL CONSTRUCTION: Composite Glass Reinforced Plastic (GRP) Sandwich with Balsa core
- DECK MATERIAL: Textured G.R.P. with balsa core
- RUDDER TYPE: Balanced spade rudders
- KEEL TYPE: Multihull
- WHERE BUILT: Cape Town, South Africa

Accommodations

- OWNER SUITE: Starboard Side with Storage

INSIDE EQUIPMENT

- FANS: Yes, throughout
- BLINDS: Yes, Oceanaire throughout
- SALOON TABLE: Convertible to Coffee Table or Bed
- COOKER TYPE: Force 10, 3 burner
- SHOWERS: 3 in Heads + 1 Aft deck
- HAND BASINS: 3 - 1x each Head
- UPHOLSTERY/COLOR SCHEME: "Milk" Interior
- INTERIOR CONSTRUCTION/WOOD TYPE: Laminate
- Cruise Air AC/Heat
- Washer/Dryer Combo

Electronics

- Remote mounted Iridium GO with external antenna (2019)
- Raymarine 12" AXIOM PRO Display with Charts (New in 2019)
- AIS Transponder and Receiver
- HD Raymarine Radar
- Raymarine Autopilot, Wind, Depth, and Multi function displays
- Fusion Stereo with 4 speakers and remote on helm
- Raymarine VHF with remote handset at helm

Deck Equipment

- OUTBOARD ENGINE: 2019 Suzuki 25HP EFI with Electric and Manual Start. Power trim and tilt.
- DINGHY: Infanta RIB with Console. 6 gal fuel capacity in 2 tanks stored in seat. Compact starting battery mounted in bow locker, 2 Anchors, and Custom Navy Chaps (New 2019)
- GRILL/BBQ: Magma
- 2 SUP Paddleboard Racks
- 4 Rail mounted rod holders
- Fish cleaning table
- WINDLASS: Quick Electric Remote Controlled
- PRIMARY ANCHOR: 55lb Mantus with Mantus bridle hook. Spare: Fortress 17 with Rode and Chain for stern anchoring.
- SAFETY EQUIPMENT: USCG (as onboard), EPIRB, Life Raft with hard pack and top mounted rack.
- 4 Offshore Inflatable PFD harnesses with tether lines and 3 AIS locator rescue beacons
- MOB Offshore Rescue Strobe

Sails and Rigging

- TYPE: Sloop Rig
- SPAR MAKER/MATERIAL: Sparcraft/Aluminum
- STANDING RIGGING MATERIAL: Stainless Steel Wire
- RUNNING RIGGING MATERIAL: Cored Braided Line
- MAINSAIL REEFING: Lines lead Aft to Helm, Halyard Leads Aft to Electric Winches

- HEADSAIL ROLLER FURLING: Profurl Titanium
- BOOM VANG: Yes
- MAINSAIL / GENOA: Quantum
- ELECTRIC WINCHES: 2 x Lewmar 46 Electric
- CUSTOM PARASAILOR

Electrical Equipment

- VOLTAGE: 12V
- ELECTRICAL CIRCUIT: 110V
- HOUSE BATTERIES: 3x 210AH Lifeline AGM (New 05/19)
- ENGINE BATTERIES: 2x Lifeline AGM Starting (New 05/19)
- GENERATOR BATTERY: 1x Lifeline AGM Starting (New 05/19)

Engines and Controls

- ENGINE 1 HOURS RUN/DATE: Port 1150 hours
- ENGINE 2 HOURS RUN/DATE: Starboard 1150 hours
- GEARBOX: 2x Yanmar Saildrive
- CONTROLS: Morse
- COOLING SYSTEM: Heat Exchange
- GENERATOR: Northern Lights 6KW - 960 hours

Upgrades

- Customized Lounge Style cushions with Perennials outdoor fabric(upgrade from Sunbrella) with white piping. Seat foam is 3" Drifast.
- Customized helm seat cushion
- Custom Enclosure for helm made of Gauge 40 Strataglass installed with zippers on the bottom and heavy duty track top and bottom with cut outs for lines. (New 2019)
- Sunshade for back of helm made of White Phifertex Plus.
- Customized two sets of fitted sheets for each stateroom
- Customized Mattress Protectors
- Owners cabin has a Handcrafted Mattress Latex 6.5 With Bamboo Fabric Upgrade and Addition of Hinge fold
- Full length mirror in Master
- Port aft and forward guest cabins have customized bamboo mattress toppers
- Spectra 400 water maker, 12V with Z-ion system and extra carbon filtration
- Solara walk on solar panels 115w x6 with all individual MPT controllers and combined read out at main solar panels with individual controllers. Total 690 Watt of solar. All lines fused and protected.
- Charger and inverter
- Total of 760 AMP hour AGM house batteries with separate engines and generator AGM batteries
- Custom drawers in galley (x2 cutlery, x2 larger)
- Fresh water flush for heads with switch panel with rocker switch for salt/fresh selection
- Inline Chlorinator and disinfectant system FOR ALL heads that eliminates odor
- Vitrifrigo IMHYDIXN1-F Ice-maker in cockpit by door with GFCI and shutoff valve
- Wine refrigerator in salon port forward and custom cabinet installation
- Microwave in galley port side with custom cabinet/ additional outlet in cabinet and additional outlet for appliances. Cabinet/shelf above microwave Custom cutout with matching trim for large pans/bakeware.
- 4G LTE Wi-Fi/cellular booster mounted on hardtop. 12V fused power supply with upgraded long range antenna.
- Closed out V-berth port forward with 2 doors to look like headboard. Creates extra storage space port forward berth.

- Air-conditioning vent added in owners head
- Auto drain shower in Master
- Carbon water filter under galley sink with carbon wall mounted filter
- Additional pad eyes, turning blocks, and cam cleats added on port and starboard side for parasailor.
- Additional outlets placed in salon and owners cabinets
- Salon LED red light for night navigation and 3 color led cockpit lighting
- Custom made acrylic bar and glassware storage
- Dinghy Bridle made with vinyl coated steel cable and extension for the ability to carry the tender at different heights
- Stainless steel door pulls and hardware installed on all drawers and cabinets
- Life raft cradle on salon top to have more storage in lockers
- Custom made Hatch covers, Helm Cover, dinghy cover, and life raft cover
- Black out canvas covers for Master
- EPIRB mounted in salon
- Synthetic Teak Decking in both aft and fwd cockpit
- Custom cockpit grab rail
- New Grill

Extras

- 12v West Marine Air Compressor
- 5-Gallon Portable fuel jugs
- (2) Marine Bean Bags
- Arctic cooler in cockpit with matching cushion
- Black Mesh Window coverings for Salon Side Windows (2019)
- Aluminum bi-fold boarding ramp
- Spare Electric Winch
- Spare Props
- Ditch Bag
- Water toys, Chairs, Umbrella, Charts, Books, PFDs with AIS, Flags, and More

Exclusions

Personal effects and Art work.

Mechanical Disclaimer

Engine hours are as of the date of the original listing and are a representation of what the listing broker is told by the owner and/or actual reading of the engine hour meters. The broker cannot guarantee the true hours. It is the responsibility of the purchaser and/or his agent to verify engine hours, warranties implied or otherwise and major overhauls as well as all other representations noted on the listing brochure.

Disclaimer

The company offers the details of this vessel in good faith but cannot guarantee or warrant the accuracy of this information nor warrant the condition of the vessel. A buyer should instruct his agents, or his surveyors, to investigate such details as the buyer desires validated. This vessel is offered subject to prior sale, price change or withdrawal without notice.



Main Profile



Starboard Aft Profile



Starboard Bow Profile



Port Stern View, Mast, Rigging



Cabin Interior Entrance



Salon Settee And Table



Salon Bar With Bottle Chiller



Galley And Bar To Portside



Galley



Aft Galley With Pass Through Window



Electrical Panel



EPIRB



Master Suite



Master Stateroom Queen Berth



MSR to Aft, TV



Master Ensuite Head, Storage



Ensuite Head



Master Suite From Head



Laundry Cabinet Washer & Dryer



Guest Suite From Companionway



Forward Guest Stateroom



Forward Guest Suite 2



Guest Ensuite Head



Guest Stateroom



Guest - Ensuite Head 2



Stbd Bow - Mast, Rigging



Foredeck



Windlass With Electronic Control



Bow Storage Compartment



Forward Cockpit Seating



Port Side Deck, Cabin Entry



Aft Deck To Stbd Aft



Aft Deck Dining To Port



Aft Deck Seating & Table



Aft Deck Cabin Entry, Steps To Helm



Helm Enclosed Hardtop With Skylight



Helm & Seat



Helm



Helm Instruments



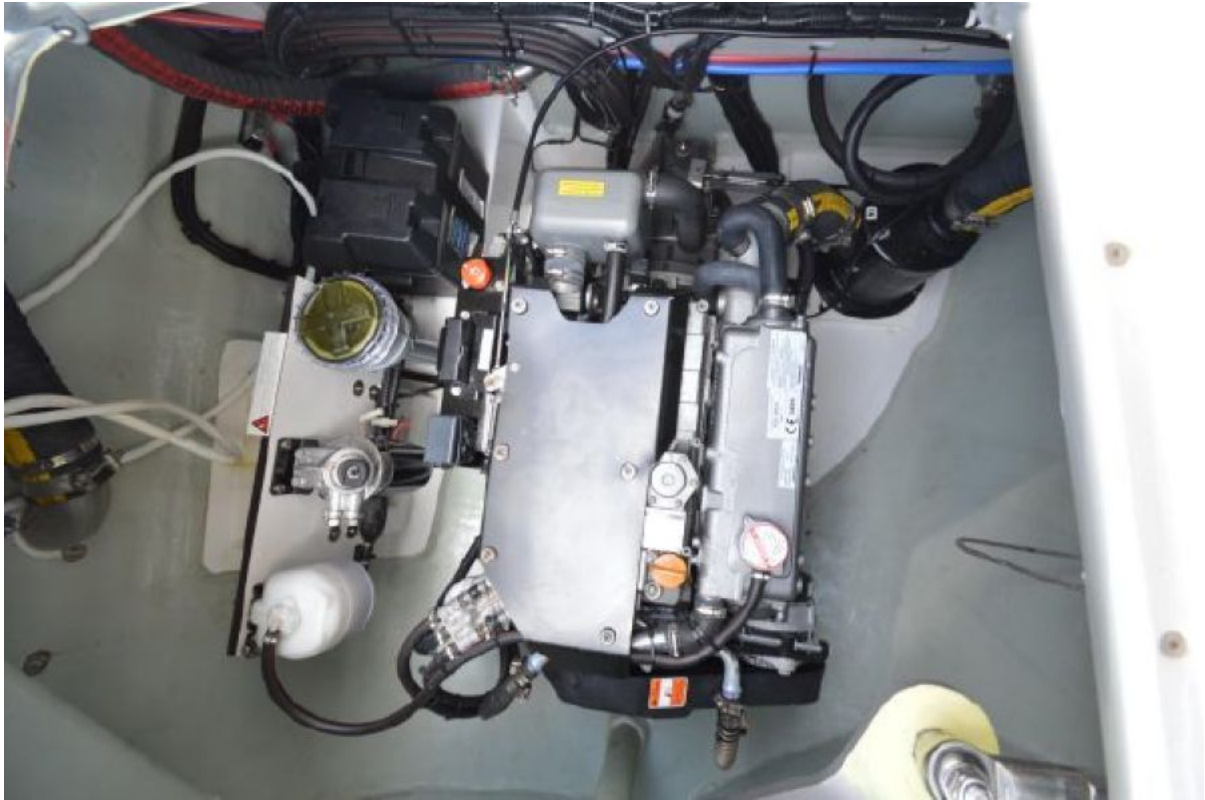
Helm Covered



Aft Curtain - Helm



Engine Compartment



Engine Compartment 2



Engine Compartment 3



Stbd Stern, Dinghy & Davit



Stern View, Dinghy