



# Main Line

47' (14.33m) 2004 Jarrett Bay Custom Carolina Express  
Cape May New Jersey United States



## OVERVIEW

**\$595,000**

Manufacturer:	Jarrett Bay	Hull Material:	Fiberglass
Engines:	2 Caterpillar	Cruise Speed:	28 Knots
Engine Model:	3406E	Max Speed:	36 Knots
Engine HP:	800	Cabins/Heads:	1 / 1
Beam:	15' 2"	Fuel Type:	Diesel
Max Draft:	3' 6"	Fuel:	700 G (2649.79 L)
Water:	120 G (454.25 L)		





## Data Sheet

Category: Sport Fishing  
Subcategory: Saltwater Fishing  
Condition: Used  
Model Year: 2004  
Beam: 15'2" (4.62m)  
Max Draft: 3' 6" (1.07m)  
LOA: 47' (14.33m)  
Cabins: 1  
Heads: 1

Maximum Speed: 36 Knots  
Cruise Speed: 28 Knots  
Fuel Type: Diesel  
Hull Material: Fiberglass  
Air Conditioning: Yes

Fuel Tank: 700 gal (2649.79 liters)  
Fresh Water: 120 gal (454.25 liters)

## Engines/Generators

### Engine 1

Caterpillar  
3406E  
Inboard  
800HP  
Fuel: Diesel  
Hours: 4400  
Year: 2004  
Location: Port

### Engine 2

Caterpillar  
3406E  
Inboard  
800HP  
Fuel: Diesel  
Hours: 4400  
Year: 2004  
Location: Starboard

### Generator 1

Onan  
13.50KW



## Summary/Description

New Arrival!

"Main Line" is Jarrett Bay's hull number 41 custom built for the current and original owner. Captain maintained with an excellent service history. Powered with bullet proof CAT 3406E's 800hp which offers a solid 28kt cruise economically. Soft dry Carolina ride, stable platform on the troll, and a tournament cockpit to work out of. "Main Line" is finished off with a Pipewelders Tower and Controls. Furuno Electronics package and much more. Don't miss this turn-key Carolina Express Jarrett Bay.

## Main Deck

- Teak Covering Boards
- Transom Kill Box
- Insulated Ice Bin
- Livewell
- Cockpit Freezer
- Pompanette White Fiberglass Rocket Launcher 4" pedestal, Tray and Drawer
- Tuna Door
- 8 Rod Holders in Gunnel
- Short Bow Rail with Pulpit
- Rupp 39' Triple Spreader Outriggers and Center Rigger
- 4 Sided Enclosure
- 2 Pompanette Helm Chairs
- Pipewelders Tower
- Molded NAV Lights
- Recessed White and Red Chart Lights
- Tower Controls and Steering
- Tower Bench Seat
- Cockpit Speakers
- Bridge Deck Speakers
- Fresh Water and Salt Water Washdowns

## Electrical

- 50 amp Shore Power
- 24Volt Battery Charger
- 12Volt Battery Charger
- Onan Generator 13.5KW
- Pressure Fresh Water System
- Cabin AC/Heat
- Hot Water Heater
- Fixed Fire Suppression System
- Cabin Lights and Outlets
- Spreader Lights
- Courtesy Lights
- NAV Lights
- Helm Deck Hatch Lift for Engine Access

- Macerator For Waste Discharge
- Engine Room Lights
- Under Water Lights
- Shower Sump Pump\
- Salt Water Washdown Pump
- Livewell Pump
- Bilge pumps
- Engine Alarms
- Block Heaters
- Windlass

## Helm and Electronics

- Pompanette Helm and Companion Chairs
- Simrad Taiyo TD-L1550A
- 2-10" Furuno NavNet 3D Units, Radar, Chartplotter, and Sounder
- CAT Digital Displays
- Simrad AP22 Autopilot
- FLIR
- ICOM IC-M602 VHF
- Clarion Stereo CD Player
- Furuno RD-30

## Salon and Galley

### Salon

- Down 5 Steps to Salon
- Port and Starboard L-Shaped Seating with Storage Below
- Port and Starboard Concealed Rod Lockers
- Headliner with Recessed Lights

### Galley forward and to Port

- Sink
- Countertops
- Storage Drawers and Cabinets
- Microwave Oven
- Lights and Outlets

## Engine and Mechanical

- CAT 3406E's 800hp with 4435 hours Excellent Service History
- Super Clean Engine Room and Lazarette
- Racor Fuel Filters
- Dripless Shaft Logs
- Hydraulic Steering System
- Battery Switches

## Master Stateroom and Head

## Master

- V- Berths Forward with Storage Below
- Port and Starboard Storage Lockers
- Overhead Hatch
- Headliner and Carpeting
- Recessed Lights
- Rod Racks
- Ships Electrical Panel

## Head

- Electric Toilet
- Stall Shower
- Sink
- Vanity
- Mirror
- Blower Vent

## Brokers Comments

Superbly kept 47 Jarrett Bay Hull #41

Awesome Sea Boat and Great Trolling Platform

## Mechanical Disclaimer

Engine hours are as of the date of the original listing and are a representation of what the listing broker is told by the owner and/or actual reading of the engine hour meters. The broker cannot guarantee the true hours. It is the responsibility of the purchaser and/or his agent to verify engine hours, warranties implied or otherwise and major overhauls as well as all other representations noted on the listing brochure.

## Disclaimer

The company offers the details of this vessel in good faith but cannot guarantee or warrant the accuracy of this information nor warrant the condition of the vessel. A buyer should instruct his agents, or his surveyors, to investigate such details as the buyer desires validated. This vessel is offered subject to prior sale, price change or withdrawal without notice.





Main Profile - Running



Cabin Entry and Salon





Stairs and Salon Settee



Salon Settee to Starboard



Rod Storage Locker



Rod Storage Locker





Rod Storage



Galley and Salon



Salon and Galley



V-Berth Forward





V-Berth and Storage



Electrical Panel in V-Berth





Head and Shower



Head and Shower

\_\_\_\_\_





Helm Deck



Helm



Furuno



Simrad





Furuno



Instruments





Helm Deck Seating

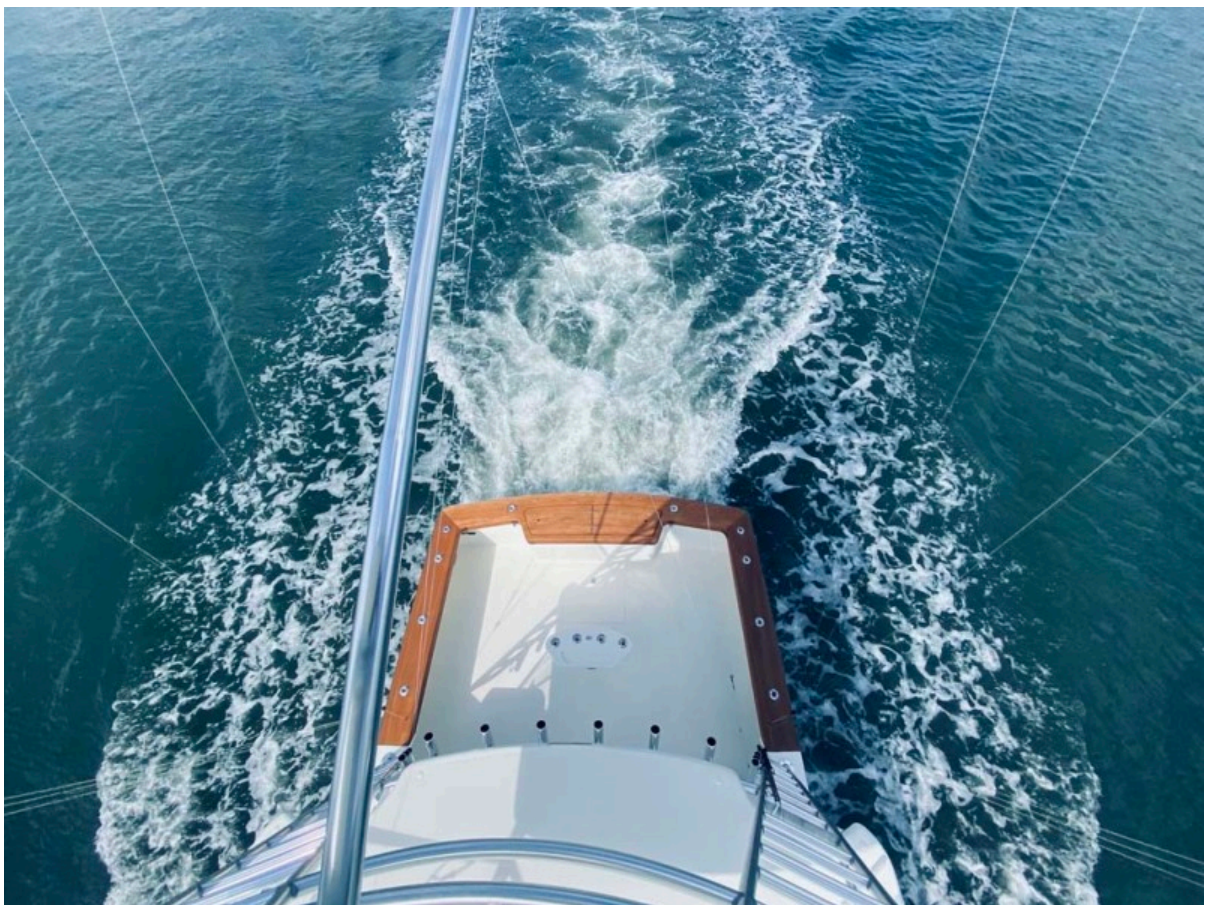


Helm Deck Seating





Tower Helm Seat



Cockpit View from Tower







Cockpit



Cockpit







Cockpit



Livewell



Engine Room

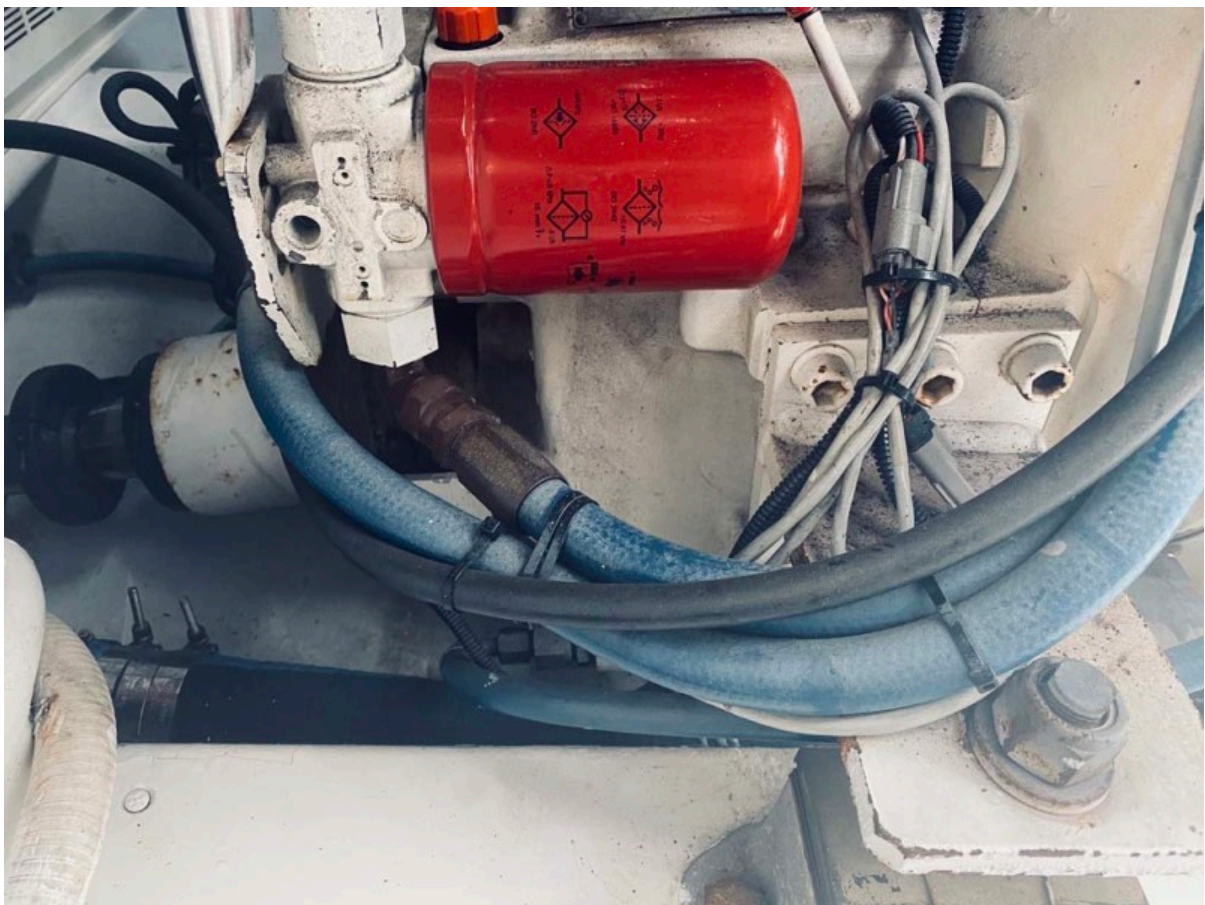


Engine Room



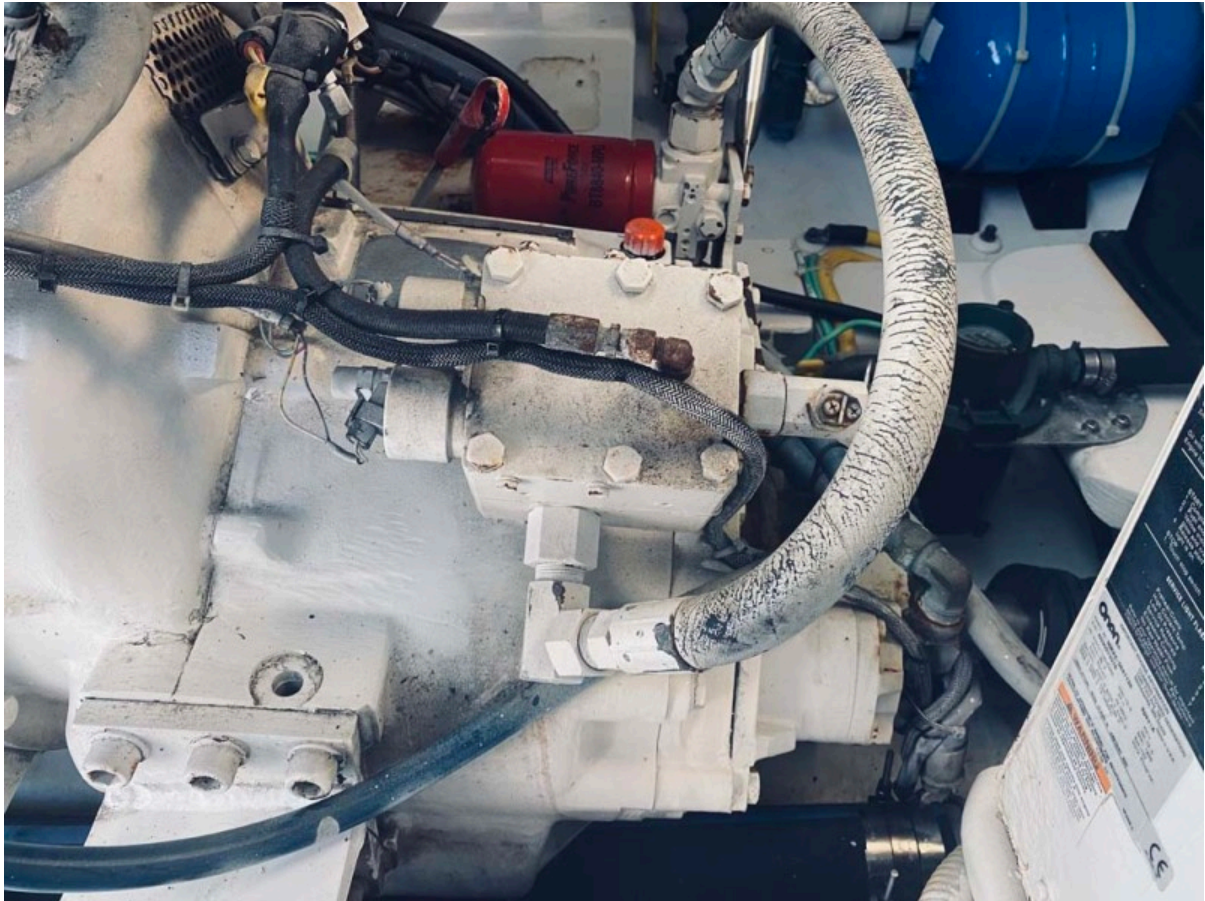


Engine Room



Engine Room





Engine Room



Engine Room





Engine Room



Engine Room





Engine Room



Port Side View



Port Aft Quarter



Running View





Port Running View

