



AVANTI

43' (13.11m) 2005 Grand Banks Eastbay 43 HX
Stonington Connecticut United States



OVERVIEW

Manufacturer:	<i>Grand Banks</i>		
Engines:	2 Caterpillar	Hull Material:	Fiberglass
Engine Model:	CX7	Cruise Speed:	24 Knots
Engine HP:	455	Max Speed:	29 Knots
Beam:	13' 2"	Cabins/Heads:	1 / 1
Max Draft:	3' 7"	Fuel Type:	Diesel
Water:	110 G (416.4 L)	Fuel:	450 G (1703.43 L)

\$495,000



Data Sheet

Category: Express Cruiser
Subcategory: Downeast
Condition: Used
Model Year: 2005
Beam: 13'2" (4.01m)
Max Draft: 3' 7" (1.09m)
LOA: 43' (13.11m)
Cabins: 1
Sleeps: 4
Convertibles: 1
Double Berths: 1
Heads: 1

Maximum Speed: 29 Knots
Cruise Speed: 24 Knots
Fuel Type: Diesel
Hull Material: Fiberglass
Hull Finish: Awlgrip
Bridge Clearance: 14' 5

Displacement: 29760 Bow Thruster: Yes
Fuel Tank: 450 gal (1703.43 liters)
Fresh Water: 110 gal (416.4 liters)
Holding Tank: 32 gal (121.13 liters)
Builder: Grand Banks
HIN/IMO: GNDM0104C505

Engines/Generators

Engine 1

Caterpillar
CX7
Inboard
455HP
Fuel: Diesel
Hours: 834
Hours Date: 07-17-2020
Year: 2005
Location: Port

Engine 2

Caterpillar
CX7
Inboard
455HP
Fuel: Diesel
Hours: 834
Hours Date: 07-17-2020
Year: 2005
Location: Starboard

Generator 1

Onan
eQD

Summary/Description

Two-owner beauty in superb condition. Continually updated, and maintained to excellent standards. Recent improvements/upgrades include electrical, electronics, mechanical and entertainment components. Low engine hours.

AVANTI is one of the absolute best of the ever-popular Eastbay HX 43's to come to market for some time. To date, she has had just two owners, and both ownerships have updated her all along the way.

Her first owner had her on fresh water where she was kept under cover, and her present owners have used her seasonally in New England and stored her inside a heated building at one of the area's most acclaimed boatyards during the winter months.

AVANTI has been maintained to a standard few others can match. The current owner has made extensive improvements over the last few years, with all work done by the Dodson Boatyard in Stonington, CT. Read the details below and the story will unfold.

VESSEL WALK-THROUGH

Helm Deck:

After entering the cockpit, it is two steps up into the helm deck. To port is an L-shaped lounge with under-seat storage and large fold-out teak table. To starboard is the wet bar with stainless steel sink, a drawer and beverage storage area and an AC /DC Norcold refrigerator/freezer (installed 2015) underneath. Above the wet bar, is a custom teak drop box containing a Toshiba LCD flat screen TV.

Forward of the lounge seating, port side, is cabinet space with a chart cabinet on top. To starboard is the helm station with instrument panel and Stidd Helm chair (re-upholstered 2020). Lighting is overhead halogens, the two most forward shine red for night vision. There are two opening side windows, two top hatches and a power-operated (2017) center opening window. Mounted overhead are 3 rod holders.

The soft rear enclosure has a zippered roll-up entry, zippered Eisenglass rear window. The engine room is accessed through a large hatch with removable ladder in the middle of the deck. Helm deck teak decking was sealed with Cetol (2018). Helm deck is equipped with Marine Air 16,000 BTU reverse-cycle A/C.

Controls at the Helm:

- Stainless steel helm wheel
- Polish engine controls
- Side Power bow thruster joystick
- Maxwell up/down windlass control

- Marine Air reverse cycle A/C and heat controls
- Wiper controls (new 2019)
- Perko spotlight controls
- Synchronizer
- Slow Mode
- Ritchie Power Damp Plus compass
- Engine room blower switch
- Bennett trim tab controls
- Rudder angle indicator
- Kahlenberg air horn switch and button

Salon:

Down just three steps down from the helm deck, the salon is to starboard. There is a comfortable U-shaped settee with a swivel teak table with Hi-Lo capability placed in the middle of the U. The table can be lowered to convert the area to a double berth. On the aft bulkhead is the electronics panel, Sea Tel controls, Computank unit measuring fuel and water and a control panel for A/C. Outboard is wood cabinetry, incorporating a built-in cabinet, bookshelf and entertainment system. 16,000 BTU Marine Air reverse-cycle A/C (new 2018) serves the salon, galley, head, and shower. There are salon A/C-heat controls and two chrome reading lights.

Galley:

The galley is to port, with Corian countertops and backsplash, double stainless-steel sink with stainless single-lever faucet, Princess Gourmet electric Ceran three-burner cooktop stove, Sharp Carousel microwave/ convection oven and exhaust fan. In the countertop, on either side of the cooktop, there is a kitchen equipment storage locker and a deep drop-down cold locker. Below is the stainless-steel AC/DC Isotherm drawer refrigerator/freezer (new 2017), which can run continuously without generator - for example while anchored or on a mooring - due to upgraded batteries and the installation of solar panels. There are three drawers and additional storage cabinets beneath the countertop. Above, surrounding the galley, are numerous teak storage cupboards. Just forward of the galley is a separate pantry for storage. Galley area has two stainless opening ports.

Head:

Forward of the salon to starboard is an oversized head containing a VacuFlush toilet, Corian countertop with molded in sink and single-lever stainless faucet. Teak sliding doors give access to storage, above and below. In the upper storage are the controls for the toilet, exhaust fan and holding tank level read outs. Decking is polished marble tile. Head has stainless opening port, as well as stainless opening hatch above.

Shower:

To port and across from the head is a generous shower room with a removable teak seat and a stainless Grohe shower unit, towel bars and additional storage cabinets. As in the head, there is polished marble tile sole and an opening port, as well as overhead opening hatch.

Master Stateroom:

Master stateroom is spacious with generous centerline double berth forward, housing two large drawers beneath. There's a good-sized hanging locker to port and numerous storage cabinets. A Toshiba LCD flat screen TV is mounted on the aft bulkhead. Port and starboard opening ports, plus overhead opening hatch with screen and shade provide plenty of ventilation. Master stateroom is equipped with Bose speakers, Toshiba CD/DVD, stainless steel reading lamps, overhead halogen lighting and dedicated 16,000 BTU Marine Air reverse cycle A/C controls.

COCKPIT

- Upper fixed awning, creating an additional two-and-a-half feet of shelter
- Settee (molded fiberglass) with cushions and under-seat drinks storage
- Teak decking (trimmed and sanded 2019)
- (3) Teak storage hatches
- Opening transom door
- Swim platform with drop-down ladder
- Kato dinghy lift system with (2) Barient winches
- Transom hot and cold shower with retractable hose
- 65 ft. Glendinning 50-amp shore cord (2019)
- Courtesy lights
- (2) Aft deck spotlights
- (4) Mounted rod holders (straight); angled holders onboard can be swapped
- Stainless-steel grab handles beside entryway

EXTERIOR

- Hull Awlgrippd (2018)
- Windlass - stainless steel Maxwell 800 bi-directional with remote
- Anchor 20 kg claw with 250' ft 5/16th chain
- Anchor platform, stainless steel, single stainless-steel roller
- Anchor chain locker, self-draining
- Foredeck self-draining lockers port and starboard
- Stainless steel chocks and mooring cleats
- Epoxy bonded teak decks (refinished 2020)
- Engine room vents
- Fresh and saltwater washdowns
- Stainless steel 1/2" grab rails on cabin top
- (3) Stainless steel hatches on coach roof with (2) on cabin top
- (6) Stainless steel opening port holes
- Mast, aluminum, hinged
- Radar mount
- Mantus chain hook
- Teak navigation light boards (refinished 2017)
- Teak decking (trimmed and sanded 2020)
- Non-skid cabin house deck and pilot-house roof
- Rub rail with stainless steel striker
- Skylight hatches with screens and shades
- Teak dorade boxes with stainless dorades
- All exterior varnish redone (2020)
- Flag poles with holders, bow and stern (varnished 2020)
- Anodes, zinc, shaft, and hull

ELECTRONICS AND NAVIGATION EQUIPMENT

Helm Deck:

- Twin Garmin 8212 GPS/chart plotters (2015) with depth, speed, and Sirius Weather
- AIS Transmit and Receive with Sirius Satellite Weather module (2015)
- Garmin HD2 radar scanner (2015)
- Simrad AP-26 autopilot
- GMI depth /temperature gauge (2015)
- Garmin remote card reader (2015)
- Sidepower bow thruster Joystick control
- Ritchie Power Damp Plus compass
- Rudder angle Indicator
- Electric power center windshield opener (installed 2017)
- ICOM ICM422 VHF Radio (2015)
- Sea Tel Satellite antenna
- Toshiba LCD Flat screen TV (Drop Down Box)
- Bose Speakers

Salon:

- Bose Lifestyle Entertainment system
- Bose speakers
- Fusion Bluetooth (2018)
- Delphi Skyfi2 satellite SiriusXM radio
- Sea Tel Satellite antenna

ENTERTAINMENT EQUIPMENT

- (2) Toshiba LCD Flat screen TVs in helm deck and master stateroom, both with remotes
- Bose Lifestyle stereo system interfaced to XM Satellite Radio and Fusion Bluetooth (new 2018)
- DIRECTV Receiver
- Cable TV and phone connectors
- Wiring, marine grade tin plated copper

ELECTRICAL SYSTEM

- Onan 9 kW generator
- DC Voltmeter; (3) battery bank
- DC amp meter
- Alternators: Each engine and generator
- (3) Nature Power 90w rigid Monocrystalline solar panels - (2) in 2017, (1) in 2018
- (6) Lifeline AGM 6V GPL-6CT batteries (upgraded 2018)
- House batteries increased again by 50% (2019). This to allow refrigeration to run constantly when power is not available -- for example while anchored or on a mooring
- Battery charger: Charles 45A
- Kisae Solar Charge controller
- Mariner galvanic isolator zinc saver
- Battery condition indicator
- Battery disconnect switch

- Battery switch, emergency paralleling
- Helm outlets - (1) AC, (1) DC, (1) Double AC behind helm
- Indicator light- reverse polarity
- Navigation lights, DC
- AC outlets throughout, with GFCI protection
- Shore power, Glendinning Cablemaster with 65 ft. 50 amp cord (new 2019)
- (2) 30 amp to (1) 50 amp splitter

ENGINE AND MECHANICAL EQUIPMENT

- Twin Caterpillar engines, Model: CX7, 455 hp (834 hours as of July, 2020)
- Aftercoolers (new July 2020)
- Engine software updated by Caterpillar (July 2020)
- Glendinning synchronizer
- Twin disc transmissions with slow vessel mode
- Exhaust system, sea water cooled with muffler
- Flexible couplings with matching engine mounts
- Fuel filters, Racor water separators on each engine and generator
- Dual Racor 500 Max fuel filters
- Reverso oil change system for all engines
- Engine start/stop; Parallel start
- Engine controls, Kobelt 2048, single-lever each station, mechanical
- Oil Change kit, DC - Reverso
- Caterpillar engine gauges digital, rpm's analog
- Cutlass bearings (replaced 2018)
- Cutters installed on shafts (2016)
- High exhaust temp. alarms
- (2) Propellers, 24" x 30.5" 5-blade bronze Nibral
- Groco Safety seacocks on engine raw water intakes
- Tides Marine dripless shaft seals
- Rudder angle indicator, DC
- Bennett trim tabs, DC
- Steering, hydraulic
- Side Power bow thruster
- Air Conditioning - (3) Marine Air 16,000 BTU reverse-cycle heat and A/C units. (salon unit, new 2018)
- Electronic opening center windshield
- Windshield wipers, DC, with speed control, auto park and washers (controls new 2019)
- Kahlenberg air horn - stainless-steel
- Teak sole in engine room
- Engine room blowers, DC
- Engine room lights AC/DC
- Engine room faucet, fresh water
- Engine room sound insulation
- Fresh water system, Shurflo pressure water pump
- Whale Gulper shower drain pump (new 2018)
- (3) Rule electric automatic bilge pumps (forward, new 2018)
- Bilge pump, manual
- Holding tank level indicators in head
- Macerator
- Water heater, 11 gal US. AC



- Computank fuel/fresh water gauges
- 450-gal fuel tank, aluminum, baffled
- 110-gal. fresh water tank
- 32-gal. holding tank with pump-out and direct overboard

SAFETY EQUIPMENT

- Revere Coastal Compact 4-person life raft
- Fireboy extinguisher, auto/manual with engine shutdowns, generator, and override control (recertified 2019)
- (3) ABC fire extinguishers (2019)
- Alarm and indicator panel, each station
- Perko searchlight
- Carbon monoxide detectors in sleeping area and salon

OTHER EQUIPMENT

- 10' Caribe hard bottom inflatable dinghy
- Mercury 8 hp four-stroke electric-start outboard motor (new 2017). Less than 20 hrs.
- Dinghy trailer

CANVAS

- Navy Blue Sunbrella covers for interior
- Mesh window covers for windshield and side windows
- Solid window covers (black-out) for windshield and side windows

EXCLUSIONS

The owner's personal effects are excluded from the sale.

DISCLAIMER

The company offers the details of this vessel in good faith but cannot guarantee or warrant the accuracy of this information nor warrant the condition of the vessel. A buyer should instruct his agents, or his surveyors, to investigate such details as the buyer desires validated. This vessel is offered subject to prior sale, price change or withdrawal without notice.





AVANTI 2005 Grand Banks Eastbay 43 HX



Profile



Helmdeck Table Extended



Wet Bar



Helm Station



Helm Console_Detail



Helmdeck Sole



Access to Engine Room



Companionway



Salon Aft



Salon Settee Stbd.



Settee Converts to Double Berth



Passageway Fwd. to Stateroom



Owner's Berth



Owner's Stateroom Stbd



Microwave



Galley Cold Locker and Stovetop



Refrigerator Freezer



Galley Storage



Galley Sinks and Storage



Head



Separate Shower



Electrical Panel



Near-Perfect Teak Decks



Foredeck



Looking Aft



Protected Transition, Cockpit to Helmdeck



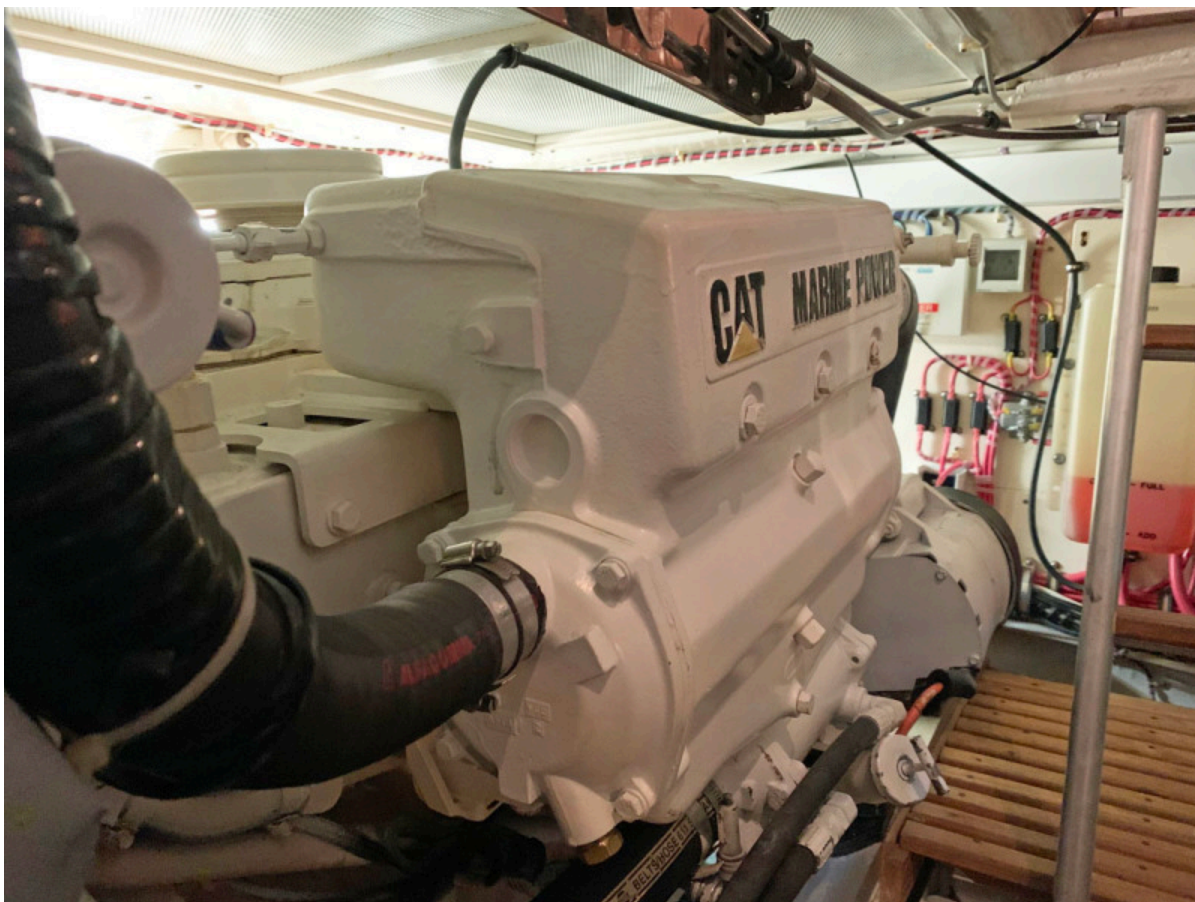
Cockpit



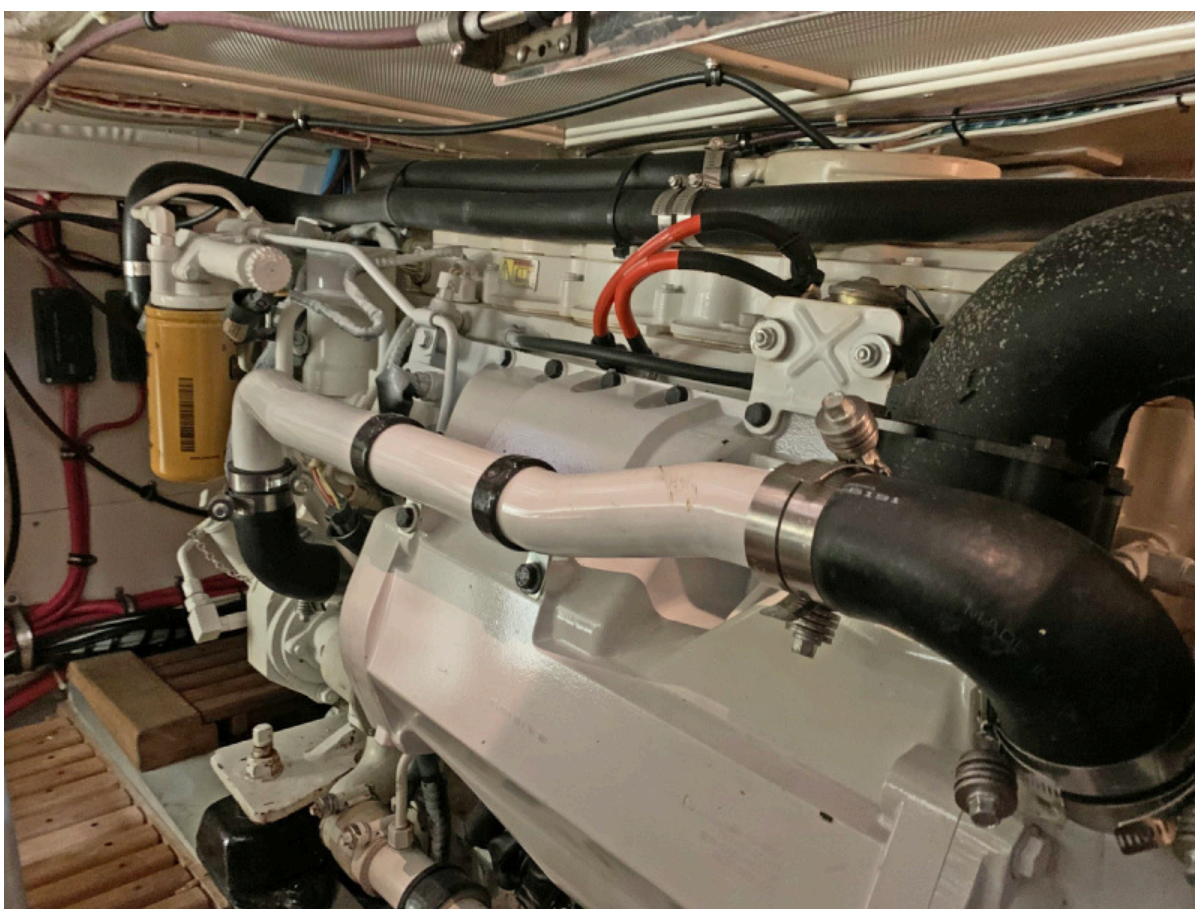
Cockpit



Cockpit Hatches



Engine Room to Port



Engine Room to Stbd.



Generator



Solar Panels



Recent Topsides Awlgrip



In Transit



In the Slings



Transom, Prop Pockets, Davits



Underway



Dinghy Trailer and Outboard